



MAY 26 – 29, 2011

SUPPLEMENTARY REGULATIONS

FIA WORLD RALLY CHAMPIONSHIP

FIA WORLD RALLY CHAMPIONSHIP FOR MANUFACTURERS

FIA WORLD RALLY CHAMPIONSHIP FOR DRIVERS

FIA WORLD RALLY CHAMPIONSHIP FOR CO-DRIVERS

FIA PRODUCTION CAR WORLD RALLY CHAMPIONSHIP FOR DRIVERS

FIA PRODUCTION CAR WORLD RALLY CHAMPIONSHIP FOR CO-DRIVERS

FIA PRODUCTION CAR CUP FOR DRIVERS OF 2WD CARS

INDEX

<i>Content</i>	<i>Page</i>
1. Introduction	5
1.1 Rally Argentina 2011	
1.2 Road Surface	
1.3 Overall SS distance and total distance of the itinerary	
2. Organization	5
2.1 FIA titles for which the Rally counts	
2.2 VISA numbers - FIA and ASN	
2.3 Organiser's name, address and contact details	
2.4 Organising Committee	
2.5 Stewards of the Meeting	
2.6 FIA Delegates	
2.7 Senior Officials	
2.8 Rally HQ details	
3. Programme	8
4. Entries	10
4.1 Closing date for entries	
4.2 Entry Procedure	
4.3 Number of entrants accepted and classes	
4.4 Entry Fees and packages	
4.4.1 WRC Manufacturers, Manufacturer Teams, and PWRC Teams	
4.4.2 Other Competitors	
4.4.2.1 Entry fees	
4.4.2.2 Administrative package	
4.4 Payment Details	
4.6 Refunds	
5. Insurance	12
5.1 Description of insurance cover	
6. Advertising and identification	13
6.1 Rally Plates and competition numbers	
6.2 Organisers' advertising	
7. Tyres	13
7.1 Compliance	
7.2 Tyre marking locations	
8. Fuel	14
8.1 Priority drivers	
8.1.1 FIA fuel order procedure	
8.2 Non priority drivers	
8.2.1 Non FIA fuel order procedure	
8.2.2 Distribution	
8.3 Fuel Couplings	

9. Reconnaissance	15
9.1 Registration procedure	
9.2 Restrictions	
9.3 Collection of speed control checking devices	
10. Administrative checks	16
10.1 Documents to be presented	
10.2 Timetable	
11. Scrutineering, sealing and marking	17
11.1 Venue and Timetable	
11.1.1 WRC Manufacturers and Manufacturers Teams	
11.1.2 Priority 2, Priority 3 and Non Priority drivers	
11.2 Mud flaps	
11.3 Tinted windows	
11.4 Drivers equipment	
11.5 Noise level	
11.6 Preparation of engines for engine block sealing	
11.7 Installation of Safety Tracking System	
12. Other Procedures	18
12.1 Start procedure and order	
12.2 Finish procedure	
12.2.1 Finish Ramp Location	
12.2.2 Procedure	
12.3 Permitted early check in	
12.4 Super Special Stage procedure and running order	
12.5 Power Stage Timing	
12.5.1 Clarification of WRC Art 35.1, Special Stage timing	
12.5.2 Allocation of Power Stage points	
12.6 Environmental procedures	
13. Identification of Officials.....	20
14. Prizes	20
14.1 List of cups	
15. Final checks and protests.....	21
15.1 Final checks	
15.2 Protests fees	
15.3 Appeal fees	
Appendix I - Itinerary	22
Appendix II - Reconnaissance Schedule	26
Appendix III - CROs	27
Appendix IV - Competition numbers and advertising	28

1. INTRODUCTION

1.1

Rally Argentina 2011 will be run in compliance with the International Sporting Code and its appendices, the 2011 FIA World Rally Championship Sporting Regulations, the National Sporting Regulations which comply with the FIA regulations and these supplementary regulations.

Modifications, amendments and /or changes to these Supplementary Regulations will be announced only by numbered and dated bulletins (issued by the Organiser or the Stewards).

Additional information will be published in Rally Guide 2 issued on Tuesday, April 26.

The 2011 FIA World Rally Championship Sporting Regulations can be found at www.fia.com

1.2 Road Surface

The rally will be run on gravel, with 68.8km on tarmac.

1.3 Overall SS distance and total distance of the itinerary

SS Distance: 378.15km

Total Distance: 1456.68km

2. ORGANISATION AND DESCRIPTION

2.1 FIA titles for which the Rally counts

FIA World Rally Championship for Manufacturers
 FIA World Rally Championship for Drivers
 FIA World Rally Championship for Co-drivers
 FIA Production Car World Rally Championship for Drivers
 FIA Production Car World Rally Championship for Co-Drivers
 FIA Production Car Cup for Drivers of 2WD Cars

2.2 VISA numbers - FIA and ASN

ASN visa No: CDA140311	issued on: 14/03/2011
FIA visa No: 6WRC/300311	issued on: 30/03/2011

2.3 Organiser's name, address and contact details

Automóvil Club Argentino (ACA).

Permanent Secretariat in Córdoba:

Rally Argentina Secretariat

Italia 2105 - B° Villa Cabrera

X5008KJG - Córdoba, Argentina

Tel/Fax: ++ 54 351 4872727 / 4872010 / 4877653.

Internet: official web site: <http://www.rallyargentina.com>

E-mail: info@rallyargentina.com

in Buenos Aires

Automóvil Club Argentino

Av. del Libertador 1850.

1425. Buenos Aires, Argentina.

Tel: ++ 54 11 4808 4389

Fax: ++ 54 11 4808-4620

2.4 Organising Committee

Mr. Carlos García Remohí, Mr. Jorge E. Revello, Mr. Alfredo Menendez,
Mr. Eugenio Breard, Mr. Juan Pablo Bello, Mr. David Eli, Mr. Carlos
Borrione.

2.5 Stewards of the Meeting

President: Mr. Morrie Chandler (NZ) (Chairman of the panel)

Members: Mr. Patrick Suberville (MEX)
Mr. Carlos García Remohí (RA)

*Secretary to
the Stewards:* Ms. Yvonne Gilli

2.6 FIA Delegates

FIA Safety Delegate: Mr. Jacek Bartos

FIA Medical Delegate: Md. Manuela Alberro

FIA Technical Delegate: Mr. Jérôme Toquet

Assistant to FIA

Technical Delegate: Mr. Cronge Nordstedt
Mr. Sylvain Rivier
Mr. Jean-Charles Roy
Mr. Cronge Nordstedt

FIA Media Delegate: Mrs. Hayley Gallagher

WRC Manager: Ms. Michèle Mouton

2.7 Senior officials

Clerk of the Course: Mr. Alfredo Menendez

Assistant Clerks

of the Course: Mr. Andrés Castelo

Mr. Adolfo Zeigner

Mr. Pablo Eli

Mr. Juan Oller

Safety Officer: Mr. Carlos Borrione

Scrutineers: Eng. Daniel Rial

Eng. Angel Portella

Mr. Justo Barbosa

Medical Officer: Mr. Javier Ocanto

Press Officers: Mr. Nicolas Vega

Competitors'

Relations Officers: Mr. Jorge Canaves

Mr. Santiago García Remohí

Mr. Christian Delia

Mr. Juan Martín Celesia

Chief Results Officer: Mr. Hugo Gavilán

Administrative

Secretariat: Mr. Ricardo Caballero

Public Relations

Officer: Mr. Maximiliano Montarcé

General Co-ordinator: Mr. David Eli

2.8 HQ location and contact details

Portal del Lago Hotel

Jerónimo Luis de Cabrera and Gobernador Álvarez

5152 Villa Carlos Paz, Córdoba, Argentina.

Tel.: ++ 54 351 4872010 / 4872727

Fax: ++ 54 351 4877653

E-mail: info@rallyargentina.com

3. PROGRAMME

Entries open with the publication of these regulations

Monday, April 25

Entries close (including co-drivers data)

Tuesday, April 26

Road Books, Rally Guide 2 and Maps issued and available
Publication of list of entries accepted by the Organiser

Wednesday, April 27

Closing date for National Accreditation Application

Monday, May 2

The original entry form must reach the organisers

Wednesday, May 4

Closing date for International Accreditation Application

Thursday, May 10

Media Safety Book issued

Monday, May 16

Rally Secretariat moves to HQ

Portal del Lago Hotel

From Sat, May 21 to Wednesday, May 25

Between Administrative Checks
10:00 - 18:00 Reconnaissance Registration
Collection of material and documents

Sports Hall
Villa Carlos Paz

Saturday, May 21

Opening of service Park

SP

During the rally week

Monday, May 23

18:00-20:00 Official Notice Board Available HQ
Distribution of tracking systems for reconnaissance HQ
(Nominated drivers)

Tuesday, May 24

8:00-18:00 Recce starts
14:00 Media Accreditation starts MC
17:00 - 19:00 Distribution of FIA safety tracking rally system Sports Hall

Wednesday, May 25

8:00-18:00 Recce finishes
Administrative checks finish
8:00 Media Center opens MC
14:00-17:30 Part's sealing and certification for Manufacturer
and MT. cars SP
16:00 Team Managers' Meeting (WRC registered teams) HQ

18:00-22:00	Scrutineering and component sealing and marking for P2, P3 and non Priority drivers	CBA
18:00	Doctors' Briefing	HQ
19:00	Helicopter Pilots' Briefing	HQ
Thursday, May 26		
8:00-10:00	Shakedown (P1 and P2)	VCP – Cabal.
10:00-12:00	Shakedown (P1, P2 and P3)	VCP – Cabal.
12:00-15:00	Shakedown (Non P)	VCP – Cabal.
13:30	FIA Pre event press conference	MC
14:00	First Stewards' Meeting	HQ
15:00	Publication of the list of crews eligible to take the start	HQ
	Publication of start list for Day 1 (section 1 & 2)	
16:00	SSS1	VCP
Friday, May 27		
21:30	Publication of start list for Section 4	HQ
Saturday, May 28		
21:30	Publication of start list for Section 6	HQ
Sunday, May 29		
13:00	Prize giving	VCP
13:30	Final scrutineering	VCP
14:00	Post-event FIA Press Conference	MC
16:30	Publication of Provisional Final Classification	HQ
Monday, May 30		
12:00	Media Centre Closes	MC
12:00	Rally Secretariat Closes	HQ

LOCATIONS:

HQ (Headquarters)	Hotel Portal del Lago, Jerónimo Luis de Cabrera and Gobernador Álvarez, 5152 Villa Carlos Paz.
SP (Service Park)	Avenida Presidente Arturo U. Illia (ex Av. Atlántica) and Gobernador Álvarez (between Gob. Peña and Gob. Ferreira), Villa Carlos Paz.
MC (Media Center)	Auditórium of Portal del Lago Hotel, Jerónimo Luis de Cabrera and Gobernador Álvarez, 5152 Villa Carlos Paz.
Shakedown	Villa Carlos Paz - Cabalango
Scrutineering	Av. Colón 4880, Córdoba.
Sports' Hall	Avenida Arturo U. Illia y Gobernador Álvarez, Villa Carlos Paz.
Price Giving	Av. Pte. U. Illia between Medrano and Nahuel Huapi streets, Villa Carlos Paz.
Final Scrutineering	Honda Rosso – Av. San Martín 1687, Villa Carlos Paz.

4. ENTRIES

4.1 Closing date for entries

Entries close on Monday, April 25 at 18:00hrs.

4.2 Entry procedure

Anybody wishing to take part in Rally Argentina 2011 must send the duly completed entry form

(Including co-driver details) to Rally Argentina Secretariat (address details in Art. 2.3) before the above mentioned closing date.

Manufacturers and WRC Teams, as well as drivers registered for PWRC should make their entries by using the standard entry forms for their championships.

The entry application will only be accepted if accompanied by the total entry fees or by a receipt issued by the competitor's National Sporting Authority. If the entry form is sent by fax or e-mail, the original must reach the Organisers no later than Monday, May 2.

4.3 Number of entrants accepted and classes

The maximum number of entrants accepted in Rally Argentina 2011 is 90. If more than 90 entries are received the organiser reserves the right to decide which entries among the non-priority drivers will be accepted.

The classes will be divided according to 2011 FIA WRC Sporting Regulations, Art. 4.6:

Classes	Groups
WRC	WRC (2011): 1.6 T engine with WRC kit
1	S2000-Rally: 1.6 T engine
2	S2000-Rally: 2.0 Atmospheric Group R4
3	Group N car over 2000cc (current N4)
4	RGT Cars
5	Group A car over 1600cc and up to 2000cc Super 1600 R2C (over 1600cc and up to 2000cc) R3C (over 1600cc and up to 2000cc) R3T (up to 1600cc / nominal) R3D (up to 2000cc / nominal)
6	Group A car over 1400cc and up to 1600cc R2B (over 1400cc and up to 1600cc) kit-car over 1400cc and up to 1600cc
7	Group A car up to 1400cc kit-car up to 1400cc
8	Group N car over 1600cc and up to 2000cc
9	Group N car over 1400cc and up to 1600cc R1B (over 1400cc and up to 1600cc)
10	Group N car up to 1400cc R1A (up to 1400cc)

National Class: Cars with national homologation and entered in the Argentine National Championship round.

A minimum of five starters per class is admitted: should this number not be attained, the competitors in the class concerned will be admitted in the next class up.

4.4 Entry fees and package

4.4.1 WRC Manufacturers , Manufacturer Teams and PWRC

As per 2011 FIA WRC Sporting Regulations.

4.4.2 Other Competitors

4.4.2.1 Entry fees

With the optional advertising proposed by the organisers (to be published in a bulletin):

- Argentinean Competitors\$ 3,000 (Argentine pesos)
- Competitors from the American Continent€ 2,500
- Others€ 3,000

Without this advertising

- Argentinean Competitors.....\$ 6,000
- Competitors from the American Continent€ 4,500
- Others€ 5,000

4.4.2.2 Administrative package

	Privateers
Vehicle Plates	
• VIP (or guest) plates	1
• Service Plates	1
• Auxiliary plates	1
Administration	
• Regulations	1
• Road book sets	2
• Route maps	3
• Programme	3
• Results books	1
• CD of Safety Plan	0
Passes	
• Mechanics	4

4.5 Payment Details

Competitors from abroad are advised to make payment of entry fees by direct bank transfer to:

Payment in Euros:

BENEFICIARY BANK:	BNP Paribas Suisse S.A.
SWIFT:	BPPBCHGG
ACCOUNT IBAN NUMBER:	CH5708686140192602978
BENEFICIARY CLIENT:	1401926
BENEFICIARY NAME:	Automovil Club Argentino
REFERENCE:	ATTN URS BINDER
CORRESPONDANT BANK:	BNPAFRPP

Payment in US Dollars:

BENEFICIARY BANK:	BNP Paribas Suisse S.A.
SWIFT:	BPPBCHGG
ACCOUNT IBAN NUMBER:	CH34 0868 6140 1926 0184 0
BENEFICIARY CLIENT:	1401926
BENEFICIARY NAME:	Automovil Club Argentino
REFERENCE:	ATTN URS BINDER
CORRESPONDANT BANK:	CHASUS33

Note: Bank transfer charges to be borne by the issuing party.

Argentine Competitors are advised to make payment of entry fees and other entry-related fees at any of the Automóvil Club Argentino Offices. The entry will only be considered if receipt of this payment is submitted to the Rally Secretariat.

4.6 Refunds

The organisers may refund up to 50% of the entry fee to those competitors who, for reasons of "force majeure" (duly certified by their ASN), were unable to start the rally.

5. INSURANCE

5.1 Description of insurance cover

Entry fees include the insurance premium which covers the following from 26 to 29 May, 2011:

1. Fire: Whilst parked in the official parcs ferme, the participating cars and their accessories will be covered against fire, explosion, malevolence, vandalism and terrorist acts, according to the vehicle

and following an amount scale to be determined.

2. Damages: Whilst in the service, refuelling, regrouping and scrutineering areas the participating cars will be covered by the organiser insurance.

3. Civil liability: For third party bodily injuries, death and damages and/or third party property damages caused during the running of the Special and Super Special Stages, up to an amount of USD 600,000 per incident and with a total maximum limit for all incidents of € 10 million.

4. The Organising Committee declines any liability concerning the consequences caused by the violation of laws, rules or ordinances committed by competitors, remaining those consequences under the sole responsibility of those who committed the action.

5. The service vehicles, even those bearing special plates with the identification of ASSISTANCE issued by the organiser, may never be considered as official participants in the rally. They are therefore not covered by the insurance policy of the rally and remain the sole responsibility of their owner.

The same is valid for the cars used by competitors during reconnaissance, even bearing a serial number or an event specific sticker.

6. ADVERTISING AND IDENTIFICATION

6.1 Rally Plates and competition numbers

See Appendix 4 below.

6.2 Organisers' advertising

The organisers' advertising will be described in a Bulletin.

Competition numbers, rally plates and advertising must be fixed to the car before scrutineering.

7. TYRES

All tyres must comply with the requirements of FIA 2011 WRC Sporting Regulations and its appendix V.

Competitors are reminded that according to the above mentioned Regulations:

- *Only marked tyres may be used on special stages.*

- All entrants of 4wd cars must use the specified tyres produced by the FIA nominated tyre companies except for 4wd 2litre turbocharged Gp.N cars driven by non priority drivers.
- Priority 3 drivers of 2WD cars (FIA Production car Cup), as well as all Non Priority drivers of 2WD, Gp. R4 and Gp. N 2-litre turbocharged cars may use free tyres. Such tyres must be in conformity with Appendix J and Appendix V of 2011 FIA WRC Sporting Regulations.

7.1 Compliance

The following maximum quantity, type and compound of tyres are confirmed for use as per Art. 61.1.2 of the 2011 FIA WRC Sporting Regulations:

FIA listed Tyre Manufacturer	Type	Compound
Michelin	175/65 x 15" 'Latitude Cross'	S
D-Mack	205/65 x 15" DMG	G4

Driver priority	Max. N° of tyres for the rally	Extra tyres for shakedown
P1	30	6
P2	30	6
All other 4WD cars	20	5
P3 drivers of 2WD Cars & Non priority drivers of 2WD cars	30	Unrestricted

7.2 Tyre marking locations

Tyres used for all the rally, including the shakedown, will be marked at the exit of the Service Park.

8. FUEL

8.1 Priority drivers

All priority drivers must use FIA fuel as provided by the FIA appointed supplier.

8.1.1 FIA fuel order procedure

No later than 5 weeks prior to the day of the shakedown, competitors must notify their fuel requirements to the sole supplier:

Carless / Vital Equipment

Fax: +44 1981 241 169

Email: wrcfuelorder@vitalequipment.co.uk

Order form available at www.rallyargentina.com

8.2 Non priority drivers

Non priority drivers not using FIA Fuel, must use fuel provided by the organizers.

8.2.1 Non FIA fuel order procedure

Non FIA fuel may be requested and pay for at administrative checks.

8.2.2 Distribution

In no case may drivers use their own refuel systems. For environmental and safety reasons, refueling operations must be carried out in the designated areas indicated in the Road Book.

8.3 Fuel Couplings

All competitors are required to fit FIA specified refuel couplings, except non priority drivers using a car which retains the standard tank.

9. RECONNAISSANCE

9.1 Registration procedure

Location: Convention's Center – Arturo U. Illia Avenue at the corner with Gobernador Roca street, Villa Carlos Paz.

Times: From Saturday May 21 to Wednesday May 25, from 10:00 to 18:00hrs.

Prior to commencement of reconnaissance all competitors should register in order to obtain reconnaissance passes. Competitors will not be allowed to access a special stage open for reconnaissance unless these vehicle passes are displayed.

Recce only: If a driver wishes to take part in the reconnaissance only, as preparation for future participations in the event, they must contact Rally Argentina Secretariat for registration.

Entry fee for Reconnaissance only is € 1,500.-

9.2 Restrictions

Provision is made for a maximum of two passages through each special stage during reconnaissance for all crews entered.

Throughout reconnaissance, the speed limit will be of 90 Km/h in the special stages, unless the traffic signs, the road book or bulletins indicate a lower speed limit.

Competitors must drive in a manner that does not endanger or inconvenience other traffic or people living near the stages. All competitors must note that there will be strict police controls to prevent speeding or other road infringements.

Under no circumstances may crews drive in the opposite direction of the rally in the special stage.

9.3 Collection of speed control checking devices

All Priority drivers, plus other drivers on request by the FIA, must carry a speed control checking device in their vehicles during the reconnaissance.

The collection of these devices will take place on Monday May 23, from 18:00 to 20:00hrs. at Rally HQ.

10. ADMINISTRATIVE CHECKS

10.1 Documents to be presented

The following will be checked at the administrative checks:

- Entrant's license
- Driver's and co-driver's competition license / road license / passport or identification
- ASN authorization, for all "non Argentine" competitors
- Information given on the entry form
- Car insurance cover certificate
- Car insurance registration papers

10.2 Timetable

Location: Convention's Center – Arturo U. Illia Avenue at the corner with Gobernador Roca street, Villa Carlos Paz. (in front of Rally HQ)

Times: From Saturday May 21 to Wednesday May 25, from 10:00 to 18:00hrs.

11. SCRUTINEERING, SEALING AND MARKING

11.1 Venue and timetable

11.1.1 WRC Manufacturers and Manufacturer Teams

Location: Service Park –Villa Carlos Paz.

Date: Wednesday, May 25

Time: 14:00 to 17:30hrs.

11.1.2 Priority 2, Priority 3 and Non Priority Drivers

Location: Av. Colon 4880, Córdoba.

Date: Wednesday, May 25

Time: 18:00 - 22:00hrs

11.2 Mud flaps

With reference to of Appendix J, Art 252, Art 7.7, the use of Mud Flaps is authorized in Rally Argentina 2011.

11.3 Tinted windows

The use of tinted windows, according to Appendix J, Art 253 Art 11, is authorized.

11.4 Drivers equipment

Competitors are reminded that according to FIA Regulations Appendix L Chapter III all drivers and codrivers entered in the event must wear:

- *crash helmets which meet one of the standards listed in FIA Technical List N° 25*
- *overalls as well as gloves (optional for co-drivers), long underwear, a balaclava, socks and shoes homologated to the FIA 8856-2000 standard (Technical List N° 27).*
- *A FIA-approved Front Head Restraint (HANS device)*

These equipment will be checked at scrutineering, and during the event.

11.5 Noise Level

Competitors are reminded that, according to FIA Appendix J Art 252, the maximum noise level permitted is 103 dB(A).

11.6 Preparation of engines for engine block sealing

One hole drilled on the engine block to fit a wire, a plate and a seal, at a visible position to be seen when opening the bonnet (except for P1 drivers).

11.7 Installation of Safety Tracking System

The compulsory FIA safety rally tracking systems will be issued on Monday, May 23 from 18:00 to 20:00hrs at ISC-T office – located at the Sports Hall in Villa Carlos Paz, in front of Rally HQ.

These units must be installed before the cars are presented for scrutineering.

Should a competitor retire, they must return the tracking unit and associated cables to ISC-T office in Rally HQ as soon as possible.

The tracking units may have to be removed from the rally cars at the final Parc Fermé, therefore cars should be left unlocked.

12. OTHER PROCEDURES

12.1 Start procedure and order

There will be no ceremonial start. The rally will start at TCO at Service Park exit.

12.2 Finish procedure

12.2.1 Finish Ramp Location:

Avenida Presidente Arturo U. Illia, between Medrano and Nahuel Huapi streets. (near the Service Park)

12.2.2 Procedure

The finish of the rally will be at TC19C, located at Carlos Paz on Sunday May 29, 2011.

After Service Park H, crews will enter a holding area, TC19C, where they must follow the instructions of the marshals who will reorder them for the finish ceremony.

Access to the holding area between TC19C and the podium will be limited to officials and to media representatives holding the appropriate pass.

The proceedings will be in accordance with FIA WRC Sporting Regulations Appendix IV.

After the podium finish, competitors must take their cars: to Parc Fermé which is located next to the Service Park or to Final Scrutineering in convoy, as appropriate.

The car may be driven by a team representative.

A Parc Fermé pass will be issued to all cars when they enter it. Once results are made final the Stewards will authorize the opening of Parc Fermé. The car may then be removed by the driver or team representative who must produce the Parc Fermé pass.

12.3 Permitted early check-in

Crews are authorized to check in early without incurring a penalty at TC1A, TC7C, TC15C and TC19A.

12.4 Super special stage procedure and running order

- a. SSS1/19 will consist of two consecutive laps around the same circuit. The start and finish point are coincident, while the Stop Control is located at the entrance and exit gate
- b. Two cars will start the SSS simultaneously
- c. The Organizers will produce a special starting order on grounds of TV and spectators interest.
- d. Given that the circuit is made of one continuous road, cars checking in first will start on position A, while the others will start on position B.
- e. If a crew cannot finish the SSS, the car will be removed by the organizer and placed at the Stop Control.

f. Yellow flags

If the running of this SSS is interrupted, a yellow flag will be displayed to the crews, who must immediately reduce speed and follow marshal's instructions.

12.5 Power Stage Timing

12.5.1 Clarification of WRC Art 35.1, Special Stage timing

All special stages will be timed to the elapsed tenths of a second, except for SS 19 (Power Stage) which will be timed to the elapsed millisecond. However, the overall result will only show tenths of a second.

12.5.2 Allocation of Power Stage points

For the purpose of allocating points, the 'Power Stage' Classification shall be calculated using the Stage Time, plus any other time penalty accrued on this stage, including any False Start Penalty Time.

FIA WRC Sporting Regulations, Art 5.4.3 clarification:

To be awarded additional points for the Power Stage a competitor must appear in the Official Final Classification of the rally as per Art 53.2.4 of the WRC Sporting Regulations.

Should a competitor contest the Power Stage and not appear in the Official Final Classification of the rally, the Power Stage classification will be revised accordingly.

12.6 Environmental procedures

In order to protect the environment organizers have set procedures for the correct treatment of the different types of waste. Team members must place:

- **Regular waste** (current domiciliary litter: food, paper, bottles, etc.)
To be placed in yellow plastic bags to be provided by organizers
- **Contaminated/dangerous waste**
 - **Solid** (cloths or covers dirty with oil, parts such as brake pads, nuts, screws, etc.)
To be placed in black plastic bags to be provided by organizers
 - **Liquid** (oils, fuel, brake liquid, etc.)
To be placed in identified jerry cans to be provided by organizers.
These will be collected and treated by a specialized company.

All garbage will be collected from the Service Park at the end of each day.

- **Wash of parts**
 - There will be a dedicated area within the Service Park to wash parts. Washing of parts in other locations is not permitted.

There will be a penalty of US\$ 500 for any infringement to the above mentioned procedures.

13. IDENTIFICATION OF OFFICIALS

The post chiefs will be identified as follows:

Stage Commander	Red tabard
Stage Safety Officer	Green tabard
Time Control Officer	Blue tabard
Doctor	White tabard
Safety Marshals	Yellow tabard

14. PRIZES

The first five places of the overall classification and the first three of each class will be given a trophy.

14.1 List of cups

Prizes (1 trophy per crew member) will be awarded according the following list:

Overall Classification

1st to 5th overall

Manufacturer

Winning manufacturer

PWRC Competitors

1st to 3rd

Classifications per class

1st to 3rd

15. FINAL CHECKS AND PROTESTS

15.1 Final Checks

The final scrutineering will take place in Villa Carlos Paz.

Cars subject to final scrutineering (at Stewards' discretion) must have one representative of the entrant as well as mechanics (in case of dismantling) present at the final check.

15.2 Protest fees

International Protest fee: € 1,000.-

For a protest involving a clearly defined part of the car (engine, transmission, steering, braking system, electrical installation, bodywork, etc.) The claimant must pay an additional deposit of: € 600.-

15.3 Appeal fees

International appeal fee (FIA): € 12,000.-

APPENDIX 1 - ITINERARY - Day 1

V7

START (Section 1/Sección 1)				THURSDAY/JUEVES 26		
TC - SS CH - PE	L O C A T I O N L U G A R	SS Dist. Dist. PE	Liaison Dist. Dist. Enlace	Total Dist Dist. Total	Target Time T. Otorg.	First car due Paso 1° auto
0 CARLOS PAZ - SERVICE PARK OUT						
RZ 1	REFUEL ALL COMPETITORS					14:40
	Km to next refuel - Km hasta siguiente reabastecimiento	(2,97)	(9,00)	(11,97)		
1			4,58	4,58	0:20	15:00
SSS 1	SUPER ESPECIAL CARLOS PAZ	3,02				15:05
1A	Parc Ferme IN (Early check in is allowed)		4,42	7,44	0:20	15:25
RE START (Section 2/Sección 2)				FRIDAY/VIERNES 27		
1B	Parc Ferme OUT / Service IN	-	0,00	0,00		6:55
SERVICE A - CARLOS PAZ		(3,02)	(9,00)	(12,02)	0:15	
1C	Service OUT	-	-	-	-	7:10
RZ 2	REFUEL ALL COMPETITORS					
	Km to next refuel - Km hasta siguiente reabastecimiento	(0,00)	(91,95)	(91,95)		
RZ 3	REFUEL ALL COMPETITORS					
	Km to next refuel - Km hasta siguiente reabastecimiento	(40,90)	(78,06)	(118,96)		
2			161,12	161,12	2:23	9:33
SS 2	EL MIRADOR / SAN LORENZO	18,23				9:36
3			4,28	22,51	0:29	10:05
SS 3	MINA CLAVERO / GIULIO CESARE	22,67				10:08
RZ 4	REFUEL ALL COMPETITORS					
	Km to next refuel - Km hasta siguiente reabastecimiento	(37,32)	(28,93)	(66,25)		
4			17,05	39,72	0:45	10:53
SS 4	EL CONDOR / CUESTA BLANCA	37,32				10:56
4A	Regrouping IN	-	16,49	53,81	1:10	12:06
RE START (Section 3/Sección 3)				FRIDAY/VIERNES 27		
4B	Regrouping OUT / Service IN	-	-	-	Max. 0:10	12:16
SERVICE B - CARLOS PAZ		(78,22)	(198,94)	(277,16)	0:30	
4C	Service OUT	-	-	-	-	12:46
RZ 5	REFUEL ALL COMPETITORS					
	Km to next refuel - Km hasta siguiente reabastecimiento	(0,00)	(91,95)	(91,95)		
RZ 6	REFUEL ALL COMPETITORS					
	Km to next refuel - Km hasta siguiente reabastecimiento	(40,90)	(78,06)	(118,96)		
5			161,12	161,12	2:23	15:09
SS 5	EL MIRADOR / SAN LORENZO	18,23				15:12
6			4,28	22,51	0:29	15:41
SS 6	MINA CLAVERO / GIULIO CESARE	22,67				15:44
RZ 7	REFUEL ALL COMPETITORS					
	Km to next refuel - Km hasta siguiente reabastecimiento	(37,32)	(28,93)	(66,25)		
7			17,05	39,72	0:45	16:29
SS 7	EL CONDOR / CUESTA BLANCA	37,32				16:32
7A	Technical Zone IN	-	16,49	53,81	1:10	17:42
7B	Technical Zone OUT / Service IN	-	-	-	0:03	17:45
FLEXI SERVICE C - CARLOS PAZ		(78,22)	(198,94)	(277,16)	0:45	
7C	Service OUT / Parc Ferme IN / For all classified cars (except re-starting crews) (Early check in is allowed)					00:00
Overnight Regrouping						
Thursday and Friday Totals						
		159,46	406,88	566,34		

VERSION 7 - MARCH, SATURDAY 26, 2011

APPENDIX 1 - ITINERARY - Day 2

V7

RE START (Section 4/Sección 4)						SATURDAY/SABADO 28	
TC - SS CH - PE	L O C A T I O N L U G A R	SS Dist. Dist. PE	Liaison Dist. Dist. Enlace	Total Dist Dist. Total	Target Time T. Otorg.	First car due Paso 1° auto	
7D	Parc Ferme OUT / Service IN	-	0,00	0,00	7:28		
SERVICE D - CARLOS PAZ						0:15	
7E	Service OUT	-	-	-	-	7:43	
RZ 8	REFUEL ALL COMPETITORS						
	Km to next refuel - Km hasta siguiente reabastecimiento	(38,14)	(103,79)	(141,93)			
8			19,72	19,72	0:23	8:06	
SS 8	LAS JARILLAS / FALDA DEL CARMEN	21,57				8:09	
9			76,45	98,02	1:30	9:39	
SS 9	LAS BAJADAS / VILLA DEL DIQUE	16,57				9:42	
RZ 9	REFUEL ALL COMPETITORS						
	Km to next refuel - Km hasta siguiente reabastecimiento	(41,69)	(111,31)	(153,00)			
10			19,85	36,42	0:43	10:25	
SS 10	AMBOY / SANTA MONICA	20,33				10:28	
11			11,40	31,73	0:38	11:06	
SS 11	SANTA ROSA / SAN AGUSTIN	21,36				11:09	
11A	Regrouping IN	-	91,69	113,05	1:45	12:54	
RE START (Section 5/Sección 5)						SATURDAY/SABADO 28	
TC - SS CH - PE	L O C A T I O N L U G A R	SS Dist. Dist. PE	Liaison Dist. Dist. Enlace	Total Dist Dist. Total	Target Time T. Otorg.	First car due Paso 1° auto	
11B	Regrouping OUT / Service IN	-	-	-	Max. 0:10	13:04	
SERVICE E - CARLOS PAZ						0:30	
11C	Service OUT	-	-	-	-	13:34	
RZ 10	REFUEL ALL COMPETITORS						
	Km to next refuel - Km hasta siguiente reabastecimiento	(38,14)	(103,79)	(141,93)			
12			17,12	17,12	0:23	13:57	
SS 12	LAS JARILLAS / FALDA DEL CARMEN	21,47				14:00	
13			75,25	96,72	1:30	15:30	
SS 13	LAS BAJADAS / VILLA DEL DIQUE	16,57				15:33	
RZ 11	REFUEL ALL COMPETITORS						
	Km to next refuel - Km hasta siguiente reabastecimiento	(41,69)	(111,31)	(153,00)			
14			19,85	36,42	0:43	16:16	
SS 14	AMBOY / SANTA MONICA	20,33				16:19	
15			11,40	31,73	0:38	16:57	
SS 15	SANTA ROSA / SAN AGUSTIN	21,36				17:00	
15A	Technical Zone IN	-	91,69	113,05	1:55	18:55	
15B	Technical Zone OUT / Service IN	-	-	-	0:03	18:58	
FLEXI SERVICE F - CARLOS PAZ						0:45	
15C	Service OUT / Parc Ferme IN / For all classified cars (except re-starting crews) (Early check in is allowed)					00:00	
Overnight Regrouping							
Saturday Totals		159,66	438,22	597,88			

VERSION 7 - MARCH SATURDAY 26, 2011

APPENDIX 1 - ITINERARY - Day 3

V7

RE START (Section 6/Sección 6)				SUNDAY/DOMINGO 29			
TC - SS CH - PE	L O C A T I O N L U G A R	SS Dist. Dist. PE	Liaison Dist. Dist. Enlace	Total Dist Dist. Total	Target Time T. Otorg.	First car due Paso 1º auto	
15D	Parc Ferme OUT / Service IN	-	0,00	0,00		6:16	
SERVICE G - CARLOS PAZ					0:15		
15E	Service OUT	-	-	-	-	6:31	
RZ	REFUEL ALL COMPETITORS						
12	Km to next refuel - Km hasta siguiente reabastecimiento	(0,00)	(71,89)	(71,89)			
RZ	REFUEL ALL COMPETITORS						
13	Km to next refuel - Km hasta siguiente reabastecimiento	(48,21)	(28,41)	(76,62)			
16			94,87	94,87	1:45	8:06	
SS 16	ASCOCHINGA / AGUA DE ORO	48,21				8:09	
RZ	REFUEL ALL COMPETITORS						
14	Km to next refuel - Km hasta siguiente reabastecimiento	(10,82)	(132,83)	(143,65)			
17	CABALANGO		90,11	138,32	2:15	10:24	
SS 17	CABALANGO - VILLA GARCIA	3,90				10:27	
17A	Super Special Stage Regrouping IN		17,17	21,07	0:38	11:05	
RE START & REORDERING (Section 7/Sección 7)				SUNDAY/DOMINGO 29			
18	Regrouping OUT	-	-	-	Max. 0:30	11:35	
SSS 18	SUPER ESPECIAL CARLOS PAZ	3,02				11:38	
18A	Cabalango Holding Area IN		16,92	19,94	0:20	11:58	
19	Cabalango Holding Area Out				0:09	12:07	
SS 19	CABALANGO - VILLA GARCIA (Power Stage)	3,90				12:10	
19A	Regrouping & Technical Zone IN (Early check in is allowed)	-	14,36	18,26	0:37	12:47	
19B	Regrouping OUT / Service IN	-	-	-	0:03	12:50	
SERVICE H - CARLOS PAZ		(59,03)	(233,43)	(292,46)	0:10		
19C	Service OUT / Finish - Holding Area IN	-	-	-	-	13:00	
	Podium						

SECTION 6

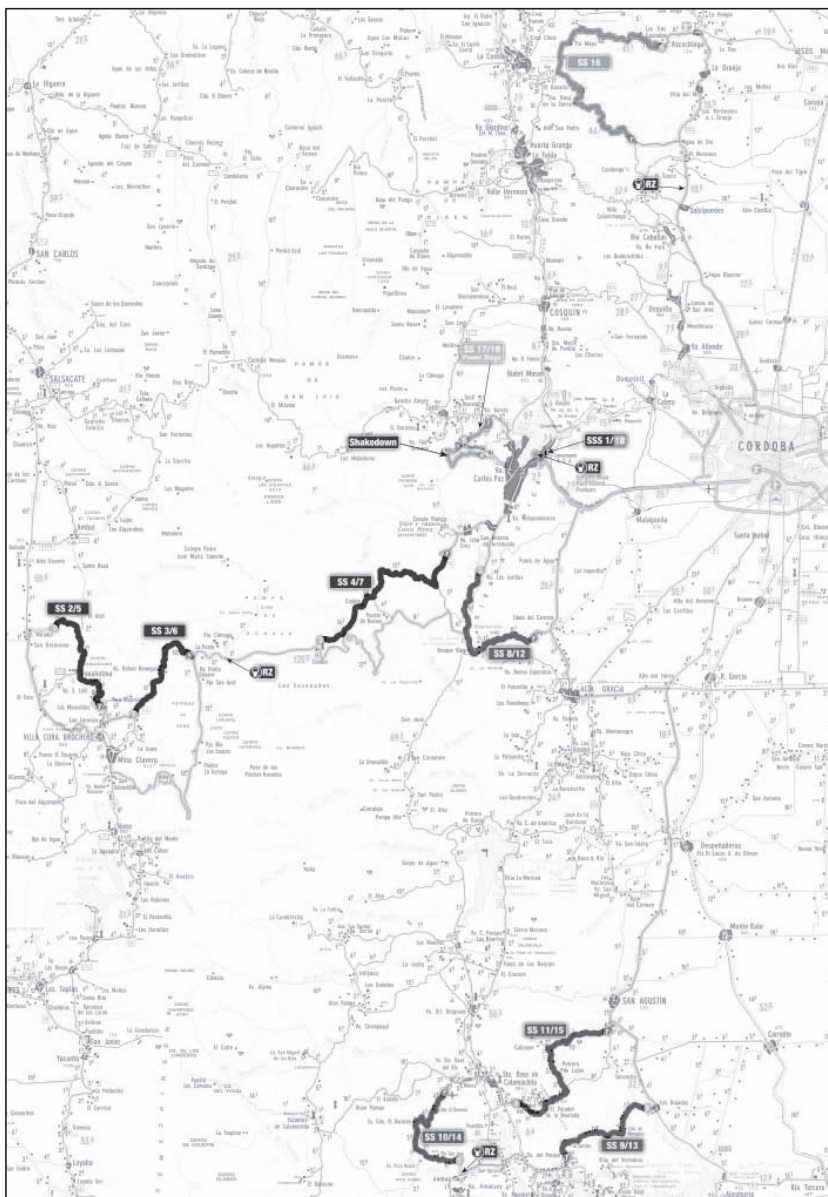
SECTION 7

Sunday Totals	59,03	233,43	292,46
----------------------	--------------	---------------	---------------

TOTALS OF THE RALLY				
	SS	LIAISON	TOTAL	%
Thursday and Friday (May 26 & 27)	159,46	406,88	566,34	38,88
Saturday (May 28)	159,66	438,22	597,88	41,04
Sunday (May 29)	59,03	233,43	292,46	20,08
TOTALS 19 SS	378,15	1.078,53	1.456,68	100,00

APPENDIX 1 - ITINERARY - Map

V7



APPENDIX 2. RECONNAISSANCE SCHEDULE

Tuesday, May 24: Priority 1 & 2 drivers
Wednesday, May 25: Priority 3 & Non priority drivers
Passages: 2

SS	2/5	<i>El Mirador - San Lorenzo</i>	From 8:00
SS	3/6	<i>Mina Clavero - Giulio Césare</i>	to 12:00 hrs.
SS	4/7	<i>El Cóndor - Cuesta Blanca</i>	From 11:00
SS	8/12	<i>Las Jarillas - Falda del Carmen</i>	to 18:00 hrs.
SD		<i>Carlos Paz - Cabalango</i>	

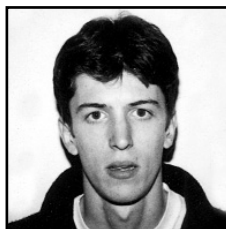
Tuesday, May 24: Priority 3 & Non priority drivers
Wednesday, May 25: Priority 1 & 2 drivers
Passages: 2

SS	9/13	<i>Las Bajadas - Villa del Dique</i>	From 8:00
SS	10/14	<i>Amboy - Santa Mónica</i>	to 12:00 hrs.
SS	11/15	<i>Santa Rosa - San Agustín</i>	
SS	16	<i>Ascochinga - Agua de Oro</i>	From 11:00
			to 15:00 hrs.
SS	17/19	<i>Cabalango - Villa García</i>	From 14:00
			to 18:00 hrs.
SSS	1/18	<i>Villa Carlos Paz</i>	From 16:00
			to 18:00 hrs.

APPENDIX 3. COMPETITORS' RELATIONS OFFICERS



Mr. Jorge Canaves



**Mr. Santiago
García Remohí**



Mr. Christian Delía



Mr. Juan Martín Celesia

APPENDIX 4. COMPETITION NUMBERS AND ADVERTISING

