

rally4 **AUSTRALIA**

COFFS COAST NSW

8-11 SEPT 2011

WRC
FIA WORLD RALLY
CHAMPIONSHIP



RALLY **GUIDE 1**

Rally Australia Partners



EVENTS
NEW SOUTH
WALES



FIA World Rally Championship International Partners



RALLY AUSTRALIA

Round 10:

- FIA World Rally Championship for Manufacturers
- FIA World Rally Championship for Drivers
- FIA World Rally Championship for Co-Drivers

Round 5:

- FIA Production Car World Rally Championship for Drivers
- FIA Production car Cup for Drivers of 2WD Cars

8 – 11 September 2011

Rally Guide 1

2011 Rally Australia

This document has no regulatory power, except if referred to specifically in the Supplementary Regulations or a Bulletin and therefore should be used as a guide only. For regulations, please refer to the FIA Rally Championship General Prescriptions, the FIA World Rally Championship Regulations, Regulations for the Production Car World Rally Championship, the Rally Australia Supplementary Regulations and Bulletins.

Content

1. Introduction			
1.1 Welcome	3		
1.2 Event Overview	4		
2. Contact Details			
2.1 Permanent Contact Details	5		
2.2 Media Contact Details	5		
2.3 Corporate Hospitality, Marketing & Sponsorship	5		
2.4 Organising Committee	6		
3. Programme & Critical Deadlines			
3.1 Schedule before the Rally Week	7		
3.2 Schedule of the Rally Week	7		
4. Entry Details			
4.1 Titles for which the rally counts	9		
4.2 Criteria for acceptance of entries	9		
4.3 Entry Fees	10		
4.4 Entry Package	11		
5. Service Park & Remote Refuel			
5.1 Information about the Service Park	11		
5.2 Facilities at the Service Park	11		
5.3 Remote Refuel Zones	12		
6. Two-way Radio			
6.1 Application procedure	12		
6.2 Contact details	13		
7. Fuel / Tyres			
7.1 Fuel	13		
7.2 Tyres	14		
8. Import of Vehicles & Spare Parts			
8.1 Vehicles imported under Event Status Concession	15		
8.2 Vehicle Registration	15		
9. Helicopters			
9.1 Registration Procedure	16		
9.2 Helicopter Supplier	16		
10. Accommodation			16
11. Media			
11.1 Contact before the event	17		
11.2 Accreditation Procedure	17		
12. Australian Visa			18
13. List of Useful facts & services			
13.1 Driving in Australia	19		
13.2 Climate	19		
13.3 Car Dealerships	19		
13.4 Hire Car Companies	20		
13.5 Airlines & Airports	20		
Appendix 1 – Itinerary			
• Itinerary			
• Overall Rally Map			
• Draft Reconnaissance Schedule			

www.rallyaustralia.com

1. INTRODUCTION

1.1 Welcome from Rally Australia

Welcome to Rally Australia, Round 10 of the prestigious 2011 FIA World Rally Championship.

After moving to Australia's East Coast in 2009 Rally Australia is excited to have now moved further south to its new home on the Coffs Coast, located on the stunning Mid-North Coast of New South Wales. With some of the oldest and most well regarded roads in the country we are positive that our event will be one of the most challenging and diverse of the 2011 championship.

Located half way between Sydney and Brisbane the Coffs Coast is where the Great Dividing Range meets the Pacific Ocean, leaving a small pocket of paradise lodged between the mountains and the sea.

Encompassing rainforest escarpments inland through to the golden sands of the coast and solitary islands just off-shore, the Coffs Coast has some of the most uniquely spectacular scenery in the land. With warm summers and mild winters, the climate is described as wonderfully temperate all year round.

Maintaining and protecting the environment of the region is of utmost importance, and Rally Australia actively supports improved environmental awareness and good practice in motorsport. The Rally Australia team is dedicated to reducing the environmental impact of the event and encourages teams to adopt a similar philosophy. We believe that event specific initiatives combined with the actions of each competing team and the FIA's Make Cars Green campaign will help ensure that Rally Australia minimises its impact on the environment.

Rally Australia acknowledges the traditional owners of the land, past and present, where the event will occur. We hope that you will have the opportunity during your visit to the Coffs Coast region to experience some of Australia's cultural heritage.

With spectacular scenery and a relaxed lifestyle, the Coffs Coast offers a veritable feast of recreational activities. We encourage you to take some time to enjoy these activities during your stay for the rally or on future visits to the region. There is a fantastic array of accommodation options ranging from world class resorts to classic Bed & Breakfasts and family holiday parks. Put simply, there is something to suit everyone.

Rally Australia has always had a reputation in the World Rally Championship as being a well organised innovative event, and we are sure that with the dedicated team of Officials that have been assembled for the 2011 event that this tradition will continue.

On behalf of our Organising Committee and Officials we look forward to welcoming you to our beautiful country in September.

Rally Australia Team.

1.2 Event Overview

After 20 memorable events as a round of the FIA World Rally Championship we once again look forward to welcoming you all to Australia, and particularly the spectacular East Coast.

In 2011 Rally Australia will be a compact, liaison friendly event and we are very excited about what we have on offer.

The Service Park will be located at the Coffs Harbour Airport, a vast flat area with a mix of tarmac, concrete and hard packed dirt. Rally Headquarters will be located 8.8km north of the Service Park at Opal Cove Resort. The competitive stages will all be based within an 80km radius of the Service Park travelling through the Coffs Harbour, Bellingen, Nambucca and Clarence Valley Shires.

A Super Special Stage is planned within the city of Coffs Harbour, just 5 minutes drive from the service park on Thursday, Friday and Saturday evenings. The Super Special Stage will host a variety of spectator and hospitality opportunities for your sponsors and supporters.

The Special Stages will be on a combination of fast flowing gravel public roads and the more tight and twisty forestry stages for which the Coffs Coast is famous.

The event will commence on Thursday 8th September with shakedown, followed by a Rally Show and Super Special Stage in Coffs Harbour.

Friday will see crews contesting 115km of gravel special stages, followed by the Super Special Stage in the early evening. After the end of Day service the vehicles will overnight Parc Ferme at the service park.

On Saturday crews will compete over 151km of special stages, before returning for a final run over the Super Special Stage early evening. End of Day service is again at Coffs Harbour, before entering the overnight Parc Ferme within the service park.

Sunday has competitors travelling north and west for the final 93km of special stages. The Power Stage will complete the competition before competitors return to Coffs Harbour for the Ceremonial Finish.

Event Summary:

Total Distance:	1255.64km
Stage Distance:	382.60km
No of Stages:	28
Stages in Darkness:	6 (Super Special Stage)
Stage Surface:	Special Stages – Gravel Super Special Stage - Tarmac
Sunrise:	6:24am
Sunset	6:10pm

www.rallyaustralia.com

2. CONTACT DETAILS

2.1 Permanent Contact Details

Address of the Permanent Secretariat:

Rally Australia
41 Gordon Street
Coffs Harbour
NSW 2450
Australia

Postal Address:

PO Box 1234
Coffs Harbour
NSW 2450
Australia

Telephone:

+61-(0)2-6648 4972

Facsimile:

+61-(0)2-6648 4975

Email:

info@rallyaustralia.com.au

Website:

www.rallyaustralia.com

2.2 Media Contact Details

National Media Manager:

Mr Chris Nixon

Postal Address:

PO Box 1234
Coffs Harbour
NSW 2450
Australia

Telephone:

+61-(0)2-6648 4972

Facsimile:

+61-(0)2-6648 4975

Mobile:

+61-(0)418-759 417

Email:

media@rallyaustralia.com.au

2.3 Corporate Hospitality, Marketing & Sponsorship

Marketing Manager:

Mr Luke Hannan

Postal Address:

PO Box 1234
Coffs Harbour
NSW 2450
Australia

Telephone:

+61-(0)2-6648 4972

Facsimile:

+61-(0)2-6648 4975

Mobile:

+61-(0)404-841 764

Email:

marketing@rallyaustralia.com.au

2.4 Organising Committee

Clerk of the Course
Deputy Clerk of the Course
Assistant Clerks of the Course

Chief Medical Officer
General Manager
Event Secretary/Competitor Services
Operations Manager
Media Manager
Marketing Manager

Dr Michelle Gatton
Mr Peter Macneall
Mr Errol Bailey
Mr Ben De Longis
Mr Adrian Dudok
Mr Brian Everitt
Mr Wayne Johnston
Mr Paul Woodward
Dr Rik Hagen
Mr Michael Masi
Ms Janah Mclean
Mr Ben Raggatt
Mr Chris Nixon
Mr Luke Hannan

3. PROGRAMME AND CRITICAL DEADLINES

3.1 Schedule before the rally week

Friday 15 April

Rally Guide 1 published

Friday 8 July

Supplementary Regulations published
Entries Open

Sunday 31 July

Closing date for Helicopter Registrations

Wednesday 3 August

Closing date for ordering of FIA Fuel

Monday 8 August

Rally Guide 2 published
Road Books published
Closing date for Radio Licence applications

Wednesday 10 August

Closing date for accreditation requests from national media

Wednesday 17 August

Entries close (incl Co-driver details)
Closing date for accreditation requests from international media

Saturday 3 September

1000hrs	Opening of the Service Park for WRC Teams & P3 Competitors
2200hrs	Service Park Closes

Sunday 4 September

0900hrs	Opening of the Service Park for Non-Priority Drivers
1000hrs onwards	Media activities for P1 & P2 Crews & selected other crews in Sydney
2100hrs	Service Park Closes

3.2 Schedule for the rally week

Monday 5 September

0700hrs	Service Park Open
0800hrs / 2000hrs	Rally Office Open
0900hrs / 2000hrs	Reconnaissance Registration
0900hrs / 2000hrs	Administrative Checks
1800hrs / 2000hrs	Collection of Reconnaissance GPS Trackers (nominated drivers)
2200hrs	Service Park Closes

Tuesday 6 September

0700hrs	Service Park Open
0700hrs / 1745hrs	Day 1 Reconnaissance (according to schedule)
0800hrs / 2000hrs	Rally Office Open
0900hrs / 2000hrs	Administrative Checks
1000hrs / 1800hrs	Media Accreditation & Media Centre Open
1700hrs / 2000hrs	FIA Rally Tracking GPS available for collection
2200hrs	Service Park Closes

Wednesday 7 September

0700hrs	Service Park Open
0730hrs / 1930hrs	Day 2 Reconnaissance (according to schedule)
0800hrs / 2000hrs	Rally Office Open
0900hrs / 2000hrs	Media Centre Open
0900hrs / 1700hrs	Administrative Checks
1000hrs / 1330hrs	Scrutineering & Sealing for WRC – P1 (by appointment)
1300hrs / 1400hrs	Checking of weight for Manufacturers cars
1500hrs	Technical Scrutineering & Component Sealing for P2, P3 & Non-Priority drivers
1500hrs / 1700hrs	FIA Rally Tracking GPS available for collection
1600hrs	WRC Team Managers Briefing
1730hrs	Helicopter Pilots Briefing
2200hrs	Service Park Closes

Thursday 8 September

0600hrs	Service Park Opens
0800hrs / 2200hrs	Rally Office Open
0800hrs / 2200hrs	Media Centre Open
0800hrs / 1000hrs	Shakedown – WRC P1 & P2
1000hrs / 1200hrs	Shakedown – WRC P1, P2 & P3
1200hrs / 1300hrs	Shakedown – Other Competitors
1330hrs	FIA Pre-Event Press Conference
1500hrs	First Stewards Meeting
1600hrs	Publication of start list Day 1 (sections 1 & 2)
1630hrs / 1830hrs	Rally Show
1845hrs	Ceremonial Start
1914hrs	Start of Section 1, Day 1
1954hrs	End of Section 1 (1 st car) – Overnight Parc Fermé

Friday 9 September

0715hrs	Start of Section 2, Day 1
0530hrs / 2200hrs	Rally Office Open
0500hrs / 2200hrs	Media Centre Open
1930hrs	End of Day 1 (1 st car) – Overnight Parc Fermé
2215hrs	Parc Ferme closes for all classified cars
2230hrs	Publication of start list Day 2

Saturday 10 September

0630hrs	Start of Day 2
0530hrs / 2200hrs	Rally Office Open
0500hrs / 2300hrs	Media Centre Open
1945hrs	End of Day 2 (1 st car) – Overnight Parc Fermé
2300hrs	Parc Ferme closes for all classified cars
2330hrs	Publication of start list Day 3

Sunday 11 September

0600hrs	Start of Day 3
0500hrs / 2200hrs	Rally Office Open
0500hrs / 2200hrs	Media Centre Open
1548hrs	Power Stage
1730hrs	Prizegiving – Finish Podium
1800hrs	Final Scrutineering
1800hrs	FIA Post-Event Press Conference
2000hrs	Publication of Final Provisional Classification

Monday 12 September

0800hrs / 1700hrs	Rally Office Open
0800hrs / 1700hrs	Media Centre Open
1000hrs	WRC Team Managers Debrief

4. ENTRY DETAILS

4.1 Titles for which the rally counts

- FIA World Rally Championship for Manufacturers
- FIA World Rally Championship for Drivers
- FIA World Rally Championship for Co-Drivers
- FIA Production Car World Rally Championship for Drivers
- FIA Production Car World Rally Championship for Co-Drivers
- FIA Production car Cup for Drivers of 2WD Cars

4.2 Criteria for acceptance of entries

4.2.1 Closing Date

Those wishing to take part in the 2011 Rally Australia must send the completed official entry form (including co-driver details) to the Rally Office (Art 2.5). The entry application will be accepted only if accompanied by the total entry fees or by a receipt issued by the competitor's National Sporting Authority. If the entry form is sent by fax or email the original entry form must reach the Organiser no later than one week after the closing date for entries.

All entry forms must be received before the close of entries on Wednesday 17th August at 17:00hrs (GMT+10hrs).

4.2.2 Number of Entries

The maximum number of entries is 70. If more than 70 entries are received the Organisers' reserve the right to extend this number and to decide which entries among the Non-Priority drivers will be accepted.

4.2.3 Classes

Entrants will be divided into 11 classes in accordance with the present FIA regulations:

WRC	WRC (2011): 1.6 T engine with WRC kit
1	S2000-Rally: 1.6 T engine
2	S2000-Rally: 2.0 Atmospheric Group R4
3	Group N car over 2000cc (actual N4)
4	RGT Cars
5	Group A car over 1600cc and up to 2000cc Super 1600 R2C (over 1600cc and up to 2000cc) R3C (over 1600cc and up to 2000cc) R3T (up to 1600cc / nominal) R3D (up to 2000cc / nominal)
6	Group A car over 1400cc and up to 1600cc R2B (over 1400cc and up to 1600cc) kit-car over 1400cc and up to 1600cc
7	Group A car up to 1400cc kit-car up to 1400cc
8	Group N car over 1600cc and up to 2000cc
9	Group N car over 1400cc and up to 1600cc R1B (over 1400cc and up to 1600cc)
10	Group N car up to 1400cc R1A (up to 1400cc)

4.3 Entry Fees

4.3.1 Manufacturers and Manufacturer Teams

- WRC registered Manufacturers and Manufacturer Teams: as per FIA WRC Appendix VI plus 10% Goods & Services Tax (GST)

4.3.2 FIA Priority 2

- With optional advertising €6,000 + 10% GST
- Without optional advertising €7,000 + 10% GST

4.3.3 PWRC

- With optional advertising €3,750 + 10% GST
- Without optional advertising €4,750 + 10% GST

4.3.4 Privateer Competitors

- With optional advertising A\$2,500 (including 10% GST)
- Without optional advertising A\$3,500 (including 10% GST)

Australian crews registered in the Bosch Australian Rally Championship (ARC) receive a \$1,000* rebate on their entry fee.

[* Should more than 15 eligible entries be received preference will be given to those drivers who have competed in other rounds of the Bosch ARC in 2011.]

4.3.5 Reconnaissance Only

€1,000 + 10% GST

4.3.6 Auxiliary Plate (each)

A\$450 (including 10% GST)

Note: A deposit is payable for the FIA Tracking GPS system, which is refundable at the end of the rally, after the receipt of all equipment in good condition.

4.4 Entry Packages * () = Number of copies to be mailed/couriered to Team Manager

Product	Manufacturer (2 cars)	Manufacturer Team (2 cars) (1 car)		PWRC	Australian & Other Competitors
Vehicle Plates					
• VIP/Guest	10	8	4	1	1
• Service	6	4	2	1	1
• Auxiliary	12	8	4	2	1
Administration					
• Regulations	10 (10)	6 (6)	3 (3)	2 (2)	1 (1)
• Road Book	12 (8)	6 (4)	3 (2)	3 (2)	1 (1)
• Route Map	12 (10)	8 (6)	5 (3)	5 (2)	2 (2)
• Programme	15 (-)	10 (-)	5 (-)	5 (-)	1 (-)
• Results Book	1 (1)	1 (1)	1 (1)	1 (1)	1 (1)
• Safety Plan CD	1 (1)	-	-	-	-
Event-issued Passes					
• Team Guest	20	15	5	5	5
• Team Member	-	-	-	-	5

5. SERVICE PARK & REMOTE REFUEL ZONES

5.1 Information about the Service Park

The Service Park will be at the Coffs Harbour Airport, Aviation Drive, Coffs Harbour, which is located approximately 8.8km from Rally Headquarters.

The Service Park is fully secured. All competitors will be located on level ground generally consisting of a hard-packed grass covered surface.

FIA Priority Competitors can access the Service Park from 1000hrs Saturday 3rd September.
Non-Priority Competitors can access the Service Park from 0900hrs Sunday 4th September.

5.2 Facilities at the Service Park

The Organisers will provide the following facilities at the Service Park:

- Public toilets
- Water taps for shared use
- Waste removal
- Recycling facilities
- Waste oil collection
- General venue security

The following facilities can be ordered for individual team use:

- Analogue phone lines
- ADSL connections
- Dedicated portable toilets
- Dedicated security
- Water connections
- Electrical connections
- Marquees
- Forklifts for exclusive use
- Portable buildings & Partitioning
- Catering

To order these facilities please download the "Service Park Facilities Order Form" from the event website.

Each competitor will be provided with the following area within the Service Park:

- WRC Manufacturers as agreed with Organisers
- PWRC 10m x 10m
- Other Competitors 10m x 10m or as agreed

5.3 Remote Refuel Zones

On Friday 9th September, Day 1, there will be one remote refuel zone established in the township of Woolgoolga, 27.4km from the Service Park. This location will be used twice during the day.

On Saturday 10th September, Day 2, a remote refuel zone will be established in the township of Bowraville, 61.8km from the Service Park. This location will be used twice during the day.

On Sunday 11th September, Day 3 there will be a remote refuel zone established near the township of Ulong, 37.9km from the Service Park. This location will be used twice during the day.

6. TWO-WAY RADIO

6.1 Application Procedure

A licence is required for the use of all radio transmitters in Australia.

Competitors wishing to use 2-way radios during Rally Australia must complete the application form available on the forms section of the event website.

Radio Licences will be checked at scrutineering by Rally Australia officials in consultation with Redspec Consultants Pty Ltd, a government authorised authority for communications.

Equipment acceptable for use in Australia must fall within the following frequency bands:

- VHF Mid Band (70 to 87.5 MHz);
- VHF High Band (148 to 174 MHz)

The frequency assigned to the licence will be issued by Redspec Consultants Pty Ltd once the application has been received. All applications for licences must be received, with payment, by Redspec Consultants Pty Ltd by 11 August 2011.

CBRS

The Citizen Band Radio Stations (CBRS) in Australia operates under a Class Licence, so that individual station licences are not required. The radio equipment is subject to stringent technical specification, and must operate in one of the following two bands:

- HF (26.965 to 27.405 MHz);
- UHF (476.625 to 477.400 MHz).

This is a public service, and no protection from interference is available. Competitors wishing to use this service should contact Redspec Consultants Pty Ltd for further information.

6.2 Contact Details

For further information on the use of 2-way radios in Australia please contact:

Redspec Consultants Pty Ltd
Suite 1, 33 Sanders St, Upper Mt Gravatt, Queensland 4122, Australia
Telephone: +61 (0)7 3420 7755
Facsimile: +61 (0)7 3420 4018
Email: nhay@radspec.com.au

7. FUEL / TYRES

7.1 Fuel

7.1.1 Fuel

All Priority Drivers are required to use FIA Fuel. The supplier appointed by the FIA for 2011 to carry out fuel ordering, fuel supply and refuel services is Carless (working with Vital Equipment Ltd).

Non-Priority Drivers may use standard pump fuel supplied by the organisers at refuel points during the rally. This fuel will be BP Ultimate.

7.1.2 Order procedure / Cost of FIA Fuel

All competitors using FIA Fuel must place their fuel order directly with Vital Equipment Ltd no later than 3rd August 2011.

Fuel Order: Vital Equipment Ltd
Facsimile: +44-1981-241169
Email: wrcfuelorder@vitalequipment.co.uk

The order form issued by Carless/Vital Equipment Ltd is available on the Rally Australia website (www.rallyaustralia.com). It is a condition of supply that payment must be made in full before delivery can be made. The balance for any unused fuel will be refunded after the rally.

The cost of the fuel, including refuelling service is €4.68 per litre.

Payment details by Bank transfer to:
 Owner of account: Petrochem Carless Ltd re World Rally
 Deposit Bank: Lloyds TSB Bank
 Code: 30-00-09
 Account No: 86350201
 IBAN: GB 94 LOYD 3000 0986 3502 01
 SWIFT: LOYDGB21013

7.1.3 Fuel Couplings

All competitors are required to fit FIA specified refuel couplings, except Non-Priority Drivers using a car which retains a standard fuel tank.

7.2 Tyres

7.2.1 Tyres

The FIA has nominated two tyre suppliers to provide tyres for the rallies in the 2011 Championship. These suppliers are Michelin and DMack.

All entrants of 4wd cars must use the specified tyres produced by the FIA nominated tyre companies, with the exception of 4wd 2litre turbocharged Gp.N cars driven by Non-Priority Drivers.

All Priority Drivers may use only the maximum quantity of tyres detailed in the event supplementary regulations.

Priority 3 drivers of 2WD cars (FIA Production Car Cup) may use free tyres. Such tyres must be in conformity with Appendix J and Appendix V of the 2011 FIA World Rally Championship Sporting Regulations.

When driven by Non-Priority Drivers, all 2WD cars, Gp.R4 and Gp.N 2-litre turbocharged cars may use free tyres. Such tyres must be in conformity with Appendix J and Appendix V of the 2011 FIA World Rally Championship Sporting Regulations.

Specific queries may be addressed to:

<p>Michelin Competition, 46 Rue Du Ressort 63100 Clermont Ferrand, France. www.michelin.com</p> <p>Contact: Mr.Jacques Morelli Tel: +33(0)608011350 E-Mail: jacques.morelli@fr.michelin.com</p>	<p>DMack Tyres, 42 Millbrook Road, Kingstown Ind. Estate, Carlisle, England CA3 0EU www.dmacktyres.com</p> <p>Contact: Mr Dick Cormack Tel: +44(0)1228 672100 E-Mail: dick.cormack@rallytyres.com</p>
--	--

For information regarding tyre quantities refer to article 61.2 of FIA World Rally Championship Sporting Regulations.

8. IMPORTATION OF VEHICLES & SPARE PARTS

The easiest way to temporarily import rally and support vehicles, parts, tyres and components into Australia without payment of customs import duty and sales tax is either under an ATA Carnet or FIA/AIT Carnet de Passages en Douane.

ATA Carnets are issued by the Chamber of Commerce in the exporting country. An ATA Carnet will allow the bringing of rally vehicles, etc into Australia for up to twelve months subject to the expiry date of the Carnet. All items not re-exported within this period will be liable for duty and sales tax.

Should a Carnet not be obtained, Rally Australia can assist with importation via their "Event Status Concession".

8.1 Vehicles Imported Under Event Status Concession

A permit from the Commonwealth Department of Infrastructure, Transport, Regional Development & Local Government must be issued before the vehicle enters Australia for all vehicles being imported using the Event Status Concession.

Application forms can be downloaded from the internet at:

www.infrastructure.gov.au/roads/vehicle_regulation/bulletin/importing_vehicles/general/Application.asp
[X](#)

It is strongly recommended that you do not ship your vehicle until after you receive your Import Approval. Any missing documents or incomplete applications will delay the issuing of an Import Approval. You will need an Import Approval to take delivery of your vehicle from the Australian Port of entry.

Allow up to 17 days from receipt of your application and all documentation for processing and issue of an Approval. A fee of \$50.00 must accompany this application. Details of how to make payment is on the Application Form.

For additional information please contact the Rally Office or our Official International Logistics Supplier: White Knight International Motorsport Logistics

Attention: Mr Tony Vinson

Telephone: +61-(0)7-3262 1770

Email: tony@whiteknight.com.au

Website: www.whiteknight.com.au

8.2 Vehicle Registration

8.2.1 Visiting Rally Vehicles from Overseas

Visiting rally vehicles that are registered in another country and have number plates, a label and registration papers, do not require registration in NSW to compete in Rally Australia.

Visiting rally vehicles that are unregistered may be issued an Unregistered Vehicle Permit (UVP) for the duration of Rally Australia. These vehicles are subject to special conditions that restrict vehicle use only to the duration of the rally. A completed Customer Roadworthiness Declaration RTA Form 1245 is required. Forms can be downloaded from

<http://www.rta.nsw.gov.au/publicationsstatisticsforms/downloads/45070938.pdf>

8.2.2 Visiting Rally Vehicles from Interstate

Rally vehicles visiting NSW from interstate may participate in CAMS rally events if they comply with the conditions of the registration cover issued by their own Registration Authority. Reciprocal agreements between jurisdictions apply.

9. HELICOPTERS

9.1 Registration Procedure

In accordance with FIA guidelines on helicopter use, all helicopters flying in support of the rally must be registered with the organisers. It is intended that, as a safety precaution, there will be a protocol to control rally airspace and only registered aircraft will be allowed to fly in this airspace.

Registration forms are available from the forms section of the Rally Australia website.

By registering a helicopter at Rally Australia the pilot of the helicopter must agree to follow the rules and instructions notified to him or her during the event and agree to attend the compulsory briefing.

9.2 Helicopter Supplier

The preferred helicopter suppliers to Rally Australia are:

Precision Helicopters

Contact: Andrew Horne – Operations Manager

Phone: +61 2 6652 9988

Email: andrew@precisionhelicopters.com.au

Web: www.precisionhelicopters.com.au

Fleet Helicopters

Contact: Mike Watson – CEO

Phone: +61 2 6772 2348

Email: mwatson@fleethelicopters.com.au

Web: www.fleethelicopters.com.au

10. ACCOMMODATION

The Official Hotels for Rally Australia are Opal Cove Resort and Novotel Pacific Bay Resort.

- Opal Cove Resort (Rally Headquarters) www.opalcove.com.au
- Novotel Pacific Bay Resort www.pacificbayresort.com.au

Information on alternative accommodation in the Coffs Coast region is available by contacting the Rally Australia office at info@rallyaustralia.com.au

11. MEDIA

11.1 Contact before the event

FIA WRC Media Delegate: Ms Hayley Gallagher
 Telephone: +44-125 278 1431
 Facsimile: +44-870 112 3279
 Mobile: +44-7887 508 890
 Email: HGallagher@fiacommunications.com
 Website: www.fia.com

National Media Manager: Mr Chris Nixon
 Postal Address: PO Box 1234, Coffs Harbour, NSW 2450
 Telephone: +61-(0)2-6648 4972
 Facsimile: +61-(0)2-6648 4975
 Mobile: +61-(0)418 759 417
 Email: media@rallyaustralia.com.au
 Website: www.rallyaustralia.com

11.2 Accreditation Procedure

As a round of the FIA World Rally Championship, Rally Australia must adhere to the media guidelines as set out by the FIA, the international governing body of motorsport. Please read the following guidelines carefully and ensure all the information requested is supplied with your accreditation application and it is sent to the appropriate address.

Accreditation provides access to the event Media Centre, near the Service Park and designated areas on the Special Stages.

There are two types of accreditation:

1. Event Accreditation is issued to media outlets and individuals on an event-by-event basis.
2. Permanent Accreditation is issued to media outlets and individuals who attend the majority of WRC events throughout the season. These people are issued by North One Sport with a photographic accreditation and permanent tabard.

Media Accreditation Forms for Rally Australia are available on the event website.

Applications for media accreditation fall into the following categories:

1. **International or National Radio/Television/websites and other electronic media and Commercial Photographers should send their Accreditation Requests by Wednesday 17th August to:**

North One Sport
 Accreditation Service
 Maynard House
 46 – 52 Pentonville Road
 London N1 9HF
 Phone: +44 (0) 20 7584 7584, Fax: +44 (0) 20 7278 3753
 E-mail: accreditations@northonesport.com

2. Australia print journalists and photographers Accreditation Requests should be submitted by Wednesday 10th August to:

Rally Australia – Media Accreditation
PO Box 1234
Coffs Coast, NSW 2450

Information to be supplied with each application

(a) A formal request for accreditation, written on the publication's official letterhead, signed by a Director of the publication or the Editor. Requests signed by clerical staff will not be accepted.

(b) A completed Accreditation Form. NB: International Print media & Photographers must use the Accreditation Form found on the FIA website – www.fia.com

(c) Written confirmation of the publications frequency and circulation or readership figures.

(d) A current and original copy of the publication.

(e) Requests for Freelance Journalists/Photographers must be accompanied by copies of their published work during the last 12 months, specifying the names of the newspapers/magazines in which the work has been published.

(f) Passport size colour photographs of all pass applicants.

Note:

(c) and (d) do not apply to major international press agencies.

12. AUSTRALIAN VISA

All international team personnel are required to obtain either a Sporting or Business Visa in order to gain entry into Australia to compete in the Event.

If you hold a current passport for a country listed on the Electronic Travel Authority (ETA) list then you will be required to obtain a Business (Short Stay) 977 visa.

If you hold a current passport with a country not listed on the ETA list, then you will be required to obtain a Business (Short Stay) 456 visa.

Alternatively a Sporting Visa can be obtained of which there are a number of different categories depending on your particular role within the team.

It is essential that your visa application is completed before you board your flight to Australia.

All Australian Visa requirements and forms can be easily obtained online at:

<http://www.immi.gov.au/allforms/sport.htm>

13. LIST OF USEFUL FACTS AND SERVICES

13.1 Driving in Australia

All overseas visitors must carry their valid overseas civil drivers licence when driving in Australia. If the licence is not in English, an official English translation or an International Driving Permit must accompany the licence.

If the overseas licence is a license to drive cars then the licence holder may drive vehicles of the kind covered by a NSW Class C driver licence (up to 4.5 tonnes GVM and seating up to 12 adults, including the driver). If the overseas licence is a license to drive heavy vehicles then the licence holders may drive vehicles that are authorised by their overseas licence class.

In Australia all vehicles travel on the left side of the road.

The maximum speed limit in cities and towns varies between 40-60km. On country roads and main highways maximum speed limits are typically 100 or 110km, as signposted. New South Wales uses fixed speed cameras as well as mobile cameras and lasers to monitor speed.

Each occupant of a vehicle must wear a seatbelt at all times.

The use of a hand-held mobile phone while driving is an offence in Australia and can result in a fine of up to A\$300.

13.2 Climate

The Coffs Coast is subtropical with warm to very warm wet summers and cool to mild dry winters. September is a relatively dry season of the year with light winds and clear skies. Average temperature for September is 17 degrees.

13.3 Car Dealerships

Manufacturer	Dealer	Telephone/website
Citroen	Coffs Coast Prestige 195 Pacific Hwy, Coffs Harbour 2450	+61-(0)2-6648 3570 www.coffsc Coast Prestige.com.au
Ford	Mike Blewitt Ford 3 Tollhurst Place, Coffs Harbour 2450	+61-(1)800 367 348 www.mikeblewittford.com.au
Mitsubishi	Geoff King Motors Mitsubishi Tollhurst Place, Coffs Harbour 2450	+61-(0)2-6659 1000
Peugeot	Coles Car Sales 109 Woodlark Street, Lismore, 2480	+61-(0)2-6621 2728
Subaru	Geoff King Motors Subaru Tollhurst Place, Coffs Harbour, 2450	+61-(0)2-6659 1000
Toyota	Coffs Harbour Toyota 192-196 Orlando Street Coffs Harbour NSW 2450	+61-(0)2-6652 1933

13.4 Hire Car Companies

Company	Vehicles	Address	Telephone/Website
Avis	Cars/Mini-Buses/ Trucks/4wd's	Coffs Harbour Airport Terminal Building, Coffs Harbour	+61-(0)2-6651 3600 www.avis.com.au
Budget	Cars/Mini-Buses/ Trucks/Utes/4wd's	Coffs Harbour Airport Terminal Building, Coffs Harbour	+61-(0)2-6651 4994 www.budget.com.au
Europcar	Cars/trucks/utes/ minibuses	Coffs Harbour Airport Terminal Building, Coffs Harbour	+61-(0)2-6651 8558 www.europcar.com.au
Hertz	Cars/Vans/Trucks/4wd's	Coffs Harbour Airport Terminal Building, Coffs Harbour	+61-(0)2-6651 1899 www.hertz.com.au
Thrifty	Cars/Mini-Buses/ Trucks/Utes	Corner Marcia Street and Pacific Hwy, Coffs Harbour	+61-(0)2-6652 8622 www.thrifty.com.au

13.5 Airlines & Airports

13.5.1 Airlines

Airline	Phone Number	Website
Air New Zealand	1800-14-7332	www.airnz.com.au
British Airways	1300-76-7177	www.britishairways.com
Cathay Pacific Airways	13-1747	www.cathaypacific.com
Emirates Airlines	1300-30-3777	www.emirates.com.au
Japan Airlines	1300-52-5287	www.au.jal.com
JetStar	13-1538	www.jetstar.com
Lufthansa	1300-65-5727	www.lufthansa.com
Malaysia Airlines	13-2627	www.malaysiaairlines.com
Qantas Airways	13-1313	www.qantas.com.au
Singapore Airlines	13-1011	www.singaporeair.com.au
Thai Airways	1300-65-1960	www.thaiairways.com.au
Virgin Blue	13-6789	www.virginblue.com.au

13.5.2 Airports

Airport	Phone Number	Website
Coffs Harbour Airport	+61-(0)2-6648 4837	www.coffsharbour.nsw.gov.au/www/html/425-airport-.asp
Gold Coast Airport	+61-(0)7-5589 1100	www.goldcoastairport.com.au
Brisbane Airport	+61-(0)7-3406 3000	www.brisbaneairport.com.au
Sydney Airport	+61-(0)2-9667 9111	www.sydneyairport.com.au
Melbourne Airport	+61-(0)3-9297 1600	www.melbourneairport.com.au

APPENDIX 1 - ITINERARY

Our Itinerary – Key Points

In 2011 Rally Australia will produce a unique, driver friendly event incorporating some of the most magnificent scenery in the country with some of the most enjoyable rally roads in the Championship!

The route and itinerary have been very carefully constructed to ensure that our event satisfies not only the competitors, but also our sponsors, supporters and teams. 2011 will offer a challenging and diverse course which will be delivered in a compact itinerary.

With the event based in the town of Coffs Harbour, this has allowed organisers to coordinate all of the events key locations within close proximity of each other and the stages. For competitors and teams alike, this also means we have been able to apply reasonable start times each day.

After a successful result in 2009 and as per requests from some of the teams, Rally Australia will once again offer a central service park throughout the rally located at the Coffs Harbour Airport. This is a vast, secure location and will be seen as a great asset to our event.

The roads used will be a mixture of public gravel roads and dirt forestry roads. This means in reconnaissance you will almost certainly come across local residents. It is essential that you respect the road rules and display courtesy to these local residents during reconnaissance. The Coffs Coast has a strong rallying heritage. However Rally Australia will use some roads in areas which have not seen rally before. Therefore we want to ensure that residents and competitors alike have a great experience and leave a favourable impression on the area.

Rally Australia wishes you all the best of luck with your preparations for our event and looks forward to seeing you all down under in September 2011!

The Rally Australia Team

START Thursday 8 September 2011

TC	Location	SS	Liaison	Total	Time	1st Car
SS		Dist	Dist	Dist	Allowed	due
	Rally show - Coffs Harbour					16:30
0	Start - Service Park					19:14
1	Harbour		5.42	5.42	0:13	19:27
SS1	Coffs I	3.77				19:30
2	Harbour		1.34	5.11	0:14	19:44
SS2	Coffs II	3.77				19:47
2A	Coffs Parc Ferme In		5.15	8.92	0:18	20:05 E
Totals		7.54	11.91	19.45		

Section 1

Re-start Friday 9 September 2011 (sunrise 6:24am, sunset 6:06pm)

2B	Coffs Parc Ferme Out / Service In					7:15
Service A (Coffs Harbour)		(7.54)	(11.91)	(19.45)	0:15	
2C	Coffs Service Out					7:30
RZ	Refuel (All competitors)					
1	Distance to next refuel	(30.00)	(62.98)	(92.98)		
3	Duffus		55.14	55.14	1:10	8:40
SS3	Plum Pudding I	30.00				8:43
RZ	Remote refuel (Woolgoolga - All competitors)		[7.84]			
2	Distance to next refuel	(27.76)	(68.77)	(96.53)		
4	Bucca		27.89	57.89	1:10	9:53
SS4	Bucca I	17.56				9:56
5	Coldwater		14.66	32.22	0:45	10:41
SS5	Coldwater I	10.20				10:44
5A	Coffs Regroup In		34.06	44.26	1:00	11:44
Regroup & Technical Zone					0:20	
5B	Coffs Regroup Out / Service In					12:04
Service B (Coffs Harbour)		(57.76)	(131.75)	(189.51)	0:30	
5C	Coffs Service Out					12:34
RZ	Refuel (All competitors)					
3	Distance to next refuel	(30.00)	(62.98)	(92.98)		
6	Duffus		55.14	55.14	1:10	13:44
SS6	Plum Pudding II	30.00				13:47
RZ	Remote refuel (Woolgoolga - All competitors)		[7.84]			
4	Distance to next refuel	(35.30)	(80.68)	(115.98)		
7	Bucca		27.89	57.89	1:10	14:57
SS7	Bucca I	17.56				15:00
8	Coldwater		14.66	32.22	0:45	15:45
SS8	Coldwater I	10.20				15:48
8A	Coffs Regroup In		34.06	44.26	1:00	16:48 E
Regroup					1:15	
8B	Coffs Regroup Out					18:03
9	Harbour		5.42	5.42	0:13	18:16
SS9	Coffs III	3.77				18:19
10	Harbour		1.34	5.11	0:14	18:33
SS10	Coff IV	3.77				18:36
10A	Parc ferme & Technical Zone In		5.15	8.92	0:18	18:54
10B	Service In					
Service C - Flexi (Coffs Harbour)		(65.30)	(143.66)	(208.96)	0:45	
10C	Service Out / Parc Ferme In					

Section 2

Section 3

Section 4

For all classified cars PF closes at 22:15 E

Totals		123.06	275.41	398.47		
---------------	--	---------------	---------------	---------------	--	--

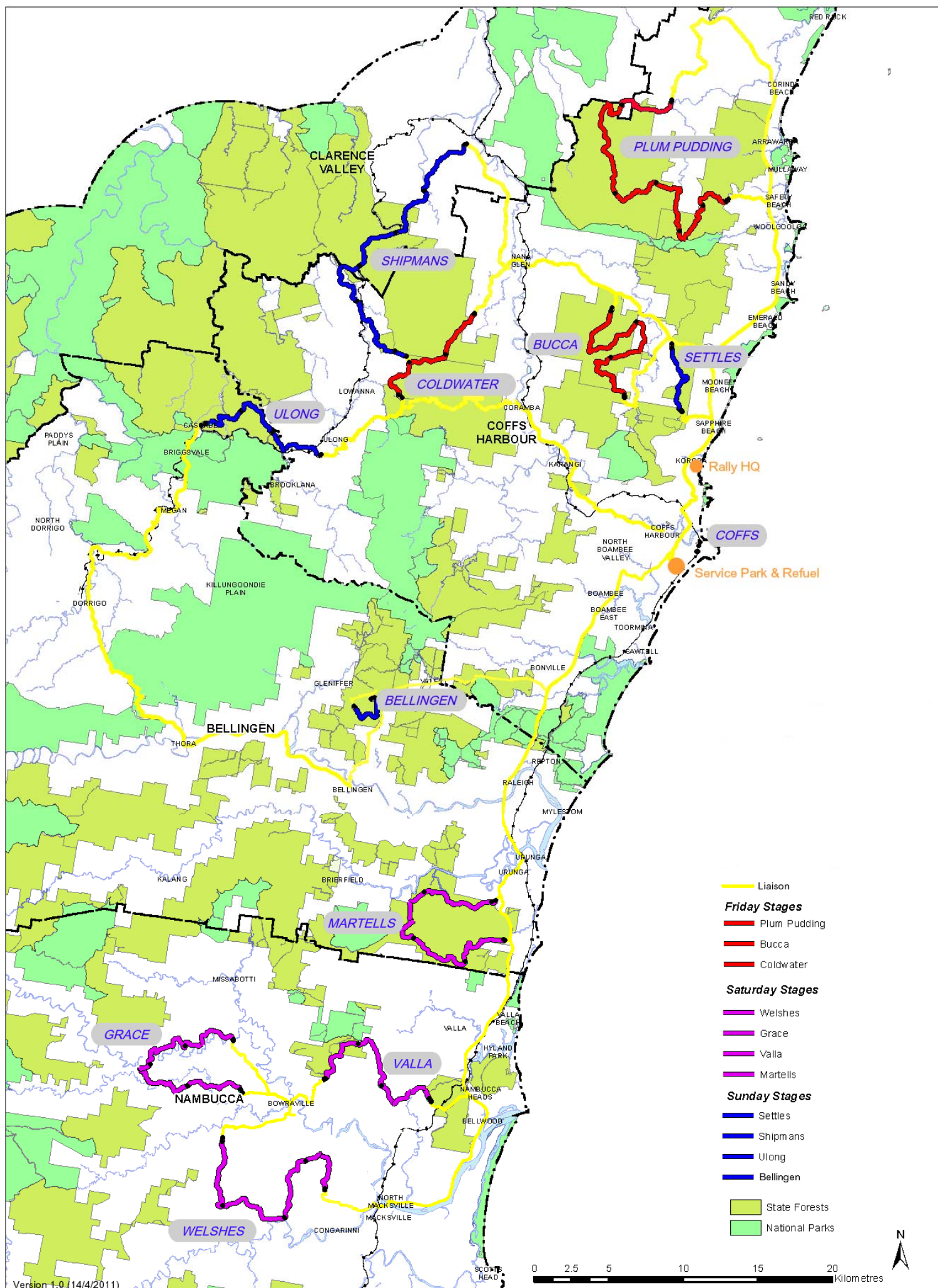
Saturday 10 September (sunrise 6:23am, sunset 6:07pm)

TC SS	Location	SS Dist	Liaison Dist	Total Dist	Time Allowed	1st Car due	
10D	Coffs Parc Ferme Out / Service In					6:30	
	Service D (Coffs Harbour)	(0.00)	(0.00)	(0.00)	0:15		
10E	Coffs Service Out					6:45	
RZ 5	Refuel (All competitors) Distance to next refuel	(40.33)	(81.89)	(122.22)			
11	Coronation Rd		64.09	64.09	1:20	8:05	
SS11	Welshes I	20.52				8:08	
12	Lower Buckra		13.52	34.04	0:50	8:58	
SS12	Grace I	19.81				9:01	
RZ 6	Remote refuel (Bowraville - All competitors) Distance to next refuel	(35.32)	(50.59)	(85.91)			
13	Valla Rd		8.65	28.46	0:50	9:51	
SS13	Valla I	14.87				9:54	
14	Range Rd		15.79	30.66	0:35	10:29	
SS14	Martells I	20.45				10:32	
14A	Coffs Regroup In		30.43	50.88	1:00	11:32	
	Regroup & Technical Zone				0:20		
14B	Coffs Regroup Out / Service In					11:52	
	Service E (Coffs Harbour)	(75.65)	(132.48)	(208.13)	0:30		
14C	Coffs Service Out					12:22	
RZ 7	Refuel (All competitors) Distance to next refuel	(40.33)	(81.89)	(122.22)			
15	Coronation Rd		64.09	64.09	1:20	13:42	
SS15	Welshes II	20.52				13:45	
16	Lower Buckra		13.52	34.04	0:50	14:35	
SS16	Grace II	19.81				14:38	
RZ 8	Remote refuel (Bowraville - All competitors) Distance to next refuel	(42.86)	(62.50)	(105.36)			
17	Valla Rd		8.65	28.46	0:50	15:28	
SS17	Valla II	14.87				15:31	
18	Range Rd		15.79	30.66	0:35	16:06	
SS18	Martells II	20.45				16:09	
18A	Coffs Regroup In		30.43	50.88	1:00	17:09	E
	Regroup				1:00		
18B	Coffs Regroup Out					18:09	
19	Harbour		5.42	5.42	0:13	18:22	
SS19	Coffs V	3.77				18:25	
20	Harbour		1.34	5.11	0:14	18:39	
SS20	Coffs VI	3.77				18:42	
20A	Parc ferme & Technical Zone In		5.15	8.92	0:18	19:00	
20B	Service In						
	Service F - Flexi (Coffs Harbour)	(83.19)	(144.39)	(227.58)	0:45		
20C	Service Out / Parc Ferme In						
							For all classified cars PF closes at 23:00 E
Totals		158.84	276.87	435.71			

Sunday 11 September (sunrise 6:22am, sunset 6:07pm)

TC SS	Location	SS Dist	Liaison Dist	Total Dist	Time Allowed	1st Car due	
20D	Coffs Parc Ferme Out / Service In					6:00	
	Service G (Coffs Harbour)	(0.00)	(0.00)	(0.00)	0:15		
20E	Coffs Service Out					6:15	
RZ 9	Refuel (All competitors) <i>Distance to next refuel</i>	(30.44)	(48.02)	(78.46)			
21	Settles		16.88	16.88	0:25	6:40	
SS21	Settles I	5.26				6:43	
22	Shipmans Rd		25.01	30.27	0:40	7:23	
SS22	Shipmans I	25.18				7:26	
RZ 10	Remote refuel (Ulong - All competitors) <i>Distance to next refuel</i>	(16.14)	(104.12)	(120.26)			
23	Lower Bobo		13.55	38.73	0:47	8:13	
SS23	Ulong I	12.38				8:16	
24	Roaches		66.46	78.84	1:40	9:56	
SS24	Bellingen I	3.76				9:59	
24A	Coffs Regroup In		30.24	34.00	0:40	10:39	
	Regroup & Technical Zone				0:15		
24B	Coffs Regroup Out / Service In					10:54	
	Service H (Coffs Harbour)	(46.58)	(152.14)	(198.72)	0:30		
24C	Coffs Service Out					11:24	
RZ 11	Refuel (All competitors) <i>Distance to next refuel (finish)</i>	(30.44)	(48.02)	(78.46)			
25	Settles		16.88	16.88	0:25	11:49	
SS25	Settles II	5.26				11:52	
26	Shipmans Rd		25.01	30.27	0:40	12:32	
SS26	Shipmans I	25.18				12:35	
RZ 12	Remote refuel (Ulong - All competitors) <i>Distance to next refuel</i>	(16.14)	(108.69)	(124.83)			
27	Lower Bobo		13.55	38.73	0:47	13:22	
SS27	Ulong II	12.38				13:25	
27A	Bellingen Regroup In		51.53	63.91	1:20	14:45	E
	Regroup (Top crews in reverse order)				0:40		
27B	Bellingen Regroup Out					15:25	
28	Roaches		15.00	15.00	0:20	15:45	
SS28	Bellingen II (Power stage)	3.76				15:48	
28A	Coffs Regroup In		30.24	34.00	1:05	16:53	E
	Regroup & Technical Zone				0:03		
28B	Coffs Regroup Out / Service In					16:56	
	Service I (Coffs Harbour)	(46.58)	(152.21)	(198.79)	0:10		
28C	Coffs Service Out					17:06	
28D	Finish - Holding In		4.50	4.50	0:10	17:16	E
	Podium					17:30	
Totals		93.16	308.85	402.01			

Summary:	SS	Liaison	Total	%
Thursday 8 September - 2 SS	7.54	11.91	19.45	38.8
Friday 9 September - 8 SS	123.06	275.41	398.47	30.9
Saturday 10 September - 10 SS	158.84	276.87	435.71	36.5
Sunday 11 September - 8 SS	93.16	308.85	402.01	23.2
Totals	382.60	873.04	1255.64	30.5



Draft Reconnaissance Shedule

Stage	Grp 1		Grp 2	
	P1 & P2		P3 & other RA	
	Open	Close	Open	Close
Tuesday (6th September)				
Settles (SS21/25)	9:15	10:30	7:00	8:15
Plum Pudding (SS3/6)	7:00	9:15	15:00	17:30
Bucca (SS4/7)	10:00	12:00	13:30	15:30
Shipmans (SS22/26)	11:45	14:00	8:30	11:00
Ulong (SS23/27)	13:30	15:30	10:45	12:45
Coldwater (SS5/8)	15:45	17:45	N/A	N/A
Wednesday (7th September)				
Welshes (SS11/15)	8:15	10:00	10:30	12:30
Grace (SS12/16)	9:30	11:30	12:00	14:00
Valla (SS13/17)	10:45	12:45	13:30	15:00
Martells (SS14/18)	12:30	14:30	8:45	10:15
Coldwater (SS5/8)	N/A	N/A	16:00	17:15
Bellingen (SS24 28)	14:00	15:30	7:30	9:00
Coffs (SS1/2/9/10/19/20)	18:00	19:00	18:30	19:30

	Grp 1		Grp 2	
	Tues	Wed	Tues	Wed
SS distance (km)	204	169	184	189
Approx. liaison distance (km)	247	162	261	252

Version 1.0 (14/4/2011)