



WRC
FIA WORLD RALLY
CHAMPIONSHIP

wrc.com

NESTE OIL

Rally
Finland

More than a rally.

Supplementary regulations Kilpailun säännöt

1. - 4.8.2012



www.nesteoilrallyfinland.fi

NESTE OIL

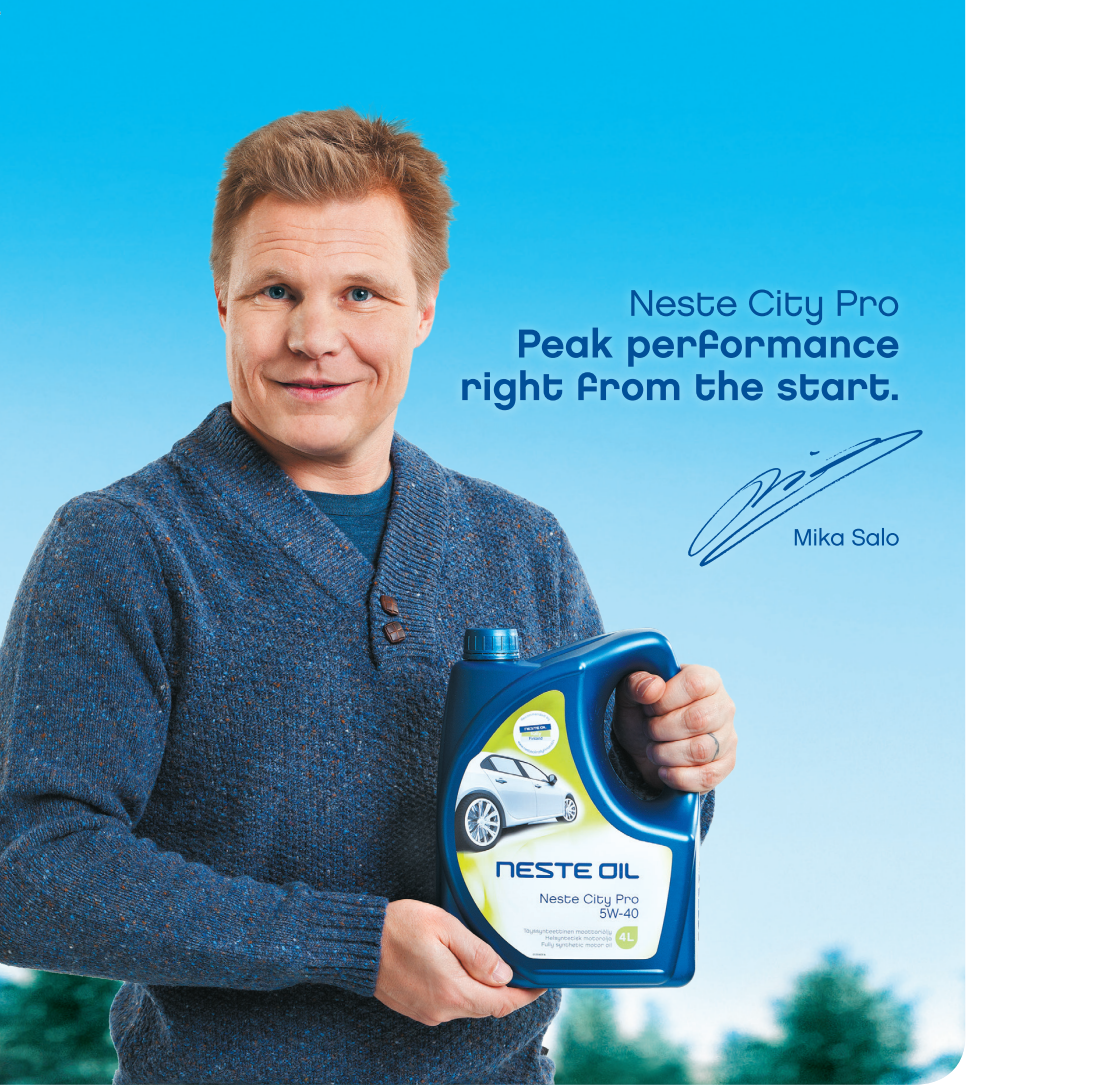


WRC
FIA WORLD RALLY
CHAMPIONSHIP



EDOX
Swiss Watches

wrc.com



Neste City Pro
Peak performance
right from the start.


Mika Salo

Be it the most freezing winter or scorching summer ensure top-class lubrication right from the start. Fully synthetic Neste City Pro motor oils are made from Neste Oil's top-quality base oils and exceed the tightening performance requirements set by car manufacturers. Ensure low fuel consumption lower environmental emissions and a long service life for your engine. Neste City Pro, motor oils for a new age – the choice of demanding motorists for modern and advanced engines.

www.neste.fi

NESTE OIL



Neste Oil Rally Finland

1-4 August 2012

Supplementary Regulations

FIA World Rally Championship for Drivers

FIA World Rally Championship for Co-Drivers

FIA World Rally Championship for Manufacturers

FIA Super 2000 World Rally Championship for Drivers

FIA Super 2000 World Rally Championship for Co-Drivers

WRC Academy Cup for Drivers

WRC Academy Cup for Co-Drivers

Supplementary Regulations

1.	Introduction	5
2.	Organisation and Description	5
3.	Programme	7
4.	Entries	10
5.	Insurance	14
6.	Advertising and Identification	14
7.	Tyres	15
8.	Fuel	16
9.	Reconnaissance	17
10.	Administrative Checks	19
11.	Scrutineering, Sealing and Marking	20
12.	Other procedures	21
13.	Identification of Officials	25
14.	Prizes	25
15.	Final Checks and Protests	26
	Appendix 1 - Itinerary	28
	Appendix 1A - WRC Academy Itinerary	31
	Appendix 2 - Reconnaissance Timetable	32
	Appendix 3 - Identification Numbers and Advertising	33
	Appendix 4 - Competitors' Relations Officers	35

1. Introduction

- 1.1** This rally will be run in compliance with the FIA International Sporting Code (the Code) and its appendices, the 2012 FIA World Rally Championship Sporting Regulations (FIA WRC), the National Sporting Regulations which comply with the FIA regulations and these Supplementary Regulations (SR). In case of any dispute, the English text of these Supplementary Regulations will be binding.

Modifications, amendments and/or changes to these Supplementary Regulations will be announced only by numbered and dated Bulletins (issued by the organiser or the Stewards).

Additional non-regulatory information will be published in Rally Guide 2 (RG 2), issued on Thursday 5 July 2012. The 2012 FIA World Rally Championship Sporting Regulations can be found at the FIA website <http://www.fia.com/en-GB/sport/regulations/Pages/FIARallyChampionships.aspx>.

1.2 Road Surface

The special stages will be run on gravel.

1.3 Overall SS Distance and total distance of the itinerary

Overall SS distance: 303,52 km

Total distance of the itinerary: 1627,77 km

2. Organisation and Description

2.1 FIA Titles for which the Rally counts

FIA World Rally Championship for Drivers

FIA World Rally Championship for Co-Drivers

FIA World Rally Championship for Manufacturers

FIA Super 2000 World Rally Championship for Drivers

FIA Super 2000 World Rally Championship for Co-Drivers

FIA WRC Academy Cup for Drivers

FIA WRC Academy Cup for Co-Drivers

2.2 Visa Numbers - FIA and ASN

FIA Visa no.: 8WRC/280512 issued on 28 May 2012

ASN Visa no.: 31/R/12 issued on 25 April 2012

2.3 Organiser's Name, Address and Contact Details

AKK Sports Ltd

Postal address:
AKK Sports Ltd
Neste Oil Rally Finland
P.O.Box 19
FI-01301 Vantaa

Visitors'/Courier address:
Kellokukantie 7, FI-01300 Vantaa

tel. +358 207 219 460
fax +358 207 219 470
e-mail rally@autourheilu.fi
internet www.nesteoilrallyfinland.fi

2.4 Organisation Committee

Promoter	Ms. Tiina Lehmonen
Clerk of the Course	Mr. Kai Tarkiainen
Deputy Clerk of the Course	Mr. Seppo Harjanne
Assistant Clerk of the Course	Mr. Kari Nuutinen
Assistant Clerk of the Course	Mr. Juha Hautsalo
Secretary of the Rally	Mr. Henrik Frank
Press Officer	Ms. Anu Haapalainen
Marketing Manager	Ms. Heli Kemppainen
Communications Manager	Ms. Rita Pasanen
Chief Medical Officer	Dr. Timo Kaukonen
Assistant Chief Medical Officer	Dr. Tom Silfvast
Route Manager	Mr. Pekka Tähtinen
Safety & Rescue	Mr. Jari Wilén
	Mr. Pentti Kangas
	Mr. Mika Häyhänen
Service Park Co-ordinator	Mr. Mikko Huuska
Results & Timekeeping	Mr. Riku Bitter
	Mr. Petri Tilus
ASN Scrutineer	Mr. Petteri Sappinen
Radio Communications	Mr. Asko Linnansuu
Materials & Equipment	Mr. Pasi Harjula
Technical Co-ordinator	Mr. Jukka Monto
Traffic Control	Mr. Juha Elomaa
	Mr. Matti Kaukoranta

2.5 Stewards of the Meeting

Chairman

Mr. Morrie Chandler
Mr. Andrew Mallalieu
Mr. Timo Rautiainen
Ms. Yvonne Gilli

Secretary to the Stewards

2.6 FIA Delegates and Observer

WRC Manager
Media Delegate
Medical Delegate
Safety Delegate
Technical Delegate
Assistant to Technical Delegate
Assistant to Technical Delegate
Assistant to Technical Delegate
Assistant to Technical Delegate
Assistant to Technical Delegate

Ms. Michèle Mouton
Mrs. Hayley Gallagher
Mr. Jean Duby
Mr. Jacek Bartos
Mr. Jérôme Toquet
Mr. Luca Gibello
Mr. Karl-Heinz Goldstein
Mr. Cronge Nordstedt
Mr. Sylvain Rivier
Mr. Jean-Charles Roy

2.7 Senior Officials

See Organisation Committee above
Competitors' Relations Officers

Ms. Katja Niemelä
Ms. Tiina Nuutinen

2.8 Location of Rally HQ

Jyväskylä Paviljonki Congress Centre
Lutakonaukio 12, Jyväskylä
tel. +358 20 7219 460
fax +358 20 7219 470
e-mail rally@autourheilu.fi

2.9 Official Notice Board location

Rally Office, Jyväskylä Paviljonki Congress Centre
Virtual notice board available at www.nesteoilrallyfinland.fi

3. Programme

Entries open upon publication of these regulations.

Mon 2 July 2012

18.00 Closing date for entries

Closing date for reconnaissance application for non entrants

Closing date for radio licence applications

Closing date for tyre orders

Thu 5 July 2012

Issuing of Road Book, Map and Rally Guide 2

Publication of Draft Entry List (subject to FIA approval)

Competitors to notify organiser of joint service areas

Closing date for ordering extra facilities in Service Park (see form on website)

Wed 11 July 2012

Closing date for ordering FIA fuel

Sun 29 July 2012

	Official Notice Board available	Rally HQ
16.00-21.00	Rally Office open	Rally HQ
16.00-19.00	Collection of reconnaissance GPS trackers	Rally HQ
16.00-21.00	Reconnaissance registration (all drivers)	Rally Office
16.00-21.00	Collection of documents and materials	Rally Office
16.00-21.00	Administrative Checks (P3 & non priority)	Rally Office

Mon 30 July 2012

08.00-20.00	Rally Office open	
08.00-10.00	Reconnaissance registration (all drivers)	Rally Office
08.00-10.00	Collection of documents and materials	Rally Office
08.00-10.00	Admin Checks (P3 & non-P, by appointment)	Rally Office
08.00-16.45	Day 1 of reconnaissance, Priority drivers (details in Appendix 2)	
11.00-20.00	Day 1 of reconnaissance, other drivers (details in Appendix 2)	

Tue 31 July 2012

07.00-20.00	Rally Office open	
07.00-18.00	Day 2 of reconnaissance, Priority drivers (details in Appendix 2)	
08.30-19.00	Day 2 of reconnaissance, other drivers (details in Appendix 2)	
14.00	Media accreditation opens	Sokos Hotel Alexandra
14.00	Media Centre opens	Rally HQ
14.00-18.00	Administrative Checks (P1 & P2)	Rally Office
17.00	Team Managers' Meeting	Rally HQ
18.00-20.00	Collection of FIA Safety Tracking Systems	S1-T truck in SP

Wed 1 August 2012

07.30-22.00	Rally Office open	
07.30-13.00	Day 3 of reconnaissance, Priority drivers (details in Appendix 2)	
08.00-11.30	Sealing and marking, Manufacturers and WRC Teams	
		Service Park Paviljonki
08.30-13.15	Day 3 of reconnaissance, other drivers (details in Appendix 2)	
09.00-15.00	Collection of FIA Safety Tracking Systems	S1-T truck in SP
11.30-12.30	Weight checks, Manufacturers and WRC Teams	
		Service Park Paviljonki
12.00	Service Park opens for non priority drivers	Service Park Paviljonki
13.00-15.30	Scrutineering, sealing and marking (P2&P3)	A-katsastus, Jyväskylä
14.00-17.00	Return of reconnaissance trackers	Rally HQ
15.30-18.00	Scrutineering, sealing and marking (non-P)	A-katsastus, Jyväskylä
16.00	Publication of TC SP OUT arrival times for Qualifying Stage	
		Official Notice Board
16.00	Start of Free Practice	Ruuhimäki
18.00	Free Practise closes	Ruuhimäki
18.50	Service OUT to Qualifying Stage	Service Park Paviljonki
19.30	Start of Qualifying Stage	Ruuhimäki
20.10	Qualifying Parc Fermé for P1 & P2	Service Park Paviljonki
21.30	Start order selection	Service Park Paviljonki
22.00	Shakedown closes	Ruuhimäki
22.00	FIA Pre-Event Press Conference	Media Centre, HQ

Thu 2 August 2012

07.00-24.00	Rally Office open	
07.00-12.30	Scrutineering, sealing and marking (non-P)	A-katsastus, Jyväskylä
10.00-11.00	FIA Action for Road Safety event	Service Park Paviljonki
12.00	Helicopter pilots' briefing	Jyväskylä Airport
12.30	Publication of start list for Section 1	Official Notice Board
13.30	Start of the rally	Service Park Paviljonki
16.00	Rally Show	Lahti Harbour
23.20	Overnight Parc Fermé	Rally HQ
24.00	Publication of start list for Section 4	Official Notice Board

Fri 3 August 2012

06.15-23.00	Rally Office open	
06.30	Start Section 4	Rally HQ
21.15	Overnight Parc Fermé	Rally HQ
22.30	Publication of start list for Section 7	Official Notice Board

Sat 4 August 2012

06.45-23.00 Rally Office open

07.00 Start Section 7

Rally HQ

19.00 Finish of the rally - FIA WRC Academy

Service Park Paviljonki

19.30 Podium - FIA WRC Academy

Service Park Paviljonki

20.13 Finish of the rally

Service Park Paviljonki

20.15 Final scrutineering - FIA WRC Academy

JAO, Viitaniemi

20.30 Publication of provisional final classification - FIA WRC Academy

Official Notice Board

21.00 Podium - Prize-giving

Service Park Paviljonki

21.45 FIA Post-Event Press Conference

Media Centre, HQ

22.00 Final scrutineering

JAO, Viitaniemi

22.15 Publication of provisional final classification

Official Notice Board

24.00 Parc Fermé closes

Rally HQ

Sun 5 August 2012

10.00-12.00 Rally Office open

10.00-12.00 Parc Fermé open for car collection

Rally HQ

4. Entries

4.1 Close of Entries

Close of entries is Monday 2 July 2012 at 18.00 (17.00 CET).

4.2 Entry Procedure

Anybody wishing to take part in Neste Oil Rally Finland 2012 must fill in the electronic entry form published at the same time with Supplementary Regulations on the event website at www.nesteoilrallyfinland.fi.

By sending this electronic form, the competitor undertakes to abide by the rules and regulations of the competition. Competitors will sign the entry form in Administrative Checks.

If a competitor cannot make the entry on the internet, he must contact the rally secretariat before close of entries for further instructions. Manufacturers and WRC Teams registered in the FIA World Rally Championship make their entries to the organiser using the entry form supplied by the FIA.

The entry will only be accepted if accompanied by the total amount of the entry fee, under pain of refusal to start. Proof of payment must be sent by e-mail to the rally secretariat by the close of entries (a scanned copy of bank documents).

Competitors and drivers who wish to take part in an international competition organised abroad can only do so with the approval of their own ASN.

4.3 Classes

Entrants will be divided into 4 categories (in accordance with the present Regulations approved by the FIA):

- Priority 1 (P1)
- Priority 2 (P2)
- Priority 3 (P3)
- Non-priority

Classes will be as follows:

Classes	Groups
WRC	WRC (2011): 1.6 T engine with WRC kit
1	S2000 - Rally: 1.6 T engine with a 33 mm restrictor
2	S2000 - Rally: 2.0 Atmospheric S2000 - Rally: 1.6 T engine with a 30 mm restrictor Group R4
3	Group N car over 2000 cc (current N4)
4	RGT Cars
5	Group A car over 1600cc and up to 2000cc Super 1600 R2C (over 1600cc and up to 2000cc) R3C (over 1600 cc and up to 2000cc) R3T (up tp 1600cc/nominal) R3D (up to 2000cc/nominal)
6	Group A car over 1400cc and up to 1600cc R2B (over 1400cc and up to 1600cc) kit-car over 1400cc and up to 1600cc
7	Group A car up to 1400cc kit-car up to 1400cc
8	Group N car over 1600cc and up to 2000cc
9	Group N car over 1400cc and up to 1600cc R1B (over 1400cc and up to 1600cc)

10	Group N car up to 1400cc R1A (up to 1400cc)
----	--

4.4 Entry Fees and Packages for Private Entrants

Entry fees for the various categories are as described below:

Manufacturers, WRC Teams and SWRC:
As per FIA WRC, Appendix VI, with local VAT added (9%), see also Art. 4.5.

- Other legal entrants (Classes WRC, 1-10) € 5 500 + 9% VAT = € 5 995
- Private entries (Classes WRC, 1-10) € 3 000 + 9% VAT = € 3 270
- Drivers registered to Finnish Rally Championship € 2 500 + 9% VAT = € 2 725
- Reconnaissance Only € 1 000 + 9% VAT = € 1090

Legal entrant:

- ASN, Company, Team or a Sporting Association holding a Legal Entrant’s Licence, who enters one or more cars.
- A person holding a Personal Entrant Licence, but who is not a member of the crew, and who enters one or more cars.

Private entrant:

- The member of the crew holding a Personal Entrant License, who enters his own car and competes under his/her own name.

Contents of entry packages for Manufacturer, WRC Team and SWRC entries: See Appendix VI of FIA WRC Sporting Regulations.

The following table describes the contents of the package for Legal entrants and Private entries (FIA WRC Academy as agreed with Academy coordination).

Product	Legal Entrant	Private Entrant
Vehicle Plates		
Service Plates	2	2
Auxiliary Plates	3	-
Passes		
Service Passes	12	6

Driver Passes	2	2
Administration		
Supplementary Regulations	2(2)	1(1)
Official Route Maps	4 (4)	2 (1)
Road Books	2 (1)	2 (1)
Official Programmes	5	2
Rally Guide 1	Rally Guide 1 available only at www.nesteoilrallyfinland.fi	
Rally Guide 2	Rally Guide 2 available only at www.nesteoilrallyfinland.fi	
Results	All results available at www.nesteoilrallyfinland.fi	
Service Park Area	15x10 m	10x10 m

() number of copies to be mailed to competitor

4.5 Payment details

The entry fee must be paid by bank transfer to the organiser's bank account:

Name of the bank: Nordea Pankki Suomi
Address: 1555 Nordea Järjestöpankki
SWIFT code: NDEAFIHH
IBAN account no: FI90 1454 3000 1039 71

Please note that foreign payments are only accepted if the IBAN account number is used! All expenses for the bank transfer are payable by the competitor. Cheques are not accepted. Please note that the amount is payable in Euros only.

4.6 Refunds

Entry fees will be refunded in full

- a) to candidates whose entry has not been accepted
- b) in case of the rally not taking place

Organisers may refund 50% of the entry fee to those competitors who, for reasons "force majeure" (duly certified by their ASN), were unable to start in the rally. With the request of entry fee refund the competitor must send the organiser a certificate of "force majeure" given by his own ASN.

5. Insurance

5.1 Traffic insurance (obligatory)

All cars participating in the rally must have a valid obligatory traffic insurance towards third parties. In Finland the 'Green Card' (International Motor Insurance Card) system is applied. For cars coming from countries outside the Green Card system and EEA-countries, a Nordic frontier insurance must be taken at the Danish, Finnish, Norwegian or Swedish border. Traffic insurance guarantees competitor's cover for civil responsibility towards third parties. The organiser will issue third party insurance cover valid on special stages for cars registered abroad. Insurance certificate together with a special sticker will be handed to the teams before the start of the Free Practice/Qualifying/Sphakedown.

All competitors **MUST** be able to show their Green Cards at the administrative checking. The burden of proof for a valid insurance rests solely on the competitor.

5.2 Insurance coverage

- property damages max. € 3 300 000
- bodily injuries no limit of indemnification

5.3 Limitation of Indemnity

The organiser declines any liability concerning the consequences caused by any fraudulent action taken by the competitor, may this be against the rules and regulations of the rally or against the laws of the country.

Any service vehicles or reconnaissance cars, even those bearing the official identification of the organiser, may under no circumstances be considered as official participants of the rally, hence their insurance policies remain the sole responsibility of the owner.

6. Advertising and Identification (FIA WRC, Art. 18 and 19)

6.1 National Restrictions on Advertising

Tobacco

Advertising of tobacco, tobacco products and imitations, as well as smokers' requisites is forbidden according to the Finnish legislation on cars, competition/service equipment and on the team members' outfits.

Alcohol

The advertising of alcoholic beverages is limited according to the Finnish legislation to mild alcoholic beverages under 22% alcohol in volume. Such brand

logos may appear on the competition and service vehicles, as well as on drivers' overalls during the event, but the appearance of drivers in advertisements of such beverages can be interpreted as connecting alcohol with driving and is therefore not allowed. For more information, please contact the secreteriat.

6.2 Organiser's Advertising

On the competition numbers the advertising will be NESTE OIL. There will be no organiser's optional advertising.

6.3 Identification

Competition numbers are as per FIA WRC, art. 18 and 19.2 and Appendix 3 of these Supplementary Regulations. These must be visible through the whole duration of the rally.

The following stickers will be placed on the car by the officials:

- at scrutineering: "Scrutineered" sticker below the left rear side window.
- before start of sections 1, 4 and 7: a "2 min" sticker on the front right-hand corner of the roof for competitors with a start interval of 2 minutes.

7. Tyres

7.1 Tyres specified for use during the rally

In addition to complying with Art. 60, 61 and 62 of FIA WRC, the following quantities and type of tyre are confirmed for use.

<i>Driver Priority</i>	<i>Max. number of tyres</i>	<i>Extra if Shakedown undertaken</i>
Priority 1	40	-
Priority 2	40	-
Priority 3 4WD	28	5
2WD cars (P3 and non-priority)	42	6 (P3 only)
non-priority with WRC/S2000/R4 Cars	28	n/a
non-priority all other 4WD Cars	42	n/a
WRC Academy	18	no extras

<i>FIA Listed Tyre Manufacturer</i>	<i>Tyre</i>	<i>Compound</i>
Michelin	Latitude Cross S1L Latitude Cross S1R 17/65-15	Soft
DMACK	215/65 R15 DMG Plus S (Soft)	Soft

WRC Academy competitors may only use Pirelli K4 175/70-15 tyres.

7.2 Tyres for Use on Reconnaissance

All cars must use road-homologated tyres with E or DOT type approval.

8. Fuel

8.1 Ordering Procedure

All FIA Priority drivers must use the FIA fuel. The supplier appointed by the FIA for 2012 is Petrochem Carless, which has authorised Vital Equipment Ltd to carry out fuel ordering, supply and refuel services.

Non-Priority drivers may use either FIA fuel following the same conditions and rules as the Priority drivers, or commercially available pump fuel (including diesel), dispensed only from pumps at filling stations nominated in the Road Book. For environmental and safety reasons no refuelling is allowed in the Service Park (no refuel from cans, drums or similar).

8.2 Closing date for ordering FIA fuel

All competitors using FIA fuel must place their fuel order directly with Vital Equipment Ltd no later than Wednesday 11 July 2012.

The order form must be e-mailed to wrcfuelorder@vitalequipment.co.uk or faxed to +44 1981 241169.

The order form issued by Carless-Vital Equipment is available on the event website at www.nesteoilrallyfinland.fi.

Payment details by Bank transfer to:

Owner of account: Petrochem Carless Ltd re World Rally
Deposit Bank: Lloyds TSB Bank
Code: 30-00-09



Account No: 86350201
IBAN: GB 94 LOYD 3000 0986 3502 01
SWIFT: LOYDGB21013

The cost of the fuel including taxes and refuel services is € 4.90 per litre, dispensed into rally cars. It is a condition of supply that payment must be received in full before delivery can be made. The balance of non-used fuel will be credited after the rally.

8.3 Distribution During the Rally for Non-Priority Drivers

Non-Priority competitors must pay attention to the fact that the refuel locations for commercially available pump fuel (petrol stations) and the distances between them are not the ones given in the itinerary as Appendix 1, but will be given as a separate document at a later date, as well as in the road book of the rally.

9. Reconnaissance

9.1 Procedure for Registration

Reconnaissance registration will take place as follows:

Place:	Rally Office in Jyväskylä Paviljonki
Date and time:	Sunday 29 July 2012 at 16.00-21.00 Monday 30 July 2012 at 08.00-10.00

For the Priority 1 & 2 drivers, the materials can be collected by a team member duly designated in writing. Others have to make the registration themselves.

When registering for the reconnaissance and signing for the material the competitor must give the organiser an information sheet (see Rally Guide 2) including details of the reconnaissance car, mobile phone number and place where the competitor is accommodated.

The reconnaissance car identification must be attached as follows and kept visible for the whole duration of the reconnaissance period:

1. Priority group identification (yellow or white) on the left and the right rear side windows
2. Competitor numbers (orange) both on the windscreen and the rear window (top centre)

9.2 Specific and National Restrictions

A. General Running of the Reconnaissance

Provision is made for a maximum of two passages through each special stage for each entered crew during the reconnaissance. This regulation concerns also the special stages which are driven more than once, either in their entirety or in part.

The crews are not allowed to drive in the opposite direction of the rally on the special stages, unless given particular directions to do so by the organiser, their representative or the police. The crews are required to present their reconnaissance card at the start and finish of each special stage for time entry. The crews are only allowed to enter and leave the special stages through start and finish controls.

Reconnaissance outside the schedule as set by the organisers is considered a very serious offence and will be reported to the Stewards who may apply penalties. If a competitor is found on roads used as special stages in the rally outside the reconnaissance schedule given in Appendix 2, he will be reported to the Stewards. AKK-Motorsport will penalise the Finnish drivers with a national suspension. In case of a foreign competitor, his ASN will be informed for further measures to be taken. Traffic on special stages before the rally will regularly be checked by the organisers and also by the police.

B. Traffic and Reconnaissance Vehicles

A maximum speed limit of 80 km/h is imposed on all special stages during reconnaissance unless a lower limit is indicated by traffic signs or by signs placed by the organiser. The competitors must drive in a manner that does not endanger or inconvenience other traffic or people living near the stages. The organiser will control speeds used as well as the manner of driving during reconnaissance. The police will penalise traffic infringements according to Finnish Traffic Law.

It is emphasised that reconnaissance is not practice. All the Road Traffic Laws of Finland must be strictly adhered to and the safety and rights of other road users must be respected and reconnaissance cars have to be covered by insurance as required by the law, no responsibility being imputable to the organisers.

All reconnaissance operations, for all crews, may only be carried out using cars complying with the specifications defined in FIA WRC, art. 25.1.

In Finland the use of radar detectors is forbidden and if a competitor is found using a detector during the reconnaissance or the competition, he will be refused

to start or excluded.

C. Reconnaissance only

Any driver holding the appropriate international licence may take part in reconnaissance for a rally. The regulations on reconnaissance must be respected in their entirety and the driver must inform the organiser of his wish to take part in the reconnaissance within the entry period of the rally. The driver must pay a fee of € 1000 + 9% VAT= € 1090 for taking part in this reconnaissance.

9.3 Installation of Speed Control Checking Devices

The names of any non-priority drivers required by the FIA to carry a Reconnaissance Tracking box will be detailed in a Bulletin (FIA WRC, Art. 25.4.4). There will be a fee payable. More accurate instructions of the procedure will be given in RG 2. For the drivers designated by the FIA, these trackers must be collected from the Rally HQ on Sunday, 29 July 2012 at 16.00-19.00, and must be returned on Wednesday, 1 August 2012 at 16.00-19.00.

10. Administrative Checks

10.1 Documents to be Presented

At the Administrative Checks the following documents will be checked:

- drivers' competition and driving licences
- competitor/entrant licence
- drivers' medical certificates of aptitude (if separate from competition licence)
- authorisation for the drivers by their ASN to take part in the rally
- rally car's insurance cover towards the third parties (Green Card)
- rally car's registration papers
- correctness of all information given in the entry form
- signatures of entry forms from all drivers

10.2 Schedule

Administrative checks for P1 and P2 drivers will take place on Tuesday, 31 July 2012, please contact Rally Office to agree a time. Administrative checks for P3 and non-priority drivers will take place on Sunday, 29 July 2012 according to the following schedule:

Time	Competitor numbers
16.00 - 16.30	31 - 40
16.30 - 17.00	41 - 50
17.00 - 17.30	51 - 60
17.30 - 18.00	61 - 70

18.00 - 18.30	71 - 80
18.30 - 19.00	81 - 90
19.00 - 19.30	91 - 100
19.30 - 20.00	101 - 110
20.00 - 20.30	111 - 120
20.30 - 21.00	121 - 130

Administrative checks on Monday 30 July at 08.00-10.00, appointment only for P3 and non-priority drivers.

11. Scrutineering, Sealing and Marking

11.1 Scrutineering Venue and Timetable

A-katsastus, Kuormaajantie 2 A, Jyväskylä

Priority 2, 3 and non-priority drivers:

Wednesday 1 August 2012

P2 & P3: 13.00-15.30

non-priority: 15.30-18.00

Non-priority drivers:

Thursday 2 August 2012 at 07.00-12.30

11.2 Mud flaps

Fitting of transversal mud flaps (all wheels) is mandatory in conformity with Appendix J, Art. 252.7.7.

11.3 Windows/Nets

Silvered or tinted films are not allowed (Appendix J, Art. 253.11). Anti-shatter film must be used according to the same article. Window nets are not allowed.

11.4 Drivers' Safety Equipment

At scrutineering competitors must produce all items of clothing including helmets and head restraints intended to be used. Condition of the equipment and compliance with Appendix L Chapter III will be checked.

11.5 Noise level

There will be a mandatory noise check at the scrutineering (maximum 103 dB at 3500 rpm). Any vehicle over this limit will not pass scrutineering.

11.6 Special National Requirements

Each competing car must be equipped with a first aid kit and 1 reflecting triangle, under pain of refusal to start. Competitors are also reminded that in addition, two belt cutters must be carried on board at all times. They must be easily accessible to driver and co-driver when seated with their harnesses fastened (the Code, Appendix J, Art. 253, 6.).

11.7 Installation of Safety Tracking System (FIA WRC Art. 65.2)

All competitors must make provision in their rally cars for the installation of the FIA Safety Tracking System and the emergency button. Installation instructions will be given later in RG 2. A deposit with credit card imprint will be collected from the competitors, when they pick up their equipment from the Stage 1-T truck according to the programme given in Art. 3 of the SR. The functioning of the equipment will be checked at the scrutineering. Should a crew retire, the equipment must be returned immediately to Stage One Tech (exact location given in RG2). The units may be removed in the Final Parc Fermé, so cars must not be locked.

11.8 Sealing

Sealing of the cars will be carried out according to FIA WRC Art. 63–65. It is reminded that sealing of the transmissions (including spare parts) with wire and tag applies to all cars (63.3.2), including non-priority drivers' cars. Therefore, all underbody protection must be removed for scrutineering, but must be kept with the car for weight checks.

Car's chassis and engine will also be marked (FIA WRC, Art. 26.1.6). Sealing wires must be installed according to the instructions given at a later date.

11.9 Homologation forms

All cars must have a certified homologation form (the Code, Appendix J, Art. 251.2.1.8) available at scrutineering (FIA WRC, Art. 26.1.4). In addition, homologation forms for the catalytic converter and rollcage (if homologated) must be with the car at scrutineering.

12. Other Procedures

12.1 Start of the Rally

There will be no separate ceremonial start of the rally.

The cars will start from TC 0 on Thursday 2 August 2012 from 13.30 according to the starting list published at 12.30 on the same day.

The crews are requested to be in the start area max. 15 minutes and min. 5 minutes before each car's individual starting time.

FIA fuel is available immediately after TC 0 and again on the road section to the Lahti regroup (before SS 1).

12.2 Permitted Early Check-In at Time Controls

The crews may report before their due time at the following Time Controls without incurring a penalty:

- TC 0A Regroup IN
- TC 3C Flexi Service OUT - Parc fermé IN
- TC 12C Flexi Service OUT - Parc fermé IN
- TC 18C Finish of the Rally (Holding Area IN)

12.3 Re-Start after Retirement on Sections 1-3 / Rally 2

Crews may re-enter the rally after retirement on Sections 1-3. The start order for Section 4 will remain the same as for Section 1, except for the crews re-starting in Rally 2, who will be placed at the end of their re-start group (P1/P2, P3/others), in the order of the provisional classification after Section 3. FIA WRC, Art. 45.2 may be applied.

12.4 Official Time used during the Rally

Official time during the rally will be that of the GPS (UTC plus offset to local time).

12.5 Onboard Camera Tape Exchange (FIA WRC, Art. 31.8)

In addition to locations allowed by FIA WRC regulations, Art. 31.8, the official broadcaster may collect Onboard Camera Tapes from rally cars at the re-fuel zone and at the Light Fitting Zone after TC 2B.

12.6 Car Wash Facility

A car wash facility will be available for competitors before the Media Zone entrance (TC 3A, 5A, 8A, 12A, 14A, 16A and 18A). Washing cars inside the service area is not allowed. Rims and other parts may be washed behind team areas.

12.7 FIA Action for Road Safety event

As part of our commitment to the FIA Action for Road Safety we will organise a children's traffic school in Service Park Paviljonki on Thursday, 2 August at 10.00 to 11.00. Driver presence will be required. Drivers concerned will be informed

after close of entries. More information will be given in RG2.

12.8 Regroup and Rally Show in Lahti Harbour

The Regroup in the Lahti harbour area on Thursday 2 August 2012 will include promotional elements involving driver participation. During the regroup, all crews must be at the organiser's disposal for the first 5 minutes after they have parked their car in the regroup, for public promotion purposes (meeting fans, signing autographs). Teams are encouraged to bring any promotional materials to be signed and given to the fans.

All crews must be ready with their cars 5 minutes before their due time out of the regroup. They must follow organiser's instructions to drive their car onto a ramp, where interviews will take place before the TC OUT.

12.9 Super Special Stages 2 Jokimaa and 12 Killeri

On Super Special Stages Jokimaa and Killeri, two cars will be given the start at the same time (in the same manner as on the other stages) on parallel positions on the stage. The first car entering the starting area will be directed to position 1 and the second car to position 2. The cars will follow the route of the stage, changing lanes in a tunnel/bridge combination and crossing the finish line at the same position where they started.

Should a car fail to complete Super Special Stage Jokimaa or Killeri in the correct manner, the organiser will place it on the road section after the STOP control.

If the running of a Super Special is interrupted, this will be signalled to the drivers by showing of yellow flags. When given this signal, the driver must immediately reduce speed and follow the instructions of any marshals or other officials. Failure to comply with this rule will entail a penalty at the discretion of the Stewards.

The organiser reserves the right to change the running order of the cars on SS 12 to its discretion in the neutralisation between TC 12 and SS start.

During reconnaissance, the crews may run the loop twice from starting position 1. There will not be a separate run for starting position 2. Speed limit for the reconnaissance of the Super Special Stages is 40 km/h. Also see Appendix 2 of the SR.

12.10 Light-fitting Zone

A light-fitting zone will be set up in Hartola, on the road section between TC 2B and TC 3, for competitors to install extra head-lights for the last SS of the day. For this purpose, it is allowed for one service/auxiliary vehicle to visit the adjacent parking area, in order to bring the equipment necessary for the installation. After having reported to the scrutineers present at the area, two mechanics per car are allowed to enter the zone to assist the drivers in the installation of the lights.

Only tools and equipment directly involved in the installation of the lights may be brought into the zone. Apart from the extra head-lights, nothing may be left with or removed from the car. Any work not directly involved with the installation of the extra head-lights is strictly prohibited.

12.11 WRC Academy

12.11.1 Restart / Rally 2

For the competitors in the WRC Academy, the time penalty in FIA WRC, Art. 46.2.3 will be added to the fastest time set by a driver in the WRC Academy.

12.11.2 Finish Procedure

The competitive element of the rally will finish at TC 17C in the Academy itinerary. From this point the cars are under parc fermé rules until the parc fermé is opened at the instruction of the stewards.

The finish ceremony will take place in Service Park Paviljonki, on the WRC podium, on Saturday 4 August 2012 at 19h30. The winning car will also drive over the finish ramp of the rally proper, as directed by the organiser. Scrutineering of the Academy cars will be adapted to this procedure.

Details will be given in RG2.

12.11.3 WRC Academy Itinerary

See Appendix 1A. The competitors should respect the start time given at SS 17 on the following road section to TC 17A. Due times given in the itinerary may change according to start time of first Academy competitor on SS 17 (except for the time of the Podium).

12.12 Finish procedure

A podium ceremony for the Top 3 crews of S-WRC will follow the ceremony for the overall winners. Details of the ceremonies will be given in RG2.

12.13 Final Parc Fermé

Provided the Stewards have authorised the opening of the final Parc Fermé, cars must be removed either by 24.00 hrs on Saturday 4 August 2012 or on Sunday 5 August 2012 between 10.00 and 12.00.

13. Identification of Officials

The post officials and other officials will be identified as follows:

SS Commander	red tabard
SS Safety Officer	green tabard
SS Chief Marshal	dark green tabard
Post Chief	blue tabard
Timekeepers	yellow tabard
Scrutineers	black tabard 'SCRUTINEER'
TC Officials	green tabard 'OFFICIAL'
SS Doctor	white tabard 'DOCTOR'
Competitors' Relations Officer	CRO labelled shirt
Section Chief Marshal	orange tabard
Safety Marshal	yellow tabard
Yellow Flag Marshal	yellow tabard with blue radio symbol

14. Prizes

14.1 General classification

1. Rally Finland Trophy
2. Cup
3. Cup

14.2 FIA Super 2000 World Rally Championship (for drivers & co-drivers)

1. Cup
2. Cup
3. Cup

14.3 Classification in Classes 1-10

1. Cup
2. Cup
3. Cup

14.4 WRC Academy

1. Cup
2. Cup

3. Cup

14.5 Cups

- * Winning Manufacturer
- * Winner of Group N
- * The best Finnish novice

15. Final Checks and Protests

15.1 Final Checks

The final checks will take place on Saturday 4 August 2012 at 22.00 at the Jyväskylä Vocational Institute (JAO), Viitaniementie 3, Jyväskylä.

Notice to attend the final inspection will be given to the competitors chosen by the Stewards. The cars will be picked up from the parc fermé and taken to the scrutineering by the driver or a team representative duly designated in writing, accompanied by a representative of the organiser. A sufficient amount of mechanics with tools must follow each chosen car, should the scrutineers wish to dismantle the car.

15.2 Protest Fees

Sum of the protest fee set in FIA WRC, Art. 54.2: € 1000

If the protest requires the dismantling and the reassembly of a clearly defined part of the car (engine, transmission, steering, braking system, electrical installation, bodywork, etc.), the claimant must pay an additional deposit of € 1 000.

The expenses incurred by the work and by the transport of the car shall be borne by the claimant if the protest is unfounded, or by the competitor against whom the protest is lodged if the claim is upheld.

If the protest is unfounded, and if the expenses incurred by the protest (scrutineering, transport, etc.) are higher than the deposit amount, the difference shall be borne by the claimant. Conversely, if the expenses are less, the difference shall be returned to them.

15.3 Appeal Fees

Sum for an international appeal fee (FIA): € 12 000

Appendices

Appendix 1

Provisional Itinerary of the Rally - Qualifying and Sections 1-3

Qualifying (P1 & P2)				Wednesday 1 August 2012		
ver.2.0 - 22052012				Sunrise 4:41		Sunset 22:05
TC	Location	SS dist.	Liaison dist.	Total dist.	Target time	First car due
TCFP	Start of Free Practice	-	-	-	-	16:00
FREE PRACTICE CLOSES AT 18:00						
TCSP	Service OUT	-	-	-	-	18:50
TCQS		-	34,10	34,10	0:37	19:27
QS	Qualifying, Ruuhimäki	4,62	-	-	-	19:30
TCPF	Parc Fermé IN (early check-in permitted)	-	31,44	36,06	0:40	20:10
Start order selection at Jyväskylä Paviljonki						21:30

Qualifying

Start (Sections 1,2,3)				Thursday 2 August 2012		
				Sunrise 4:44		Sunset 22:02
TC	Location	SS dist.	Liaison dist.	Total dist.	Target time	First car due
0	Start (Jyväskylä Paviljonki)					13:30
RZ	Refuel - (FIA fuel)		[0,04]			
1	Distance to next refuel	(0,00)	(145,79)	(145,79)		
RZ	Remote Refuel - (FIA fuel)		[145,83]			
2	Distance to next refuel	(15,68)	(138,81)	(154,49)		
0A	Regroup IN (Lahti, Harbour)	-	172,49	172,49	2:30	16:00
0B	Regroup OUT	-	-	-	0:30	16:30
1		-	41,19	41,19	0:50	17:20
SS 1	Koukunmaa	13,68	-	-	-	17:23
2		-	39,67	53,35	1:00	18:23
SS 2	SSS Jokimaa	2,00	-	-	-	19:00
2A	Regroup IN	-	0,78	2,78	0:05	19:05
2B	Regroup OUT	-	-	-	0:02	19:07
RZ	Remote Refuel - (FIA fuel)		[30,51]			
3	Distance to next refuel	(14,22)	(178,46)	(192,68)		
3		-	104,05	104,05	1:40	20:47
SS 3	Mynnilä	14,22	-	-	-	20:50
3A	Parc Fermé & Technical Zone IN	-	104,88	119,10	1:45	22:35
3B	Parc Fermé OUT - Flexi Service IN	-	-	-	-	
Flexi Service A (Jyväskylä, Paviljonki)		(29,90)	(463,06)	(492,96)	0:45	
3C	Flexi Service OUT - Parc Fermé IN	-	-	-	-	
All cars must be returned to Parc Fermé no later than 02:30						
Thursday totals		29,90	463,06	492,96		

Section 1

Section 2

Section 3

All rights reserved. Subject to change.

Appendix 1

Provisional Itinerary of the Rally - Sections 4-6

Re-Start (Sections 4,5,6)					Friday 3 August 2012	
ver.2.0 - 22052012					Sunrise 4:47	Sunset 21:59
TC	Location	SS dist.	Liaison dist.	Total dist.	Target time	First car due
3D	Parc Fermé OUT - Service IN	-	0,00	0,00	-	6:30
	Service B (Jyväskylä, Paviljonki)	(0,00)	(0,00)	(0,00)	0:15	
3E	Service OUT	-	-	-	-	6:45
RZ	Refuel - (FIA fuel)		[0,04]			
4	Distance to next refuel	(35,04)	(138,49)	(173,53)		
4		-	49,05	49,05	0:54	7:39
SS 4	Urria	12,75	-	-	-	7:42
5		-	35,15	47,90	0:54	8:36
SS 5	Jukojärvi	22,29	-	-	-	8:39
5A	Regroup & Technical Zone IN	-	54,29	76,58	1:13	9:52
5B	Regroup & Technical Zone OUT - Service IN	-	-	-	0:13	10:05
	Service C (Jyväskylä, Paviljonki)	(35,04)	(138,49)	(173,53)	0:30	
5C	Service OUT	-	-	-	-	10:35
RZ	Refuel - (FIA fuel)		[0,04]			
5	Distance to next refuel	(25,30)	(84,00)	(109,30)		
6		-	36,16	36,16	0:50	11:25
SS 6	Mökkiperä 1	11,38	-	-	-	11:28
7		-	28,06	39,44	0:43	12:11
SS 7	Palsankylä 1	13,92	-	-	-	12:14
RZ	Remote Refuel - (FIA fuel)		[19,82]			
6	Distance to next refuel	(23,06)	(78,64)	(101,70)		
8		-	57,78	71,70	1:15	13:29
SS 8	Lankamaa 1	23,06	-	-	-	13:32
8A	Regroup & Technical Zone IN	-	40,64	63,70	1:00	14:32
8B	Regroup & Technical Zone OUT - Service IN	-	-	-	0:13	14:45
	Service D (Jyväskylä, Paviljonki)	(48,36)	(162,64)	(211,00)	0:30	
8C	Service OUT	-	-	-	-	15:15
RZ	Refuel - (FIA fuel)		[0,04]			
7	Distance to next refuel	(25,30)	(84,00)	(109,30)		
9		-	36,16	36,16	0:50	16:05
SS 9	Mökkiperä 2	11,38	-	-	-	16:08
10		-	28,06	39,44	0:43	16:51
SS 10	Palsankylä 2	13,92	-	-	-	16:54
RZ	Remote Refuel - (FIA fuel)		[19,82]			
8	Distance to next refuel	(25,12)	(104,68)	(129,80)		
11		-	57,78	71,70	1:15	18:09
SS 11	Lankamaa 2	23,06	-	-	-	18:12
12		-	52,62	75,68	1:18	19:30
SS 12	SSS Killeri	2,06	-	-	-	20:00
12A	Parc Fermé & Technical Zone IN	-	14,06	16,12	0:30	20:30
12B	Parc Fermé OUT - Flexi Service IN	-	-	-	-	
	Flexi Service E (Jyväskylä, Paviljonki)	(50,42)	(188,68)	(239,10)	0:45	
12C	Flexi Service OUT - Parc Fermé IN	-	-	-	-	
All cars must be returned to Parc Fermé no later than						01:00
Friday totals		133,82	489,81	623,63		

Section 4

Section 5

Section 6

All rights reserved. Subject to change.

Appendix 1

Provisional Itinerary of the Rally - Sections 7-10

Re-Start (Sections 7,8,9,10)					Saturday 4 August 2012	
ver.2.0 - 22052012					Sunrise 4:49	Sunset 21:56
TC	Location	SS dist.	Liaison dist.	Total dist.	Target time	First car due
12D	Parc Fermé OUT - Service IN	-	0,00	0,00	-	7:00
	Service F (Jyväskylä, Paviljonki)	(0,00)	(0,00)	(0,00)	0:15	
12E	Service OUT	-	-	-	-	7:15
RZ	Refuel - (FIA fuel)		[0,04]			
9	Distance to next refuel	(36,89)	(91,42)	(128,31)		
13		-	26,91	26,91	0:38	7:53
SS 13	Surkee 1	14,95	-	-	-	7:56
14		-	32,45	47,40	0:55	8:51
SS 14	Leustu 1	21,94	-	-	-	8:54
14A	Regroup & Technical Zone IN	-	32,06	54,00	1:00	9:54
14B	Regroup & Technical Zone OUT - Service IN	-	-	-	0:13	10:07
	Service G (Jyväskylä, Paviljonki)	(36,89)	(91,42)	(128,31)	0:30	
14C	Service OUT	-	-	-	-	10:37
RZ	Refuel - (FIA fuel)		[0,04]			
10	Distance to next refuel	(36,89)	(91,42)	(128,31)		
15		-	26,91	26,91	0:38	11:15
SS 15	Surkee 2	14,95	-	-	-	11:18
16		-	32,45	47,40	0:55	12:13
SS 16	Leustu 2	21,94	-	-	-	12:16
16A	Regroup & Technical Zone IN	-	32,06	54,00	1:00	13:16
16B	Regroup & Technical Zone OUT - Service IN	-	-	-	0:13	13:29
	Service H (Jyväskylä, Paviljonki)	(36,89)	(91,42)	(128,31)	0:30	
16C	Service OUT	-	-	-	-	13:59
RZ	Refuel - (FIA fuel)		[0,04]			
11	Distance to next refuel	(33,01)	(91,13)	(124,14)		
17		-	83,99	83,99	1:35	15:34
SS 17	Ouninpohja 1	33,01	-	-	-	15:37
17A	Regroup IN	-	7,15	40,16	0:50	16:27
17B	Regroup OUT	-	-	-	0:50	17:17
RZ	Remote Refuel - (FIA fuel)		[0,03]			
12	Distance to next refuel	(33,01)	(97,37)	(130,38)		
18		-	22,62	22,62	0:40	17:57
SS 18	Ouninpohja 2 (Power Stage)	33,01	-	-	-	18:00
18A	Technical Zone IN	-	74,78	107,79	2:00	20:00
18B	Technical Zone OUT - Service IN	-	-	-	0:03	20:03
	Service I (Jyväskylä, Paviljonki)	(66,02)	(188,54)	(254,56)	0:10	
18C	Service OUT - Finish - Holding IN	-	-	-	-	20:13
	Podium	-	-	-	-	21:00
Saturday totals		139,80	371,38	511,18		

TOTALS OF THE RALLY				
	SS	Liaison	Total	* %
Thursday 2 August - 3 SS	29,90	463,06	492,96	6,1 %
Sections 1,2,3				
Friday 3 August - 9 SS	133,82	489,81	623,63	21,5 %
Sections 4,5,6				
Saturday 4 August - 6 SS	139,80	371,38	511,18	27,3 %
Sections 7,8,9,10				
Total - 18 SS	303,52	1324,25	1627,77	18,6 %

* % = the percentage of the total distance of special stages.

Section 7

Section 8

Section 9

Section 10

All rights reserved. Subject to change.

Appendix 1A

Provisional Itinerary of the Rally - WRC Academy

Re-Start (Sections 7,8,9)				Saturday 4 August 2012		
ver.2.0 - 22052012				Sunrise 4:49		Sunset 21:56
TC	Location	SS dist.	Liaison dist.	Total dist.	Target time	First car due
17A	Technical Zone IN	-	74,78	107,79	2:00	18:40
17B	Technical Zone OUT - Service IN	-	-	-	0:03	18:43
	Service I (Jyväskylä, Paviljonki)	(33,01)	(158,77)	(191,78)	0:10	
17C	Service OUT - Finish - Holding IN	-	-	-	-	18:53
	<i>Podium</i>	-	-	-	-	19:30
Saturday totals		106,79	341,61	448,40		

TOTALS OF THE RALLY				
	SS	Liaison	Total	* %
Thursday 2 August - 3 SS Sections 1,2,3	29,90	463,06	492,96	6,1 %
Friday 3 August - 9 SS Sections 4,5,6	133,82	489,81	623,63	21,5 %
Saturday 4 August - 5 SS Sections 7,8,9	106,79	341,61	448,40	23,8 %
Total - 17 SS	270,51	1294,48	1564,99	17,3 %

* % = the percentage of the total distance of special stages.

The above only gives the modifications to the Itinerary of the rally from the start of SS 17 onwards. Also see SR, art. 12.10.3.

Appendix 2

Reconnaissance timetable

Reconnaissance Day 1 Monday 30 Jul 2012

Group A Priority Drivers	Allowed Time	SS km	Total SS km (x2)	Finish 1 / Start 2	To Next SS	Total km
Service Park, Paviljonki					43,00 SS 4	43,00
SS 4 Urria	8:00 - 9:30	12,75	25,50	28,70 SS 4	35,15 SS 5	89,35
SS 5 Jukojärvi	9:15 - 11:15	22,29	44,58	29,70 SS 5	38,50 SS 6/9	112,78
SS 6/9 Mökkiperä	11:00 - 13:30	11,38	22,76	17,50 SS 6/9	28,06 SS 7/10	68,32
SS 7/10 Palsankylä	12:00 - 15:00	13,92	27,84	14,50 SS 7/10	57,78 SS 8/11	100,12
SS 8/11 Lankamaa	13:45 - 16:45	23,06	46,12	8,80 SS 8/11	40,64 SP	95,56
Total						509,13

Group B Others	Allowed Time	SS km	Total SS km (x2)	Finish 1 / Start 2	To Next SS	Total km
Service Park, Paviljonki					43,00 SS 4	43,00
SS 4 Urria	11:00 - 12:30	12,75	25,50	28,70 SS 4	35,15 SS 5	89,35
SS 5 Jukojärvi	12:30 - 14:30	22,29	44,58	29,70 SS 5	38,50 SS 6/9	112,78
SS 6/9 Mökkiperä	14:30 - 17:00	11,38	22,76	17,50 SS 6/9	28,06 SS 7/10	68,32
SS 7/10 Palsankylä	15:30 - 18:30	13,92	27,84	14,50 SS 7/10	57,78 SS 8/11	100,12
SS 8/11 Lankamaa	16:45 - 20:00	23,06	46,12	8,80 SS 8/11	40,64 SP	95,56
Total						509,13

Reconnaissance Day 2 Tuesday 31 Jul 2012

Group A Priority Drivers	Allowed Time	SS km	Total SS km (x2)	Finish 1 / Start 2	To Next SS	Total km
Service Park, Paviljonki					83,99 SS 17/18	83,99
SS 17/18 Ouninpohja	7:00 - 8:30	33,01	66,02	25,40 SS 17/18	131,20 SS 1	222,62
SS 1 Koukunmaa	10:15 - 12:15	13,68	27,36	21,60 SS 1	39,67 SSS 2	88,63
SSS 2 Jokimaa	11:30 - 13:30	2,00	4,00	0,00 SSS 2	104,05 SS 3	108,05
SS 3 Mynnilä	13:30 - 16:00	14,22	28,44	6,20 SS 3	92,70 QS	127,34
QS Ruuhimäki	15:15 - 18:00	4,62	9,24	10,00 QS	31,44 SP	50,68
Total						681,31

Group B Others	Allowed Time	SS km	Total SS km (x2)	Finish 1 / Start 2	To Next SS	Total km
Service Park, Paviljonki					83,99 SS 17/18	83,99
SS 17/18 Ouninpohja	8:30 - 10:00	33,01	66,02	25,40 SS 17/18	131,20 SS 1	222,62
SS 1 Koukunmaa	12:15 - 14:15	13,68	27,36	21,60 SS 1	39,67 SSS 2	88,63
SSS 2 Jokimaa	13:30 - 16:30	2,00	4,00	0,00 SSS 2	104,05 SS 3	108,05
SS 3 Mynnilä	16:00 - 19:00	14,22	28,44	6,20 SS 3	104,88 SP	139,52
Total						642,81

Reconnaissance Day 3 Wednesday 1 Aug 2012

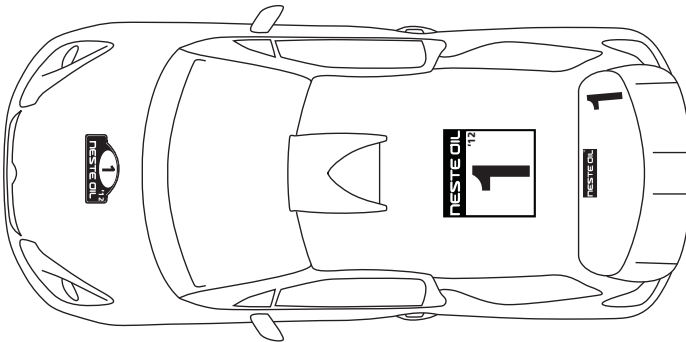
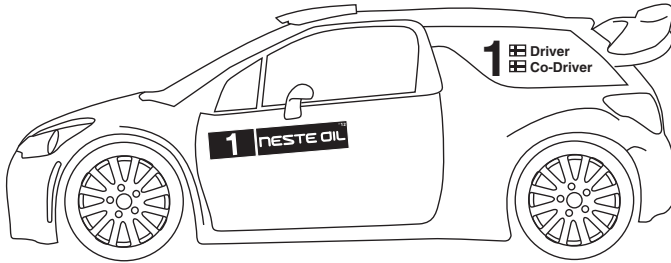
Group A Priority Drivers	Allowed Time	SS km	Total SS km (x2)	Finish 1 / Start 2	To Next SS	Total km
Service Park, Paviljonki					26,91 SS 13/15	26,91
SS 13/15 Surkee	7:30 - 9:00	14,95	29,90	30,70 SS 13/15	32,45 SS 14/16	93,05
SS 14/16 Leustu	8:45 - 10:45	21,94	43,88	21,50 SS 14/16	36,50 SSS 12	101,88
SSS 12 Killeri	10:30 - 13:00	2,06	4,12	0,00 SSS 12	14,06 SP	18,18
Total						240,02

Group B Others	Allowed Time	SS km	Total SS km (x2)	Finish 1 / Start 2	To Next SS	Total km
Service Park, Paviljonki					10,60 SSS 12	10,60
SSS 12 Killeri	8:30 - 10:00	2,06	4,12	0,00 SSS 12	23,80 SS 13/15	27,92
SS 13/15 Surkee	9:00 - 11:00	14,95	29,90	30,70 SS 13/15	32,45 SS 14/16	93,05
SS 14/16 Leustu	10:45 - 13:15	21,94	43,88	21,50 SS 14/16	32,06 SP	97,44
Total						229,01

ver. 22052012

Appendix 3 (FIA WRC, Art. 18-19)

Identification Numbers and Advertising



Obligatory:

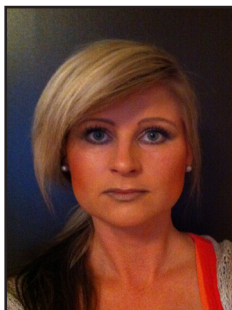
1. Competition number, 1 / car 50 x 52 cm (NESTE OIL)
- one rectangular panel placed on the roof with the top towards to front of the car
2. Competition number, 2 / car 67 x 17 cm (NESTE OIL)
- two rectangular panels placed on both front doors of the car (7 to 10 cm of the bottom line of the side window) with the number to the front of the car
3. Competition number, 2 / car 20 cm high
- two competition numbers for both rear side windows
4. Rally Plate, 1 / car 43 x 21.5 cm (NESTE OIL)
- one plate placed on the bonnet of the car



5. Competition number, 1 / car 14 cm high
- one competition number for the rear window, to be placed next to the rear sticker, on the right hand side (as seen from the rear of the car)
6. Rear sticker, 1 / car 30 x 10 cm (NESTE OIL)
- one rectangular panel for the rear window, to be placed up at the centre of the rear window
7. Driver and Co-driver name stickers, 2 / car 6 cm high, stroke width 1 cm
- two stickers of the driver's and co-driver's names with national flag on the rear side window of both sides of the car under the competition number
- the driver's name must be the upper one on both sides of the car

Appendix 4

Competitors' Relations Officers



Ms. Katja Niemelä
Tel. +358 44 312 4411



Ms. Tiina Nuutinen
Tel. +358 50 5881 038

Competitors' Relations Officers Schedule

Wednesday 1 August

13.00 - 18.00	Scrutineering	A-katsastus, Jyväskylä
18.50	Service Out for Qualifying Stage	Paviljonki
21.30	Start order selection	Paviljonki

Thursday 2 August

07.00 - 12.30	Scrutineering	A-katsastus, Jyväskylä
13.30	Start of the Rally	Paviljonki
23.20	Parc Fermé + Service Park	Paviljonki

Friday 3 August

06.30	Start Section 4	Paviljonki
21.15	Parc Fermé + Service Park	Paviljonki

Saturday 4 August

07.00	Start Section 7	Paviljonki
20.13	TC 18A + Finish / Podium	Paviljonki
22.00	Final checks	Jyväskylä Vocational Institute

All Media/Technical Zones throughout the itinerary.

Title Sponsor

NESTE OIL

Official Partners



Official Suppliers

LAHTI



KARJALA

Newtop



SOKOS HOTELS

DEWALT

Opteltat®

KALUSTEVUOKRAUS.FI



More than a rally.

Media Partners



Tuulilasi

Event Suppliers



SONY



wrc.com

www.nesteoilrallyfinland.fi