

## Rally Guide

INTRODUCTION .....	2
WELCOME .....	2
CONTACT DETAILS .....	3
FORMER WINNERS OF SIBIU RALLY.....	7
STANDINGS 2013.....	7
PROGRAMME AND CRITICAL DEADLINES.....	8
ENTRY DETAILS .....	11
THE CITY OF SIBIU .....	17
SERVICE PARK .....	20
TYRES.....	25
FUEL .....	26
FREE PRACTICE & QUALIFYING STAGE.....	27
SHAKEDOWN .....	28
RECONNAISSANCE SCHEDULE .....	29
ACCOMMODATION.....	31
RESTAURANTS.....	32
TRAVELLING TO SIBIU – ROMANIA / USEFUL FACTS.....	33
SIBIU USEFUL SERVICES .....	35
USEFUL MAPS .....	37
PARKING AROUND SIBIU.....	41
EVENTS DISTANCES.....	42
OTHER DISTANCES.....	42
SS1, 3 DOBARCA .....	43
SS2, 4 CRINTI.....	45
SSS PARALLEL .....	47
SS6 PALTINIS NIGHT .....	49
SS7 SANTA NIGHT .....	51
SS8, 11 SADU (asphalt) .....	53
SS9, 12 GATUL BERBECULUI .....	53
SS10, 13 SANTA MAX .....	55
APPENDIX 1 – OVERVIEW MAP .....	56
APPENDIX 2 – ITINERARY .....	57

---

## INTRODUCTION

---

Sibiu Rally Romania 2013 is a new entry in the European Rally Championship calendar. In this Rally Guide you will find useful information for your first look at this event. The Rally Guide may be updated so please check our website for regular changes. The event website can be found at: <http://www.raliulsibiului.ro>  
The organising team looks forward to welcoming you to Sibiu and Romania.

THIS RALLY GUIDE IS FOR INFORMATION ONLY, AND CARRIES NO REGULATORY POWER

---

## WELCOME

---

It is a great honour for us to be able to welcome you for the first time at the Sibiu Rally Romania, a round of the FIA European Rally Championship (ERC). The toughest gravel stages from Romania are located near Sibiu, the European Capital of Culture in 2007. It is a great honour for us to invite you to discover the beauties of Romania and Sibiu during a spectacular event.

We made huge efforts to prepare everything at the highest level for one of the most important sporting events hosted by Romania in 2013 and we wish good luck to all the teams, an event without incidents and full-enjoy competition days for the fans on all the Sibiu Rally Romania stages.

I can't forget all the support that Institutions and Sponsors have given to this event, because without them, achieving our goals would have been impossible for us.

Thank you all for all your help and welcome to all our guests.

Sorin Itu – Chairman

---

## CONTACT DETAILS

---

### ORGANISER'S NAME

ACS SCORPION RALLY TEAM

### Address and contact details – Permanent Office

AS SCORPION RALLY TEAM

Romania, 550362, Sibiu, Luptei Street, no. 25A

Tel.: +4 0269 427 800

Fax: +4 0269 427 800

E-mail: sorin.itu@raliulsibiului.ro

berti.panaiot@raliulsibiului.ro

Web Site: www.raliulsibiului.ro

### ORGANISATION COMMITTEE

Klaus Werner Iohannis – Sibiu Mayor

Ioan Cindrea – Sibiu County Council Chairman

Ovidiu-Ioan Sitterli – Sibiu County Prefect

Sorin Itu – Chairman – sorin.itu@raliulsibiului.ro

Albert Panaiot – PR Manager – berti.panaiot@raliulsibiului.ro

Alexandru Stancu – alex.stancu@raliulsibiului.ro

### STEWARDS OF THE MEETING

Chris Mehmel (DEU) - Chairman of stewards

J. Anagnostopoulos (GRE) – FIA Steward

TBA – National Steward

### STEWARDS OF THE MEETING (Dunlop National Rally Championship)

TBA (ROU) – FRAS Chairman of stewards

TBA (ROU) – FRAS Steward

TBA (ROU) – FRAS Steward

### OBSERVERS & DELEGATES

#### **FIA Observer**

Andrew Kellit (GBR)

#### **FRAS Observer**

TBA (ROU)

#### **Tehcnical Delegates**

Heinz Goldstein (DEU)

#### **ASN Delegate**

TBA (ROU)

#### **ASN Observer**

TBA (ROU)

### **MEDIA CENTER LOCATION:**

Sibiu City Hall, Piața Mare  
Romania, 550178, Sibiu  
S Brukenthal Street, no. 2

### **PARK FERMÉ LOCATION:**

Sibiu, Piața Mică

### **OFFICIAL PANEL LOCATION:**

**Up to Sunday, July 21 – 20:00**

#### **Location:**

AS SCORPION RALLY TEAM  
Romania, 550362, Sibiu, Luptei Street, no. 25A

**From Monday, July 22 – 12:00**

#### **Location:**

Romania, Sibiu, Piata Mica

### **HEADQUARTERS**

**Up to Sunday, July 21 – 20:00**

#### **Location:**

AS SCORPION RALLY TEAM  
Romania, 550362, Sibiu, Luptei Street, no. 25A

#### **Contacts:**

Tel.: +4 0269 427 800  
Fax: +4 0269 427 800  
E-mail: sorin.itu@raliulsibiului.ro  
berti.panaiot@raliulsibiului.ro  
Web Site: www.raliulsibiului.ro

**From Monday, July 22 – 12:00**

#### **Location:**

Romania, Sibiu, Piata Mica

#### **Contacts:**

Mobile: +4 0748 0738 12  
E-mail: alex.stancu@raliulsibiului.ro  
Web Site: www.raliulsibiului.ro

### **Opening and closing schedule**

22	July	Monday	12:00 / 22:00
23	July	Tuesday	08:00 / 18:00
24	July	Wednesday	08:00 / 18:00
25	July	Thursday	08:00 / 22:00

26	July	Friday	08:00 / 02:00
27	July	Saturday	08:00 / 22:00

## **OFFICIALS**

### **Sporting Director**

TBA

### **Sporting Deputy Director**

TBA

### **Secretary of the Rally/ Chief Timekeeping Officer**

Rares Florescu – 0748 769 036 – raresf@gmail.com

### **Chief Secretary Officer**

TBA

### **Validation Secretaries**

TBA

TBA

TBA

### **Competitors Relations Officer**

Jean François Fauchille (FRA)

### **FRAS Competitors Relations Officer**

TBA

### **Chief Timekeeper**

TBA

### **Marshal Observer**

TBA

### **Route Chief**

Badiu Ioan – +4 0722 135 527 – utu.badiu@raliulsibiului.ro

### **Route Security Chief**

TBA

### **Route Security Deputy Chief**

TBA



### **Route Opening Chief**

TBA

### **Media Relations**

Berti Panaiot – +4 0748 776 237 – berti.panaiot@raliulsibiului.ro

### **Computer Systems & Webmaster Chief**

(Network și programare, webmaster și Design)

Alexandru Stancu – +4 0748 073 812 – alex.stancu@raliulsibiului.ro

### **Chief Medic of the Competition**

Dr. Cotizo Draia – 0754 060 802

### **Medical Officer of the Competition**

Dr. Ovidiu Luca – 0732 950 299

### **Rescue Officer of the Competition**

Mr. Adrian David – 0745 140 144

### **Special Events Cheifs**

SS 1, 3, 8, 11 TBA

SS 2, 4, 9, 12 TBA

SS 5, 14 TBA

SS 6, TBA

SS 7, 10, 13 TBA

### **Results processing**

Rares Florescu – 0748 769 036 – raresf@gmail.com

### **Timekeeping Equipment**

ONEST TIMING SRL

Marian Dragomir +4 0744 654 322

---

## FORMER WINNERS OF SIBIU RALLY

---

### YEAR / PILOT / CO-PILOT / CAR

2001 / Mihai Leu (ROU) / Ciprian Solomon (ROU) / Ford Escort RS Cosworth  
2002 / Constantin Aur (ROU) / Silviu Moraru (ROU) / Seat Cordoba WRC  
2003 / Constantin Aur (ROU) / Adrian Berghea (ROU) / Mitsubishi Lancer  
2004 / Bogdan Marisca (ROU) / Sebastian Itu (ROU) / Mitsubishi Lancer Evo VI  
2005 / Constantin Aur (ROU) / Adrian Berghea (ROU) / Mitsubishi Lancer  
2006 / Constantin Aur (ROU) / Adrian Berghea (ROU) / Mitsubishi Lancer Evo IX  
2007 / Bogdan Marisca (ROU) / Sebastian Itu (ROU) / Mitsubishi Lancer Evo IX  
2008 / Jarkko Miettinen (FIN) / Mikko Lukka (FIN) / Mitsubishi Lancer Evo IX  
2009 / Jarkko Miettinen (FIN) / Mikko Lukka (FIN) / Mitsubishi Lancer Evo IX  
2010 / Gergo Szabo (HUN) / Levente Csegzy (HUN) / Mitsubishi Lancer Evo IX  
2011 / Marco Tempestini (ITA) / Dorin Pulpea (ROU) / Peugeot 207 S2000  
2012 / Andreas Mikkelsen (NOR) / Ola Floene (NOR) / Skoda Fabia S2000 Rally

---

## STANDINGS 2013

---

### NATIONAL RALLY CHAMPIONSHIP (05.06.2013)

#### Pilot / Car / Total

1. Francois Delecour (FRA) / Peugeot 207 S2000 / 55.0
2. Gergo Szabo (HUN) / Mitsubishi Lancer Evo X / 46.0
3. Bogdan Marisca (ROU) / Mitsubishi Lancer Evo IX / 32.4
4. Edwin Keleti (ROU) / Mitsubishi Lancer Evo X / 30.4
5. Valentin Porcisteanu (ROU) / Mitsubishi Lancer Evo X / 24.6

### FIA EUROPEAN RALLY CHAMPIONSHIP (05.06.2013)

#### Pilot / Car / Total

1. Jan KOPECKY (CZE) / 146
2. Craig BREEN (IRL) / 109
3. Bryan BOUFFIER (FRA) / 69
4. Francois DELECOUR (FRA) / 48
5. Jari KETOMAA (FIN) / 39

## PROGRAMME AND CRITICAL DEADLINES

### Monday, JUNE-10-2013

20:00	Issuing of Rally Guide	website
-------	------------------------	---------

### Monday, JUNE-17-2013

	Opening Date for Entries	Rally HQ
--	--------------------------	----------

### Wednesday, JULY-10-2013

20:00	Closure Date for Entries	Rally HQ
-------	--------------------------	----------

### Saturday, JULY-13-2013

18:00	Closure Date for Co-driver details	Rally HQ
22:00	Publication of Entry List	Rally HQ

### Tuesday, JULY-16-2013

20:00	Closing date for Service Car Registration	Rally HQ
20:00	Closing date for order of extra services in service park	Rally HQ
20:00	Closing Date to Order for Extra Material	Rally HQ
20:00	Issuing of Rally Guide 2	website

## DURING RALLY WEEK

### Monday, JULY-22-2013

	Private Testing on request	
13:00/21:00	Opening of the service park – FIA, ERC and National Seeded Drivers	Piața Mare
12:00/22:00	Opening of Rally Headquarters	Rally HQ
12:00/22:00	Start of Collection of Material and Documents (Issuing of Road-Book)	Rally HQ

### Tuesday, JULY-23-2013

	Private Testing on request	
08:00/09:00	Mounting of GPS / Tracking system - Reconnaissance	Rally HQ Piata Mica
08:00/18:00	Opening of Rally Headquarters	Rally HQ
09:00/21:00	Opening of the service park – FIA, ERC and National Seeded Drivers	Piața Mare
09:00 / 18:00	Reconnaissance	According to Schedule



19:00	Visit by Tram the Astra Museum (Village Museum)	Astra Museum
14:00/20:00	Opening of Media Centre and Accreditation	Rally HQ

### Wednesday, JULY-24-2013

08:00/18:00	Opening of Rally Headquarters	Rally HQ
08:00/09:00	Mounting of GPS / Tracking system - Reconnaissance	Rally HQ Piata Mica
09:00/18:00	Reconnaissance	According to Schedule
09:00/20:00	Opening of the Service-Park – All other Drivers	Piața Mare
14:00/20:00	Opening of Media Centre and Accreditation	Rally HQ
16:00	Closing date for Reconnaissance Registration	Rally HQ
17:00/21:00	Sealing & Marking – Spare Parts Optional Schedule - FIA, ERC and National Seeded Drivers & All other Drivers <i>To be requested when Collection of Material and Documentation by each competitor</i>	Each Competitor area Service Park
18:00	Closing date for Shake Down Registration	Rally HQ
*	Administrative Checks	Rally HQ
19:00/21:30	- FIA, ERC and National Seeded Drivers	Rally HQ
**	Scrutineering, sealing & marking	Piața Mică
19:15/21:45	- FIA, ERC and National Seeded Drivers Mounting of GPS Rally Safety system	
22:00/23:30	Reconnaissance SS 7 PĂLTINIȘ NIGHT	According to Schedule
22:00/23:30	Reconnaissance SS 8 ȘANTA NIGHT	According to Schedule

\* A detailed timetable will be published.

\*\* Order and deadline presentation time will be presented to each competitor during the Administrative Checking.

### Thursday, JULY-25-2013

08:00/22:00	Opening of Rally Headquarters	Rally HQ
08:00/22:00	Opening of Media Centre and Accreditation	Rally HQ
08:00/18:00	Collection of GPS Rally Safety system from recce cars	TBA
*	Administrative Checks	Rally HQ
08:00/10:30	– All other Drivers	

** 08:15/10:45	Scrutineering, sealing & marking – All other Drivers Collection from recce cars and mounting of GPS Rally Safety system	Piața Mică
08:00/09:30	Free Practice – FIA, ERC and National Seeded Drivers	Rallycross track
10:00/11:00	Qualifying Stage – FIA, ERC and National Seeded Drivers	Rallycross track
11:00/14:00	Shakedown – all other Drivers	Gușterița
11:00/14:00	Shakedown – all other Drivers	Daia
12:00	Selection of Start Positions – FIA, ERC and National Seeded Drivers	Media Centre
12:15	FIA, ERC and FRAS Pre-event Press Conference	Media Center
16:00/17:00	Football Game Drivers Team vs Celebrity Team	Sala Transilvania
16:30	Helicopters pilot's briefing	Rally HQ
17:30	Safety cars crew's briefing	Rally HQ
18:00	First Stewards' meeting	Rally HQ
19:15	Publication of Start List for City demo, Ceremonial Start, and LEG 1	Rally HQ
19:30	Preparing for Start in City Demo	Service Park
***20:00	City demo	Sibiu Center
****20:30	Ceremonial Start Sibiu Rally	Podium Piața Mică
22:00	Black Tie Charity Gala	Hilton Hotel

\* A detailed timetable will be published.

\*\* Order and deadline presentation time will be presented to each competitor during the Administrative Checking.

\*\*\* See appendix for the City demo.

\*\*\*\* See appendix for the Ceremonial Start Sibiu Rally.

### Friday, JULY-26-2013

08:00/02:00	Opening of Rally Headquarters	Rally HQ
08:00/02:00	Opening of Media Centre and Accreditation	Rally HQ
10:30 / 11:00	Autograph session	Piața Mare
13:00	RALLY START Start for LEG 1	Piața Mare
22:59	Finish of LEG 1	Parc Fermé
01:30	Second Stewards' meeting	

01:45	Publication of Partial Unofficial Classification LEG 1	Rally HQ
02:00	Publication of Start List for LEG 2	Rally HQ

### Saturday, JULY-27-2013

08:00/22:00	Opening of Rally Headquarters	Rally HQ
08:00/22:00	Opening of Media Centre and Accreditation	Rally HQ
09:30	Start for LEG 2	Parc Fermé
18:24	Finish of the Rally	Podium Piața Mică
19:00	Giving	Podium Ceremony Piața Mică
20:00	FIA, ERC and FRAS event Press Conference	Media Center
20:30	Final Scrutineering	TBA
21:30	Publication of Provisional Final Classification	Rally HQ
22:00	Publication of Final Official Classification	Rally HQ

## ENTRY DETAILS

### CLOSING DATE FOR ENTRIES

Wednesday, JULY-10-2013

### ENTRY PROCEDURE

Entry form must be sent by post, fax, and e-mail: [entry@raliulsibiului.ro](mailto:entry@raliulsibiului.ro) or directly at Rally Headquarters.

If this application is sent by fax or e-mail, the original Entry Form must reach the Organiser within 7 days of the entries' deadline.

Details concerning the co-driver can be sent in up to Saturday, July 13th – 18:00 hrs.

The entry form will only be accepted by Organising Committee if accompanied by Swift Bank Transfer Receipt.

### NUMBER OF ENTRANTS ACCEPTED: 70

The organiser's selection will be the following:

1. FIA seeded drivers
2. ERC drivers
3. Official Team or Manufacturers entered drivers
4. National Seeded Drivers
5. Classified drivers in the Dunlop National Rally Championship (at the time)

6. Drivers entered in the Dunlop National Rally Championship
7. Foreign drivers – EU and others
8. Romanian resident drivers
9. Remaining drivers, according to the driver performance and capacity / condition of the vehicle, at the Organisation Committee's exclusive criteria.

### 2.1.1. Classes

Classes	Groups
2	S2000-Rally: 1.6 T engine with a 30mm restrictor S2000-Rally: 2.0 Atmospheric Group R4 Group R5
3	Group N car over 2000cc (current N4)
4	RGT Cars
5	Group A car over 1600cc and up to 2000cc Super 1600 R2C (over 1600cc and up to 2000cc) R3C (over 1600cc and up to 2000cc) R3T (up to 1600cc / nominal) R3D (up to 2000cc / nominal)
6	Group A car over 1400cc and up to 1600cc R2B (over 1400cc and up to 1600cc) Kit-car over 1400cc and up to 1600cc
7	Group A car up to 1400cc Kit-car up to 1400cc
8	Group N car over 1600cc and up to 2000cc
9	Group N car over 1400cc and up to 1600cc R1B (over 1400cc and up to 1600cc)
10	Group N car up to 1400cc R1A (up to 1400cc)

- Cars homologated as Kit cars, where the capacity is between 1400 and 1600 cc, may be accepted if they also comply with Article 255-6.2 "Weight" of Appendix J.
- Two-wheel drive cars equipped with a supercharged diesel engine with a nominal cylinder capacity of less than 2000 cm<sup>3</sup> are accepted in Groups A and N.
- For S1600 homologated cars, it will be possible to use lapsed errata without any penalty.
- An FIA technical passport is mandatory for S2000, R5, Super 1600 and RGT cars.



## 2.1.2. Dunlop National Rally Championship Classes

For the Dunlop National Rally Championship FRAS the following classes will be added:

Classes	Groups
11	Grupa H car – over 2000 cc
12	Grupa H car – over 1600 cc and up to 2000 cc
13	Grupa H car – over 1400 cc and up to 1600 cc
14	Grupa H car – up to 1400 cc

- For Group R cars, the changes in the homologation sheet must be respected towards Group N. (it is not accepted for just a part of the changes and the rest to remain according to Group N). Any Group N car that uses at least one VR4 extension will be assigned in Group R, therefore it must respect the conditions from Art.4.4.

**Notes:** 1. The cars that ran out of homologation (expired homologation) but remain in compliance with homologation document and are in compliance with actual security norms, may be assimilated into Dunlop National Rally Championship at the class the cars were assimilated, on the basis of a request addressed to the Technical Commission of FRAS (Romanian Automobile Sport Federation). The Technical Commission will accept/refuse the request, after consulting National Rally Commission. Technical Commission of FRAS may extend the homologation on national plan for all the cars FIA homologated at group N and A, except their derivatives like A8, WRC, Kit Car, etc. where the accept of National Rally Commission is mandatory. Once the assimilation/extend of the homologation is accepted on national plan, it could not be withdrawn during the season.

2. **Group H** – the cars with expired homologation or without FIA homologation. The cars in this group with turbocharged engines and equivalent cylindrical capacity that exceeds 2000cc, will be equipped with a **34** mm air restrictor.

## ENTRY FEES

The entry fees must be paid between June-17-2013 and July-10-2013

With the optional advertising proposed by the Organisers

<b>Pack A National Rally Championship*</b> <b>FRAS Licence required</b>	<b>800,00 €</b>
<b>Pack B / Private</b> <b>ASN/FIA Licence required</b>	<b>1000,00 €</b>
<b>Pack C / ERC Manufacturer</b> <b>ASN/FIA Licence required</b>	<b>1800,00 €</b>



## \* National Rally Championship Rally Fees

### Entry Fee/Crew:

- **800,00 €** for crew with car in classes 2-14 except juniors (drivers under 25 years old);
- **400,00 €** drivers under 25 years old, single brand cup and 2 wheel drive car in classes 11-14.

### Entry Fee/Team:

- **400,00 €** for team consisting of two crews;
- **500,00 €** for team consisting of three crews;
- **600,00 €** for team consisting of four crews.

**\*\* FIA license required for the romanian drivers and co-drivers that want to participate in the ERC Championship.**

Without the optional advertising proposed by the Organisers

<b>Pack A National Rally Championship*</b> <b>FRAS Licence required</b>	<b>1600,00 €</b>
<b>Pack B / Private</b> <b>ASN/FIA Licence required</b>	<b>2000,00 €</b>
<b>Pack C / ERC Manufacturer</b> <b>ASN/FIA Licence required</b>	<b>3600,00 €</b>

## \* National Rally Championship Rally Fees

### Entry Fee/Crew:

- **1600,00 €** for crew with car in classes 2-14 except juniors (drivers under 25 years old);
- **800,00 €** drivers under 25 years old, single brand cup and 2 wheel drive car in classes 11-14.

## SAFETY TRACKING SYSTEM EQUIPMENT – CAUTION FEE

A caution fee of € 150,00 / 600 lei will be collected from Rally HQ at Collection of Material and Documents from all competitors over the Tracking System/GPS, refundable at the end of the rally, after the good receipt of the equipment.

The following table describes the contents of the various entry packages:

ITEMS		Pack C / ERC	Pack B / Private	Pack A National Championship
	<b>Documentation</b>			
Supplementary Regulations		website		
Insurance Policy		1	1	-
Roadbook Sets		3	1	1
Rally Guide		website		
Maps		3	1	-
Programme		website		
	<b>Vehicle Plates</b>			
“Service” Service Park access in the designated area		1	1	1
“Auxiliary” Service Park access in the designated area		2	1	-
“Guest” Parking zone in Piața Huet (near HQ)		2	-	-
<b>Individual Passes</b>				
“Driver”		2	2	2
“Team Manager”		1	1	-
“Service”		4	2	-
“Vip Guest” (includes: transport by bus for special stages, reserved place for 3 days (Thu, Fri, Sat) at the restaurant LA TURN in Piața Mică) See appendix GUEST.		3	-	-
<b>Other</b>				
Service Park available space		130 square meters for 1 car; 170 square meters for 2 cars; ERC Manufacturer 200 square meters.	50 sqm.	40 sqm

Water & electricity	YES	YES	-
Waste oil and garbage collection	YES	YES	YES
Wifi Orange	YES	YES	-
Shakedown	YES	YES	-

## Taxes for Additional Plates and Individual Passes

### Additional Vehicle Plates

“Service” = 100,00 €

“Auxiliary” = 100,00 €

“Guest” = 80,00 €

### Additional Individual Passes

“Service” = 20,00 €

“Team Manager” = 50 €

“Vip Guest” = 150,00 €

### Additional Rally Documents

“Roadbook” = 80,00 €

## PAYMENT DETAILS

### Swift Bank Transfer Only

<b>Bank</b>	<b>Raiffeisen Bank S.A. Agent.</b>
<b>Bank Address</b>	<b>Sibiu</b>
<b>Account Name</b>	<b>Sibiu, Piața Aurel Vlaicu, Sc. B</b>
<b>Account Number</b>	<b>Asociația Clubul Sportiv Scorpion Rally Team</b>
<b>IBAN</b>	<b>0000 0600 0774 6929</b>
<b>BIC / SWIFT:</b>	<b>RO69 RZBR 0000 0600 0774 6929</b>
	<b>RZBRROBU</b>

## REFUNDS

Entry fees will be refunded in full if the rally doesn't take place or to candidates whose entry has not been accepted.

The organiser may refund 50% of the entry fee to those competitors who for reasons „force majeure” (duly certified by their ASN), were unable to start in the rally.

With the request of entry fee refund the competitor must send the organiser a certificate of „force majeure” given by his own ASN.

---

## THE CITY OF SIBIU

---

The city of Sibiu is one of the most important cities in Transylvania with a remarkable economic development potential, being also advantaged by its positioning on a traffic knot on the fourth Pan European Corridor and enjoying the benefits of an International Airport.

The city is situated at 45°47' Nordic latitude and 24°05' eastern longitude. The altitude compared to the level of the sea varies between 415 meters in the Lower Town and 431 meters in the Upper Town. The city is situated in the temperate continental area, with temperature influences from the nearby mountains. The climate is thus temperate continental with no excesses. The annual average of precipitations is of 662 mm with the lowest values in the month of February (26.7 mm) and the maximum values in June (113 mm).

The average annual temperature is of 8.9 Celsius degrees.

### **The average temperature in 25th-27th of July:**

Maximum average temp. (by day): 25,7 Celsius degrees

Maximum average temp. (by night): 13,1 Celsius degrees

With 155000 permanent inhabitants and 25000 temporary inhabitants, mainly students, Sibiu is the largest city in the county and one of the most important ones in Transylvania.

The local community includes various ethnic groups. The great majority of the population is represented by Romanians (94%) who coexist with Germans, descendants of the Saxon colonists who emigrated in the 17th century from the region where Luxemburg is situated today. Hungarians, Roma and a very small Jewish community also coexist here, all of them contributing to the city life with their specific cultural influences.

The same diversity also characterizes the religious life. Together with the Orthodox community, Reformed, Roman-Catholics and Greek Catholics live and practice their faith in Sibiu.

The social structure of the city is based on the historical existence and multicultural life experience, the diversity of its inhabitants belonging to various ethnic groups, generations and life styles rendering the city a special aura.









## SERVICE PARK

### Location

Sibiu, Piața Mare

### Opening of Service Park

#### Access schedule for Service Vehicles

Monday	JULY-22	13:00 - 21:00	FIA, ERC and National Seeded Drivers
Tuesday	JULY-23	09:00 - 21:00	FIA, ERC and National Seeded Drivers
Wednesday	JULY-24	09:00 - 20:00	All other drivers

### Deadline for the access of the Service Vehicles

Until 30 minutes before the due time for the first competitor to enter and after the exit of the last competitor.

### Vehicles Allowed in Service Parks

Only one service vehicle per competing car starting the rally is allowed inside the Service Park throughout the rally.

These vehicles must be clearly identified by means of "Service" plate issued by the Organisers and affixed on the front windscreen. Other team vehicles, identified by means of "Auxiliary" plates, issued by the Organisers, will be permitted to park in the vicinity, where and if space is available.

All Unloading should take place in the designated trailer park zone see Rally Guide.

No trailers should be taken to the Service Park.

Service vehicles are permitted to enter service only once a day.

### Service Park Rules

#### Cleanliness and safety of your stand

**Each competitor is responsible for the behavior of its service team members.** In the service park, all competitors must:

- **In the Service Park is prohibited fixing tents or other objects with nails or other materials that lead to the deterioration of the cubic stone in Piata Mare.** Failure to comply will result in a cash penalty of € 500,00.



- keep near to any racing car **a fire extinguisher for A, B, and C type fires of a minimul capacity of 5 kg**, having been checked within the last 2 years.
- place under each racing car **a waterproof and resistant to hydrocarbons ground sheet** of a surface equal to that of the car ( 3 x 5 m minimum).
- **take care of his waste removal** when his team leaves the parks at the latest; failure to comply will result in a cash penalty of € 500,00

**The penalty for the extinguisher or ground sheet failure in the parks is € 200,00**  
**Oil, waste water emptying, car wash and staking out on the ground are forbidden in the Service Parks.**

**Oil is collected by a specialized company.**

**Speed Limit in the Service Park is 5 km/h. Failure to comply with this limit shall result in a penalty applied by the Stewards.**

#### **Other service park information**

The park will be guarded non-stop.

The trailer parking area will be next to the local theatre (Coposu Boulevard) for all participants.

The distance from the theatre parking area to the service park is accessible by foot (maximum 10 mins).

Parking for the participants' and staff cars:

- Parking area across side Hotel Continental Forum (1 Leu / hour)

Other parking spaces can be found across the city of Sibiu, all accessible with a parking ticket that costs 1 Leu and that can be acquired from any news stand.

Auxiliary cars that acquire a Rally Pass from the rally secretariate will be able to park in the vicinity of the service park (Piata Huet). This location is accessible from Mitropoliei Street.

#### **Service Park Manager**

For any questions or additional information, please contact the Service Park Manager:

Ioan Badiu

Email: [utu.badiu@raliulsibiului.ro](mailto:utu.badiu@raliulsibiului.ro)

Phone: +4 0742 750 521











---

## TYRES

---

The use of slick tyres is prohibited.

### **Tyre Marking**

Tyre marking is obligatory for all the competitors.

During the rally, the following procedures will be followed:

- All the tyres will be marked in accordance with the Appendix V of the FIA Regional Rallies Championships Sporting Regulations;
- At the start of each Day, the four tyres mounted on the car and the two possible spare tyres will be marked using special sticker.
- At the start of the following sections (exit from each service Park or service zone), the same marking operation will be carried out using a different sticker;
- Tyres which have not been used on the previous section or which, even if they have already been used, are nevertheless in conformity with the regulations, may be marked again;

A tyre marking zone reserved exclusively for this purpose shall be established at the exit of the service Park, immediately after the refuelling zone and the tyre marking sign shall denote its entrance and exit.

For the sole purpose of assisting with the tyre marking procedure, one member of the team of each crew, wearing a reflective green tabard, according to Road Traffic Laws may have access this zone and only for the period of time during when the car is in that zone.

### **Means of control**

At any time during the rally, controls may be carried out to check the conformity of the tyres. Any tyre which is not in conformity will be marked with a special stamp and must not be used.

### **Vehicle equipment**

Each entering vehicle is allowed to carry, on-board and properly fixed, a maximum of two spare wheels.

At all times during the event, the tread depth of the tyres fitted on the car must not be less than 1.6mm over, at least,  $\frac{3}{4}$  of the thread pattern.

### **Start Delays**

The adjustment of tyre pressure is permitted:

- When the start of a stage is delayed by more than 10 minutes for any competitor,
- In regroupings of more than 10 minutes duration for any competitor, if followed by a special stage or super special stage.

### **Sanctions**



Any breach of the tyre regulations will be reported to the stewards, who may impose a sanction as provided for in Articles 152 and 153 of the Code.

---

## FUEL

---

### GENERAL

Crews may refuel only in the RZ's or remote RZ's designated in the road book, except as detailed under **Article 50 of the FIA RRSR**.

See **APPENDIX 9**

Solely for the purpose of assisting with the refuelling procedure of their car, two team members of each crew, identified with the official passes supplied by the organizers (Service) and wearing a reflective green tabard, according to Road Traffic Laws, may access this zone.

In the event of a breakdown, the car concerned may be pushed out of the zone by the crew, officials and/or the two team members without incurring a penalty.

### PROCEDURES

Only actions inside a RZ directly involved in the refuelling of the competing vehicle are permitted.

In all RZ's, a 5 kph speed limit will apply.

Engines must be switched off throughout the refuelling operation.

It is recommended that the crew stay outside the car during refuelling; however, if they remain inside, their safety seat belts must be unfastened.

### PERSONNAL PROTECTIVE EQUIPMENT (PPE)

Team members assisting during refuelling, should wear industry homologated PPE for hydrocarbons handling, such as safety glasses, protective rubber gloves, safety shoes and anti-static clothing.

It is highly recommended that the team members to wear fire-resistant clothing.

## FREE PRACTICE & QUALIFYING STAGE

### Participants

FIA and ERC Priority drivers.

### Location

Rallycross track, near Firefighter's training base, Strand Neighborhood

### Schedule

08:00/09:30	Free Practice – FIA, ERC and National Seeded Drivers	Rallycross track
10:00/11:00	Qualifying Stage – FIA, ERC and National Seeded Drivers	Rallycross track

### RUNNING OF THE FREE PRACTICE

The eligible drivers may complete a maximum of 2 passages of practice within the timeframe specified in the Programme.

### STARTING LIST

A starting list will be published (see – Programme).

The procedures stipulated for the start of a special stage will apply. After Qualifying, the eligible drivers are not authorised to return to the Shakedown stage.

### PARC FERME AFTER THE QUALIFYING STAGE

Any service on a car once it has started the Qualifying stage is prohibited. All cars which participate in the Qualifying stage must immediately and directly be brought to the Parc Fermé and remain there until released by the Stewards.

### ATTRIBUTION OF STARTING POSITIONS

Competitors will choose their start position for the rally according to the results of the Qualifying stage.

The fastest driver will choose his position first, then the second, followed by the third etc.

**See Programme** for the location and time of day of this procedure.

Any driver who does not arrive on time to choose his position will automatically choose his position last.

---

## SHAKEDOWN

---

### Participants

All other drivers, who have registered.

### Shakedown Fee - 100 Euro\*

\* only for the National Rally Championship drivers

### Location 1:

Sibiu, Gușterița Neighborhood (the road towards the Monumental Cross)

Length: 2,1 km, see Shakedown Roadbook.

### Location 2:

Length: 4,0 km, see Shakedown Roadbook.

### Schedule Program

#### Start Intervals

The start interval will be minimum of 1 (one) minute.

The reconnaissance of the Shakedown track will be made during the reconnaissance program.

The equipment for the driver/co-driver at the shakedown must be the same with the one used during the rally (overall, helmet, boots).

#### Disclaimer

#### FREE PRACTICE / SHAKEDOWN

Any person on board the car during shakedown who is not entered for the rally must have signed the disclaimer – in the **Appendix 7** of this Supplementary Regulations – which must reach the Clerk of the Course until July 24 - 20h00, accompanied by photocopy of Passport or Identity Card, waving the Organisers as well the driver and/or a competitor of any consequence that may result from an accident.

Any private tests excepting the Shakedown are forbidden in Sibiu County, the deviation from this provision attracting a 1000,00 € fee.



## RECONNAISSANCE SCHEDULE

*Orar recunoasteri  
Reconnaissance Schedule*

**Drumurile sunt deschise**  
– **Conduceti cu grija**  
**Roads Open - Drive**  
**carefully**

**INTOTDEAUNA ACEEASI RUTA PENTRU PS**  
**ALWAYS SAME ROUTE of S.S.**

**Mărti, 23 Iulie 2013**

**Tue, JULY-23-2013**

Proba Speciala Special Stage	Localități Roads	Orar Schedule
<b>1 / 3</b> <b>DOBÂRCA</b>	Sibiu – Cristian – Sacel – Saliste – Tilisca – Rod – Poiana Sibiului	<b>09:00 / 18:00</b>
<b>2 / 4</b> <b>CRINȚI</b>	Sibiu – Cristian – Sacel – Saliste	<b>09:00 / 18:00</b>
<b>8 / 11</b> <b>SADU</b>	Sibiu – Cisnadie – Sadu	<b>09:00 / 18:00</b>
<b>9 / 12</b> <b>GĂTU BERBECULUI</b>	Sibiu – Cisnadie – Sadu – Rau Sadului – Sadurel	<b>09:00 / 18:00</b>
<b>10 / 13</b> <b>ȘANTA MAX</b>	Sibiu – Rasinari – Paltinis	<b>09:00 / 18:00</b>

**Miercuri, 24 Iulie 2013**

**Wed, JULY-24-2013**

Proba Speciala Special Stage	Localități Roads	Orar Schedule
<b>1 / 3</b> <b>DOBÂRCA</b>	Sibiu – Cristian – Sacel – Saliste – Tilisca – Rod – Poiana Sibiului	<b>09:00 / 18:00</b>
<b>2 / 4</b> <b>CRINȚI</b>	Sibiu – Cristian – Sacel – Saliste	<b>09:00 / 18:00</b>
<b>8 / 11</b> <b>SADU</b>	Sibiu – Cisnadie – Sadu	<b>09:00 / 18:00</b>
<b>9 / 12</b> <b>GĂTU BERBECULUI</b>	Sibiu – Cisnadie – Sadu – Rau Sadului – Sadurel	<b>09:00 / 18:00</b>
<b>10 / 13</b> <b>ȘANTA MAX</b>	Sibiu – Rasinari – Paltinis	<b>09:00 / 18:00</b>
<b>SHAKEDOWN</b>	Sibiu – Gusterita	<b>13:00 / 18:00</b>
<b>5, 14</b> <b>SUPER SPECIALA</b>	Sibiu – Cartier Strand	<b>15:00 / 18:00</b>
<b>6</b> <b>PĂLTINIȘ NIGHT</b>	Sibiu – Rasinari	<b>22:00 / 23:30</b>
<b>7</b> <b>ȘANTA NIGHT</b>	Sibiu – Rasinari - Paltinis	<b>22:00 / 23:30</b>

---

## ACCOMMODATION

---

### **Hilton Hotel \*\*\*\*\***

Sibiu, Padurea Dumbrava Street, no. 1  
Phone: +4 0726 264 937

### **Ramada Hotel \*\*\*\***

Sibiu, Emil Cioran Street, no. 2  
Phone: +4 0269 235 505

### **Libra Hotel \*\*\*\***

Sibiu, Calea Cioran Street, no. 2  
Phone: +4 0369 428 000

### **Levoslav House Villa \*\*\*\***

Sibiu, General Magheru Street, no. 12  
Phone: +4 0788 143 438

### **Continental Forum Hotel \*\*\*\***

Sibiu, Unirii Street, no. 10  
Phone: +4 0372 692 692

### **Golden Tulip Ana Tower Hotel \*\*\*\***

Sibiu, Scoala De Inot Street, no. 2  
Phone: +4 0269 234 000

### **Casa Luxemburg Hotel \*\*\***

Sibiu, Piata Mica, no. 16  
Phone: +4 0369 101 836

### **Imparatul Romanilor Hotel \*\*\***

Sibiu, Nicolae Balcescu Street, no. 4  
Phone: +4 0269 216 500

### **Ibis Hotel \*\*\***

Sibiu, Calea Dumbravii Street, no. 2-4  
Phone: +4 0269 218 100

### **Parc Hotel \*\*\***

Sibiu, Scoala De Inot Street, no. 1-3  
Phone: +4 0747 423 559

---

## RESTAURANTS

---

### **Restaurant Max – Italian cuisine & Steak House**

Sibiu, Ocnei Street, no. 22

Phone: +4 0269 233 003

Monday – Sunday: 12:00 – 24:00

### **Restaurant Terracotta - Mediterranean cuisine**

Sibiu, Dobrun Street, no. 1

Phone: +4 0744 536 163

Monday – Friday: 19:00 – 02:00

Saturday – Sunday: 12:00 – 02:00

### **Restaurant New York - International cuisine**

Sibiu, Justitiei Street, no. 1A

Phone: +4 0744 536 163

Monday – Friday: 08:00 – 02:00

Saturday: 09:00 – 02:00

Sunday: 12:00 – 24:00

### **Restaurant Casa Blanca - International and Chinese cuisine**

Sibiu, Victoriei Boulevard, no. 34

Phone: +4 0269 244 000

Monday – Sunday: 12:00 – 24:00

### **Restaurant La Turn – International Cuisine**

Sibiu, Piata Mare, no. 1

Phone: +4 0727 528 876

Monday – Sunday: 10:00 – 24:00

### **Restaurant Belvedere - Mediterranean cuisine**

Sibiu, Dorului Street

Phone: +4 0771 607 189

Monday – Sunday: 10:00 – 24:00

### **Restaurant Camara Boierului – Romanian cuisine**

Sibiu, Padurea Dumbrava no. 1 (Hilton Hotel)

### **Restaurant Sergiana – Romanian cuisine**

Sibiu, Piata Mare



## TRAVELLING TO SIBIU – ROMANIA / USEFUL FACTS

### Travelling to Sibiu - Romania by Air

Sibiu International Airport

Sos. Alba-Iulia No.73, 550052 Sibiu, ROMANIA

Telefon: +4 0269 253 135, +4 0269 253 984

Fax: +4 0269 253 131

**Distance from Sibiu International Airport to Service Park (Piata Mare) : 5 km**

### Language

The main language in Romania is Romanian.

### Climate

Sunshine average time in July: 245,6 hours

Average precipitation in July: 84,4 mm

Average air temperature in July: 18.7 °C

Average maximum temperature in July: 25.1 °C

Average minimum temperature in July: 12.5 °C

Record maximum temperature in July: 37.5 °C

Record minimum temperature in July: 4.2 °C

### Time Zone

Standard time zone: UTC/GMT +2 hours

Daylight saving time: +1 hour

Current time zone offset: UTC/GMT +3 hours

Time zone abbreviation: EEST - Eastern European Summer Time

### Sunrise - Sunset in Sibiu

Friday, 20 July: Sunrise: 05:54 / Sunset: 21:05

Saturday, 21 July: Sunrise: 05:54 / Sunset: 21:05

### Currency

Currency is LEI, divided into 100 bani. The denominations in circulation are:

Notes: 1, 5, 10, 50, 100, 200 and 500 lei.

Coins: 1, 5, 10, 50 bani.

1 EURO = 4.42 LEI (June-05-2013)

1 USD = 3.38 LEI (June-05-2013)

### Water

The tap water is safe to drink.

## Electricity

The electric Voltage is the European 220V standard. Plugs and sockets are of a two pin design.

## Telephones

Public telephones can be operated with phonecards.

The International prefix for incoming calls is +40, then delete the leading 0 in the area code.

## Telephone Numbers

Police, Fire, Ambulance 112

Speaking Clock 958 only from ROMTELECOM network

## Smoking

Smoking is permitted by law in enclosed public places (some restaurants have a non smoking area).

## Seat Belts

The driver and all passengers (including those in the back of the vehicle) are required to use seat belts at all times.

## Speed Limits

City areas 50kph (31mph)

Main roads 90kph (56mph)

Motorways 130kph (80mph)

There are other limits indicated by traffic signs.

## Mobile Telephones

It is illegal to use a hand-held mobile telephone while driving.

## Alcohol

The Police can order breathalyser tests of drivers. The permitted level of alcohol in the bloodstream is 0.00%.

## Traffic Rules

Drive on the RIGHT, and overtake on the left.

## Road Tax - Rovigneta

It can be purchased in almost all petrol stations.

---

## SIBIU USEFUL SERVICES

---

### Tourist Information Centres

Sibiu City Hall

Samuel Brukenthal Street, no. 2, Entrance from Piața Mare

Phone: 0040 269 208 913, Fax: 0040 269 208 811

E-mail: turism@sibiu.ro

Schedule: Monday – Friday: 9.00 – 20.00; Saturday – Sunday: 10.00 – 18.00

Sibiu Airport

Sos. Alba Iulia, no. 73

Phone/Fax: 0040 269 253 999

E-mail: turism@sibiu.ro

Schedule: Monday – Friday: 9.30 -17.30, Saturday – Sunday: 10.00 – 18.00

### Banks and Cashpoints (ATMS)

Piața Mare and Nicolae Balcescu Bd.

### Breakdown Services

Auto Leo Service

Frigoriferului Street, no. 17

Phone: +4 0722 588 423

Sigemo Tyres Service

DN1 exit from Sibiu to Brașov, on the left

Address: 557260, Șelimbăr, Sibiului Street, no.26, Sibiu, România

Phone: 004-0269-21.67.76

Fax: 004-0269-21.31.51

e-mail: office@sigemo.ro

Schedule: Monday - Friday: 7-21; Saturday: 8-17

### Car and Van Hire

Toro rent a car +4 0744 705 050

Sixt rent a car +4 0755 126 988

Avis rent a car +4 0729 800 393

### Emergency Services

Fire, Police and Ambulance 112



Sibiu Police (non emergency)  
Revoluției Street, no. 4-6;  
Telefon: +4 0269 216262 / 208204 / 208211; fax: +4 0269 210591;

Sibiu Hospital  
Corneliu Coposu Boulevard, no.2-4,  
Phone +4 0269 215 050

## Rally Emergency Numbers

### TBA

### Doctors

Misam Med – Dr. Iliut Mioara  
Hipodromului Street, no. 19  
Phone: 0748 200 207  
Schedule: Monday – Thursday: 08:00 – 19:00; Friday: 08:00 – 17:00

### Dentists

Dr. Suteu Alexandru  
Xenopol Street, no. 3  
Phone: +4 0723 382 002  
Schedule:  
Monday: 15:00 – 20:00; Tuesday and Thursday: 09:00 – 12:00 / 15:00 – 20:00  
Wednesday and Friday: 09:00 – 13:00; Also available by phone request.

### Pharmacies

Farmacia 24  
Nicolae Balcescu Boulevard

Farmacia San Marco Non Stop Services  
Iorga Nicolae Street, no. 7 Sibiu  
Phone: +4 0269 232 187

### Petrol Stations

Gazprom	Vestem - DN1/E68	GPS: N 45.702500, E 24.247500
Gazprom	Str. Stefan cel Mare	GPS: N 45.788823, E 24.175730
Gazprom	Miercurea Sibiului	GPS: N 45.913056, E 23.721389
Petrom	Sos. Alba Iulia, no. 49	
OMV 1	B-dul. Vasile Milea, no.37 B	GPS: N 45.782767, E 24.165695
OMV 2	Str. Alba Iulia (McDonald's)	GPS: N 45.793449, E 24.130211
OMV 3	Sos. Alba Iulia no.114	GPS: N 45.792414, E 24.111120

## Taxi

Taxi 953 – Phone (0269) 953 – only 953 from ROMTELECOM network

Taxi 942 – Phone (0269) 942 – only 942 from ROMTELECOM network

## Car Wash

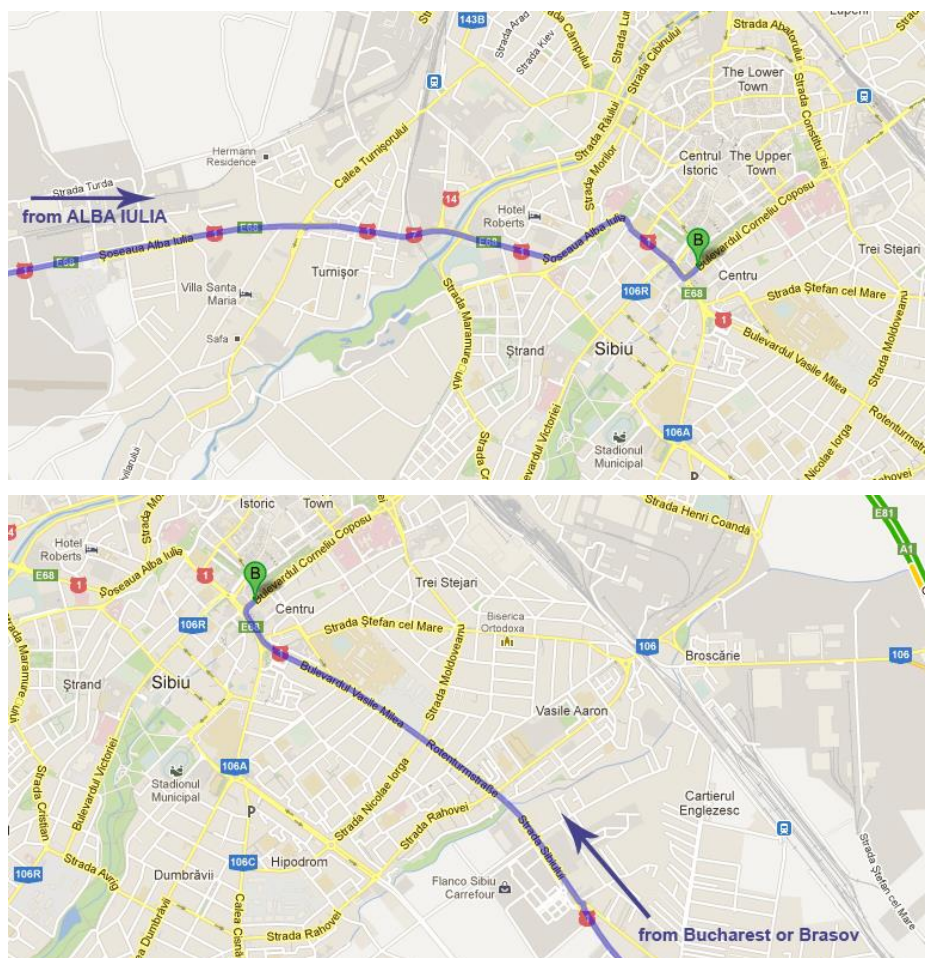
Autogarii Street, no. 15A

Phone: +4 0741 188 697

Schedule: Monday – Friday: 08:00 – 19:00; Saturday: 08:00 – 17:00

## UESFUL MAPS

Getting to the **PARKING SPACE RESERVED FOR ERC PARTICIPANTS** (next to the local "Radu Stanca" theatre) from Alba Iulia or from Bucharest



## Getting to the SERVICE PARK / HQ / Eurosport / Media (Piata Mare)

Route: General Milea Boulevard – Andrei Saguna Street – Bastionului Street - Mitropoliei Street – Piata Mare (right turn at the end of Mitropoliei Street)





## Getting to the VIP GUEST area (Piata Huet)

Route: General Milea Boulevard – Andrei Saguna Street - Bastionului Street – Mitropoliei Street – Piata Huet (entry right ahead at the end of Mitropoliei Street)



## Getting to the SPECIAL STAGES (from the Service Park)

Route for Crinti & Dobarca: Service Park (Piata Mare) - Gheorghe Lazar Street – Corneliu Coposu Boulevard – Piata Unirii (Ramada Hotel) – Andrei Saguna Street – Sos. Alba Iulia – towards Sebes

Route for Paltinis, Santa, Sadu: Service Park (Piata Mare) - Gheorghe Lazar Street – Corneliu Coposu Boulevard – Piata Unirii (Ramada Hotel) – General Milea Boulevard – Calea Dumbravii Street – past Padurea Dumbrava – towards Paltinis



---

## PARKING AROUND SIBIU

---

**1. Paid parking area in Cazarma 90** (across the street from Continental Forum Hotel)

Route to location: Service Park (Piata Mare) – Nicolae Balcaescu Boulevard – parking area is on the left

**2. Parking spaces of Mitropoliei Street** (free parking)

Location: the street is localized between the Service Park (Piata Mare) and Andrei Saguna Street

**3. Parking spaces on Postei Street** (free parking)

Location: Postei Street is perpendicular to Mitropoliei Street, at the middle of Mitropoliei Street

**4. Parking spaces on Mos Ion Roata Street** (free parking)

Route to location: VIP Guest area entrance (Piata Huet) – Alexandru Odobescu Street – first street on the right, immediately after passing Gong Theatre

## ATTENTION!

**Paid parking requires a parking ticket. This ticket costs 1 Leu / day and can be purchased at any news stand in Sibiu.**

**Do not park in areas that are marked as inappropriate. Your car will be towed if found parked in restricted areas.**



---

## EVENTS DISTANCES

---

### Section 1, Friday, July 26th, 2013

SS1, 3 Dobarca 7,3 km, first participant at 14:01 & 17:52

SS2, 4 Crinti 28.7 km, first participant at 14:44 & 18:35

SSS Parallel 3,8 km, first participant at 19:38

SS6 Paltinis Night 10 km, first participant at 21:48

SS7 Santa Night 16 km, first participant 22:11

### Section 2, Saturday, July 27st, 2013

SS8, 11 Sadu (asphalt) 8,5 km, first participant at 10:27 & 14:08

SS9, 12 Gatul Berbecului 32 km, first participant at 10:50 & 14:31

SS10, 13 Santa Max 20.7 km, first participant at 11:43 & 15:24

SSS Parallel 3.8 km, first participant at 17:34

**The events close with one hour and a half before the start for the first participant. Between laps, access for cars is not permitted. Don't forget to properly equip your vehicle. Please take action against people that do not respect the safety reglementations.**

---

## OTHER DISTANCES

---

From the service park to the start of SSS5,14 Parallel = 3 km, 15 mins

From the service park to the start of SS1, 3 Dobarca = 42.1 km, aprox. 1 hour

From the service park to the end of SS1, 3 Dobarca = 40 km, 50 mins

From the service park to the start of SS2, 4 Crinti = 20 km, 30 mins

From the service park to the end of SS2, 4 Crinti = 27.5 km, 35 mins

From the service park to the start of SS6 Paltinis Night = 14.7 km, 30 mins

From the service park to the start of SS8, 11 Sadu = 21 km, 30 mins

From the service park to the end of SS7 Santa Night = 18 km, 30 mins

From the service park to the start of SS9, 12 Gatul Berbecului = 36.4 km, 50 mins

From the service park to the end of SS9, 12 Gatul Berbecului = 36 km, 45 mins

From the service park to the start of SS10, 13 Santa Max = 33 km, 50 mins

---

## SS1, 3 DOBARCA

---

First participant at 14:01 & 17:52

### Access to the end of the Dobarca Special:

- Road E68, from Sebes (Alba county)

The start of this event is in Poiana Sibiului. The first written account of Poiana Sibiului dates from 1537. Compared with the neighbouring villages, Poiana is a later settlement of Romanian population that moved higher in the mountains presumably dislocated by Saxon settlements. The occupation shifted from agriculture to sheep-herding, which remains even today the main occupation.

Poiana Sibiului is one of the richest communes in the country.

Immediately after the start of the event the participants encounter several speed turns. The first 2.5 kilometers of the event provide great locations for spectators. In the woods we can find a couple spectacular hairpin turns. Immediately after exiting the woods, spectators have a great area to view the racers. The finish of the race is a 600 meter straight drop.

All the places indicated for spectators are completely safe and each place offers a large view of the event – sometimes you can see two participants racing at the same time.

We urge spectators to take caution, including staying at a safe distance from the road, because Dobarca is a speed event and there is the risk of getting hit by stray rocks.

Dobarca and Poiana Sibiului are part of **Mărginimea Sibiului**, an area which comprises 18 Romanian localities in the south-western part of the Sibiu county, in southern Transylvania, all of them having a unique ethnological, cultural, architectural and historical heritage.

The oldest church in the area can be found at Saliste; it is a painted church dating to 1674. Other old churches are the wooden church from Poiana Sibiului - 1771 - and the church from Talmacel - 1776.

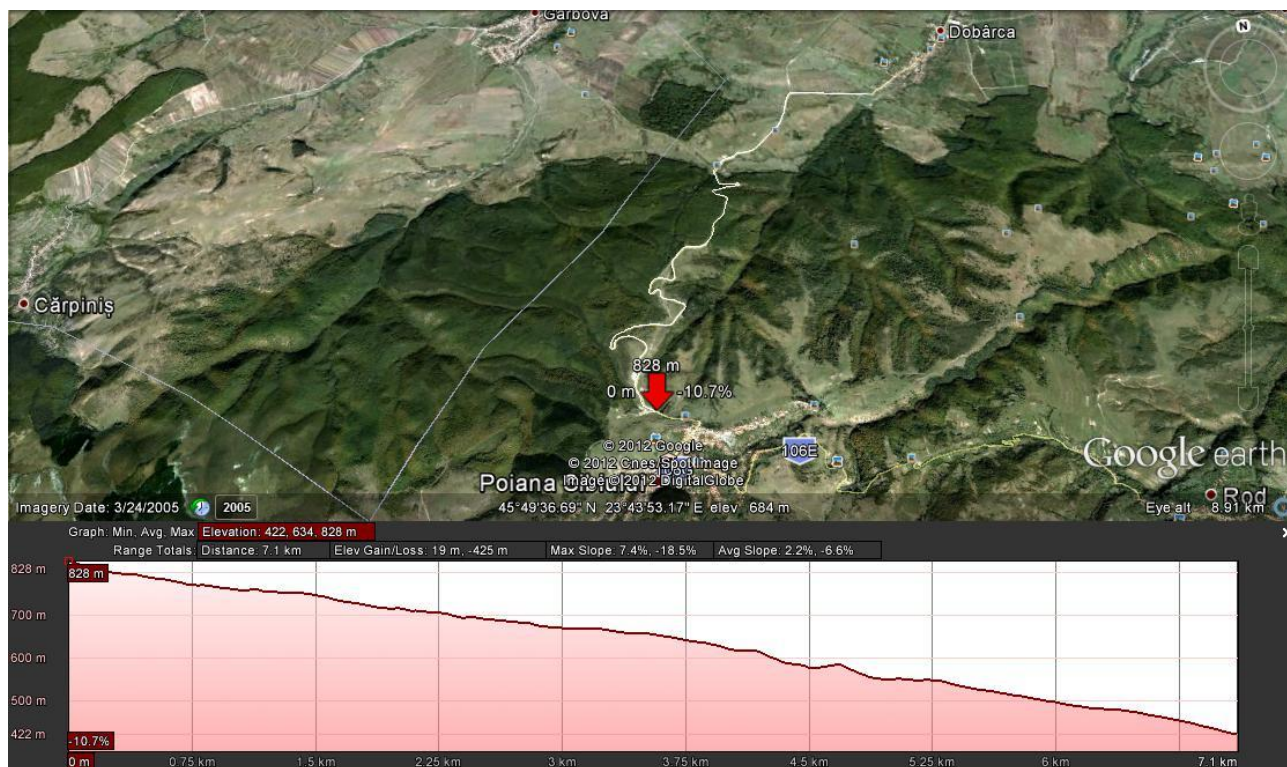
In Rasinari and Saliste there are some small village museums and also memorial houses. Emil Cioran is the best-known personality to have been born in this area. Additionally, Octavian Goga, a Romanian poet and a politician from the interwar

period, along with more than six Romanian academicians, are natives of this area. There is a museum in Sibiel dedicated to glass-painted icons.

Close to Tilisca there can be found the remains of a Dacian citadel, situated on a hilltop with a panoramic view towards the Transylvanian Plateau.

A more modern museum can be found in Sadu, the place where the first electrical hydro-power plant was built in 1896 - the third one in Europe.

### GPS VIEW OF SS1, 3 DOBARCA



**Coordonates:**  
45°49'36.39"; N 23°44'39.00"



---

## SS2, 4 CRINTI

---

First participant at 14:44 & 18:35

### Access to the end of the Dobarca Special:

- Road E68, from Saliste (from the city center towards Crinti)

The start of the event is in Saliste, a town in Sibiu county, in the centre of Romania, 21 km west of the county capital, Sibiu, the main locality in the Marginimea Sibiului area. The end of the event is in Sibiel.

The area was inhabited for a very long time, and on a hill between Săliște and the nearby commune of Tilisca there are the ruins of an old Dacian citadel. The first document mentioning the town is from 1354 and refers, in Latin, to *Magna Villa*. Early names would be *Nogfalu* in Hungarian and *Grossdorf* in German. Later, in 1383 the village is known as *Magna Villa Valachiealis* (Big Village of the Vlachs), denoting its ethnically Romanian population. Still later, it was one of the villages in the Tara Almasului, an area sometimes ruled by Wallachian rulers.

Around 1485 it was included in one of the seven seats of Saxondom. In the late 18th century Săliște became an important village of the Romanian community and the most important cultural centre in the Mărginimea Sibiului area. In 1774 an important local revolt of the Romanian population took place; members of this community also participated in the revolution of 1848, the Transylvanian Memorandum movement and almost every important event in the National awakening of the Romanians in Transylvania

This event is of a great complexity, with an ascend of 17 kilometers, followed by a downward part and the final flat surface ending. The event is held in portions of woods, with many tight turns and portions of high speed racing. On some portions, when exiting the woods, there is a change from a rocky surface to a more sandy part.

The last 4-5 km portion of the event is maybe the most exciting, on the side of a creek, with tight speed turns and bridges. This will be the portion with the most spectators, this is why we urge you to stay on the other side of the creek, as far away possible from the road. Access towards the end of the event is made from Sibiel and parking spaces for vehicles can be found beyond a radius of 2 kilometers from the end point of the event.

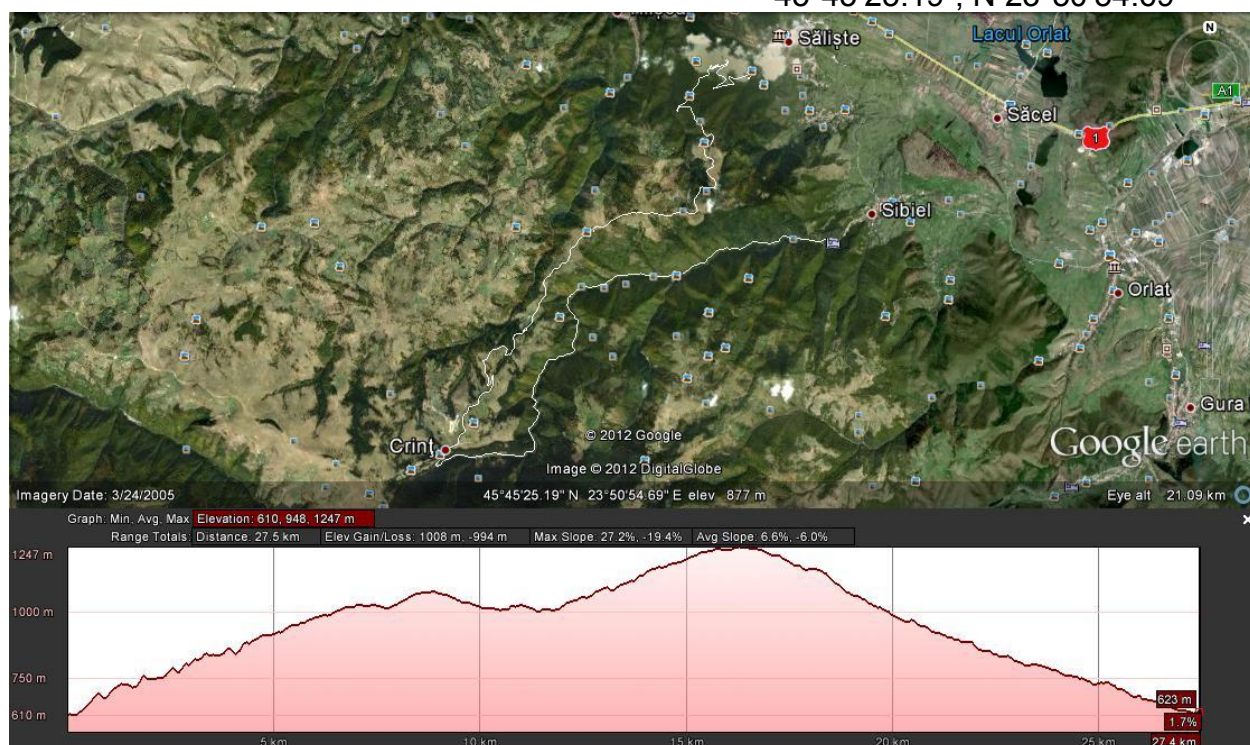
We kindly ask that you follow the instructions of the officials at the end point of the event.





**GPS VIEW OF SS2, 4 Crinti**

**Coordonates:**  
45°45'25.19" N 23°50'54.69"





## SSS PARALLEL

First participant at 19:38 (Friday) & 17:34 (Saturday)

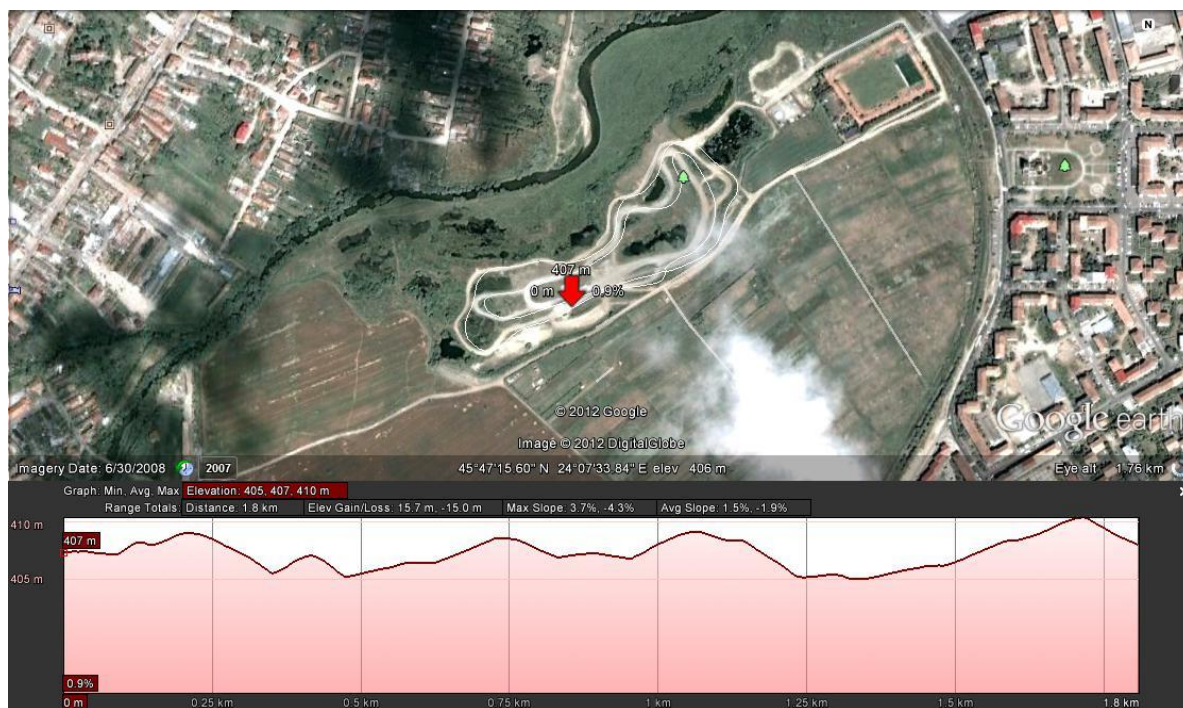
### Access to the Parallel Superspecial:

- the Strand neighborhood. Way to get there: Service Park in Piata Mare-Balcescu Boulevard-Hotel Continental- Alba Iulia Road, towards Sebes. Make a left before Cibin river. After 300m you will take a right turn over the railroad tracks. You can park your car, once passed the railroad tracks, on the right. Parking on the left is prohibited.

The event has 2 drivers in parallel, at all times.



## GPS VIEW OF SSS PARALLEL



### Coordonates:

47°45'15.60"; N 20°07'33.84"

---

## SS6 PALTINIS NIGHT

---

First participant at 21:48

**Access to Paltinis:** from Sibiu, through Rasinari, 17 km, aprox. 30 mins

**Very important fact!** We recommend that you take in consideration the great number of fans that will be going to attend this event. It is likely that the parking area for this event will be placed at about 2-3 kilometers away from the Curmatura caban. This is the place for the start of the event. The stop point of this event is Santa (right after exiting Rasinari). There will be men of order and policemen that will guide you.

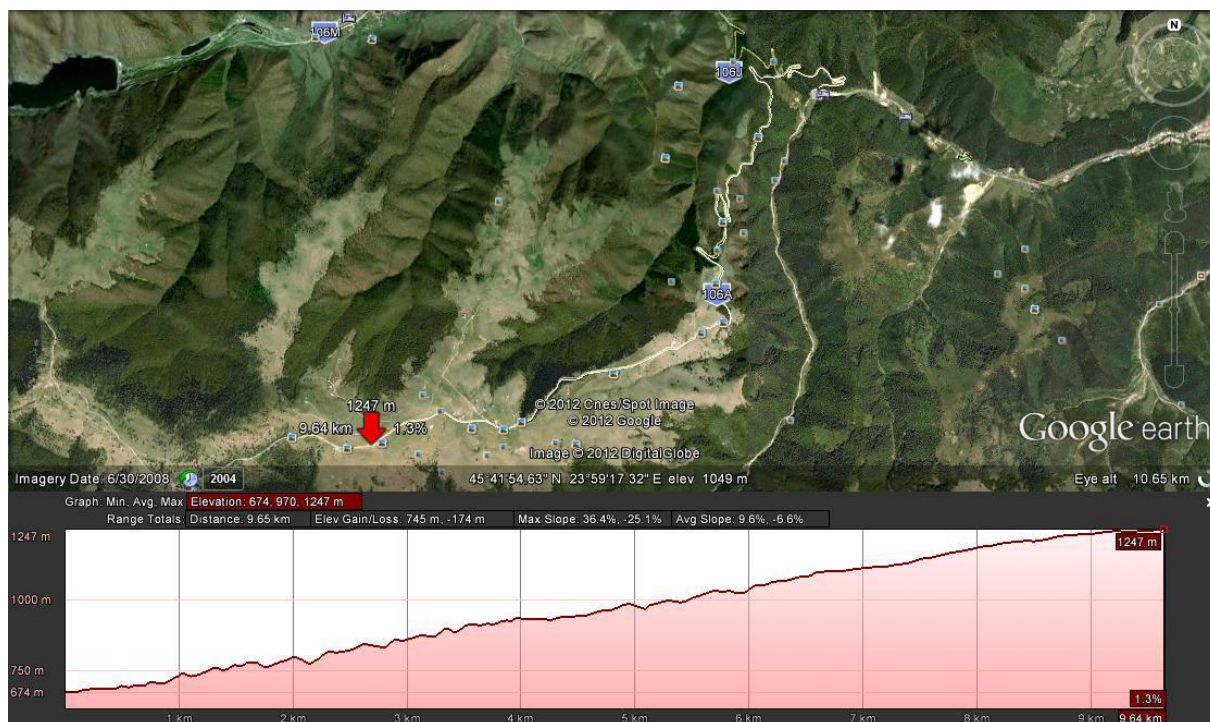
The first 10 kilometers of the event have several hairpin turns. The end of the event is based on speed. This event is 100% asphalt based.

The start point of the Paltinis Night event is 200 meters away from the end point of the Santa Night event.

**Parking on the side of the road is not permitted! This can lead to cancellation of the event. Paltinis Night and Santa Night will be held in the same time. If you wish to move from one event to another, please take consideration of what people in charge of the event tell you. In no way should you be on the road on which the event is held.**



## GPS VIEW OF SS6 PALTINIS



### Coordonates:

45°41'54.63"; N 23°59'17.32"

---

## SS7 SANTA NIGHT

---

First participant at 22:11

**Access to Paltinis:** from Sibiu, through Rasinari, 17 km, aprox. 30 mins

If you want to get to the start of the event, you must take in consideration you will have to go through SS6, Paltinis Night. This road will be closed at 20:30. It is the most spectacular and well know special event in the whole Romanian rally championship. The first 10 km represent a descent through the woods. The first 4 km, up to the Youth Camp in Santa, have an excellent running surface – 2-3 tight corners, the rest is all based on speed.

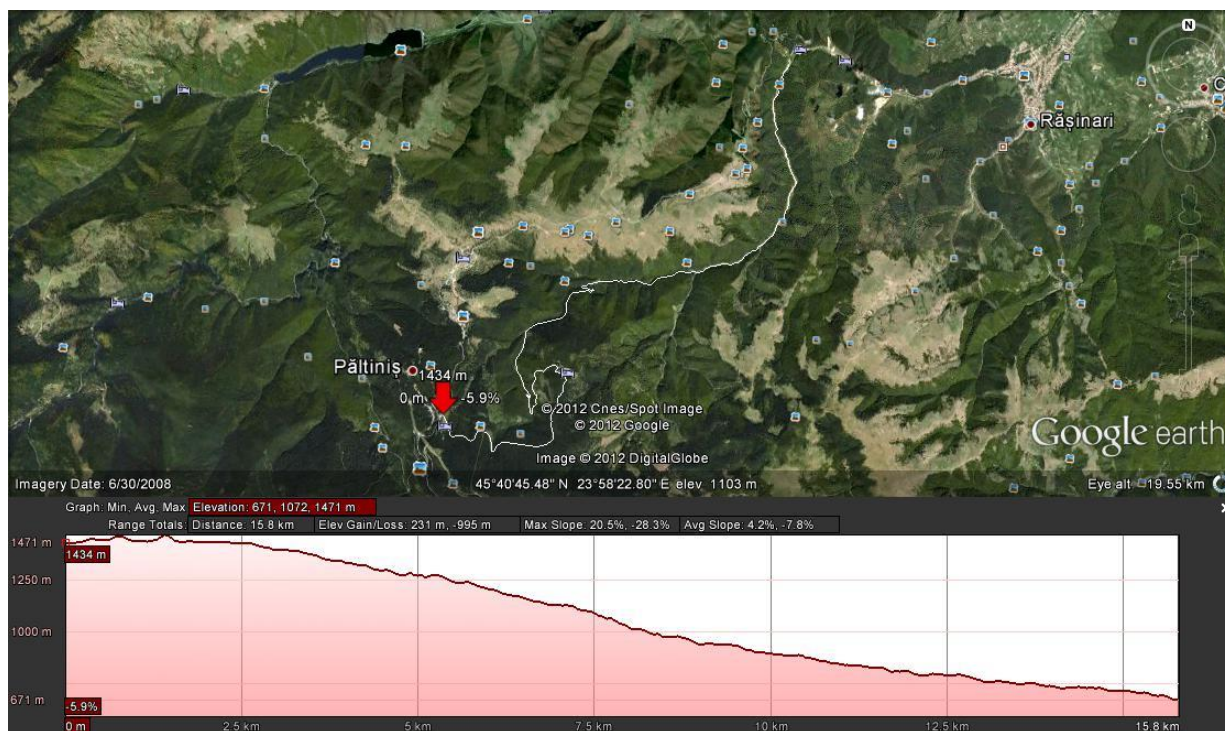
Parking spaces do not exist on this event. One can find a couple of parking spots, but only at the Youth Camp mentioned earlier.

The next 5 km of event are held in the woods, with tight corners and a rough patch of surface. Immediately after exiting the woods (the last 5 kilometers of the event) are the most spectacular. This part has gathered, during the years, a large number of spectators. The running surface is not tough, the racers catching high speed.

At the end of the event, there are multiple parking spaces. The safest places are beyond Steaza creek. **Please do not leave your camp fire unattended and please do not point laser objects towards the racers.**

History taught us that people come with 3-4 days before the event, just to catch good spots to watch.

## PS VIEW OF SS7 SANTA



**Coordonates:**  
45°40'45.46"; N 23°58'22.79"



---

## SS8, 11 SADU (asphalt)

---

First participant at 10:27 & 14:08

**Access to start of the event:** 8.5 km, Sibiu-Cisnădie-Sadu

---

## SS9, 12 GATUL BERBECULUI

---

First participant at 10:50 & 14:31

**Access to start of the event:** 36.5 km, Sibiu-Cisnădie-Sadu-Raul Sadului

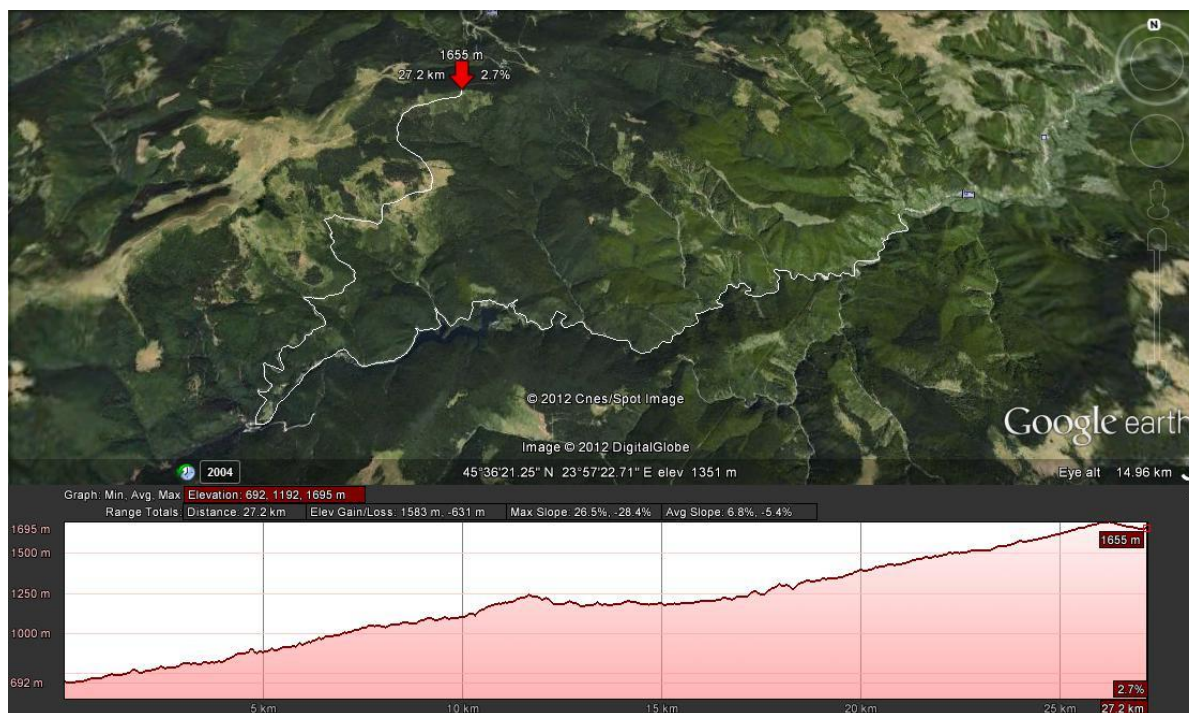
This event is held in a mountain area with a very rough running surface. For those of you who know this rally, this is an excellent event that runs both the car and the pilot ragged. This event is generally based on a road ascension, with the exception of some portions in the middle of the event.

The landscape is fabulous. The event takes place near the Sadu dam, while the ending portion provides a magical view of the valley.

**Those who want to view this event should take extra safety caution for themselves and their car (food reserves, plenty of water, spare tires, etc.), both at the beginning and at the end points of the event.**

Another access route is 33 km long, the last 5 km providing a rough mountain road.

## GPS VIEW OF SS9, 12 GATUL BERBECULUI



### Coordonates:

45°39'09.54"; N 23°56'06.15"

## SS10, 13 SANTA MAX

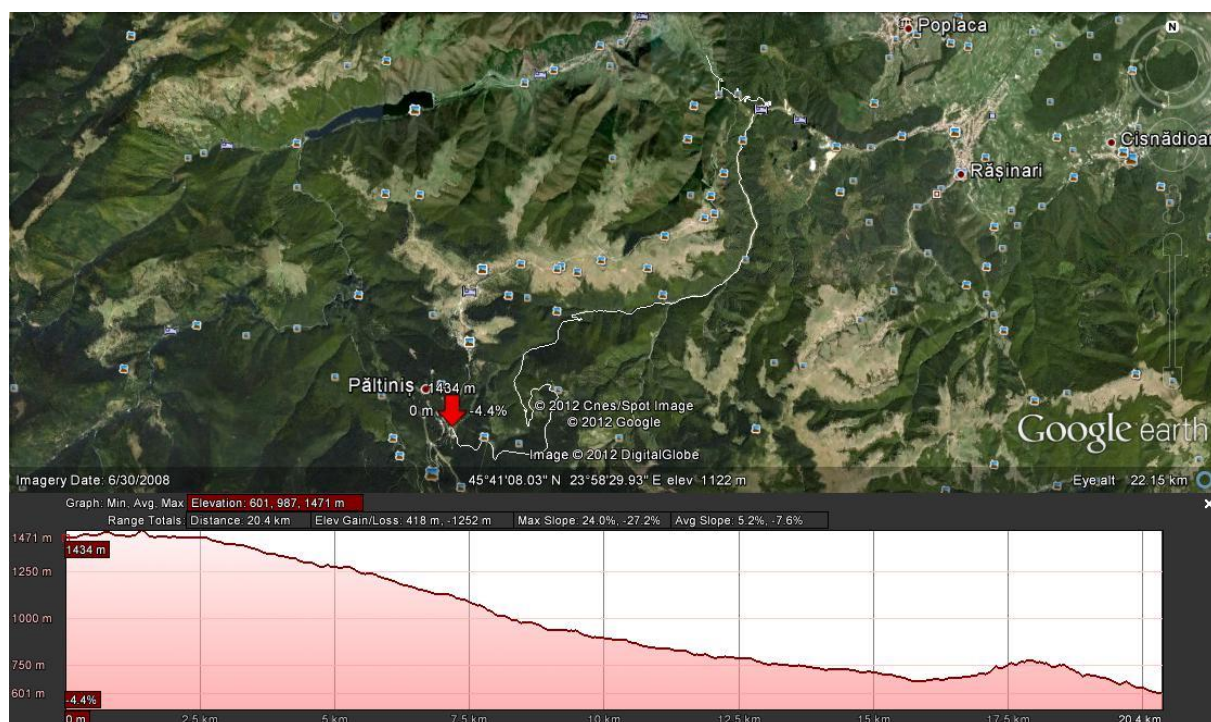
First participant at 11:43 & 15:24

**Access to end point of the event:** from Sibiu, through Rasinari, 17 km, aprox. 30 mins

Santa max offers 4 more kilometers after Santa Night: 2 kilometers of asphalt, part of Paltinis Night, and 2 kilometers of gravel.

All the information mentioned in the Santa section is available for this section as well.

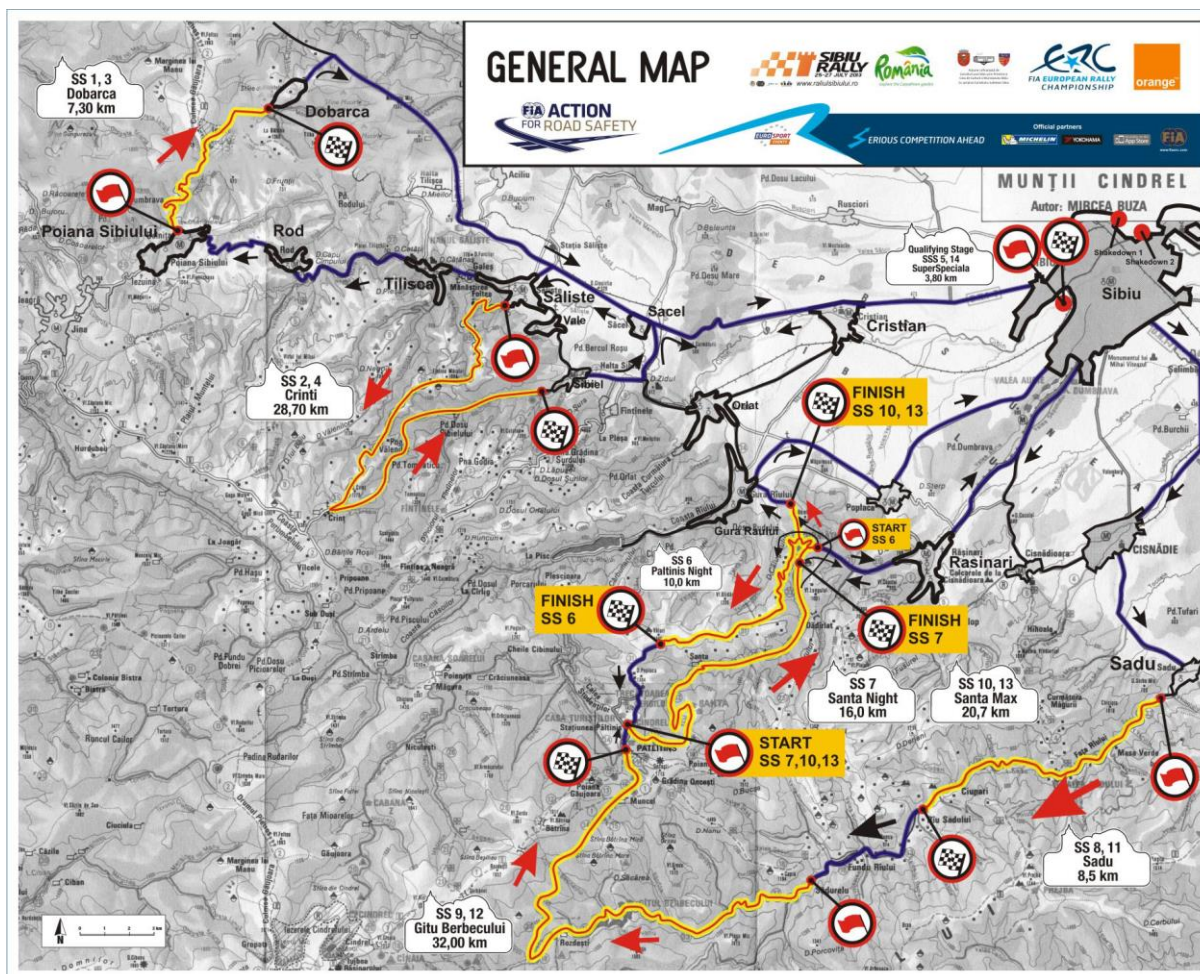
## GPS VIEW OF SS9, 11 SANTA MAX



**Coordinates:**  
45°41'08.03"; N 23°58'29.03"



## APPENDIX 1 – OVERVIEW MAP



## APPENDIX 2 – ITINERARY

Qualifying (Thursday) JULY-25-2013					Qualifying (Joi) 25-IULIE-2013			
SUNRISE 5:59 / SUNSET 21:01					RASARIT 5:59 / APUS 21:01			
CO	PS	LOCATIE	LOCATION	PS	DISTANȚĂ	DISTANȚĂ	TIMP	PRIMA
NR	NR			Km	PARȚIALĂ	TOTALĂ	ETAPĂ	MAȘINĂ
TC No	SS No			SS dist.	Liason Dist.	Total dist.	Target Time	First car due
TCFP		Start of Free Practice (2 treceri / 2 passages)						08:00
FREE PRACTICE CLOSES AT 09:30								
RZQS	Alimentare Refuel Qualifying Stage							
TCQS	Qualifying Stage							10:00
Qualifying Stage				3,80			00:03	10:03
TCPF	Parc ferme in (early check-in permitted)				6,30	10,10	00:35	10:38
Start Order selection at Media Centre / Alegerea locului pe lista de start								12:00

Qualifying



**LEG 1 (Friday) JULY-26-2013**
**ETAPA 1 (Vineri) 26-IULIE-2013**
**SUNRISE 6:00 / SUNSET 21:00**
**RASARIT 6:00 / APUS 21:00**

CO NR	PS NR	LOCATIE LOCATION	PS Km	DISTANȚĂ PARȚIALĂ	DISTANȚĂ TOTALĂ	TIMP ETAPĂ	PRIMA MAȘINĂ
TC No	SS No		SS dist.	Liason Dist.	Total dist.	Target Time	First car due
0		Sibiu START Leg 1 / SERVICE A out - Piata Mare					13:00
RZ 1		Alimentare Refuel		0,10	0,10		
1		Distanța următoarea alimentare Next Refuel	36,00	90,20	126,20		
1		Poiana Sibiului		42,10	42,10	00:58	13:58
	SS 1	DOBĂRCA I	7,30			00:03	14:01
2		Saliste		20,60	27,90	00:40	14:41
	SS 2	CRINȚI I	28,70			00:03	14:44
2A		Regrupare A in Regroup & Tehnical Zone		27,50	56,20	01:20	16:04
		REGROUPARE REGROUP A Piata Mare			Max.	0:15	
2B		REGROUPARE A out - SERVICE B in					16:19
		SERVICE B - Piata Mare	36,00	90,20	126,20	00:30 + 2'	
2C		SERVICE B out					16:51
RZ 2		Alimentare Refuel	36,00	90,20	126,20		
2		Distanța următoarea alimentare Next Refuel	39,80	91,60	131,40		
3		Poiana Sibiului		42,10	42,10	00:58	17:49
	SS 3	DOBARCA II	7,30			00:03	17:52
4		Saliste		20,60	27,90	00:40	18:32
	SS 4	CRINȚI II	28,70			00:03	18:35
5		Unitatea de Pompieri		23,10	51,80	01:00	19:35
	SSS 5	SUPERSPECIALA I	3,80			00:03	19:38
5A		REGROUPARE B in Regroup & Tehnical Zone		5,80	9,60	00:35	20:13
		REGROUPARE REGROUP B Piata Mare			Max.	0:20	
5B		REGROUPARE B out - SERVICE C in					20:33
		SERVICE C - Piata Mare	39,80	91,60	131,40	00:30 + 2'	
5C		SERVICE C out					21:05
RZ 3		Alimentare Refuel	39,80	91,60	131,40		
3		Distanța următoarea alimentare Next Refuel	26,00	41,30	67,30		
6		Curmatura		17,70	17,70	00:40	21:45
	SS 6	PALTINIȘ I NOAPTE / NIGHT (asfalt)	10,00			00:03	21:48
7		Paltinis		5,10	15,10	00:20	22:08
	SS 7	ȘANTA I NOAPTE / NIGHT	16,00			00:03	22:11
7A		Zona tehnica Tehnical Zone in		18,30	34,30	00:45	22:56
		ZONA TEHNICA Tehnical Zone Piata Mare				00:03	
7B		Zona tehnica Tehnical Zone out & FLEXI SERVICE D in					22:59
		FLEXI SERVICE D - Piata Mare	26,00	41,10	67,10	00:45 + 2'	
7C		FLEXI SERVICE D OUT & Parc Ferme in					
		All cars (except restarting crews) must be returned to Parc Ferme no later than					02:15
		Toate masinile (exceptie reinscrisi) trebuie sa ajunga in Parcul Inchis pana la ora					
		Etapă LEG 1 TOTAL	101,80	222,90	324,70		



LEG 2 (Saturday) JULY-27-2013				ETAPA 2 (Sambata) 27-IULIE-2013			
SUNRISE 6:01 / SUNSET 20:58				RASARIT 6:01 / APUS 20:58			
CO NR	PS NR	LOCATIE LOCATION	PS Km	DISTANȚĂ PARȚIALĂ	DISTANȚĂ TOTALĂ	TIMP ETAPĂ	PRIMA MAȘINĂ
TC No	SS No		SS dist.	Liason Dist.	Total dist.	Target Time	First car due
7D		Sibiu START Leg 2 - Piata Mica / Parc Ferme out					09:30
7E		SERVICE E in		0,20	0,20	00:02	09:32
		SERVICE E - Piata Mare		0,20	0,20	00:15 + 2'	
7F		SERVICE E out					09:49
RZ		Alimentare Refuel	26,00	41,30	67,30		
4		Distanța următoarea alimentare Next Refuel	61,20	50,50	111,70		
8		Sadu		20,70	20,70	00:35	10:24
	SS 8	SADU I (ASPHALT)	8,50			00:03	10:27
9		Sadurel		7,30	15,80	00:20	10:47
	SS 9	GĂTU BERBECULUI I	32,00			00:03	10:50
10		Paltinis		0,60	32,60	00:50	11:40
	SS 10	ȘANTA MAX I	20,70			00:03	11:43
10A		REGRUPARE C in Regroup & Tehnical Zone		21,90	42,60	01:00	12:43
		REGRUPARE REGROUP C Piata Mare			Max.	0:15	
10B		REGRUPARE C out - Service F in					12:58
		SERVICE F - Piata Mare	61,20	50,50	111,70	00:30 + 2'	
10C		SERVICE F out					13:30
RZ		Alimentare Refuel	61,20	50,50	111,70		
5		Distanța următoarea alimentare Next Refuel	61,20	50,50	111,70		
11		Sadu		20,70	20,70	00:35	14:05
	SS 11	SADU II (ASPHALT)	8,50			00:03	14:08
12		Sadurel		7,30	15,80	00:20	14:28
	SS 12	GĂTU BERBECULUI II	32,00			00:03	14:31
13		Paltinis		0,60	32,60	00:50	15:21
	SS 13	ȘANTA MAX II	20,70			00:03	15:24
13A		REGRUPARE D in Regroup & Tehnical Zone		21,90	42,60	01:00	16:24
		REGRUPARE REGROUP D Piata Mare			Max.	0:15	
13B		REGRUPARE D out - SERVICE G in					16:39
		SERVICE G - Piata Mare	40,50	49,90	79,10	00:30 + 2'	
13C		SERVICE G out					17:11
RZ		Alimentare Refuel	61,20	50,50	111,70		
6		Distanța pana la Finish Distance to finish	3,80	9,40	13,20		
14		Unitatea de pompieri		3,60	3,60	00:20	17:31
	SSS 14	SUPERSPECIALA II	3,80			00:03	17:34
14A		Zona tehnica Tehnical Zone in		5,80	9,60	00:35	18:09
		ZONA TEHNICA Tehnical Zone Piata Mare				00:03	
14B		Zona tehnica Tehnical Zone out - SERVICE H in					18:12
		SERVICE H - Piata Mare	3,80	9,40	13,20	00:10 + 2'	
14C		SERVICE H out / Sibiu Rally FINISH					18:24
		Podium Ceremony - Piata Mica - Parc Ferme					(19:00)
Etapa LEG 2 TOTAL			126,20	110,60	236,80		
Etapa 1 + Etapa 2 TOTAL			228,00	333,50	561,50	39,96%	
RALLY TOTALS							
Leg			No. SS	SS dist.	Liason dist.	Total dist.	
1			7	101,80	222,90	324,7	31,35%
2			7	126,20	110,60	236,8	53,29%
Overall Totals			14	228,00	333,50	561,5	40,60%

**THANK YOU**

**AND**

**GOOD LUCK**