



14-17 NOVEMBER 2013
WALES RALLY GB
 RALLY OF LEGENDS



Wales – Host Country



WWW.WALESRALLYGB.COM



wrc.com

RALLY GUIDE 1



Contents

1.	Introduction	2
2.	Contact Details	4
3.	Programme and Critical Deadlines	5
4.	Entry Details	6
5.	Service Park	8
6.	Two-way Radio	8
7.	Import of Vehicles and Spare Parts	9
8.	Helicopters	9
9.	Spectator Tickets and Hospitality	10
10.	Accommodation	10
11.	Media	11
12.	Useful Services	12
	Appendix 1 Itineraries and Maps	13
	Appendix 2 Wales Rally GB National	24

Forms

All Forms can be found in the Competitors section of www.walesrallygb.com

This document has no regulatory power. It is for information only.

1. Introduction

Croeso cynnes iawn - a warm welcome to Wales Rally GB, one of the UK's leading motorsports events.

Wales Rally GB is one of the events supported by the Welsh Government. One of the key themes of our Major Events Strategy is to develop a portfolio of events which will enhance Wales' international profile and reputation.

This promises to be a very exciting year for Wales Rally GB - The Rally of Legends - as it moves to its new home in North Wales. The event has always drawn the crowds in North Wales in previous years and I'm sure this move will refresh the event for spectators and competitors alike.

It's widely recognised that Wales has some of the finest rally stages anywhere in the world. The spectacular scenery and landscapes of North Wales will provide the perfect backdrop for Wales Rally GB, which will be the pinnacle for the UK domestic rally season and an exciting finale for the high-profile World Rally Championship this year.

It also shows the Welsh Government's continued commitment to Wales Rally GB, which has significant links with the automotive sector in Wales. Wales is home to around 150 component and systems manufacturing companies and has 15,000 people employed in automotive manufacturing with an annual turnover of £3 billion.

Enjoy your time in Wales, and I hope you may find time to visit some of the outstanding attractions our country has to offer.



Edwina Hart
Minister for the Economy Science and Transport
Welsh Government



Visit: www.walesrallygb.com and www.visitwales.co.uk/major-events



Welcome to the exciting, 'new look' Wales Rally GB. This great event has now been restored to its traditional position as the concluding round of the FIA World Rally Championship and we are confident that a move to a new base in North Wales has helped us to create a truly fitting finale - one that will not only put the skills of the world's top drivers and teams to the ultimate test, but also reinforce the legendary event's position as one of the most challenging and attractive on the WRC calendar.

This comprehensive revitalisation that we've undertaken has only been made possible by an extended commitment and partnership with the Welsh Government and considerable investment by International Motor Sports, the event organiser. It also comes as a result of wide-scale consultation with manufacturers, teams, competitors and spectators.

Whilst South Wales provided us with a fantastic home for Wales Rally GB since 2000, the move north has presented us with a number of significant advantages. Most importantly, perhaps, we are closer to the sport's traditional heartlands, and some of the world's most iconic forest rally stages, many of which are either totally new or haven't been featured in the World Championship since the Nineties. From a public perspective there are significant advantages too, not least that the awesome action is now within a short drive of some of the larger conurbations in the UK such as Liverpool, Manchester and the Midlands.

Highlighting the automotive industry's importance to the Welsh economy, the Rally's new Headquarters and central Service Park are now located on a specially prepared site alongside the Toyota Engine Plant on Deeside in Flintshire.

This new base has allowed us to put together what's almost an entirely new event. Qualifying is at Llandegla on Thursday morning and is followed by a dramatic ceremonial start at Conwy Quay. It's then straight into the action with the reintroduction of challenging night stages in Snowdonia on Thursday evening - Gwydyr, Penmachno and Clocaenog - none of which has featured on the rally route for more than 15 years.

Friday is back on more familiar ground tackling two runs through Hafren, Sweet Lamb and Myherin special stages either side of a remote service in Newtown.

Saturday's stages are set slightly further north closer to Dolgellau starting with two runs through Gartheiniog and Dyfi forests, the latter restored to its full 13.7 mile (22 km) length for the first time since 1998.

The route then returns to Deeside, first via another 13 mile (21 km) classic Welsh forest stage in Dyfnant and finally taking in the first of two new spectator stages set against the theatrical backdrop of Chirk Castle, which dates back to 1295 and is now in the ownership of the National Trust.

Sunday's itinerary en route to the grand finale on the Great Orme sees second runs through both Dyfnant and Clocaenog forests - the latter being the official Power Stage - plus a first visit to Penllyn near Bala, another stage making a welcome return, this time for its first inclusion since 1991. The route back to the ceremonial finish Llandudno also features the second of the reintroduced short spectator stages, this time set in the grounds of Kinmel Park.

It all adds up to 22 Special Stages and 195 mile (314 km) of fiercely fought competition and what we believe to be a superb finish to this year's FIA World Rally Championship.

But there's more... we feel that Wales Rally GB should also be the high-profile climax to our domestic rallying season, not only giving amateur crews a chance to compete alongside the sport's international elite but also for our young talent to impress on the global stage. To that end - and as part of a far-reaching 'Road to Wales' initiative - we've provided discounted entry-fees for crews with British competition licences, free entries to front-runners from the MSA British and BTRDA Rally Championships and set up two slightly shorter National Rallies that share the same high-profile facilities and routes as the WRC event.

On behalf of Rally GB organisers, International Motor Sports and the Motor Sports Association, I would like to thank our principal funding partner, the Welsh Government, for making this invigorating move to North Wales possible. Thanks also go to those at the Toyota Engine Plant in Deeside and the authorities in Conwy, Llandudno and Flintshire who've welcomed the arrival of a World Championship event with real enthusiasm as well as to all our other sponsors and officials, volunteer marshals, local authorities along the route and the other organisations and individuals without whom this event would not continue to be one the flagship events in the FIA World Rally Championship.

To everyone who supports and participates in Wales Rally GB, I send my best wishes for an exciting and safe event.

Alan Gow
Chairman, The Motor Sports Association



1.2 Route Changes for 2013

- The rally moves to North Wales with the Service Park located at the Deeside Industrial Estate, Flintshire.
- Rally HQ will be located at the Service Park in Deeside.
- Reconnaissance will take place over 2 days starting on Tuesday morning.
- The qualifying stage will be located at a new venue in Llandegla Forest.
- The rally will start at Conwy on Thursday evening with autograph sessions for Priority drivers in Llandudno before this.
- There will be 3 special stages run in darkness on Thursday evening. After this all stages will be run in daylight.
- On Saturday and Sunday there will be short special stages at Chirk Castle and Kinmel Park. These are designed for spectators and at both locations competitors will attempt the stages twice.
- The special stages at the Great Orme and Chirk Castle are on asphalt, all other stages will be on gravel.
- The Finish ceremony will take place in Llandudno on Sunday afternoon, crews will then be required to return to Deeside for Parc Fermé.

2. Contact Details

2.1 Permanent Contact Details

Wales Rally GB
Motor Sports House
Riverside Park
Colnbrook
SL3 0HG
UK

Telephone: +44 (0)1753 765100
Fax: +44 (0)1753 765106
Email: rallyoffice@walesrallygb.com
Website: www.walesrallygb.com

2.2 Key Officials

Event Coordinator	Andrew Kellitt	akellitt@walesrallygb.com
Clerk of the Course	Fred Gallagher	fgallagher@walesrallygb.com
Entries Coordinator	Katie Holloway	kholloway@walesrallygb.com
Secretary to the Rally	Penny Deal	pdeal@walesrallygb.com
Marketing Manager	Helen Waight	hwaight@walesrallygb.com

2.3 Rally Headquarters

Rally Headquarters will be operational from Monday 11 November - Sunday 17 November.

Rally HQ - Wales Rally GB
Toyota Engine Manufacturing Division
Tenth Avenue
Deeside Industrial Estate
CH5 2TW
UK

2.4 Media Contact Details

Jonathan Gill
National Press Officer - Wales Rally GB
High Barn
High Barn Road
Effingham
KT24 5PR
UK

Telephone: +44 (0)1372 414120
Email: jonathan.gill@mpacreative.com



3. Programme and Critical Deadlines

3.1 Schedule Before the Rally Week

Thursday 12 September

Supplementary Regulations issued and entries open

Friday 11 October

Closing date for all entries

Monday 14 October

Road Books, Route Map and Rally Guide 2 available

Wednesday 16 October

Closing Date for UK Print Media, Internet Media, Radio & Photographers Media Accreditation

Tuesday 22 October

All priority drivers must notify Vital Equipment Ltd of their fuel requirements

Monday 4 November

Closing date for return of Service Park Forms

3.2 Schedule During the Rally Week

Monday 11 November

09.00 Service Park opens - Deeside

09.00 - 18.00 Rally Office open - Rally HQ, Deeside

11.00 - 18.00 Administrative Checks for P1 & P2 drivers (by appointment) - Rally HQ, Deeside

14.00 - 18.00 Media Accreditation (for recce only) - Media Centre, Deeside

16.00 - 19.00 Collection of Reconnaissance trackers - Cann Office Hotel, Llangadfan, SY21 0PL
N52 41.121 W3 27.772

Tuesday 12 November

07.30 - 16.30 Reconnaissance - Day 1

08.00 - 18.00 Media Accreditation open - Deeside

09.00 - 15.00 Collection of FIA WRC Safety Trackers - Deeside

09.00 - 18.00 Rally Office open - Rally HQ, Deeside

10.00 - 13.00 Certification/Component Sealing for Manufacturers & WRC Teams - Deeside

13.00 - 14.00 Weight & sound checks for Manufacturers & WRC Teams - Deeside

14.00 - 18.00 Administrative Checks for P3 and Non-Priority drivers - Rally HQ, Deeside

15.00 - 20.00 Scrutineering/Component Sealing for P2, P3 & Non-Priority drivers - Deeside
College, Connah's Quay, Deeside

Wednesday 13 November

07.30 - 16.50 Reconnaissance - Day 2

08.00 - 20.00 Media Accreditation open - Deeside

09.00 - 19.00 Rally Office open - Rally HQ, Deeside

16.00 Team Managers' meeting - Rally HQ, Deeside

Thursday 14 November

07.00 - 09.00 Free Practice for P1 and P2 drivers - Llandegla

07.00 - 20.00 Rally Office open - Rally HQ, Deeside

07.00 - 21.00 Media Accreditation open - Deeside

07.00 - 21.00 Media Centre open - Deeside

10.45	Qualifying Stage for P1 and P2 drivers - Llandegla
11.30 - 12.30	Shakedown for P3 drivers - Llandegla
12.30 - 13.30	Shakedown for all other drivers - Llandegla
12.30	FIA Press Conference - Media Centre, Deeside
13.30	Start Order Selection by P1 & P2 drivers - Deeside
14.00	Publication of Start List for Section 1 - Rally HQ, Deeside
15.00	Start of Section 1 - Deeside
22.51	End of Section 1 - Deeside
Friday 15 November	
05.30 - 23.00	Media Centre open - Deeside
06.30	Start of Section 2 - Deeside
07.30 - 20.30	Rally Office open - Deeside
18.28	End of Section 3 - Deeside
20.00	Publication of Start List for Section 4 - Rally HQ, Deeside
Saturday 16 November	
06.00	Start of Section 4 - Deeside
06.00 - 23.00	Media Centre open - Deeside
07.00 - 20.30	Rally Office open - Deeside
16.26	End of Section 5 - Deeside
20.00	Publication of Start List for Section 6 - Rally HQ, Deeside
Sunday 17 November	
05.30 - 23.00	Media Centre open - Deeside
06.30	Start of Section 6 - Deeside
06.45 - 20.00	Rally Office open - Deeside
13.30	Finish Ceremony and Prize-giving - Llandudno
16.00	FIA Press Conference - Deeside
16.00	Final Scrutineering - Deeside College, Connah's Quay, Deeside
18.00	Provisional results published - Deeside

4. Entry Details

4.1 Titles for Which the Rally Counts

FIA World Rally Championship for Manufacturers
 FIA World Rally Championship for Drivers
 FIA World Rally Championship for Co-Drivers
 FIA WRC 2 Championship for Teams
 FIA WRC 2 Championship for Drivers
 FIA WRC 2 Championship for Co-drivers
 FIA WRC 2 Cup for Drivers of Group N cars
 FIA WRC 2 Cup for Co-Drivers of Group N cars
 FIA WRC 3 Championship for Teams
 FIA WRC 3 Championship for Drivers
 FIA WRC 3 Championship for Co-drivers



4.2 Entry fees

Manufacturer Team

Entry Fee for 2 cars €35,700 + VAT at 20% = **€42,840**

WRC Team

Entry Fee for 1 car €6,505 + VAT at 20% = **€7,806**

Entry Fee for 2 cars €13,010 + VAT at 20% = **€15,612**

Additional WRC car(s) serviced by a Manufacturer or WRC Team

Entry Fee for 1 car €6,505 + VAT at 20% = **€7,806**

Support Championships

WRC2 / WRC3 €3,825 + VAT at 20% = **€4,590**

With the optional advertising proposed by the organisers (per entry)

Amateurs £2,165.00 (Sterling) + VAT at 20% = **£2,598**

British Amateurs £1,250.00 (Sterling) + VAT at 20% = **£1,500**

Others £3,845.00 (Sterling) + VAT at 20% = **£4,614**

Without the advertising proposed by the organisers (per entry)

Amateurs £4,330.00 (Sterling) + VAT at 20% = **£5,196**

British Amateurs £2,500.00 (Sterling) + VAT at 20% = **£3,000**

Others £5,100.00 (Sterling) + VAT at 20% = **£6,120**

4.3 Entry Packages

Manufacturers, WRC Teams and Support Championships - WRC Regulations Appendix VI.

Other entries:

	Others	Amateurs/British Amateurs
Vehicle Plates		
Guest	4	2
Service	2	2
Auxiliary	1	0
Passes		
Guest	8	6
Service	10	6
Administration		
Road Books	3 (1)	1 (1)
Rally Guide 2	2 (1)	2 (1)
Route maps	4 (2)	2 (2)
Programme	4	4

() Number of copies to be mailed/couriered to the Team Manager

4.4 Criteria for Acceptance of Entries

The maximum number of entrants will be 80 cars. If more than 80 entries are received the acceptance of entries will be at the discretion of the organisers. A reserve list of a maximum of 10 cars will be created.

To enable amateur crews to have the maximum time to prepare for the event, the first 30 eligible amateur entries received will automatically be accepted. The full entry fee must accompany the

entry and this can be paid by credit card, cheque or bank transfer.

To be eligible for the Amateur category and entry fee:

- neither crew member may be entered on any priority list by the FIA or MSA for rallies in 2013.
- the vehicle is not the property of a motor manufacturer or importer.
- the entrant does not receive support from a motor manufacturer or importer or related sponsor.
- the vehicle must be entered by one of the crew members.

To be eligible for the British Amateur entry fee:

The conditions for the Amateur category above apply, plus the following

- both driver and co-driver must hold a British passport.
- both driver and co-driver must hold a competition licence issued by the MSA.
- both driver and co-driver must be listed on the entry list as British.

The organiser's decision on eligibility for these categories will be final.

5. Service Park

5.1 Location

The Service Park will be located in the grounds of the Toyota Engine Manufacturing Plant in Deeside Industrial Estate, Flintshire. The postcode for this location is CH5 2TW; the GPS reference is N53 13.990 W3 01.291.

The Service Park will be open from Monday morning. Earlier access may be possible by prior arrangement with the organisers. Security will be provided on site from Monday 11 November until Monday 18 November. If you require any additional private security on site please contact the Rally Office.

Service areas will be on a surface of level hardcore.

5.2 Facilities

The following facilities will be provided at various points around the service park:

- Toilets
- Waste Removal
- Hazardous Waste Collection
- Water
- Lighting

The following can be provided - an order form for this can be found at www.walesrallygb.com:

- Private Toilets
- Waste Removal
- Water Supply

Competitors who wish to use a joint service area with other competitors must complete the service park form available at www.walesrallygb.com.

Generators are permitted in the Service Park however these must be super silent diesel or LPG. Generators must be fenced off to restrict access to competent personnel only.

Non-priority drivers will be allocated a service area space of 10m x 10m.

6. Two-way Radio

6.1 Application Procedure

Ofcom is the regulator for the UK communications industries, with responsibilities across television, radio, telecommunications and wireless communications services. Any radio equipment used by a competitor and/or the associated support teams in the UK, must be covered by a licence issued by Ofcom.



Its operation must be strictly within the terms and conditions of the licence. The installation or use of equipment without a licence, or outside the terms, renders the operator/installer liable to prosecution. Upon conviction the equipment is liable to forfeiture together with fines and/or imprisonment.

Should you have any enquiries about your frequency or equipment requirements please contact:
Ofcom

Riverside House
2a Southwark Bridge Road
London
SE1 9HA

Telephone: +44 (0)20 7981 3000
Fax: +44 (0)20 7981 3333
Email: contact@ofcom.org.uk
Website: www.ofcom.org.uk

6.2 Scrutineering

To ensure that illegal equipment (or unauthorised frequencies) are not used during the rally, Ofcom staff will be inspecting competitors' radio equipment at the pre-event scrutineering and will also be present throughout the event itself to monitor and check radio equipment in the rally cars and service vehicles.

6.3 Airborne and Other Requirements

If your requirements are not met by the above, particularly if you require airborne use, exclusive channels or continuous carrier, you should contact JFMG Ltd who distribute Programme Making and Special Events licences on behalf of the Secretary of State.

Any applications should be received a month prior to the Rally.

JFMG Ltd
33-34 Alfred Place
London
WC1E 7DP

Telephone: +44 (0)20 7299 8660
Fax: +44 (0)20 7299 8661
Email: admin@jfm.co.uk
Website: www.jfm.co.uk

7. Import of Vehicles and Spare Parts

7.1 Competitors from the European Union

Competitors coming from the European Union do not need to make any special customs clearance. They may use any vehicle in Great Britain for up to 6 months, provided that the vehicle is not brought with the intention of selling it. All vehicles need to have valid traffic insurance.

Tyres and spare parts can also be imported without clearance.

7.2 Competitors from outside the European Union

Competitors coming from outside the European Union will have to report to customs on their arrival in Great Britain.

Please prepare a list of all the tools and equipment you are bringing with you.

Please contact the Customs Service for detailed information.

Telephone +44 (0)20 8929 0152
Website: www.hmrc.gov.uk

8. Helicopters

8.1 Procedure

Full details of the procedures regarding the flying of helicopters during Wales Rally GB will be available from the Rally Office and at www.walesrallygb.com.

9. Spectator Tickets and Hospitality

9.1 Spectator Tickets

The 2013 Wales Rally GB will feature a completely revised ticketing offer, the result of extensive customer research:

- Adult admittance to individual forest stages reduced to £15* (from £20 in 2012).
- Day Passes re-introduced providing multiple stage access for just £33*
- World Rally Passes available for just £99*
- Extension of the 'Kids for a Quid' scheme to provide those aged between 9-15 years old with a four-day ticket giving access to all 22 stages for just £1*.
- Children aged 8 and under admitted free.
- Individual tickets for the RallyFest Stages priced at £25* with significant discounts available for families. The price for two adults and two children is £42* with an extra £1* for each additional child.

Adult tickets / passes include the a copy of the Official Programme (valued at £7.50) which can be collected throughout the event.

* Terms and conditions apply to all ticket prices

How to buy tickets:

- Online at www.walesrallygb.com
- 0844 847 2251 (max 8 tickets per transaction) open 24 hours a day, 7 days a week, calls charged at Local Call Rate. Groups of 9 or more should call 0844 844 9990

For the latest news and updates follow Wales Rally GB on Twitter @walesrallygb, join the conversation at facebook.com/walesrallygb or visit the website walesrallygb.com.

9.2 Hospitality

2013 VIP offerings will include in-stage hospitality at various points along the route featuring VIP viewing, on-site parking, programmes and refreshments, all provided by corporate hospitality specialist MatchPoint.

Visit www.matchpoint.co.uk/walesrallygb, email walesrallygb@matchpoint.co.uk or call 02920 022 838 for further information.

10. Accommodation

Media Travel has been appointed the official accommodation provider for the Wales Rally GB for the second continuous year.

Their team will be managing accommodation requirements for event organisers, competitors, media and spectators alike.

Media Travel is a specialist travel management company which provides a totally tailored service to meet the individual needs and demands of clients in the motorsports industry. As a full travel management service they also provide assistance with flights and ground transport for the rally, whether travelling from inland or overseas.

They work closely with a trusted network of partner hotels, airlines, car hire firms, ferry companies, rail operators, and offer event rates to our clients.

For further information, or to book, please contact Fiona:

Tel: +44 (0)207 501 1887

Email: walesrallygb@mediatravel.com

www.mediatravel.com



11. Media

11.1 Contact Details Before the Rally

Jonathan Gill

National Press Officer - Wales Rally GB

High Barn

High Barn Road

Effingham

KT24 5PR

UK

Telephone: +44 (0)1372 414120

Email: jonathan.gill@mpacreative.com

11.2 Accreditation Procedure and Criteria

Wales Rally GB is round 13 of 13 of the 2013 FIA World Rally Championship and has to apply strict criteria for media accreditation set out by the FIA, the international governing body of motor sport.

Please read the following guidelines carefully and make sure all the information requested is supplied with your accreditation application and it is posted to the appropriate address.

Failure to supply the requested information, or to sign the disclaimer, will delay the processing of your application.

Accreditation provides access to the media facilities in Rally HQ and the Service Park in Deeside and designated areas in Special Stages.

News and information can be supplied, free of charge, before, during and after the event to journalists and publications who are unable to attend the rally, or do not qualify for accreditation.

If you need help with your application please contact:

Jonathan Gill, National Press Officer

Tel: +44 (0) 1372 414120

Email: jonathan.gill@mpacreative.com

1. International Print Media & Photographers

Requests from International publications must be sent to the FIA Communications Department using the new online international rally-by-rally accreditation system on www.fia.com.

2. Accreditation Applications from all Television Broadcasters

Requests from TV broadcasters should be sent directly to The WRC Promoter GmbH: rally@thesportsman.de

3. Commercial Photographers

Requests from all commercial photographers should go directly to the WRC Promoter GmbH: rally@thesportsman.de. Applications should be submitted by Wednesday 16th October 2013 to allow time for approval.

4. United Kingdom Print Media, Internet Media, Radio & Photographers

Requests from the above must be sent by POST direct to the Wales Rally GB Accreditation Manager, using the form which can be downloaded from www.walesrallygb.com.

Wales Rally GB is allowed to nominate five (5) national/local radio stations to broadcast from the event. A maximum of two (2) passes will be issued to each station. Internet media only available for journalists not photographers.

Applications must arrive prior to Wednesday 16th October 2013.

Guidelines and Information for Accreditation Applications

1. Up to a maximum of three (3) representatives per organisation will be considered for accreditation by the FIA. A separate application form should be submitted for each person to be accredited. A maximum of one (1) pass will be issued to websites (photo tabards are not issued to websites).

2. To be accredited, a publication must:
 - i) have a circulation size and quality that satisfies the criteria of the FIA.
 - ii) be on sale to the public.
3. Accreditation for Press Photographers: The FIA provides 12 (twelve) photographer Tabards for UK-based Photographers. Priority will be given to national publications and agencies based on circulation, frequency and previous coverage of Wales Rally GB.
4. Advertising, PR, marketing, or sponsor representatives are not eligible for accreditation.

Once applications have been processed by Wales Rally GB and approved by the FIA, a letter or email confirming successful accreditation will be sent to the applicant(s). This letter must be produced when collecting passes at the event. No pass(es) can be collected without this confirmation.

12. Useful Services

12.2 Deeside (Flintshire) Information

Tourist Information Centre

Tourist Information Centre, Library, Museum & Art Gallery, Earl Road, Mold, CH7 1AP

Tel: 01352 759 331
 Fax: 01352 759 331
 Email: mold@nwtic.com

Air Travel

Deeside is easy to get to from Manchester International Airport (40 mins) and Liverpool John Lennon Airport (40 mins), with direct transfers by road, coach and train.

For further information visit:

www.manchesterairport.co.uk or www.liverpooljohnlennonairport.com

Car & Van Hire

Name	Phone Number	Website
Sealand Car & Van Hire, Deeside	01244 539898	www.sealandvanhire.co.uk
Deeside 4X4 Ltd, Deeside	01244 819444	www.deeside4x4.co.uk

12.3 Conwy Information

Tourist Information Centres

Llandudno, Library Building, Mostyn Street

Tel: 01492 577577
 Email: llandudnotic@conwy.gov.uk

Conwy, Muriau Building

Tel: 01492 577566
 Email: conwytic@conwy.gov.uk

Car & Van Hire

Name	Phone Number	Website
Aberconwy Car & Van Hire	01492 874669	www.aberconwycarhire.co.uk
Black Cat Van & Truck Hire	01492 585111	www.blackcatvanhire.co.uk



Appendix 1 Itineraries and Maps

(Route 1.1)

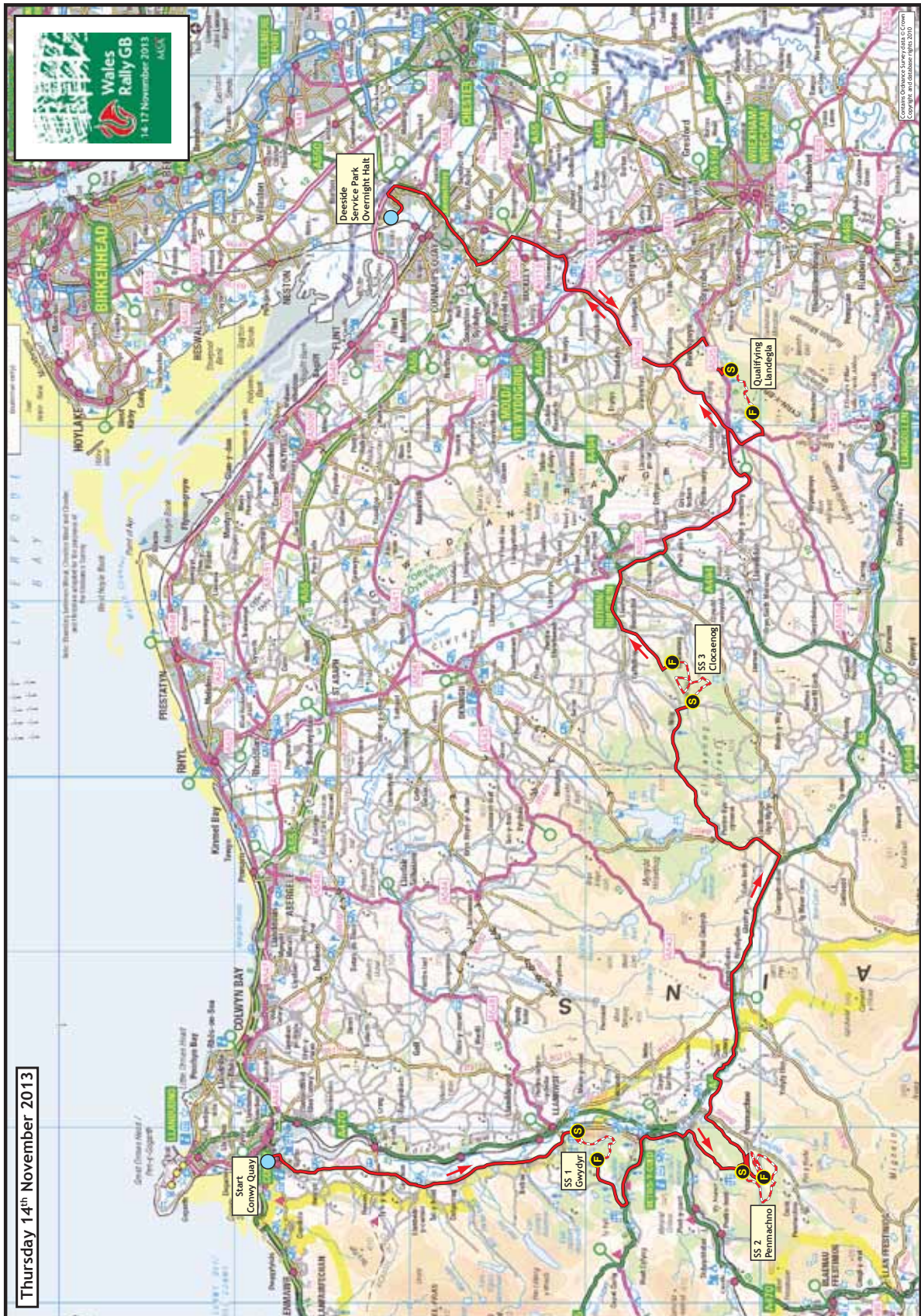
1.1	Thursday Itinerary.....	14
	Thursday Map	15
1.2	Friday Itinerary.....	16
	Friday Map.....	17
1.3	Saturday Itinerary.....	18
	Saturday Map	19
1.4	Sunday Itinerary	20
	Sunday Map.....	21
1.5	Special Stage routes compared to previous years.....	22
1.6	Reconnaissance Schedule (Version 1)	23

1.1 Thursday Itinerary

TC		Location	SS Dist.	Liaison Dist.	Total Dist.	Target Time	First Car Due
SS			Km.	Km.	Km.		
		Free Practice - Start (P1 & P2 only)					07:00
		Free Practice - Finish					09:00
SP		Deeside Service - Out (P1 & P2 only)	-	-	-		10:00
RZ		Refuel (FIA Fuel) - Deeside	-	-	-		
1		<i>Distance to next refuel</i>	(3.20)	(69.00)	(72.20)		
QS			-	34.00	34.00	0:42	10:42
QS		Qualifying Stage - Llandegla	3.20	-	-		10:45
PF		Deeside Parc Fermé - In (Early Check In)	-	35.00	38.20	0:52	(11:37)
		Start Order Selection - Deeside Service Park					13:30

0		Start - Deeside	-	Competitor choice from		15:00	
RZ		Refuel (FIA Fuel) - Deeside	-	-	-		
2		<i>Distance to next refuel</i>	(0.00)	(72.00)	(72.00)		
RZ		Refuel (FIA Fuel) - Llandudno	-	-	-		
3		<i>Distance to next refuel</i>	(24.33)	(134.05)	(158.38)		
0A		Llandudno - Holding In	-	72.00	72.00		
Latest time of arrival for all cars at TC 0A is 17:00							
0B		Llandudno Holding - Out	-	-	-	18:00	
0C		Conwy Quay	-	13.00	13.00	0:30 18:30	
1			-	22.00	22.00	0:34 19:04	
SS 1		Gwydyr	6.30	-	-	19:07	
2			-	17.00	23.30	0:30 19:37	
SS 2		Penmachno	10.51	-	-	19:40	
3			-	40.00	50.51	1:03 20:43	
SS 3		Clocaenog 1	7.52	-	-	20:46	
3A		Parc Fermé & Technical Zone - In	-	55.00	62.52	1:17 22:03	
3B		Parc Fermé Out - Flexi Service - In	-	0.05	0.05	(0:03) (22:06)	
		Flexi Service A (Deeside)	(24.33)	(219.05)	(243.38)	0:45	
3C		Flexi Service - Out Parc Fermé - In	-	-	-	(22:51)	
For all classified cars TC 3C closes at 01:00							
Thursday Totals			24.33	219.05	243.38	Sunrise 07:39	Sunset 16:19

Thursday Map



1.2 Friday Itinerary

TC		Location	SS Dist. Km.	Liaison Dist. Km.	Total Dist. Km.	Target Time	First Car Due	
SS								
3D	Parc Fermé - Out Service - In		-	-	-		06:30	
		Service B (Deeside)	-	-	-	0:15		
3E	Service - Out		-	-	-		06:45	
RZ	Refuel (FIA Fuel) - Deeside		-	-	-			
4	<i>Distance to next refuel</i>		(0.00)	(122.00)	(122.00)			
RZ	Refuel (FIA Fuel) - Llanidloes		-	122.00	-			
5	<i>Distance to next refuel</i>		(68.53)	(39.32)	(107.85)			
4			-	142.00	142.00	2:55	09:40	
SS 4	Hafren 1		32.14	-	-		09:43	
5			-	3.01	35.15	0:42	10:25	
SS 5	Sweet Lamb 1		4.26	-	-		10:28	
6			-	5.81	10.07	0:14	10:42	
SS 6	Myherin 1		32.13	-	-		10:45	
RZ	Refuel (FIA Fuel) - Llanidloes		-	10.50	-			
6	<i>Distance to next refuel</i>		(0.00)	(56.10)	(56.10)			
6A	Newtown Regroup & Technical Zone - In		-	38.00	70.13	1:26	12:11	
6B	Newtown Regroup - Out		-	0.10	0.10	0:20	12:31	
6C	Service - In		-	0.50	0.50	0:04	12:35	
		Remote Service C - (Newtown)	(68.53)	(189.42)	(257.95)	0:15		
6D	Service - Out		-	-	-		12:50	
RZ	Refuel (FIA Fuel) - Llanidloes		-	28.00	-			
7	<i>Distance to next refuel</i>		(68.53)	(40.86)	(109.39)			
7			-	48.00	48.00	1:00	13:50	
SS 7	Hafren 2		32.14	-	-		13:53	
8			-	3.01	35.15	0:42	14:35	
SS 8	Sweet Lamb 2		4.26	-	-		14:38	
9			-	5.81	10.07	0:14	14:52	
SS 9	Myherin 2		32.13	-	-		14:55	
9A	Myherin		-	1.54	33.67	0:40	15:35	
RZ	Refuel (FIA Fuel) - Llanidloes		-	10.50	-			
8	<i>Distance to next refuel</i>		(0.00)	(122.55)	(122.55)			
9A	Parc Fermé & Technical Zone - In		-	133.00	133.00	2:45	17:40	
9B	Parc Fermé Out - Flexi Service - In		-	0.05	0.05	(0:03)	(17:43)	
		Flexi Service D (Deeside)	(68.53)	(191.41)	(259.94)	0:45		
9C	Flexi Service - Out Parc Fermé - In		-	-	-		(18:28)	
		For all classified cars TC 9C closes at 22:00						
Friday Totals			137.06	380.83	517.89			
							Sunrise	07:43
							Sunset	16:18

© International Motor Sports Ltd. 2013 Not for publication without the written permission of IMS



Friday Map



1.3 Saturday Itinerary

TC		Location	SS Dist. Km.	Liaison Dist. Km.	Total Dist. Km.	Target Time	First Car Due
SS							
9D	Parc Fermé - Out	Service - In	-	-	-		06:00
		Service E (Deeside)	-	-	-	0:15	
9E	Service - Out		-	-	-		06:15
RZ	Refuel (FIA Fuel) - Deeside		-	-	-		
9	<i>Distance to next refuel</i>		(38.20)	(116.40)	(154.60)		
10			-	105.00	105.00	2:11	08:26
SS 10	Gartheiniog 1		16.20	-	-		08:29
11			-	6.40	22.60	0:27	08:56
SS 11	Dyfi 1		22.00	-	-		08:59
RZ	Refuel (FIA Fuel) - Ceinws		-	5.00	-		
10	<i>Distance to next refuel</i>		(38.20)	(34.00)	(72.20)		
11A	Machynlleth Regroup & Tech Zone - In		-	10.00	32.00	0:40	09:39
11B	Machynlleth Regroup - Out		-	0.10	0.10	0:20	09:59
12			-	17.50	17.50	0:28	10:27
SS 12	Gartheiniog 2		16.20	-	-		10:30
13			-	6.40	22.60	0:27	10:57
SS 13	Dyfi 2		22.00	-	-		11:00
RZ	Refuel (FIA Fuel) - Ceinws		-	5.00	-		
11	<i>Distance to next refuel</i>		(24.94)	(161.15)	(186.09)		
14			-	59.00	81.00	1:41	12:41
SS 14	Dyfnant 1		21.34	-	-		12:44
15			-	57.50	78.84	1:38	14:22
SS 15	Chirk Castle 1		1.80	-	-		14:25
16			-	3.60	5.40	0:10	14:35
SS 16	Chirk Castle 2		1.80	-	-		14:38
16A	Parc Fermé & Technical Zone - In		-	46.00	47.80	1:00	15:38
16B	Parc Fermé Out - Flexi Service - In		-	0.05	0.05	(0:03)	(15:41)
		Flexi Service F (Deeside)	(101.34)	(311.55)	(412.89)	0:45	
16C	Flexi Service - Out Parc Fermé - In		-	-	-		(16:26)
		For all classified cars TC 16C closes at 19:00					
Saturday Totals			101.34	311.55	412.89		
						Sunrise	07:43
						Sunset	16:17

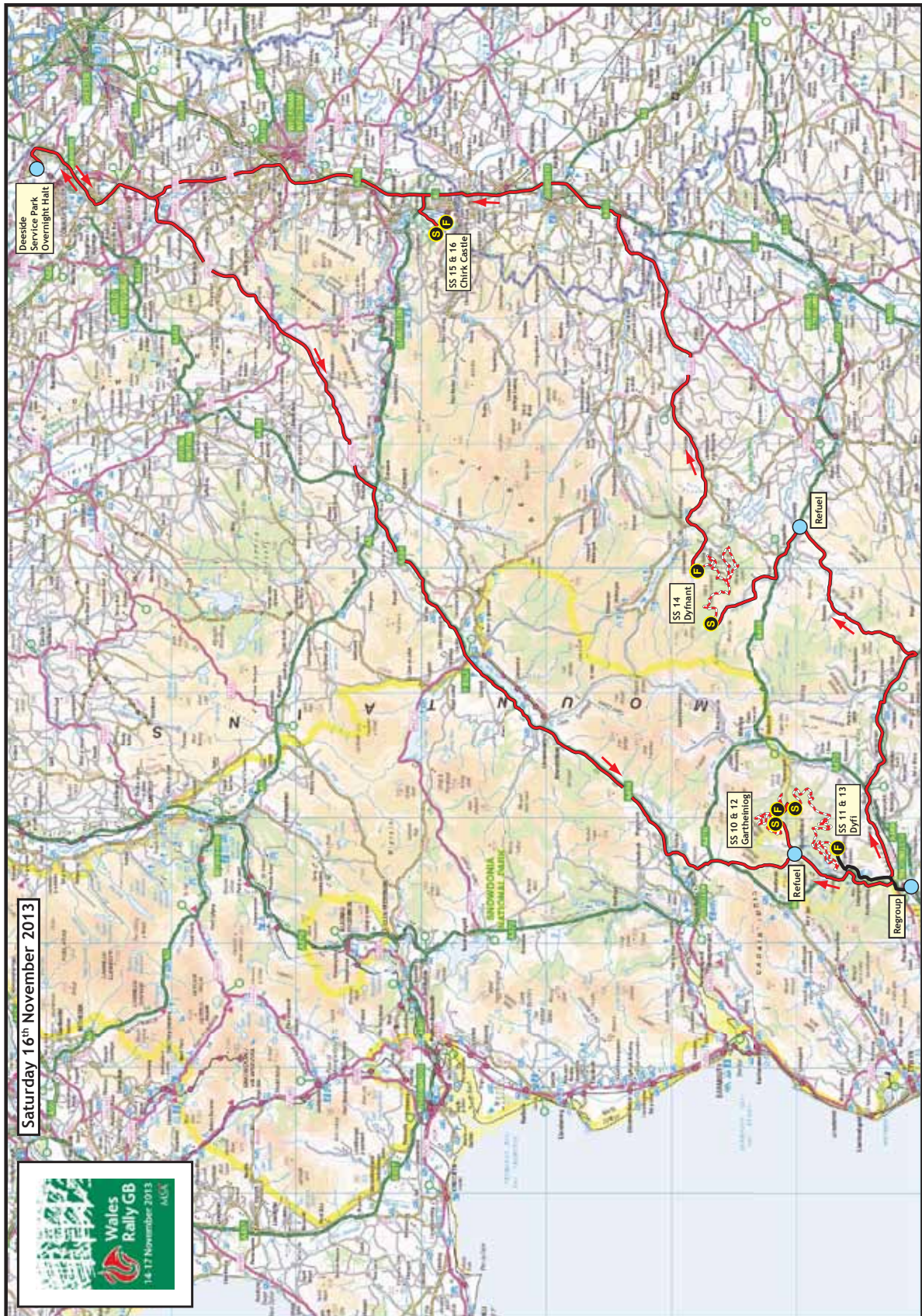
© International Motor Sports Ltd. 2013 Not for publication without the written permission of IMS

Section 4

Section 5



Saturday Map



1.4 Sunday Itinerary

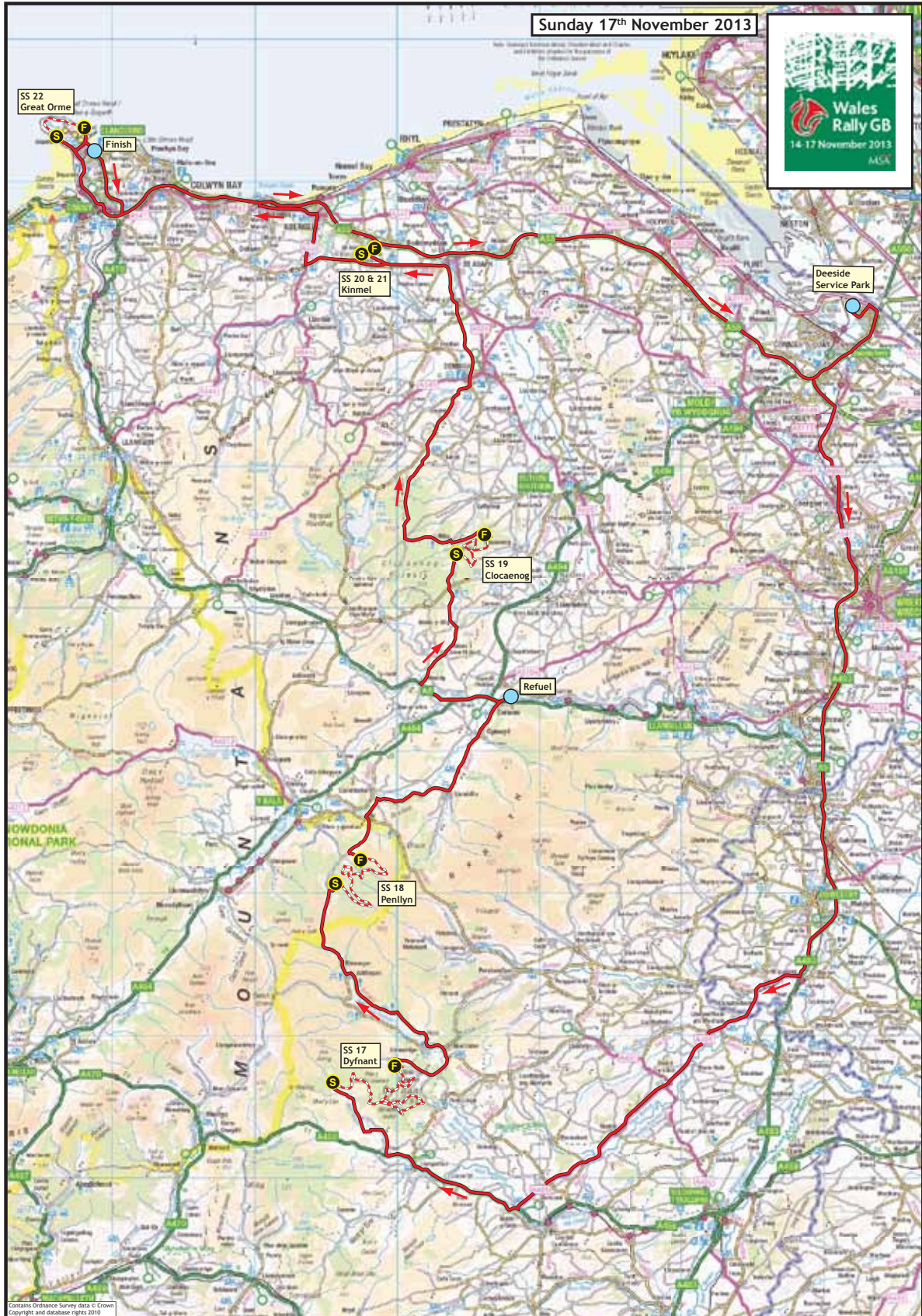
TC		Location	SS Dist. Km.	Liaison Dist. Km.	Total Dist. Km.	Target Time	First Car Due
SS							
16D		Parc Fermé - Out Service - In	-	-	-		06:30
		Service G (Deeside)	-	-	-	0:15	
16E		Service - Out	-	-	-		06:45
RZ		Refuel (FIA Fuel) - Deeside	-	-	-		
12		<i>Distance to next refuel</i>	<i>(35.24)</i>	<i>(147.50)</i>	<i>(182.74)</i>		
17			-	105.00	105.00	2:11	08:56
SS 17		Dyfnant 2	21.34	-	-		08:59
18			-	25.50	46.84	0:59	09:58
SS 18		Penllyn	13.90	-	-		10:01
RZ		Refuel (FIA Fuel) - Corwen	-	17.00	-		
13		<i>Distance to next refuel</i>	<i>(16.52)</i>	<i>(170.40)</i>	<i>(186.92)</i>		
19			-	38.00	51.90	1:05	11:06
SS 19		Clocaenog 2 (Power Stage)	7.52	-	-		11:09
20			-	38.00	45.52	0:57	12:06
SS 20		Kinmel Park 1	2.20	-	-		12:09
21			-	0.90	3.10	0:05	12:14
SS 21		Kinmel Park 2	2.20	-	-		12:17
22			-	35.00	37.20	0:47	13:04
SS 22		Great Orme	4.60	-	-		13:07
22A		Llandudno - Finish	-	1.50	6.10	0:10	13:17
		Llandudno - Podium					
		Deeside Parc Fermé - In		74.00	74.00		(15:17)
		All cars must be in Parc Fermé no later than 17:00					
Sunday Totals			51.76	317.90	369.66		
						Sunrise	07:45
						Sunset	16:15
TOTALS OF THE RALLY							
			SS	Liaison	Total		%
Thursday 14 November			24.33	219.05	243.38		10.0%
Section 1 - 3 SS							
Friday 15 November			137.06	380.83	517.89	% of Special Stages	26.5%
Sections 2, 3 - 6 SS							
Saturday 16 November			101.34	311.55	412.89		24.5%
Sections 4, 5 - 7 SS							
Sunday 17 November			51.76	317.90	369.66		14.0%
Section 6 - 6 SS							
Total - 22 SS			314.49	1229.33	1543.82		20.4%

© International Motor Sports Ltd. 2013 Not for publication without the written permission of IMS

Section 6



Sunday Map



1.5 Special Stage routes compared to previous years

Stage		Comparison
Qualifying	Llandegla	New Stage
SS 1	Gwydyr	New Stage
SS 2	Penmachno	New Stage
SS 3 & 19	Clocaenog	New Stage
SS 4 & 7	Hafren	Same route as 2011 (SS 12 & 15)
SS 5 & 8	Sweet Lamb	Same route as 2011 (SS 13 & 16) but new start.
SS 6 & 9	Myherin	Same route as 2011 (SS 14 & 17) but new start and finish.
SS 10 & 12	Gartheiniog	Revised route from 2011. Some sections the same (SS 4 & 10)
SS 11 & 13	Dyfi	Reverse route from 2011. (SS 5, 6, 8 & 9)
SS 14 & 17	Dyfnant	Same route as 2011 (SS 7 & 11)
SS 15 & 16	Chirk Castle	New Stage
SS 18	Penllyn	New Stage
SS 20 & 21	Kinmel Park	New Stage
SS 22	Great Orme	Reverse route from 2011 (SS 1 & 2)



1.6 Reconnaissance Schedule - Version 1.0

Tuesday 12 th November							
Opens			Closes	Stage	Kilometres		
Priority 1 & 2	Priority 3	All Drivers			SS	To Next	Total
07:30	08:15	08:55		Dyfnant	21.30	26.00	
			10:30	Dyfnant	21.30	42.00	
09:20	10:05	10:45		Gartheiniog	18.60	1.00	
09:40	10:25	11:05		Dyfi	21.50	12.50	
			13:30	Gartheiniog	18.60	1.00	
			13:50	Dyfi	21.50	33.00	
11:30	12:15	12:55		Hafren	32.14	2.92	
12:00	12:45	13:25		Sweet Lamb	4.01	6.50	
12:15	13:00	13:40		Myherin	32.00	29.00	
			15:45	Hafren	32.14	2.92	
			16:15	Sweet Lamb	4.01	6.50	
			16:30	Myherin	32.00		
					259.10	163.34	422.44
Wednesday 13 th November							
07:30	08:00	08:30		Llandegla	3.20	8.00	
			09:00	Llandegla	3.20	24.00	
08:05	08:50	09:30		Chirk Castle	1.50	4.00	
			11:30	Chirk Castle	1.50	55.00	
09:10	09:55	10:35		Penllyn	13.50	6.00	
			12:45	Penllyn	13.50	38.00	
10:20	11:05	11:45		Clocaenog	7.52	4.50	
			13:55	Clocaenog	7.52	38.00	
11:15	12:00	12:40		Penmachno	10.51	4.00	
			14:50	Penmachno	10.51	17.00	
11:55	12:40	13:20		Gwydyr	6.30	4.00	
			15:30	Gwydyr	6.30	31.00	
12:45	13:30	14:10		Great Orme	4.70	4.00	
			16:20	Great Orme	4.70	34.00	
13:30	14:15	14:55		Kinmel Park	2.20	1.00	
			16:50	Kinmel Park	2.20		
					98.86	272.50	371.36

Appendix 2 Wales Rally GB National

1. Format

- There will be 2 Wales Rally GB National rallies - a three day event on Friday, Saturday & Sunday and a two day event on Saturday & Sunday.
- Servicing alongside the WRC teams in the Deeside Service Park.
- Finish ceremony in Llandudno on Sunday afternoon, on the international podium.

2. Timetable

Thursday 12 September

Regulations published and entries open

Thursday 3 October

First Closing date for Entries

Friday 1 November

Final Closing date for Entries

Thursday 14 November

16.00 - 21.00 Scrutineering and Documentation for three day rally competitors - Deeside

Friday 15 November

16.00 - 21.00 Scrutineering and Documentation for two day rally competitors - Deeside

09.00 Start of Day - Deeside

16.28 End of Day - Deeside

Saturday 16 November

10.00 Start of Day - Deeside

17.09 End of Day - Deeside

Sunday 17 November

08.20 Start of Day - Deeside

14.54 Finish Ceremony - Llandudno

3. Eligibility

This will be a National B stage rally for cars complying with MSA Technical Regulations including classes for cars complying with MSA and FIA Historic Regulations.

4. Entry Fees

Entry fee for three day rally: £750.00 + VAT @ 20% = £900.00

Entry fee for two day rally: £500.00 + VAT @ 20% = £600.00

5. Entry Acceptance Procedure

The maximum number of entries will be 100 in total across both the three day and the two day rallies. If less than 50 entries are received for the International event, the number of National entries accepted may be increased.

Entries will be processed as follows:

Priority will be given to entries for the three day rally received prior to the first closing date of Thursday 3 October. These entries will be accepted in order of receipt up to a maximum of 80.

The first 20 entries received for the two day rally prior to the first closing date of Thursday 3 October will be accepted in order of receipt. All other entries for the two day rally received before this date will be recorded in order of receipt and notification of acceptance or otherwise will be sent out on Friday 4 October.

After this date 3 October any remaining entries for both the two day and three day rally will be accepted allocated in order of receipt.

In all instances the maximum number of entries accepted will be 100.



6. Entry Package

Vehicle Plates	
Guest	2
Service	2
Passes	
Guest	4
Service	6
Administration	
Road Books	1
Rally Guide 2	2
Route maps	2
Programme	4

7. Reconnaissance

No reconnaissance of the special stages is permitted for National competitors. Competitors may use subjective route notes purchased from:

Brian & Liz Patterson

Tel: +44 (0)2890 844111, Email: pattpace@aol.com, Web: www.rallynews.net

8. Fuel

Competitors will be permitted to refuel in the following manner:

1. Commercially available pump fuel dispensed from pumps at filling stations marked in the road book.
2. Fuel supplied by the operator of the Refuelling Zones marked in the road book and the Service Park.
3. Competitors may refuel with their own fuel on the forecourts of commercial filling stations subject to the permission of the owner/operator having been obtained.

In the case of Option 3 only refuelling is permitted, all other forms of servicing are prohibited. Judges of Fact will be patrolling.

9. Servicing

The Service Park will be in Deeside. Management or auxiliary service cars will be prohibited on the event. There will be no overnight Parc Fermé.

Wales Rally GB National Itinerary (Three Day)

TC		Location	SS Dist. Miles	Liaison Dist. Miles	Total Dist. Miles	Target Time	First Car Due	
SS								
3D		Deeside - Out	-	-	-		09:00	
RZ		Refuel (FIA Fuel) - Deeside	-	-	-			
4		<i>Distance to next refuel</i>	<i>(0.00)</i>	<i>(77.00)</i>	<i>(77.00)</i>			
PC 1		Newtown	-	-	-		(10:30)	
RZ		Refuel (FIA Fuel) - Llanidloes	-	77.00	-			
7		<i>Distance to next refuel</i>	<i>(42.58)</i>	<i>(24.00)</i>	<i>(66.59)</i>			
7			-	89.00	89.00	2:58	11:58	
SS 7		Hafren	19.97	-	-		12:01	
8			-	1.87	21.84	0:42	12:43	
SS 8		Sweet Lamb	2.65	-	-		12:46	
9			-	3.61	6.26	0:14	13:00	
SS 9		Myherin	19.96	-	-		13:03	
9A		Myherin	-	0.96	20.92	0:40	13:43	
RZ		Refuel (FIA Fuel) - Llanidloes	-	6.52	-			
8		<i>Distance to next refuel</i>	<i>(0.00)</i>	<i>(76.12)</i>	<i>(76.12)</i>			
9A		Deeside - In	-	82.64	82.64	2:45	16:28	
Friday Totals			42.58	178.08	220.66			
							Sunrise	07:43
							Sunset	16:18

© International Motor Sports Ltd. 2013 Not for publication without the written permission of IMS



2013 WALES RALLY GB NATIONAL (3 Days)

N 1.1

11 July 2013

Re-Start

Saturday 16 November 2013

TC	Location	SS Dist.	Liaison Dist.	Total Dist.	Target	First Car
SS		Miles	Miles	Miles	Time	Due
9D	Deeside - Out	-	-	-		10:00
RZ	Refuel (FIA Fuel) - Deeside	-	-	-		
9	<i>Distance to next refuel</i>	<i>(23.74)</i>	<i>(69.22)</i>	<i>(92.96)</i>		
12		-	65.24	65.24	2:11	12:11
SS 12	Gartheiniog	10.07	-	-		12:14
13		-	3.98	14.04	0:27	12:41
SS 13	Dyfi	13.67	-	-		12:44
RZ	Refuel (FIA Fuel) - Ceinws	-	3.11	-		
12	<i>Distance to next refuel</i>	<i>(14.38)</i>	<i>(97.87)</i>	<i>(112.24)</i>		
14		-	36.66	50.33	1:41	14:25
SS 14	Dyfnant 1	13.26	-	-		14:28
15		-	35.73	48.99	1:38	16:06
SS 15	Chirk Castle	1.12	-	-		16:09
16A	Deeside - In	-	28.58	29.70	1:00	17:09
Saturday Totals		38.11	170.19	208.31		

Re-Start

Sunday 17 November 2013

TC	Location	SS Dist.	Liaison Dist.	Total Dist.	Target	First Car
SS		Miles	Miles	Miles	Time	Due
16D	Deeside - Out	-	-	-		08:20
RZ	Refuel (FIA Fuel) - Deeside	-	-	-		
13	<i>Distance to next refuel</i>	<i>(21.90)</i>	<i>(91.65)</i>	<i>(113.55)</i>		
17		-	65.24	65.24	2:11	10:31
SS 17	Dyfnant 2	13.26	-	-		10:34
18		-	15.84	29.10	0:59	11:33
SS 18	Penllyn	8.64	-	-		11:36
RZ	Refuel (FIA Fuel) - Corwen	-	10.56	-		
14	<i>Distance to next refuel</i>	<i>(10.27)</i>	<i>(61.14)</i>	<i>(71.41)</i>		
19		-	24.85	33.49	1:07	12:43
SS 19	Clocaenog 2	4.67	-	-		12:46
20		-	23.61	28.28	0:57	13:43
SS 20	Kinmel Park 1	1.37	-	-		13:46
21		-	0.56	1.93	0:05	13:51
SS 21	Kinmel Park 2	1.37	-	-		13:54
22		-	21.75	23.11	0:47	14:41
SS 22	Great Orme	2.86	-	-		14:44
22A	Llandudno - Holding In	-	0.93	3.79	0:10	14:54
	Llandudno - Podium					
Sunday Totals		32.16	152.79	184.96		

Sunrise	07:45
Sunset	16:15

TOTALS OF THE RALLY

	SS	Liaison	Total	%
Friday 15 November	42.58	178.08	220.66	19.3%
3 SS				% of
Saturday 16 November	38.11	170.19	208.31	Special
4 SS				Stages
Sunday 17 November	32.16	152.79	184.96	17.4%
6 SS				
Total - 13 SS	112.86	501.07	613.93	18.4%

© International Motor Sports Ltd. 2013 Not for publication without the written permission of IMS

Wales Rally GB National Itinerary (Two Day)

TC		Location	SS Dist.	Liaison Dist.	Total Dist.	Target	First Car
SS			Miles	Miles	Miles	Time	Due
9D		Deeside - Out	-	-	-		10:00
RZ		Refuel (FIA Fuel) - Deeside	-	-	-		
9		Distance to next refuel	(23.74)	(69.22)	(92.96)		
12			-	65.24	65.24	2:11	12:11
SS 12		Gartheiniog	10.07	-	-		12:14
13			-	3.98	14.04	0:27	12:41
SS 13		Dyfi	13.67	-	-		12:44
RZ		Refuel (FIA Fuel) - Ceinws	-	3.11	-		
12		Distance to next refuel	(14.38)	(97.87)	(112.24)		
14			-	36.66	50.33	1:41	14:25
SS 14		Dyfnant 1	13.26	-	-		14:28
15			-	35.73	48.99	1:38	16:06
SS 15		Chirk Castle	1.12	-	-		16:09
16A		Deeside - In	-	28.58	29.70	1:00	17:09
Saturday Totals			38.11	170.19	208.31		
Start Saturday 16 November 2013							
TC		Location	SS Dist.	Liaison Dist.	Total Dist.	Target	First Car
SS			Miles	Miles	Miles	Time	Due
16D		Deeside - Out	-	-	-		08:20
RZ		Refuel (FIA Fuel) - Deeside	-	-	-		
13		Distance to next refuel	(21.90)	(91.65)	(113.55)		
17			-	65.24	65.24	2:11	10:31
SS 17		Dyfnant 2	13.26	-	-		10:34
18			-	15.84	29.10	0:59	11:33
SS 18		Penllyn	8.64	-	-		11:36
RZ		Refuel (FIA Fuel) - Corwen	-	10.56	-		
14		Distance to next refuel	(10.27)	(59.90)	(70.17)		
19			-	23.61	32.25	1:05	12:41
SS 19		Clocaenog	4.67	-	-		12:44
20			-	23.61	28.28	0:57	13:41
SS 20		Kinmel Park 1	1.37	-	-		13:44
21			-	0.56	1.93	0:05	13:49
SS 21		Kinmel Park 2	1.37	-	-		13:52
22			-	21.75	23.11	0:47	14:39
SS 22		Great Orme	2.86	-	-		14:42
22A		Llandudno - Holding In	-	0.93	3.79	0:10	14:52
22A		Llandudno - Podium	-	-	-		
Sunday Totals			32.16	151.55	183.71		
						Sunrise	07:45
						Sunset	16:15
TOTALS OF THE RALLY							
		SS	Liaison	Total		%	
Saturday 16 November		38.11	170.19	208.31	Special Stages	18.3%	
4 SS							
Sunday 17 November		32.16	151.55	183.71		17.5%	
6 SS							
Total - 10 SS		70.28	321.75	392.02		17.9%	

© International Motor Sports Ltd. 2013 Not for publication without the written permission of IMS



Wales Rally GB National Route Map

