



# **71<sup>st</sup> Rally Poland** **71 Rajd Polski**

**Feel the Gravel**

# Rally Guide I



**WRC**  
FIA WORLD RALLY  
CHAMPIONSHIP



**Feel the Gravel**

## Feel the Gravel

### CONTENT

<b>I. INTRODUCTION / WELCOME .....2-3</b>	<b>10. HOSPITALITY ARRANGEMENTS .....13</b>
I.1. Introduction .....2	
I.2. History .....2	<b>11. HOTEL / ACCOMMODATION .....13</b>
I.3. Route .....3	
<b>2. CONTACT DETAILS .....4-5</b>	<b>12. RECONNAISSANCE</b>
2.1. Organiser's Contact Details .....4	12.1. Prohibited entry zones .....14
2.2. Rally HQ Contact Details .....4	
2.3. Rally Office Opening Hours .....4	<b>18. MEDIA .....14-15</b>
2.4. Officials of the Event .....4	18.1. Contact before the Rally .....14
2.5. Media Contact Details .....5	18.2. Media Accreditation Procedure and Deadlines .....14-15
<b>3. RALLY PROGRAMME AND CRITICAL DEADLINES .....5-7</b>	18.3. Media Center .....15
3.1. Schedule Before the Rally .....5	<b>20. LIST OF USEFUL FACTS AND SERVICES .....16-22</b>
3.2. Schedule During the Rally .....6-7	20.1. General Facts about Poland and the city of Mikolajki .....16-18
<b>4. ENTRY DETAILS .....8-9</b>	20.2. General Facts about Lithuania and the city of Druskininkai ....18-20
4.1. Titles for which the Rally Counts .....8	20.3. Visa Requirements .....20
4.2. Criteria for Acceptance of Entries .....8	20.4. Hire car companies .....21
4.3. Entry Fees .....8-9	20.5. Airline companies and airports ....22
4.4. Entry Packages for non-FIA registered teams .....9	
<b>5. SERVICE PARK AND REMOTE SERVICE ZONE .....10-11</b>	<b>APPENDIXES .....23-28</b>
5.1. Locations .....10	A) Itinerary .....23-26
5.2. Service Areas .....10	B) Maps .....27-28
5.3. Facilities .....10-11	
5.4. Security and Medical Services .....11	
5.5. Service Park Coordinator .....11	
<b>6. TWO-WAY RADIO .....11</b>	
<b>8. IMPORT OF VEHICLES AND SPARE PARTS .....12</b>	
8.1. General .....12	
<b>9. HELICOPTERS .....12</b>	
9.1. Registration Procedure .....12	
9.2. Helicopter Companies .....12	

This document has been updated  
on 23.02.2014.

**This document has no regulatory power – For information only.  
Dates, Itinerary and Regulations pending FIA approval.**

## Feel the Gravel

### I. INTRODUCTION / WELCOME

#### I.1 Introduction

Rally Poland, the second oldest rally in the world and the most prestigious motorsport event in Poland will celebrate its 71th Anniversary in 2014. LOTOS 71<sup>st</sup> Rally Poland writes the history of the FIA World Rally Championship.

For the first time the special stages of the world rally round will be held in Lithuania. In this way a new, thirty-second country will join the prestigious group of Organisers of this top level events since 1973. It has also never happened before that a world rally was run in two countries with different time zones.

LOTOS 71<sup>st</sup> Rally Poland is organized by Polish Automobile and Motorcycle Federation (PZM) in cooperation with Lithuanian Automobile Sport Federation (LASF) and Polish Automobile Club.

We have prepared 23 special stages on gravel roads, including 4 in Lithuania. Parts of them are known from 2009 edition of Rally Poland however, the Lithuanian stages will be completely new to everyone. Rally fans will also enjoy the best drivers duels at the Mikolajki Arena stage.

These spectacular stages will be run four times, twice with artificial lighting and with two cars competing at the same time. The Rally HQ will be placed in a popular tourist resort of Mikolajki.

Service Park will be located on a hard-leveled ground in the vicinity of Hotel Golebiewski situated in very heart of the Land of Great Lakes, surrounded by wonderful tourist trials.

Remote Service Park will find its place in a beautiful Druskininkai Spa in Lithuania, 47 km from the Polish-Lithuanian border.

#### I.2. History

The first edition of Polish classic was held in 1921. All competitors tackled the loop from Warsaw through Bialowieza and back to Warsaw. Tadeusz Heyne (Dodge) was the fastest among the six drivers and went down to the history of the event.

In the twenties and thirties of the XX-th century there were twelve editions of the event. Rally Poland was stopped by the II-nd World War and returned in 1947.

Since 1960 the history of Rally Poland as a round of the FIA European Rally Championship has begun and such famous names like Rauno Aaltonen, Tony Fall, Timo Makinen, Jean-Claude Andruet, Walter Rohrl, Bernard Darniche, Antonio Zanini or Sobieslaw Zasada one can find on the entry and the winners lists.

In 1973, right after the launch of the FIA World Rally Championship the event was once adopted for the series and won by Achim Warmbold co-driven by Jean Todt. Rally Poland was organized on tarmac stages in various parts of the country: in Cracow, Wroclaw, and Kłodzko.

Since 2005 the headquarters of the event is Mikolajki, north-east part of Poland. Spectacular gravel roads winding along Mazurian forests and lakes substituted the tarmac stages.

## Feel the Gravel

### I. INTRODUCTION / WELCOME

In 2009 Rally Poland – as it is well known among the drivers and rally fans – was honoured by the status of the FIA World Rally Championship round. Won by Ford's duo Mikko Hirvonen and Jarmo Lehtinen full of dramatic actions, has immediately got enthusiastic opinions and comments by the drivers, the teams and rally fans who crowded the stages in great number.

The FIA officials also appreciated organizational standards and concept of the rally.  
In 2014 FIA World Rally Championship returns to Poland.

#### ■ I.3. Route

In 2014 LOTOS 71<sup>st</sup> Rally Poland will be held in June 26-29. The total distance of the itinerary is almost 1700 km and 23 special stages being 360 km long. Rally HQ will be at the Hotel Golebiewski in Mikolajki. The Service Park will be located in the Rally Park in Mikolajki, next to Super Special Stage Mikolajki Arena.

There will be a Remote Service during LOTOS 71<sup>st</sup> Rally Poland located in center of city Druskininkai / Lithuania.

The Ceremonial Start will take place in the city center of Mikolajki on Thursday 26-th June afternoon. On the same day the rally will be run on two stages and one super special stage Mikolajki Arena with artificial lighting.

Friday, 27-th June is the Lithuanian Day in LOTOS 71<sup>st</sup> Rally Poland however, it combines the tests in both countries. On the way to Lithuania the crews will compete along one stage in Poland.

The Lithuanian part of the rally consists of 4 fast and flowing special stages, including one double-pass test located only 5 km from the Polish border. The last stage in Lithuania is one of the longest tests of the rally covering more than 34 kilometers.

After second visit to the city of Druskininkai the rally returns to Poland for additional two special stages before the return to the rally base in Mikolajki

Saturday, 28-th June will be the longest day of the event with 157 km of special stages along Mazurian forests and lakes. Eight special stages are located in the province of Warmia and Mazury, east and north-east of Mikolajki.

In addition, super special stage Mikolajki Arena will be run in the middle of the day.

Sunday, 29-th June morning the teams will compete on two stages, the same as on Thursday and super special stage Mikolajki Arena. The Power Stage located close to Rally HQ will start at 12:00 am.

## 2. CONTACT DETAILS

### 2.1. Organiser's Contact Details

**Polski Związek Motorowy**  
**PL 02-518 Warszawa**  
**ul. Kazimierzowska 66**

**Tel.: +48 22 542 01 16**  
**Fax: +48 22 848 77 77**  
**E-mail: [biuro@rallypoland.pl](mailto:biuro@rallypoland.pl)**  
**website: [www.rallypoland.pl](http://www.rallypoland.pl)**

### 2.2 Rally HQ Contact Details (from 23 till 30 June 2014)

**Hotel Gołębiewski**  
**II-730 Mikołajki**  
**ul. Mrągowska 34**

**E-mail: [biuro@rallypoland.pl](mailto:biuro@rallypoland.pl)**  
**website: [www.rallypoland.pl](http://www.rallypoland.pl)**

### 2.3. Rally Office Opening Hours

**All year:**

**Monday – Friday 08:00 – 16:00**

**During the event:**

**Monday, 23<sup>th</sup> June; 07:00 – 21:00**

**Tuesday, 24<sup>th</sup> June; 08:00 – 20:00**

**Wednesday, 25<sup>th</sup> June; 08:00 – 21:00**

**Thursday, 26<sup>th</sup> June; 07:00 – 23:00**

**Friday, 27<sup>th</sup> June; 06:00 – 23:00**

**Saturday, 28<sup>th</sup> June; 06:00 – 23:00**

**Sunday, 29<sup>th</sup> June; 06:00 – 22:00**

### 2.4. Officials of the Event

**Clerk of the Course**

**Jarosław Noworól**

**[j.noworol@rallypoland.pl](mailto:j.noworol@rallypoland.pl)**

**Deputy CoC – Chief Safety Officer**

**Piotr Burdalski**

**[p.burdalski@rallypoland.pl](mailto:p.burdalski@rallypoland.pl)**

**Deputy CoC – Sport**

**Krzysztof Maciejewski**

**[k.maciejewski@rallypoland.pl](mailto:k.maciejewski@rallypoland.pl)**

**Deputy CoC – Organisation**

**Tomasz Lisicki**

**[t.lisicki@rallypoland.pl](mailto:t.lisicki@rallypoland.pl)**

**Financial & Operational Director**

**Grzegorz Gac**

**[g.gac@rallypoland.pl](mailto:g.gac@rallypoland.pl)**

**Media Director**

**Andrzej Borowczyk**

**[a.borowczyk@rallypoland.pl](mailto:a.borowczyk@rallypoland.pl)**

**Marketing & PR Director**

**Sylvia Lewandowska**

**[s.lewandowska@rallypoland.pl](mailto:s.lewandowska@rallypoland.pl)**

**Assistant CoC – Coordinator Lithuania**

**Algis Poteliunas**

**[a.poteliunas@rallypoland.pl](mailto:a.poteliunas@rallypoland.pl)**

**Assistant CoC – Sport&Safety Lithuania**

**Sarunas Liesis**

**[s.liesis@rallypoland.pl](mailto:s.liesis@rallypoland.pl)**

**Assistant CoC – Marshals**

**Jan Makarewicz**

**[j.makarewicz@rallypoland.pl](mailto:j.makarewicz@rallypoland.pl)**

**Chief Medical Officer**

**Krzysztof Pomorski**

**[k.pomorski@rallypoland.pl](mailto:k.pomorski@rallypoland.pl)**

**Chief Scrutineer**

**Wojciech Nowak**

**[w.nowak@rallypoland.pl](mailto:w.nowak@rallypoland.pl)**

**Secretary of the Rally**

**Aleksandra Brach**

**[a.brach@rallypoland.pl](mailto:a.brach@rallypoland.pl)**

**Competitors Relations Officer**

**TBA**

**Service Park Coordinator**

**Hubert Zdziarski**

**[h.zdziarski@rallypoland.pl](mailto:h.zdziarski@rallypoland.pl)**

**Helicopter Coordinator**

**Jacek Dragić**

**[j.dragic@rallypoland.pl](mailto:j.dragic@rallypoland.pl)**

## 2. CONTACT DETAILS

### ■ 2.5. Media Contact Details

**Andrzej Borowczyk**  
**LOTOS 71<sup>st</sup> Rally Poland Media Director / Accreditation Officer**

**Phone: +48 721 527 453**

**E-mail: a.borowczyk@rallypoland.pl**

## 3. RALLY PROGRAMME AND CRITICAL DEADLINES

### ■ 3.1. Schedule Before the Rally

<b>Monday 24 February 2014</b>	<b>Issuing of Rally Guide I</b>
<b>Wednesday 23 April 2014</b>	<b>Issuing of Supplementary Regulations</b> <b>Entries opening date</b>
<b>Monday 26 May 2014</b>	<b>Closing date for entries and co-driver details</b> <b>Issuing of Rally Guide 2</b> <b>Issuing of Road-Book and maps</b>
<b>Wednesday 28 May 2014</b>	<b>Closing date for Polish and Lithuanian media accreditation</b>
<b>Monday 02 June 2014</b>	<b>Publication of entry list in seeded order</b> <b>(subject to FIA approval)</b> <b>Closing date for order of Service Park facilities</b> <b>Closing date for FIA Fuel order placing</b> <b>Closing date for Helicopter Registration</b>
<b>Tuesday 03 June 2014</b>	<b>Closing date international media accreditation</b> <b>Closing date electronic media accreditation</b>
<b>Monday 09 June 2014</b>	<b>Publication of Media Safety Plan</b>
<b>Sunday 22 June 2014</b>	<b>Opening of Service Park for Manufacturers and WRC teams</b>



## Feel the Gravel

### 3. RALLY PROGRAMME AND CRITICAL DEADLINES

#### 3.2. Schedule During the Rally week

##### Monday 23 June 2014

07:00 – 21:00	Rally Office opening hours	Rally HQ
08:00 – 18:00	Opening of Service Park for all WRC entrants	Service Park
08:00 – 16:00	Registration for Reconnaissance	Rally Office
	Administrative checks and collection of materials	Rally Office
12:00 – 16:00	Collection of Tracking Systems for Reconnaissance	TBA
16:00 – 20:00	Reconnaissance of special stages	

##### Tuesday 24 June 2014

08:00 – 20:00	Rally Office opening hours	Rally HQ
08:00 – 18:00	Opening of Service Park for all entrants	Service Park
14:00 – 20:00	Media Accreditation opening	Rally HQ
08:00 – 20:00	Reconnaissance of special stages	
TBA	Collection of FIA WRC Safety Tracker System	TBA

##### Wednesday 25 June 2014

08:00 – 21:00	Rally Office opening hours	Rally HQ
08:00 – 20:00	Media Accreditation opening	Rally HQ
08:00 – 20:00	Media Centre opening	Rally HQ
08:00 – 20:00	Reconnaissance of special stages	
09:00 – 13:00	Scrutineering incl. sealing and marking Manufacturers	TBA
14:00 – 20:00	Scrutineering incl. sealing and marking Other entrants	TBA
16:00	Team Managers Briefing Manufacturers and WRC Teams	Rally HQ
TBA	Return of Tracking Systems for Reconnaissance	TBA

##### Thursday 26 June 2014

07:00 – 23:00	Rally Office opening hours	Rally HQ
08:00 – 22:00	Media Accreditation opening	Rally HQ
08:00 – 24:00	Media Centre opening	Rally HQ
08:00 – 10:00	Shakedown P1 / P2	
10:00 – 11:30	Shakedown P3	



## Feel the Gravel

### 3. RALLY PROGRAMME AND CRITICAL DEADLINES

<b>11:30 – 13:00</b>	<b>Shakedown Other</b>	
<b>13:00</b>	<b>Helicopter Pilots Briefing</b>	<b>Rally HQ</b>
<b>14:00</b>	<b>FIA Pre-Event Press Conference</b>	<b>Rally HQ</b>
<b>15:00</b>	<b>Pre-Rally Medical briefing</b>	<b>Rally HQ</b>
	<b>Publication of start list for Ceremonial start and Section I</b>	<b>Official Notice Board</b>
<b>16:00</b>	<b>Ceremonial Start at Rally Show</b>	<b>Mikolajki Main Square</b>
<b>18:00</b>	<b>Start of Section I (Start of Rally)</b>	<b>Service Park</b>

#### Friday 27 June 2014

<b>06:00 – 23:00</b>	<b>Rally Office opening hours</b>	<b>Rally HQ</b>
<b>08:00 – 11:00</b>	<b>Media Accreditation opening</b>	<b>Rally HQ</b>
<b>08:00 – 23:00</b>	<b>Media Centre opening</b>	<b>Rally HQ</b>
<b>07:00</b>	<b>Start of Section 2</b>	<b>Service Park</b>
<b>TBA</b>	<b>Publication of start list Section 5</b>	<b>Official Notice Board</b>

#### Saturday 28 June 2014

<b>06:00 – 23:00</b>	<b>Rally Office opening hours</b>	<b>Rally HQ</b>
<b>08:00 – 22:00</b>	<b>Media Centre opening</b>	<b>Rally HQ</b>
<b>08:00</b>	<b>Start of Section 5</b>	<b>Service Park</b>
<b>TBA</b>	<b>Publication of start list Section 7</b>	<b>Official Notice Board</b>

#### Sunday 29 June 2014

<b>06:00 – 23:00</b>	<b>Rally Office opening hours</b>	<b>Rally HQ</b>
<b>07:00 – 20:00</b>	<b>Media Centre opening</b>	<b>Rally HQ</b>
<b>07:00</b>	<b>Start of Section 7</b>	<b>Service Park</b>
<b>14:00</b>	<b>Podium Ceremony and Prize Giving</b>	<b>Mikolajki Arena</b>
<b>14:30</b>	<b>FIA Post-Event Press Conference</b>	<b>Rally HQ</b>
<b>TBA</b>	<b>Final Scrutineering</b>	<b>TBA</b>
<b>TBA</b>	<b>Publication of Provisional Final Classification</b>	<b>Official Notice Board</b>

## 4. ENTRY DETAILS

### 4.1. Titles for which the Rally Counts

- FIA World Rally Championship for Drivers
- FIA World Rally Championship for Co-Drivers
- FIA World Rally Championship for Manufacturers
- FIA WRC 2 Championship for Teams
- FIA WRC 2 Championship for Drivers
- FIA WRC 2 Championship for Co-Drivers
- FIA WRC 2 Production Car Cup for Drivers
- FIA WRC 2 Production Car Cup for Co-Drivers
- FIA WRC 3 Championship for Teams
- FIA WRC 3 Championship for Drivers
- FIA WRC 3 Championship for Co-Drivers
- FIA Junior WRC Championship for Drivers
- FIA Junior WRC Championship for Co-Drivers
- DMACK Fiesta Trophy

### 4.2. Criteria for Acceptance of Entries

Entries will be limited to 70 competitors.

The criteria for acceptance of entries will be in the following order:

- FIA first priority drivers
- FIA second priority drivers
- FIA third priority drivers (Drivers entering FIA Junior Championship)
- DMACK Fiesta Trophy drivers
- Rest of the entries at Organisers sole discretion

No entry can be guaranteed before the entries closing date. After this date the Organisers will inform crews whose entry has not been accepted.

The Supplementary Regulations and Entry Form will be published on [www.rallypoland.pl](http://www.rallypoland.pl)

Those wishing to take part in LOTOS 71<sup>st</sup> Rally Poland must send Entry Form before the closing date for entries. The entry will only be accepted if accompanied by the total amount of the Entry Fee.

### 4.3. Entry Fees

Entry fees and packages for the various FIA World Rally Championships:  
According to FIA and Series Promoter agreement for the year 2014  
(FIA WRC Regulations, Appendix VI).

## 4. ENTRY DETAILS

### Other Competitors:

#### With the optional advertising proposed by the Organisers

• Legal entrants	4.000 €
• Private entrants	3.000 €
• Legal Polish and Lithuanian entrants*	3.000 €
• Private Polish and Lithuanian entrants*	2.250 €

\* To encourage local drivers to participate in the Polish and Lithuanian round of the World Rally Championship, the sponsors of the event will assume 25% of the entry fees to non-priority competitors with a Polish and Lithuanian licence.

#### Without the optional advertising proposed by the Organisers

• Legal entrants	6.000 €
• Private entrants	5.000 €
• Fees for "Only Reconnaissance"	800 €
• "Auxiliary Plate"	400 €

**Legal Entrant** – The competing car is entered by a team, a company or other legal entity (with legal entrants license).

**Private Entrant** – The competing car is entered by the driver or the co-driver.

#### ■ 4.4. Entry Packages for non-FIA registered teams

	Legal Entrants	Private Entrants
Service Park area (approx.)	100 m <sup>2</sup>	100 m <sup>2</sup>
Vehicle Plates		
Service plate	2	2
Auxiliary plate	1	0
Passes		
Team passes	10	6
Documents		
Supplementary Regulations	1 (I)	1 (I)
Road Book sets	3 (I)	2 (I)
Rally Guide 1	available only on <a href="http://www.rallypoland.pl">www.rallypoland.pl</a>	
Rally Guide 2	available only on <a href="http://www.rallypoland.pl">www.rallypoland.pl</a>	
Route Maps	5 ( I )	3 ( I )
Official Programme	5	2
Results	available only on <a href="http://www.rallypoland.pl">www.rallypoland.pl</a>	

( ) num. of copies that will be sent to the correspondence address 1 month before the start of the rally.

## Feel the Gravel

### 5. SERVICE PARK AND REMOTE SERVICE ZONE

#### 5.1. Locations

The location of the main Service Park in Mikolajki is:

GPS Coordinates: N: 53°48.239; E: 21°33.316

The Service Park is located on a hard-leveled ground with a pedestrian access to the Rally HQ.

The location of the Remote Service Zone in Druskininkai / Lithuania is:

GPS Coordinates: N: 54°01.449; E: 23°58.770

The Remote Service is located on a hard-leveled ground.

#### 5.2. Service Areas

Each team/competitor will be allocated a designated space in accordance to Appendix 6, FIA WRC 2014 regulations.

Legal and private entrants are allocated an area of 10 m x 10 m.

Teams that, due to logistics, need to stay together or having any special requests must send them by E-mail to [h.zdziarski@rallypoland.pl](mailto:h.zdziarski@rallypoland.pl).

The Organisers will make all reasonable efforts in order to satisfy the needs of all Teams.

The Joint Service Request form must be received by 02 June 2014.

No further changes will be accepted after this date.

#### 5.3. Facilities

The following services will be available for Manufacturers and WRC Teams:

- Water connection
- WC
- WIFI
- Electricity

For all Competitors:

- General lighting
- General Security
- Public WC
- Garbage containers and waste collection
- Oil removal

The following extra facilities could be ordered for use in the service area:

- WC for the team's private use
- Electricity
- WLAN
- Fork-lift & Car transport rental
- Exclusive security service for the team

## Feel the Gravel

### 5. SERVICE PARK AND REMOTE SERVICE ZONE

Teams requiring these services are requested to complete the Service Park Request form available on the rally website [www.rallypoland.pl](http://www.rallypoland.pl)

#### ■ 5.4. Security and Medical Services

The service park will have a permanent security surveillance starting from Monday, 23 June 2014.

Exclusive security service for the team can be hired through the Organisers.  
A Medical Centre will be established at the service park.

#### ■ 5.5. Service Park Coordinator

For any questions and further information please contact the Service Park Coordinator:

Hubert Zdziarski  
mobile: +48 661 515 115  
E-mail: [h.zdziarski@rallypoland.pl](mailto:h.zdziarski@rallypoland.pl)

### 6. TWO-WAY RADIO

#### ■ Poland

Permission for the use of radio transmitter must be applied for at the Polish authority in charge:



Office of Electronic Communications  
(Urząd Komunikacji Elektronicznej)  
Kasprzaka Str. 18/20  
01-211 Warsaw  
Tel: +48 22 5349190  
Fax: +48 22 5349162  
E-mail: [uke@uke.gov.pl](mailto:uke@uke.gov.pl)

#### ■ Lithuania

Permission for the use of radio transmitter must be applied for at the Lithuanian authority in charge:



Communications Regulatory Authority  
of the Republic of Lithuania  
Algirdo Str. 27A  
LT-03219 Vilnius  
Tel: +370 5 210 5633  
E-mail: [rtr@rtr.lt](mailto:rtr@rtr.lt)

## Feel the Gravel

### 8. IMPORT OF VEHICLES AND SPARE PARTS

#### 8.1. General

From the European Union.

Poland and Lithuania are the European Union members. Competitors from the European Union do not need to make any special custom clearance for temporary import of cars and equipment for the purpose of participating in the LOTOS 71<sup>st</sup> Rally Poland.

From outside the European Union

Non EU competitors will need to show their ATA carnet (obtainable from the Chamber of Commerce of the country of origin) to customs authorities at their point of entry into the European Union.

If you have any questions regarding importing the rally car, spare parts/equipment from outside the European Union please contact the Custom authorities in Poland, phone +48 33 8576251,

E-mail: [info.sluzbacelna@kat.mofnet.gov.pl](mailto:info.sluzbacelna@kat.mofnet.gov.pl), for current information and procedure.

### 9. HELICOPTERS

#### 9.1. Registration Procedure

According to FIA guidelines for helicopter use, all helicopters flying in support of the Rally must be registered with the Organisers. It is intended that, as a safety precaution, there will be a protocol to control Rally airspace and only registered aircrafts will be allowed to fly in this airspace.

The Registration form will be published on [www.rallypoland.pl](http://www.rallypoland.pl). The form has to be submitted to the event Helicopter Coordinator until Monday, 02 June 2014. The fee due to the Organisers is 1230 € (inc. VAT).

A compulsory helicopters pilots' briefing will take place at 13:00 on Thursday 26 June 2014 at Rally HQ.

#### 9.2. Helicopter Companies:

Name / Web site	E-mail	Tel.
Sky Poland <a href="http://www.skypoland.pl">www.skypoland.pl</a>	<a href="mailto:sales@skypoland.pl">sales@skypoland.pl</a>	+48 665212121
Helicopter.pl S.A. <a href="http://www.helicopter.pl">www.helicopter.pl</a>	<a href="mailto:helicopter@helicopter.pl">helicopter@helicopter.pl</a>	+48 22 5718259
LuxJet <a href="http://www.luxjet.pl">www.luxjet.pl</a>	<a href="mailto:info@luxjet.pl">info@luxjet.pl</a>	+48 668377000
Heliseco <a href="http://www.heliseco.eu">www.heliseco.eu</a>	<a href="mailto:heliseco@heliseco.pl">heliseco@heliseco.pl</a>	+48 81 7512349
General Aviation Services <a href="http://www.generalaviation.pl">www.generalaviation.pl</a>	<a href="mailto:sales@generalaviation.pl">sales@generalaviation.pl</a>	+48 22 4357688

**Feel the Gravel**

## IO. HOSPITALITY ARRANGEMENTS

The Organisers of Rally Poland have entrusted UFA Sports with the task of providing quality hospitality services. For more information please contact:

UFA Sports Sp. z o.o.  
ul. Poleczki 2I  
02-822 Warszawa / Poland

Phone: +48 22 3352287  
Mobile: +48 502 601 079  
E-mail: [hospitality@rallypoland.pl](mailto:hospitality@rallypoland.pl)

## II. HOTEL / ACCOMMODATION

### ■ Poland



Mikolajki and nearby resorts have a wide range of hotels to offer.

For accommodation please contact with the hotels directly, but do not hesitate to ask for our assistance at:  
[accommodation@rallypoland.pl](mailto:accommodation@rallypoland.pl)

Hotels and accommodation within the rally area are reserved for teams, competitors, media and sponsors.

To ensure your accommodation, please make your reservation as soon as possible.

The local tourist offices in the area may also help you with reservations.

For contact details, please visit <http://www.staypoland.com/mikolajki-hotels.asp#>

### ■ Lithuania



The official rally hotel is „Europa Royale Druskininkai”,  
Vilniaus ave. 7, Druskininkai, Lithuania.

[http://www.groupeuropa.com/europa\\_royale/hotel\\_druskininkai](http://www.groupeuropa.com/europa_royale/hotel_druskininkai)



## 12. RECONNAISSANCE

### 12.1. Prohibited entry zones

According to the 2014 FIA World Rally Championship Sporting Regulations (art. 25.3) any driver, or his co-driver, who is, or who in the last two years has been a priority driver, who has entered or intends to enter a WRC rally and who wishes to drive on any road which is or might be used as a special stage in that rally, may only do so after he has obtained the organiser's written permission.

This shall not apply when the person is known to live in the area.

The written permission must then be sent to the FIA. Failure to respect this rule shall result in the driver being reported to the Stewards.

Any driver, or his co-driver willing to move/cross the roads localized in prohibited entry zones (APPENDIX B) have to communicate their intentions in writing in advance to the Organiser by emails: [biuro@rallypoland.pl](mailto:biuro@rallypoland.pl); [k.maciejewski@rallypoland.pl](mailto:k.maciejewski@rallypoland.pl) and then obtain written permission from the Organiser.

We would also like to draw your attention to art. 66.2.5 of the 2014 FIA World Rally Championship Sporting Regulations.

Teams organising press, media or PR functions on any road which is or might be used as a special stage of any current Championship rally must first advise the FIA and the FIA Media delegate.

## 18. MEDIA

### 18.1. Contact before the Rally

Mrs Hayley Gallagher  
FIA WRC Media Delegate  
Phone: + 44 125 27 81 431  
Fax: + 44 870 11 23 179  
E-mail: [hgallagher@fia.com](mailto:hgallagher@fia.com)

Mr Andrzej Borowczyk  
LOTOS 71<sup>st</sup> Rally Poland  
Media Director / Accreditation Officer  
Phone: +48 721 527 453  
E-mail: [a.borowczyk@rallypoland.pl](mailto:a.borowczyk@rallypoland.pl)

### 18.2. Media Accreditation Procedure and Deadlines

LOTOS 71<sup>st</sup> Rally Poland Guidelines and Procedures for media accreditation are defined by the FIA and are published on the FIA website: [www.fia.com](http://www.fia.com)

Please read carefully FIA Accreditation Guidelines to ensure that all the requested information is included and that the application is forwarded to the correct organization and to the correct address.

The Media Pass is considered as a working tool and it cannot be used for public relations, promotions or entertainment purposes.

No advertising, public relation agency or similar company or organization will be accredited as media.

Nor will the rally issue any media accreditation to representatives (press officers or otherwise) of sponsors, suppliers, teams, drivers etc.

- 18.2.1. International media requests from International Publications and Websites (non Polish or Lithuanian) must be sent by FIA online system:

<http://www.fia.com/media-centre/media-accreditation>

and received no later than Tuesday, 03 June 2014.

- 18.2.2. LOTOS 71<sup>st</sup> Rally Poland implements online accreditation system for Polish and Lithuanian publications, websites and radio stations.

Media requests must be made online by means of the link placed on [www.rallypoland.pl/media](http://www.rallypoland.pl/media) and received no later than Wednesday, 28 May 2014.

Accreditation Office of LOTOS 71<sup>st</sup> Rally Poland reserves the right of being supplied by the applicant with the additional documents if required.

It should be noted that only journalists will be granted website accreditation and only one representative per website will be accredited.

- 18.2.3. Requests from Television, International Radio or any electronic media and Websites wishing to broadcast moving images

must be sent to the WRC Promoter: [rally@thesportsman.de](mailto:rally@thesportsman.de)  
and received no later than Tuesday, 03 June 2014.

Photographers not complying with the accreditation criteria (promotional and/or commercial photographers) must apply for accreditation to: [rally@thesportsman.de](mailto:rally@thesportsman.de)

- 18.3. Media Center

LOTOS 71<sup>st</sup> Rally Poland Media Center with the facilities for journalists, photographers and TV media, Accreditation Office and Manufacturers' Room will be located in:

HQ Hotel Golebiewski, II-730 Mikolajki, 34 Mragowska street.

Subsidiary Media Center is to be located in the Europa Royale Druskininkai, Vilniaus ave. 7, Druskininkai, Lithuania.

## Feel the Gravel

### 20. LIST OF USEFUL FACTS AND SERVICES

#### 20.I. General Facts about Poland and the city of Mikolajki

##### Geography

<b>Size:</b>	<b>312 679 km<sup>2</sup></b>
<b>Length:</b>	<b>649 km</b>
<b>Width:</b>	<b>689 km</b>
<b>Capital and largest city:</b>	<b>Warsaw</b>
<b>Borders:</b>	<b>Russia, Lithuania, Belarus, Ukraine, Slovakia, Czech Republic, Germany</b>
<b>Time zone:</b>	<b>GMT + 1 hour MT + 2 hours (Summer DTS)</b>

##### Climate

Poland has a moderate climate with both maritime and continental elements. This is due to humid Atlantic air which collides over its territory with dry air from Eurasian interior.

As a result, the weather tends to be capricious and the season may look quite different in consecutive years.

##### Population

<b>Size:</b>	<b>38,2 million</b>
<b>Non-Polish citizens:</b>	<b>3,3 %</b>
<b>Language:</b>	<b>Polish</b>
<b>Religion:</b>	<b>97% Roman Catholic Church</b>

##### State

<b>State:</b>	<b>Parliamentary Republic, member of EU</b>
<b>Head of State:</b>	<b>President Bronislaw Komorowski (since 2010)</b>

##### Other

<b>Currency:</b>	<b>Złoty (PLN), divided into 100 groszy</b>
<b>Notes:</b>	<b>10, 20, 50, 100 and 200 złotych</b>
<b>Coins:</b>	<b>1, 2, 5, 10, 20, 50 groszy and 1, 2, 5 złotych</b>

## Feel the Gravel

### 20. LIST OF USEFUL FACTS AND SERVICES

<b>Exchange rates:</b>	<b>1 EUR = 4,18 PLN</b> <b>1 USD = 3,10 PLN</b> <b>1 GBP = 5,08 PLN</b> For current rates please check at the National Bank of Poland website: <a href="http://www.nbp.pl">www.nbp.pl</a> Credit cards Visa, Eurocard, Mastercard are widely accepted.
<b>Health:</b>	No vaccinations are required
<b>Power:</b>	230 volts AC, the plugs are of standard European type.
<b>Telephone:</b>	Telecommunication is well developed in Poland. GSM looks like to be more popular than landline system. Polish GSM operators (T-Mobile, Plus, Orange and Play) have the agreements with the major international operators round the world.
<b>Country code:</b>	<b>48</b> The international prefix when you call from Poland is 00.
<b>Car insurance:</b>	From the 1st of May 2004 "green card" is not compulsory for European Union inhabitants and their cars.
<b>Traffic:</b>	<b>RHD</b> Safety belts compulsory in front and back seats. Speaking by mobile phone forbidden while driving (except by hand-free equipment). Never drink and drive. Alcohol limit in Poland is set at 0,02%.
<b>Maximum speed limits:</b>	urban-50 km/h (23:00-5:00 – 60 km/h), single carriage way – 90 km/h, dual carriageway and single carriageway expressway-100 km/h, dual carriageway expressway – 120 km/h, motorway – 140 km/h
<b>Be careful:</b>	Radar controls are very common. Drivers using motorways have to pay tolls. Further information concerning prices can be found at <a href="http://www.gddkia.gov.pl/en/1126/motorway-tolls">http://www.gddkia.gov.pl/en/1126/motorway-tolls</a>

More facts about Poland on [www.poland.gov.pl](http://www.poland.gov.pl)

## Feel the Gravel

### 20. LIST OF USEFUL FACTS AND SERVICES

#### The city of Mikolajki

Mazurian Pearl – as it is often called - is situated in the heart of lakes and forests, north east of Poland.

The famous sailing route of The Great Mazurian Lakes is passing through Mikolajki but the place is well known not only for yachting.

There are also excellent conditions for canoeing, ice-sailing, angling, ice-angling, windsurfing, skating, hiking, cycling or horse riding.

Walking tracks are offered by picturesque Mazurian Landscape Park which boasts about great variety of trees and plants, peat bogs, more than 200 species of birds and wild animals.

For those who are not fond of active recreation the sightseeing from a board of white fleet ship is available.

The trips from Mikolajki harbour to Gizycko, Ruciane or Popielno are on the schedule. Mikolajki and nearby resorts are famous for high standard tourist infrastructure.

Once a year the hotels and cosy restaurants are waiting for competitors, journalists and rally fans as in June Mikolajki become the capital of rallying.

#### 20.2. General Facts about Lithuania and the city of Druskininkai

##### Geography

Size:	65 300 km <sup>2</sup>
Length:	276 km
Width:	373 km
Capital and largest city:	Vilnius
Borders:	Latvia, Poland, Russia, Belarus
Time zone:	GMT + 2 hour GMT + 3 hours (Summer DTS)

##### Climate

The climate, which ranges between maritime and continental, is relatively mild. The climate of the Lithuania is typical European continental influenced climate with warm, dry summers and fairly severe winters.

The weather is often breezy and humid due to the proximity of the Baltic Sea. 20 °C (68 °F) is frequent on summer days and 14 °C (57.2 °F) at night. And -20°C (-4 °F ) occurs almost every winter.

## Feel the Gravel

### 20. LIST OF USEFUL FACTS AND SERVICES

#### Population

<b>Size:</b>	<b>2,98 million</b>
<b>Non-Lithuanian citizens:</b>	<b>15,8 %.</b>
<b>Language:</b>	<b>Lithuanian</b>
<b>Religion:</b>	<b>79% Roman Catholic Church</b>

#### State

<b>State:</b>	<b>Parliamentary Republic, member of European Union</b>
<b>Head of State:</b>	<b>President Dalia Grybauskaitė (since 2009)</b>

#### Other

<b>Visa requirements:</b>	<b>no visa is required for EU citizens</b>
<b>Currency:</b>	<b>Litas (LTL), divided into 100 centų</b>
<b>Notes:</b>	<b>10, 20, 50, 100, 200 and 500 litų</b>
<b>Coins:</b>	<b>1, 2, 5, 10, 20, 50 centu and 1, 2, 5 litai</b>
<b>Exchange rates:</b>	<b>1 EUR = 3,45 LTL</b> <b>1 USD = 2,56 LTL</b> <b>1 GBP = 4,20 LTL</b> <b>For current rates please check at the Central Bank of the Republic of Lithuania website: <a href="http://www.lb.lt">www.lb.lt</a></b> <b>Credit cards Visa, MasterCard are widely accepted.</b>
<b>Health:</b>	<b>no vaccinations are required</b>
<b>Power:</b>	<b>220-240 volts AC, the plugs are of standard European type</b>
<b>Telephone:</b>	<b>telecommunication is well developed in Lithuania.</b> <b>GSM is more popular than landline system.</b> <b>Lithuanian GSM operators (OMNITEL, Bite, TELE 2) have the agreements with the major international operators round the world.</b>
<b>Country code:</b>	<b>370</b> <b>The international prefix when you call from Lithuania is 00 or "+" (calling from GSM).</b>

## Feel the Gravel

### 20. LIST OF USEFUL FACTS AND SERVICES

<b>Car insurance:</b>	OC insurance is compulsory.
<b>Traffic:</b>	Right-hand drive. Safety belts compulsory in front and back seats. Speaking by mobile phone is forbidden while driving (except by hand-free equipment). Never drink and drive. Alcohol limit in Lithuania is set at 0,02% (driving passenger transport or heavy loads) and 0,04% (driving cars and motorcycles).
<b>Maximum speed limits:</b>	50 km/h in residential areas, 90 km/h out of town on regional roads, and 110 km/h (1 November – 31 March) or 130 km/h (1 April – 31 October) on highways.
<b>Be careful:</b>	Radar controls are very common.

More facts about Lithuania on <http://www.lietuva.lt/en/>

#### The city of Druskininkai

Druskininkai is a year-round international resort offering mineral bath, mud and climate therapies.

Mineral waters of different mineralization, similar to the well-known European mineral waters and cure mud are found in the resort.

Nature also endowed Druskininkai with mild climate, many lakes and beautiful parks and groves, where the guests can find their peace.

Since 1794 the small town that has rapidly grown into an attractive tourist center offering all the benefits of a carefree and safe vacation.

Here are several worth-visiting places: soviet sculptures museum "Gruto parkas", one of the largest Aqua-parks in Europe and Druskininkai Snow Arena – the only winter activities complex in the Baltic countries that works all year round where three skiing slopes and snowboarding park are arranged in the area of 8 hectares.

#### 20.3. Visa Requirements

Poland and Lithuania are in Schengen zone.

On 21 December 2007 passport checks were abolished on Poland's border to Germany, Czech Republic, Slovakia and Lithuania by a decision of the European Parliament.



## Feel the Gravel

### 20. LIST OF USEFUL FACTS AND SERVICES

#### ■ 20.4. Hire car companies

##### Avis

**Tel: +48 22 5726565**

**E-mail: [rezerwacje@avis.pl](mailto:rezerwacje@avis.pl)**

**Web: [www.avis.pl](http://www.avis.pl)**

##### Express Rent A Car

**Tel: +48 123 000 300**

**E-mail: [express@express.pl](mailto:express@express.pl)**

**Web: [www.express.pl](http://www.express.pl)**

##### Europcar

**Tel: +48 801 002 444**

**E-mail: [rezerwacje@europcar.pl](mailto:rezerwacje@europcar.pl)**

**Web: [www.europcar.com.pl](http://www.europcar.com.pl)**

##### Hertz

**Tel: +48 22 5001620**

**E-mail: [rezerwacje@hertz.com.pl](mailto:rezerwacje@hertz.com.pl)**

**Web: [www.hertz.com.pl](http://www.hertz.com.pl)**

##### Sixt

**Tel: 00800 121 4646**

**E-mail: [rezerwacje@sixt.pl](mailto:rezerwacje@sixt.pl)**

**Web: [www.sixt.pl](http://www.sixt.pl)**

##### TravelJigsaw

**Tel: +48 22 5111555**

**Web: [www.traveljigsaw.pl](http://www.traveljigsaw.pl)**

## Feel the Gravel

### 20. LIST OF USEFUL FACTS AND SERVICES

#### 20.5. Airline companies and airports

##### Airlines flying to Poland

• Aeroflot	<a href="http://www.aeroflot.com">www.aeroflot.com</a>
• Air France	<a href="http://www.airfrance.com">www.airfrance.com</a>
• Alitalia	<a href="http://www.alitalia.com">www.alitalia.com</a>
• British Airways	<a href="http://www.britishairways.com">www.britishairways.com</a>
• Emirates	<a href="http://www.emirates.com">www.emirates.com</a>
• Finnair	<a href="http://www.finnair.com">www.finnair.com</a>
• Iberia	<a href="http://www.iberia.com">www.iberia.com</a>
• KLM	<a href="http://www.klm.com">www.klm.com</a>
• Lufthansa	<a href="http://www.lufthansa.com">www.lufthansa.com</a>
• Norwegian	<a href="http://www.norwegian.com/">www.norwegian.com/</a>
• Polish Airlines LOT	<a href="http://www.lot.com">www.lot.com</a>
• Ryanair	<a href="http://www.ryanair.com">www.ryanair.com</a>
• SAS	<a href="http://www.sas.se/en/">www.sas.se/en/</a>
• TAP Air Portugal	<a href="http://www.flytap.com">www.flytap.com</a>
• Wizzair	<a href="http://www.wizzair.com">www.wizzair.com</a>

##### Airports

• Warsaw Chopin Airport	( <a href="http://www.lotnisko-chopina.pl">www.lotnisko-chopina.pl</a> ) 239 km from Rally HQ Mikolajki
• Warsaw Modlin Airport	( <a href="http://www.modlinairport.pl">www.modlinairport.pl</a> ) 208 km from Rally HQ Mikolajki
• Gdansk Lech Walesa Airport	( <a href="http://www.airport.gdansk.pl">www.airport.gdansk.pl</a> ) 261 km from Rally HQ Mikolajki

Service that provides live flight information for Airports in Poland is available at:  
[http://www.airlineupdate.com/content\\_public/liveflights/azworld/europe/poland.htm](http://www.airlineupdate.com/content_public/liveflights/azworld/europe/poland.htm)

## Feel the Gravel

### APPENDIX A - ITINERARY (ver. 2.0, updated on 21.04.2014)

ITINERARY ver. 2.0

Sunrise: 4:04

**Leg 1, Start (Section 1) Thursday, 26 June 2014**

TC SS	Location	SS Distance	Liaison Distance	Total Distance	Target Time	First Car Due
<b>Start of Mandatory shakedown for P1,P2 drivers only</b>						<b>8:00</b>
<b>Shakedown for P1,P2 drivers closes at 10:00</b>						
0	<b>Ceremonial Start - Mikolajki Main Square</b>					<b>15:30</b>
RZ	Refuel (FIA Fuel) - Mikolajki (1,53 km after TC 0)					
1	Distance to next refuel:	(34,28)	(134,51)	(168,79)		
1			42,66	42,66	1:07	16:37
SS-1	<b>Milki - 1</b>	<b>14,54</b>				<b>16:40</b>
2			20,77	35,31	0:47	17:27
SS-2	<b>Kruklanki - 1</b>	<b>17,24</b>				<b>17:30</b>
2A	Regroup - In		69,36	86,60	1:52	19:22
3	Regroup - Out / Mikolajki Arena - In				0:40	20:02
SS-3	<b>Super Special Stage Mikolajki Arena - 1</b>	<b>2,50</b>				<b>20:05</b>
3A	Parc Fermé & Technical Zone - In		0,85	3,35	0:15	20:20
3B	Parc Fermé - Out / Service - In		-	-	0:10	
	<b>Flexi Service A - Mikolajki</b>	(34,28)	(133,64)	(167,92)	<b>0:45</b>	
3C	Service - Out / Parc Fermé - In (early check-in allowed)		-	-		
For all classified cars (except re-starting crews) TC 3C closes at:						<b>0:00</b>
<b>Totals Leg 1 - Section 1 - 3 SS</b>		<b>34,28</b>	<b>133,64</b>	<b>167,92</b>		

Sunset: 21:09

Section 1

## Feel the Gravel

### APPENDIX A - ITINERARY (ver. 2.0, updated on 21.04.2014)

Leg 1, Re-Start (Section 2,3,4)							Sunrise: 4:05
							Friday, 27 June 2014
TC SS	Location	SS Distance	Liaison Distance	Total Distance	Target Time	First Car Due	
3D	Parc Fermé - Out / Service - In					7:00	
	<b>Service B - Mikolajki</b>	-	-	-	<b>0:15</b>		
3E	Service - Out					7:15	
RZ	Refuel (FIA Fuel) - Mikolajki (2,40 km after TC 3E)						
2	Distance to next refuel:	(12,89)	(188,69)	(201,58)			
4			97,64	97,64	1:52	9:07	
SS-4	<b>Wieliczki - 1</b>	<b>12,89</b>				<b>9:10</b>	
RZ	Remote Refuel (FIA Fuel) - Kapciamiestis (93,45 km after SS-4 finish)						
3	Distance to next refuel:	(44,58)	(74,25)	(118,83)			
5			96,01	108,90	2:12	11:22	
SS-5	<b>Kapciamiestis-Lithuania - 1</b>	<b>26,61</b>				<b>11:25</b>	
6			23,56	50,17	1:02	12:27	
SS-6	<b>Margionys-Lithuania - 1</b>	<b>17,97</b>				<b>12:30</b>	
6A	Regroup & Technical Zone - In		15,03	33,00	0:50	13:20	
6B	Regroup - Out				0:15	13:35	
6C	Service - In		0,82	0,82	0:05	13:40	
	<b>Remote Service C - Druskininkai</b>	(57,47)	(233,06)	(290,53)	<b>0:15</b>		
6D	Service - Out					13:55	
RZ	Remote Refuel (FIA Fuel) - Kapciamiestis (32,28 km after TC 6D)						
4	Distance to next refuel:	(44,58)	(74,00)	(118,58)			
7			34,84	34,84	0:42	14:37	
SS-7	<b>Kapciamiestis-Lithuania - 2</b>	<b>26,61</b>				<b>14:40</b>	
8			23,56	50,17	1:02	15:42	
SS-8	<b>Margionys-Lithuania - 2</b>	<b>17,97</b>				<b>15:45</b>	
8A	Regroup - In		15,03	33,00	0:50	16:35	
8B	Regroup - Out				0:15	16:50	
RZ	Remote Refuel (FIA Fuel) - Kapciamiestis (32,85 km after TC 8B)						
5	Distance to next refuel:	(15,39)	(220,58)	(235,97)			
9			125,08	125,08	2:22	19:12	
SS-9	<b>Wieliczki - 2</b>	<b>12,89</b>				<b>19:15</b>	
9A	Regroup - In		125,10	137,99	2:27	21:42	
10	Regroup - Out / Mikolajki Arena - In				0:15	21:57	
SS-10	<b>Super Special Stage Mikolajki Arena - 2</b>	<b>2,50</b>				<b>22:00</b>	
10A	Parc Fermé & Technical Zone - In		0,85	3,35	0:15	22:15	
10B	Parc Fermé - Out / Service - In		-	-	0:10		
	<b>Flexi Service D - Mikolajki</b>	(59,97)	(324,46)	(384,43)	<b>0:45</b>		
10C	Service - Out / Parc Fermé - In (early check-in allowed)		-	-			
	For all classified cars (except re-starting crews) TC 10C closes at:					<b>2:00</b>	
	<b>Totals Leg 1 - Section 2,3,4 - 7 SS</b>	<b>117,44</b>	<b>557,52</b>	<b>674,96</b>			

Sunset: 21:09

## Feel the Gravel

### APPENDIX A - ITINERARY (ver. 2.0, updated on 21.04.2014)

Sunrise: 4:05

**Leg 2, (Section 5,6)**

**Saturday, 28 June 2014**

TC SS	Location	SS Distance	Liaison Distance	Total Distance	Target Time	First Car Due
10D	Parc Fermé - Out / Service - In					7:15
	<b>Service E - Mikolajki</b>	-	-	-	<b>0:15</b>	
10E	Service - Out					7:30
RZ 6	Refuel (FIA Fuel) - Mikolajki (2,40 km after TC 10E) Distance to next refuel:	(36,92)	(135,29)	(172,21)		
11			16,35	16,35	0:27	7:57
<b>SS-11</b>	<b>Chmielewo - 1</b>	<b>6,75</b>				<b>8:00</b>
12			44,22	50,97	1:02	9:02
<b>SS-12</b>	<b>Stare Juchy - 1</b>	<b>14,41</b>				<b>9:05</b>
13			63,96	78,37	1:27	10:32
<b>SS-13</b>	<b>Babki - 1</b>	<b>15,76</b>				<b>10:35</b>
RZ 7	Remote Refuel (FIA Fuel) - Goldap (13,16 km after SS-13 finish) Distance to next refuel:	(50,07)	(93,66)	(143,73)		
14			22,76	38,52	0:57	11:32
<b>SS-14</b>	<b>Goldap - 1</b>	<b>35,17</b>				<b>11:35</b>
15			78,18	113,35	2:07	13:42
<b>SS-15</b>	<b>Baranowo - 1</b>	<b>14,90</b>				<b>14:05</b>
15A	Regroup & Technical Zone - In		3,48	18,38	0:30	14:35
15B	Regroup - Out / Service - In				0:15	14:50
	<b>Service F - Mikolajki</b>	(86,99)	(228,95)	(315,94)	<b>0:30</b>	
15C	Service - Out					15:20
RZ 8	Refuel (FIA Fuel) - Mikolajki (2,40 km after TC 15C) Distance to next refuel:	(36,92)	(135,29)	(172,21)		
16			16,35	16,35	0:27	15:47
<b>SS-16</b>	<b>Chmielewo - 2</b>	<b>6,75</b>				<b>15:50</b>
17			44,22	50,97	1:02	16:52
<b>SS-17</b>	<b>Stare Juchy - 2</b>	<b>14,41</b>				<b>16:55</b>
18			63,96	78,37	1:27	18:22
<b>SS-18</b>	<b>Babki - 2</b>	<b>15,76</b>				<b>18:25</b>
RZ 9	Remote Refuel (FIA Fuel) - Goldap (13,16 km after SS-18 finish) Distance to next refuel:	(37,67)	(103,88)	(141,55)		
19			22,76	38,52	0:57	19:22
<b>SS-19</b>	<b>Goldap - 2</b>	<b>35,17</b>				<b>19:25</b>
19A	Regroup - In		91,03	126,20	2:17	21:42
20	Regroup - Out / Mikolajki Arena - In				0:15	21:57
<b>SS-20</b>	<b>Super Special Stage Mikolajki Arena - 3</b>	<b>2,50</b>				<b>22:00</b>
20A	Parc Fermé & Technical Zone - In		0,85	3,35	0:15	22:15
20B	Parc Fermé - Out / Service - In				0:10	
	<b>Flexi Service G - Mikolajki</b>	(74,59)	(239,17)	(313,76)	<b>0:45</b>	
20C	Service - Out / Parc Fermé - In (early check-in allowed)					
	For all classified cars (except re-starting crews) TC 20C closes at:					<b>2:00</b>
	<b>Totals Leg 2 - Section 5,6 - 10 SS</b>	<b>161,58</b>	<b>468,12</b>	<b>629,70</b>		

Sunset: 21:08

Section 5

Section 6

## Feel the Gravel

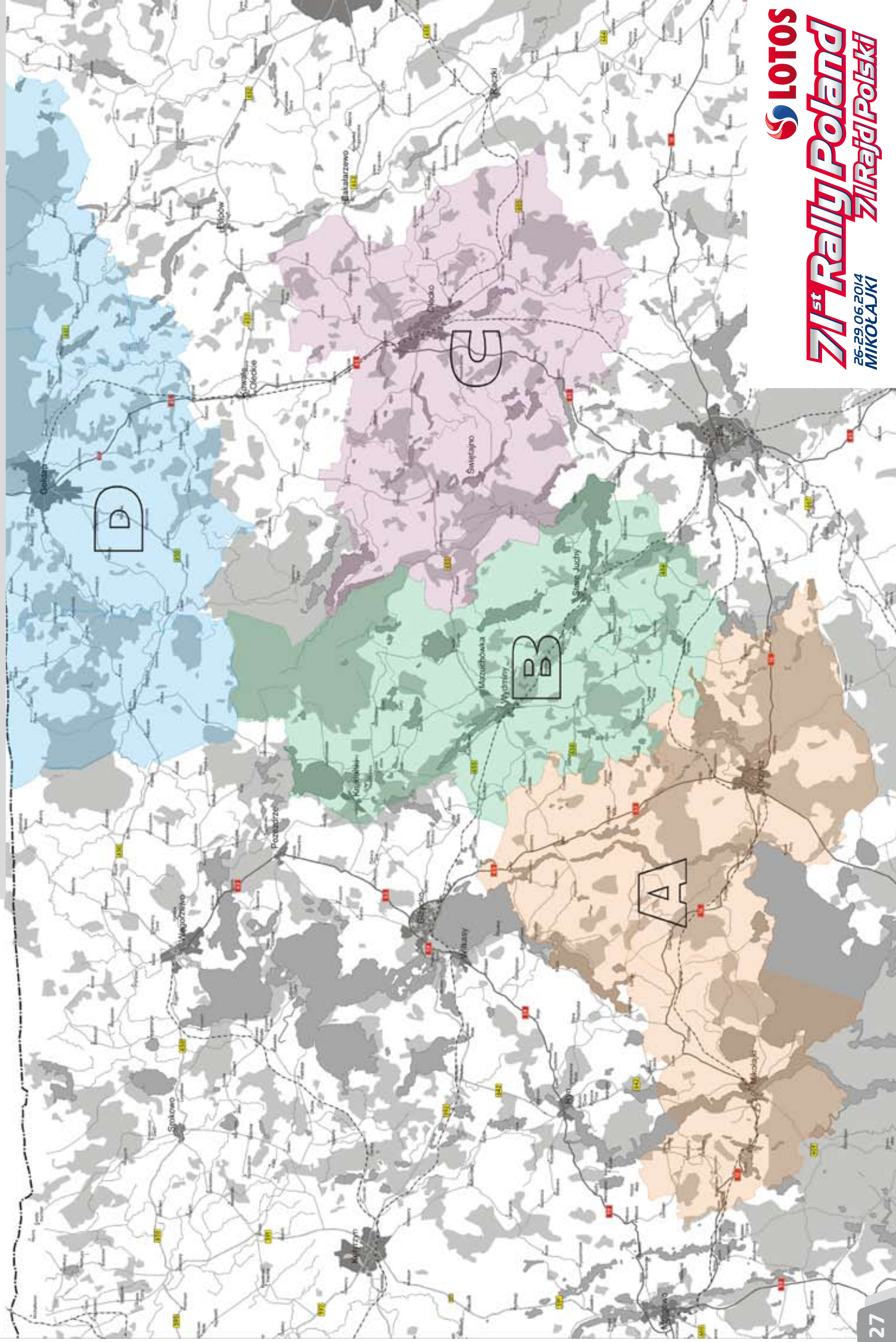
### APPENDIX A - ITINERARY (ver. 2.0, updated on 21.04.2014)

Leg 3, (Section 7,8)						
Sunday, 29 June 2014						
TC	Location	SS Distance	Liaison Distance	Total Distance	Target Time	First Car Due
20D	Parc Fermé - Out / Service - In					7:00
	<b>Service H - Mikolajki</b>	-	-	-	<b>0:15</b>	
20E	Service - Out					7:15
RZ	Refuel (FIA Fuel) - Mikolajki (2,40 km after TC 20E)					
10	Distance to next refuel:	(31,78)	(79,60)	(111,38)		
21			43,64	43,64	0:57	8:12
SS-21	<b>Milki - 2</b>	<b>14,54</b>				<b>8:15</b>
22			20,77	35,31	0:45	9:00
SS-22	<b>Kruklanki - 2</b>	<b>17,24</b>				<b>9:03</b>
RZ	Remote Refuel (FIA Fuel) - Gizycko (17,59 km after SS-22 finish)					
11	Distance to next refuel:	(17,40)	(73,00)	(90,40)		
22A	Regroup - In		69,53	86,77	1:46	10:49
23	Regroup - Out / Mikolajki Arena - In				0:10	10:59
SS-23	<b>Super Special Stage Mikolajki Arena - 4</b>	<b>2,50</b>				<b>11:02</b>
23A	Regroup & Technical Zone - In		0,85	3,35	0:10	11:12
23B	Regroup - Out				0:30	11:42
24			15,53	15,53	0:20	12:02
SS-24	<b>Baranowo - 2 (Power Stage)</b>	<b>14,90</b>				<b>12:05</b>
24A	Regroup & Technical Zone - In		3,48	18,38	0:52	12:57
24B	Regroup - Out / Service - In				0:03	13:00
	<b>Service I - Mikolajki</b>	(49,18)	(153,80)	(202,98)	<b>0:10</b>	
24C	Service - Out					13:10
24D	Finish - Holding IN		1,20	1,20	0:20	13:30
	<b>Podium Ceremony - Mikolajki Arena</b>					<b>14:00</b>
<b>Totals Leg 3 - Section 7,8 - 4 SS</b>		<b>49,18</b>	<b>155,00</b>	<b>204,18</b>		

Sunset: 21:08

Totals of The Rally				
Summary	SS	Liaison	Total	%
Leg 1 (Sections 1,2,3,4) - 10 SS	151,72	691,16	842,88	18,0%
Leg 2 (Sections 5,6) - 10 SS	161,58	468,12	629,70	25,7%
Leg 3 (Sections 7,8) - 4 SS	49,18	155,00	204,18	24,1%
<b>Overall - 24 SS</b>	<b>362,48</b>	<b>1314,28</b>	<b>1676,76</b>	<b>21,6%</b>



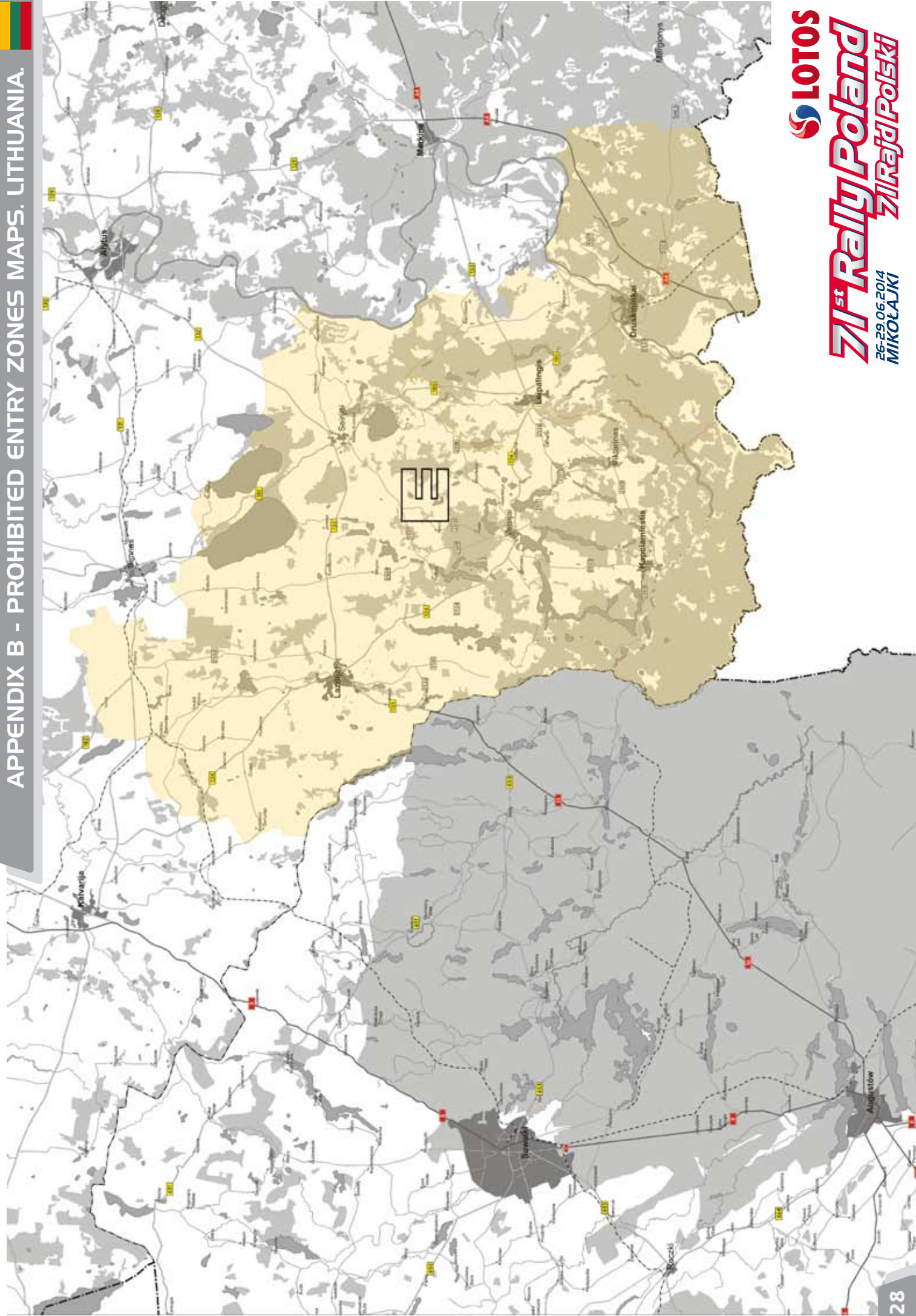


**71<sup>st</sup> Rally Poland**  
**71 Rajd Polski**  
 26-29.06.2014  
 MIKOŁAJKI





APPENDIX B - PROHIBITED ENTRY ZONES MAPS. LITHUANIA.





**71<sup>st</sup> Rally Poland**  
26-29.06.2014  
MIKOŁAJKI **71 Rajd Polski**

**Feel the Gravel**



WRC.COM