



13-16 NOVEMBER 2014

# WALES RALLY GB

RALLY OF LEGENDS



## RALLY GUIDE 1

Wales – Host Country



wrc.com

@WALESRALLYGB

/WALESRALLYGB

# WALESRALLYGB.COM



## Contents

1.	Welcome .....	2
2.	Contact Details .....	4
3.	Programme and Critical Deadlines .....	5
4.	Entry Details .....	6
5.	Service Park .....	8
6.	Two-way Radio.....	9
7.	Import of Vehicles and Spare Parts.....	9
8.	Helicopters.....	10
9.	Spectator Tickets and Hospitality .....	10
10.	Accommodation .....	12
11.	Media.....	12
12.	Useful Services .....	13
Appendix 1 Itineraries and Maps.....		15
Appendix 2 Wales Rally GB National .....		24

## Forms

All Forms can be found in the Competitors section of [www.walesrallygb.com](http://www.walesrallygb.com)

This document has no regulatory power. It is for information only.

## 1. Welcome

Croeso cynnes iawn - a warm welcome to Wales Rally GB, one of the UK's leading motorsports events - and a welcome back to north Wales. I'm delighted that the return of the Rally to north Wales proved to be such a success with both spectators and competitors alike.

We look forward to building on the success of last year's revitalised event which provided the region with a multi-million pound boost, attracted thousands of spectators and was watched by 600 million viewers world wide. I'm sure that the 2014 event will be just as legendary.

It's widely recognised that Wales has some of the finest rally stages anywhere in the world. The spectacular scenery and landscapes of north Wales will again provide the perfect backdrop for Wales Rally GB. RallyFest stages set against stunning backdrops such as Chirk Castle proved to be a big hit and extended the appeal of the Rally.

The Welsh Government's support for the Rally also shows our continued commitment to Wales Rally GB, which has significant links with the automotive sector in Wales. Wales is home to around 150 component and systems manufacturing companies and has 15,000 people employed in automotive manufacturing with an annual turnover of £3 billion.

Enjoy your time in Wales and at the Rally of Legends, and I hope you find time to visit some of the outstanding attractions our country has to offer while you're here.



Edwina Hart  
Minister for the Economy, Science and Transport  
Welsh Government



Visit: [www.walesrallygb.com](http://www.walesrallygb.com) and [www.visitwales.co.uk/major-events](http://www.visitwales.co.uk/major-events)



Welcome to Wales Rally GB, one of the most legendary and historic events on the FIA World Rally Championship calendar.

Last year's move to a new base in north Wales proved to be a huge success with competitors and fans. We are now building on what was achieved in 2013 and are confident that this year's event won't just be a fitting finale to the 2014 WRC campaign but will also be one of the most exciting, testing and attractive on the WRC calendar.

Teams, once again, will be headquartered in the highly praised new Service Park in Deeside. However, far from resting on our laurels, we have further refined the competitive route into a more compact three-day schedule comprising all the classic ingredients that make Wales Rally GB so special.

The majority of the timed sections are set on some of the world's finest rally tracks in the Welsh forests. And two stages held in darkness on Saturday evening will further increase both the challenge and the spectacle.

After a ceremonial start at the Eirias Park Stadium in Colwyn Bay, the action heads off early Friday morning on familiar Wales Rally GB territory in mid-Wales. A long, demanding day features double runs through the well-known Gartheiniog, Dyfi, Hafren Sweet Lamb and Maesnant stages, either side of a remote service in central Newtown.

Saturday's action is closer to Deeside, including two spectacular stages in the famous Clocaenog forest plus morning and afternoon runs through Aberhirnant and Dyfnant - the final two after sunset. Before that the cars return to the mid-day service in Deeside via historic Chirk Castle for the first of two fan-friendly RallyFest stages.

Sunday includes another RallyFest Stage - this time at Kinmel Park - plus two stunning new stages in north Wales: Alwen and Brenig. The final run through the breathtaking scenery of Brenig is the event's dramatic, concluding PowerStage. The winners of this gruelling rally will then be crowned at the finishing ceremony on Mostyn Street in Llandudno.

It all adds up to 23 Special Stages and 191-miles (308kms) of fiercely fought competition and what we are sure will be a brilliant conclusion to this year's globe-trotting FIA World Rally Championship.

Ensuring those competing in the Wales Rally GB National Rally also benefit from the WRC experience, its route shadows the international event. What's more, by popular demand, the teams are also based in Deeside and will have the option to participate in the official opening ceremony.

Last season's Wales Rally GB was widely hailed as the best for many years. Now, thanks to these well-conceived refinements, this year's event is all set to be even better. Enjoy!

Alan Gow  
Chairman  
The Motor Sports Association



## 1.2 Route Changes for 2014

- There will be a Ceremonial Start on Thursday evening at Eirias Park Stadium, Colwyn Bay.
- There are no stages on Thursday.
- The Shakedown stage will be located at a new venue in Clocaenog Forest.
- There is a midday service at the main Deeside Service Park on Saturday.
- Aberhirnant 2 and Dyfnant 2 on Saturday night will be run in darkness.
- All stages will be run twice on the same day with the exception of Chirk which will be run once.

## 2. Contact Details

### 2.1 Permanent Contact Details

Wales Rally GB  
Motor Sports House  
Riverside Park  
Colnbrook  
SL3 0HG  
UK

Telephone: +44 (0)1753 765100  
Fax: +44 (0)1753 765106  
Email: rallyoffice@walesrallygb.com  
Website: www.walesrallygb.com

### 2.2 Key Officials

Event Co-ordinator	Andrew Kellitt	akellitt@walesrallygb.com
Clerk of the Course	Fred Gallagher	fgallagher@walesrallygb.com
Entries Coordinator	Katie Holloway	kholloway@walesrallygb.com
Secretary to the Event	Penny Deal	pdeal@walesrallygb.com
Marketing Manager	Helen Waight	hwaight@walesrallygb.com

### 2.3 Rally Headquarters

Rally Headquarters will be operational from Monday 10 November - Sunday 16 November.  
Rally HQ - Wales Rally GB  
Toyota Engine Manufacturing Division  
Tenth Avenue  
Deeside Industrial Estate  
CH5 2TW  
UK

### 2.4 Media Contact Details

Jonathan Gill  
National Press Officer - Wales Rally GB  
High Barn  
High Barn Road  
Effingham  
KT24 5PR  
UK

Telephone: +44 (0)1372 414120  
Mobile: +44 (0)7860 563000  
Email: jonathan.gill@mpacreative.com





### 3. Programme and Critical Deadlines

#### 3.1 Schedule Before the Rally Week

##### **Wednesday 10 September**

Supplementary Regulations issued and entries open

##### **Monday 13 October**

Closing date for entries

##### **Tuesday 14 October**

Road Books, Route Map and Rally Guide 2 available

##### **Wednesday 15 October**

Closing Date for UK Print Media, Internet Media, Radio & Photographers Media Accreditation

##### **Thursday 23 October**

All priority drivers must notify Vital Equipment Ltd of their fuel requirements

##### **Monday 27 October**

Closing date for return of Service Park Forms

#### 3.2 Schedule During the Rally Week

##### **Monday 10 November**

09.00 Service Park opens - Deeside

09.00 - 18.00 Rally Office open - Rally HQ, Deeside

14.00 - 18.00 Media Accreditation (for recce only) - Media Centre, Deeside

16.00 - 19.00 Collection of Reconnaissance trackers (nominated drivers only) - Cann Office Hotel, Llangadfan, SY21 0PL N52 41.121 W3 27.772

##### **Tuesday 11 November**

07.30 - 16.30 Reconnaissance - Day 1

09.00 - 18.00 Rally Office open - Rally HQ, Deeside

09.00 - 18.00 Administrative Checks for P1 & P2 drivers (by appointment) - Rally HQ, Deeside

13.00 - 18.00 Collection of FIA WRC Safety Trackers - Deeside

14.00 - 18.00 Media Accreditation open - Deeside

14.00 - 18.00 Media Centre open - Deeside

##### **Wednesday 12 November**

07.30 - 16.30 Reconnaissance - Day 2

08.00 - 20.00 Media Centre open - Deeside

09.00 - 20.30 Rally Office open - Rally HQ, Deeside

09.00 - 16.00 Administrative Checks for P1 & P2 drivers (by appointment) - Rally HQ, Deeside

10.00 - 13.00 Certification/Component Sealing for Manufacturers & WRC Teams - Deeside

10.00 - 16.00 Media Accreditation open - Deeside

13.00 - 14.00 Weight & sound checks for Manufacturers & WRC Teams - Deeside

15.00 - 20.00 Scrutineering/Component Sealing for P2, P3 & Non-Priority drivers - Deeside College, Connah's Quay, Deeside

16.00 Team Managers' meeting - Rally HQ, Deeside

16.00 - 18.00 Return of reconnaissance trackers - Rally HQ, Deeside

16.00 - 20.00 Administrative Checks for P3 and Non-Priority drivers - Rally HQ, Deeside

20.00 Publication of Start Lists for Ceremonial Start & Section 1 - Rally HQ, Deeside

#### **Thursday 13 November**

- 07.00 - 20.30 Rally Office open - Rally HQ, Deeside
- 07.00 - 22.00 Media Centre open - Deeside
- 08.00 - 18.00 Media Accreditation open - Deeside
- 08.00 - 10.00 Shakedown for Priority 1 & 2 drivers - Clocaenog
- 10.00 - 12.00 Shakedown for Priority 3 drivers - Clocaenog
- 12.00 - 14.00 Shakedown for Non Priority drivers - Clocaenog
- 14.00 FIA Pre Event Press Conference - Media Centre, Deeside
- 19.00 Ceremonial Start - Colwyn Bay

#### **Friday 14 November**

- 05.30 Start of Section 1 - Deeside
- 07.00 - 22.00 Media Centre open - Deeside
- 07.30 - 20.00 Rally Office open - Deeside
- 20.00 Publication of Start List for Section 3 - Rally HQ, Deeside
- 21.30 End of Section 2 - Deeside

#### **Saturday 15 November**

- 06.30 Start of Section 3 - Deeside
- 07.00 - 21.00 Rally Office open - Deeside
- 07.00 - 22.00 Media Centre open - Deeside
- 21.00 Publication of Start List for Section 5 - Rally HQ, Deeside
- 23.15 End of Section 4 - Deeside

#### **Sunday 16 November**

- 07.00 - 22.00 Media Centre open - Deeside
- 07.05 Start of Section 5 - Deeside
- 07.30 - 20.00 Rally Office open - Deeside
- 13.20 Finish Ceremony and Prize-giving - Llandudno
- 16.00 FIA Press Conference - Deeside
- 16.00 Final Scrutineering - Deeside College, Connah's Quay, Deeside
- 18.00 Provisional results published - Deeside

## **4. Entry Details**

### **4.1 Titles for which the rally counts**

- FIA World Rally Championship for Manufacturers
- FIA World Rally Championship for Drivers
- FIA World Rally Championship for Co-Drivers
- FIA WRC 2 Championship for Teams
- FIA WRC 2 Championship for Drivers
- FIA WRC 2 Championship for Co-drivers
- FIA WRC 2 Production Car Cup for Drivers
- FIA WRC 2 Production Car Cup for Co-drivers
- FIA WRC 3 Championship for Teams
- FIA WRC 3 Championship for Drivers



FIA WRC 3 Championship for Co-drivers  
 FIA Junior WRC Championship for Drivers  
 FIA Junior WRC Championship for Co-drivers

## 4.2 Entry fees

### Manufacturer Team

Entry Fee for 2 cars €36,345 + VAT at 20% = **€43,614**

### WRC Team

Entry Fee for 1 car €6,625 + VAT at 20% = **€7,950**

Entry Fee for 2 cars €13,255 + VAT at 20% = **€15,906**

### Additional WRC car(s) serviced by a Manufacturer or WRC Team

Entry Fee for 1 car €6,625 + VAT at 20% = **€7,950**

### Support Championships

WRC2 / WRC3 €3,895 + VAT at 20% = **€4,674**

### With the optional advertising proposed by the organisers (per entry)

Amateurs £2,229.17 (Sterling) + VAT at 20% = **£2,675**

British Amateurs £1,250.00 (Sterling) + VAT at 20% = **£1,500**

Others £3,960.00 (Sterling) + VAT at 20% = **£4,752**

### Without the advertising proposed by the organisers (per entry)

Amateurs £4,458.33 (Sterling) + VAT at 20% = **£5,350**

British Amateurs £2,500.00 (Sterling) + VAT at 20% = **£3,000**

Others £5,100.00 (Sterling) + VAT at 20% = **£6,120**

## 4.3 Entry Packages

Manufacturers, WRC Teams and Support Championships - WRC Regulations Appendix VI.

Other entries:

	Others	Amateurs/British Amateurs
<b>Vehicle Plates</b>		
Guest	4	2
Service	2	2
Auxiliary	1	0
<b>Passes</b>		
Guest	8	6
Service	10	6
<b>Administration</b>		
Road Books	3 (1)	1 (1)
Rally Guide 2	2 (1)	2 (1)
Route maps	4 (2)	2 (2)
Programme	4	4

( ) Number of copies to be mailed/couriered to the Team Manager



## 4.4 Criteria for Acceptance of Entries

The maximum number of entrants will be 75 cars. If more than 75 entries are received the acceptance of entries will be at the discretion of the organisers. A reserve list of a maximum of 10 cars will be created.

To enable amateur crews to have the maximum time to prepare for the event, the first 30 eligible amateur entries received will automatically be accepted. The full entry fee must accompany the entry and this can be paid by credit card, cheque or bank transfer.

To be eligible for the Amateur category and entry fee:

- neither crew member may be entered on any priority list by the FIA or MSA for rallies in 2014.
- the vehicle is not the property of a motor manufacturer or importer.
- the entrant does not receive support from a motor manufacturer or importer or related sponsor.
- the vehicle must be entered by one of the crew members.

To be eligible for the British Amateur entry fee:

The conditions for the Amateur category above apply, plus the following

- both driver and co-driver must hold a British passport.
- both driver and co-driver must hold a competition licence issued by the MSA.
- both driver and co-driver must be listed on the entry list as British.

The organiser's decision on eligibility for these categories will be final.

## 5. Service Park

### 5.1 Location

The Service Park will be located in the grounds of the Toyota Engine Manufacturing Plant in Deeside Industrial Estate, Flintshire. The postcode for this location is CH5 2TW; the GPS reference is N53 13.990 W3 01.291. Service areas will be on a surface of level hardcore.

The Service Park will be open from 09.00 on Monday 10 November. Earlier access may be possible by prior arrangement with the organisers. Security will be provided on site from Monday 10 November until Monday 17 November. If you require any additional private security on site please contact the Rally Office.

### 5.2 Facilities

The following facilities will be provided at various points around the service park:

- Toilets
- Waste Removal / Hazardous Waste Collection
- Water
- Lighting
- WiFi

The following can be provided - an order form for this can be found at [www.walesrallygb.com](http://www.walesrallygb.com):

- Private Toilets
- Waste Removal
- Water Supply

Competitors who wish to use a joint service area with other competitors must complete the service park form available at [www.walesrallygb.com](http://www.walesrallygb.com).

Generators are permitted in the Service Park however these must be super silent diesel or LPG. Generators must be fenced off to restrict access to competent personnel only.

**NO PETROL GENERATORS ARE PERMITTED ON THE SITE AT ANY TIME.**

Non-priority drivers will be allocated a service area space of 10m x 10m.

Additional service space required may be available, dependant on requirements, at a cost of £30 per extra sq. metre + VAT.



## 6. Two-way Radio

### 6.1 Application Procedure

Ofcom is the regulator for the UK communications industries, with responsibilities across television, radio, telecommunications and wireless communications services. Any radio equipment used by a competitor and/or the associated support teams in the UK, must be covered by a licence issued by Ofcom.

Its operation must be strictly within the terms and conditions of the licence. The installation or use of equipment without a licence, or outside the terms, renders the operator/installer liable to prosecution. Upon conviction the equipment is liable to forfeiture together with fines and/or imprisonment.

Should you have any enquiries about your frequency or equipment requirements please contact:

Ofcom

Riverside House

2a Southwark Bridge Road

London

SE1 9HA

Telephone: +44 (0)20 7981 3000

Fax: +44 (0)20 7981 3333

Email: [contact@ofcom.org.uk](mailto:contact@ofcom.org.uk)

Website: [www.ofcom.org.uk](http://www.ofcom.org.uk)

### 6.2 Scrutineering

To ensure that illegal equipment (or unauthorised frequencies) are not used during the rally, Ofcom staff will be inspecting competitors' radio equipment at the pre-event scrutineering and will also be present throughout the event itself to monitor and check radio equipment in the rally cars and service vehicles.

### 6.3 Airborne and Other Requirements

If your requirements are not met by the above, particularly if you require airborne use, exclusive channels or continuous carrier, you should contact JFMG Ltd who distribute Programme Making and Special Events licences on behalf of the Secretary of State.

Any applications should be received a month prior to the Rally.

JFMG Ltd

33-34 Alfred Place

London

WC1E 7DP

Telephone: +44 (0)20 7299 8660

Fax: +44 (0)20 7299 8661

Email: [admin@jfmfg.co.uk](mailto:admin@jfmfg.co.uk)

Website: [www.jfmfg.co.uk](http://www.jfmfg.co.uk)

## 7. Import of Vehicles and Spare Parts

### 7.1 Competitors from the European Union

Competitors coming from the European Union do not need to make any special customs clearance. They may use any vehicle in Great Britain for up to 6 months, provided that the vehicle is not brought with the intention of selling it.

All vehicles need to have valid traffic insurance.

Tyres and spare parts can also be imported without clearance.

### 7.2 Competitors from outside the European Union

Competitors coming from outside the European Union will have to report to customs on their arrival in Great Britain. Please prepare a list of all the tools and equipment you are bringing with you.

Please contact the Customs Service for detailed information.

Telephone +44 (0)20 8929 0152

Website: [www.hmrc.gov.uk](http://www.hmrc.gov.uk)

## 8. Helicopters

### 8.1 Procedure

Full details of the procedures regarding the flying of helicopters during Wales Rally GB will be available from the Rally Office and at [www.walesrallygb.com](http://www.walesrallygb.com).

## 9. Spectator Tickets and Hospitality

### 9.1 Spectator Tickets

November's route will feature a more compact and fan-friendly three-day schedule comprising all the classic ingredients that make Wales Rally GB such a fitting finale to the season-long FIA World Rally Championship.

All tickets and passes are now on sale for the 2014 Wales Rally GB. All advance tickets have been held at 2013 prices and are strictly subject to availability.

- World Rally Passes (£99) provide access to all 23 special stages including the RallyFests at both Chirk Castle and Kinmel Park, plus the pre-event Shakedown on Thursday.
- Available at £33 for Friday and Saturday and £25 for Sunday, Forest Passes also provide considerable savings. They give access to all forest stages on a given day but do not give access to the two RallyFest stages at Chirk Castle and Kinmel Park.
- RallyFest Tickets cost just £25 with significant discounts available for families (two adults and two children go for £42) but must be purchased in advance of the event.
- On-the-day tickets for individual forest stages will be priced at £20 - or £25 for the combined Alwen and Brenig stages on Sunday.
- Kids aged 9-15 years old go for just £1 to all 23 stages when accompanied by a full-paying adult with those aged eight and under admitted free.
- All adult tickets - whether purchased in advance or on the gate - will also include a free copy of the official programme worth £9.
- Access to the central Service Park in Deeside, the Remote Service Area at Newtown, the Ceremonial Start in Eirias Park, Colwyn Bay and the Ceremonial Finish in Llandudno will be free of charge.

Terms and conditions apply to all ticket prices.

How to buy tickets:

- Online at [www.walesrallygb.com](http://www.walesrallygb.com)
- Call 0844 847 2251 (max 8 tickets per transaction) open 24 hours a day, 7 days a week, calls charged at Local Call Rate. Groups of 9 or more should call 0844 844 9990. Overseas callers should dial: +44 161 425 7560 and overseas callers looking to book for groups of 9 or more should call +44 161 425 7561.

For the latest news and updates follow Wales Rally GB on Twitter @walesrallygb, join the conversation at [facebook.com/walesrallygb](https://facebook.com/walesrallygb) or visit the website [walesrallygb.com](http://walesrallygb.com)

### 9.2 Official VIP Hospitality

2014 Wales Rally GB offerings will include some of the finest in-stage hospitality available during the World Rally Championships.

At various VIP viewing points along the route we have created a perfect opportunity to see the thrills & spills of world class motorsport whilst enjoying the benefits of first class hospitality, all provided by corporate hospitality specialist MatchPoint.

#### Hafren Sweet Lamb In-Stage Experience - Friday 14th November

The Sweet Lamb Rally Complex is set in magnificent scenery in the heart of Mid-Wales, the centre of the UK rallying scene. This stage attracts the largest crowds of the rally and benefits from live commentary and big screen action which creates an exhilarating atmosphere.

The official hospitality offers spectacular views of the rally stage where you will watch the WRC and National cars traverse a deep water splash, jumps and hairpin bends before crossing the flying finish.



Guests will be treated to morning coffee and bacon rolls on arrival followed by a three course lunch between the two runs.

Your Hospitality Experience includes:

- Stage admission pass
- Bacon rolls and pastries from 8.30am
- Buffet lunch with locally sourced produce
- Selected fine wines, beer and soft drinks
- Teas and coffee throughout the day
- VIP parking
- Complimentary programme per guest
- VIP viewing location with 180° view
- Live commentary and big screen
- Prize Draw
- Event hostesses in attendance

Price: £239 + VAT per person

#### **Chirk Castle In-Stage Experience - Saturday 15th November**

Chirk Castle is a 700 year old fortress used for the first time as a stage on Wales Rally GB last year. Now owned by the National Trust, the castle commands fine views over the surrounding countryside and provides a stunning backdrop for Saturday's hospitality venue.

After watching the International WRC cars, enjoy a three course lunch inside the magnificent castle followed by the running of the National field.

Your Hospitality Experience includes:

- Stage admission pass
- VIP Access to Chirk Castle from 11.00am
- 3 course lunch
- Selected fine wines, beers and soft drinks
- Tea and coffee throughout the day
- Hospitality parking
- Private viewing area
- Access to RallyFest areas
- Complimentary programme per guest
- Prize draw
- Event hostesses in attendance

Prices: £299 per person + VAT. Limited places available at Chirk Castle

#### **Kinmel Park In-Stage Experience, Kinmel Arms - Sunday 16th November**

Used in 2013 for the first time since the 1970s, the rally route at Kinmel Park is a fast stage using the tracks around the old Victorian house and over rolling parkland, providing fantastic viewing opportunities to see the cars for long periods of time, as well as stunning views of the north Wales coastline.

The Kinmel Park hospitality experience starts with a champagne brunch in the Kinmel Arms, before access to a VIP viewing area to watch the WRC and National cars both use the stage twice in quick succession.

Your Hospitality Experience includes:

- Stage admission pass
- VIP Access to Kinmel Arms from 9.15am
- Tea and coffee on arrival
- Champagne Welsh brunch
- VIP parking
- VIP viewing area
- Live commentary
- Access to RallyFest areas
- Complimentary programme per guest
- Prize draw
- Event hostess in attendance

Price: £189 per person + VAT

For further information or to book please contact MatchPoint:

Tel: +44 (0)2920 022838

Email: [walesrallygb@matchpoint.co.uk](mailto:walesrallygb@matchpoint.co.uk)

[www.walesrallygb.com/hospitality](http://www.walesrallygb.com/hospitality)

## 10. Accommodation

Media Travel has been appointed the official accommodation provider for the Wales Rally GB for the third continuous year.

Their team will be managing accommodation requirements for event organisers, competitors, media and spectators alike.

Media Travel is a specialist travel management company which provides a totally tailored service to meet the individual needs and demands of clients in the motorsports industry. As a full travel management service they also provide assistance with flights and ground transport for the rally, whether travelling from inland or overseas.

They work closely with a trusted network of partner hotels, airlines, car hire firms, ferry companies, rail operators, and offer event rates to their clients.

For further information, or to book, please contact Deanne or Carol:

Tel: +44 (0)207 501 1888

Email: [walesrallygb@mediatravel.com](mailto:walesrallygb@mediatravel.com)

[www.mediatravel.com](http://www.mediatravel.com)

## 11. Media

### 11.1 Contact Details Before the Rally

Jonathan Gill

National Press Officer - Wales Rally GB

High Barn

High Barn Road

Effingham

KT24 5PR

UK

Telephone: +44 (0)1372 414120

Mobile: +44 (0)7860 563000

Email: [jonathan.gill@mpacreative.com](mailto:jonathan.gill@mpacreative.com)

### 11.2 Accreditation Procedure and Criteria

Wales Rally GB is round 13 of 13 of the 2014 FIA World Rally Championship and has to apply strict criteria for media accreditation set out by the FIA, the international governing body of motor sport.

Please read the following guidelines carefully and make sure all the information requested is supplied with your accreditation application and it is posted to the appropriate address.

Failure to supply the requested information, or to sign the disclaimer, will delay the processing of your application.

Accreditation provides access to the media facilities in Rally HQ and the Service Park in Deeside and designated areas in Special Stages.

News and information can be supplied, free of charge, before, during and after the event to journalists and publications who are unable to attend the rally, or do not qualify for accreditation.

If you need help with your application please contact:

Jonathan Gill, National Press Officer

Tel: +44 (0) 1372 414120

Email: [jonathan.gill@mpacreative.com](mailto:jonathan.gill@mpacreative.com)

#### 1. International Print Media & Photographers

Requests from International publications must be sent to the FIA Communications Department using the new online international rally-by-rally accreditation system on [www.fia.com](http://www.fia.com). International accreditation opens on 17 September and closes on 22 October.

#### 2. Accreditation Applications from all Television Broadcasters

Requests from TV broadcasters should be sent directly to The WRC Promoter GmbH:  
[rally@thesportsman.de](mailto:rally@thesportsman.de)



### **3. Commercial Photographers**

Requests from all commercial photographers should go directly to the WRC Promoter GmbH: rally@thesportsman.de. Applications should be submitted by Wednesday 15th October 2014 to allow time for approval.

### **4. United Kingdom Print Media, Internet Media, Radio & Photographers**

Requests from the above must be sent by POST direct to the Wales Rally GB Accreditation Manager, using the form which can be downloaded from [www.walesrallygb.com](http://www.walesrallygb.com).

Wales Rally GB is allowed to nominate national/local radio stations to broadcast from the event. Internet media accreditation is only available for journalists not photographers.

Applications must arrive prior to Wednesday 15th October 2014.

#### **Guidelines and Information for Accreditation Applications**

Up to a maximum of three (3) representatives per organisation will be considered for accreditation by the FIA. A separate application form should be submitted for each person to be accredited. A maximum of one (1) pass will be issued to websites (photo tabards are not issued to websites).

To be accredited, a publication must:

- i) have a circulation size and quality that satisfies the criteria of the FIA.
- ii) be on sale to the public.

The FIA considers the media pass to be a working tool to be used only by bona fide members of the press. Publishers, marketing personnel, sub-editors, staff of the publication's secretariat, etc. cannot be accredited as media.

Media passes can be allocated to general news, specialist, business and lifestyle consumer publications that do not intend to publish conventional rally reports but whose coverage is considered to be of promotional benefit to the sport. As a general rule, however, the FIA will not accredit publications less than one year old.

Accreditation for Press Photographers: The FIA provides 12 (twelve) photographer Tabards for UK-based Photographers. Priority will be given to national publications and agencies based on circulation, frequency and previous coverage of Wales Rally GB. All photographers must attend the FIA Media Delegate's special pre-event safety briefing (time tba) before being granted a tabard.

Additionally a limited number of media may be accredited to cover the Wales Rally GB National Rally but, again, strictly based on circulation, frequency and previous coverage of the National Rally.

Advertising, PR, marketing, or sponsor representatives are not eligible for accreditation.

Once applications have been processed by Wales Rally GB and approved by the FIA, a letter or email confirming successful accreditation will be sent to the applicant(s). This letter must be produced when collecting passes at the event. No pass(es) can be collected without this confirmation.

## **12. Useful Services**

### **12.1 Deeside (Flintshire) Information**

#### **Tourist Information Centre**

Flintshire Visitor Centre, Earl Road, Mold, CH7 1AP

Tel: 01352 759 331

Email: [info@moldtouristinfo.co.uk](mailto:info@moldtouristinfo.co.uk)

#### **Air Travel**

Deeside is easy to get to from Manchester International Airport (40 mins) and Liverpool John Lennon Airport (40 mins), with direct transfers by road, coach and train.

For further information visit:

[www.manchesterairport.co.uk](http://www.manchesterairport.co.uk) or [www.liverpooljohnlennonairport.com](http://www.liverpooljohnlennonairport.com)



### Car & Van Hire

Name	Phone Number	Website
Jolly Good Van Hire, Deeside	01244 459104	<a href="http://www.jollygoodvanhire.co.uk">www.jollygoodvanhire.co.uk</a>
Deeside 4X4 Ltd, Deeside	01244 819444	<a href="http://www.deeside4x4.co.uk">www.deeside4x4.co.uk</a>

## 12.2 Conwy Information

### Tourist Information Centres

Llandudno, Library Building, Mostyn Street

Tel: 01492 577577

Email: [llandudnotic@conwy.gov.uk](mailto:llandudnotic@conwy.gov.uk)

Conwy, Muriau Building, Rosehill Street, Conwy, LL32 8LD

Tel: 01492 577566

Email: [conwytic@conwy.gov.uk](mailto:conwytic@conwy.gov.uk)

### Car & Van Hire

Name	Phone Number	Website
Jolly Good Van Hire, Colwyn Bay	01492 547461	<a href="http://www.jollygoodvanhire.co.uk">www.jollygoodvanhire.co.uk</a>
Aberconwy Car & Van Hire	01492 874669	<a href="http://www.aberconwycarhire.co.uk">www.aberconwycarhire.co.uk</a>



---

## Appendix 1 Itineraries and Maps

### (Route 1.0)

1.1	Friday Itinerary .....	16
	Friday Map.....	17
1.2	Saturday Itinerary .....	18
	Saturday Map .....	19
1.3	Sunday Itinerary .....	20
	Sunday Map.....	21
1.4	Special Stage routes compared to previous years.....	22
1.5	Reconnaissance Schedule (Version 1.1) .....	23

## 1.1 Friday Itinerary

2014 WALES RALLY GB

1.0

09 June 2014

Ceremonial Start

Thursday 13 November 2014

TC	Location	SS Dist.	Liaison Dist.	Total Dist.	Target	First Car
SS		Km.	Km.	Km.	Time	Due
Ceremonial Start - Colwyn Bay						18:30

Start (Sections 1 & 2)

Friday 14 November 2014

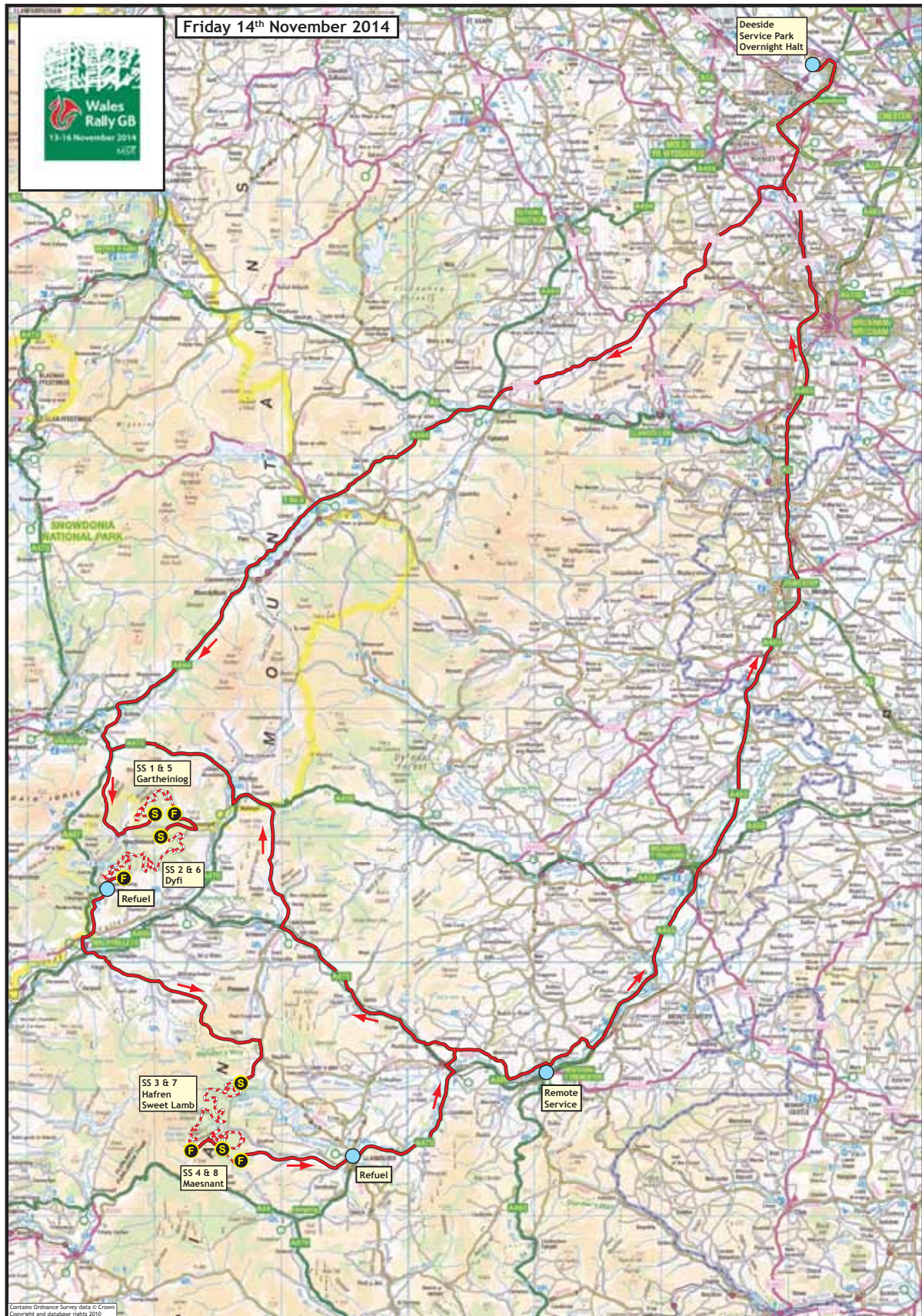
TC	Location	SS Dist.	Liaison Dist.	Total Dist.	Target	First Car
SS		Km.	Km.	Km.	Time	Due
0	Start - Deeside	-	-	-		05:30
RZ	Refuel (FIA Fuel) - Deeside	-	-	-		
1	Distance to next refuel	(36.48)	(116.42)	(152.90)		
1		-	105.00	105.00	2:11	07:41
SS 1	Gartheiniog 1	14.58	-	-		07:44
2		-	6.42	21.00	0:27	08:11
SS 2	Dyfi 1	21.90	-	-		08:14
RZ	Refuel (FIA Fuel) - Ceinws	-	5.00	-		
2	Distance to next refuel	(37.30)	(44.00)	(81.30)		
3		-	33.00	54.90	1:09	09:23
SS 3	Hafren Sweet Lamb 1	23.50	-	-		09:26
4		-	4.00	27.50	0:30	09:56
SS 4	Maesnant 1	13.80	-	-		09:59
RZ	Refuel (FIA Fuel) - Llanidloes	-	12.00	-		
3	Distance to next refuel	(36.48)	(104.84)	(141.32)		
4A	Newtown Regroup & Technical Zone - In	-	37.00	50.80	1:05	11:04
4B	Newtown Regroup - Out	-	0.04	0.04	0:15	11:19
4C	Service - In	-	0.38	0.38	0:04	11:23
Remote Service A (Newtown)		(73.78)	(185.84)	(259.62)	0:15	
4D	Service - Out	-	-	-		11:38
5		-	68.00	68.00	1:26	13:04
SS 5	Gartheiniog 2	14.58	-	-		13:07
6		-	6.42	21.00	0:27	13:34
SS 6	Dyfi 2	21.90	-	-		13:37
RZ	Refuel (FIA Fuel) - Ceinws	-	5.00	-		
4	Distance to next refuel	(37.30)	(44.50)	(81.80)		
7		-	33.00	54.90	1:09	14:46
SS 7	Hafren Sweet Lamb 2	23.50	-	-		14:49
8		-	4.00	27.50	0:30	15:19
SS 8	Maesnant 2	13.80	-	-		15:22
8A	Hafren	-	1.50	15.30	0:17	15:39
RZ	Refuel (FIA Fuel) - Llanidloes	-	11.00	-		
5	Distance to next refuel	(0.00)	(122.05)	(122.05)		
8B	Parc Fermé & Technical Zone - In	-	133.00	133.00	2:46	18:25
8C	Parc Fermé Out - Flexi Service - In	-	0.05	0.05	0:10	18:35
Flexi Service B (Deeside)		(73.78)	(245.97)	(319.75)	0:45	
8D	Flexi Service Out - Parc Fermé - In	-	-	-		(19:20)
All cars must be returned to Parc Fermé no later than						21:30
Friday Totals		147.56	431.81	579.37		
					Sunrise	07:43
					Sunset	16:17

© International Motor Sports Ltd. 2014 Not for publication without the written permission of IMS

© International Motor Sports Ltd. 2014 Not for publication without the written permission of IMS



## Friday Map



## 1.2 Saturday Itinerary

# 2014 WALES RALLY GB

1.0

09 June 2014

Re-Start (Sections 3 & 4)

Saturday 15 November 2014

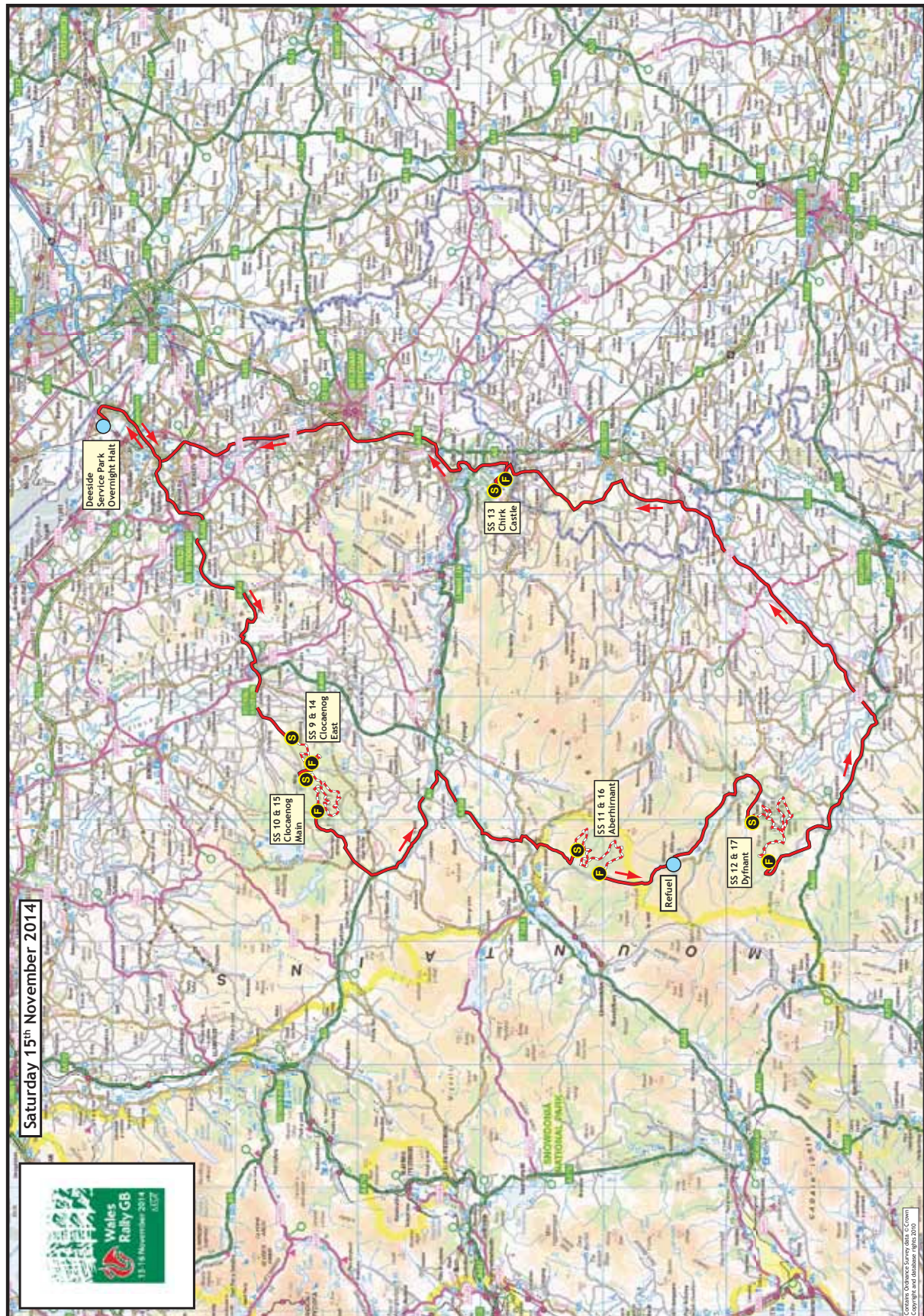
TC	Location	SS Dist.	Liaison Dist.	Total Dist.	Target Time	First Car Due
SS		Km.	Km.	Km.		
8E	Parc Fermé - Out Service - In	-	-	-		06:30
	<b>Service C (Deeside)</b>	-	-	-	0:15	
8F	Service - Out	-	-	-		06:45
<b>RZ</b>	Refuel (FIA Fuel) - Deeside	-	-	-		
<b>6</b>	<i>Distance to next refuel</i>	(37.90)	(106.50)	(144.40)		
9		-	47.00	47.00	1:00	07:45
<b>SS 9</b>	<b>Clocaenog East 1</b>	<b>8.40</b>	-	-		<b>07:48</b>
10		-	2.50	10.90	0:14	08:02
<b>SS 10</b>	<b>Clocaenog Main 1</b>	<b>14.00</b>	-	-		<b>08:05</b>
11		-	38.00	52.00	1:05	09:10
<b>SS 11</b>	<b>Aberhirmant 1</b>	<b>15.50</b>	-	-		<b>09:13</b>
<b>RZ</b>	Refuel (FIA Fuel) - Vyrnwy	-	19.00	-		
<b>7</b>	<i>Distance to next refuel</i>	(22.56)	(120.60)	(143.16)		
12		-	27.00	42.50	0:53	10:06
<b>SS 12</b>	<b>Dyfnant 1</b>	<b>20.50</b>	-	-		<b>10:09</b>
13		-	65.00	85.50	1:47	11:56
<b>SS 13</b>	<b>Chirk Castle</b>	<b>2.06</b>	-	-		<b>11:59</b>
13A	Regroup & Technical Zone - In	-	47.50	49.56	1:03	13:02
13B	Regroup - Out & Service - In	-	0.10	0.10	0:30	13:32
	<b>Service D - (Deeside)</b>	<b>(60.46)</b>	<b>(227.10)</b>	<b>(287.56)</b>	<b>0:30</b>	
13C	Service - Out	-	-	-		14:02
<b>RZ</b>	Refuel (FIA Fuel) - Deeside	-	-	-		
<b>8</b>	<i>Distance to next refuel</i>	(37.90)	(106.50)	(144.40)		
14		-	47.00	47.00	1:00	15:02
<b>SS 14</b>	<b>Clocaenog East 2</b>	<b>8.40</b>	-	-		<b>15:05</b>
15		-	2.50	10.90	0:14	15:19
<b>SS 15</b>	<b>Clocaenog Main 2</b>	<b>14.00</b>	-	-		<b>15:22</b>
16		-	38.00	52.00	1:05	16:27
<b>SS 16</b>	<b>Aberhirmant 2</b>	<b>15.50</b>	-	-		<b>16:30</b>
<b>RZ</b>	Refuel (FIA Fuel) - Vyrnwy	-	19.00	-		
<b>9</b>	<i>Distance to next refuel</i>	(20.50)	(112.05)	(132.55)		
17		-	27.00	42.50	0:53	17:23
<b>SS 17</b>	<b>Dyfnant 2</b>	<b>20.50</b>	-	-		<b>17:26</b>
17A	Parc Fermé & Technical Zone - In	-	104.00	124.50	2:35	20:01
17B	Parc Fermé Out - Flexi Service - In	-	0.05	0.05	0:10	20:11
	<b>Flexi Service E (Deeside)</b>	<b>(58.40)</b>	<b>(218.55)</b>	<b>(276.95)</b>	<b>0:45</b>	
17C	Flexi Service Out - Parc Fermé - In	-	-	-		(20:56)
	<b>All cars must be returned to Parc Fermé no later than</b>					<b>23:15</b>
<b>Saturday Totals</b>		<b>118.86</b>	<b>445.65</b>	<b>564.51</b>		
					Sunrise	07:43
					Sunset	16:18

© International Motor Sports Ltd. 2014 Not for publication without the written permission of IMS

© International Motor Sports Ltd. 2014 Not for publication without the written permission of IMS



## Saturday Map





## 1.3 Sunday Itinerary

2014 WALES RALLY GB

1.0	09 June 2014
-----	--------------

Re-Start (Sections 5 & 6) Sunday 16 November 2014

TC	Location	SS Dist.	Liaison Dist.	Total Dist.	Target	First Car
SS		Km.	Km.	Km.	Time	Due
17D	Parc Fermé - Out Service - In	-	-	-		07:05
	Service F (Deeside)	-	-	-	0:15	
17E	Service - Out	-	-	-		07:20
RZ	Refuel (FIA Fuel) - Deeside	-	-	-		
10	Distance to next refuel	(18.50)	(83.50)	(102.00)		
18		-	57.00	57.00	1:12	08:32
SS 18	Brenig 1	10.50	-	-		08:35
19		-	8.50	19.00	0:24	08:59
SS 19	Alwen 1	8.00	-	-		09:02
RZ	Refuel (FIA Fuel) - Denbigh	-	18.00	-		
11	Distance to next refuel	(22.90)	(124.74)	(147.64)		
20		-	33.00	41.00	0:52	09:54
SS 20	Kinmel Park 1	2.20	-	-		09:57
21		-	0.69	2.89	0:05	10:02
SS 21	Kinmel Park 2	2.20	-	-		10:05
22		-	35.50	37.70	0:47	10:52
SS 22	Alwen 2	8.00	-	-		10:55
22A	Regroup & Technical Zone - In	-	19.00	27.00	0:34	11:29
22B	Regroup - Out	-	0.05	0.05	0:25	11:54
23		-	0.50	0.50	0:03	11:57
SS 23	Brenig 2 (Power Stage)	10.50	-	-		12:00
23A	Llandudno - Finish	-	54.00	64.50	1:20	13:20
All cars must be returned to Deeside Parc Fermé no later than						16:15
Sunday Totals		41.40	208.24	249.64		
					Sunrise	07:45
					Sunset	16:15

TOTALS OF THE RALLY					
	SS	Liaison	Total		%
Friday 14 November	147.56	431.81	579.37		25.5%
Sections 1 & 2 - 8 SS				% of	
Saturday 15 November	118.86	445.65	564.51	Special	21.1%
Sections 3 & 4 - 9 SS				Stages	
Sunday 16 November	41.40	208.24	249.64		16.6%
Sections 5 & 6 - 6 SS					
Total - 23 SS	307.82	1085.70	1393.52		22.1%

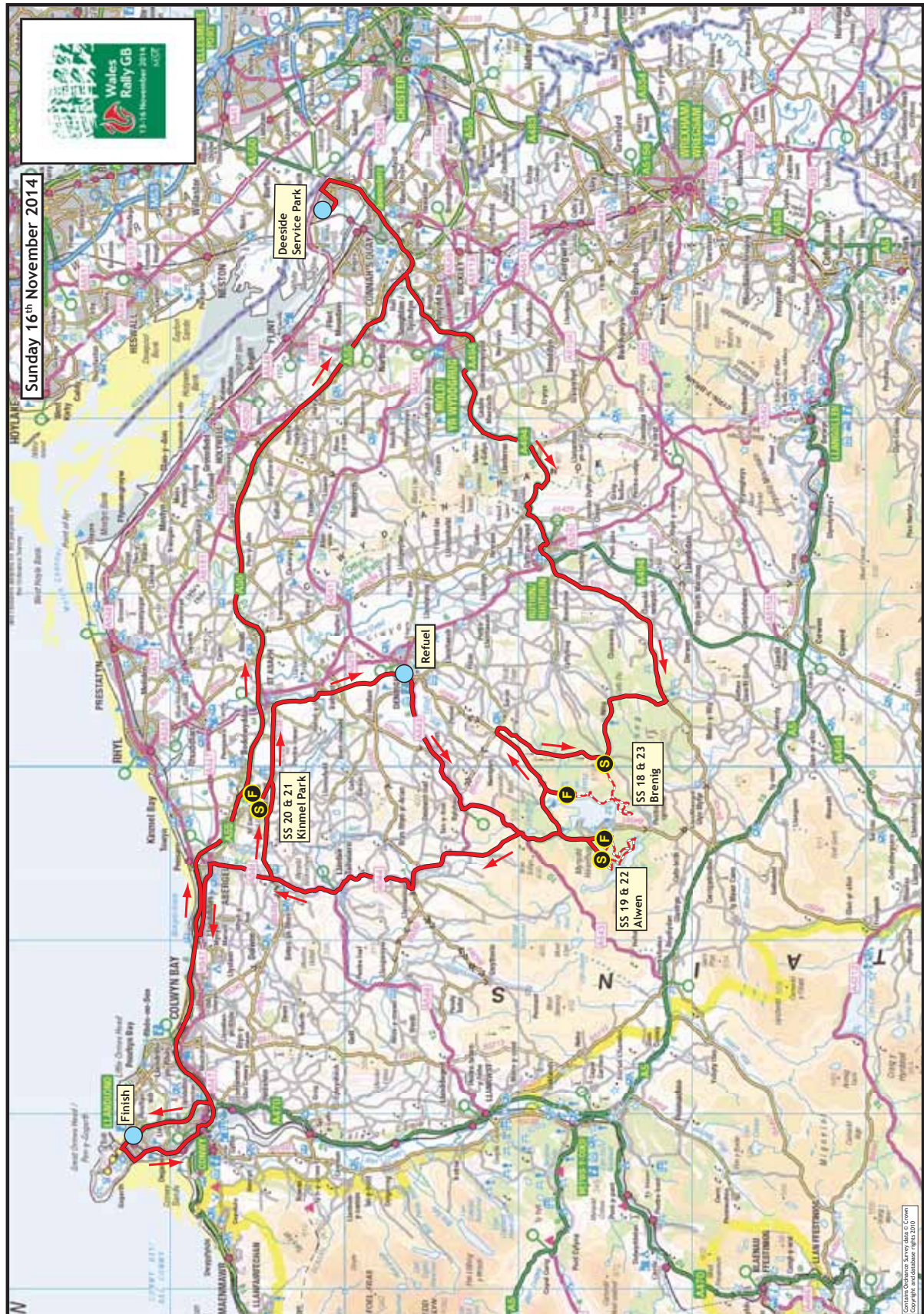
© International Motor Sports Ltd. 2014. Not for publication without the written permission of IMS

© International Motor Sports Ltd. 2014 Not for publication without the written permission of IMS

Section 5

Section 6

## Sunday Map



## 1.4 Special Stage routes compared to previous years

Stage		Length	Comparison
Shakedown	Clocaenog	0.00 - 3.32	New stage (Parts shared with SS9/14)
SS 1 & 5	Gartheiniog	0.00 - 14.58	Identical route to 2013 - SS 10/12
SS 2 & 6	Dyfi	0.00 - 21.90	Identical route to 2013 - SS 11/13
SS 3 & 7	Hafren Sweet Lamb	0.00 - 18.36	2013 - SS 4/7 (0.00 - 18.36)
		18.36 - 23.32	2012 - SS 2/5 (18.36 - 23.32)
		23.32 - 23.55	New Stage
SS 4 & 8	Maesnant	0.00 - 9.86	New Stage
		9.86 - 12.20	2013 - SS 4/7 (30.08 - 32.42)
		12.20 - 13.91	New Stage
SS 9 & 14	Clocaenog East	0.00 - 8.25	New Stage
SS 10 & 15	Clocaenog Main	0.00 - 13.24	New Stage
SS 11 & 16	Aberhirnant	0.00 - 14.91	New Stage
SS 12 & 17	Dyfnant	0.00 - 20.48	Identical route to 2012 - SS 1/4
SS 13	Chirk Castle	0.00 - 2.06	Identical route to 2013 - SS 15/16
SS 18 & 23	Brenig	0.00 - 10.59	New Stage
SS 19 & 22	Alwen	0.00 - 10.31	New Stage
SS 20 & 21	Kinmel Park	0.00 - 2.18	Identical route to 2013 - SS 20/21





## 1.5 Reconnaissance Schedule - Version 1.1

Tuesday 11 <sup>th</sup> November							
Opens			Closes	Stage	Kilometres		
Priority 1 & 2	Priority 3	All Drivers			SS	To Next	Total
07:30	08:15	08:55		Dyfnant	20.50	25.00	
			10:30	Dyfnant	20.50	37.00	
09:20	10:05	10:45		Gartheiniog	14.58	6.50	
09:40	10:25	11:05		Dyfi	21.90	12.00	
			13:30	Gartheiniog	14.58	6.50	
			13:50	Dyfi	21.90	33.00	
11:30	12:15	12:55		Hafren Sweet Lamb	23.50	4.00	
12:00	12:45	13:25		Maesnant	13.80	17.00	
			16:00	Hafren Sweet Lamb	23.50	4.00	
			16:30	Maesnant	13.80		
					<b>188.56</b>	<b>145.00</b>	<b>333.56</b>
Wednesday 12 <sup>th</sup> November							
07:30	08:15	08:55		Kinmel Park	2.20	0.70	
			10:00	Kinmel Park	2.20	38.00	
08:15	09:00	09:40		Clocaenog East	8.40	3.00	
			11:00	Clocaenog East	8.40	3.00	
08:40	09:25	10: 50		Shakedown	3.30	3.00	
			11:25	Shakedown	3.30	2.50	
08:50	09:35	10:15		Clocaenog Main	14.00	6.00	
			11:50	Clocaenog Main	14.00	3.00	
09:25	10:10	10:50		Brenig	10.50	8.00	
09:45	10:30	11:10		Alwen	8.00	20.00	
			12:55	Brenig	10.50	8.00	
			13:15	Alwen	8.00	34.00	
11:20	12:05	12:45		Aberhirnant	15.50	5.00	
			15:00	Aberhirnant	15.50	52.00	
12:55	13:40	14:20		Chirk Castle	2.06	3.60	
			16:40	Chirk Castle	2.06		
					<b>127.92</b>	<b>189.80</b>	<b>317.72</b>

## Appendix 2 Wales Rally GB National

### 1. Format

- Wales Rally GB National will be a three day event on Friday, Saturday & Sunday.
- There will be one running of all stages used by the WRC event.
- There will be the opportunity to take part in the WRC Ceremonial Start on Thursday evening.
- Servicing will be alongside the WRC teams in the Deeside Service Park.
- The Finish Ceremony will be in Llandudno on Sunday afternoon, on the WRC podium.

### 2. Timetable

#### Wednesday 10 September

Regulations published and entries open

#### Friday 24 October

Closing date for Entries

#### Thursday 13 November

10.00 - 14.00 Scrutineering and Documentation for competitors taking part in the Ceremonial Start - Deeside

16.00 - 21.00 Scrutineering and Documentation for competitors **not** taking part in the Ceremonial Start - Deeside

19.30 Ceremonial Start - Colwyn Bay

#### Friday 14 November

07.30 Start of Day - Deeside

15.02 End of Day - Deeside

#### Saturday 15 November

09.00 Start of Day - Deeside

15.17 End of Day - Deeside

#### Sunday 16 November

11.00 Start of Day - Deeside

15.17 Finish Ceremony - Llandudno

### 3. Eligibility

This will be a National B stage rally for cars complying with MSA Technical Regulations including classes for cars complying with MSA and FIA Historic Regulations.

### 4. Entry Fee

Wales Rally GB National: £750.00 + VAT @ 20% = £900.00

### 5. Entry Acceptance Procedure

The maximum number of entries will be 85. If less than 75 entries are received for the International event, the number of National entries accepted may be increased.

Entries will be allocated on a first come, first served basis.

## 6. Entry Package

Vehicle Plates	
Guest	2
Service	2
Passes	
Guest	4
Service	6
Administration	
Road Books	1
Rally Guide 2	2
Route maps	2
Programme	4

## 7. Reconnaissance

No reconnaissance of the special stages is permitted for National competitors. Competitors may use subjective route notes purchased from:

Brian & Liz Patterson

Tel: +44 (0)2890 844111, Email: [pattpace@aol.com](mailto:pattpace@aol.com), Web: [www.rallynews.net](http://www.rallynews.net)

## 8. Service Park

The Service Park opens at 08.00 on Thursday 13 November. There will be no access before this time.

## 9. Fuel

Competitors will be permitted to refuel in the following manner:

1. Commercially available pump fuel dispensed from pumps at filling stations marked in the road book.
2. Fuel supplied by the operator of the Refuelling Zones marked in the road book and the Service Park.

## 10. Servicing

The Service Park will be in Deeside. Management or auxiliary service cars will be prohibited on the event.

There will be no overnight Parc Fermé.



## Wales Rally GB National Itinerary

2014 WALES RALLY GB NATIONAL

N1.0	09 June 2014
------	--------------

Ceremonial Start Thursday 13 November 2014

TC	Location	SS Dist.	Liaison Dist.	Total Dist.	Target	First Car
SS		Km.	Km.	Km.	Time	Due
Ceremonial Start - Colwyn Bay						19:30

Start Friday 14 November 2014

TC	Location	SS Dist.	Liaison Dist.	Total Dist.	Target	First Car
SS		Miles	Miles	Miles	Time	Due
0	Start - Deeside	-	-	-		07:30
RZ	Refuel (FIA Fuel) - Deeside	-	-	-		
1	Distance to next refuel	(22.67)	(72.34)	(72.34)		
1		-	65.24	65.24	2:11	09:41
SS 1	Gartheiniog	9.06	-	-		09:44
2		-	3.99	13.05	0:27	10:11
SS 2	Dyfi	13.61	-	-		10:14
RZ	Refuel (FIA Fuel) - Ceinws	-	3.11	-		
2	Distance to next refuel	(23.18)	(27.65)	(50.83)		
3		-	20.51	34.11	1:09	11:23
SS 3	Hafren Sweet Lamb	14.60	-	-		11:26
4		-	2.49	17.09	0:30	11:56
SS 4	Maesnant	8.57	-	-		11:59
8A	Hafren	-	0.93	9.51	0:17	12:16
RZ	Refuel (FIA Fuel) - Llanidloes	-	6.84	-		
3	Distance to next refuel	(0.00)	(75.81)	(75.81)		
8B	Deeside Service - In	-	82.64	82.64	2:46	15:02
Friday Totals		45.84	175.80	221.64		

Sunrise	07:43
Sunset	16:17

© International Motor Sports Ltd. 2014 Not for publication without the written permission of IMS

© International Motor Sports Ltd. 2014 Not for publication without the written permission of IMS



## 2014 WALES RALLY GB NATIONAL

N1.0

09 June 2014

Re-Start

Saturday 15 November 2014

TC SS	Location	SS Dist. Miles	Liaison Dist. Miles	Total Dist. Miles	Target Time	First Car Due
8F	Service - Out	-	-	-		09:00
RZ 6	Refuel (FIA Fuel) - Deeside <i>Distance to next refuel</i>	- (23.55)	- (66.18)	- (89.73)		
9		-	29.20	29.20	1:00	10:00
SS 9	<b>Clocaenog East</b>	<b>5.22</b>	-	-		<b>10:03</b>
10		-	1.55	6.77	0:14	10:17
SS 10	<b>Clocaenog Main</b>	<b>8.70</b>	-	-		<b>10:20</b>
11		-	23.61	32.31	1:05	11:25
SS 11	<b>Aberhirnant</b>	<b>9.63</b>	-	-		<b>11:28</b>
RZ 7	Refuel (FIA Fuel) - Vyrnwy <i>Distance to next refuel</i>	- (14.02)	11.81 (74.88)	- (88.89)		
12		-	16.78	26.41	0:53	12:21
SS 12	<b>Dyfnant</b>	<b>12.74</b>	-	-		<b>12:24</b>
13		-	40.39	53.13	1:47	14:11
SS 13	<b>Chirk Castle</b>	<b>1.28</b>	-	-		<b>14:14</b>
13A	Deeside Service - In	-	29.52	30.80	1:03	15:17
<b>Saturday Totals</b>		<b>37.57</b>	<b>141.05</b>	<b>178.62</b>		

Re-Start

Sunday 16 November 2014

TC SS	Location	SS Dist. Miles	Liaison Dist. Miles	Total Dist. Miles	Target Time	First Car Due
17E	Service - Out	-	-	-		11:00
RZ 10	Refuel - Deeside <i>Distance to next refuel</i>	- (14.23)	- (97.04)	- (111.27)		
20		-	29.00	29.00	1:00	12:00
SS 20	<b>Kinmel Park 1</b>	<b>1.37</b>	-	-		<b>12:03</b>
21		-	0.43	1.80	0:05	12:08
SS 21	<b>Kinmel Park 2</b>	<b>1.37</b>	-	-		<b>12:11</b>
22		-	22.06	23.43	0:47	12:58
SS 22	<b>Alwen</b>	<b>4.97</b>	-	-		<b>13:01</b>
23		-	12.00	16.97	0:40	13:41
SS 23	<b>Brenig</b>	<b>6.52</b>	-	-		<b>13:44</b>
23A	Llandudno - Finish	-	33.55	40.08	1:20	15:04
<b>Sunday Totals</b>		<b>14.23</b>	<b>97.04</b>	<b>111.27</b>		
					Sunrise	07:45
					Sunset	16:15

TOTALS OF THE RALLY					
	SS	Liaison	Total		%
Friday 14 November	45.84	175.80	221.64	% of Special Stages	20.7%
4 SS					
Saturday 15 November	37.57	141.05	178.62		21.0%
5 SS					
Sunday 16 November	14.23	97.04	111.27		12.8%
4 SS					
<b>Total - 13 SS</b>	<b>97.64</b>	<b>413.89</b>	<b>511.53</b>		<b>19.1%</b>

© International Motor Sports Ltd. 2014 Not for publication without the written permission of IMS

