



12-15 NOVEMBER 2015

WALES RALLY GB

RALLY OF LEGENDS

**RALLY
GUIDE 1**



WALESRALLYGB.COM

Contents

1.	Welcome _____	2
2.	Contact Details _____	4
3.	Programme and Critical Deadlines _____	5
4.	Entry Details _____	6
5.	Service Park _____	8
6.	Two-way Radio _____	9
7.	Import of Vehicles and Spare Parts _____	10
8.	Helicopters _____	10
9.	Spectator Tickets and Hospitality _____	10
10.	Accommodation _____	11
11.	Media _____	11
12.	Useful Services _____	13
Appendix 1	Itineraries and Maps _____	15
Appendix 2	WRGB National Rally _____	25

<p>This document has no regulatory power. It is for information only.</p>

1. Welcome

Croeso cynnes iawn - a warm welcome to Wales Rally GB, one of the UK's leading motorsports events.

We're looking forward to the 2105 event and to building on the past two years which have been such a success with fans and competitors alike and have given a major boost to the north Wales economy.

It's widely recognised that Wales has some of the finest rally stages anywhere in the world. The spectacular scenery and landscapes of North Wales will again provide the perfect backdrop for Wales Rally GB. RallyFest stages set against stunning backdrops such as Chirk Castle proved to be a big hit and extended the appeal of the Rally.

The Welsh Government's support for the Rally also shows our continued commitment to Wales Rally GB, which has significant links with the automotive sector in Wales. Wales is home to around 150 component and systems manufacturing companies and has 17,000 people employed in automotive manufacturing with an annual turnover of £3 billion.

Enjoy your time in Wales and at the Rally of Legends, and I hope you find time to visit some of the outstanding attractions our country has to offer while you're here.

Ken Skates

Deputy Minister for Culture, Sport and Tourism

Welsh Government



Welcome to Wales Rally GB - an award-winning event that just keeps getting better and better since its move to a new base in north Wales.

This will be the third year that the concluding round of the FIA World Rally Championship has had its headquarters in Deeside and November's finale will continue to build on the many notable successes of the past 24 months.

While we are delighted that these achievements have been recognised recently with the award of the coveted Best Event (Large) accolade at the National Tourism Awards for Wales 2015, we are far from resting on our laurels. As a result, we are confident this year's Wales Rally GB will be the best yet.

For starters the competitive route for 2015 sees the re-introduction of the famous Myherin and iconic Great Orme stages last seen in 2013. The former is always a great favourite with competitors while the latter provides one of the most stunning backdrops on the globe-trotting WRC calendar.

As tradition dictates the majority of the thrilling timed sections are set on some of the world's finest gravel tracks in the awe-inspiring Welsh forests. Adding to the challenge and spectacle, two of these epic stages will be held after sunset on Saturday.

Thanks to our enthusiastic partners in Conwy County Borough Council the event commences on Thursday evening with a sparkling Ceremonial Start on what's sure to be a crowded Mostyn Street in Llandudno.

The dramatic high-speed action then blasts off early Friday morning on familiar Wales Rally GB territory in mid-Wales. There are double runs through the well-known Hafren, Sweet Lamb and Myherin stages, either side of a lunchtime regroup on the busy streets of central Newtown.

Saturday offers an even longer and more challenging day starting with back-to-back runs through the classic Gartheiniog and Dyfi forests to the north of Machynlleth. The route returns to Deeside via the fast and tricky Dyfnant and Aberhiraant stages and the well-established, family-friendly RallyFest at Chirk Castle. After a short service, the intrepid crews then set out for a second run through both Dyfnant and Aberhiraant, this time under cover of darkness.

Sunday is a shorter - but no less spectacular - day set entirely in north Wales. The Brenig and Alwen stages introduced last year both feature again, with the second run through Brenig being Wales Rally GB's concluding 'Power Stage'. In-between comes the wonderful test around the Great Orme.

This year's Ceremonial Finish and prize-giving have been relocated to the Service Park at Deeside, ensuring that celebrations can take place among the teams and fans to create a memorable finale to the 2015 WRC season.

It all adds up to 19 Special Stages and 312 kms (191 miles) of fiercely fought competition for what we are certain will be a brilliant conclusion to this year's FIA World Rally Championship.

The popularity of the National Rally is another important factor in the recent success story and, ensuring crews from all levels of the sport within the UK can be part of a World Championship rally, the route for the WRGB National Rally shadows the international event and, by popular demand, the teams are also based in Deeside.

It's been written that 'this year's route is a celebration of everything that's good and great about the present and past of Britain's round of the WRC'. Praise indeed but we are confident the 2015 Wales Rally GB will build on all the recent massive accomplishments and fully live up to everyone's ever-escalating expectations.

I wish you all a very safe, enjoyable and successful Wales Rally GB - and thank you for being such an important part of this great event.

Alan Gow

Chairman, The Motor Sports Association



1.2 Route Changes for 2015

- The Ceremonial Start on Thursday evening will be at Mostyn Street, Llandudno.
- The Friday route will use the Myherin stage which was not used last year. The Remote Service at Newtown will be come a Tyre Change Zone.
- The distance between tyre changes on Saturday is over 100 kms and an FIA waiver has been granted for this.
- Dyfnant 2 and Aberhirlnant 2 on Saturday will be run in darkness.
- On Sunday the Great Orme stage will be used for the first time since 2013, this is on asphalt.

2. Contact Details

2.1 Permanent Contact Details

Wales Rally GB	Telephone: +44 (0)1753 765100
Motor Sports House	Fax: +44 (0)1753 765106
Riverside Park	Email: rallyoffice@walesrallygb.com
Colnbrook	Website: www.walesrallygb.com
SL3 0HG	

2.2 Key Officials

Managing Director, IMS	Ben Taylor	btaylor@walesrallygb.com
Event Co-ordinator	Andrew Kellitt	akellitt@walesrallygb.com
Clerk of the Course	Fred Gallagher	fgallagher@walesrallygb.com
Deputy Clerk of the Course	Iain Campbell	icampbell@walesrallygb.com
Deputy Clerk of the Course	Sue Sanders	ssanders@walesrallygb.com
Assistant Clerk of the Course	Keith Ashley	kashley@walesrallygb.com
Assistant Clerk of the Course	Alyn Edwards	aedwards@walesrallygb.com
Secretary to the Event	Penny Harvey	pharvey@walesrallygb.com
Marketing Manager	Helen Waight	hwaight@walesrallygb.com

2.3 Rally Headquarters

Rally Headquarters will be operational from Monday 9 November - Sunday 15 November.

Wales Rally GB Rally HQ
Toyota Engine Manufacturing Division
Tenth Avenue
Deeside Industrial Estate
CH5 2TW

2.4 Media Contact Details

Jonathan Gill	
National Press Officer - Wales Rally GB	
High Barn	Telephone: +44 (0)1372 414120
High Barn Road	Email: media@walesrallygb.com
Effingham	
KT24 5PR	

3. Programme and Critical Deadlines

3.1 Schedule Before the Rally Week

Wednesday 9 September
Supplementary Regulations published. Entries open
Monday 12 October
Closing date for entries
Tuesday 13 October
Road Books, Route Map and Rally Guide 2 available
Wednesday 14 October
Closing Date for UK Print Media, Internet Media, Radio & Photographers Media Accreditation
Thursday 22 October
All priority drivers must notify Vital Equipment Ltd of their fuel requirements
Monday 26 October
Closing date for return of Service Park Forms

3.2 Schedule During the Rally Week

Monday 9 November		
09.00	Service Park opens	Deeside
12.00 - 19.00	Rally Office open	Service Park, Deeside
14.00 - 17.00	Collection of reconnaissance trackers	Rally Office, Service Park
14.00 - 19.00	Reconnaissance registration (all drivers)	Rally Office, Service Park
14.00 - 19.00	Administrative checks (P3 & non priority)	Rally Office, Service Park
14.00 - 19.00	Collection of materials and documents	Rally Office, Service Park
14.00 - 19.00	Media Accreditation (for recce only)	Rally Office, Service Park
Tuesday 10 November		
07.30 - 16.30	Reconnaissance - Day 1	Details - Appendix 1
09.00 - 18.00	Rally Office open	Service Park, Deeside
09.00 - 18.00	Administrative Checks for P1 & P2 drivers	Rally Office, Service Park
14.00 - 18.00	Media Accreditation open	Rally Office, Service Park
14.00 - 18.00	Media Centre open	Media Centre, Rally HQ
15.00 - 19.00	Collection of FIA WRC Safety Trackers	SiT Workshop, Service Park
Wednesday 11 November		
07.30 - 16.30	Reconnaissance - Day 2	Details - Appendix 1
08.00 - 20.00	Media Centre open	Media Centre, Rally HQ
08.00 - 20.30	Rally Office open	Service Park, Deeside
09.00 - 14.00	Administrative Checks for P1 & P2 drivers	Rally Office, Service Park
10.00 - 16.00	Media Accreditation open	Rally Office, Service Park
10.00 - 13.00	Sealing and Marking for Manufacturers & WRC Teams	Service Park, Deeside
13.00 - 14.00	Weight & sound checks for Manufacturers & WRC Teams	Service Park, Deeside
15.00 - 20.00	Scrutineering/Component Sealing for P2, P3 & Non-Priority drivers	Coleg Cambria, Connah's Quay, Deeside CH5 4BR
16.00	Team Managers' meeting (Manufacturers & WRC Teams)	Rally HQ

16.00 - 19.00	Return of reconnaissance trackers	Rally Office, Service Park
Thursday 12 November		
07.00 - 20.30	Rally Office open	Service Park, Deeside
07.00 - 22.00	Media Centre open	Media Centre, Rally HQ
08.00 - 18.00	Media Accreditation open	Rally Office, Service Park
08.00 - 09.30	Shakedown for Priority 1 & 2 drivers	Clocaenog Forest
09.30 - 11.00	Shakedown for Priority 3 drivers	Clocaenog Forest
11.00 - 12.30	Shakedown for Non Priority drivers	Clocaenog Forest
11.00	Publication of start lists for Ceremonial Start and Section 1	Rally Office, Service Park
14.00	FIA Pre Event Press Conference	Media Centre, Rally HQ
17.00 - 17.30	Autograph session (Invited drivers)	Venue Cymru, Llandudno
18.30	Ceremonial Start	Mostyn Street, Llandudno
Friday 13 November		
06.30	Start of Section 1	Service Park, Deeside
06.30 - 21.00	Rally Office open	Service Park, Deeside
07.00 - 22.00	Media Centre open	Media Centre, Rally HQ
19.00	Publication of start list for Saturday	Rally Office, Service Park
21.00	All cars must be in Parc Fermé (except Rally 2)	Service Park, Deeside
Saturday 14 November		
05.00	Start of Section 3	Service Park, Deeside
05.00 - 00.15	Rally Office open	Service Park, Deeside
07.00 - 23.00	Media Centre open	Media Centre, Rally HQ
22.00	Publication of start list for Sunday	Rally Office, Service Park
00.15	All cars must be in Parc Fermé (except Rally 2)	Service Park, Deeside
Sunday 15 November		
07.00	Start of Section 6	Service Park, Deeside
07.00 - 19.00	Rally Office open	Service Park, Deeside
07.00 - 22.00	Media Centre open	Media Centre, Rally HQ
13.44	Finish of Rally	Service Park, Deeside
14.15	Podium and Prize-giving	Service Park, Deeside
15.00	FIA Press Conference	Media Centre, Rally HQ
15.15	Final Scrutineering	Coleg Cambria, Connah's Quay, Deeside CH5 4BR
17.30	Publication of provisional final classification	Rally Office, Service Park

4. Entry Details

4.1 Titles for which the rally counts

FIA World Rally Championship for Drivers and Co-Drivers

FIA World Rally Championship for Manufacturers

FIA WRC 2 Championship for Teams

FIA WRC 2 Championship for Drivers and Co-Drivers

FIA WRC 2 Production Car Cup for Drivers and Co-Drivers

FIA WRC 3 Championship for Teams

FIA WRC 3 Championship for Drivers and Co-Drivers
FIA Junior WRC Championship for Drivers and Co-Drivers

4.2 Entry fees

Manufacturer Team

Entry Fee for 2 cars €36,710 + VAT at 20% = €44,052

WRC Team

Entry Fee for 1 car €6,695 + VAT at 20% = €8,034

Entry Fee for 2 cars €13,390 + VAT at 20% = €16,068

Additional WRC car(s) serviced by a Manufacturer or WRC Team

Entry Fee for 1 car €6,695 + VAT at 20% = €8,034

Support Championships

WRC2 / WRC3 €3,935 + VAT at 20% = €4,722

FIA Junior WRC As agreed between the Organisers and the JWRC Championship

With the optional advertising proposed by the organisers (per entry)

Private entrant £2,333.33 (Sterling) + VAT at 20% = £2,800

Private entrant - British Licence £1,500.00 (Sterling) + VAT at 20% = £1,800

Others £4,000.00 (Sterling) + VAT at 20% = £4,800

Without the advertising proposed by the organisers (per entry)

Private entrant £4,458.33 (Sterling) + VAT at 20% = £5,350

Private entrant - British Licence £2,500.00 (Sterling) + VAT at 20% = £3,000

Others £5,100.00 (Sterling) + VAT at 20% = £6,120

4.3 Entry Packages

Manufacturers, WRC Teams and Support Championships - WRC Regulations Appendix VI.

Other entries:

	Others	Private entrants
Vehicle Plates		
Guest	4	2
Service	2	2
Auxiliary	1	0
Passes		
Guest	8	6
Service	10	6
Administration		
Road Book	3 (1)	1 (1)
Rally Guide 2	2 (1)	2 (1)
Route Map	4 (2)	2 (2)
Official Programme	4	4
Service Park Area	10 x 10m	10 x 10m

() Number of copies to be mailed/couriered to the Team Manager

4.4 Criteria for Acceptance of Entries

The maximum number of entrants will be 75 cars. If more than 75 entries are received the acceptance of entries will be at the discretion of the organisers. A reserve list of a maximum of 10 cars will be created.

To enable private entrants to have the maximum time to prepare for the event, the first 30 eligible private entries received will automatically be accepted. The full entry fee must accompany the entry and this can be paid by credit card, cheque or bank transfer.

To be eligible for the private entrant category and entry fee:

- neither crew member may be entered on any priority list by the FIA or MSA for rallies in 2015.
- the vehicle is not the property of a motor manufacturer or importer.
- the vehicle must be entered by one of the crew members.

To be eligible for the private entrant - British licence entry fee:

The conditions for the private entrant category above apply, plus the following

- the driver must hold a British passport.
- the driver must hold a competition licence issued by the MSA.
- the driver must be listed on the entry list as British.

The organiser's decision on eligibility for these categories will be final.

5. Service Park

5.1 Location

The Service Park will be located in the area next to the Toyota Engine Manufacturing Plant in Deeside Industrial Estate, Flintshire. The postcode for this location is CH5 2TW; the GPS reference is N53 13.990 W3 01.291. The surface is gravel.

The Service Park will be open from 09.00 Monday 9 November. Earlier access may be possible by prior arrangement with the organisers. Security will be provided on site from Monday 9 November until Monday 16 November. If you require any additional private security on site please contact the Rally Office.

5.2 Facilities

The following facilities will be provided at various points around the service park:

- Toilets
- Waste Removal / Hazardous Waste Collection
- Water
- Lighting
- Wi-Fi

The following can be provided:

- Private Toilets
- Waste Removal
- Water Supply

Space within the Service Park is extremely limited but additional service space may be available, dependant on requirements, at a cost of £10 per extra sq. metre + VAT.

Additional space and facilities can be ordered using the Service Park form which will be available at www.walesrallygb.com when the Supplementary Regulations are published.

This form should also be used if competitors wish to use a joint service area with other competitors.

Generators are permitted in the Service Park however these must be super silent diesel or LPG. Generators must be fenced off to restrict access to competent personnel only.

NO PETROL GENERATORS ARE PERMITTED ON THE SITE AT ANY TIME

All teams (except Manufacturer & WRC Teams) will be allocated a service area space of 10m x 10m.

5.3 Tyre Fitting Zone

There will be a tyre fitting zone after the Regroup in Newtown on Friday. Additional time has been added to the road section to allow for the Tyre Zone.

FIA WRC Sporting Regulations Article 52.1 will apply at the tyre fitting zone; additional information about the operation of this zone and the transportation of tyres to it will be given in the supplementary regulations.

6. Two-way Radio

6.1 Application Procedure

Ofcom is the regulator for the UK communications industries, with responsibilities across television, radio, telecommunications and wireless communications services. Any radio equipment used by a competitor and/or the associated support teams in the UK, must be covered by a licence issued by Ofcom.

Its operation must be strictly within the terms and conditions of the licence. The installation or use of equipment without a licence, or outside the terms, renders the operator/installer liable to prosecution. Upon conviction the equipment is liable to forfeiture together with fines and/or imprisonment.

Should you have any enquiries about your frequency or equipment requirements please contact:

Ofcom

Riverside House

2a Southwark Bridge Road

London

SE1 9HA

Telephone: +44 (0)20 7981 3000

Fax: +44 (0)20 7981 3333

Email: contact@ofcom.org.uk

Website: www.ofcom.org.uk

6.2 Scrutineering

To ensure that illegal equipment (or unauthorised frequencies) are not used during the rally, Ofcom staff may be inspecting competitors' radio equipment at the pre-event scrutineering and will also be present throughout the event itself to monitor and check radio equipment in the rally cars and service vehicles.

6.3 Airborne and Other Requirements

If your requirements are not met by the above, particularly if you require airborne use, exclusive channels or continuous carrier, you should contact JFMG Ltd who distribute Programme Making and Special Events licences on behalf of the Secretary of State.

Any applications should be received a month prior to the Rally.

JFMG Ltd

33-34 Alfred Place

London

WC1E 7DP

Telephone: +44 (0)20 7299 8660

Fax: +44 (0)20 7299 8661

Email: admin@jfmfg.co.uk

Website: www.jfmfg.co.uk

7. Import of Vehicles and Spare Parts

7.1 Competitors from the European Union

Competitors coming from the European Union do not need to make any special customs clearance. They may use any vehicle in Great Britain for up to 6 months, provided that the vehicle is not brought with the intention of selling it.

All vehicles need to have valid traffic insurance.

Tyres and spare parts can also be imported without clearance.

7.2 Competitors from outside the European Union

Competitors coming from outside the European Union will have to report to customs on their arrival in Great Britain. Please prepare a list of all the tools and equipment you are bringing with you.

Please contact the Customs Service for detailed information.

Telephone +44 (0)20 8929 0152

Website: www.hmrc.gov.uk

8. Helicopters

8.1 Procedure

Full details of the procedures regarding the flying of helicopters during Wales Rally GB will be available from the Rally Office and at www.walesrallygb.com.

9. Spectator Tickets and Hospitality

9.1 Spectator Tickets

Passes and Tickets

Passes and tickets are now on sale for the 2015 Wales Rally GB. World Rally Passes and RallyFest Tickets have been held at last year's prices while the Forest Pass has been reduced by 25% from 2014! Tickets are sold strictly subject to availability.

- The premier 4 day World Rally Pass (£99*) provides access to all 19 special stages as well as Thursday's pre-event Shakedown and Saturday's RallyFest at Chirk Castle.
- Reduced this year to £25*, Forest Passes also provide considerable savings over on-the-day, single stage tickets. Forest Passes give access to all the stages on the selected day (with the exception of Saturday's RallyFest at Chirk Castle).
- Held to last year's price, Chirk Castle RallyFest tickets cost just £25* per adult while a family ticket (2 adults & 3 children) offers significant savings at £45*. Additional child tickets can be purchased for £1* each.
- Single Stage tickets can still be purchased at the gate on the day for £30*.
- When accompanied by a full-paying adult, children aged 8 and under go free while those aged 9-15 can view all the action for just £1*.
- All adult tickets - whether purchased in advance or on the gate - include free parking** and a free programme worth £9.
- Access to the central Service Park in Deeside, the Ceremonial Start in Llandudno, the regroupings in Newtown on Friday and Llandudno on Sunday and the Ceremonial Finish will be free of charge.

* Terms and conditions apply to all ticket prices.

**If you wish to park a motorhome or camper van overnight at Sweet Lamb, there will be a charge made by the landowner (collected on arrival) of £10 per vehicle arriving between 8pm on Thursday 12th and 5am on Friday 13th November. Separate parking charges may apply on the Great Orme.

How to buy tickets:

- Online at www.walesrallygb.com
- Call 0844 847 2251 (max 8 tickets per transaction) open 08:00 - 20:00 Monday - Friday and 08:00 - 18:00 Saturday and Sunday, calls charged at Local Call Rate. Groups of 9 or more should call 0844 844 9990. Overseas callers should dial: +44 161 425 7560 and overseas callers looking to book for groups of 9 or more should call +44 161 425 7561.

For the latest news and updates follow Wales Rally GB on Twitter @walesrallygb, join the conversation at [facebook.com/walesrallygb](https://www.facebook.com/walesrallygb) or visit the website walesrallygb.com

9.2 Hospitality

Wales Rally GB will provide an official VIP hospitality facility at one selected stage each day:

Friday: Sweet Lamb

Saturday: Chirk Castle

Sunday: Brenig PowerStage

The official VIP hospitality package will provide a memorable day of top class entertainment, superb catering and dedicated viewing opportunities, all carefully managed by corporate hospitality specialist MatchPoint.

For further information or to book please contact MatchPoint:

Tel: +44 (0)2920 022838

Email: walesrallygb@matchpoint.co.uk

www.walesrallygb.com/hospitality

10. Accommodation

GTS Events Ltd, a subsidiary of Byrom plc, have been appointed as the official accommodation provider for Wales Rally GB. They will be known as Wales Rally GB Accommodation Services and would be delighted to help with accommodation requirements for the event organisers, competitors, media and spectators alike.

The company specialises in providing accommodation and logistical support to sporting events and have been involved in global sporting events since 1991.

For further information, please visit www.walesrallygbtravel.com or contact them at:

Tel: +44 (0)870 220 6039

E-mail: enquiries@walesrallygbtravel.com

11. Media

11.1 Contact Details Before the Rally

Jonathan Gill

National Press Officer - Wales Rally GB

High Barn

High Barn Road

Effingham

KT24 5PR

Telephone: +44 (0)1372 414120

Mobile: +44 (0)7860 563000

Email: media@walesrallygb.com

11.2 Accreditation Procedure, Criteria and Deadlines

The accreditation guidelines and criteria are published on the Wales Rally GB website:

www.walesrallygb.com/documents/2015_WRC_Accreditation_Procedure.pdf

Accreditation Deadlines
Wednesday 16 September
Media accreditation opens
Wednesday 14 October
Closing Date for UK Print Media, Internet Media, Radio & Photographers Media Accreditation
Wednesday 21 October
Closing date for International Print Media & Photographer accreditation

Please read the following guidelines carefully and make sure all the information requested is supplied with your accreditation application and it is posted to the appropriate address.

Failure to supply the requested information, or to sign the disclaimer, will delay the processing of your application.

Accreditation provides access to the media facilities in Rally HQ and the Service Park in Deeside and designated areas in Special Stages.

News and information can be supplied, free of charge, before, during and after the event to journalists and publications who are unable to attend the rally, or do not qualify for accreditation.

If you need help with your application please contact:

Jonathan Gill, National Press Officer

Tel: +44 (0)1372 414120

Email: media@walesrallygb.com

1. International Print Media & Photographers

Requests from International publications must be sent to the FIA Communications Department using the new online international rally-by-rally accreditation system on www.fia.com. International accreditation closes on Wednesday 21 October.

2. Accreditation Applications from all Television Broadcasters

Requests from TV broadcasters should be sent directly to the WRC Promoter: accreditation@wrc.com

3. Commercial Photographers

Requests from all commercial photographers should go directly to the WRC Promoter: accreditation@wrc.com. Applications should be submitted by Wednesday 21 October to allow time for approval.

4. United Kingdom Print Media, Internet Media, Radio & Photographers

Requests from the above must be sent by POST direct to the Wales Rally GB Accreditation Manager, using the form which can be downloaded from www.walesrallygb.com.

Wales Rally GB is allowed to nominate national/local radio stations to broadcast from the event. Internet media accreditation is only available for journalists not photographers.

Applications must arrive prior to Wednesday 14 October.

Guidelines and Information for Accreditation Applications

Up to a maximum of three (3) representatives per organisation will be considered for accreditation by the FIA. A separate application form should be submitted for each person to be accredited. A maximum of one (1) pass will be issued to websites (photo tabards are not issued to websites).

To be accredited, a publication must:

- i) have a circulation size and quality that satisfies the criteria of the FIA.
- ii) be on sale to the public.

The FIA considers the media pass to be a working tool to be used only by bona fide members of the press. Publishers, marketing personnel, sub-editors, staff of the publication's secretariat, etc. cannot be accredited as media.

Media passes can be allocated to general news, specialist, business and lifestyle consumer publications that do not intend to publish conventional rally reports but whose coverage is considered to be of promotional benefit to the sport. As a general rule, however, the FIA will not accredit publications less than one year old.

Accreditation for Press Photographers: The FIA provides 12 (twelve) photographer Tabards for UK-based Photographers. Priority will be given to national publications and agencies based on circulation, frequency and previous coverage of Wales Rally GB. All photographers must attend the FIA Media Delegate's special pre-event safety briefing (time tba) before being granted a tabard.

Additionally a limited number of media may be accredited to cover the Wales Rally GB National Rally but, again, strictly based on circulation, frequency and previous coverage of the National Rally.

Advertising, PR, marketing, or sponsor representatives are not eligible for accreditation.

Once applications have been processed by Wales Rally GB and approved by the FIA, a letter or email confirming successful accreditation will be sent to the applicant(s). This letter must be produced when collecting passes at the event. No pass(es) can be collected without this confirmation.

Please note that tighter restrictions on media accreditation will be in place for this year's event.

12. Useful Services

12.2 Deeside (Flintshire) Information

Tourist Information Centre

Flintshire Visitor Centre, Earl Road, Mold, CH7 1AP

Tel: 01352 759 331

Email: info@moldtouristinfo.co.uk

Air Travel

Deeside is easy to get to from Manchester International Airport (40 mins) and Liverpool John Lennon Airport (40 mins), with direct transfers by road, coach and train.

For further information visit:

www.manchesterairport.co.uk or www.liverpooljohnlennonairport.com

Car & Van Hire

Name	Phone Number	Website
Jolly Good Vehicle Rental, Deeside	01244 459104	www.jollygoodvanhire.co.uk
Deeside 4X4 Ltd, Deeside	01244 819444	www.deeside4x4.co.uk

12.3 Conwy Information

Tourist Information Centres

Llandudno, Library Building, Mostyn Street

Tel: 01492 577577

Email: llandudnotic@conwy.gov.uk

Conwy, Muriau Building, Rosehill Street, Conwy, LL32 8LD

Tel: 01492 577566

Email: conwytic@conwy.gov.uk

Car & Van Hire

Name	Phone Number	Website
Jolly Good Vehicle Rental, Colwyn Bay	01492 547461	www.jollygoodvanhire.co.uk



Appendix 1 Itineraries and Maps

(Route 1.2)

1.1	Friday Itinerary	16
	Friday Map.....	17
1.2	Saturday Itinerary	18
	Saturday Map	19
1.3	Sunday Itinerary	20
	Sunday Map.....	21
1.4	Special Stage routes compared to previous years.....	22
1.5	Reconnaissance Schedule (Version 1.2)	23

1.1 Friday Itinerary

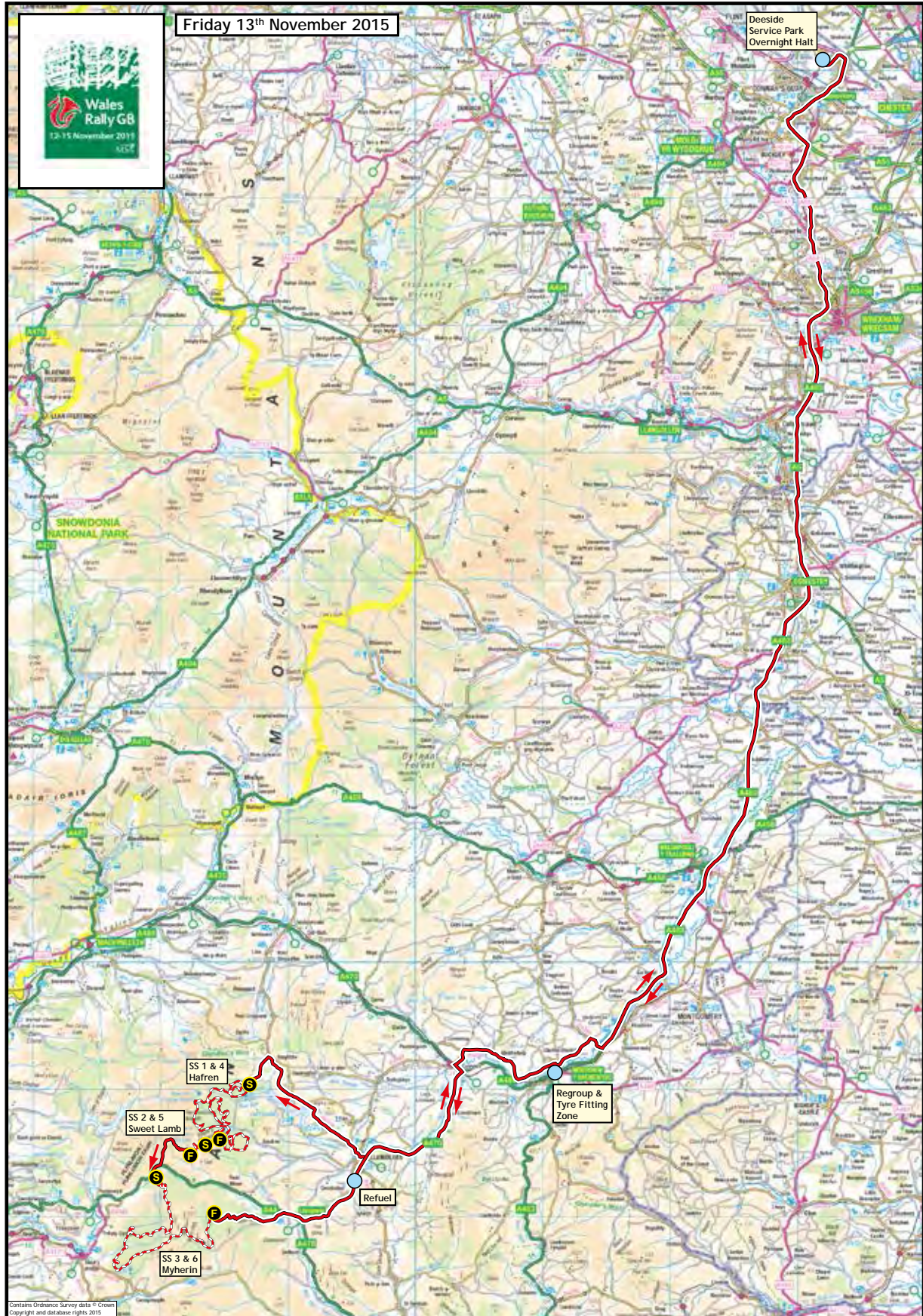
TC		Location	SS Dist.	Liaison Dist.	Total Dist.	Target	First Car
SS			Km.	Km.	Km.	Time	Due
2015 WALES RALLY GB							
					1.2	10 July 2015	
Ceremonial Start				Thursday 12 November 2015			
TC		Location	SS Dist.	Liaison Dist.	Total Dist.	Target	First Car
SS			Km.	Km.	Km.	Time	Due
		Ceremonial Start - Llandudno	-	-	-		18:30
Start (Sections 1 & 2)				Friday 13 November 2015			
TC		Location	SS Dist.	Liaison Dist.	Total Dist.	Target	First Car
SS			Km.	Km.	Km.	Time	Due
0		Start - Deeside	-	-	-		06:30
RZ		Refuel (FIA Fuel) - Deeside	-	-	-		
1		<i>Distance to next refuel</i>	(0.00)	(120.00)	(120.00)		
RZ		Refuel (FIA Fuel) - Llanidloes	-	120.00	-		
2		<i>Distance to next refuel</i>	(65.70)	(43.35)	(109.05)		
1			-	138.00	138.00	2:51	09:21
SS 1	Hafren 1		32.14	-	-		09:24
2			-	2.75	34.89	0:40	10:04
SS 2	Sweet Lamb 1		3.33	-	-		10:07
3			-	7.10	10.43	0:14	10:21
SS 3	Myherin 1		30.23	-	-		10:24
RZ		Refuel (FIA Fuel) - Llanidloes	-	15.50	-		
3		<i>Distance to next refuel</i>	(0.00)	(50.04)	(50.04)		
3A		Newtown Regroup & Technical Zone - In	-	41.00	71.23	1:30	11:54
3B		Newtown Regroup - Out	-	0.04	0.04	0:20	12:14
Tyre Fitting Zone (Newtown)			(65.70)	(188.89)	(254.59)	(00:15)	
RZ		Refuel (FIA Fuel) - Llanidloes	-	24.50	-		
4		<i>Distance to next refuel</i>	(65.70)	(43.35)	(109.05)		
4			-	42.50	42.50	1:10	13:24
SS 4	Hafren 2		32.14	-	-		13:27
5			-	2.75	34.89	0:40	14:07
SS 5	Sweet Lamb 2		3.33	-	-		14:10
6			-	7.10	10.43	0:14	14:24
SS 6	Myherin 2		30.23	-	-		14:27
6A		Tarenig	-	1.00	31.23	0:33	15:00
RZ		Refuel (FIA Fuel) - Llanidloes	-	14.50	-		
5		<i>Distance to next refuel</i>	(0.00)	(121.55)	(121.55)		
6B		Parc Fermé & Technical Zone - In	-	136.00	136.00	2:49	17:49
6C		Parc Fermé Out - Flexi Service - In	-	0.05	0.05	0:10	17:59
Flexi Service A (Deeside)			(65.70)	(189.40)	(255.10)	0:45	
6D		Flexi Service Out - Parc Fermé - In	-	-	-		(18:44)
RZ		Refuel (FIA Fuel) - Deeside	-	-	-		
6		<i>Distance to next refuel</i>	(37.20)	(117.50)	(154.70)		
All cars must be returned to Parc Fermé no later than							21:00
Friday Totals			131.40	378.29	509.69		
Sunrise - Hafren							07:33
Sunset - Myherin							16:27

© International Motor Sports Ltd. 2015 Not for publication without the written permission of IMS

Section 1

Section 2

Friday Map



1.2 Saturday Itinerary

TC		Location	SS Dist. Km.	Liaison Dist. Km.	Total Dist. Km.	Target Time	First Car Due
SS							
6E		Parc Fermé - Out Service - In	-	-	-		05:00
		Service B (Deeside)	-	-	-	0:15	
6F		Service - Out	-	-	-		05:15
7			-	107.50	107.50	2:13	07:28
SS 7		Gartheiniog 1	11.34	-	-		07:31
8			-	8.00	19.34	0:24	07:55
SS 8		Dyfi 1	25.86	-	-		07:58
RZ		Refuel (FIA Fuel) - Ceinws	-	2.00	-		
7		<i>Distance to next refuel</i>	<i>(37.20)</i>	<i>(36.33)</i>	<i>(73.53)</i>		
8A		Corris Regroup & Technical Zone - In	-	8.99	34.85	0:42	08:40
8B		Corris Regroup - Out	-	0.04	0.04	0:30	09:10
9			-	19.30	19.30	0:25	09:35
SS 9		Gartheiniog 2	11.34	-	-		09:38
10			-	8.00	19.34	0:24	10:02
SS 10		Dyfi 2	25.86	-	-		10:05
RZ		Refuel (FIA Fuel) - Ceinws	-	2.00	-		
8		<i>Distance to next refuel</i>	<i>(32.93)</i>	<i>(131.50)</i>	<i>(164.43)</i>		
11			-	58.50	84.36	1:40	11:45
SS 11		Dyfnant 1	19.02	-	-		11:48
12			-	25.50	44.52	0:56	12:44
SS 12		Aberhrrnant 1	13.91	-	-		12:47
RZ		Refuel (FIA Fuel) - Oswestry	-	49.50	-		
9		<i>Distance to next refuel</i>	<i>(2.06)</i>	<i>(114.38)</i>	<i>(116.44)</i>		
13			-	64.30	78.21	1:35	14:22
SS 13		Chirk Castle	2.06	-	-		14:25
13A		Regroup & Technical Zone - In	-	46.52	48.58	1:01	15:26
13B		Regroup - Out & Service - In	-	0.06	0.06	0:10	15:36
		Service C - (Deeside)	(109.39)	(346.71)	(456.10)	0:30	
13C		Service - Out	-	-	-		16:06
RZ		Refuel (FIA Fuel) - Oswestry	-	53.00	-		
10		<i>Distance to next refuel</i>	<i>(32.89)</i>	<i>(145.03)</i>	<i>(177.92)</i>		
14			-	103.50	103.50	2:08	18:14
SS 14		Dyfnant 2	19.02	-	-		18:17
15			-	25.50	44.52	0:56	19:13
SS 15		Aberhrrnant 2	13.87	-	-		19:16
15A		Parc Fermé & Technical Zone - In	-	69.00	82.87	1:43	20:59
15B		Parc Fermé Out - Flexi Service - In	-	0.03	0.03	0:10	21:09
		Flexi Service D (Deeside)	(32.89)	(198.03)	(230.92)	0:45	
15C		Flexi Service Out - Parc Fermé - In	-	-	-		(21:54)
		All cars must be returned to Parc Fermé no later than					00:15
Saturday Totals			142.28	544.74	687.02		
						Sunrise - Gartheiniog	07:36
						Sunset - Aberhrrnant	16:23

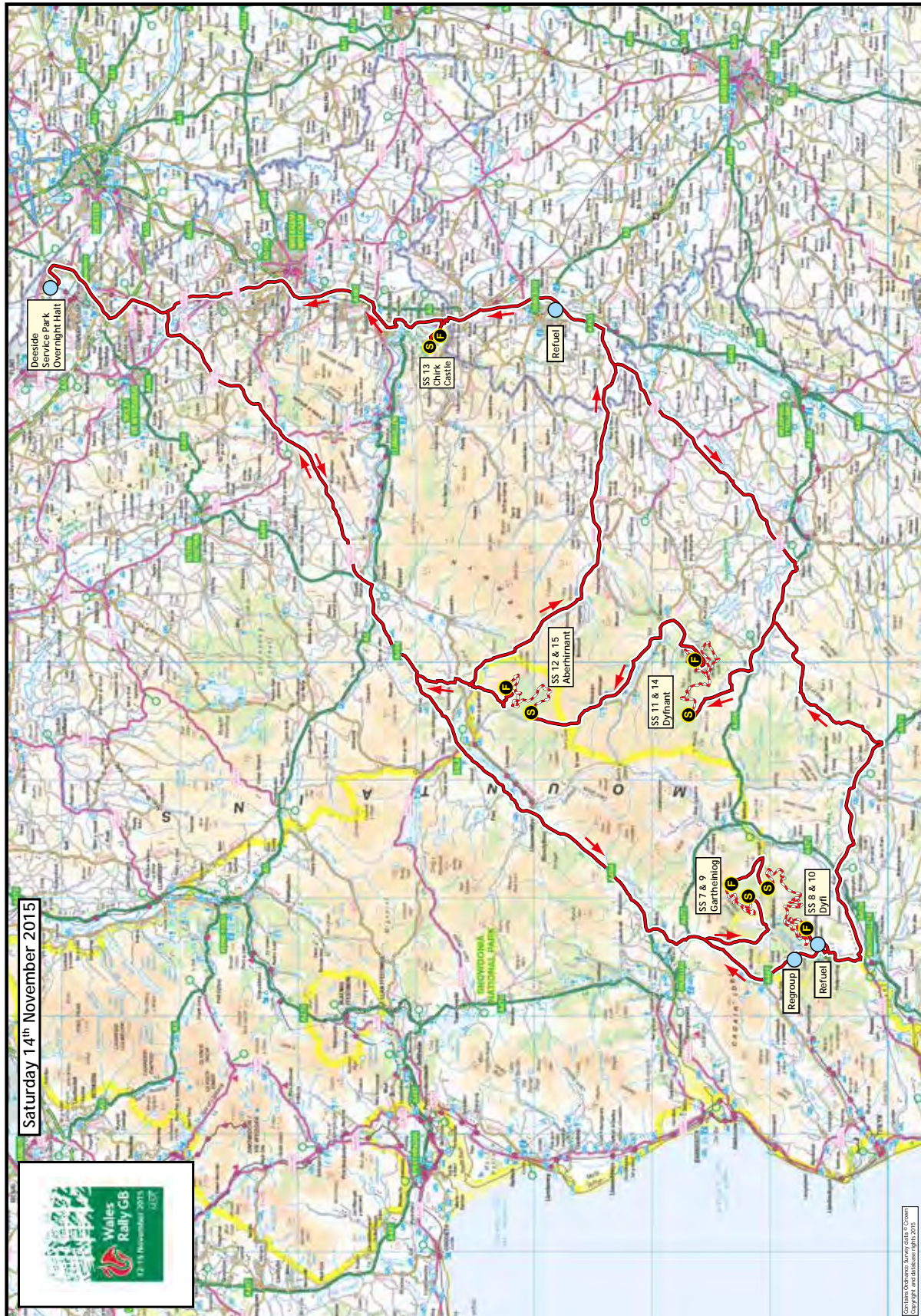
© International Motor Sports Ltd. 2015 Not for publication without the written permission of IMS

Section 3

Section 4

Section 5

Saturday Map



1.3 Sunday Itinerary

TC		Location	SS Dist.	Liaison Dist.	Total Dist.	Target	First Car
SS			Km.	Km.	Km.	Time	Due
15D	Parc Fermé - Out Service - In		-	-	-		07:00
Service E (Deeside)			-	-	-	0:15	
15E	Service - Out		-	-	-		07:15
RZ	Refuel (FIA Fuel) - Deeside		-	-	-		
11	<i>Distance to next refuel</i>		(25.75)	(118.40)	(144.15)		
16			-	54.30	54.30	1:08	08:23
SS 16	Brenig 1		10.60	-	-		08:26
17			-	8.00	18.60	0:24	08:50
SS 17	Alwen		10.41	-	-		08:53
18			-	52.00	62.41	1:15	10:08
SS 18	Great Orme		4.74	-	-		10:11
18A	Llandudno Regroup & Technical Zone In		-	3.60	8.34	0:12	10:23
18B	Llandudno Regroup - Out		-	0.10	0.10	0:34	10:57
RZ	Refuel (FIA Fuel) - Llandudno		-	0.40	-		
12	<i>Distance to next refuel</i>		(10.60)	(110.65)	(121.25)		
19			-	55.00	55.00	1:08	12:05
SS 19	Brenig 2 (Power Stage)		10.60	-	-		12:08
19A	Technical Zone - In		-	56.00	66.60	1:23	13:31
19B	Service - In		-	0.05	0.05	0:03	13:34
Service F (Deeside)			(36.35)	(229.05)	(265.40)	0:10	
19C	Service - Out		-	-	-		13:44
		Finish Podium	-	-	-		
Sunday Totals			36.35	229.05	265.40		
						Sunrise - Brenig	07:38
						Sunset - Deeside	16:18

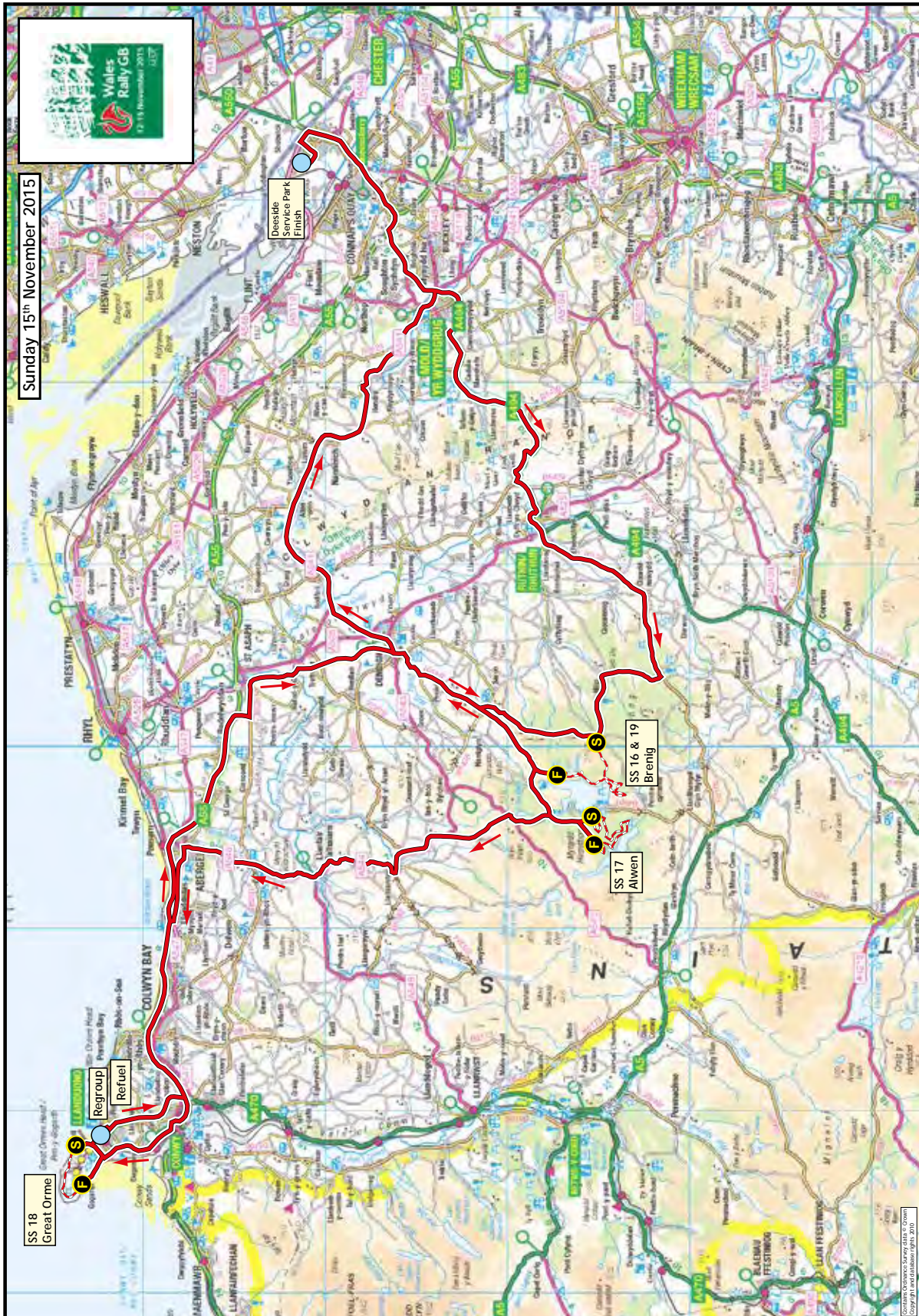
TOTALS OF THE RALLY					
	SS	Liaison	Total		%
Friday 13 November					
Sections 1 & 2 - 6 SS	131.40	378.29	509.69		25.8%
Saturday 14 November					
Sections 3, 4 & 5 - 9 SS	142.28	544.74	687.02	<i>% of Special Stages</i>	20.7%
Sunday 15 November					
Sections 6 & 7 - 4 SS	36.35	229.05	265.40		13.7%
Total - 19 SS	310.03	1152.08	1462.11		21.2%

© International Motor Sports Ltd. 2015 Not for publication without the written permission of IMS

Section 6

Section 7

Sunday Map



1.4 Special Stage routes compared to previous years

Stage		Length	Comparison
Shakedown	Clocaenog	0.00 - 3.32	Identical route to 2014 shakedown
SS 1 & 4	Hafren	0.00 - 18.36	2014 - SS 3 & 7 (0.00 - 18.36)
		18.36 - 32.14	2013 - SS 4 & 7 (18.36 - 32.14)
SS 2 & 5	Sweet Lamb	0.00 - 0.38	New stage
		0.38 - 1.44	2013 - SS 5 & 8 (0.00 - 1.06)
		1.44 - 3.33	2014 - SS 3 & 7 (21.63 - 23.55. New FF location)
SS 3 & 6	Myherin	0.00 - 15.73	2013 - SS 6 & 9 (0.00 - 15.73)
		15.73 - 18.85	New stage
		18.85 - 30.22	2013 - SS 6 & 9 (17.56 - 28.93)
SS 7 & 9	Gartheiniog	0.00 - 11.34	Identical route to 2014 - SS1 & 5. New FF location
SS 8 & 10	Dyfi	0.00 - 10.68	2014 - SS 2 & 6 (0.00 - 10.68)
		10.68 - 14.62	New stage
		14.62 - 25.86	2014 - SS 2 & 6 (10.68 - 21.90)
SS 11 & 14	Dyfnant	0.00 - 16.72	2013 - SS 14 & 17 (0.00 - 16.73)
		16.72 - 17.21	New stage
		17.21 - 19.02	2014 - SS 12 & 17 (1.68 - 3.49. New FF location)
SS 12 & 15	Aberhirnant	0.00 - 4.93	New stage
		4.93 - 13.91	2013 - SS 18 (3.79 - 12.77)
SS 13	Chirk Castle	0.00 - 2.06	Identical route to 2014 - SS 13
SS 16 & 19	Brenig	0.00 - 10.60	Identical route to 2014 - SS 18 & 23. New FF location
SS 17	Alwen	0.00 - 10.41	New stage (reverse of 2014 - SS 19 & 22)
SS 18	Great Orme	0.00 - 4.74	Identical route to 2011 - SS 1

1.5 Reconnaissance Schedule - Version 1.2

Tuesday 10 th November							
Opens			Closes	Stage	Kilometres		
Priority 1 & 2	Priority 3	All Drivers			SS	To Next SS	Total
07:30	08:00	08:30		SS 18 Great Orme	4.74	4.00	
			10:10	SS 18 Great Orme	4.74	65.00	
08:30	09:15	09:55		Shakedown	3.32	1.97	
			11:30	Shakedown	3.32	5.20	
09:00	09:45	10:20		SS 16/19 Brenig	10.55	13.03	
			12:10	SS 16/19 Brenig	10.55	7.80	
09:45	10:30	11:05		SS 17 Alwen	10.41	3.00	
			12:55	SS 17 Alwen	10.41	36.50	
10:40	11:25	12:05		SS 12/15 Aberhirnant	13.91	6.80	
			13:55	SS 12/15 Aberhirnant	13.91	50.00	
12:10	12:55	13:35		SS 11/14 Dyfnant	19.02	30.50	
			15:40	SS 11/14 Dyfnant	19.02	55.00	
14:20	15:05	15:45		SS 13 Chirk Castle	2.06	3.05	
			17:15	SS 13 Chirk Castle	2.06		
					128.02	281.85	409.87
Wednesday 11 th November							
08:00	08:45	09:25		SS 7/9 Gartheiniog	11.34	8.00	
08:20	09:05	09:45		SS 8/10 Dyfi	25.86	11.00	
			12:00	SS 7/9 Gartheiniog	11.34	8.00	
			12:20	SS 8/10 Dyfi	25.86	31.20	
10:20	11:05	11:45		SS 1/4 Hafren	32.14	3.01	
10:55	11:40	12:20		SS 2/5 Sweet Lamb	2.90	7.20	
11:05	11:50	12:30		SS 3/6 Myherin	30.22	35.20	
			15:00	SS 1/4 Hafren	32.14	3.01	
			15:35	SS 2/5 Sweet Lamb	2.90	7.20	
			15:45	SS 3/6 Myherin	30.22		
					204.92	113.82	318.74



Appendix 2 WRGB National Rally

1. Format

- The WRGB National rally will be a three day event on Friday, Saturday & Sunday.
- All stages used by the WRC event will be used once.
- Competitors will be invited to take part in the WRC Ceremonial Start on Thursday evening, but this is not compulsory.
- Servicing will be alongside the WRC teams in the Deeside Service Park.
- The Finish Ceremony will be at Deeside Service Park on Sunday afternoon, on the WRC podium.

2. Timetable

Thursday 10 September		
Supplementary Regulations published. Entries open		
Monday 19 October		
Closing date for entries		

Thursday 12 November		
07.00 - 20.30	Rally Office open	Service Park, Deeside
10.00 - 14.00	Scrutineering and Documentation for competitors taking part in the Ceremonial Start	Rally Office, Service Park and Coleg Cambria, Connah's Quay, Deeside CH5 4BR
16.00 - 21.00	Scrutineering and Documentation for competitors NOT taking part in the Ceremonial Start	Rally Office, Service Park and Coleg Cambria, Connah's Quay, Deeside CH5 4BR
18.30	Ceremonial Start	Mostyn Street, Llandudno
Friday 13 November		
08.40	Start of Section 1	Service Park, Deeside
15.56	End of Section 1	Service Park, Deeside
Saturday 14 November		
08.50	Start of Section 2	Service Park, Deeside
16.37	End of Section 2	Service Park, Deeside
Sunday 15 November		
09.30	Start of Section 3	Service Park, Deeside
15.33	Finish of Rally	Service Park, Deeside
16.00	Podium and Prize-giving	Service Park, Deeside
17.00	Publication of provisional classification	Rally Office, Service Park

3. Eligibility

This will be a National B stage rally for cars complying with MSA Technical Regulations including classes for cars complying with MSA and FIA Historic Regulations.

4. Entry Fee

Wales Rally GB National: £832.50 + VAT @ 20% = £999.00

5. Entry Acceptance Procedure

The maximum number of entries will be 85. If less than 75 entries are received for the International event, the number of National entries accepted may be increased.

Entries will be allocated on a first come, first served basis, but only once payment has been received.

Your entry into the event is only confirmed once you have official notification from the organisers. Please note that if you have not received an official confirmation of your entry within five days, please contact the organisers.

6. Entry Package

	National
Vehicle Plates	
Guest	2
Service	2
Passes	
Guest	4
Service	6
Administration	
Road Book	1
Rally Guide 2	2
Route Map	2
Official Programme	4
Service Park Area	8 x 8m

7. Reconnaissance

No reconnaissance of the special stages is permitted for National competitors. Competitors may use subjective route notes purchased from:

Brian & Liz Patterson

Tel: +44 (0)2890 844111, Email: pattpace@aol.com, Web: www.rallynews.net

8. Service Park

The Service Park opens at 08.00 on Thursday 12 November. There will be no access before this time.

9. Fuel

Competitors will be permitted to refuel in the following manner:

1. Commercially available pump fuel dispensed from pumps at filling stations marked in the road book.
2. Fuel supplied by the operator of the Refuelling Zones marked in the road book and the Service Park.

10. Servicing


The Service Park will be in Deeside. Management or auxiliary service cars will be prohibited on the event.

There will be no overnight Parc Fermé.

Generators are permitted in the Service Park however these must be super silent diesel or LPG. Generators must be fenced off to restrict access to competent personnel only.

NO PETROL GENERATORS ARE PERMITTED ON THE SITE AT ANY TIME

Wales Rally GB National Itinerary

TC		Location	SS Dist.	Liaison Dist.	Total Dist.	Target Time	First Car Due																																																																																																																																																																																
SS			Miles	Miles	Miles																																																																																																																																																																																		
 <p style="text-align: center;">2015 WRGB NATIONAL RALLY</p>																																																																																																																																																																																							
					N 1.2	10 July 2015																																																																																																																																																																																	
Ceremonial Start																																																																																																																																																																																							
Thursday 12 November 2015																																																																																																																																																																																							
<table border="1" style="width: 100%;"> <thead> <tr> <th colspan="2">TC</th> <th>Location</th> <th>SS Dist.</th> <th>Liaison Dist.</th> <th>Total Dist.</th> <th>Target Time</th> <th>First Car Due</th> </tr> <tr> <th colspan="2">SS</th> <th></th> <th>Miles</th> <th>Miles</th> <th>Miles</th> <th></th> <th></th> </tr> </thead> <tbody> <tr> <td colspan="2"></td> <td>Ceremonial Start - Llandudno</td> <td style="text-align: center;">-</td> <td style="text-align: center;">-</td> <td style="text-align: center;">-</td> <td></td> <td style="text-align: center;">18:30</td> </tr> </tbody> </table>								TC		Location	SS Dist.	Liaison Dist.	Total Dist.	Target Time	First Car Due	SS			Miles	Miles	Miles					Ceremonial Start - Llandudno	-	-	-		18:30																																																																																																																																																								
TC		Location	SS Dist.	Liaison Dist.	Total Dist.	Target Time	First Car Due																																																																																																																																																																																
SS			Miles	Miles	Miles																																																																																																																																																																																		
		Ceremonial Start - Llandudno	-	-	-		18:30																																																																																																																																																																																
Start (Section 1)																																																																																																																																																																																							
Friday 13 November 2015																																																																																																																																																																																							
<table border="1" style="width: 100%;"> <thead> <tr> <th colspan="2">TC</th> <th>Location</th> <th>SS Dist.</th> <th>Liaison Dist.</th> <th>Total Dist.</th> <th>Target Time</th> <th>First Car Due</th> </tr> <tr> <th colspan="2">SS</th> <th></th> <th>Miles</th> <th>Miles</th> <th>Miles</th> <th></th> <th></th> </tr> </thead> <tbody> <tr> <td>0</td> <td></td> <td>Start - Deeside</td> <td style="text-align: center;">-</td> <td style="text-align: center;">-</td> <td style="text-align: center;">-</td> <td></td> <td style="text-align: center;">08:40</td> </tr> <tr> <td>RZ</td> <td></td> <td>Refuel (FIA Fuel) - Deeside</td> <td style="text-align: center;">-</td> <td style="text-align: center;">-</td> <td style="text-align: center;">-</td> <td></td> <td></td> </tr> <tr> <td>1</td> <td></td> <td><i>Distance to next refuel</i></td> <td style="text-align: center;">(0.00)</td> <td style="text-align: center;">(74.56)</td> <td style="text-align: center;">(74.56)</td> <td></td> <td></td> </tr> <tr> <td>RZ</td> <td></td> <td>Refuel (FIA Fuel) - Llanidloes</td> <td style="text-align: center;">-</td> <td style="text-align: center;">74.56</td> <td style="text-align: center;">-</td> <td></td> <td></td> </tr> <tr> <td>2</td> <td></td> <td><i>Distance to next refuel</i></td> <td style="text-align: center;">(40.82)</td> <td style="text-align: center;">(26.94)</td> <td style="text-align: center;">(67.76)</td> <td></td> <td></td> </tr> <tr> <td>1</td> <td></td> <td></td> <td style="text-align: center;">-</td> <td style="text-align: center;">85.75</td> <td style="text-align: center;">85.75</td> <td style="text-align: center;">2:51</td> <td style="text-align: center;">11:31</td> </tr> <tr> <td>SS 1</td> <td></td> <td>Hafren</td> <td style="text-align: center;">19.97</td> <td style="text-align: center;">-</td> <td style="text-align: center;">-</td> <td></td> <td style="text-align: center;">11:34</td> </tr> <tr> <td>2</td> <td></td> <td></td> <td style="text-align: center;">-</td> <td style="text-align: center;">1.71</td> <td style="text-align: center;">21.68</td> <td style="text-align: center;">0:40</td> <td style="text-align: center;">12:14</td> </tr> <tr> <td>SS 2</td> <td></td> <td>Sweet Lamb</td> <td style="text-align: center;">2.07</td> <td style="text-align: center;">-</td> <td style="text-align: center;">-</td> <td></td> <td style="text-align: center;">12:17</td> </tr> <tr> <td>3</td> <td></td> <td></td> <td style="text-align: center;">-</td> <td style="text-align: center;">4.41</td> <td style="text-align: center;">6.48</td> <td style="text-align: center;">0:14</td> <td style="text-align: center;">12:31</td> </tr> <tr> <td>SS 3</td> <td></td> <td>Myherin</td> <td style="text-align: center;">18.78</td> <td style="text-align: center;">-</td> <td style="text-align: center;">-</td> <td></td> <td style="text-align: center;">12:34</td> </tr> <tr> <td>6A</td> <td></td> <td>Tarenig</td> <td style="text-align: center;">-</td> <td style="text-align: center;">0.62</td> <td style="text-align: center;">19.41</td> <td style="text-align: center;">0:33</td> <td style="text-align: center;">13:07</td> </tr> <tr> <td>RZ</td> <td></td> <td>Refuel (FIA Fuel) - Llanidloes</td> <td style="text-align: center;">-</td> <td style="text-align: center;">9.01</td> <td style="text-align: center;">-</td> <td></td> <td></td> </tr> <tr> <td>3</td> <td></td> <td><i>Distance to next refuel</i></td> <td style="text-align: center;">(0.00)</td> <td style="text-align: center;">(75.50)</td> <td style="text-align: center;">(75.50)</td> <td></td> <td></td> </tr> <tr> <td>6B</td> <td></td> <td>Deeside - In</td> <td style="text-align: center;">-</td> <td style="text-align: center;">84.51</td> <td style="text-align: center;">84.51</td> <td style="text-align: center;">2:49</td> <td style="text-align: center;">15:56</td> </tr> <tr> <td>RZ</td> <td></td> <td>Refuel (FIA Fuel) - Deeside</td> <td style="text-align: center;">-</td> <td style="text-align: center;">-</td> <td style="text-align: center;">-</td> <td></td> <td></td> </tr> <tr> <td>4</td> <td></td> <td><i>Distance to next refuel</i></td> <td style="text-align: center;">(24.39)</td> <td style="text-align: center;">(89.21)</td> <td style="text-align: center;">(113.61)</td> <td></td> <td></td> </tr> <tr> <td colspan="3">Friday Totals</td> <td style="text-align: center;">40.82</td> <td style="text-align: center;">177.00</td> <td style="text-align: center;">217.82</td> <td></td> <td></td> </tr> <tr> <td colspan="6"></td> <td>Sunrise - Hafren</td> <td style="text-align: center;">07:33</td> </tr> <tr> <td colspan="6"></td> <td>Sunset - Myherin</td> <td style="text-align: center;">16:27</td> </tr> </tbody> </table>								TC		Location	SS Dist.	Liaison Dist.	Total Dist.	Target Time	First Car Due	SS			Miles	Miles	Miles			0		Start - Deeside	-	-	-		08:40	RZ		Refuel (FIA Fuel) - Deeside	-	-	-			1		<i>Distance to next refuel</i>	(0.00)	(74.56)	(74.56)			RZ		Refuel (FIA Fuel) - Llanidloes	-	74.56	-			2		<i>Distance to next refuel</i>	(40.82)	(26.94)	(67.76)			1			-	85.75	85.75	2:51	11:31	SS 1		Hafren	19.97	-	-		11:34	2			-	1.71	21.68	0:40	12:14	SS 2		Sweet Lamb	2.07	-	-		12:17	3			-	4.41	6.48	0:14	12:31	SS 3		Myherin	18.78	-	-		12:34	6A		Tarenig	-	0.62	19.41	0:33	13:07	RZ		Refuel (FIA Fuel) - Llanidloes	-	9.01	-			3		<i>Distance to next refuel</i>	(0.00)	(75.50)	(75.50)			6B		Deeside - In	-	84.51	84.51	2:49	15:56	RZ		Refuel (FIA Fuel) - Deeside	-	-	-			4		<i>Distance to next refuel</i>	(24.39)	(89.21)	(113.61)			Friday Totals			40.82	177.00	217.82									Sunrise - Hafren	07:33							Sunset - Myherin	16:27
TC		Location	SS Dist.	Liaison Dist.	Total Dist.	Target Time	First Car Due																																																																																																																																																																																
SS			Miles	Miles	Miles																																																																																																																																																																																		
0		Start - Deeside	-	-	-		08:40																																																																																																																																																																																
RZ		Refuel (FIA Fuel) - Deeside	-	-	-																																																																																																																																																																																		
1		<i>Distance to next refuel</i>	(0.00)	(74.56)	(74.56)																																																																																																																																																																																		
RZ		Refuel (FIA Fuel) - Llanidloes	-	74.56	-																																																																																																																																																																																		
2		<i>Distance to next refuel</i>	(40.82)	(26.94)	(67.76)																																																																																																																																																																																		
1			-	85.75	85.75	2:51	11:31																																																																																																																																																																																
SS 1		Hafren	19.97	-	-		11:34																																																																																																																																																																																
2			-	1.71	21.68	0:40	12:14																																																																																																																																																																																
SS 2		Sweet Lamb	2.07	-	-		12:17																																																																																																																																																																																
3			-	4.41	6.48	0:14	12:31																																																																																																																																																																																
SS 3		Myherin	18.78	-	-		12:34																																																																																																																																																																																
6A		Tarenig	-	0.62	19.41	0:33	13:07																																																																																																																																																																																
RZ		Refuel (FIA Fuel) - Llanidloes	-	9.01	-																																																																																																																																																																																		
3		<i>Distance to next refuel</i>	(0.00)	(75.50)	(75.50)																																																																																																																																																																																		
6B		Deeside - In	-	84.51	84.51	2:49	15:56																																																																																																																																																																																
RZ		Refuel (FIA Fuel) - Deeside	-	-	-																																																																																																																																																																																		
4		<i>Distance to next refuel</i>	(24.39)	(89.21)	(113.61)																																																																																																																																																																																		
Friday Totals			40.82	177.00	217.82																																																																																																																																																																																		
						Sunrise - Hafren	07:33																																																																																																																																																																																
						Sunset - Myherin	16:27																																																																																																																																																																																
© International Motor Sports Ltd. 2015 Not for publication without the written permission of IMS																																																																																																																																																																																							
Re-Start (Section 2)																																																																																																																																																																																							
Saturday 14 November 2015																																																																																																																																																																																							
<table border="1" style="width: 100%;"> <thead> <tr> <th colspan="2">TC</th> <th>Location</th> <th>SS Dist.</th> <th>Liaison Dist.</th> <th>Total Dist.</th> <th>Target Time</th> <th>First Car Due</th> </tr> <tr> <th colspan="2">SS</th> <th></th> <th>Miles</th> <th>Miles</th> <th>Miles</th> <th></th> <th></th> </tr> </thead> <tbody> <tr> <td>6F</td> <td></td> <td>Deeside - Out</td> <td style="text-align: center;">-</td> <td style="text-align: center;">-</td> <td style="text-align: center;">-</td> <td></td> <td style="text-align: center;">08:50</td> </tr> <tr> <td>13</td> <td></td> <td></td> <td style="text-align: center;">-</td> <td style="text-align: center;">27.50</td> <td style="text-align: center;">27.50</td> <td style="text-align: center;">0:55</td> <td style="text-align: center;">09:45</td> </tr> <tr> <td>SS 13</td> <td></td> <td>Chirk Castle</td> <td style="text-align: center;">1.28</td> <td style="text-align: center;">-</td> <td style="text-align: center;">-</td> <td></td> <td style="text-align: center;">09:48</td> </tr> <tr> <td>7</td> <td></td> <td></td> <td style="text-align: center;">-</td> <td style="text-align: center;">55.50</td> <td style="text-align: center;">56.78</td> <td style="text-align: center;">1:54</td> <td style="text-align: center;">11:42</td> </tr> <tr> <td>SS 7</td> <td></td> <td>Gartheiniog</td> <td style="text-align: center;">7.05</td> <td style="text-align: center;">-</td> <td style="text-align: center;">-</td> <td></td> <td style="text-align: center;">11:45</td> </tr> <tr> <td>8</td> <td></td> <td></td> <td style="text-align: center;">-</td> <td style="text-align: center;">4.97</td> <td style="text-align: center;">12.02</td> <td style="text-align: center;">0:24</td> <td style="text-align: center;">12:09</td> </tr> <tr> <td>SS 8</td> <td></td> <td>Dyfi</td> <td style="text-align: center;">16.07</td> <td style="text-align: center;">-</td> <td style="text-align: center;">-</td> <td></td> <td style="text-align: center;">12:12</td> </tr> <tr> <td>RZ</td> <td></td> <td>Refuel (FIA Fuel) - Ceinws</td> <td style="text-align: center;">-</td> <td style="text-align: center;">1.24</td> <td style="text-align: center;">-</td> <td></td> <td></td> </tr> <tr> <td>5</td> <td></td> <td><i>Distance to next refuel</i></td> <td style="text-align: center;">(20.46)</td> <td style="text-align: center;">(57.48)</td> <td style="text-align: center;">(77.94)</td> <td></td> <td></td> </tr> <tr> <td>11</td> <td></td> <td></td> <td style="text-align: center;">-</td> <td style="text-align: center;">36.35</td> <td style="text-align: center;">52.42</td> <td style="text-align: center;">1:40</td> <td style="text-align: center;">13:52</td> </tr> <tr> <td>SS 11</td> <td></td> <td>Dyfnant</td> <td style="text-align: center;">11.82</td> <td style="text-align: center;">-</td> <td style="text-align: center;">-</td> <td></td> <td style="text-align: center;">13:55</td> </tr> <tr> <td>12</td> <td></td> <td></td> <td style="text-align: center;">-</td> <td style="text-align: center;">15.84</td> <td style="text-align: center;">27.66</td> <td style="text-align: center;">0:56</td> <td style="text-align: center;">14:51</td> </tr> <tr> <td>SS 12</td> <td></td> <td>Aberhrrnant</td> <td style="text-align: center;">8.64</td> <td style="text-align: center;">-</td> <td style="text-align: center;">-</td> <td></td> <td style="text-align: center;">14:54</td> </tr> <tr> <td>13A</td> <td></td> <td>Deeside - In</td> <td style="text-align: center;">-</td> <td style="text-align: center;">42.87</td> <td style="text-align: center;">51.52</td> <td style="text-align: center;">1:43</td> <td style="text-align: center;">16:37</td> </tr> <tr> <td colspan="3">Saturday Totals</td> <td style="text-align: center;">44.86</td> <td style="text-align: center;">183.04</td> <td style="text-align: center;">227.90</td> <td></td> <td></td> </tr> <tr> <td colspan="6"></td> <td>Sunrise - Gartheiniog</td> <td style="text-align: center;">07:36</td> </tr> <tr> <td colspan="6"></td> <td>Sunset - Aberhrrnant</td> <td style="text-align: center;">16:23</td> </tr> </tbody> </table>								TC		Location	SS Dist.	Liaison Dist.	Total Dist.	Target Time	First Car Due	SS			Miles	Miles	Miles			6F		Deeside - Out	-	-	-		08:50	13			-	27.50	27.50	0:55	09:45	SS 13		Chirk Castle	1.28	-	-		09:48	7			-	55.50	56.78	1:54	11:42	SS 7		Gartheiniog	7.05	-	-		11:45	8			-	4.97	12.02	0:24	12:09	SS 8		Dyfi	16.07	-	-		12:12	RZ		Refuel (FIA Fuel) - Ceinws	-	1.24	-			5		<i>Distance to next refuel</i>	(20.46)	(57.48)	(77.94)			11			-	36.35	52.42	1:40	13:52	SS 11		Dyfnant	11.82	-	-		13:55	12			-	15.84	27.66	0:56	14:51	SS 12		Aberhrrnant	8.64	-	-		14:54	13A		Deeside - In	-	42.87	51.52	1:43	16:37	Saturday Totals			44.86	183.04	227.90									Sunrise - Gartheiniog	07:36							Sunset - Aberhrrnant	16:23																								
TC		Location	SS Dist.	Liaison Dist.	Total Dist.	Target Time	First Car Due																																																																																																																																																																																
SS			Miles	Miles	Miles																																																																																																																																																																																		
6F		Deeside - Out	-	-	-		08:50																																																																																																																																																																																
13			-	27.50	27.50	0:55	09:45																																																																																																																																																																																
SS 13		Chirk Castle	1.28	-	-		09:48																																																																																																																																																																																
7			-	55.50	56.78	1:54	11:42																																																																																																																																																																																
SS 7		Gartheiniog	7.05	-	-		11:45																																																																																																																																																																																
8			-	4.97	12.02	0:24	12:09																																																																																																																																																																																
SS 8		Dyfi	16.07	-	-		12:12																																																																																																																																																																																
RZ		Refuel (FIA Fuel) - Ceinws	-	1.24	-																																																																																																																																																																																		
5		<i>Distance to next refuel</i>	(20.46)	(57.48)	(77.94)																																																																																																																																																																																		
11			-	36.35	52.42	1:40	13:52																																																																																																																																																																																
SS 11		Dyfnant	11.82	-	-		13:55																																																																																																																																																																																
12			-	15.84	27.66	0:56	14:51																																																																																																																																																																																
SS 12		Aberhrrnant	8.64	-	-		14:54																																																																																																																																																																																
13A		Deeside - In	-	42.87	51.52	1:43	16:37																																																																																																																																																																																
Saturday Totals			44.86	183.04	227.90																																																																																																																																																																																		
						Sunrise - Gartheiniog	07:36																																																																																																																																																																																
						Sunset - Aberhrrnant	16:23																																																																																																																																																																																
© International Motor Sports Ltd. 2015 Not for publication without the written permission of IMS																																																																																																																																																																																							

Section 1

Section 2

TC		Location	SS Dist.	Liaison Dist.	Total Dist.	Target	First Car
SS			Miles	Miles	Miles	Time	Due
15E		Deeside - Out	-	-	-		09:30
RZ		Refuel (FIA Fuel) - Deeside	-	-	-		
6		<i>Distance to next refuel</i>	(9.41)	(74.86)	(84.27)		
17			-	40.00	40.00	1:22	10:52
SS 17		Alwen	6.47	-	-		10:55
18			-	32.31	38.78	1:15	12:10
SS 18		Great Orme	2.95	-	-		12:13
18A		Llandudno Regroup - In	-	2.24	5.18	0:12	12:25
18B		Llandudno Regroup - Out	-	0.06	0.06	0:34	12:59
RZ		Refuel (FIA Fuel) - Llandudno	-	0.25	-		
7		<i>Distance to next refuel</i>	(6.59)	(68.72)	(75.31)		
19			-	34.18	34.18	1:08	14:07
SS 19		Brenig	6.59	-	-		14:10
19A		Deeside - In	-	34.80	41.38	1:23	15:33
		Finish Podium	-	-	-		
Sunday Totals			16.00	143.58	159.58		
						Sunrise - Brenig	07:38
						Sunset - Deeside	16:18

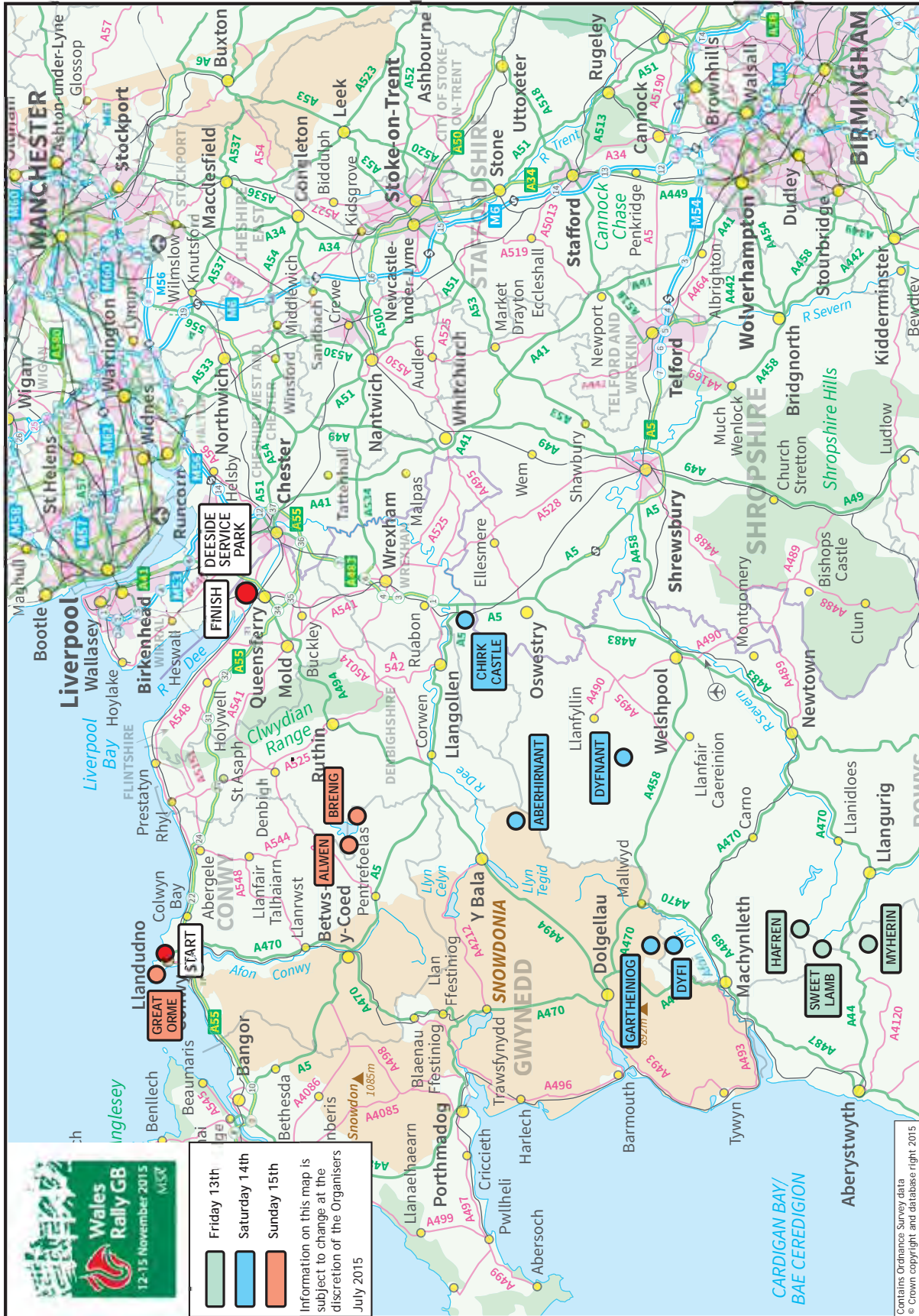
TOTALS OF THE RALLY					
	SS	Liaison	Total	% of Special Stages	%
Friday 13 November	40.82	177.00	217.82		18.7%
Section 1 - 3 SS					
Saturday 14 November	44.86	183.04	227.90		19.7%
Section 2 - 5 SS					
Sunday 15 November	16.00	143.58	159.58		10.0%
Sections 3 & 4 - 3 SS					
Total - 11 SS	101.68	503.62	605.30		16.8%

© International Motor Sports Ltd. 2015 Not for publication without the written permission of IMS

Section 3

Section 4

Wales Rally GB National Route Map



WALES RALLY GB

WOULD LIKE TO THANK THE FOLLOWING

EVENT PARTNERS



Cymru
Wales



Llywodraeth Cymru
Welsh Government



CONWY
CYNGOR BWRDEISTREF SIROL
COUNTY BOROUGH COUNCIL



Cyfoeth
Naturiol
Cymru
Natural
Resources
Wales

VENUE PARTNERS



Ymddiriedolaeth
Genedlaethol
National Trust



Welsh Automotive Forum
Fforwm Madural Cymru

TOYOTA
MANUFACTURING UK



EVENT SUPPLIERS

Performance
Clothing

jolly
goodvanhire

RallyStageTeam



WALES RALLY GB . COM