

# SUPPLEMENTARY REGULATIONS



6 to 9 April 2017

@TourDeCorseWRC TourDeCorse

[www.tourdecorse.com](http://www.tourdecorse.com)





## SUPPLEMENTARY REGULATIONS

### SUPPLEMENTARY REGULATIONS

- \* FIA World Rally Championship for Drivers
- \* FIA World Rally Championship for Co-drivers
- \* FIA World Rally Championship for Manufacturers
  
- \* FIA WRC 2 Championship for Drivers
- \* FIA WRC 2 Championship for Co-drivers
- \* FIA WRC 2 Championship for Teams
  
- \* FIA WRC 3 Championship for Drivers
- \* FIA WRC 3 Championship for Co-drivers
- \* FIA WRC 3 Championship for Teams
  
- \* FIA Junior WRC Championship for Drivers
- \* FIA Junior WRC Championship for Co-drivers
  
- \* FIA WRC Trophy for Drivers
- \* FIA WRC Trophy for Co-drivers
  
- \* FIA RGT Cup for Drivers
- \* FIA RGT Cup for Co-drivers

Organised by the  
**FEDERATION FRANCAISE DU SPORT AUTOMOBILE**



## SUPPLEMENTARY REGULATIONS

1	<u>INTRODUCTION</u>	5
2	<u>ORGANISATION</u>	5
3	<u>PROGRAMME</u>	8
4	<u>ENTRIES</u>	12
5	<u>INSURANCE</u>	15
6	<u>ADVERTISING AND IDENTIFICATION</u>	16
7	<u>TYRES</u>	17
8	<u>FUEL</u>	19
9	<u>RECONNAISSANCE</u>	19
10	<u>ADMINISTRATIVE CHECKS</u>	21
11	<u>SCRUTINEERING, SEALING &amp; MARKING</u>	21
12	<u>OTHER PROCEDURES</u>	23
13	<u>IDENTIFICATION OF OFFICIALS</u>	26
14	<u>PRIZES</u>	27
15	<u>FINAL CHECKS &amp; PROTESTS</u>	27

## APPENDIX

APPENDIX I: ITINERARY	28
APPENDIX II: RECONNAISSANCE SCHEDULE	32
APPENDIX III: COMPETITOR RELATIONS OFFICERS	33
APPENDIX IV: COMPETITION NUMBERS & ADVERTISING	34
APPENDIX V: OVERALLS, HELMETS & OTHER SAFETY REQUIREMENTS	35
ANNEXE VI: RGT CARS TYRES	36
APPENDIX VII: SPECIFIC ITEMS NATIONAL CARS	38

## SUPPLEMENTARY REGULATIONS

### 1 INTRODUCTION

#### 1/1 Regulations

This rally will be run in compliance with the FIA International Sporting Code and its appendices, the 2017 FIA World Rally Championship Sporting Regulations (FIA-WRC), the National Sporting Regulations which comply with the FIA regulations, and these Supplementary Regulations (SR).

Modifications, amendments and/or changes to these Supplementary Regulations will be announced only by numbered and dated Bulletins (issued by the organiser or the Stewards).

Additional information will be published in Rally Guide 2, issued on Monday, 6 March 2017.

Specific items regarding only the French “National Cars” category are shown in GREY.

The 2017 FIA-WRC Sporting Regulations (FIA-WRC) can be found on the website:  
<http://www.fia.com/regulation/category/119>

#### 1/2 Road surface

All stages will be run on asphalt.

#### 1/3 Overall SS distance and total distance of the itinerary

SS total distance: 316,80 km

Itinerary total distance: 1 081,37 km

### 2 ORGANISATION

#### 2/1 FIA titles for which this rally counts

- \* FIA World Rally Championship for Drivers
- \* FIA World Rally Championship for Co-drivers
- \* FIA World Rally Championship for Manufacturers
- \* FIA WRC 2 Championship for Drivers
- \* FIA WRC 2 Championship for Co-drivers
- \* FIA WRC 2 Championship for Teams
- \* FIA WRC 3 Championship for Drivers
- \* FIA WRC 3 Championship for Co-drivers
- \* FIA WRC 3 Championship for Teams
- \* FIA Junior WRC Championship for Drivers
- \* FIA Junior WRC Championship for Co-drivers
- \* FIA WRC Trophy for Drivers
- \* FIA WRC Trophy for Co-drivers
- \* FIA RGT Cup for Drivers
- \* FIA RGT Cup for Co-drivers

#### 2/2 Visa numbers - FIA and ASN

- FIA visa n°: 4WRC/020217

- FFSA visa n°: 112 issued on: 31/01/2017

## SUPPLEMENTARY REGULATIONS

### 2/3 Organiser's name and contact details

#### Organiser:

#### Che Guevara Energy Drink Tour de Corse (permanent rally office)

Fédération Française du Sport Automobile

ZA Baleone centre – RN194 – 20167 Sarrola-Carcopino - France

Tel: +33 (0)495 290 100 Fax: +33 (0)495 290 101

E-mail: [tourdecorse@ffsa.org](mailto:tourdecorse@ffsa.org) Website: [www.tourdecorse.com](http://www.tourdecorse.com)

Opening hours: Monday to Thursday: 09:00 / 12:30 - 14:00 / 17:00  
Friday: 09:00 / 12:30 - 14:00 / 16:00

#### Competitors department:

Tel: +33 (0)495 290 100 Fax: +33 (0)495 290 101

Cathy DEROUSSEAU - [cderousseaux@ffsa.org](mailto:cderousseaux@ffsa.org)

#### Marketing and Sales department:

Tel: +33 (0)144 302 443 Fax: +33 (0)142 241 743

Nicolas SEJOURNE - [nsejourne@ffsa.org](mailto:nsejourne@ffsa.org)

#### Permanent Rally staff:

Rally Director	David SERIEYS	<a href="mailto:davidserieys@ffsa.org">davidserieys@ffsa.org</a>
Marketing and Sales Manager	Nicolas SEJOURNE	<a href="mailto:nsejourne@ffsa.org">nsejourne@ffsa.org</a>
Press Attaché & Communication	Flora FORNASARI	<a href="mailto:ffornasari@ffsa.org">ffornasari@ffsa.org</a>
Ceremonies and Routes Manager	Guillaume FARNY	<a href="mailto:gfarny@ffsa.org">gfarny@ffsa.org</a>
Logistics Coordinator	Julien QUINONERO	<a href="mailto:jquinonero@ffsa.org">jquinonero@ffsa.org</a>
Manufacturers & Teams relationships,	Vincent LAVERNE	<a href="mailto:vlaverne@club-internet.fr">vlaverne@club-internet.fr</a>
Sport Compliance Manager		
Safety Manager	Valérie LÉBOUCHER	<a href="mailto:vlébucher@ffsa.org">vlébucher@ffsa.org</a>
Service Park & Infrastructures Manager	Sébastien JOIGNE	<a href="mailto:sjoigne@ffsa.org">sjoigne@ffsa.org</a>

### 2/4 Organisation Committee

Nicolas DESCHAUX	President of the FFSA
Dominique SERIEYS	General Director of the FFSA
José ANDREANI	President of the Ligue Corse du Sport Automobile
Christian LECA	Member
Jacques REGIS	Member

### 2/5 Stewards of the meeting

Chairman	Waltraud WUNSCH (DEU)	FIA
Member	Kai TARKIAINEN (FIN)	FIA
Member	Christian LECA (FRA)	ASN
Secretary of the Stewards	Yvonne GILLI	FIA

## SUPPLEMENTARY REGULATIONS

### 2/6 FIA Delegates

FIA Sporting Delegate  
FIA Safety Delegate  
FIA Medical Delegate  
FIA Technical Delegate  
FIA Assistant Technical Delegates

Arnaud CREPIN  
Michèle MOUTON  
Dr Jean DUBY  
Jérôme TOQUET  
Lionel BERARD  
Clement CLERC  
Luca GIBELLO  
Karmo UUSMAA  
Hayley GALLAGHER

FIA Media Delegate

### 2/7 Senior Officials

#### Rally Control:

Clerk of the Course  
Deputy Clerk of the Course  
Assistants Clerk of the Course (Special Stages)

Patrick BOUTEILLER  
Gilbert GIRAUD  
Pascal BATTE  
Jean-Marc ROGER  
Danièle HARTL  
Jean-Louis GACHINARD  
Jérôme GARDIA  
Yves GUILLOU

Rally Control Secretary  
Delegates at the subsidiaries Rally Offices

Delegate at the administrative checks  
and at the Service Park

#### Other officials:

Safety Manager & Spectators Safety Manager  
Deputy Spectators Safety Manager  
FFSA Technical Delegate  
Assistant to FFSA Technical Delegate  
Judges of Facts

Jannick DAUBIGNE  
Yveline GUILLOU  
Laurent CHAMARD  
Christian BONIN  
Bernard COUSIN  
Jacques PAOLI  
Marie PAOLI  
Dominique RIOUX  
Vincent LAVERNE  
Jean-Marie KREMPFF  
Daniel BALDASSARI  
Vincent FATTACCIO  
Jean-François LIENERE  
Jean WAMBACH  
Dr Olivier BALDESI  
Dr Jean-François AMOROS  
Elvira BONDURAND  
Hélène LARIVIERE  
Sébastien JOIGNE  
Pierre BOÏ  
Valérie LÉBOUCHER  
Guillaume FARNY  
Marc BERST

Manufacturers & Teams Relationships  
Competitor Relations Officers

Chief Medical Officer  
Deputy Medical Officer  
Secretary of the Rally  
National Press Officer  
Service Park & Infrastructures Manager  
Chief of the Marshals  
Chief of the Spectators Safety Marshals  
Ceremonies & Route Manager  
Telecommunications Manager

Officials of National Cars category: see SR Appendix VII.

## SUPPLEMENTARY REGULATIONS

### 2/8 HQ location

Rally HQ:

**Bastia airport** Zone Aéroport de Bastia Poretta - 20290 Lucciana  
 N42°32.635' / E009°28.860'  
 E-mail: [tourdecorse@ffsa.org](mailto:tourdecorse@ffsa.org) - Website: [www.tourdecorse.com](http://www.tourdecorse.com)

Subsidiary Rally Offices:

**Ajaccio** (Thursday, 6 April):  
 Place Miot - 20000 Ajaccio  
 N41°54.830' / E008°43.740'

**Porticcio** (Friday, 7 April):  
 Centre Culturel - Mairie Annexe - 20166 Porticcio  
 N41°53.505' / E008°48.295'

Official Notice Board (ONB): Rally HQ

All publications will also be posted on the Notice Boards at subsidiary Rally Offices during their opening hours, and on the organiser's website [www.tourdecorse.com](http://www.tourdecorse.com). Such publications shall be for information only (no official character).

## 3 PROGRAMME

### 3/1 Schedule before the rally week

WHEN	WHAT
Upon issue of Supplementary Regulations	Opening date for entries
At the latest on Thursday, 2 February	Issue of Supplementary Regulations
Friday, 24 February	Closing date for helicopter registration (registration form available on website)
Friday, 3 March	Deadline for application for use of two-way radios
Monday, 6 March	Closing date for entries Issuing of Road Book, map and Rally Guide 2 (website) Closing date for entries in reconnaissance only
Friday, 10 March	Closing date for national Media Accreditations
Wednesday, 15 March	Closing date for foreign Media Accreditations Closing date for FIA and FFSA fuel orders
Friday, 17 March	Publication of entry list in seeded order
Monday, 20 March	Deadline for material and Service Park requests including adjacent service areas requests Publication of Media Safety Book



## SUPPLEMENTARY REGULATIONS

### 3/2 Schedule during the rally week

<b>Sunday, 2 April</b>	11:00 / 12:30 13:30 / 22:00	Rally Office opening hours	Rally HQ Bastia airport
	14:00 / 21:30	Administrative Checks, collection of materials and documents and registration for reconnaissance according to schedule (except Manufacturers)	Rally Office Bastia airport
	14:00 / 21:30	Registration for reconnaissance for Manufacturers (by arrangement)	Rally Office Bastia airport
	14:00 / 21:30	Collection of GPS tracker system for reconnaissance at Administrative Checks	Rally Office Bastia airport
<b>Monday, 3 April</b>	07:30 / 12:30 13:30 / 20:00	Rally Office opening hours	Rally HQ Bastia airport
	07:30	Opening of the Service Park for Manufacturers, and P1 drivers' teams	Bastia airport
	07:45 / 18:20	Reconnaissance (see schedule in appendix II)	
	14:00	Opening of Service Park for P2, P3, RGT and non-priority drivers' teams	Bastia airport
<b>Tuesday, 4 April</b>	07:15 / 12:30 13:30 / 20:00	Rally Office opening hours	Rally HQ Bastia airport
	07:30 / 17:45	Reconnaissance (see schedule in appendix II)	
	12:00 / 18:00	Media Accreditation Center opening hours	Aéroparc Bastia airport
	14:00 / 20:00	Collection of FIA Safety Tracking Systems	SIT Sports' truck Bastia airport
	14:00 / 20:00	Administrative Checks and collection of materials and documents for Manufacturers (by arrangement)	Rally Office Bastia airport
<b>Wednesday, 5 April</b>	07:15 / 12:30 13:30 / 22:00	Rally Office opening hours	Rally HQ Bastia airport
	07:30 / 14:50	Reconnaissance (see schedule in appendix II)	
	08:00 / 11:45	Technical sealing for Manufacturers' cars	Service Park Bastia airport
	09:00 / 19:00	Media Accreditation Center opening hours	Aéroparc Bastia airport
	09:00 / 20:00	Media Center opening hours	Rally HQ Bastia airport
	09:30 / 11:00	Collection of FIA Safety Tracking Systems (P2/P3/RGT/NP)	SIT Sports' truck Bastia airport
	11:00 / 12:15	Scales available for Manufacturers (technical scrutineering zone)	Iveco Bastia airport

## SUPPLEMENTARY REGULATIONS

Wednesday, 5 April	13:30 / 21:30	Scrutineering / marking and sealing for all cars <u>except</u> Manufacturers' cars and National Cars	Iveco Bastia airport
	16:00	Team Managers meeting (Manufacturers & WRC Teams)	Rally HQ Bastia airport
	16:00 / 19:00	Reconnaissance GPS tracker system return (not for Route Note Cars users)	SIT Sports' truck Bastia airport
	16:30 / 20:00	Scrutineering / marking and sealing for National Cars	Service Park Bastia airport
	21:00	Deadline to return the reconnaissance control card	Rally Office Bastia airport
Thursday, 6 April	07:15 / 20:30	Rally Office opening hours	Rally HQ Bastia airport
	07:30 / 19:00	Media Accreditation Center opening hours	Aéroparc Bastia airport
	07:30 / 21:00	Media Center opening hours	Rally HQ Bastia airport
	08:00 / 09:30	Mandatory shakedown for P1 drivers	Sorbo Ocagnano
	09:30 / 11:30	Optional shakedown for P1, P2, P3 & RGT drivers	Sorbo Ocagnano
	11:30 / 14:00	Optional shakedown for non-priority drivers	Sorbo Ocagnano
	12:00	Meet the Crew's shakedown Session	Service Park Bastia airport
	12:30	Pre-event FIA Press Conference	Rally HQ Bastia airport
	14:00	Publication of start lists for Ceremonial Start & Section 1	ONB
	15:30 / 20:30	Subsidiary Rally Office opening hours	Place Miot Ajaccio
	16:00 / 22:30	Media Accreditation Center opening hours Subsidiary Media Center opening hours	Town hall Ajaccio
	17:30 / 18:00	Autograph session for Regional drivers (details in RG2, and list of participants by COC communication)	Place Miot Ajaccio
	17:40	Photo-shoot for Priority drivers (details in RG2, and list of participants by COC communication)	Place Miot Ajaccio
	18:00	Helicopter pilots' Briefing	Airport - Ajaccio
	18:00 / 18:30	Autograph session for Priority drivers (details in RG2, and list of participants by COC communication)	Place Miot Ajaccio
18:30 / 20:00	Ceremonial start and cars to enter Parc Fermé (details in RG2)	Place Miot Ajaccio	

## SUPPLEMENTARY REGULATIONS

Friday, 7 April	07:15 / 16:00	Subsidiary Rally Office opening hours Subsidiary Media Center opening hours	Centre Culturel Porticcio
	07:15 / 00:30	Rally Office opening hours	Rally HQ Bastia airport
	07:45 / 00:30	Media Center opening hours	Rally HQ Bastia airport
	08:15	Start of Section 1	Parc Fermé Ajaccio
	08:15 / 19:00	Media Accreditation Center opening hours	Aéroparc Bastia airport
	19:25 / ...	Autograph session for selected drivers (details in RG2)	Place St Nicolas Bastia
	22:30	Publication of Start list for Section 3	ONB
Saturday, 8 April	06:30 / 22:45	Rally Office opening hours	Rally HQ Bastia airport
	06:45 / 22:45	Media Center opening hours	Rally HQ Bastia airport
	07:30	Start Section 3	Parc Fermé Bastia airport
	17:50 / ...	Autograph session for selected drivers (details in RG2)	Place St Nicolas Bastia
	21:45	Publication of start list for Section 5	ONB
Sunday, 9 April	06:15 / 30' after publication of the Official Final Classification	Rally Office opening hours	Rally HQ Bastia airport
	06:30 / last journalist departure	Media Center opening hours	Rally HQ Bastia airport
	07:15	Start Section 5	Parc Fermé Bastia airport
	10:00 / last photographer departure	Photographer's Room opening hours	Community center Porto-Vecchio
	12:46	Rally Finish	TC10A
	13:30	Podium Ceremony & Prize-giving	La Marina Porto-Vecchio
	17:00	Post-event FIA Press Conference	Rally HQ Bastia airport
	17:00	Final Scrutineering	Iveco Bastia airport
	17:30	All cars must be in Parc Fermé	Parc Fermé Bastia airport
	17:45	Publication of the provisional final classification	ONB
	18:00	Deadline to return the FIA rally safety tracking systems and Route Note Car GPS tracker systems	SIT Sports' truck Bastia airport

## SUPPLEMENTARY REGULATIONS

### 4 ENTRIES

#### 4/1 Closing date for entries

Monday, 6 mars 2017, at 23:59 CET

#### 4/2 Entry procedure

Anybody wishing to take part in Che Guevara Energy Drink Tour de Corse 2017 must fill in the electronic entry form before the closing date. This applies to ALL competitors.

This entry form is available on the event website at [www.tourdecorse.com](http://www.tourdecorse.com) under “competitors” section.

By sending this electronic form, the competitor and the crew undertake to abide by the rules and regulations of the competition, as well as the prescriptions of FIA-WRC Art. 21.5 and the present Supplementary Regulations.

Competitors will sign the entry form at the Administrative checks.

Competitors entered in the FIA WRC 2 and WRC 3 championships, or in the WRC Trophy, must indicate their intention to collect points in the Che Guevara Energy Drink Tour de Corse for the relevant championship or trophy by checking either “WRC 2”, “WRC 3” or “WRC Trophy” boxes on the electronic entry form.

Competitors wishing to compete in the Che Guevara Energy Drink Tour de Corse with a National Car (\*) must check the appropriate “Class / Group” box on the electronic entry form.

(\*) see list of eligible cars in SR Appendix VII.

If a competitor cannot complete the entry electronically, he must contact the permanent Rally Office before close of entries for further instructions.

Only complete applications accompanied by the full entry fee will be considered.

Foreign competitors, drivers and codrivers who wish to take part in Tour de Corse can only do so with the approval of their own ASN.

#### 4/3 Number of competitors accepted and Classes

##### 4/3/1 Number of competitors

The maximum number of competitors is set at 140 cars.

Competitors who submit an entry form may only consider that their entry has been accepted once they have received official written confirmation from the Organiser.

## SUPPLEMENTARY REGULATIONS

### 4/3/2 Classes of cars

CLASSES	GROUPS
RC1	World Rally Cars: 1.6 T engine
RC2	S2000-Rally: 1.6 T engine with a 28mm restrictor
	S2000-Rally: 2.0 Atmospheric
	Group R5 (VR5)
	Group NR4 over 2000cc (current N4)
RGT	RGT Cars
RC3	Group A over 1600cc and up to 2000cc
	Super 1600
	R2 (atmo over 1600cc and up to 2000cc – VR2C and turbo over 1067cc and up to 1333cc – VR2C)
	R3 (atmo over 1600cc and up to 2000cc – VR3C and turbo over 1067cc and up to 1333cc – VR3C)
	R3 (turbo / up to 1620cc / nominal – VR3T)
	R3 (diesel / up to 2000cc / nominal – VR3D)
RC4	Group A up to 1600cc
	R2 (atmo over 1390cc and up to 1600cc – VR2B and turbo over 927cc and up to 1067cc- VR2B)
	Kit-car up to 1600cc
	Group N over 1600cc and up to 2000cc
RC5	Group N up to 1600cc
	R1 (atmo up to 1600cc - VR1A / VR1B and turbo up to 1067cc – VR1A / VR1B)

Groups and classes of National Cars: see SR Appendix VII

### 4/4 Entry fees and packages

#### 4/4/1 Entry fees (VAT is not applicable)

Manufacturers, WRC Trophy, WRC 2 & WRC 3:  
See FIA-WRC Appendix VI.

	without organiser's optional advertising:
• Additional car serviced in the Manufacturer area by a Manufacturer	€8 695
• WRC Trophy	€7 695
• WRC 2 & WRC 3	€5 935



## SUPPLEMENTARY REGULATIONS

### Other competitors:

	organiser's optional advertising with:	without:
• Junior WRC	€2 950	€4 950
• Legal Competitor *	€5 300	€7 300
• Private Competitor **	€3 200	€5 200
• National *** Legal Competitor * or National *** Private Competitor **	€1 300	€2 600
• Corsican **** National *** Legal Competitor * or Corsican**** National *** Private Competitor **	€1 200	€2 400

\* the competing car is entered by a team, company or other legal entity.

\*\* the competing car is entered by the driver or the co-driver.

\*\*\* French crew licensed in France (minimum ICCCR FFSA licenses).

\*\*\*\* French driver licensed in Corsica motorsport regional league.

To encourage FFSA licensed French drivers to participate in their round of the World Rally Championship, the FFSA applies a reduced entry fee (which is taken into account in the above indicated price).

### 4/4/2 Packages

Manufacturers, WRC Trophy, WRC 2, WRC 3 & additional car(s) serviced in the Manufacturer area by a Manufacturer: see FIA-WRC Appendix VI.

Junior WRC: see Junior WRC promoter.

RGT drivers (\*) and non-priority drivers (NP):

(\*) RGT drivers will receive Legal Competitor package.

	Legal Competitor (RGT & NP)	Private Competitor (NP)
Service park area approx. (**)	10 x 10 m	8 x 10 m
<b>Documents</b>		
Supplementary Regulations	2 (1)	1 (1)
Road Book	2 (1)	1 (1)
Rally Guide 2	Website	Website
Route Maps	4 (1)	2 (1)
Road Book reconnaissances	1	1
Programme	5	2
<b>Vehicle Plates</b>		
Service	1	1
Auxiliary	2	1
Guest	1	0
Tyre Fitting Zone	1	1
Route note car	1 (if WRC car)	1 (if WRC car)
<b>Passes</b>		
Guest	6	2
Team	6	6
Tyre Fitting Zone	1	1
Driver	2	2

(..) = number of copies sent to the Team Manager 4 weeks before the start of the rally.

(\*\*) Additional space and adjacent service areas in the Service Park or additional Auxiliary vehicle plates can be reserved no later than Monday, 20 March. See conditions in respective forms on website.

## SUPPLEMENTARY REGULATIONS

### 4/5 Payment details

#### a) by credit card

Via secured online payment

#### b) by bank transfer

- Account holder: FFSA
- Bank: HSBC
- Domiciliation: HSBC CBC INSTITUTIONNELS
- Bank Code: 30056
- Code Bank: 00123
- Account number: 01230011213
- RIB key: 89
- BIC: CCFRFRPP
- IBAN: FR76 3005 6001 2301 2300 1121 389

Any Transfer Fees are charged to the sender.

The proof of transfer must be attached to the electronic entry form before the closing date of the entries.

Please ensure that the entrant's name and account holder are included as reference on all bank transfers.

### 4/6 Refunds

Entry fees will only be refunded:

- a) to competitors whose entry has not been accepted,
- b) if the Che Guevara Energy Drink Tour de Corse does not take place.

## 5 INSURANCE

In accordance with the general prescriptions governing sporting events and competitions on the public roads in France, the Organiser will take out an insurance policy with an approved company.

The general conditions of this policy will notably stipulate the guarantee granted per accident involving bodily injury and per accident involving damage to private property in accordance with the general legal prescriptions and regulations.

Entry fees include the insurance premium which guarantees competitors' cover for liability to third parties (all physical injury and damage to property) to a limit of €15.550.800 per incident.

The above competitor insurance will become effective from the start of the technical scrutineering until the end of the rally <sup>(1)</sup> for those competitors finishing the rally.

<sup>(1)</sup> "end of the rally" = opening of the Parc Fermé after the publication of the final official classification.

In the case of retirement for the day only (Friday or Saturday), the cover will remain effective until the car arrives at the Service Park using the rally route and driven by one of the two crew members or by the designated optional driver according SR Art.12/16. The cover will cease 4 hours before the start of the next section after the overnight regroup if the car concerned has not be returned to Parc Fermé before that deadline.



## SUPPLEMENTARY REGULATIONS

In the case of final retirement, exclusion or disqualification, the cover will cease at the time of the final retirement, exclusion or disqualification unless the final retirement occurs during a special stage in which case cover shall cease when the car arrives at the Service Park (using the rally route and driven by one of the two crew members or by the designated optional driver according SR Art.12/16) but without exceeding the time of the end of the rally.

Moreover, in case of an accident, competitors or their representative must report the incident in writing to the Organiser within three days at the latest. In case a recovery service is used either on a special stage or on a road section, expenses will be incurred by the competitor.

Service and/or auxiliary vehicles, « route note cars », « weather » vehicles and vehicles used by competitors for reconnaissance purposes are not considered as officially taking part in the Rally even if they have registered with or bear identification associating them with the Rally. They are not covered by the Organiser's insurance policy and remain the sole responsibility of their owners.

## 6 ADVERTISING AND IDENTIFICATION

### 6/1 Advertising

#### 6/1/1 Restrictions

Competitors are allowed to affix any kind of advertising to their cars, in respect of FIA-WRC Art. 18.7.1.

All publicity or advertising, whether direct or indirect, for tobacco/alcohol, or for products related to tobacco/alcohol, as well as any free distribution of samples is forbidden (Article 2, Law N°91-32 dated 10/01/1991, relating to the fight against nicotine and alcohol addiction).

#### 6/1/2 Organiser's advertising

- a) Mandatory advertising on rally plates and competition numbers: Igo!
- b) Optional advertising: Che Guevara Energy Drink

### 6/2 Competition numbers

The Organiser will provide each crew with competition numbers and with rally plates in compliance with FIA-WRC Art. 18. Rally plates and competition numbers must be affixed to the cars for the whole duration of the competition.

Following the requirement of the French traffic rules regarding the identification of the rally cars (decree n°2012-312 of 5/03/2012 which modifies the article R.411-29 of French traffic rules and the laws of 14/03/2012 & 28/03/2012) identification of all rally cars will be by two numbers (210mm x 140mm) to be fixed at the front and the rear of the car as supplied by the organiser of the rally.

The identification number is the same as the competitor N° for the rally. It is valid only during the rally and on the rally itinerary.

These two numbers must be used in place of the usual registration plates which must be removed or concealed. The above rule applies also to foreign registered rally cars.

See Appendix IV of these Supplementary Regulations.

Failure to comply with this regulation will result in a penalty of €160 for the first observation, and €320 in case of recurring violation.

Competitors must present their cars to scrutineering with rally plates, competition number and mandatory and optional advertising, where applicable, applied to the car.



## SUPPLEMENTARY REGULATIONS

### 7 TYRES

#### 7/1 Tyres specified for use during the rally

In addition to complying with FIA-WRC Art. 60 & 61, the following type of tyre are confirmed for use:

- **All competitors entered with a WRC car:**  
List 2 (see FIA-WRC Art 60.2.1).
- **All competitors entered with an S2000-RALLY car or with an R5 cars, all priority drivers entered with a Group N car:**  
List 1 (see FIA-WRC Art. 60.3.1).

FIA Nominated Tyre Manufacturer	List 2 tyres (FIA WRC Art 60.2.1)	List 1 tyres (FIA WRC Art. 60.3.1)	Compound
Michelin	20/65 18 Pilot Sport H5	20/65 18 Pilot Sport R H3	Hard
	20/65 18 Pilot Sport S5	20/65 18 Pilot Sport R S	Soft
	18/65 18 Pilot Sport FW3 R 18/65 18 Pilot Sport FW3 L	18/65 18 Pilot Sport FW3 R 18/65 18 Pilot Sport FW3 L	Wet
D-Mack	Grippa 225/40R18 DMT-RC22 H6+	Grippa 225/40R18 DMT-RC22 H6+	Hard
	Grippa 225/40R18 DMT-RC22 S6+	Grippa 225/40R18 DMT-RC22 S6+	Soft
	Grippa 225/40R18 DMT-W W5+	Grippa 225/40R18 DMT-W W5+	Wet

- **All competitors entered with a Junior WRC car:**

FIA Nominated Tyre Manufacturer	Tyre	Compound
D-Mack	TBA	Hard
	TBA	Soft

- **For all others competitors (RC3 (excepted JWRC), RC4 and RC5, and for all non-priority drivers entered with a Group N car :**

tyres according to the drawings of the « 2017 list of eligible asphalt tyres for FIA rallies » (link: : <http://www.fia.com/regulation/category/117>).

- **National Cars:** see SR Appendix VII.

#### **For all competitors:**

- any combination of the different compounds is allowed.
- the use of hand cut tyres is prohibited.

## SUPPLEMENTARY REGULATIONS

### 7/2 Tyres quantity

	List 2 tyres (FIA WRC Art 60.2.1) WRC cars only	List 1 tyres (FIA WRC Art. 60.3.1) P2 drivers Non-Priority drivers of 4WD cars S2000-Rally	JWRC
Hard	28	26	TBA
Soft	22	20	TBA
Wet	8	8	TBA
<b>Maximum Allocated / No participation to Shakedown</b>	<b>28</b>	<b>26</b>	<b>TBA</b>
Extra if shakedown carried out	4	4	TBA
Maximum Allocated / Only in case of participation to Shakedown	32	30	TBA

**National Cars:** see SR Appendix VII.

**All other competitors:** the total allocated is 26, plus 4 extra tyres is shakedown carried out.

### 7/3 Tyres for use on reconnaissance

See FIA-WRC Art. 25.2.

### 7/4 Tyre Fitting Zones (TFZ)

The length of the tyre transport vehicle permitted in the adjacent parking is limited to 7 meters.

Each transport vehicle must be fitted with a specific TFZ car pass supplied by the organizer.

TFZ 1 & 2 (Porticcio): because the slope, a wedge of wood to block the wheel will be made available to the crew in each bay by the organiser.

### 7/5 Waiver for RGT cars

FIA-WRC App. V A / Tarmac Tyre Regulations § 2.9 will not apply for R-GT cars tyres.

Therefore, see in SR Appendix VI the two drawings which are also eligible for the rally.

This also applies to GT series and GT+ National cars.

## SUPPLEMENTARY REGULATIONS

### 8 FUEL

**All priority P1, P2 & P3 drivers** must use FIA fuel as provided by the FIA appointed supplier. The supplier appointed by the FIA is Panta Distribuzione S.p.A. which is authorized to carry out fuel ordering, supply and refuel services.

**All Non-priority drivers & RGT priority drivers** must use either:

- FIA fuel following the same conditions and rules as the priority drivers,
- or FFSA fuel (commercial Super Unleaded 98 fuel) as provided by the FFSA appointed supplier. The supplier appointed by the FFSA is Panta Distribuzione S.p.A. which is authorized to carry out fuel ordering, supply and refuel services.

**All competitors** must ensure their cars carry sufficient fuel between refuel points (SR Appx 1) to complete the distance shown in the itinerary plus have at least 3 liters for any fuel sample checks (FIA-WRC Art. 59.3.4).

Any addition of any product to the authorized fuels (FIA fuel & FFSA fuel) is strictly forbidden.

#### 8/1 Ordering procedure

The cost of the FIA fuel including refuelling services is 5,00 € (VAT excl.) per liter.  
The cost of the FFSA fuel including refuelling services is 2,30 € (VAT excl.) per liter.

Order forms are available at [www.tourdecorse.com](http://www.tourdecorse.com).

They must be e-mailed to [fuelorder@panta.it](mailto:fuelorder@panta.it), or faxed to +39 0373 235156.

Competitors must place their fuel order no later than Wednesday, 15 March 2017.

It is a condition of supply that payment must be received in full before Thursday, 30 March before delivery can be made.

The balance for any unused fuel will be refunded after the rally.

#### 8/2 Distribution during the rally

The fuel collection times will be given in Rally Guide 2.

### 9 RECONNAISSANCE

See also FIA-WRC Art. 25.

#### 9/1 Procedure for registration

All crews taking part in reconnaissance must complete the registration form (website) and return it to the Permanent Rally Office, following the procedure specified on the form.

All crews taking part in reconnaissance must register at Administrative Checks on Sunday, 2 April between 14:00 to 21:30 by appointment (\*) in order to obtain the necessary materials.

(\*) by arrangement for Manufacturers.

Each crew will be given 'Reconnaissance' stickers, as well as a specific reconnaissance control card. The stickers are to be affixed on the windscreen, rear side windows and rear window of the reconnaissance car.

The control card must be shown and endorsed by the marshals (identifiable by a tabard) at each stage start (in order to gain access to the special stage or shakedown) and at the Stop point. On completion of reconnaissance, this reconnaissance control card must be returned to the Rally Office no later than 21:00, Wednesday, 5 April.



## SUPPLEMENTARY REGULATIONS

### 9/2 Restrictions

**9/2/1** Reconnaissance will take place on Monday 3, Tuesday 4 and Wednesday 5 April in accordance with the schedule specified in Appendix II.

In the “Reconnaissance Road-Book” the route between the Special Stages is recommended but not compulsory.

**9/2/2** Each crew is limited to two passages on each special stage, including shakedown.

Special Stages run twice are considered to be one special stage as far as reconnaissance is concerned.

**9/2/3** The speed limit during the reconnaissance of special stages is 80 kph, except where road signs specify a lower speed limit.

The speed limit in built-up areas is 50 kph, except where road signs specify a lower speed limit.

Excessive speed during reconnaissance will incur a fine applied by the Clerk of the Course (FIA-WRC Art. 20.2).

**9/2/4** It must be remembered that reconnaissance takes place on roads that are open to normal traffic. Given that reconnaissance is not testing:

- local traffic regulations must be complied with in full at all times,
- the safety and rights of other road users must be respected at all times,
- reconnaissance cars must be covered by an insurance policy in accordance with the law. In no circumstances can the Organiser be held liable in the case of an accident.

**9/2/5** Under no circumstances may a crew drive in the special stages in the opposite direction of the rally, unless specific instructions to do so have been given by officials.

Competitors may enter a special stage only via the start and must exit via the finish.

### 9/3 Location of collection of speed control checking devices

All drivers must be equipped with a speed control device (GPS tracker system) in their cars during reconnaissance. (FIA-WRC Art. 25.4.4)

The provider is SIT Sports. Rental costs:

- |                              |      |
|------------------------------|------|
| • Manufacturers & WRC Trophy | €700 |
| • WRC2 & RGT                 | €280 |
| • WRC3 & JWRC                | €260 |
| • Other drivers              | €150 |

Payment by credit card at collection time.

#### Collection:

Sunday, 2 April (14:00 - 21:30), Administrative Checks – Rally Office - Bastia Airport.

#### Return:

Competitors having registered a Route Note Car must equip it with the speed control device given for reconnaissance.

Others competitors must return the speed control device Wednesday, 5 April (16:00 - 19:00), SIT Sports' truck - Bastia Airport.

## SUPPLEMENTARY REGULATIONS

### 9/4 Participation in reconnaissance only

As mentioned in FIA-WRC Art. 25.5, any driver wishing to take part in reconnaissance only will have to pay an entry fee of €1,000. He must complete the “recce only” registration form (website) and return it to the permanent Rally Office, following the procedure specified on the form and no later than Monday, 6 March (23:59).

## 10 ADMINISTRATIVE CHECKS

Competitors must complete administrative checks before presenting their car at scrutineering.

### 10/1 Documents to be presented

Following documents will be checked:

- valid drivers' and codrivers' driving licenses,
- drivers' and codrivers' passport or identification,
- valid competitor's license,
- valid drivers' and codrivers' international competition licenses,
- ASN authorization for all foreign competitors
- rally car's homologation form,
- rally car's technical passport,
- a letter of the rally car's owner authorising the driver to drive the vehicle during the event, when the driver is not the owner of the car,
- valid named additional driver driving license, if any (see SR Art. 12/16).

Correctness of all information given in the entry form.

Signatures of entry forms for competitor, driver and codriver.

### 10/2 Timetable

#### All competitors except Manufacturers

Sunday, 2 April

14:00 / 21:30 (\*) Rally Office – Bastia airport

(\*) following publication of the approved entry list, a timetable will be issued for each crew in a Bulletin.

#### Manufacturers

Tuesday, 4 Avril

14:00 / 20:00 (\*\*) Rally Office – Bastia airport

(\*\*) by arrangement with Rally Office.

## 11 SCRUTINEERING, SEALING AND MARKING

See also FIA-WRC Art. 26.

a) Cars may be presented at scrutineering by a representative of the team.

b) All cars must have their sump guards removed for sealing of gearboxes and differentials, and be kept with the car for the purpose of weighing.



## SUPPLEMENTARY REGULATIONS

- c) All competing cars (except Manufacturers' cars) must have a drilled hole of at least 2 mm diameter at a visible position on the engine block (when the bonnet is opened), for a sealing wire to pass through it.
- d) Crew must show the car's complete certified FIA homologation form.
- e) Manufacturers registered in the Championship may present a signed Certificate of Technical Conformity
- f) Scrutineers may require the car to be identified. The chassis and engine block may be marked.
- g) Non-priority drivers: the transmission (fitted and spares) will not be sealed; however the turbos (1 fitted and 1 spare) will be sealed; for limitation of spare turbochargers see the FIA-WRC (FIA WRC Sporting Regulations).  
The engine block will be sealed.
- h) On board camera (see FIA-WRC Art. 65.1):  
The mountings of any cameras and recorders must be able to withstand a deceleration of 25 g.
- i) On completion of scrutineering, if a car is found not to comply with the technical and/or safety regulations, the Stewards may set a deadline before which the car must be made to comply, or may refuse the start.

### **11/1 Scrutineering venue and timetable**

#### Pre-event scrutineering:

Location: SNVIC (Iveco) - Route de l'aéroport - 20290 Lucciana  
 GPS: N 42°32.925' - E 009°28.480' Tel.: +33 (0)495 333 094

Wednesday, 5 April

08:00 / 11:45 Sealing of parts for Manufacturers' cars  
 13:30 / 21:30 Scrutineering & sealing of parts for all other cars  
 For National Cars see Appendix VII.

Following publication of the approved entry list, a time schedule for the above activities will be issued for each car in a Bulletin.

#### Final scrutineering:

Location: SNVIC (Iveco) - Route de l'aéroport - 20290 Lucciana  
 GPS: N 42°32.925' - E 009°28.480' Tel.: +33 (0)495 333 094

Date: Sunday, 9 April - 17:00

### **11/2 Mud flaps**

The use of transverse mud flaps, in conformity with Art. 252.7.7 of Appendix J of the FIA Sporting Code, is permitted but not compulsory.

### **11/3 Drivers' safety equipment**

All items of clothing including helmets and head retaining device intended to be used must be produced at scrutineering. Compliance with Appendix L Chapter III will be checked. (See Appendix V of these Regulations).

### **11/4 Noise level**

The noise level on the road sections must not exceed 103 dB for an engine rotation speed of 3500 rpm for petrol engines and 2500 rpm for diesel engines.

## SUPPLEMENTARY REGULATIONS

### 11/5 Special requirements

Each competing car must be equipped with a reflective triangle and two fluorescent jackets. Two belt cutters must be carried on board at all times. They must be easily accessible to the driver and co-driver when seated with their harnesses fastened (Art. 253.6.1.3 Appendix J).

### 11/6 Installation of Safety Tracking System

Competitors must have installed the FIA Safety Tracking System in their rally cars before the car is brought to scrutineering. The system will be checked during scrutineering. Installation instructions will be provided in Rally Guide 2.

Systems may be collected either by the crew or a representative.

A €1,200 fully refundable credit card deposit will be collected by SIT from each competitor for the safety tracking boxes. This will be done with a swipe machine and at the end of the rally the slip will be destroyed when competitors return the equipment in good condition.

Safety Tracking Systems devices may be removed in the final Parc Fermé by a team member only with the agreement of the FIA Technical delegate and under the control of the marshalls (FIA-WRC Art. 42.6).

They must be returned to SIT Sports' truck - Bastia airport - no later than Sunday, 9 April 18:00.

## 12 OTHER PROCEDURES

### 12/1 Ceremonial start procedure

The ceremonial start will take place on Thursday, 6 April at Ajaccio Place Miot starting from 18:30. The ceremonial start will be given in reverse numerical order except for RGT, P3, P2 & P1 drivers for whom the order will be given in the reverse order of their respective Championships classification. Time cards will not be issued.

Crew members must wear their approved overalls at the ceremonial start.

Any crew arriving late at the Ceremonial Start Park will incur a cash penalty of €250.

Further information will be provided in Rally Guide 2.

After the ceremonial start, cars must be entered directly into the Parc Fermé (Place Miot). The competitive element of the rally will start on Friday, 7 April from TC0.

### 12/2 Start order

As per FIA-WRC Art. 45.

### 12/3 Permitted early check-in

Crews are authorised to check-in early at TC4E, 8E and 10A without incurring any penalty.

### 12/4 Time card change during the rally

Time cards will be issued at the following time controls :  
TC0 / TC2A / TC4C / TC4F / TC6A / TC8C / TC8F / TC9A

### 12/5 Special Stage start system

The Special Stage start system will be as FIA-WRC Art. 37.2, 37.3 & App. VII.



## SUPPLEMENTARY REGULATIONS

### **12/6 SS10 (Power Stage)**

With reference to FIA-WRC Art. 13.3, SS10 "Porto-Vecchio - Palombaggia" will be run as the Power Stage.

Crews will contest SS10 with a different start interval than the interval given at the start of Section 5 and/or in a different order than the order at TC9A and will be determined by the Organiser in conjunction with the Promoter.

The Power Stage will be timed to the elapsed millisecond. However, the results will show only tenths of a second.

For the purpose of Live TV there will be interviews after the Stop Point of the stage; the Organisers, in conjunction with the WRC Promoter, may stop any car and its crew on the road section so that they can take part in media interviews and the ceremony for television.

Until the passage of the last P1 driver, the crew with the current fastest time on SS10 must wait at the interview/podium zone until a faster time is recorded.

Any car held will be allocated a delay time which will be noted on the time card and added to the target time for the road section to TC10A.

### **12/7 Use of helmet prohibited on the road sections**

French traffic law prohibits the use of helmets during the road sections.

A tolerance of a few hundred meters before the TC preceding the start of a special stage and after the Stop Point is granted for the fitment and removal of helmets. These tolerance zones will be indicated on the road by « helmet zone » signs (entry and end) and will be indicated in the road book.

### **12/8 Official time**

Throughout the rally, the official time will be UTC + 2.

### **12/9 Service Park**

The emptying of waste water, the washing of cars and the driving of stakes into the ground are not permitted in the Service Park. All infringements will be reported to the Stewards who may apply penalties.

#### Dismantling:

For safety reasons, dismantling competitors' service structures in the service park is not permitted before 09:30 on Sunday, 9 April, after the public has cleared the service park.

Any team which breaks this rule will be fined €500.

In case of retirement during the rally, the team concerned must firstly obtain a dismantling authorization from the Service Park Coordinator.

### **12/10 Car wash**

An official car wash facility will be available at the Service Park entrance during the shakedown and before TC4C, 6A and 8C.

### **12/11 Porto-Vecchio Regroup**

All crews must be at organiser's disposal at this regroup, in order to be able to receive information about their starting time from TC9B, should this information deviate from that available at their time of arrival to TC9A.



## SUPPLEMENTARY REGULATIONS

### 12/12 On board cameras

As per FIA-WRC Art. 65.1.

### 12/13 Route Note Cars

Route note cars will be permitted as in FIA-WRC Art. 11.5.

All crews wishing to use a route note car must complete the registration form (website) and return it to the Permanent Rally Office, in accordance with the instructions on it.

SR Art. 9/2/3 applies also to route opening cars during the rally.

All Route Note Cars must be equipped with a speed control device (GPS tracker system).

The provider is SIT Sports.

Collection: the Route Note Cars will use the speed control device gave for reconnaissance.

Return: no later than 18:00, Sunday, 9 April at SIT Sports' truck – Bastia airport.

Route note cars are allowed to enter the stages up to 90' before the first rally car. However the set-up of any safety arrangements or warnings cannot be guaranteed to be in place before 120' prior to the first rally car.

It is strictly forbidden for route note cars to interfere in any way with safety arrangements or warnings. Any contravention will result in confiscation of Route Note car plates.

In case of retirement of a competitor, its Route Note Car is not allowed to pass through the remaining stages not contested by the crew and the GPS Tracker must be returned to SIT Sports' truck (Rally HQ) as soon as possible.

### 12/14 Re-start after retirement / Rally 2

FIA-WRC Art. 46 will apply.

The Time Card for the Section in which the crew retired must be submitted to the sweeper car or to a marshall at an official control.

### 12/15 Finish Procedure & final Parc Ferme

The rally ends at TC10A (early check-in allowed).

After check-in at TC10A each crew must remain in the holding area for a minimum of 15 minutes, and be available for media interviews.

All classified crews will pass over the podium (La Marina – Porto-Vecchio) starting from 13:30, in following order: finishers 10<sup>th</sup> to 1<sup>st</sup>, WRC Trophy winner, WRC2 winner, WRC3 winner, JWRC winner, RGT winner, all other competitors in arrival order.

Further information concerning the podium procedure will be provided in Rally Guide 2.

From the podium competitors are obliged to drive their competing car and must follow the route described in the road-book to the final Parc Fermé at Bastia airport. Between TC10A and the final Parc Fermé competitors will be under Parc Fermé conditions and will be observed by marshals, however refueling at the RZ10bis will be allowed, according to the usual procedure.

Recovery of any competing car which fails to arrive under its own power at the final Parc Fermé shall be the responsibility of the competitor; the permission of the Clerk of the Course must be obtained before any recovery arrangements are made.



## SUPPLEMENTARY REGULATIONS

There will be a Technical Zone at the final Parc Fermé entrance.

After this Technical Zone, WRC car teams are allowed to change of the wheels of their car (tyres list 2) according to the following procedure:

- the work may only be performed by the crew or by two team members,
- only equipment carried on board the competing car may be used,
- an extra car jack may be brought by the team members,
- only the action directly involved in the change of wheels is permitted.

A pass to authorize collection of the car when the final Parc Ferme is opened will be handed to all crews whose cars enter Parc Ferme.

Cars will only be authorised to leave final Parc Ferme once the Parc Ferme has been declared open, following publication of the final official classification and upon presentation of the pass handed to the crew on arrival at Parc Ferme.

One hour after the publication of the final official classification, the Parc Ferme will be opened to the public and the Organiser will no longer be responsible for the cars.

### **12/16 Named additional driver**

Due to the requirements of French traffic laws, each entered crew will have the opportunity to appoint a team member who will be officially named to drive the rally car according to the itineraries listed below which will be limited to the routes mentioned in the Road-Book:

a) before the rally start (TC0) or after Podium Ceremony:

- from service park to the technical scrutineering, and return,
- from service park to Ajaccio ceremonial start,
- from final Parc Fermé to the technical checks, and return.

b) in the case of Rally 2:

- from the location of the retirement to the service park.

All crews wishing to use a named additional driver must complete the registration form no later than Thursday, 23 March 2017. The registration form is annexed to the electronic entry form.

### **12/17 Shakedown**

For insurance reasons, only the driver and co-driver entered in the Che Guevara Energy Drink Tour de Corse are authorised to drive or co-drive during shakedown. Art. 29.4 of the FIA-WRC regulations will not apply during the Che Guevara Energy Drink Tour de Corse.

## **13 IDENTIFICATION OF OFFICIALS**

Post Chiefs	Blue tabard with white text
SS Managers	Red tabard with black text "Field Clerk of the Course"
Radio Point Marshals	Yellow tabard with blue radio sign and black text
Competitors' Safety Marshals	Yellow tabard with black text
Public's Safety Marshals	Orange tabard with black text
Official Info-Rally Reporters	Green tabard with black text
Scrutineers	Black tabard with white text
Competitor Relations Officers	Red tabard with black text
Doctors	White tabard with black text

## SUPPLEMENTARY REGULATIONS

### 14 PRIZES

The prize-giving ceremony will take place on Sunday, 9 April from 13:15, at the finish podium at La Marina at Porto-Vecchio.

#### List of awards:

##### **General classification**

1 <sup>st</sup> , 2 <sup>nd</sup> and 3 <sup>rd</sup> places	2 trophies (driver + co-driver)
1 <sup>st</sup> Manufacturer	1 trophy
4 <sup>th</sup> to 10 <sup>th</sup> places	2 trophies

##### **WRC 2**

1 <sup>st</sup> place	2 trophies
1 <sup>st</sup> Team	1 trophy

##### **WRC 3**

1 <sup>st</sup> place	2 trophies
1 <sup>st</sup> Team	1 trophy

##### **Junior WRC**

1 <sup>st</sup> , 2 <sup>nd</sup> and 3 <sup>rd</sup> places	2 trophies
--	------------

##### **WRC Trophy**

1 <sup>st</sup> place	2 trophies
-----------------------	------------

##### **RGT**

1 <sup>st</sup> place	2 trophies
-----------------------	------------

##### **Class**

1 <sup>st</sup> place	2 trophies
-----------------------	------------

##### **Other awards (for non-priority drivers)**

1 <sup>st</sup> , 2 <sup>nd</sup> and 3 <sup>rd</sup> places for National Private Competitor	2 trophies + GT2i Voucher
1 <sup>st</sup> , 2 <sup>nd</sup> and 3 <sup>rd</sup> places for Corsican National Private Competitor	2 trophies + GT2i Voucher

### 15 FINAL CHECKS AND PROTESTS

#### 15/1 Final scrutineering

Cars selected to attend final scrutineering will be escorted from Parc Fermé to the final scrutineering at SNVIC (Iveco) - Route de l'aéroport - 20290 Lucciana, on Sunday, 9 April at approximately 17:00.  
 GPS: N 42°32.925' / E 009°28.480' Tel.: +33 (0)495 333 094

#### 15/2 Protest fees

The protest fee is €1,000.

If a protest requires the dismantling and re-assembly of a clearly defined part of the car, the claimant must provide an additional deposit of €1,000.

#### 15/3 Appeal fees

The international appeal deposit is €6,000.



## SUPPLEMENTARY REGULATIONS

### APPENDIX I: ITINERARY

JEUDI 6 AVRIL 2017 / THURSDAY, 6 APRIL 2017						
TC	Location	SS dist.	Liaison dist.	Total dist.	Target time	First car due
CH	Emplacement	Dist. ES	Dist. Liaison	Dist. Totale	Temps imparti	Dép. 1ère voit.
	Service Park OUT - Bastia airport					
RZ	Refuel - Bastia airport (SP)					
	Distance to next refuel	5,40	24,64	30,04		
	Querciolo - Shakedown Start		10,71	10,71		
SD	<b>Shakedown Sorbo Ocagnano</b>	5,40				<b>08:00</b>
	Service Park IN - Bastia airport		13,93	19,33		
	Totals	(5,40)	(24,64)	(30,04)		

Sunrise : 06h55 / Sunset : 19h54 (Bastia)

29/01/2017

## SUPPLEMENTARY REGULATIONS

VENDREDI 7 AVRIL 2017 / FRIDAY, 7 APRIL 2017						
TC	Location	SS dist.	Liaison dist.	Total dist.	Target time	First car due
CH	Emplacement	Dist. ES	Dist. Liaison	Dist. Totale	Temps imparti	Dép. 1ère voit.
<b>RZ</b>	Thursday evening - Remote Refuel - Ajaccio airport					
0	Distance to next refuel (including 8 km from RZ0 to TC0)	31,20	70,84	102,04		
0	Parc Fermé <b>OUT</b> - Ajaccio parking Miot					08:15
0A	TFZ <b>IN</b> - Porticcio		15,53	15,53	00:35	08:50
	Tyre Fitting Zone 1 - Porticcio				00:10	
	Distance to next tyre change	60,32	90,47	150,79		
0B	TFZ <b>OUT</b>					09:00
1	Agosta		8,34	8,34	00:19	09:19
<b>SS 1</b>	<b>Pietrosella - Albitreccia 1</b>	<b>31,20</b>			<b>00:03</b>	<b>09:22</b>
<b>RZ</b>	Remote Refuel - Alata (38,97 km after SS 1)					
1	Distance to next refuel	29,12	29,20	58,32		
2	Plage du Liamone		59,79	90,99	01:49	11:11
<b>SS 2</b>	<b>Plage du Liamone - Sarrola-Carcopino 1</b>	<b>29,12</b>			<b>00:03</b>	<b>11:14</b>
<b>RZ</b>	Remote Refuel - D1 x T20 (8,38 km after SS 2)					
2	Distance to next refuel	31,20	61,27	92,47		
2A	Regroup & Technical Zone <b>IN</b> - Porticcio		22,09	51,21	01:10	12:24
2B	Regroup <b>OUT</b>				01:13	13:37
2C	TFZ <b>IN</b> - Porticcio		0,25	0,25	00:02	13:39
	Tyre Fitting Zone 2 - Porticcio				00:10	
	Distance to next tyre change	60,32	235,91	296,23		
2D	TFZ <b>OUT</b>					13:49
3	Agosta		8,34	8,34	00:19	14:08
<b>SS 3</b>	<b>Pietrosella - Albitreccia 2</b>	<b>31,20</b>			<b>00:03</b>	<b>14:11</b>
<b>RZ</b>	Remote Refuel - Alata (38,97 km after SS 3)					
3	Distance to next refuel	29,12	29,20	58,32		
4	Plage du Liamone		59,79	90,99	01:49	16:00
<b>SS 4</b>	<b>Plage du Liamone - Sarrola-Carcopino 2</b>	<b>29,12</b>			<b>00:03</b>	<b>16:03</b>
<b>RZ</b>	Remote Refuel - D1 x T20 (8,38 km after SS 4)					
4	Distance to next refuel		159,44	159,44		
4A	Neutralisation <b>IN</b> - Bastia Place St Nicolas		145,25	174,37	03:20	19:23
4B	Neutralisation <b>OUT</b> - Bastia Place St Nicolas				00:20	19:43
4C	Technical Zone <b>IN</b> - Bastia airport		22,53	22,53	00:40	20:23
4D	Technical Zone <b>OUT</b> - Flexi Service <b>IN</b>				00:10	(20:33)
	Flexi Service <b>A</b> - Bastia airport	(120,64)	(341,91)	(462,55)	00:45	
4E	Flexi Service <b>OUT</b> & Parc Fermé <b>IN</b> - Bastia airport (early check-in allowed)					(21:18)
	For all classified cars (except re-starting crews) TC 4E closes at					00:15
	Friday totals	(120,64)	(341,91)	(462,55)		

Section 1

Section 2

Sunrise : 06h57 / Sunset : 19h57 (Ajaccio)

29/01/2017



## SUPPLEMENTARY REGULATIONS

SAMEDI 8 AVRIL 2017 / SATURDAY, 8 APRIL 2017						
TC	Location	SS dist.	Liaison dist.	Total dist.	Target time	First car due
CH	Emplacement	Dist. ES	Dist. Liaison	Dist. Totale	Temps imparti	Dép. 1ère voit.
4F	Parc Fermé OUT & Service IN - Bastia airport					07:30
	<b>Service B - Bastia airport</b>				<b>00:15</b>	
4G	Service OUT					07:45
RZ	Refuel - Bastia airport (0,04 km after TC 4G)					
5	Distance to next refuel	48,71	43,54	92,25		
5	La Porta		31,62	31,62	00:52	08:37
<b>SS 5</b>	<b>La Porta - Valle di Rostino 1</b>	<b>48,71</b>			<b>00:03</b>	<b>08:40</b>
RZ	Remote Refuel - Ponte-Leccia (11,96 km after SS 5)					
6	Distance to next refuel	17,27	73,57	90,84		
6	Monetta		36,08	84,79	01:34	10:14
<b>SS 6</b>	<b>Novella 1</b>	<b>17,27</b>			<b>00:03</b>	<b>10:17</b>
6A	Regroup & Technical Zone IN - Bastia airport		49,41	66,68	01:20	11:37
6B	Regroup OUT - Service IN				01:26	13:03
	<b>Service C - Bastia airport</b>	<b>(65,98)</b>	<b>(117,11)</b>	<b>(183,09)</b>	<b>00:30</b>	
6C	Service OUT					13:33
RZ	Refuel - Bastia airport (0,04 km after TC 6C)					
7	Distance to next refuel	48,71	43,54	92,25		
7	La Porta		31,62	31,62	00:52	14:25
<b>SS 7</b>	<b>La Porta - Valle di Rostino 2</b>	<b>48,71</b>			<b>00:03</b>	<b>14:28</b>
RZ	Remote Refuel - Ponte-Leccia (11,96 km after SS 7)					
8	Distance to next refuel	17,27	114,29	131,56		
8	Monetta		36,08	84,79	01:34	16:02
<b>SS 8</b>	<b>Novella 2</b>	<b>17,27</b>			<b>00:06</b>	<b>16:08</b>
8A	Neutralisation IN - Bastia Place St Nicolas		67,60	84,87	01:40	17:48
8B	Neutralisation OUT - Bastia Place St Nicolas				00:20	18:08
8C	Technical Zone IN - Bastia airport		22,53	22,53	00:40	18:48
8D	Technical Zone OUT - Flexi Service IN				00:10	(18:58)
	<b>Flexi Service D - Bastia airport</b>	<b>(65,98)</b>	<b>(157,83)</b>	<b>(223,81)</b>	<b>00:45</b>	
8E	Flexi Service OUT & Parc Fermé IN - Bastia airport (early check-in allowed)					(19:43)
	<i>For all classified cars (except re-starting crews) TC 8E closes at</i>					22:35
	<b>Saturday totals</b>	<b>(131,96)</b>	<b>(274,94)</b>	<b>(406,90)</b>		

Sunrise : 06h52 / Sunset : 19h56 (Bastia)

29/01/2017

## SUPPLEMENTARY REGULATIONS

DIMANCHE 9 AVRIL 2017 / SUNDAY, 9 APRIL 2017						
TC	Location	SS dist.	Liaison dist.	Total dist.	Target time	First car due
CH	Emplacement	Dist. ES	Dist. Liaison	Dist. Totale	Temps imparti	Dép. 1ère voit.
8F	Parc Fermé OUT & Service IN - Bastia airport					07:15
<b>Service E - Bastia airport</b>					<b>00:15</b>	
8G	Service OUT					07:30
RZ	Refuel - Bastia airport (0,04 km after TC 8G)					
9	Distance to next refuel	53,78	78,61	132,39		
9	Antisanti		68,77	68,77	01:25	08:55
<b>SS 9</b>	<b>Antisanti - Poggio di Nazza</b>	<b>53,78</b>			<b>00:03</b>	<b>08:58</b>
RZ	Remote Refuel - Migliacciario (9,88 km after SS 9)					
10	Distance to next refuel	10,42	124,62	135,04		
9A	Regroup & Technical Zone IN - Porto-Vecchio La Marina		65,79	119,57	02:07	11:05
9B	Regroup OUT - TFZ IN				00:40	11:45
<b>TFZ 3 - Porto-Vecchio</b>					<b>00:10</b>	
Distance to next tyre change					10,42	141,15
9C	TFZ OUT					11:55
10	Precojo		8,96	8,96	00:20	12:15
<b>SS 10</b>	<b>Porto-Vecchio - Palombaggia (Power Stage)</b>	<b>10,42</b>			<b>00:03</b>	<b>12:18</b>
10A	Finish - Holding IN - Porto-Vecchio La Marina (early check-in allowed)		4,20	14,62	00:28	12:46
Podium Ceremony - Porto-Vecchio La Marina						(13:30)
<b>Sunday Totals</b>		<b>(64,20)</b>	<b>(147,72)</b>	<b>(211,92)</b>		
RZ	Remote Refuel - Migliacciario (55,55 km after Podium)					
10 bis	Distance to next refuel		72,44	72,44		
Parc Fermé IN - Bastia airport						
<b>All cars must be returned to Bastia airport Parc Fermé no later than</b>						<b>17:30</b>

Sunrise : 06h50 / Sunset : 19h57 (Bastia)

29/01/2017

TOTALS OF THE RALLY							
			SS	Liaison	Total	* %	SS % per day
Fri	Sections 1-2	4 SS	120,64	341,91	462,55	26,08%	38,08%
Sat	Sections 3-4	4 SS	131,96	274,94	406,90	32,43%	41,65%
Sun	Sections 5-6	2 SS	64,20	147,72	211,92	30,29%	20,27%
<b>Total</b>	<b>- 10 SS</b>		<b>316,80</b>	<b>764,57</b>	<b>1081,37</b>	<b>29,30%</b>	

\* % = the percentage of the total distance of special stages

\* % = pourcentage de la distance totale des épreuves spéciales



## SUPPLEMENTARY REGULATIONS

## APPENDIX II: RECONNAISSANCE SCHEDULE

**Monday, 3 April / Lundi 3 avril**

<b>Group A WRC / WRC 2</b>		
<b>Start/Départ</b>	<b>Stop point</b>	<b>Special stages</b>
07:45 - 09:00	07:45 - 09:10	Shakedown Sorbo Ocagano
08:20 - 12:05	09:00 - 13:15	SS 5/7 La Porta - Valle di Rostino
11:30 - 15:35	11:40 - 16:00	SS 6/8 Novella

<b>Group B WRC 3 / Others</b>		
<b>Start/Départ</b>	<b>Stop point</b>	<b>Special stages</b>
08:30 - 09:45	08:30 - 09:55	Shakedown Sorbo Ocagano
09:40 - 12:30	09:50 - 12:55	SS 6/8 Novella
11:55 - 17:10	12:35 - 18:20	SS 5/7 La Porta - Valle di Rostino

**Tuesday 4 April / Mardi 4 avril**

<b>Group A WRC / WRC 2</b>		
<b>Start/Départ</b>	<b>Stop point</b>	<b>Special stages</b>
07:30 - 11:00	08:15 - 12:15	SS 9 Antisanti - Poggio di Nazza
11:00 - 14:30	11:05 - 14:45	SS 10 Porto-Vecchio - Palombaggia (power stage)

<b>Group B WRC 3 / Others</b>		
<b>Start/Départ</b>	<b>Stop point</b>	<b>Special stages</b>
10:30 - 14:00	11:15 - 15:15	SS 9 Antisanti - Poggio di Nazza
14:10 - 17:30	14:15 - 17:45	SS 10 Porto-Vecchio - Palombaggia (power stage)

**Wednesday 5 April / Mercredi 5 avril**

<b>Group A WRC / WRC 2</b>		
<b>Start/Départ</b>	<b>Stop point</b>	<b>Special stages</b>
07:30 - 10:15	07:55 - 11:00	SS 1/3 Pietrosella - Albitreccia
10:05 - 14:10	10:25 - 14:55	SS 2/4 Plage du Liamone - Sarrola-Carcopino

<b>Group B WRC 3 / Others</b>		
<b>Start/Départ</b>	<b>Stop point</b>	<b>Special stages</b>
08:00 - 10:30	08:20 - 11:15	SS 2/4 Plage du Liamone - Sarrola-Carcopino
10:05 - 14:05	10:30 - 14:50	SS 1/3 Pietrosella - Albitreccia



## SUPPLEMENTARY REGULATIONS

### APPENDIX III: COMPETITOR RELATIONS OFFICERS



Daniel BALDASSARI



Tel: +33 (0)6 09 699 850



Vincent FATTACCIO



Tel: +33 (0)6 45 007 315



Jean-François LIÉNÉRE



Tel: +33 (0)7 84 009 185



Jean-Marie KREMPFF



Tel: +33 (0)6 09 594 404



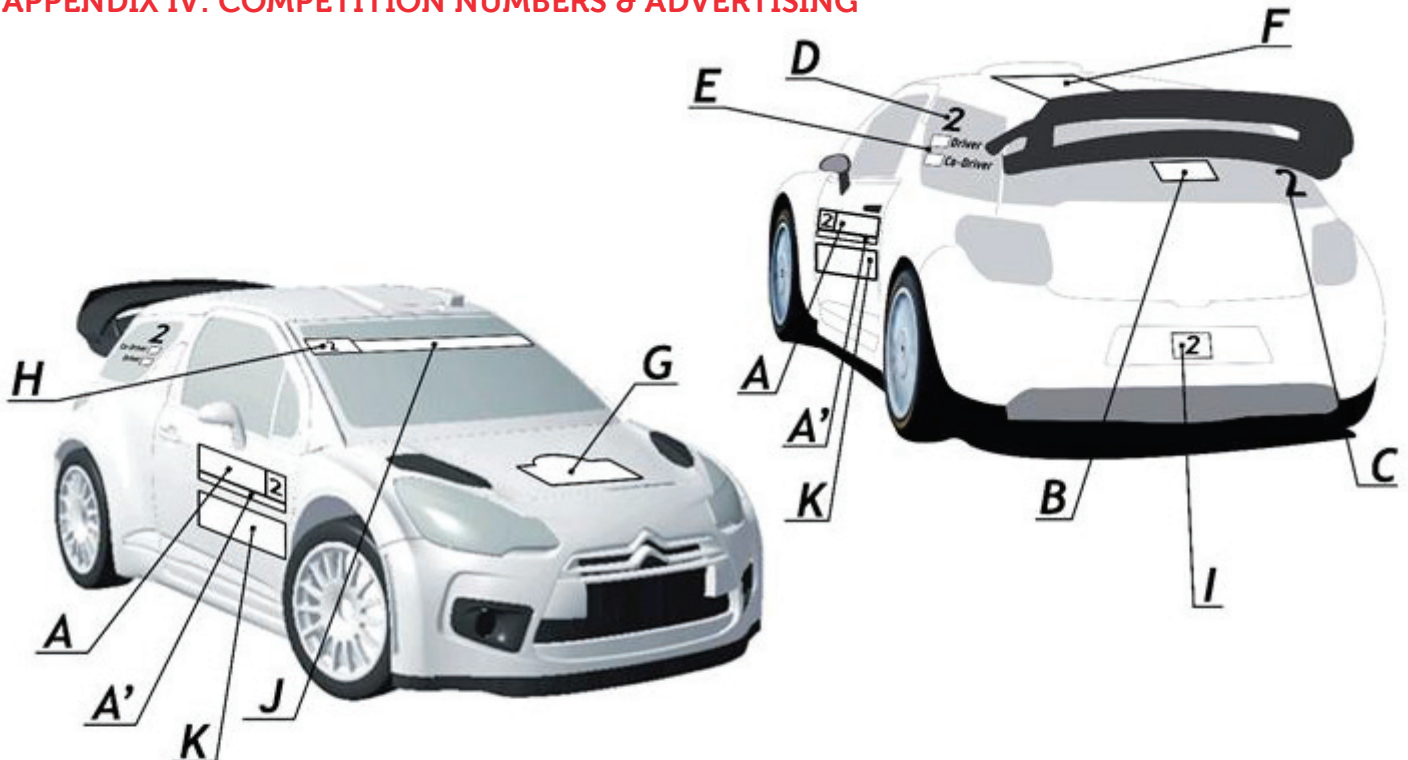
Jean WAMBACH



Tel: +33 (0)6 80 843 876

## SUPPLEMENTARY REGULATIONS

### APPENDIX IV: COMPETITION NUMBERS & ADVERTISING



#### **COMPETITION NUMBERS AND MANDATORY ADVERTISING (Igol):**

- A – TWO FRONT DOOR PANELS (67 cm x 17 cm)  
Each panel shall be placed horizontally at the leading edge of each front door, with the number at the front (on both side).  
The top of the plate shall be between 7 cm and 10 cm below the bottom window line. No signage, other than the colour scheme of the car or the championship identification A', shall be placed within 10 cm of this panel.
- A' – TWO FRONT DOORS PANELS (67 cm x 6 cm) (only for competitors eligible to score points in the Manufacturers, WRC 2, WRC 3 or Junior WRC Championships)  
Must be affixed immediately below the front door panel A.
- B – ONE REAR WINDOW PANEL (30 cm x 10 cm)  
Shall be positioned at the top (middle) of the rear window.
- C – ONE REAR WINDOW NUMBER (15 cm x 15 cm)  
Shall be positioned at the right of the rear window and must be visible from the rear at eye level.
- D – TWO SIDE WINDOWS NUMBERS (20 cm high)  
Shall be positioned on the rear side windows, adjacent to the crew's name.
- E – TWO DRIVER'S & CO-DRIVER'S NAMES (see FIA-WRC 19.1)  
These stickers are not provided by organizer.
- F – ONE ROOF PANEL (50 cm x 52 cm)  
Placed with the top towards the front of the car.
- G – ONE FRONT PLATE (43 cm x 21.5 cm)
- H – ONE WINDSCREEN NUMBER (21 cm x 14 cm) (in substitution of front vehicle registration plate)  
Shall be positioned 10 cm below the right top corner of the windscreen (mandatory).
- I – ONE REAR NUMBER (21 cm x 14 cm) (in substitution of rear vehicle registration plate)  
Shall be positioned at the emplacement of vehicle registration rear plate (mandatory).
- J – ONE WINDSCREEN STRIPE (15 cm high)  
Placed below the 15 cm high reservation for competitors at the top of the windscreen.

#### **OPTIONAL ADVERTISING (Che Guevara Energy Drink):**

- K – TWO FRONT DOOR PANELS (67 cm x 20 cm)  
Each panel shall be placed horizontally 10 cm below the panel A or A'.

## SUPPLEMENTARY REGULATIONS

### APPENDIX V: OVERALLS, HELMETS & OTHER SAFETY EQUIPMENTS

#### **FIA APPENDIX L**

All the entrants and crews are reminded of the obligation to know and to comply with the Appendix L to the FIA International Sporting Code, in particular regarding Chapter III - Drivers' Equipments (helmets, flame-resistant clothing, frontal head restraint (FHR) and safety belts).

See Chapter III on the document «Appendix L International Sporting Code».  
(link: <http://www.fia.com/regulation/category/123>).

These regulations apply to shakedown as well.

#### **HELMETS REMINDER:**

P1 drivers must wear crash helmets which meet the FIA Standard 8860-2004 or 8860-2010 – Advanced Helmet Test Specification (FIA Technical List n°33).

All others drivers must wear crash helmets homologated to one of the standards listed in FIA Technical List n°25, but are also compatible with FHR system, so are approved in accordance with FIA standard 8858 (Technical List n°41), 8860 (Technical List n°33) or 8859 (Technical List n°49). However, it is strongly recommended that they wear helmets meeting the FIA 8860 standard.

#### **FRONTAL HEAD RESTRAINT (FHR) REMINDER:**

The use of FIA approved FHR system is mandatory for all crews.

The wearing of any device intended to protect the head or neck and attached to the helmet is prohibited, unless the device has been homologated according to the FIA Technical List n°29.

#### **FLAME RESISTANT CLOTHING REMINDER:**

All crews must wear overalls, gloves (optional for co-drivers), long underwear, a balaclava, socks and shoes homologated to the FIA 8856-2000 standard (FIA Technical List n°27).



## SUPPLEMENTARY REGULATIONS

### APPENDIX VI: RGT CARS TYRES

#### SR Art. 7/6

The two following drawings are also eligible for the rally :

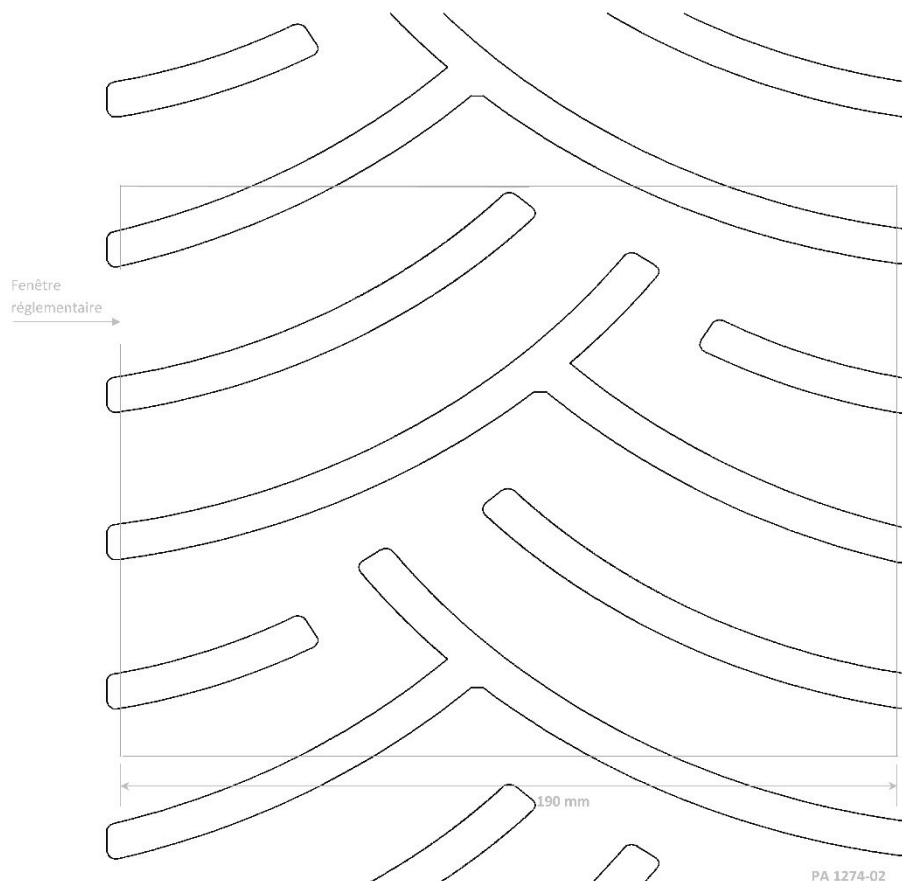


Domaine : Rallye Asphalte

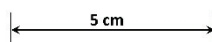
Dimension : 24 / 65 - 18

Entaillement surfacique sur une fenêtre de 190 mm de large : 24.8 %

Clermont-Ferrand le 29/06/2015



Echelle 1:1



PA 1274-02

MANUFACTURE FRANCAISE DES  
PNEUMATIQUES MICHELIN  
CLERMONT-FERRAND

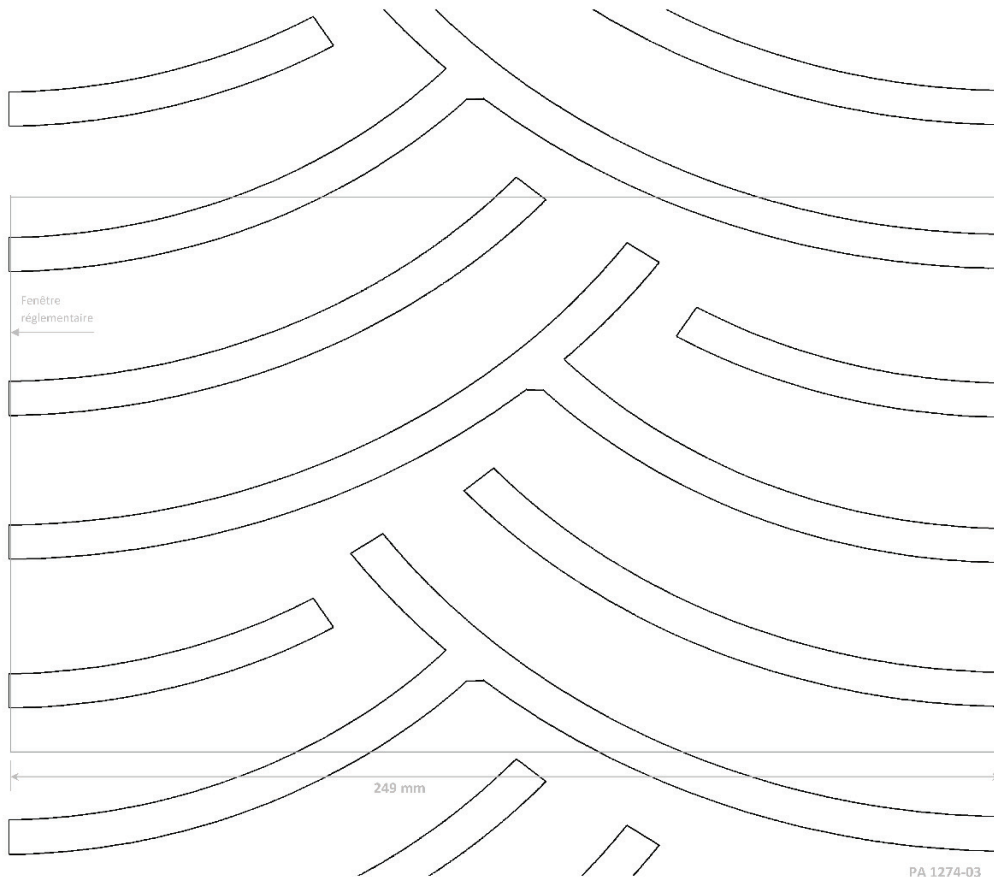
PROPRIETE EXCLUSIVE DE NOTRE  
SOCIETE REPRODUCTION OU  
UTILISATION INTERDITE SANS  
NOTRE ACCORD ECRIT

**SUPPLEMENTARY REGULATIONS**



Domaine : **Rallye Asphalté**  
 Dimension : **29 / 65 - 18**  
 Entaillement surfacique sur fenêtre de 249 mm de large : 24.9 %

Clermont-Ferrand le 29/06/2015



Echelle 1:1



MANUFACTURE FRANCAISE DES  
 PNEUMATIQUES MICHELIN  
 CLERMONT-FERRAND  
  
 PROPRIETE EXCLUSIVE DE NOTRE  
 SOCIETE REPRODUCTION OU  
 UTILISATION INTERDITE SANS  
 NOTRE ACCORD ECRIT



## SUPPLEMENTARY REGULATIONS

### APPENDIX VII: SPECIFIC ITEMS NATIONAL CARS

Preamble:

- The cars of the National category are the cars not eligible in the FIA classes and FIA groups mentioned in the SR Art. 4/3/2 (page 13) but conform with the technical regulations of the FFSA groups and classes specified in article 4/3/2 below.
- Only French crews (\*) licensed in France are eligible to enter a National Car in Che Guevara Energy Drink Tour de Corse 2017.

(\*) Competitor + driver + codriver

### SR - Art. 2/7 Senior Officials

#### FFSA officials in charge of the National Cars:

- Deputy Clerk of the Course Yves GUILLOU
- Technical Delegate: Christian BONIN

### RP – Art. 4/2 Entry Procedure

Competitors wishing to compete in the Che Guevara Energy Drink Tour de Corse with a National Car must tick the appropriate box on the electronic entry form.

### SR - Art. 4/3/2 Classes of cars

- Group A/FA: FA5, FA5K, FA6, FA6K, FA7, FA7K, A7S, A8/FA8, A8W/FA8W
- Group N/FN: FN1, FN2, N2 Serie, FN3, FN4
- Group GT+: GT15
- Group GT Series: GT9, GT10
- Group R: FR1, FR2, FR3, R4 compliant with FFSA Article 260 (French notes)
- Group F2000: F2/11, F2/12, F2/13, F2/14

#### Details of authorized groups and classes:

Groups / Classes		National cars
		<p>FA = Group A which obsolete FIA homologation is extended by the FFSA Group A compliant with FFSA Article 255 (French notes)</p> <p>FN = Group N which obsolete FIA homologation is extended by the FFSA Group N compliant with FFSA Article 254 (French notes)</p>
A	A 8W	WRC : 2.0 Turbo engine - WRC A and FA
	FA 8W	
	A 8	A and FA over 2000 cc
	FA 8	
	A 7S	S 2000 2.0 atmosphérique (if no FIA passport and no last Erratas)
	FA 7K	Kit Car over 1600 cc and up to 2000 cc (FA)
	FA 7	FA over 1600 cc and up to 2000 cc
	FA 6K	Kit Car, S1600 over 1400 cc and up to 1600 cc (FA)
	FA 6	FA over 1400 cc and up to 1600 cc
	FA 5K	Kit Car up to 1400 cc
FA 5	FA up to 1400 cc	

## SUPPLEMENTARY REGULATIONS

N	FN 4	FN over 2000 cc
	FN 3	FN over 1600 cc and up to 2000 cc
	FN 2	FN over 1400 cc and up to 1600 cc
	N2 Série	N2 conforme au règlement N2 Série FFSA
	FN 1	FN up to 1400 cc
GT	GT 15	GT +
	GT 10	GT over 2000 cc
	GT 9	GT up to 2000 cc
R	R 4	R4 which comply with Article 260 FFSA (French notes)
	FR 3	R3 which comply with Article 260 FFSA (French notes)
	FR 2	R2 which comply with Article 260 FFSA (French notes)
	FR 1	R1 which comply with Article 260 FFSA (French notes)
F 2000	F2 / 14	F2000 over 1600 cc and up to 2000 cc
	F2 / 13	F2000 over 1400 cc and up to 1600 cc
	F2 / 12	F2000 over 1150 cc and up to 1400 cc
	F2 / 11	F2000 up to 1150 cc

### SR - Art. 7/1 Tyres specified for use during the rally

#### A) 18 inch tyres

#### For all A8W-FA8W, A8-FA8 and A7S:

Tyres allowed in the French Championship and mentioned in the list of compulsory asphalt tyre treads eligible for FIA rallies (link: <http://www.fia.com/regulation/category/117>).

Only the compounds below are allowed:

Tyre Manufacturer	A8W / FA8W – A7S	Tyres	Compound
Michelin	List FIA	TBA	Hard
		TBA	Soft
		TBA	Wet
D'Mack	List FIA	TBA	Hard
		TBA	Soft
		TBA	Wet

- any combination of these different compounds is allowed.



## SUPPLEMENTARY REGULATIONS

### B) 15, 16, 17 and 18 (\*) inch tyres

#### (\*) for cars other than those listed above:

Tyres allowed in the French Championship and mentioned in the list of compulsory asphalt tyre treads eligible for FIA rallies (link: <http://www.fia.com/regulation/category/117>).

- any combination of different compounds is allowed.
- the use of hand cut tyres issue from the FIA list of eligible asphalt tyre treads is prohibited.
- the use of rain tyres is allowed. For the 15, 16 and 17" it is allowed to hand cut Intermediary Wet tyres into Maxi Wet (Manufacturer preconize drawing).

### C) 13 and 14 inch tyres:

The same tyres as for other CFR events, so moulded tyres for dry or rain.

It is allowed to hand cut Intermediary Wet tyres into Maxi Wet (Manufacturer preconize drawing).

### SR – Art. 7/2 Tyres quantities :

	<u>A8W-FA8W and A7S</u>	<u>All other National car</u>
Hard	28	N/A
Soft	22	N/A
Wet	8	N/A
<b>Maximum Allocated / No participation to Shakedown</b>	<b>28</b>	<b>26</b>
Extra if shakedown carried out	4	4
Maximum Allocated / Only in case of participation to Shakedown	32	30





**Partenaires Institutionnels / Institutional Partners**



COMMUNAUTÉ D'AGGLOMÉRATION DE BASTIA

COMMUNAUTÉ DE COMMUNES MARANA GOLO



**Partenaire Titre / Title Sponsor**



**Partenaire Officiel / Official Sponsor**



**Partenaires Media / Media Partners**



**Fournisseurs Officiels / Official Suppliers**



**Fournisseurs / Suppliers**



**Partenaires WRC / WRC Sponsors**

