



CLOSER TO RALLY.

SUPPLEMENTARY REGULATIONS

2019



14-17 FEBRUARY 2019

RALLYSWEDEN.COM

#RALLYSWEDEN



Index

1 INTRODUCTION	3
2 ORGANISATION	3
3 PROGRAMME	5
4 ENTRIES	8
5 INSURANCE	11
6 ADVERTISING AND IDENTIFICATION	12
7 TYRES	12
8 FUEL	14
9 RECONNAISSANCE	14
10 ADMINISTRATIVE CHECKS	16
11 SCRUTINEERING	16
12 OTHER PROCEDURES	18
13 IDENTIFICATION OF OFFICIALS	19
14 PRIZES	20
15 FINAL CHECKS AND PROTESTS	20

APPENDICES

APPENDIX 1 - ITINERARY THURSDAY SHAKEDOWN AND SECTION 1	21
APPENDIX 1 - ITINERARY FRIDAY SECTION 2-3	22
APPENDIX 1 - ITINERARY SATURDAY, SECTION 4- 6	23
APPENDIX 1 - ITINERARY SUNDAY, SECTION 7 - 9	24
APPENDIX 2 - RECONNAISSANCE SCHEDULE	25
APPENDIX 3 - COMPETITORS RELATIONS OFFICERS	26
APPENDIX 4 - COMPETITION NUMBERS AND ADVERTISING	27
APPENDIX 5 - OVERALLS, HELMETS AND OTHER SAFETY EQUIPMENT	28
APPENDIX 6 - FIA SAFETY EMERGENCY CONSOLE INSTRUCTIONS	29
APPENDIX 6 - STUDED TYRES - RECONNAISSANCE	34
APPENDIX 7 - STUDED TYRES - RALLY	34
APPENDIX 8 - SPECIFIC ITEMS FOR NATIONAL CARS	35
NOTES	

1 INTRODUCTION

This rally will be run in compliance with the FIA International Sporting Code and its appendices, the 2019 FIA World Rally Championship Sporting Regulations, the National Sporting Regulations which comply with the FIA regulations and these Supplementary Regulations. Modifications, amendments and/or changes to these Supplementary Regulations will be announced only by numbered and dated Bulletins (issued by the organizer or the Stewards).

Additional information will be published in Rally Guide 2, issued on 17 January. The 2019 FIA World Rally Championship Sporting Regulations can be found at www.fia.com

1.2 Road Surface

Snow, ice and/or frozen gravel.

1.3 Itinerary

SS distance: 316,80 km

Total distances: 1460,59 km

2 ORGANISATION

2.1 FIA titles for which the rally counts

FIA World Rally Championship for Drivers
FIA World Rally Championship for Co-Drivers
FIA World Rally Championship for Manufacturers
FIA WRC 2 Pro Championship for Drivers
FIA WRC 2 Pro Championship for Co-Drivers
FIA WRC 2 Pro Championship for Manufacturers
FIA WRC 2 Championship for Drivers
FIA WRC 2 Championship for Co-Drivers
FIA Junior WRC Championship for Drivers
FIA Junior WRC Championship for Co-drivers
FIA Junior WRC Nations Trophy

2.2 Visa numbers - FIA and ASN

Swedish ASN visa no:	RY-134	issued on: 2018-11-08
Norwegian ASN visa no:	ARRA 19.03342	issued on: 2018-11-09
FIA visa no:	2WRC/141218	issued on: 2018-12-14

2.3 Organisers name and contact details

Rally Sweden AB

Address:	Lantvärnsgatan 4 SE-652 21 Karlstad
Telephone:	+46 (0)54 10 20 25
E-mail:	mailbox@rallysweden.com entry@rallysweden.com (entry related matters)
Web site:	www.rallysweden.com

2.4 Organisation committee

Göran Andersson, Håkan Andersson, Vera Bakke Andresen, Kicki Axelsson, Bruno Berglund, Krister Berglund, Jonas Bjällfalk, Stefan Claesson, Hasse Joansson, Stig Rune Kjernsli, Adam Magnusson, Johan Magnusson, Glenn Olsson, Malin Thorsén, Jennie Skogman, Magnus Östlund, Christina Lundqvist Viklund

2.5 Stewards of the meeting

Chairperson (appointed by the FIA): Mrs. Waltraud Wünsch
 FIA Steward: TBA
 ASN Steward: Mr. Bo Swaner
 Secretary to the Stewards: Ms Yvonne Gilli

2.6 FIA Delegates

FIA Sporting Delegate: TBA
 FIA Safety Delegate: Ms Michèle Mouton
 FIA Media Delegate: TBA
 FIA Technical Delegate: Mr Jérôme Toquet
 FIA Assistant Technical Delegate: Mr Karmo Uusmaa
 FIA Assistant Technical Delegate: Mr Emanuele Saglia
 FIA Assistant Technical Delegate: Mr Carlos Baros
 FIA Assistant Technical Delegate: Mr Clement Clerc
 FIA Medical Delegate: TBA

2.7 Senior Officials

General Manager: Glenn Olsson
 Sporting Director: Christina Lundqvist Viklund
 Clerk of the Course: Stig Rune Kjernsli
 Deputy CoC/ Route Manager: Johan Magnusson
 Assistant CoC/ Technology Manager: Göran Andersson
 Assistant CoC/ Service Park Manager: Adam Magnusson
 Chief Safety Officer: Magnus Östlund
 FIA and Competitors Coordinator /
 Secretary of the rally: Vera Bakke Andresen
 Chief Medical Officer: Maria Lannerås
 Assistant Chief Medical Officer: Thorsten Egonsson
 Assistant Safety Officer: Hasse Joansson
 Assistant Safety Officer: Bruno Berglund
 Assistant Route Officer: Krister Berglund
 Chief Scrutineer: Håkan Andersson
 Assitant Chief Scrutineer: Anna Rönnle
 Results Officer: Kicki Axelsson
 National Press Officer: Jonas Bjällfalk
 Helicopter Coordinator: Lars-Gunnar Gustafsson
 Sustainability Manager: Malin Thorsén



CLOSER TO RALLY.

2.8 HQ location

Hotel Selma Spa,
Sundbergsvägen 3,

SE-686 28 Sunne, Sweden

GPS Coordinates: N59° 49,688, E13° 7,736

Rally Office Phone:

+46 (0) 54 10 20 25

E-mail:

mailbox@rallysweden.com

entry@rallysweden.com (for entry related matters)

2.9 Official Notice Board-Location

The official notice board will be placed at Rally HQ, Hotel Selma Spa. In addition, all official documents will be published on the "On-line Notice Board" on rallysweden.com and will be available to all users.

3 PROGRAMME

Rally HQ opening hours

Monday	11 February	09:00 - 20:00
Tuesday	12 February	08:00 - 20:00
Wednesday	13 February	07:00 - 20:00
Thursday	14 February	07:00 - 22:00
Friday	15 February	06:30 - 22:00
Saturday	16 February	06:30 - 22:30
Sunday	17 February	06:00 - 20:00

3.1 Schedule before the rally week

Friday 14 December 2018	
Supplementary Regulations published Opening date for entries	Website
Tuesday 15 January 2019	
Closing date for entries	Website
Wednesday 16 January 2019	
Closing date for National media accreditation	Rally Office
Thursday 17 January 2019	
Road Book, Rally Guide 2 and route map available	Web & Rally Office
Friday 18 January 2019	
Publication of entry list with allocated competition numbers (subject to FIA approval)	Website

Tuesday 22 January 2019	
Original entry form must reach the organiser Closing date TV and international radio accreditation	Rally Office WRC Promotor
Wednesday 23 January 2019	
Closing date for International media accreditation	FIA
Wednesday 30 January 2019	
Closing date for FIA fuel orders Closing date for order of Service Park facilities Closing date for order of Extra material Media Safety Book published Closing date for reconnaissance application for non-entrants	mehmet.basar@total.com Rally Office Rally Office Website Rally Office
Friday 1 February 2019	
Closing date for helicopter and drone registration	Rally Office

3.2 Schedule during the rally week

Thursday 7 February 2019		
12:00 - 17:00	Service Park opens for Manufacturers	SP, Torsby
Friday 8 February 2019		
09:00 - 17:00	Service Park opens for Manufacturers	SP, Torsby
Saturday 9 February 2019		
09:00 - 17:00	Service Park opens for Manufacturers	SP, Torsby
Sunday 10 February 2019		
09:00 - 17:00	Service Park opens for Manufacturers and WRC2 entrants	SP, Torsby
Monday 11 February 2019		
08:00-17:00	Service Park opens for Manufacturers and WRC2 entrants Rally Office opens	SP, Torsby
09:00	Registration for reconnaissance	Rally HQ
16:00 - 20:00	Administrative checks and collection of materials	Rally HQ
16:00 - 20:00	Collection of GPS Tracker for reconnaissance	Rally HQ
16:00 - 20:00		SAS Truck, SP

Tuesday 12 February 2019		
08:00-17:00	Service Park open for all entrants	SP, Torsby
08:00 - 14:00	Reconnaissance of special stages (incl. Shakedown) Media accreditation opens	Recce schedule Press Centre, SP, Torsby
14:00-20:00	Collection of FIA Safety tracking devices	SAS Truck, SP
Wednesday 13 February 2019		
08:00 - 08:00	Reconnaissance of special stages	Recce schedule
09:00 - 12:30	Press centre opens	SP, Torsby
15:00 - 22:00	Scrutineering incl. sealing and marking. Manufacturers	SP, Torsby
	Scrutineering incl. sealing and marking. Other entrants	Stjerneskolan, Torsby
15:00 - 18:00	Return of reconnaissance GPS trackers	SAS Truck, SP
16:00	Team Managers Meeting for Manufacturers (P1 and P2P)	Rally HQ
18:00-18:30	Mandatory Drivers Briefing	Rally HQ
Thursday 14 February 2019		
09:00- 10:30	Shakedown P1	Skalla, Torsby
10:30 - 12:00	Shakedown P1 + P2P + P2	Skalla, Torsby
12:00 - 13:30	Shakedown P3 and Non-Priority drivers	Skalla, Torsby
12:00	"Meet the Crews"	SP, Torsby
13:00	FIA Pre-Event Press Conference	Press Centre, SP Torsby
15:00	Publication of start list Section 1 + section 2	Rally HQ
16:00-18:00	Reconnaissance SS 1/15	SSS, Karlstad
19:00	Opening Ceremony incl. presentation of the drivers	SSS, Karlstad
20:04	Rally Start	SSS, Karlstad
Friday 15 February 2019		
20:00	Publication of start list Section 4	Rally HQ
Saturday 16 February 2019		
20:00	Publication of start list Section 7	Rally HQ
Sunday 17 February 2019		
From 13:00	Podium Ceremony and Prize Giving	SP, Torsby
14:00	Final Scrutineering	Stjerneskolan, Torsby
14:00	FIA Post-Event Press Conference	Press Centre, SP Torsby
17:00	Publication of Provisional Final Classification	Rally HQ

4 ENTRIES

4.1 Closing date for entries

The closing date for entries is Tuesday 15 January at 15:00 (CET).

4.2 Entry Procedure

Those wishing to take part in Rally Sweden 2019 must register and fill in the electronic entry form published at <https://registrations.fia.com/wrcswe> duly completed before the closing date for entries. The entry will only be accepted if accompanied by the total amount of the Entry Fee. To be accepted, competitors must send a proof of payment of the entry fee by e-mail to the secretary of the event (vera@rallysweden.com) by the closing date of entries. Foreign drivers must submit an approval from their ASN in the same e-mail.

Manufacturers, WRC 2 Pro and WRC 2 entrants who wish to score points, must make their entries by using the electronic standard rally entry form for their championships available in the FIA application at <https://registrations.fia.com>.

Entry fees and entry procedures for National Cars, NAT 2 and NAT 4, see Appendix 8

4.3 Classes

With reference to Art 4 in 2019 FIA WRC Sporting Regulation, the classes will be divided according to table below.

Cars entered in a class with less than 5 entrants will be elevated to the next class.

CLOSER TO RALLY.

Classes	Groups	
RC1	World Rally Cars: 1.6 T engine	<p>- World Rally Cars, complying with the 2019 Appendix J, Art. 255A, when driven by a driver who has obtained the approval of the FIA</p> <p>- World Rally Cars homologated before 31.12.2013, complying with homologation extension 100/01 KSR and its WR extension, and with the 2013 Appendix J, Art. 255A. Only WRC cars with an FIA passport issued before 31/12/2016 are allowed</p> <p>- World Rally Cars homologated as from 01.01.2014, complying with homologation extension 200/01 WRC and with the 2016 Appendix J, Art. 255A. Only WRC cars with an FIA passport issued before 31/12/2016 are allowed.</p> <p>- World Rally Cars homologated as from 01.01.2015, complying with homologation extension 300/01 WRC and with the 2016 Appendix J, Art. 255A. Only WRC cars with an FIA passport issued before 31/12/2016 are allowed.</p>
RC2	Group R5 (VR5)	- Group R5 cars conforming to the 2019 Appendix J, Art. 261.
RGT	RGT cars	- Group RGT cars conforming to the 2019 Appendix J, Art. 256.
RC3	R3(atmo / over 1600cc and up to 2000cc - VR3C and turbo over 1067cc and up to 1333cc - VR3C)	- Group R conforming to the 2019 Appendix J, Art. 260
	R3 (turbo / up to 1620cc / nominal - VR3T)	- Group R cars conforming to the 2019 Appendix J, Art. 260D.

RC4	RC4A	R2 (atmo over 1600cc and up to 2000cc - VR2C and turbo over 1067cc and up to 1333cc - VR2C)	- Group R conforming to the 2019 Appendix J, Art. 260
	RC4B	R2 (atmo over 1390cc and up to 1600cc - VR2B and turbo over 927cc and up to 1067cc - VR2B)	- Group R conforming to the 2019 Appendix J, Art. 260 - Group R conforming to the 2018 Appendix J, Art. 260 (VR2B homologated before 31/12/2018)
RC5		R1 (atmo up to 1600cc - VR1 and turbo up to 1333cc - VR1)	- Group R conforming to the 2019 Appendix J, Art. 260
		R1 (atmo up to 1600cc - VR1A/VR1B and turbo up to 1067cc - VR1A/VR1B)	- Group R conforming to the 2018 Appendix J, Art. 260 (VR1A and VR1B homologated before 31/12/2018)

For groups and classes for National Cars, see SR, Appendix 8.

4.4 Entry fees and entry packages

4.4.1 Entry fees

Manufacturers, WRC 2 Pro and WRC 2:

As per FIA WRC 2019, Appendix VI, with local VAT added (6%), see also Art. 4.5.

Legal entrant:	Car entered by a team (not entered in any of the categories above), a company or other legal entity (with entrants licence)
Entry fee:	SEK 50 000 + 6 % VAT (Total amount: SEK 53 000,-)
Private entrant:	The competing car is entered by the driver or the co-driver.
Entry fee:	SEK 30 000 + 6 % VAT (Total amount: SEK 31 800,-)

Private entrant
from Scandinavia
(S, N, DK, SF):

Non-priority drivers with the competing car entered by the driver or the co-driver.

Entry fee:

SEK 15 000 + 6 % VAT (Total amount: SEK 15 900,-)

Entry fees for National Cars, NAT 2 and NAT 4, see Appendix 8

4.4.2 Entry Packages

The entry packages for FIA Championship entrants will be as stipulated by the FIA in the 2019 FIA WRC Sporting Regulations.

Entry packages for legal and private entrants:

	Legal Entrants	Private Entrants
Service Park area approx.	10 x 10 m	10 x 10 m
Car plates		
Service plate	2	2
Auxiliary plate	1	0
Passes		
Team passes	10	6
Documents		
Supplementary Regulations	available only at www.rallysweden.com	
Road Book sets	3	2
Route Maps	5	3
Official Magazine / Programme	5	2
Rally Guide 1	available only at www.rallysweden.com	
Rally Guide 2	available only at www.rallysweden.com	
Results	All results available only at www.rallysweden.com	

4.5 Payment details

The entry fee must be paid to the following bank account:

Payment in Sweden:

Bankgiro 5070-5169

Payment from abroad:

IBAN: SE85 80000 8156 29 03 0406 772

SWIFT: SWEDSESS

Account holder: Rally Sweden AB

Address to the bank: SWEDBANK, SE-105 34 Stockholm, Sweden

Note! Please mark the payment with the drivers last name.

4.6 Refunds

Entry fees will be refunded in full:

a) to candidates whose entry has not been accepted

b) in case of the rally not taking place

The organisers may refund part of the entry fee to those competitors who, for reason of “force majeure” (duly certified by their ASN), are unable to start in the rally. This must be applied for in writing giving the reason for claim including bank and account details.

5 INSURANCE

Eligible for the rally including Shakedown

5.1 Traffic Insurance

All cars participating in the rally must have a valid obligatory traffic insurance towards third parties. In Sweden and Norway, the “Green Card” (International Motor Insurance Card) system is applied. For cars coming from countries outside the Green Card system and EEA-countries, a Nordic frontier insurance must be taken at the border. Traffic insurance guarantees competitor’s cover for civil responsibility towards third parties on road sections. The organizer will issue third party insurance cover for foreign registered cars valid on special stages (incl. shakedown).

5.2 Accident insurance in Norway

The Norwegian Traffic Damage Act is enforced.

5.2.1 Accident Insurance on special stages

The organizer will issue third part insurance cover valid on special stages for all cars. Competitors’ and organizers’ property are excluded.

5.3 Insurance amounts

Sweden

Maximum compensation in case of damage is SEK 300 000 000.

Maximum compensation regarding organizer liability insurance is SEK 5 000 000.

Norway

Maximum compensation in case of third part damage is unlimited (personal damage). Maximum compensation regarding organizer liability insurance is NOK 10 000 000 per each damage (property damage).

5.4 Limitation of Indemnity

The organizer declines any liability concerning the consequences caused by any fraudulent action taken by the competitor, may this be against the rules and regulations of the rally or against the laws of the country.

Any service vehicles or reconnaissance cars, even those bearing the official identification of the organizer, may under no circumstances be considered as official participants of the rally, hence their insurance policies remain the sole responsibility of the owner.

6 ADVERTISING AND IDENTIFICATION**6.1 Restrictions**

Advertising for tobacco, tobacco products and smokers' requisites is forbidden in Sweden and Norway. Advertising for alcohol is restricted by law and is not allowed on competing cars, service cars, equipment an/or clothing.

6.2 The organisers advertising

The organisers' advertising on the door, roof and rear window plates will be announced in a bulletin. There will be no organisers' optional advertising.

6.3 Identification

Competition numbers and rally plates according to the 2019 FIA WRC Sporting Regulation, art. 18, will be issued by the organiser. See also Appendix 4.

Numbers and plates must be affixed on the rally car before the car is brought to scrutineering and must be visible through the duration of the rally.

The following stickers will be affixed to the car by the scrutineers:

- At scrutineering:
 - A check card, size 10 cm wide x 6 cm high (at roll-cage co-drivers side)
- At the overnight parc fermé for section 2, section 4 and section 7:
 - A "2 minutes" - sticker (on the roof left upper corner over the wind screen) on cars with a start interval of 2 minutes.

7 TYRES**7.1 Tyres quantities**

In addition to complying with Articles 60, 61 and 62 of the 2019 FIA WRC Sporting Regulations, the following maximum quantities of tyre are confirmed for use:

FIA Nominated Tyre Manufacturer	Tyre	Compound
TBA (Bulletin)	TBA (Bulletin)	Ice

Type of cars	Quantity for the event	Extra tyres when shakedown is taken	Maximum total
World Rally Cars	24	4	28
All other cars	22	4	26

Tyres used during Shakedown will not count in the overall quantity for the event.

7.2 STUDED TYRES FOR RECONNAISSANCE

Studded tyres may be used during reconnaissance. They must be in conformity with the following regulations (see also Appendix 6):

- The studs shall be solid, cylindrical and flatcut
- The length of the stud is limited to 15 millimeters
- The weight of the stud is limited to 2,5 grams
- The maximum overhang is limited to 2,0 millimetres
- The studs must be mounted in to the tyre from the outside
- The number of studs must not exceed 250 per tyre
- The body of the stud must be solid

Any infringement to this rule will be reported to the Stewards, who will consider a penalty according to the International Sporting Code Art. 12.

7.3 Studded tyres during the event

Studded tyres may be used during the event. They must be in conformity with the following regulations (see also Appendix 7)

- The studs shall be solid, cylindrical and flatcut
- The cross section of the studs must form a full circle at every point
- The stud is not allowed to be tubular at any point
- The body of the stud must be homogenous and is not allowed, under any circumstances to form a tube or hole.
- Maximum diameter of the flange is 9 millimetres
- Minimum diameter of the metal core in the middle of the stud is 2,5 millimeters. It must be cylindrical, homogenous and flatcut
- The length of the stud is limited to 20 millimeters
- The weight of the stud is limited to 4 grams
- The studs must be mounted in to the tyre from the outside
- The number of studs must not exceed 20 per any decimeter of the wheel circumference.

Any infringement to this rule will be reported to the Stewards, who will consider a penalty according to the International Sporting Code Art. 12.

7.3.1 Method for checking the number of studs

Measurement will be carried out with a pattern, on a non-pressured part of the tyre. The length of the pattern is 30 cm, and within the pattern there must not be more than 60 studs. If the number of studs is more than 60 in a 30 cm sections, a further check will be carried out in the next 30 cm section and the total number of studs in both sections must be maximum 120.

8 FUEL

All drivers must use FIA fuel as provided by the FIA appointed supplier. See art 58 and 59 of the 2019 FIA WRC Sporting Regulations. For environmental and safety reasons, all competitors must refuel in the designated refuel zones (except as detailed in the regulations for the change of fuel tank).

8.1 Ordering procedure

Competitors must notify their fuel requirements to the sole supplier at the following address (order form available on www.rallysweden.com):

Email: mehmet.basar@total.com

The cost of the fuel is € 5,60 + VAT per litre.

8.2 Closing date for ordering FIA Fuel

Closing date for ordering of FIA-fuel is Tuesday 29 January.

8.3 FIA couplings

Fuel couplings

All competitors are required to fit FIA specified refuel couplings.

Fuel-sample couplings

Cars of priority drivers must be fitted with FIA fuel-sample couplings.

9 RECONNAISSANCE

See also Art. 25 in the 2019 FIA WRC Sporting Regulations

9.1 Procedure for reconnaissance registration

Date and Time: Monday 11 February 16:00 - 20:00

Location: Rally HQ, Sunne

GPS Coordinates: N59° 49,688, E13° 7,736

Administrative checks will be carried out at the same time as registration for recce. Both crew members must therefore be present.

All priority drivers may send a representative (duly assigned by writing) presenting all documents as listed in Art. 10.1.

Administrative check for Manufacturers may be carried out by appointment.

At the registration a special ID-form, including details of the car that will be used during the reconnaissance, must be signed.

Identification numbers, given at the registration shall be affixed on the car (windscreen at the top corner, drivers side) and kept visible for the duration of the reconnaissance period.

Participation in reconnaissance only

Any driver holding an appropriate international license but not entered in the rally may apply to take part in the reconnaissance. The regulations on reconnaissance must be respected in their entirety. A registration form for this purpose will be sent on request. The final permission for taking part in recce is left to the discretion of the organiser. An administrative fee of € 1200 (+ 6 % VAT) will be charged.

9.2 Installation of speed control checking devices

With reference to Article 25.4.4 of the 2019 FIA WRC Sporting regulations, **all cars** must carry recce GPS trackers for speed control during reconnaissance.

Collection of Recce GPS trackers:

Date and Time: Monday 11 February 16:00 - 20:00

Location: SAS Truck, Torsby Service Park

GPS Coordinates: N60 09,138, E12 59,750

Rental costs:

P1/P2P/P2 300 € H.T

Non-priority 130 € H.T

9.3 Specific and national restrictions

9.3.1 Passages

Crews are authorised to drive a maximum of 2 times through each special stage in accordance to the schedules given in Appendix 2. The passages must be driven in the same direction as the rally, at a reduced speed and fully respecting the Traffic Laws.

All special stages are run twice during the rally but may only be driven as one stage during recce. All passages through the special stages will be recorded by the marshals and signed by the competitors. Time cards will not be used.

9.3.2 Speed limits

Maximum speed allowed during reconnaissance is 70 km/h on special stages, unless another speed limit is indicated by traffic signs or by written instructions in the Road Book (or in bulletins). All crews are reminded of Art. 20.2 in the 2019 FIA WRC Sporting Regulations. For recce of SSS 1/15 see. Art. 9.3.4 below

9.3.3 Tyres

For reconnaissance tyre regulations see Art. 7.2

9.3.4 Reconnaissance SSS 1 and SSS 15 (Karlstad Super Special Stage)

Recce on SSS 1 and SSS 15 will be carried out Thursday 15 February and may only be driven as one stage during recce. Since this is a Super special stage, cars will run the loop twice from starting position 1 (outer track). There will not be a separate run for starting position 2 (inner track).

The recce must be done with the rally car with rally studded tyres. Further instructions will be published in Rally Guide 2.

The recce of SSS will be carried out without tracker system.

The speed limit on this stage during recce is 30 km/h. The speed limit at the trotting course is 20 km/h before the start line and after the finish line.

All crews are reminded of Art. 20.2 in the 2019 FIA WRC Sporting Regulations.

10 ADMINISTRATIVE CHECKS

10.1 Documents to be presented

The following will be checked at the administrative check:

- Valid Entrant license
- Valid Drivers and co-drivers competition licenses
- Valid Drivers and co-drivers driving licenses
- Valid Drivers and co-drivers passports or identification
- ASN authorization for all foreign competitors
- Completion of all details on the entry form
- Insurance cover (third parties) for the rally car
- Insurance cover for repatriation (non-Swedish crews)
- Documents and registration papers for the rally car

10.2 Timetable

Date and Time: Monday 11 February 16:00 - 20:00

Location: Rally HQ, Sunne

GPS Coordinates: N59° 49,688, E13° 7,736

NB! Manufacturers may make their administrative check by appointment.

11 SCRUTINEERING

11.1 Venue and Timetable

Manufacturers:

Location: Service Park, Torsby. GPS Coordinates: N60 09,138, E12 59,750

Date: Wednesday 13 February

Time: 09:00 -12.30 (individual times to be confirmed in a bulletin)

Other entrants:

Location: Stjerneskolan, Torsby

GPS Coordinates: N60° 8.550 ' E13° 0.525 '

Date: Wednesday 13 February

Time: 14:00 - 22.00 (individual times to be confirmed in a bulletin)

Note! Rally studded tyres are forbidden in the workshop at Stjerneskolan.

3 mechanics can follow the car to scrutineering (2 for the car and 1 for personal equipment).

In addition, 2 mechanics may follow the Servicecar with spareparts.

11.2 Mudflaps

Fitting of transversal mud flaps (all wheels) is mandatory in conformity with Appendix J, Art. 252.7.7.

11.3 Windows

The use of silvered or tinted films is not authorized in this rally.

11.4 Drivers safety equipment

Drivers safety equipment will be checked at scrutining. For specifications, see App. 5

11.5 Noise level

The maximum noise level permitted is 103 dBA. Cars not complying with this rule will not be allowed to start. The noise will be measured with a sonometer regulated at "A" and "SLOW", placed at an angle of 45 degrees to and a distance of 50 cm from the exhaust outlet, with the cars engine running at 3 500 rpm.

11.6 National and specific regulations

Competing cars must be equipped with two snow shovels, two first aid kits and one reflective triangle. In addition, in Norway one yellow jacket to use if the car stops on roadsection is mandatory.

11.7 FIA Safety tracking device

In accordance with Art. 40.2.1 of the 2019 FIA WRC Sporting Regulations, all competitors must make provisions in their rally cars for the installation of the FIA Safety Emergency Console System and the emergency button., and the system must be installed before the car is brought to scrutineering.

For Installation instructions see Appendix 6

Systems may be collected either by the crew or a representative.

A €1200 fully refundable credit card deposit will be collected by STATUS AWARENESS SYSTEM (SAS) from each competitor for the FIA Safety Emergency Console boxes. This will be done with a swipe machine and at the end of the rally the slip will be destroyed when competitors return the equipment in good condition. Deposit must be done by credit card, no other deposit accepted.

The FIA Safety Emergency Console System devices must be removed in the Final Parc Fermé.

They must be returned no later than 18.00 hrs on Sunday 17th February to STATUS AWARENESS SYSTEM (SAS) at the Service Park.

11.8 Preparations

The homologation form of the rally car and certificates on roll cage and fuel tank must be brought to scrutineering. The bodyshell and engine will be marked with at special device and the competitor must prepare their car (on a visible place) in order to fit a wire, a plate and a seal on the engine block.

12 OTHER PROCEDURES

12.1 Start procedure and order

There will be no ceremonial start in this rally. The official start of the rally will be at TC 1 (before SSS 1 Karlstad Super Special Stage). A start assembly area will be established before the TC 1. The start order for section 1 will be published on Thursday 14 February at 15:00. See also Art. 12.5 Super Special Stage.

There will be a pre start show including presentation of cars and drivers starting from 19:00. Further details will be given in Rally Guide 2.

The presence of team mechanics or any work on the rally car (except by the crew) is not permitted at any time inside the arena. 2019 FIA WRC regulations Art. 60.8 will apply in the tyre marking zone.

12.2 Finish procedure

The finish of the Rally and the podium ceremony will take place at Torsby SP on Sunday 17 February. Further information will be given in Rally Guide 2

12.3 Permitted early check in

Crews are authorised to check in early without incurring a penalty at, TC 1A (end of Section 1) TC 8C (end of section 3), TC 16C (end of section 6) and TC 19A (end of section 9)

12.4 Change of time card during the rally

Timecard will be issued at the time control at TC 1, TC 1B, TC 4A, TC 8D, TC 11A, TC 14A, TC 16D, TC 17A and TC 18A

12.5 Super Special Stage, procedure and running order

SSS 1 and 15 (Karlstad Super Special Stage) will be run under Super Special Stage regulations. At this super special two cars will be given start at the same time on parallel positions. The cars will follow the route of the stage, changing lanes in a tunnel/bridge combination and will be crossing the finish line at the same position where they started.

Preceding the Super Special Stage there will be a start assembly area (SSS 1) and a regroup (SSS 15). In these areas competitors will be paired for the Super Special Stage.

The organiser reserves the right, at their own discretion, to pair the cars for SSS 1 on grounds of spectator interest. For SSS 15 the starting order will be according to the current running order. There will not be any mediazone prior to the yellow time control board at the regroup before SS15

The maximum time allowed on SS1 and SS 15 are 5 minutes. Any crew failing to complete SS 1 or SS 15 within the 5 minutes will be considered retired with the possibility to re-start the rally under Rally 2 regulations in accordance to Art 46 in the FIA Sporting regulations. Should a car stop in SSS 1 or 15 the car will immediately be towed, transported or pushed to the road section after the STOP control by the organiser. Any such car will be penalised as in 2019 FIA WRC Sporting Regulations Art. 46.2 and will be deemed to continue in Rally 2 from TC 1B or TC 16D, respecting the requirements of WRC Art. 47, unless the competitor notifies the organiser otherwise.

If the running of the SSS 1 and/or SSS 15 is interrupted, this will be signalled to the drivers by red flags. When given this signal, the driver must immediately reduce speed and follow the instructions of any marshals or other officials. Failure to comply with this rule will entail a penalty at the discretion of the Stewards.

The speed limit at the trotting course is 20 km/h before the start line and after the finish line, and all crews are reminded to oblige and follow the speed limit.

Possible further instructions concerning the running of the SSS 1 and SSS 15 will be given in a bulletin.

12.6. Start order section 7

Reference to Art. 45.2 in the FIA WRC Sporting regulation: The start order for section 7 will be based on the provisional overall classification after SS 14 (i.e both SS 15 Karlstad and SS 16 Torsby Sprint will be considered as super special stages)

12.7. Organisers promotional activities

Promotional activities will be published in Rally Guide 2

12.8 Retired cars restarting the rally, Rally 2

With reference to Art. 46 in 2019 FIA WRC Sporting Regulations crews which fails to complete a section will be assumed to re-start the rally from the start of the next section following the overnight regroup. If not they must confirm with the clerk of the course by completion of the form located in the road book and lodging it with the organiser as soon as possible before publication of the re-start list.

Any driver re-starting the rally must present their cars at the overnight parc fermé at the latest four hours before the start of the next section following the overnight regroup.

For cars driven by Priority drivers, a special time card will be used for the maximum of 3 hours service.

12.9 Power Stage

With reference to Art. 13.3 in the 2019 FIA WRC Sporting Regulations special stage 19 Torsby will be run as the "Power Stage".

12.10 Change of on-board camera data

With reference to Art. 31.8 in the 2019 FIA WRC Sporting Regulations, change of on-board camera data are allowed at all remote refuel zones during the rally.

12.11 Environmental prescriptions

Teams are obligated to follow directions and objectives in the organisers environmental policy. Further information in Rally Guide 2.

13 IDENTIFICATION OF OFFICIALS

The post chiefs and other officials will be identified with tabard as follows:

Stage Commander:	Red
Stage Safety Officer:	Orange with white stripe
Safety Marshal:	Orange
Time Control Officer:	Blue
Doctor:	White
Red flag marshal:	Yellow with blue radion point symbol
Media Officer:	Green
Technical marshals:	Black
Competitor Relations Officer:	Red jackets

14 PRIZES

General Classification

1. Overall winner
2. 2nd overall
3. 3rd overall

Manufacturer

1. Winning manufacturer

WRC2 Pro Rally Championship classification:

1. Winner
2. 2nd
3. 3rd

WRC 2 Rally Championship classification:

1. Winner
2. 2nd
3. 3rd

FIA Junior WRC

1. Winner
2. 2nd
3. 3rd

Perpetual Trophies

- Overall winner
- Colins Crest Award
- Best driver from the county of Värmland

15 FINAL CHECKS AND PROTESTS

15.1 Final checks - attendance and location

The final checks will take place at Stjerneskolan, Torsby on Sunday 17 February. Cars subject to final checks (decision by the Stewards and announced to the competitor concerned at the finish TC) must have one representative of the entrant as well as mechanics (in case of dismantling) present at the final check. Rally studded tyres are forbidden at the workshop at Stjerneskolan and the competitor concerned must prepare for tyre change outside the workshop before the final check.

15.2 Protest fees

The protest fee is € 1000

15.2.1 Additional fees

If the protest requires dismantling and reassembly of different parts of the car, the claimant must pay an additional deposit

For a protest involving a clearly defined part of the car (engine, transmission, steering, braking system, electrical installation, bodywork etc): € 500

For a protest involving the whole car: € 1000

15.3 Appeal deposit

Sum for an international appeal deposit (FIA): € 6 000

APPENDIX 1 - ITINERARY THURSDAY, SHAKEDOWN AND SECTION 1

SD		THURSDAY 14 FEBRUARY			Sunrise 07:50 Sunset 16:55	Version 2.0 2018-12-11
TC/SS	Location	SS	Distance Liaison	Total	Target Time	First car due
	Service Park Torsby					
	SD Start		8,64	8,64		09:00
SD	Shakedown Skalla	6,86				
	Service Park Torsby		12,64	19,50		
	SD Totals	6,86	21,28	28,14		

Section 1		THURSDAY 14 FEBRUARY				
TC/SS	Location	SS	Distance Liaison	Total	Target Time	First car due
TC 1	Start Färjestad Trotting Course Karlstad					20:04
SS 1	Super Special Stage Karlstad 1	1,90				20:08
TC 1A	Parc Fermé Torsby IN		102,33	104,23	1:50	21:58
	Thursday Totals	1,90	102,33	104,23		

APPENDIX 1 - ITINERARY FRIDAY, SECTION 2 - 3

Section 2-3		FRIDAY 15 FEBRUARY			Sunrise 07:47	Version 2.0
					Sunset 16:58	2018-12-11
TC/SS	Location	SS	Distance Liaison	Total	Target Time	First car due
TC 1B	Parc Fermé Torsby OUT/Service IN					06:00
	Service A (Torsby)	(1,90)	(102,33)	(104,23)	0:15	
TC 1C	Service OUT					06:15
RZ 1	Refuel Service Out (All competitors) Distance to next refuel		(0,00)			
		(21,26)	(104,72)	(125,98)		
TC 2			92,23	92,23	1:37	07:52
SS 2	Hof-Finnskog 1	21,26				07:55
RZ 2	Remote refuel Namná (All competitors) Distance to next refuel		(12,49)			
		(42,98)	(101,53)	(144,51)		
TC 3			44,79	66,05	1:10	09:05
SS 3	Svullrya 1	24,88				09:08
TC 4			16,44	41,32	0:48	09:56
SS 4	Röjden 1	18,10				09:59
TC 4A	Regroup and Technical Zone IN		52,79	70,89	1:20	11:19
TC 4B	Regroup OUT/Service IN				0:15	11:34
	Service B (Torsby)	(64,24)	(206,25)	(270,49)	0:40	
TC 4C	Service OUT					12:14
RZ 3	Refuel Service Out (All competitors) Distance to next refuel		(0,00)			
		(21,26)	(104,72)	(125,98)		
TC 5			92,23	92,23	1:37	13:51
SS 5	Hof-Finnskog 2	21,26				13:54
RZ 4	Remote refuel Namná (All competitors) Distance to next refuel		(12,49)			
		(51,91)	(92,67)	(144,58)		
LFZ	Light Fitting Zone Namná 12,57 km					
TC 6			44,79	66,05	1:20	15:14
SS 6	Svullrya 2	24,88				15:17
TC 7			16,44	41,32	0:48	16:05
SS 7	Röjden 2	18,10				16:08
TC 8			42,97	61,07	1:03	17:11
SS 8	Torsby 1	8,93				17:14
TC 8A	Technical Zone IN		0,96	9,89	0:26	17:40
TC 8B	Technical Zone OUT/Service IN				0:10	(17:50)
	Flexi Service C (Torsby)	(73,17)	(197,39)	(270,56)	0:45	
TC 8C	Service OUT/Parc Fermé Torsby IN					(18:35)
All cars must be returned to Parc Fermé no later than						21:00
Friday Totals		137,41	403,64	541,05		

Section 2

Section 3

APPENDIX 1 - ITINERARY SATURDAY, SECTION 4 - 6

Section 4-6		SATURDAY 16 FEBRUARY			Sunrise 07:45 Sunset 17:00	Version 2.0 2018-12-11
TC/SS	Location	SS	Distance Liaison	Total	Target Time	First car due
TC 8D	Parc Fermé Torsby OUT/Service IN					06:00
	Service D (Torsby)	(0,00)	(0,00)	(0,00)	0:15	
TC 8E	Service OUT					06:15
RZ 5	Refuel Service Out (All competitors) Distance to next refuel	(46,53)	(0,00) (99,04)	(145,57)		
TC 9			76,03	76,03	1:26	07:41
SS 9	Rämmen 1	23,13				07:44
TC 10			20,77	43,90	0:48	08:32
SS 10	Hagfors 1	23,40				08:35
RZ 6	Remote refuel Hagfors (All competitors) Distance to next refuel	(14,21)	(2,24) (58,06)	(72,27)		
TC 11			26,76	50,16	0:59	09:34
SS 11	Vargåsen 1	14,21				09:37
TC 11A	Regroup and Technical Zone IN		33,54	47,75	1:01	10:38
TC 11B	Regroup OUT/Service IN				0:15	10:53
	Service E (Torsby)	(60,74)	(157,10)	(217,84)	0:40	
TC 11C	Service OUT					11:33
RZ 7	Refuel Service Out (All competitors) Distance to next refuel	(46,53)	(0,00) (99,04)	(145,57)		
TC 12			76,03	76,03	1:26	12:59
SS 12	Rämmen 2	23,13				13:02
TC 13			20,77	43,90	0:48	13:50
SS 13	Hagfors 2	23,40				13:53
RZ 8	Remote refuel Hagfors (All competitors) Distance to next refuel	(14,21)	(2,24) (95,55)	(109,76)		
LFZ	Light Fitting Zone Hagfors 2,30 km					
TC 14			26,76	50,16	1:09	15:02
SS 14	Vargåsen 2	14,21				15:08
RZ 9	Remote refuel Deje (All competitors) Distance to next refuel	(4,70)	(71,03) (135,44)	(140,14)		
TC 14A	Regroup Karlstad IN		99,66	113,87	1:54	17:02
TC 14B	Regroup Karlstad OUT				0:33	17:35
TC 15			1,01	1,01	0:06	17:41
SS 15	Super Special Stage Karlstad 2	1,90				17:45
TC 16			104,84	106,74	1:42	19:27
SS 16	Torsby Sprint	2,80				19:30
TC 16A	Technical Zone IN		0,96	3,76	0:20	19:50
TC 16B	Technical Zone OUT/Service IN				0:10	(20:00)
	Flexi Service F (Torsby)	(65,44)	(330,03)	(395,47)	0:45	
TC 16C	Service OUT/Parc Fermé Torsby IN					(20:45)
	All cars must be returned to Parc Fermé no later than					23:00
	Saturday Totals	126,18	487,13	613,31		

Section 4

Section 5

Section 6

APPENDIX 1 - ITINERARY SUNDAY, SECTION 7-9

Section 7-9		SUNDAY 17 FEBRUARY			Sunrise 07:42	Version 2.0
TC/SS	Location	SS	Distance Liaison	Total	Target Time	First car due
TC 16D	Parc Fermé Torsby OUT/Service IN					06:30
	Service G (Torsby)	(0,00)	(0,00)	(0,00)	0:15	
TC 16E	Service OUT					06:45
RZ 10	Refuel Service Out (All competitors)		(0,00)			
	Distance to next refuel	(21,19)	(72,27)	(93,46)		
TC 17			53,84	53,84	1:02	07:47
SS 17	Likenäs 1	21,19				07:50
TC 17A	Regroup Ambjörby IN		16,69	37,88	0:40	08:30
TC 17B	Regroup Ambjörby OUT				1:01	09:31
RZ 11	Remote refuel Ambjörby (All competitors)		(1,70)			
	Distance to next refuel	(30,12)	(78,42)	(108,54)		
TC 18			2,74	2,74	0:17	09:48
SS 18	Likenäs 2	21,19				09:51
TC 18A	Regroup Torsby SP IN		66,17	87,36	1:25	11:16
TC 18B	Regroup Torsby SP OUT				0:40	11:56
TC 19			10,76	10,76	0:19	12:15
SS 19	Torsby 2 (Power Stage)	8,93				12:18
TC 19A	Finish TC and Holding Area		0,49	9,42	0:20	12:38
	Podium Ceremony Service Park Torsby					(13:00)
	Sunday Totals	51,31	150,69	202,00		

TOTALS OF THE RALLY				
	SS	Liaison	Total	%
Thursday 14 february - 1 SS Section 1	1,90	102,33	104,23	0,6%
Friday 15 february - 7 SS Section 2-3	137,41	403,64	541,05	43,4%
Saturday 16 february - 8 SS Section 4-6	126,18	487,13	613,31	39,8%
Sunday 17 february - 3 SS Section 7-9	51,31	150,69	202,00	16,2%
Total - 19 SS	316,80	1143,79	1460,59	21,7%

APPENDIX 2 - RECONNAISSANCE SCHEDULE

Priority 1, P2P and 2 Drivers

Version 2.0

2018-12-11

Tuesday 12 February Stage	Allowed Time	SS km	Tot SS km x 2	Finish to Start	To Next Stage	Totals
SS 17/18 Likenäs	08:00-10:00	21,19	42,38	17,95	77,75	138,08
SS 2/5 Hof-Finnskog	10:00-13:00	21,26	42,52	31,15	44,79	118,46
SS 3/6 Svullrya	11:30-15:00	24,88	49,76	7,37	16,44	73,57
SS 4/7 Rödjen	12:30-16:00	18,10	36,20	14,80	46,22	97,22
Shakedown Skalla	14:00-17:30	6,86	13,72	5,96	2,91	22,59
SS 8/19 Torsby	14:30-18:00	8,93	17,86	10,87		28,73
Totals		101,22				478,65

Wednesday 13 February Stage	Allowed Time	SS km	Tot SS km x 2	Finish to Start	To Next Stage	Totals
SS 9/12 Rämnen	08:00-10:00	23,13	46,26	14,85	20,77	81,88
SS 10/13 Hagfors	09:00-12:00	23,40	46,80	24,71	26,76	98,27
SS 11/14 Vargåsen	10:30-13:30	14,21	28,42	28,26	35,04	91,72
SS 16 Torsby Sprint	11:45-14:30	2,80	5,60	3,87		9,47
Totals		63,54				281,34

Thursday 15 February Stage	Allowed Time	SS km	Tot SS km x 2	Finish to Start	To Next Stage	Totals
SS 1/15 SSS Karlstad	17:00-18:00	1,90	3,80	0,00		3,80

Priority 3 and Non Priority Drivers

Tuesday 12 February Stage	Allowed Time	SS km	Tot SS km x 2	Finish to Start	To Next Stage	Totals
SS 2/5 Hof-Finnskog	08:00-10:00	21,26	42,52	31,15	44,79	118,46
SS 3/6 Svullrya	09:45-12:00	24,88	49,76	7,37	16,44	73,57
SS 4/7 Rödjen	11:00-13:30	18,10	36,20	14,80	52,72	103,72
SS 17/18 Likenäs	12:30-16:00	21,19	42,38	17,95	72,93	133,26
Shakedown Skalla	14:30-17:30	6,86	13,72	5,96	2,91	22,59
SS 8/19 Torsby	15:00-18:00	8,93	17,86	10,87		28,73
Totals		101,22				480,33

Wednesday 13 February Stage	Allowed Time	SS km	Tot SS km x 2	Finish to Start	To Next Stage	Totals
SS 11/14 Vargåsen	08:00-10:00	14,21	28,42	28,26	49,58	106,26
SS 9/12 Rämnen	09:30-12:00	23,13	46,26	14,85	20,77	81,88
SS 10/13 Hagfors	10:45-14:00	23,40	46,80	24,71	69,96	141,47
SS 16 Torsby Sprint	13:00-15:30	3,43	6,86	3,87		10,73
Totals		64,17				340,34

Thursday 14 February Stage	Allowed Time	SS km	Tot SS km x 2	Finish to Start	To Next Stage	Totals
SS 1/15 SSS Karlstad	16:00-17:00	1,90	3,80	0,00		3,80

APPENDIX 3 - COMPETITORS RELATIONS OFFICERS

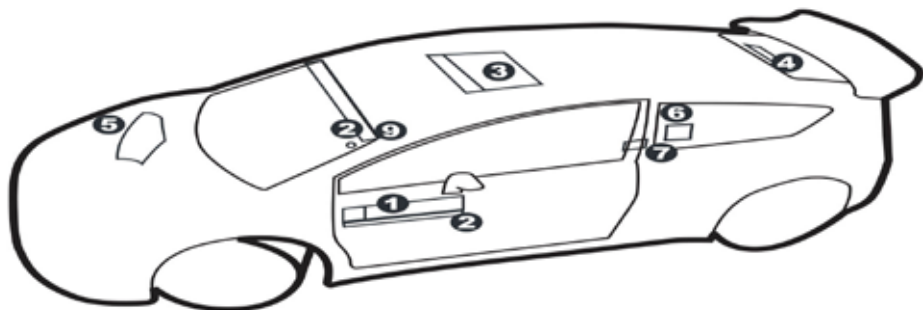


Janne Rydh
Sweden
(languages: Swedish, English)



Jacky Jung
France
(languages: French, English, German)

APPENDIX 4 - COMPETITION NUMBERS AND ADVERTISING



1. 2 x Doorplates with competition number

67 cm wide and 17 cm high. The top of the plate shall be placed between 7 cm and 10 cm below the bottom window line. No other signage shall be placed within 10 cm of the plate. Advertising: Will be announced in a bulletin.

2. Each car eligible to score points in the Manufacturers, WRC2 or Junior WRC Championships, must affix a specific panel provided by the promotor

3. 1 x Roof panel with competition number

50 cm wide and 52 cm high. Placed on the roof with the top towards the front of the car. Advertising: Will be announced in a bulletin.

4. 1 x Rear window plate and competition number

30 cm wide and 10 cm high. Placed at the bottom in the centre of the rear window. Advertising: Will be announced in a bulletin

5. Rally plate with starting number

43 cm wide and 21,5 cm high

6. Rear side windows

2 x competition numbers 20 cm high - shall be placed at the top of the rear side windows. The name of the driver with his/her passport nationality national flag must appear in the rear side window of both sides of the car (under the starting numbers).

For further details see 2019 FIA WRC Sporting Regulations.

Stickers affixed by the scrutineers at scrutineering:

7. Check card

(10 cm x 6 cm) will be affixed on the car, at roll-cage codriver side.

9. 2 minutes sticker

Affixed on the cars (on the roof left upper corner over the wind screen) with a start interval of 2 minutes.

APPENDIX 5 - OVERALLS, HELMETS AND OTHER SAFETY EQUIPMENT

All entrants and drivers are reminded of the Appendix L to the 2019 International Sporting Code, in particular regarding chapter III - Drivers' equipment (helmets, flame-resistant clothing, frontal head restraint (FHR) and safety belts).

These regulations apply to Shakedown as well.

Helmets

All crews must wear crash helmets which meet one of the standards listed in FIA Technical list no. 25.

P1 drivers must meet the FIA Standard 8860 - Advanced Helmet Test Specification (FIA Technical list no. 33)

Frontal Head Restraint (FHR)

FIA-approved FHR systems are mandatory.

The wearing of any device intended to protect the head or neck and attached to the helmet is prohibited, unless the device has been homologated according to the FIA Technical list no. 29 and 41.

Flame resistant clothing

All crews must wear overalls as well as gloves (optional for co-drivers), long underwear, a balaclava, socks and shoes (see also Art. 11.3 in these regulations) homologated to the FIA 8856 - 2000 standard (FIA Technical list no. 27).

It is permitted that drivers and co-drivers may wear shoes which do not comply with the FIA 8856-2000 standard. Drivers wearing shoes not complying with the standard may wear shoes adapted to the conditions.

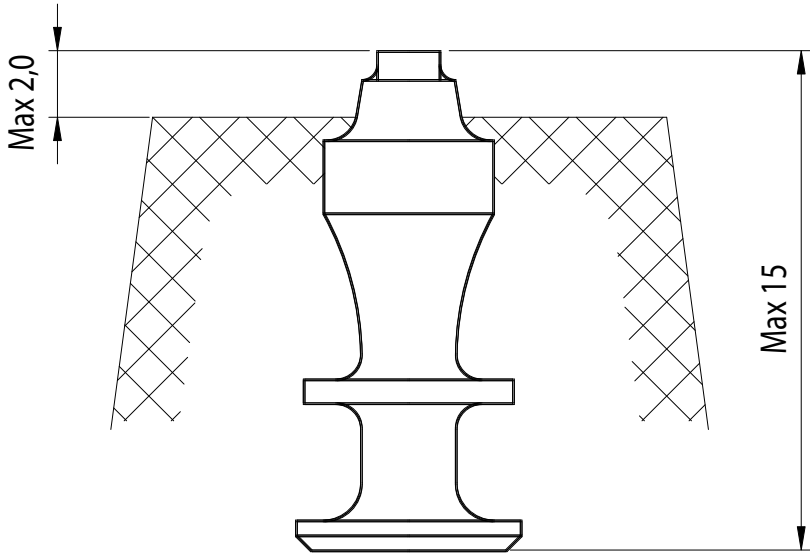


CLOSER TO RALLY.

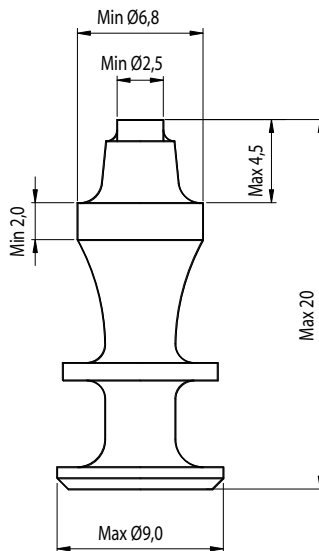
**APPENDIX 6 - FIA SAFETY TRACKING DEVICE - INSTALLATION
AND OPERATION INSTRUCTIONS**

Will be announced in a Bulletin.

APPENDIX 7 - STUDDED TYRES - RECONNAISSANCE



APPENDIX 8 - STUDDED TYRES - RALLY



APPENDIX 8 - SPECIFIC ITEMS FOR NATIONAL CARS

A8.1 General

Competitors in classes NAT4 and NAT2 must follow all prescriptions of the FIA WRC Sporting Regulations and these Supplementary Regulations (SR), unless stated otherwise or different prescriptions are given in this appendix 8.

National cars may participate in Rally Sweden under the prescriptions of FIA WRC, Art. 4.4, on the following conditions:

- the cars conform with SBF and NBF technical regulations listed below in Art.A8.2 and fulfil the FIA safety requirements of Appendix J, Art. 253
- the crew and entrant have valid international licences from SBF or NBF

A8.2 Eligible Cars

The following cars have been accepted for participation by the SBF and NBF:

Class NAT4:		
Homologation No.	Make	Model
NAT 014	Mitsubishi	Mirage
N,A-5660	Mitsubishi	Lancer Evolution VII
N-5673	Mitsubishi	Lancer Evolution VIII MR
N-5688	Mitsubishi	Lancer Evolution IX
N,A-5656	Subaru	Impreza WRX STi (2002), GDB
N,A-5676	Subaru	Impreza WRX STi (2004), GDB
N,A-5695	Subaru	Impreza WRX STi (2005), GDB
A-5729	Ford	Fiesta S2000
A-5721	Skoda	Fabia S2000
A-5705	Peugeot	207 S2000

Class NAT2:		
Homologation No.	Make	Model
N,A-5646	Honda	Civic Type-R
N,A-5881	Ford	Fiesta ST
N,A-5636	Renault	Clio 1.6 16V
N,A-5637	Renault	Clio Sport 2.0 16V
N,A-5659	Renault	Clio RS 2.0 RS

A8.3 Entries

Those wishing to take part in Rally Sweden 2019 with a NAT2 or NAT4 must fill in the electronic entry form available at www.rallysweden.com/en/competitors/, duly completed before 15 January at 15:00.

The entry will only be accepted if accompanied by the total amount of the Entry Fee. To be accepted, competitors must send a proof of payment of the entry fee by e-mail to the secretary of the event (vera@rallysweden.com) by the closing date of entries. Foreign drivers must submit an approval from their ASN in the same e-mail.

Entry Fee: SEK 15 000 + 6 % VAT (Total: SEK 15 800,-)

Entry package for NAT2 and NAT4 will be the same as for a private entrant, see 4.4.2 in SR

A8.4 Tyres

The make and model of tyres for cars in classes NAT4 and NAT2 are free, as long as they are provided with moulded barcode numbers according to FIA WRC, Art. 60.14.

The maximum number of tyres used during the rally is 22.

When using tyres specified in these Supplementary Regulations, Art. 7.1, they must be ordered from the tyre manufacturers no later than 4 weeks before the event with the form given in Rally Guide 2.

A8.5 Fuel

All drivers must use FIA fuel as provided by the FIA appointed supplier. All prescriptions of these Supplementary Regulations, Art. 8 apply.

A8.6 Scrutineering

All prescriptions of SR, Art. 11 apply, except for sealing and marking, where only turbos and their spareparts will be sealed.

Study carefully the requirements of FIA Safety Tracking Device installation.

National extensions for time limits of any safety equipment (car or driver) do not apply. Extinguishing systems must be installed (Appendix J, Art. 253-7.2).

Anti-torpedo tabs for both mounted systems and manual extinguishers are required.



CLOSER TO RALLY.

NOTES

WARNING MOTORSPORT CAN BE
DANGEROUS

