



Rally Guide



INDEX

1. Introduction and welcoming.....	5
1.1 Officers	6
Stewards of the Meeting	
FIA / RFEDA Observer and Delegates	
Senior Officials	
2. Contact details.....	7
2.1 Permanent Secretariat	7
2.2 Rally HQ Location	7
Rally Office Timetable	
2.3 Media Center Location	7
3. Programme and Critical Deadlines	8
4. Entry Details	10
4.1 Titles	10
4.2 Entry Fees	11
5. Service Park.....	11
5.1 Location	11
5.2 Facilities at Service Park.....	12
5.3 Location Map	12
6. Two-way Radio	12
7. Fuel / Tyres	13
7.1 Single Fuel - Ordering Procedure.....	13
7.2 Tyres	13
8. Ship Transport - Import and Export of Vehicles and Spare Parts.....	14
9. Helicopters.....	14
10. Hospitality.....	14
10.1 Teams Hospitality	15
11. Accommodation	15
12. Reconnaissance	17
12.1 Procedure for registration.....	17
12.2 Specific and / or national restrictions – Speed Limit on the SS.....	17
12.3 Installation of Speed Control Checking Devices / GPS.....	18
Warning & Notices	
GPS Tracker Unit Manipulations	
13. Scrutineering, sealing and marking	19
13.1 Scrutineering Venue and Timetable	19
13.2 Mud Flaps.....	19
13.3 Windows / Nets.....	19
13.3.1 Driver's and co-driver's names rear side Windows	19
13.4 Sealing of engine block.....	20
13.5 Driver's Safety Equipment.....	20
13.6 Installation of Safety Tracking System	20
Warning & Notices	
GPS Tracker Unit Manipulations	
GPS Distribution / Return	
13.7 Final Scrutineering	22
14. Free Practice / Qualifying.....	22
14.1 Shakedown.....	23
15. Other Procedures	23
15.1 Ceremonial Start Procedure.....	23
15.2 Super Special Stage Procedure.....	23
15.3 Roundabouts SS6, SS7 & SS10	24
15.4 Starting system of special stages.....	24

15.5 Finish Procedure.....	24
16. PR Activities / Rally Shows.....	24
17. Media.....	24
17.1 Contact	24
17.2 Accreditation Procedure / Criteria and Deadline.....	25
17.3 Location and opening Hour	25
Media Programme	
17.4 Teams' Media Contacts	26
17.5 Expected Media Coverage.....	26
18. ERC Passes and Media Accreditation	27
19. Medical and Safety Services.....	27
19.1 Emergency Number	27
Hospitals in the Area	
Police	
Towing Service	
Pharmacies	
20. Information about Gran Canaria.....	29
Climate in Gran Canaria	
Time Zone	
Sunrise / Sunset	
Currency	
21. List of useful Facts and Services.....	30
Hire Car Companies	
Private Bus and Luxury Car Services	
Taxis	
Airport and Airlines	
Copy Service	
Telephone Services	
Private Security	

APPENDIX

- A1. Itinerary / General Map (Summary)
- A2. Map - Leg 1
- A3. Map - Leg 2
- A4. Stages Maps
- A5. Shakedown Map
- A6. 2019 Itinerary compared with 2018
- A7. Recce Schedule
- A8. Santa Catalina Area Distribution Map
- A9. Rally HQ Layout
- A10. Service Park Map
- A11. Las Palmas de Gran Canaria Map
- A12. Refuelling Map
- A13. Start and Finish Area Drawing
- A14. Road Book Airport - Santa Catalina Park
- A15. Road Book Service Park – Shakedown – Service Park *(please refer Shakedown book)*
- A16. Media Accreditation Application



A17. Ship Transport Protocol – Import and Export of Vehicles

A18. Accreditation of Competition Foreign Vehicles Request (AVEC)

1. Introduction and welcoming

Although time passes and we are leaving behind editions of the Rally Islas Canarias, it is always a special moment to address all that group of fans, which is undoubtedly one of the greatest actives that this event has. It is your dream, yours, that drives us to improve year after year and it is your passion that helps us face each edition with the encouragement of reaching further.

We reached number 43 firmly established in the FIA European Rally Championship, the second most important international championship, which will allow us to have some of the drivers, co-drivers and teams that, very soon, will reach the FIA World Rally Championship. We can boast of having seen through our stages, names that are legend of motorsport thanks to the Rally Islas Canarias and being in this championship of continental nature is a guarantee of quality of participants and mounts and diversity of nationalities.

As a member of the organizational team, I recognize that it is a responsibility to know that, year after year, our rally bears the name of Gran Canaria and the Canary Islands to millions and millions of homes around the world. That is why we strive to offer an attractive itinerary for the teams, but also capable of transmitting to viewers all over the planet the natural and scenic wealth of our Archipelago.

In this sense, the collaboration of the municipalities that make up the island of Gran Canaria is key. If in 2018 Artenara, Valsequillo, San Mateo, Tejeda, Las Palmas de Gran Canaria, Arucas, Moya and Gáldar turned to be able to count on an attractive itinerary as able to bring this sport to new fans from all corners of the island, this year Valleseco is added.

If it is a pride to represent Spain in the FIA ERC, it is also to represent the Canary Islands in the calendar of the new Spanish Super Rally Championship. We must congratulate the Real Federación Española de Automovilismo for the launch of this mixed championship called to be the elite of rallies nationwide both in terms of teams and evenets of it calendar.

We believe that with all these 'wicks', the 43 Rally Islas Canarias will be the sporting event of the year in our land. Enjoy it.



Mr. Germán Morales

President of the Organizing Committee of the Rally Islas Canarias

**THIS RALLY GUIDE IS FOR INFORMATION ONLY
AND CARRIES NO REGULATORY POWER**

1.1 Officials

Organisation Committee

Chairman	Germán Morales Hernández Miguel Ángel Suárez Guerra Miguel Espino Falcón
----------	--

Stewards of the Meeting

Chairman	Jean-Pierre Tardent Janis Krastins Jose M ^a Bellot
Secretary of the Stewards	Tamara Gonçalves

FIA / RFEDA Observer and Delegates

FIA Sporting Delegate	Anita Passalis
FIA Technical Delegate	Karl-Heinz Goldstein
Asst. To FIA Technical Delegate	Lionel Berard
RFEDA Technical Delegate	Fernando Álvarez
Technical Delegate	Manel Lloret
Asst. to Technical Delegate	Ángel Quintana
RFEDA Safety Delegate	Ángel Esteve
RFEDA Sporting Delegate	José Vicente Medina

Senior Officials

Clerk of the Course	Manuel Vidal
Asst. Clerk of the Course	José Ramón González José Juan Marín Eduardo Sánchez
General Secretary of the Meeting	Jose Guerra
Asst. Secretary of the Meeting	David Espino
Chief Safety Officer	Miguel Espino
Asst. Safety Officer	Carlos Tamargo Borja Pérez
Chief Medical Service	M ^a Crucelia Robayna
Ceremonial Start and Trophies	Karen Hoo-Paris
Communication Coordinator	Miguel Santana
Chief Scrutineers	Julio García
Scrutineers Coordinator	Ángel Quintana
Sponsoring & Advertising Officer	Eduardo Batista
Rally Press Officer	Róber Martí Javier Viera
Competitors' Relations Officers	Enrique Mattes
Chief Results Officer	Emilio Macías
Chief of Timing	José Nicolás González Benjamín Suárez
Chief Special Stages Officers	José Benítez-Inglott Jonás Pérez Carmelo Jiménez Julio Martínez

Special Stages Safety Officers

Chief of Parc Fermé
Chief of Service Park
Chief of Refuelling
Chief of Remote Refuelling

Iván Rodríguez
Guillermo García
Isidro Delgado
José Andrés Negrín
Hierón Armas
Damián Suárez
Eutimio Santana
Roberto del Rosario

2. Contact details

2.1 Permanent Secretariat

CLUB DEPORTIVO TODO SPORT

C/ Pepe García Fajardo, 14. Pta. 18
35012 Las Palmas de GC

Telephone: (+34) 669150412
E-mail: secretaria@rallyislascanarias.com
Website: www.rallyislascanarias.com

2.2 Rally HQ Location

Hotel AC Gran Canaria
Eduardo Benot, 5
35007 Las Palmas de Gran Canaria
GPS: N 28° 8.383' W 15° 25.766'

Telephone: (+34)
E-mail: secretaria@rallyislascanarias.com

Rally Office Timetable

Monday	29 th April:	12:00h – 21:00h
Tuesday	30 th May:	10:00h – 21:00h
Wednesday	1 st May:	09:00h – 22:00h
Thursday	2 nd May:	08:30h – 23:00h
Friday	3 rd May:	09:00h – 22:00h
Saturday	4 th May:	07:45h – 21:00h

2.3 Media Center Location

Edificio Miller
Santa Catalina Park
35007 Las Palmas de Gran Canaria

Telephone: (+34)
E-mail: prensa@rallyislascanarias.com

Programme and Critical Deadlines

Monday, 18th February

14:00	Issuing of the Itinerary and Map	Website
	Publishing of the Supplementary Regulations	Website
	Opening date for Entries	Website
	Issuing of the Rally Guide	Website

Thursday, 11st April

14:00	Issuing of the Rally Guide 2	Website
-------	------------------------------	---------

Wednesday, 17th April

20:00	Closing date for Entries	Permanent Secretariat
	Deadline for sending facilities form	
	Delivery of the Road Book	Website

Monday, 22nd April

14:00	Publication of the Entry List	Website
-------	-------------------------------	---------

Sunday, 28th April

12:00	Opening Service Park	Plaza de Canarias
-------	----------------------	-------------------

Monday, 29th April

12:00	Rally HQ Opening	Hotel AC
18:00-20:00	Delivery of Reconnaissances	Hotel AC
	documentation:	
	Reconnaissances GPS distribution	
	<i>(A detailed timetable will be published)</i>	

Tuesday, 30th May

08:00-20:00	Reconnaissances for all teams	According to Appendix 2
12:00	Media Center Opening	Edificio Miller
17:00-20:00	Administrative Checks opcional	Hotel AC
	GPS distribut	
	<i>(A detailed timetable will be published)</i>	

Wednesday, 1st May



08:00-20:00 Reconnaissances for all teams	According to Appendix 2
09:00-21:00 Accreditation Media Center	Edificio Miller
13:00-20:00 Administrative Checks rest of team	Hotel AC
<i>(timetable will be published)</i>	
Closing date for Shakedown registrations	
Recces GPS returns / Rally GPS distribute.	
13:00-22:00 Scrutineering to all team	Santa Catalina Park
<i>(A detailed timetable will be published)</i>	
20:00-21:00 Team Managers meeting (Priority driver)	Hotel AC

Thursday, 2nd May

09:00-11:00 Free Practice	GC-132
(FIA, ERC, ERC2 & ERC3 priority drivers)	
11:30 Time-card delivery QS	GC-132
11:45-12:45 Qualifying Stage	GC-132
(FIA, ERC, ERC2 & ERC3 priority drivers)	
13:30-15:30 Shakedown	GC-132
13:00 First Stewards' Meeting	Hotel AC
13:30 Publication of Provisional classification QS	Official notice board
17:00 Selection of starting positions	Zone Podium
(Top 15 priority drivers)	
17:30 Pre-Event press conference	Zone Podium
17:30-18:30 Autograph Session	Zone Podium
18:30 Publication of Start List for the Ceremonial Start	Official notice board
18:30 Publication of Start List Leg 1 - Section 1	Official notice board
19:30-20:00 Presentation all entrants for Ceremonial Start	Zone Podium
20:10 Driver's Official Photo	Zone Podium
20:30 Ceremonial Start	Zone Podium

Friday, 3rd May

09:00 Time card distribution	Service Park
09:15 1 st driver start - Leg 1 – Section 1	Service Park

18:56	1 st driver arrival - End Leg 1	Parc Fermé (Flexiservice)
20:30	Publication Start List for Leg 2	Official Notice Board

Saturday, 4th May

08:45	Time card distribution	Parc Fermé
09:00	1 st driver start - Leg 2	Parc Fermé
17:42	1 st driver arrival - End of the Rally	Podium
18:15	Prizes giving	Podium
19:15	Final checks	Marmotor Canarias
19:15	End-Event press conference	Zone Podium
20:00	Time limit for the GPS returns	TC-16C
20:15	Publication Provisional Classification	Official Notice Board

3. Entry Details

3.1 Titles

FIA European Rally Championship for Drivers and Co-Drivers

FIA European Rally Championship for Teams

FIA ERC 2 Championship for Drivers and Co-Drivers

FIA ERC 3 Championship for Drivers and Co-Drivers

FIA ERC Junior Championship for Drivers

FIA ERC 3 Junior Championship for Drivers

ERC Ladies Trophy

Spanish Rally Championship and its subsequent Cups and Trophies

Canarian Rally Championship

Las Palmas Provincial Championship

3.2 Entry Fees

			ERC TEAM		
ENTRY FEE			FIA ERC ERC Junior	ERC2	ERC 3 ERC 3 Junior
LEGAL O PRIVATE TEAM	ERC REGISTERED TEAM	With Advertising	2.950 €	2.600 €	1.000 €
		Without Advertising	4.950 €	4.600 €	2.000 €
		Qualifying Stage	Incluido	Incluido	Incluido
		Shakedown			
		Wifi	Incluido	Incluido	Incluido
		Electricity	Incluido	Incluido	Incluido
		Water	Incluido	Incluido	Incluido
	NON REGISTERED	With Advertising	2.950 €	2.600 €	1.000 €
		Without Advertising	4.950 €	4.600 €	2.000 €
		Qualifying Stage			
		Shakedown	Incluido	Incluido	Incluido
		Wifi	150 €	150 €	150 €
		Electricity	300 €	300 €	300 €
		Water	150 €	150 €	150 €

**** Drivers taking part in the Qualifying will not be able to perform the Shakedown**

OTHER FEES	Price
Additional Services Plates	250€
Additional Auxiliary Plate	250€

4. Service Park

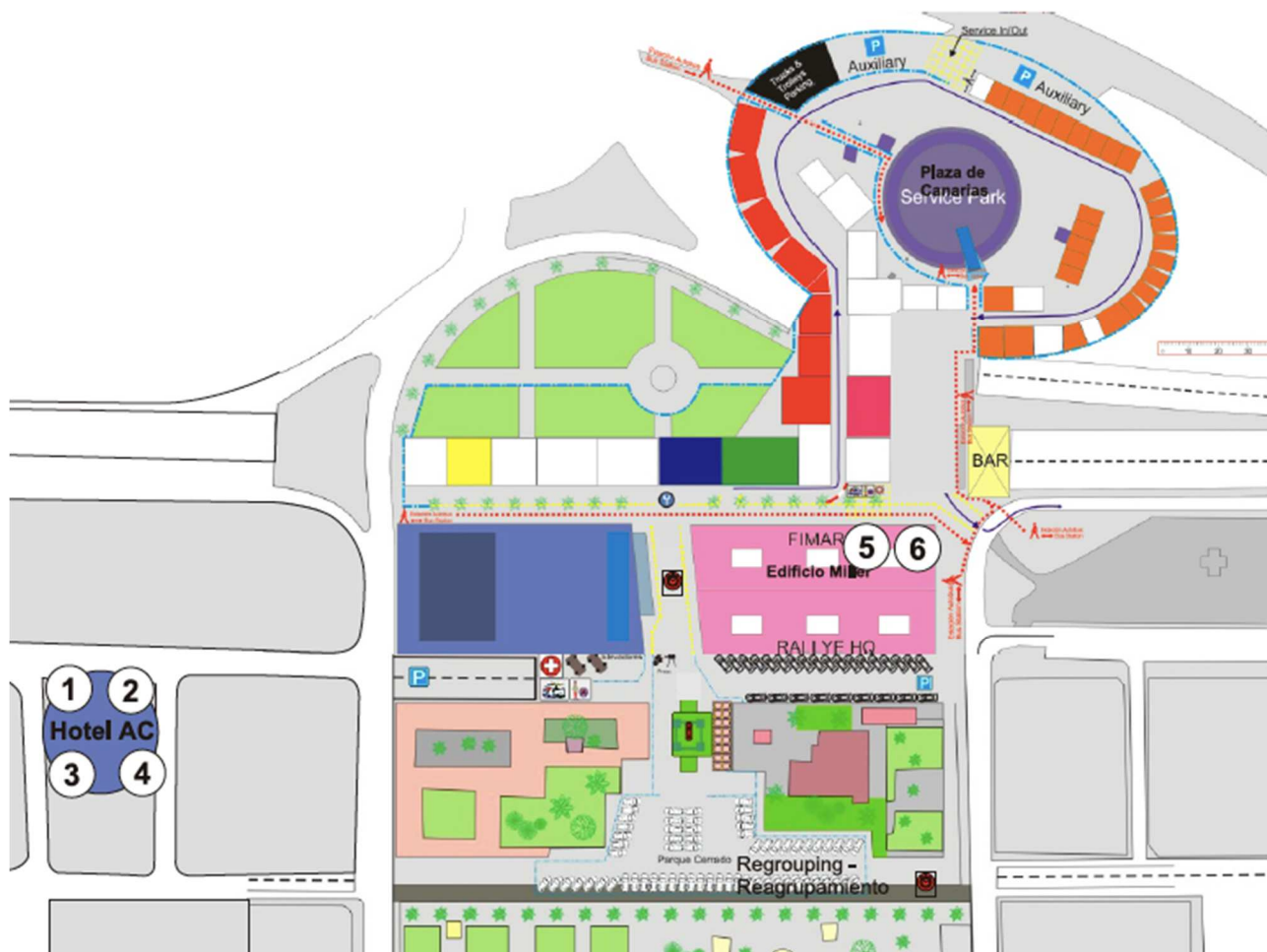
4.1 Location

Plaza de Canarias
35007 – Las Palmas de Gran Canaria
Las Palmas

4.2 Facilities at Service Park

Water, Electricity and WIFI facilities are included for ERC entrants, as detailed in 4.2 Entry Fees.

4.3 Location Map



- | | |
|---|------------------------------|
| ① Documentation
Verificaciones Administrativas | ④ HQ
Oficina Permanente |
| ② Information
Punto de información | ⑤ Press / Prensa |
| ③ Stewards
Comisarios Deportivos | ⑥ Radio
Emisoras de Radio |

5. Two-way Radio

UD Radio www.udlaspalmas.es/udradio 105.7 FM

ERC Radio www.fiaerc.com

6. Fuel / Tyres

6.1 Single Fuel – Ordering Procedure

Fuel must be in compliance with FIA 2019 ISC Appendix J.

During the rally, refuelling zone (RZ) and commercial filling stations is shown in the Road Book and Service Book.

In the refuelling zones (RZ) the maximum number of mechanics authorised to help for the refueling procedure must be two (2). Assistance for refuelling in the commercial filling stations is totally forbidden.

These mechanics are requested to be duly identified with the accreditations that will be issued by the Organisers. Therefore, it is compulsory to wear balaclava and fireproof gloves and overalls as per RRSR Art. 58.2.3 (it's not authorised to wear shirts, shorts, etc...).

6.2 Tyres

All tyres must comply with the article 60, read in conjunction with Appendix V of 2019 FIA Regional Rally Sporting Regulations.

All cars must be fitted with moulded tyres. Hand cutting or modification of the specified tread pattern is not permitted, unless otherwise permitted in the regional variation sporting regulations.

The list of homologated tyres is available on the FIA website, under the Regulations section.

Any chemical and/or mechanical treatment of tyres is prohibited.

Any device for heating the tyres once fitted on the rim is prohibited.

Whether fitted on rims or not, keeping tyres in an artificially heated environment below 35°C is allowed.

Each tyre must have either:

Two identical moulded barcode numbers (one on each side of the tyre / each barcode having a different colour as defined by the FIA) supplied by the 2019 FIA-approved barcode supplier, or:

- A single moulded barcode number supplied by the 2019 FIA-approved barcode supplier.

These barcodes will be used to check that the same tyres remain fitted to a particular car between tyre changes and that competitors are not exceeding the maximum quantities allowed. The tyre barcode must always be visible from outside the car.

The intentional modification of the design of the tyre or the number of studs on the tyres on or in the car is strictly forbidden.

- RC2 y RGT maximum 18
- RC3, RC4 y RC5 maximum 14

For the FIA ERC 3 Junior Championship, only PIRELLI tyres are eligible. Tyres can only be purchased on this event SERVICE PARK from the appointed tyre supplier service. All tyres must have their barcode recorded by Pirelli technicians. Competitors Registered for the ERC 3 Junior Championship must use the following type of tyres:

Tyre Manufacturer	Size	Name
PIRELLI	195/50-16	RK5
	195/50-16	RKW7
	195/50-16	RW

The maximum quantity for each driver for whole event is 14, to be chosen from the list below:

Tyre Manufacturer	Size - Name	Q.ty
PIRELLI	195/50-16 – RK5	14
	195/50-16 – RKW7	8
	195/50-16 – RW	6

For competitors eligible to take part in Free Practice / Qualifying, tyres will be taken from the overall quantity as per this article. The spare wheels will not be marked.

For competitors taking part in Shakedown, tyres will not be marked.

7. Ship Transport - Import and Export of Vehicles and Spare Parts

Please refer appendix A18.Ship Transport Protocol- Import and Export of Vehicles

The official Shipping company is Fred Olsen Express & Balearia. Teams have to send their ship transport necessities (dimensions and load distribution) to secretaria@rallyislascanarias.com for information about prices. Please contact to alvagest2005@gmail.com for information about protocols and customs documentation.

8. Helicopters

For information about registration, permission and helicopter hire, please contact to: secretaria@rallyislascanarias.com

9. Hospitality

This 43rd Rally Islas Canarias offers several VIP experiences suitable for teams, friends, visitors, family and sponsors.

We also work together with official guides of Gran Canaria, who offer touristic tours for groups in Gran Canaria, and special tours during the Rally.
For further information, please contact to secretaria@rallyislascanarias.com.

9.1 Teams Hospitality

The event's organiser offers catering options to the teams, although teams are allowed to provide their own catering for their crew and team in Service Park.

For further information about this and other questions, please contact to

[RESTAURANTE ELDER & CO](#)

Parque de Santa Catalina.

928 91 54 69

[Cantinas Estadio](#)

gresara@gmail.com

[+34 661 73 09 09](tel:+34661730909)

[Restaurante Terraza Elder](#)

<https://terrazaelder.com>

eventos@terrazaelder.com

reservas@terrazaelder.com

Address: Calle Eduardo Benot, 2, 35007 Las Palmas de Gran Canaria, Las Palmas

Phone: 928 68 94 98

Mobil +34 637 41 21 96

10. Accommodation

AC HOTEL GRAN CANARIA BY MARRIOT 4*

C/ Eduardo Benot, 3-5
35007 Las Palmas de Gran Canaria
Tel: (+34) 928 266 100
Fax: (+34) 928 229 139
reservas.acgrancanaria@ac-hotels.com

HOTEL SERCOTEL CRISTINA LAS PALMAS 5*

C/ Gomera, 6
35008 Las Palmas de Gran Canaria

Tel: (+34) 928 268 050
Fax: (+34) 928 268 411
hotelcristina@hotelcristinalaspalmas.com

HOTEL CONCORDE 4*

C/ Tomas Miller, 85
35006 Las Palmas de Gran Canaria
Tel: (+34) 928 262 750
Fax: (+34) 928 265 774
reservas@hotelconcorde.org

HOTEL BED&CHIC 3*

C/ General Vives, 76
35007 Las Palmas de Gran Canaria
Tel: (+34) 928 904 289
info@bedandchic.com

HOTEL EXE LAS CANTERAS 4*

C/ Portugal, 68
35010 Las Palmas De Gran Canaria
Tel: (+34) 902 932 424 / (+34) 928 224 062
Fax: (+34) 928 270 784
reservas@exelascanteras.com

AC HOTEL IBERIA BY MARRIOTT 4*

Avenue Alcalde J Ramirez Bethencourt, 8
35003 Las Palmas de Gran Canaria
Tel: (+34) 928 361 133
Fax: (+34) 928 361 344

HOTEL THE FATAGA & CENTRO DE NEGOCIOS 4*

C/ Néstor de la Torre, 21
35006 Las Palmas de Gran Canaria
Tel: (+34) 928 290 614
Fax: (+34) 928 292 786
reservas@hotelfataga.com

CANTUR CITY HOTEL 3*

C/ Sagasta, 28
35008 Las Palmas de Gran Canaria
Tel: (+34) 928 273 000
Fax: (+34) 928 272 373
rosa@hotelcantur.com

HOTEL FAYCAN 3*

C/ Nicolás Estébanez, 61
35007 Las Palmas de Gran Canaria
Tel: (+34) 928 270 650
Fax: (+34) 928 279 123
hotelfaycan@hotelfaycan.com

HOTEL NH PLAYA DE LAS CANTERAS 3*

Prudencio Morales, 41
35009 Las Palmas de Gran Canaria

Tel: (+34) 928 463 153
Fax: (+34) 928 464 801
nhplayadelascanteras@nh-hotels.com

BULL HOTEL REINA ISABEL & SPA 4*

C/ Calle Alfredo L. Jones, 40
35007 Las Palmas de Gran Canaria
Tel: (+34) 928 260100
Fax: (+34) 928 274558
mcabrera@bullhotels.com

HOTEL NH IMPERIAL PLAYA 4*

C/ Ferreras, 1
35008 Las Palmas de Gran Canaria
Tel: (+34) 928 468 854
Fax: (+34) 928 469 442
nhimperial@nh-hotels.com

HOTEL ALISIOS CANTERAS 3*

C/ Colombia, 12
35010 Las Palmas de Gran Canaria
Tel: +34 928 472 960

HOTEL DOÑA LUISA 3*

C/ Alfredo L. Jones, 29
35008 Las Palmas de Gran Canaria
Tel: +34 828 124 848
donaluisa@trujillocastellanos.com

HOTEL PUERTO CANTERAS 3*

C/ Benecharo, 13-15
35009 Las Palmas de Gran Canaria
+34 828014362
reservas@hotelpuertocanteras.com

HOTEL ASTORIA 3*

C/ Fernando Guanarteme, 54
35010 Las Palmas de Gran Canaria
Tel: (+34) 928 222750
Fax: (+34) 928 272499
astoria@bullhotels.com

HOTEL PARQUE 3*

C/ Muelle de las Palmas, 2
35003 Las Palmas de Gran Canaria
Tel: (+34) 928 368 000
Fax: (+34) 928 363 742
reservas@hparque.com

HOTEL ELBA VECINDARIO AEROPUERTO 4*

Avenida del Atlántico 353
35110 Vecindario – Santa Lucía de Tirajana
Tel: (+34) 928 724 300
Fax: (+34) 928 791 549

hvaeropuerto@anjoca.com

DESIGN PLUS BEX HOTEL 4*

C/ León y Castillo, 330
35007 Las Palmas de GC
Tel: (+34) 928 278 000

reservations.bex@designplushotels.com

11. Reconnaissance

11.1 Procedure for registration

Reconnaissance must be done with cars according to Art. 25 of 2019 FIA Regional Rallies Championships Sporting Regulations

Organisers will give a reconnaissance vehicle identification sticker and time card together with the reconnaissance documentation to all entrants to Monday 29th April, from 18:00 to 20:00 h.

Reconnaissances sticker must be affixed during reconnaissances on the top right of the front windscreen.

The presence of drivers and/or co-drivers on a special stage, in any way whatsoever will be considered as reconnaissance.

It is allowed to film the SS during the Reconnaissances.

Schedule:

Reconnaissance for all drivers will take part on:

- Tuesday 30th April from 08:00 to 20:00 h.
- Wednesday 1st May, from 08:00 to 20:00 h.

The programme according to Supplementary Regulations Appendix 2 must be fully respected by the crews.

Reconnaissances will be limited to a maximum of two (2) passages per Special Stage, even if it is run twice during the rally, at a reduced speed and fully respecting the Road Traffic Laws in Spain. In no circumstances may crews drive in the opposite direction of the rally on the special stages.

11.2 Specific and/or national restrictions – Speed limit on the SS

The maximum speed during reconnaissances of special stages is fixed at 80km/h except when it exist speed limit signs and through villages or towns.

It is **emphasised that reconnaissances is not practice**. All the Road Traffic Laws in Spain must be strictly adhered to and the safety and rights of the other road users must be respected.

Reconnaissance vehicles must be covered by the insurance as required by current legislation. No responsibility can be imputable to the Organisers.

Speeding during reconnaissance will incur a fine applied by the clerk of the course, according to 43rd Rally Islas Canarias' Supplementary Regulations.

11.3 Installation of Speed Control Checking Devices / GPS

All drivers are required to carry a GPS tracker unit in their cars. Details of the fitting time and location for these devices are detailed in the Programme.

Warning & Notices



WARNINGS

Electronic Red Flag



SOS



Request for immediate medical assistance or vehicle that totally prevents the passage of other participants



OK ?

From the Race Direction, confirmation of the current status of the participants is requested



Press the green button to indicate that medical assistance is not required and the vehicle does not obstruct the passage of other participants



+ 3 seg. SOS application



Precaución

Precaution

Very attentive, at the slightest doubt of danger reduce speed



Red Flag (Red Flag)

Participant neutralized

Reduce the speed immediately to less than 80 Km / h and follow the instructions of the Route Marshals. No overtaking.

All messages can be enabled or disabled from Clerk of the course.

The black button ESC cancels all warnings and notices except of request the current status (OK?)

If more than 20 km/h, you can not generate any warning SOS

GPS Tracker Unit Manipulations

Any attempt to tamper with, to manipulate or to interfere with the tracking device fitted to the reconnaissance car or any device that fails to record a trace due to external interference, will be reported to the stewards who may impose a penalty up to exclusion.

12. Scrutineering, sealing and marking

13.1 Scrutineering venue and timetable

The Cars must be presented to the scrutineers with the rally plates, competition numbers, optional advertising will be affixed at Santa Catalina Park.

Timetable *(A detailed timetable will be published)*

Date:	Wednesday 1 st May
Timetable	13:00 to 22:00 h (A detailed timetable will be published)
Place:	Santa Catalina Park

13.2 Mud flaps

According Appendix J Article 252.7.7

13.3 Windows / Nets

According Appendix J Article 253.11

13.3.1 Driver's and Co-driver's names rear side window

The first initial(s) and surname of both driver and co-driver, followed by the national flags of the country of the ASN from which they have obtained their licences, must appear on the rear side window on both sides of the car, adjacent to the competition number. The names must be:

- In white Helvetica
- In upper case for the initial(s) and first letter of each name with the remainder in lower case
- 6 cm. high and with a stroke width of 1.0 cm.

The driver's name shall be the upper name on both sides of the car.



13.4 Sealing of engine block

For all competitors, the engine block will be presented at the pre event scrutineering. Competitors are responsible for preparing your vehicle and having a wire for sealing. The seal of the engine block must be visible with the bonnet opened and must be possible to check the engine seals in Parc Ferme and or Technical Zone.



13.5 Driver's safety equipment

Every competitor is obliged to put forward full clothes, which will be used including helmets and FHR system, and filled safety equipment documents. Agreement will be checked with Appendix L chap. III and with technical regulations.

13.6 Installation of Safety Tracking System

All drivers are required to carry a GPS tracker unit in their cars. Details of the fitting time and location for these devices are detailed in the Programme.

The Safety Rally Tracking System must be installed, by supplier company, and in working order before the cars are presented for scrutineering.

Warnings & Notices

anube
SPORT

STELLA III

WARNINGS

Electronic Red
Flag



SOS

+ 3 seg.

Request for immediate medical assistance or vehicle that totally prevents the passage of other participants



OK ?

From the Race Direction, confirmation of the current status of the participants is requested

Press the green button to indicate that medical assistance is not required and the vehicle does not obstruct the passage of other participants

+ 3 seg. SOS application



Precaution

3 seg.

Vehicle stopped

Very attentive, at the slightest doubt of danger reduce speed



Red Flag (Red Flag)

Participant neutralized

Reduce the speed immediately to less than 80 Km / h and follow the instructions of the Route Marshals. No overtaking.

All messages can be enabled or disabled from Clerk of the course.

The black button ESC cancels all warnings and notices except of request the current status (OK?)

If more than 20 km/h, you can not generate any warning SOS

GPS Tracker unit manipulations

Any attempt to tamper with, to manipulate or to interfere with the tracking device fitted to the competing car or any device that fails to record a trace due to external interference, will be reported to the stewards who may impose a penalty up to exclusion.

GPS Distributions / Returns

Monday, 29th April

18:00 - 20:00 h	Hotel AC
Reconnaissances GPS distribution (A detailed timetable will be published)	

Wednesday, 1st May

13:00 - 20:00 h	Hotel AC
Recces GPS returns Installation of Rally GPS (A detailed timetable will be published)	

Saturday 4th May

19:15 h	TC-16C
Time limit for the GPS returns	

13.7 Final Scrutineering

The final scrutineering will take place on Saturday 4th May at 19:15 hrs at:

*Marmotor Canarias
Avda. Escaleritas, 178
Las Palmas de Gran Canaria*

Cars subject to final checks (by the decision of stewards) must have one representative of the entrant as well as mechanics (in case of dismantling) present at the final scrutineering.

13. Free Practice & Qualifying Stage

Day: Thursday 2nd May 2019

Location: Lomo Magullo, Telde. Start: N27°58,83' O15°28,32'

Stage lenght: 3,25kms

Distance from Service Park (Santa Catalina): 28,94 kms

Remote Service Parks: Valsequillo N27°59,55' O15°29,82'

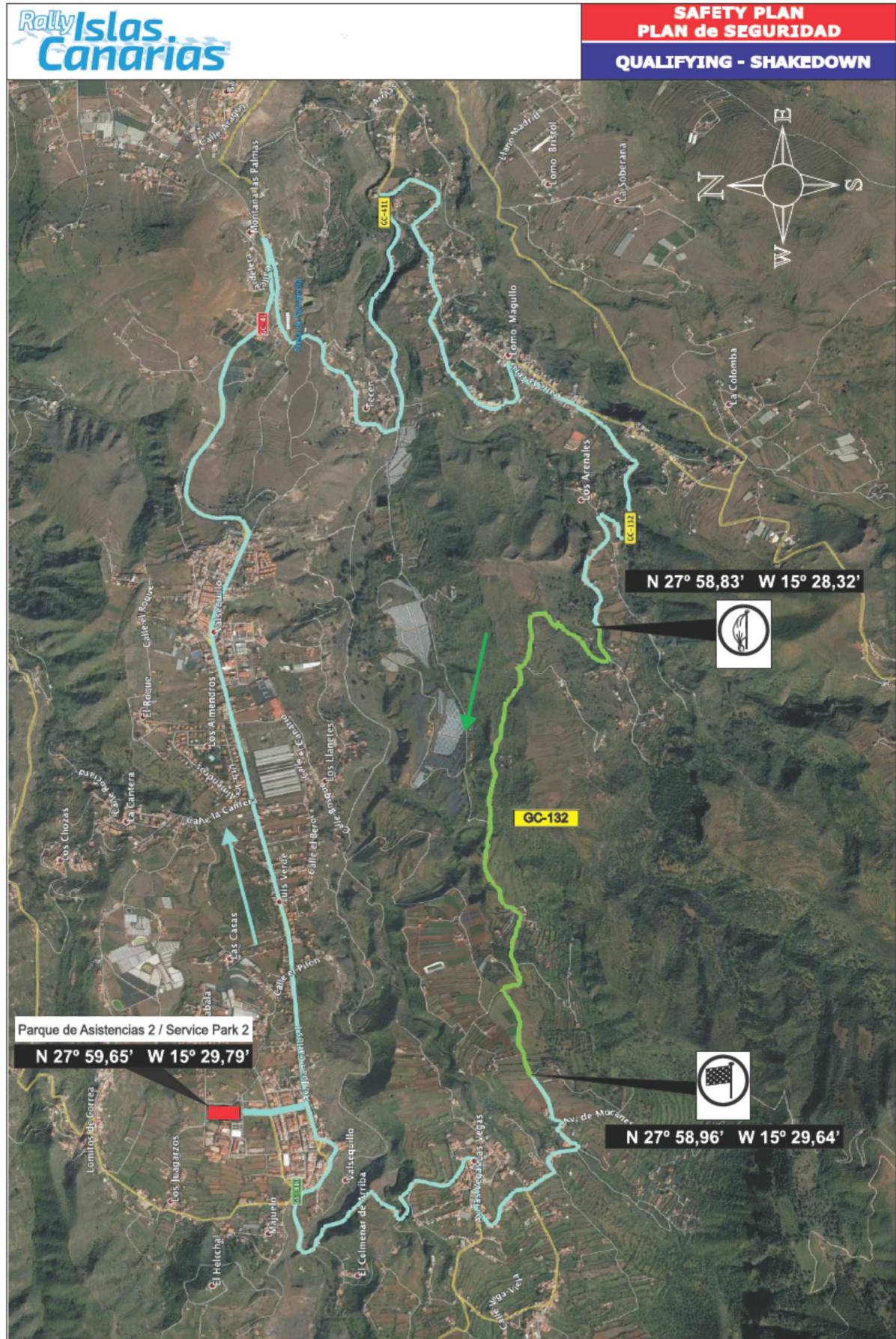


Distance from Service Park (Santa Catalina) to SP 2: 29,16kms

Distance from SP 2 to Qualifying Stage: 11,30kms

Timetable:

09:00-11:00	Free Practice Qualifying Stage	(FIA, ERC & R-GT priority drivers)
11:45-12:45	Qualifying Stage	(FIA, ERC & R-GT priority drivers)





13.1 Shakedown

Day: Thursday 2nd May 2019

Location: Lomo Magullo, Telde. Start: N27°58,83' O15°28,32'

Stage length: 3,25kms

Distance from Service Park (Santa Catalina): 28,94 kms

Remote Service Parks: Valsequillo N27°59,55' O15°29,82'

Distance from Service Park (Santa Catalina) to SP 2: 29,16kms

Distance from SP 2 to Qualifying Stage: 11,30kms

Timetable:

13:30-15:30 Shakedown

Drivers taking part in the Qualifying will not be able to perform the Shakedown

Shakedown Entries:

Non priority drivers who want to participate at the Shakedown should present the application form and a copy of the bank transfer receipt during the administrative checks (Wednesday 1st May 15:00-20:00).

Non registered national teams shakedown fee: 200€.

Crews must wear helmets and competition numbers and rally plates must be affixed.

Please note that any person on board the car during the Shakedown who is not entered for the rally as entrant of the stage, won't be responsibility of the Organisation.

14. Other Procedures

14.1 Ceremonial Start Procedure

The Ceremonial Start will be held at The Santa Catalina Park from 20:30 on Thursday 2 May.

All competitors must be present at the ceremonial start wearing their overalls between 19:30 and 20:00 and follow the instructions of the marshall.

The crews will start in reversed starting order in 1 minute interval (from the highest to the lowest starting numbers). The start order of the Ceremonial Start will be published at 18:30 on Thursday 2 May. (First will start Canary and National Championship, after ERC).

15.2 Procedure for the City Stages (SS7 / SS8)

There are two consecutive City Stages SS7 and SS8, both having the same distance and route.

The Start of SS7 will be at 17:56 and the Start of SS8 at 18:16, so part of the time will be interspersed.

According to Itinerary, before the SS7 there will be a Regrouping for the Start, all teams must follow the instructions of the Marshals.

The Start of both Stages, will be by group session of 30 cars in the following order:

- 1st group of SS7
- Same group of SS8
- 2nd group of SS7
- Same group of SS8
- 3rd group.....

The start order of all groups will be the same as the order of entry of the regrouping (TC-6A).

The start interval for each group will be the first 10 at 1 minute and the rest at 30 seconds.

For the TC-8, the car that start in the second 30 (HH:MM:30) of the SS-7, the ideal minute of presentation to the time control will be from between HH:MM:30 to HH:MM:29.

The Clerk of the Course may change the number of cars, start intervals, or start order of each group.

Crews are obliged to follow the instructions of the control's marshals.

Failure to respect these indications may entail a penalty at the discretion of the Stewards of the Meeting.

15.3 Roundabouts SS2/5, SS7/8 and SS10/14.

The roundabouts must be negotiated as shown in the Road Book. A penalty of 30 seconds will be applied to competitors who fail to follow this indicated route.

15.4 Starting system of special stages

On the special stages the start will be given by an electronic system of count down. The count down will be discounted second by second and will be clearly visible by the crew from the starting position.

A photocell placed 40 cm in front of the starting line will be used to detect jump starts.

Should the electronic start system fail the start will be given as specified in art. 37.3 of 2019 FIA Regional Rallies Championships Sporting Regulations.

15.5 Finish procedure

Finish of the rally will be at TC14C (time control before podium). From this point all cars are subject to Parc Fermé rules and have to follow Marshals instructions.

16. PR Activities /Rally Shows

Thursday, 2nd May

17:00 h Selection of Starting Positions (Top 15 priority drivers)	Podium
17:30 h Pre-Event Press Conference & Autograph Session	Podium

20:30 h Ceremonial Start	Podium
------------------------------------	---------------

Saturday, 4th May

18:15 h Prize Giving	Podium
--------------------------------	---------------

19:15 h End-Event Press Conference	Podium
--	---------------

17. Media

17.1 Contact

Edificio Miller
Santa Catalina Park
35007 – Las Palmas de Gran Canaria
(From 1st to 5th May 2019)
Telephone: (+34)
E-mail: prensa@rallyislascanarias.com

17.2 Accreditation procedure / Criteria and Deadline

Application forms for Media Accreditation will be admitted until 12th April 2019.

All incomplete applications, received by fax or sent past the deadline, will be refused.

Each Media can request three accreditations at the most. The Press Office will consider each radio station's necessities separately.

The criteria that allow the applications approval, are detailed in the "documents attached" declaration form (second page of the Application Form for Media Accreditation). The Media reports its commercial nature. The Media should also attach an official letter signed by its chairman, with all details of the journalists who will be accredited and a dossier of published articles about the last Edition of the Rally Islas Canarias in 2018, the ERC and/or Spanish Championships. Besides, they have to send a copy of their Press Identification, and in photojournalism cases, a copy of their license of professional services insurance of the R.F.E.D.A.

17.3 Location and Opening Hours

Media Room

Edificio Miller
Parque Santa Catalina
35007 Las Palmas de Gran Canaria

Tuesday	30 th April:	12:00h – 21:00h
Wednesday	1 st May:	09:00h – 21:00h
Thursday	2 nd May:	09:00h – 23:00h
Friday	3 rd May:	09:00h – 22:00h
Saturday	4 th May:	08:00h – 21:00h

Media Programme

Friday, 12nd April

Deadline for reception of Applications for Media Accreditation

Wednesday, 1st May

09:00 to 21:00 h Accreditation Media Center	Edificio Miller
---	------------------------

Thursday, 2nd May

17:00 h Selection of Starting Positions (Top 15 priority drivers)	Podium
17:30 h Pre-Event Press Conference & Autograph Session	Podium
20:30 h Ceremonial Start	Podium

Saturday, 4th May

18:15 h Prize giving	Podium
19:15 h End-Event Press Conference	Podium

17.4 Teams' Media Contacts

Team name	Name team manager	Contact
NEIKSANS RALLY SPORT	Maris Neiksan	maris@neiksansrallysport.com
OPEL RALLY JUNIOR TEAM	Dominik Vogg	dominik.vogg@holzer-gruppe.com
SPORTS RACING TECHNOLOGIES	Joe Labuckas	joe.labuckas@srt.lv
PEUGEOT RALLY ACADEMY	Vincent Ducher	jeanmarc.vinatier@mpsa.com ; v.ducher@sainteloc.com ; laurent.guyot@mpsa.com

RALLYTECHNOLOGY	Lukasz Wizner	office@rallytechnology.com
CASTROL FORD TEAM TURKIYE	Serdar Bostanci	serdarbostanci@teknikmotorspor.com
SAINTELOC JUNIOR TEAM	Vincent Ducher	v.ducher@sainteloc.com
MOTORSPORT ITALIA	Bruno de Pianti	Bruno.motorsportitalia@gmail.com
TIGER ENERGY DRINK RALLY TEAM	KASPERCZYK Tomasz	tomasz@kasperczyk.pl
RALY / AUTOACOREANA RACING	Gonçalo Mota	mota.goncalo@ftm.pt
ACCR CZECH TEAM	Petr LINHART	pluto.petr@gmail.com
ADAC OPEL RALLY JUNIOR TEAM	Frederic Elsner	frederic.elsner@adac.de
BOTKA TLUSTAK RACING	Szenner Zsolt	szenner.zsolt@gmail.com
GCMotorsport	Roberto Marti	rmarti@motorenlinea.es
LOTOS RALLY TEAM	Wojciech Paterek	biuro@kajto.pl

17.5 Expected Media Coverage

National media as Marca and AS sports newspapers, Canal Plus with their show 'De Rally', and TVE via their specialized channel Teledeporte, will broadcast the Rally. Televisión Canaria will offer an special coverage. On the other hand, the Spanish magazines Auto Hebdo Sport and Autopista will be following the race.

All regional specialized media will be covering the event, specially MotorEnLinea.es, MotorADiario.com and Motor2000.net, Motoraldia7.com, Motoractualidad.com, Atodomotor.com.

La Provincia, Canarias 7, La Opinión de Tenerife, El Día and El Diario de Avisos, among others, will also follow closely the race.

18. Passes and Plates

TBA

19. Medical and Safety Service

19.1 Emergency Numbers

Emergency Number

112

Hospitals in the area

HOSPITAL UNIVERSITARIO INSULAR DE GRAN CANARIA
C/ Córdoba

35016 – Las Palmas de Gran Canaria
(+34) 928 444 500 – (+34) 928 444 330

HOSPITAL UNIVERSITARIO MATERNO-INFANTIL

C/ Córdoba

35016 – Las Palmas de Gran Canaria
(+34) 928 444 500 – (+34) 928 444 803

COMPLEJO HOSPITALARIO DOCTOR NEGRÍN

Barranco de La Ballena

35010 – Las Palmas de Gran Canaria
(+34) 928 450 000

CLÍNICA NUESTRA SEÑORA DEL PERPETUO SOCORRO

C/ León y Castillo, 407

35007 – Las Palmas de Gran Canaria
(+34) 928 499 900

CLÍNICA SAN ROQUE

C/ Alcalde Francisco Hernández González, 10

35001 – Las Palmas de Gran Canaria
(+34) 928 012 600

HOSPITAL SANTA CATALINA

C/ León y Castillo, 292

35007 – Las Palmas de Gran Canaria
(+34) 928 297 151

HOSPITAL POLICLÍNICO LA PALOMA

C/ Maestro Valle, 20

35005 – Las Palmas de Gran Canaria
(+34) 928 234 637

HOSPITAL SAN ROQUE MASPALOMAS

C/ Mar de Siberia 1

35100 – Meloneras
San Bartolomé de Tirajana
(+34) 928 063 600

Police

POLICÍA LOCAL (CITY POLICE)

C/ Eufemiano Fuentes Cabrera, 3

35014 – Las Palmas de Gran Canaria
(+34) 928 26 05 51

POLICÍA NACIONAL (NATIONAL POLICE FORCE)

Comisaría Zona Puerto

Plaza Manuel Becerra, 62

35008 – Las Palmas de Gran Canaria
(+34) 928 471 414

CUARTEL DE LA GUARDIA CIVIL

C/ Alicante, 9
35016 – Las Palmas de Gran Canaria
(+34) 928 320 400

JEFATURA PROVINCIAL DE TRÁFICO

Fines and General Information
Plaza Derechos Humanos, 2
35003 – Las Palmas de Gran Canaria
(+34) 928 381 818

Towing Service

For towing services, please contact to:

OCTAVIO BREAKDOWN VAN SERVICE

Telephone: (+34) 650 52 14 14

IVÁN BREAKDOWN VAN SERVICE

Telephone: (+34) 629 139 878

Pharmacies

Pharmacies nearby HQ Rally and Service Park

Farmacia Blanco Roca, J.

C/ Luis Morote, 5
35007 – Las Palmas de Gran Canaria
(+34) 928 262 812

Farmacia Sanz Bozal, J.

C/ General Vives, 80
35007 – Las Palmas de Gran Canaria
(+34) 928264452

Farmacia Laura Cárdenes

C/ Tomas Miller, 75
35007 – Las Palmas de Gran Canaria
(+34) 928272 774

Farmacia Ldas. Navarro y Cárdenes

C/ Juan Manuel Durán González, 18
35007 – Las Palmas de Gran Canaria
(+34) 928 263 109

Farmacia María Paz de Zárate

C/ León y Castillo, 393
35007 – Las Palmas de Gran Canaria
(+34) 928 270 168

Farmacia Pedro Manrique de Lara

C/ Nicolás Esteváñez, 41

35007 – Las Palmas de Gran Canaria
(+34) 928 261 407

Farmacia Pérez Cabani, V.
C/ Dr. Grau Bassas, 3
35007 – Las Palmas de Gran Canaria
(+34) 928 227 608

For information about duty pharmacies (24 hours service):
<http://www.coflp.org/guardias.php>

20. Information about Gran Canaria

Climate in Gran Canaria

The Gran Canaria's Climate is characterized by an average annual temperature between 18 and 25°C, with an estimated annual rate of 2.700 hours of sunlight, and a fresh and humid wind, coming from the Azores' Anticyclone, the trade winds.

Due to the unusual relief of the island there can be found a great variety of microclimates. On the southern slopes of the island, in coastal areas, the climate is dry and sunny almost all year round. In areas of higher altitude, the influence of the sea is reduced and the clouds are detained by the mountains; that produces great variations of temperature from the temperature of Midlands or valleys and subtropical forests to the highest areas, where the temperature can reach 0° C. This allows people to enjoy completely contrasted climates in two different areas of the island.

Time Zone

Time zone in Spain is UTC +0 (Universal Time Coordinated) CET -1(Central European Time). During rally period is Wintertime which is GMT +0

Sunrise / Sunset

Friday 3 rd May	Sunrise: 07:21h	/	Sunset: 20:38h
Saturday 4 th May	Sunrise: 07:21h	/	Sunset: 20:38h

Currency

Euro

22. List of useful Facts and Services

Restaurant

Arte Gaia

Plaza de San Matías, 2. Artenara.

660 150 487

Travel agency

Viajes Insular.

C/ Pintor Juan Guillermo, 10

Sales

928 495 238 laminilla@viajesinsular.es

Department of groups

gruposemisorgc@viajesinsular.es

Hire Car Companies

For rent-a-car services, please contact to:

CICAR

C/ 29 de Abril, 47

35007 – Las Palmas de Gran Canaria

Telephone: (+34) 928 277 213

Fax: (+34) 928 277 534

Website: <http://www.cicar.com>

Private Bus and Luxury Car Services

GRAN TURISMO 7 ISLAS

Telephone (+34) 928 155 265 ó (+34) 634 755 265

Website: <http://www.granturismo7islas.com>

Taxis

JOSE PÉREZ (TAXI DRIVER)

Tel: (+34) 608 241 246

e-mail: joseperezsuarez@hotmail.com

RADIO TAXI TARAGRANCA

Tel: (+34) 928 460 000

Website: <http://www.taragranca.org/>

Hostess

e-mail: modelsqc@hotmail.com Mercedes Rivero

e-mail: agenciaguaposlp@gmail.com Aarón Castellano

e-mail: info@agenciadiamonds.com www.agenciadiamonds.com

Airport and Airlines

GRAN CANARIA AIRPORT

Autopista GC-1

35230 Telde

Tel: (+34) 902404704

E-mail: lpainfo@aena.es

Website: www.aena-aeropuertos.es/csee/Satellite/Aeropuerto-Gran-Canaria

A

AerLingus

www.aerlingus.com

Air Berlin

www.airberlin.com

Air Europa

www.aireuropa.com

Air Mediterranee

www.air-mediterranee.fr

Air Nostrum Líneas Aéreas del
Mediterráneo

www.airnostrum.es

Arkefly

www.arkefly.nl

Austrian Airlines

www.austrian.com

B

Bh Air

www.bhairsines.com

Binter Canarias

www.bintercanarias.com

British Airways

www.britishairways.com

Brussels Airlines

www.brusselsairlines.com

C

Cabo Verde Airlines

www.flytacv.com

Canary Fly

www.canaryfly.es

Ceiba Internacional

www.fly-ceiba.com

Condor

www.condor.com

Corendon Airlines

www.corendon.com/en-EN

E

Easy Jet

www.easyjet.com

Edelweiss Air

www.edelweissair.ch

Enter Air

www.enterair.pl

Eurowings

www.germanwings.com

Evelop

www.evelop.com

F

Finnair

www.finnair.com

Fly 365 Aviation

www.fly365.co

G

Germania

www.flygermania.de

Germanwings

www.germanwings.com

H

Helvetic Airways

www.helvetic.com

I

Iberia Express

www.iberiaexpress.com

Iberia

www.iberia.com

Icelandair

www.icelandair.es

J

Jet2.com

www.jet2.com

Jet Time

www.jet-time.dk

Jetairfly

www.jetairfly.com

L

Lufthansa

www.lufthansa.com

Luxair

www.luxair.lu

M

Mauritania Airlines

www.mai.mr

Mistral Air

www.mistralair.it

Monarch Airlines

www.monarch.co.uk

N

Naysa

www.naysa.es

Neos

www.neosair.it

Niki Luftfahrt GmbH

www.flyniki.com

Norwegian Air

www.norwegian.no

Novair

www.novair.net

P

Primera Air Scandinavian

www.primeraair.com

R

Royal Air Maroc

www.royalairmaroc.com

Ryanair

www.ryanair.com

S

SAS Scandinavian Airlines

www.flysas.com

Sata International

www.sata.pt

Serair Transworld Press

www.serair.com



Small Planet
www.smallplanet.aero

SmartWings
www.smartwings.net

Sun Express
www.sunexpress.com

T

TUI Airlines Nederland
www.tuifly.nl

Thomas Cook Belgium
www.thomascookairlines.be

Thomas Cook Airlines
www.thomascook.com

Thomas Cook Scandinavia
www.thomascook.se

Thomson Airways
www.thomson.co.uk

Transavia.com
www.transavia.com

Tuifly
www.tuifly.com

Tuifly Nordic
www.tuiflynordic.se

V

Volotea
www.volotea.com

Vueling
www.vueling.com

Copy Service

Copy Service nearby HQ Rally and Service Park

COPY RIVER S.L.
C/ Nicolás Estévez, 19
35007 Las Palmas de Gran Canaria
Tel: (+34) 928 229 671

Telephone Services

EL CORTE INGLÉS
Avda. José Mesa y López, 15 -1stFloor
35007 Las Palmas de Gran Canaria

Private Security

For private security services, please contact to:

SECURITY DEPARTMENT
SINERGIAS DE VIGILANCIA Y SEGURIDAD
E-mail: info@svsseguridad.com
Website: [http:// www.svsseguridad.com](http://www.svsseguridad.com)