



Revised 14th April 2022
Updated fuel order details

WRC SAFARI RALLY KENYA

THE GREAT KENYAN EXPERIENCE IN AFRICA

2022
SAFARI RALLY KENYA

Rally Guide 1



SIGN UP | SAVE LIVES | STAY SAFE

<p>BUCKLE UP</p> <p>FERNANDO ALONSO FIVE-TIME F1 WORLD CHAMPION</p> 	<p>USE A CHILD SAFETY SEAT</p> <p>MICHELLE YEOH SINGAPORE, FORMERLY CHINA AND AUSTRALIAN FORMULA 1 DRIVER</p> 	<p>NEVER DRINK AND DRIVE</p> <p>NICO ROSBERG AND TWO-TIME F1 WORLD CHAMPION</p> 	<p>SLOW DOWN FOR KIDS</p> <p>PATRICK DEMPSKY AS TWO-TIME F1 FORMULA 1 AND FORMERLY F1 DRIVER</p> 
<p>CHECK YOUR TYRES</p> <p>RAFAEL MARTEL F1 FORMULA 1 DRIVER FORMERLY FORMULA 1 AND F1 DRIVER</p> 	<p>OBEY THE SPEED LIMIT</p> <p>YOHANN BLANDE F1 FORMULA 1 DRIVER FORMERLY FORMULA 1 AND F1 DRIVER</p> 	<p>DON'T TEXT AND DRIVE</p> <p>PHILIPPE WILLIAMS FORMERLY FORMULA 1 AND F1 DRIVER</p> 	<p>LOOK BEFORE CROSSING</p> <p>FELIPE MASSA F1 FORMULA 1 DRIVER FORMERLY FORMULA 1 AND F1 DRIVER</p> 
<p>STOP WHEN YOU'RE TIRED</p> <p>ANTHONY GROSCHMANN FORMERLY FORMULA 1 AND F1 DRIVER</p> 	<p>MAKE ROAD SAFETY A PRIORITY</p> <p>ANNE HEALDO FORMERLY FORMULA 1 AND F1 DRIVER</p> 	<p>ALWAYS PAY ATTENTION</p> <p>WENDY LOW FORMERLY FORMULA 1 AND F1 DRIVER</p> 	<p>STAY BRIGHT</p> <p>HARVEY GOSSELASSE FORMERLY FORMULA 1 AND F1 DRIVER</p> 
<p>CHECK YOUR VISION</p> <p>MICHAEL FASSBENDER</p> 	<p>DON'T LET YOUR FRIENDS DRIVE DRUNK</p> <p>WIMPE VAN MEERHE FORMERLY FORMULA 1 AND F1 DRIVER</p> 	<p>WEAR A HELMET</p> <p>MARC MARQUEZ FORMERLY FORMULA 1 AND F1 DRIVER</p> 	

SUPPORT THE FIA'S MANIFESTO
FOR GLOBAL ROAD SAFETY AT **FIA.COM**

#3500LIVES



Content

1.0	Introduction	4	5.12	Power	30
1.1	Welcome Note from the Organisers	4	6.0	Two-Way Radio	30
1.2	The 2022 Event in Brief	10	7.0	Fuel and Refuelling	31
1.3	Route changes 2022 / 2021	15	7.1	Fuel and Refuelling	31
1.4	Past Winners	17	7.2	Tyres	31
2.0	Contact Details	18	8.0	Import of Vehicles and Spare Parts	31
2.1	Permanent contact details (Permanent Secretariat)	18	8.1	Customs Clearance	32
2.2	Key Officials	19	8.2	Inland Logistics Procedure	35
2.3	Rally Contact Details	20	8.3	Passengers Arriving in Kenya	35
2.4	Media Contact Details	20	8.4	Payments	36
3.0	Programme and Critical Deadlines	21	8.5	Visas	36
3.1	Schedule Before the Rally Week	21	9.0	Helicopters	36
3.2	Schedule During the Rally Week	22	9.1	Helicopter Registration	37
4.0	Entry Details	24	9.2	Helicopter Charter Companies	37
4.1	Entry Procedure	24	10	Hospitality Arrangements	38
4.2	Titles for Which the Rally Counts	24	11	Hotel / Accommodation Reservation	38
4.3	Criteria for Acceptance of Entry	24	12	Reconnaissance	38
4.4	Entry Fees	25	12.1	Duration and Schedule	38
4.5	Entry Package for Non FIA Registered Teams	26	12.2	Registration	38
5.0	Service Park	27	12.3	Reconnaissance Procedure	39
5.1	Service Park Location	27	13	Srutineering, Sealing and Marking	39
5.2	Service Area	28	14	Shakedown	39
5.3	Access to Service Park	28	14.1	Shakedown Location	39
5.4	Faciities	28	15	Media	40
5.5	Security and Medical Services	29	15.1	Contacts Before the Rally	40
5.6	Promotional Stands	29	15.2	National Publications, National Photographers, National Websites and National Radio Stations	40
5.7	Traffic Movements	29	15.3	Media Reconnaissance	42
5.8	Environmental Requirements	30	16	Medical & Safety Services	42
5.9	Service Park Manager	30	16.1	Hospitals	43
5.10	Recovery of Retired Cars	30	17	List of Useful Facts and Services	43
5.11	Retirements and Re-starts	30			

"This document has no regulatory power – for information only"

1 Introduction

1.1 Welcome Note from the Organisers



MINISTRY OF SPORTS, CULTURE, AND HERITAGE STATEMENT BY AMB. (DR.) AMINA MOHAMED, EGH, CAV, CABINET SECRETARY, MINISTRY OF SPORTS, CULTURE, AND HERITAGE

On January 23, 2022, Kenya signed an extension agreement with the Fédération Internationale de l'Automobile (FIA) and the World Rally Championship granting us the right to host the WRC Safari Rally until December 2023, having lost the first year of our previous agreement (2020) to COVID-19 pandemic.

The second amendment, signed on the same day, further extended the hosting of the competition in Kenya until December 2026.

These extensions signify the confidence that FIA and WRC have in Kenya's ability to host a world-class event and speaks of our close partnership that has seen the growth of motorsports in Kenya, especially among women and the youth.

The Safari Rally is one of the flagship projects of His Excellency Uhuru Kenyatta, the President of the Republic of Kenya, who played a key role in its return in 2021, after a 19-year hiatus; a promise that he pledged in 2013, and kept.

Thanks to His Excellency, the government has reaffirmed its commitment to the WRC circuit and promises to fund the project in Kenya for the next five (5) years and beyond.

In keeping with Kenya's intent to lead and deliver on the Sustainable Development Goals (SDGs), we have developed two (2) legacy projects to secure environmental

sustainability and improve the conditions of our host institutions and host Counties.

These legacy projects are anchored on two themes:

environmental conservation and **action for road safety**.

The **environmental conservation project** targets Kenya's wetlands affected by climate change, deforestation, Safari Rally and Kenya Motor Sports Federation routes, the service park and the spectator stage at the Moi International Sports Centre, Kasarani, with a target of planting 18 million trees in three years. Already we are approaching the 3 million mark thanks to our dedication to combating the adverse effects of climate change and especially deforestation.

We are also working with FIA on the **Action for Road Safety Program**, launched in support of the UN Decade of Action for Road Safety with a focus on Road Safety and Motoring Education. This program will bolster the safety prerogatives put in place by the Safari Safety, Security and Medical teams.

Additionally, we have opened a rally office in Finland to coordinate the WRC Safari Rally activities with potential competitors, teams, and sponsors in Europe and promote Kenyan's quality coffee.

Safari Rally is at the heart of our national heritage and as a government, we would like to welcome you all to this year's competition, TO BE HELD IN Naivasha. This will be a great opportunity for you to witness this spectacular event and experience the unique Kenyan culture.

Karibuni Kenya!



The long overdue resumption of the WRC, Safari Rally to Kenya was a great honour for the country which is globally recognized as a sports powerhouse.

The hugely successful event gained all round accolades as one of the best in recent times and most challenging, thanks to the breathtaking terrains of the Kenyan Great Rift.

The tremendous success of last year's event which was held under difficult challenges occasioned by the Covid-19 Pandemic, could not have been possible without the support of the entire Government of Kenya led by H.E the President who has since reassured us of his unwavering support for the Safari Rally.

The extension of the WRC Safari Rally all through to 2026 offers the country a massive opportunity to improve the experience for both spectators and the competitors.

We learnt invaluable lessons from last year's event, which will undoubtedly help us showcase much more improved successive events beginning with this year's edition.

The State Department for Sports strongly affirm our commitment to support the WRC so as to give our guests even more spectacular future Safari Rally experiences.

We remain grateful to the FIA for their reassuring trust in our ability to host such a big event. We equally appreciate the local WRC Committee for the hard work they put in everyday to the project, including developing a long-term masterplan for the Safari Rally.

With that said, we look forward to welcoming you once again to Kenya's WRC Safari Rally.

Karibuni.
Joe Okudo, CBS
Principal Secretary,
State Department for Sports



The 2022 WRC Safari Rally will be a show like no other in the Southern Hemisphere as we pray that Covid-19 Pandemic will not affect our time table in the lead up to the June 23-26 Safari Rally.

So far everything is on schedule with our goal being to deliver a world class event to match if not surpass the many records the WRC Safari set last year.

It was heart- warming to once again get a nod from the WRC Promoter to extend the Event Promotion Agreement for the next five years for various reasons after 19 years. Most significantly for the commercial success of the Safari as a media driven sporting event.

I am proud to share several insights achieved in the 2021 WRC Safari which emerged as one of the most watched WRC rounds in the championship's history. The Safari performed exceptionally well on all social media platforms, linear TV and in major traditional media outlets.

Returning the Safari rally back to the WRC Series, Kenya achieved several goals regaining long held heritage started way back in 1953.

Showcasing our flora and fauna which roam the African Savannah to spice up the WRC series as a new refreshing attraction.

I am proud to announce that these and other goals are our target now and in the future.

We achieved all this with the stead-fast support of our **Patron H.E Uhuru Kenyatta**.

The Ministry of Sports, Culture & Heritage leadership, several government agencies, the steering and organizing committees and the secretariat, volunteers, participants and above all the ever faithful Kenyan fans.

I wish to welcome the world to Kenya and Africa to enjoy the WRC Safari Rally Kenya that will held on 23rd-27th June 2022.

PHINEAS KIMATHI
CHIEF EXECUTIVE OFFICER
WRC SAFARI RALLY KENYA



THE SAFARI RALLY HISTORY

The Safari Rally was first held in 1953, as the East African Coronation Safari in Kenya, Uganda and Tanganyika, as a celebration of the coronation of Queen Elizabeth II.

In 1960 it was renamed the East African Safari Rally and kept that name until 1974, when it became the Kenya Safari Rally. Widely regarded as one of the most popular African rallies. It made its return to the World Rally Championship (WRC) in 2021 after a 19-year hiatus.

The older version of the Safari Rally was notorious for being the most difficult rally in the World championship. Some had said that winning this particular rally was the equivalent of winning three other rallies.

The arduous conditions, such as the constantly changing weather and the very rough roads often made life very difficult for team personnel. Repairs were constantly having to be made to the cars, which added to the elapsed time of the competitors. Frequently, all this work had to be done in intense heat and humidity. The event adopted the special stage format in 1996.

From that edition until 2002, it featured over 1000 km of timed stages, with stages well over 60 kilometers long, unlike most rallies which had under 500 kilometers of total timed distance.

The event exited from the WRC calendar in 2003. Since 2003 the event has been part of the FIA African Rally Championship, organized by Kenya Motorsports Federation.

The 2021 rally ran successfully between 23rd and 27th June, earning it's rightful place back amongst the greatest WRC events in the world. The world was intrigued as to how Safari Rally could fit into a modern WRC. Central service, modern cars etc. Words used to describe the event by legends; "Bellissima!" Tiziano Siviero & Miki Biasion

The 2022 Safari Rally Location: Naivasha



The original name of Naivasha is drawn from the Maasai dialect, “Nai Posha,” which means “Rough Water.” It was used to refer to the frequent storms that would frequent Lake Naivasha. Naivasha is 95 kilometers west of Nairobi and is accessible by road. Recently, the standard gauge railway (SGR) was extended from Nairobi to Naivasha. With the Kenya Ports Authority having recently set up an Inland Container Depot in Naivasha, it means cargo can now be transported by rail from the port of Mombasa all the way to Naivasha. By 2030 Kenya aims to have 5,530 MW of geothermal power or 51% of total capacity. This will make it Kenya’s largest source of clean electricity. Kenya is the leading producer of geothermal energy on the African continent and 8th in the world. The Nation has helped set a valuable precedent for building green infrastructure and implementing sustainable poverty-reduction efforts. Kenya is a holiday destination for many reasons. There are tourists who come to Kenya for the sunny beaches, for the culture and others for our wildlife.

Kenya is home to the big five and it would be such a sad story for one to come to Kenya and not take time to go see them. It is even a sadder state of affairs if you are Kenyan and have never taken time to go see what others travel air-miles to see.

1.2 The 2022 Event in Brief

The event will take place in the Great Rift Valley, around Lake Naivasha & Elmenteita with the Service Park being at the Kenya Wildlife Services (KWS), Naivasha on the main Nairobi to Nakuru Road. Administrative checks will begin on Sunday 19 June in Naivasha and reconnaissance will start on Monday 20 June from 0700hrs. Reconnaissance will continue until Tuesday 21 June



Wednesday 22 June

Shakedown, Ndulele- 5.41km @1001hrs

The Ndulele Conservancy off the Moi North Lake road will be the venue for the Shakedown from 1001hrs. The challenging 5.4kms of Kenyan rally tracks will see the first action of a WRC Rally1 car, in all its raw glory. The first time the latest Hybrid-equipped Rally1 car will set foot on the African continent. Undulating tracks with varying surfaces through a wooded landscape will allow the crews to sample in minor what will be the 2022 WRC Safari Rally and their first feel of the spectacular challenge ahead.

Thursday 23 June 2022 (Section 1) SS1 Super Special Kasarani- 4.84km @1408hrs

Reconnaissance of the Kasarani Spectator Stage (SS1), by the drivers in their WRC Rally1 cars from 07.30hrs. Then to Kenyatta International Convention Centre – 1100hrs press conference followed by the Ceremonial Start at 1246hrs. The WRC Safari Rally returns to it's traditional start, in the heart of the capital city, Nairobi. From 1408, the first 2 cars will tackle the Super Special at Kasarani

Friday 24 June 2022 (Section 2/3)



SS2/5 Loldia 1 & 2- 19.17kms

@0800hrs & 1314hrs

The special stage takes place throughout a wooded forest, with tracks that can be very narrow to flat out sections, reminiscent of Safari of past days. The forest makes it feel very different to all the other special stages.

SS3/6 Geothermal– 11.68kms

@0918hrs & 1432hrs

Starting at a lower point with hard compacted surfaces the route passes community land bomas, schools and probably the largest football field on the continent to then ascend over craggy rock lined hills to what is one of the higher points on the complex of hills that make up parts of Hells Gate and the Ol Karia geothermal area.

The 12km route dips, skirts and flows over hills and valleys that could well be part of a major Hollywood production. Stunning backdrop vistas with the constant plumes of geothermal vents set off against a bright Kenyan sky all combine to present an unforgettable image of SS Geothermal, the newest addition to the 2022 event.

SS4/7 Kedong– 31.25kms

@1011hrs & 1525hrs

A firm favorite of the passionate Rally fans in East Africa also gets a bit of treatment in the way of rerouting 2 sections of the 2021 route to avoid some irreparable rain damage, deepening dust pans and an area or two with slight safety concerns. With thankfully no reduction in the overall stage distance the reroute works perfectly! Competitive challenge enhanced for 2022

Saturday 25 June 2022 (Section 4/5)



SS8/11 Soysambu– 29.32kms

@0811hrs & 1414hrs

This stage is now almost 12 km longer than in 2021 and will take in some interesting features along the 29km route, to include a compact spectator area near the start, rocky climbs, tricky fast runs, and the familiar sweeping sections before the two river crossings which lead to the finish of the stage in the same location as 2021.

The liaison section from the Service Park to Soysambu has been changed this year to avoid traffic snarl ups as witnessed in 2021.

SS9/12 Elmenteita- 15.08kms (Live TV)

@0908hrs & 1508hrs

With its naturally beautiful Lake Elmenteita as a unique backdrop, SS9/12 will serve as the Live TV Stage on Saturday. The 15km stage will be run in an opposite direction to 2021 - to accommodate the need to allow Live TV crews the opportunity to capture the action in all its picturesque glory. Running as the days second and fifth stage - Elmenteita will no doubt present iconic imagery with its grey volcanic dust, lush lakeside vegetation and the promise of a clear blue sky reflected on the Lake surface dotted with flocks of pink Flamingos.

SS10/13 Sleeping Warrior- 23.05kms

@1006hrs & 1606hrs

In the shadow of a hill that resembles a sleeping Maasai warrior, the special stage crisscrosses the natural plains before a rocky finish. The Stage will start after a Remote Refuel zone located adjacent to the Elmenteita crossroads, to wind its way through the challenging rockery that provided some incredible images in 2021. Skirting the Sleeping Warrior Hill over the fast, flowing 23km through acacias and cattle grazing fields around the numerous hills, the stage will terminate just past the power pylons where the 2021 Stage finished.



FIA SPECTATORS' GREEN GUIDE

RESPECT YOUR SURROUNDINGS

BE AWARE OF YOUR ACTIONS

SAVE WATER

USE PUBLIC TRANSPORT

ORGANISE CAR POOL

DRIVE ECO FRIENDLY

GO PAPERLESS

BUY GREEN

LEAD THE WAY

LOVE YOUR SPORT

Sunday 26 June 2022 (Section 6/7/8)



SS14/17 Oserian-17.81kms

@0705hrs & 11:29hrs

Set within the exclusive Oseregoni Sanctuary, this is one of the more exciting stages. Host to a lot of incidental spectators ranging from Antelopes to Zebras and everything in-between. The Stage consists of varying flora and fauna, indigenous to the area with continual changes of surface as the elevation changes.

SS15/18 Narasha- 21.47kms

@0812hrs & 12:36hrs

An interesting loop of 20 km that will start and finish within 4 km of the Narasha gate - flowing as it were from the arid floor of the Rift Valley to the Maasai grazing lands skirting Ol Karia and the Hell's Gate National Park. Safari Rally stages of old come to mind as you tackle the changing road conditions & elevations while traversing historic Maasai lands and a trading center called Inkoirienito village.

SS16/19 Hells- 10.53kms

@0908hrs & 1418hrs Wolf Power Stage

With perhaps the most scenic backdrop of any of the Power Stages on the World Rally Championship, Hells Gate is going to sign off Safari Rally on a high. With the finish line of the final stage alongside the picturesque Fisher's Tower. A great opportunity for spectators to get close to the action of the final day and Power Stage

1.3 Route changes 2022 / 2021

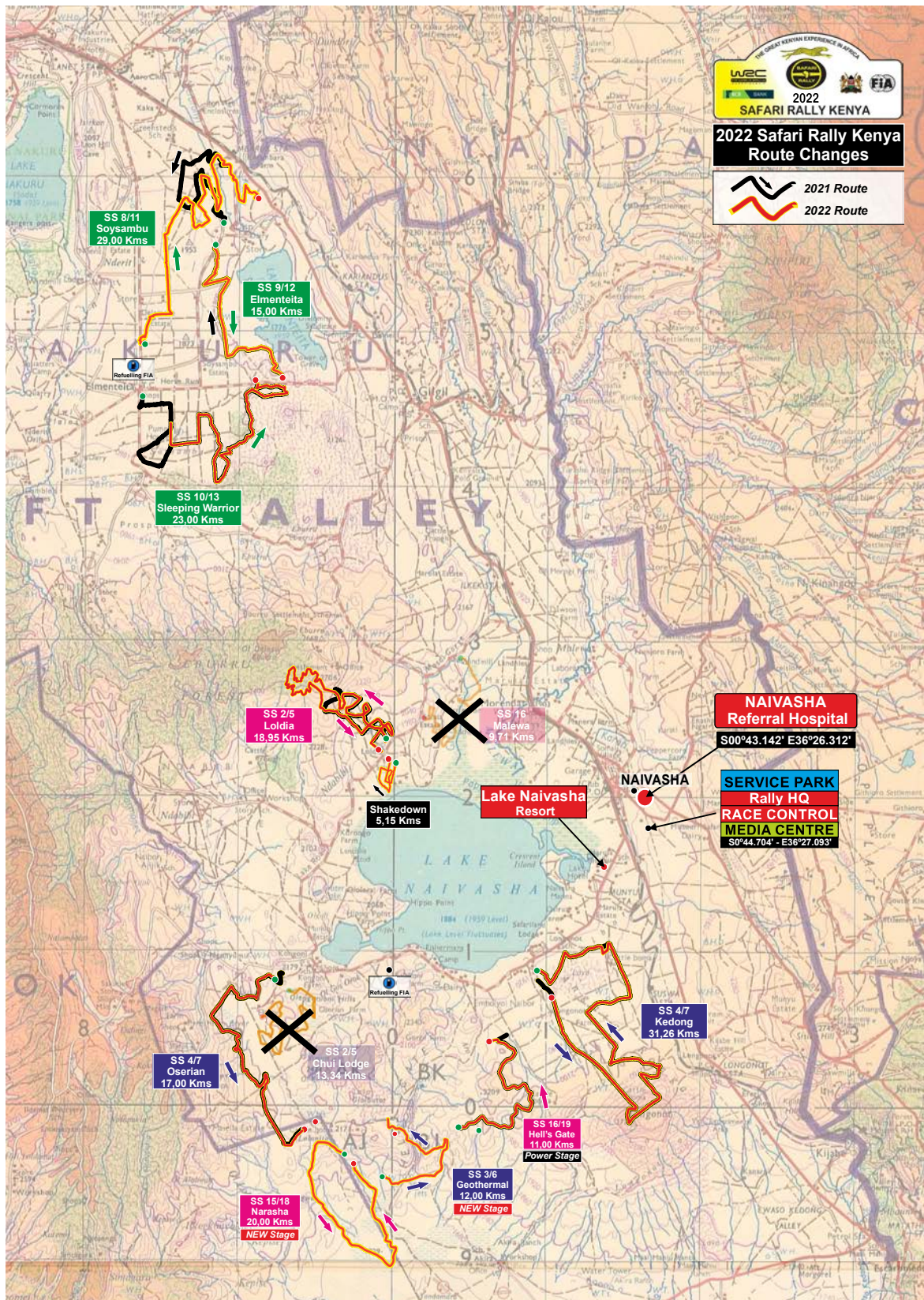
Route Changes 2022 / 2021							
Special Stages		SS			2022 / 2021		
		Nr	Length	Total	Similar	Opposite	New
Wednesday 22 June 2022							
Shakedown	Loldia		5.41		5.41		
Thursday 23 June 2022							
SS1	SS Kasarani	1	4.84	4.84	4.84		
Friday 24 June 2022							
SS 2 / 5	Loldia	2	19.17	38.34	11.95		7
SS 3 / 6	Geothermal	2	11.68	23.36	12		12
SS 4 / 7	Kedong	2	31.26	62.52	28.26		3
Saturday 25 June 2022							
SS 8 / 11	Soysambu	2	29.32	58.64	18		11
SS 9 / 12	Elmenteita	2	15.08	30.16		15	
SS 10 / 13	Sleeping Warrior	2	23.05	46.1	23		
Sunday 26 June 2022							
SS 14 / 17	Oserian	2	17.81	35.62	17		
SS 15 / 18	Narasha	2	21.47	42.94			20
SS 16 / 19	Hells Gate	2	10.53	21.06	10		0.53
Totals		19	184.21	363.58	125.05	15	53.53

WRC Safari Rally
Moi International Sports Centre,
Kasarani Thika Road,
Nairobi, Kenya.
Telephone:
+254 710 692 777
+254 710 694 441
Email: info@safarirally.co.ke

S1°13'49.51" E36°53'36.42"

Website: www.safarirally.co.ke
Facebook: www.facebook.com
Twitter: [#WRCsafarirallyKE](https://twitter.com/WRCsafarirallyKE)

Route changes 2022 / 2021



SAFARI RALLY PAST WINNERS



Bert Shankland, 1966, '67 Joginder Singh, 1965, '74, '76 Hannu Mikkola, 1972

1953:	1st Coronation Safari Rally,	Allan Dix/Johnny Larsen (KEN)	Volkswagen Beetle
1954:	2nd Coronation Safari Rally,	DP Marwaha/Vic Preston Snr (KEN)	Volkswagen Beetle
1955:	3rd Coronation Safari Rally,	Vic Preston Snr/DP Marwaha (KEN)	Ford Zephyr
1956:	4th Coronation Safari Rally,	Erick Cecil/Tony Vickers (KEN)	DKW
1957:	5th Coronation Safari Rally,	Gus Hofmann/Arthur Burton (KEN)	DKW
1958:	6th Coronation Safari Rally,	T. Brooke/Peter Hughes (KEN)	Ford Anglia 100E Impala Class
		- Arne Kopperund/ Kora Kopperund (KEN)	Ford Zephyr II Lion Class
		- Morris Temple-Boreham/ Mike Armstrong (KEN)	Auto Union 100 Leopard Class
1959:	7th Coronation Safari Rally,	Bill Fritschy/Jack Ellis (KEN)	Mercedes Benz 219
1960:	8th East African Safari Rally,	Bill Fritschy/Jack Ellis (KEN)	Mercedes Benz 219
1961:	9th East African Safari Rally,	John Manassis/Bill Coleridge/David Bekett (KEN)	Mercedes Benz-220 SE
1962:	10th East African Safari Rally,	Tommy Fjastad/Bernhard Schimder (KEN)	Volkswagen 1200
1963:	11th East Africa Safari Rally,	Nick Nowicki/Paddy Cliff (KEN)	Peugeot 404
1964:	12th East African Safari Rally,	Peter Hughes/Bill Young (KEN)	Ford Cortina GT
1965:	13th East African Safari Rally,	Joginder Singh/Vaswant Singh (KEN)	Volvo PV 544
1966:	14th East African Safari Rally,	Bert Shankland/Chris Rothwell (TZ)	Peugeot 404
1967:	15th East African Safari Rally,	Bert Shankland/Chris Rothwell (TZ)	Peugeot 404
1968:	16th East African Safari Rally,	Nick Nowicki/Paddy Cliff (KEN)	Peugeot 404
1969:	17th East African Safari Rally,	Robin Hillyar/Jock Aird (KEN)	Ford Taurus 20M RS
1970:	18th East African Safari Rally,	Edgar Herrmann (KEN) Hans Schuller (Germany)	Datsun 1600
1971:	19th East African Safari Rally,	Edgar Herrmann (KEN) Hans Schuller (Germany)	Datsun 240V
1972:	20th East African Safari Rally	(30 Mar - 3 Apr) Hannu Mikkola (FIN)/Gunnar Palm (SWE)	Ford Escort RS 1600 1MC)
1973:	21st East African Safari Rally,	(19-23 Apr) Shekhar Mehta/Lofly Drews (KEN)	Datsun 240Z
WRC1974:	22nd East African Safari Rally,	(11-15 Apr) Joginder Singh/David Doig (KEN)	Colt Lancer 1600GSR
WRC1975:	23rd Safari Rally (27 - 31 Mar),	Ove Andersson/ Arne Hertz (SWE)	Peugeot 504
WRC1976:	24th Safari Rally (15 - 19 Apr),	Joginder Singh/David Doig (KEN)	Lancer 1600 GSR
WRC1977:	25th Safari Rally (7 - 11 Apr),	Bjorn Waldegaard/Hans Thorselius (SWE)	Ford Escort RS1800
WRC1978:	26th Safari Rally (23 - 27 Mar)	Jean-Pierre Nicholas/Jean-Claude	Lefebvre (FRA) Peugeot 504 V6 Coupe
WRC1979:	27th Safari Rally (12 - 16 Apr),	Shekhar Mehta/Mike Doughty (KEN)	Datsun 160J
WRC1980:	28th Safari Rally (3 - 7 Apr),	Shekhar Mehta/Mike Doughty (KEN)	Datsun 160J
WRC1981:	29th Safari Rally (16 - 20 Apr),	Shekhar Mehta/Mike Doughty (KEN)	Datsun Violet GT
WRC1982:	30th Marlboro Safari Rally (8 - 12 Apr),	Shekhar Mehta/Mike Doughty (KEN)	Datsun Violet GT)
WRC1983:	31st Marlboro Safari Rally (30 Mar - 4 Apr),	Ari Vatanen (FIN)/ Terry Harryman (GB)	Opel Ascona 400
WRC1984:	32nd Marlboro Safari Rally (19 - 23 Apr),	Bjorn Waldegaard/Hans Thorselius (SWE)	Toyota Celica TCT



Bjorn Waldegard, 1977, '84, '86

Shekhar Mehta, 1973, '79, '80, '81, '82

Miki Biason, 1988, '89

Carlos Sainz, 1992

Tommi Makinen, 1996, '2001

WRC1985:	33rd Marlboro Safari Rally (4 – 8 Apr).	Juha Kankunen (FIN)/Fred Gallagher (GB)	Toyota Celica TCT
WRC1986:	34th Marlboro Safari Rally (29 Mar – 2 Apr).	Bjorn Waldegard (SWE)/ Fred Gallagher (GB)	Toyota Celica TCT
WRC1987:	35th Marlboro Safari Rally (16 – 20 Apr).	Hannu Mikkola (FIN)/ Arne Hertz (SWE)	Audi 200 Quattro
WRC1988:	36th Marlboro Safari Rally (31 Mar – 4 Apr).	Miki Biason/Tizino Sivielo (ITA)	Lancia Delta HF Integrale
WRC1989:	37th Marlboro Safari Rally (23–27 Mar).	Miki Biason/Tizino Sivielo (ITA)	Lancia Delta HF Integrale
WRC1990:	38th Marlboro Safari Rally (11–16 Apr).	Bjorn Waldegard (SWE) Fred Gallagher (GB)	Toyota Celica GT-Four ST165
WRC1991:	39th Martini Safari Rally (27 Mar – 1 Apr).	Juha Kankunen/Juha Piironen (FIN)	Lancia Delta HF Integrale 16v
WRC1992:	40th Martini Safari Rally 27 (Mar – 1).	Carlos Sainz/Luis Moya	Toyota Celica Turbo 4WD
WRC1993:	41st Trust Bank Safari Rally (8–12 Apr).	Juha Kankunen/Juha Piironen (FIN)	Toyota Celica Turbo 4WD
WRC1994:	42nd Trust Bank Safari Rally (31 Mar – 3 Apr).	Ian Duncan/David Williamson (KEN)	Toyota Celica Turbo 4WD
WRC1995:	43rd Safari Rally (14–17 Apr).	Yoshio Fuji (JPN)/Arne Hertz (SWE)	Toyota Celica Turbo 4WD
WC1996:	44th Safari Rally (5–7 Apr).	Tommi Makinen/Seppo Harjanne (FIN)	Mitsubishi Lancer EVO III
WRC1997:	45th Safari Rally (1–3 Mar).	Colin McRae/Nicky Grist (GB)	Subaru Impreza
WRC1998:	46th Safari Rally (28 Feb – 2 Mar)	Richard Burns/Robert Reid (GB)	Mitsubishi Carisma GT Evo IV
WRC1999:	47th Safari Rally (26–28 Feb).	Colin McRae/Nicky Grist (GB) Ford Focus	WRC Safari
WRC2000:	48th Sameer Safari Rally (25–27 Feb).	Richard Burns/Robert Reid (GB)	Subaru Impreza WRC00
WRC2001:	Safari Rally (20–22 Jul).	Tommi Makinen/Risto Manninenmaki (FIN)	Mitsubishi Lancer Evo 6.5
WRC2002:	50th Inmarsat Safari Rally (12–14 Jul).	Colin McRae/Nicky Grist Ford	Focus RS WRC02
ARC2003:	51st KCB Safari Rally (9–11 Oct).	Glen Edmunds/Titch Phillips (KEN)	Mitsubishi Lancer Evo VI
ARC2004:	52nd KCB Safari Rally (12–14 Mar).	Carlo Tundo/Tim Jessop (KEN)	Subaru Impreza
ARC2005:	53rd KCB Safari Rally (15th – 17th Jul).	Glen Edmunds/Des Page-Morris (KEN)	Mitsubishi Lancer EVO VII
ARC2006:	54th KCB Safari Rally (24 – 26 Mar).	Azar Anwar/George Mwangi (KEN)	Mitsubishi Lancer EVO VI
ARC/IRC2007:	55th KCB Safari Rally (9–11 Mar).	Conrad Rautenbach/Peter March (ZIM)	Subaru Impreza
ARC2008:	56th KCB Safari Rally (27–29 Jun).	Lee Rose/Piers Daykin (KEN)	Mitsubishi Lancer EVO IX
ARC2009:	57th KCB Safari Rally (3–5 Apr).	Carlo Tundo/Tim Jessop (KEN)	Mitsubishi Lancer EVO IX
ARC2010:	58th KCB Safari Rally (2–4 Apr).	Lee Rose/Piers Daykin (KEN)	Mitsubishi Lancer EVO IX
ARC2011:	59th KCB Safari Rally (17–19 Jun).	Carlo Tundo/Tim Jessop (KEN)	Mitsubishi Lancer EVO IX
ARC2012:	60th KCB Safari Rally (9–10 Jun).	Carlo Tundo/Tim Jessop (KEN)	Mitsubishi Lancer EVO IX
ARC2013:	61st KCB Safari Rally (5–7 Jul).	Baldev Chager/Ravi Soni (KEN)	Mitsubishi Lancer EVO X
ARC2014:	62nd KCB Safari Rally (12–14 Sep).	Baldev Chager/Ravi Soni (KEN)	Mitsubishi Lancer EVO X
ARC2015:	63rd KCB Safari Rally (4–5 Apr).	Jaspreet Singh Chattha/Gurdeep Panesar (KEN)	Mitsubishi Lancer EVO X R4
ARC2016:	64th KCB Safari Rally (10–11 Jun).	Jaspreet Singh Chattha/Gurdeep Panesar (KEN)	Mitsubishi Lancer EVO X R4
ARC/KNRC2017:	65th Safari Rally (17–18 Mar).	Tapio Laukkanen (FIN)/Gavin Laurence (KEN)	Subaru Impreza WRX STI
ARC/KNRC2018:	66th Safari Rally (17–18 Mar).	Carlo Tundo/Tim Jessop (KEN)	Mitsubishi Lancer EVO X R4
ARC/KNRC2019:	67th Safari Rally (5–7 Jul).	Baldev Chager/Ravi Soni (KEN)	Mitsubishi Lancer EVO X R4

ARC /WRC 2020	68th Safari Rally	Cancelled	Covid-19
---------------	-------------------	-----------	----------

WRC 2021 69th Safari Rally 23rd-27th Jun Sebastian Ogier/Julien Ingrassia Toyota Gazoo Racing WRT

2. Contact details

2.1 Permanent contact details (*Permanent Secretariat*)

WRC Safari Rally
Moi International Sports Centre,
Kasarani, Thika Road,
Nairobi, Kenya.
Telephone: +254 710 692 777 / +254 710 694 441
Email: info@safarirally.co.ke

S1°13'49.51" E36°53'36.42"
Website: www.safarirally.co.ke
Facebook: www.facebook.com
Twitter: #WRCsafarirallyKE

2.2 Key officials

Chief Executive Officer	Phineas Kimathi
FIA Liaison	Surinder Thatthi
Event Director	Jim Kahumbura
Clerk of the Course	Gurvira Bhabra
Deputy Clerk of the Course(s)	George Mwangi
	Nazir Yakub
	Onkar Kalsi
Route Liaison / Media Safety	Anwar Sidi
Secretary of the Event	Hellen Kagendo
Chief Safety Officer	Norris Ongala
Scrutineers (Chief Scrutineer)	Musa Locho
Chief Medical Officer (CMO):	Dr Raj Jutley
Timekeeping (Chief Timekeeper)	Darash Patel
Competitors' Relations Officer (CRO)	Joan Nesbitt
Chief Controller	Harjit Sagoo
Head of Communications	Elias Makori
Media Director	Peter Njenga
Environmental Officer	Peris Njoroge
Chief Security Officer	Comm. Julius Kabiru
Security & Traffic Liaison	Deven Jadeja
Service Park Manager	Joel Muchiri
Rally Control Manager	Viral Jadeja
Chief Communications Officer	Deepak Dhodia

2.3 Rally HQ Contact Details

Safari Rally Service Park, Naivasha

c/o KENYA WILDLIFE SERVICE TRAINING INSTITUTE (KWSTI)

P.O. Box Private Bag, Kasarani

Telephone: +254 710 692 777 / +254 710 694 441

info@safarirally.co.ke

S 0°44'1.58" E 36°27'9.54"

WRC Safari Rally (Permanent Office)

Moi International Sports Centre,

Kasarani Thika Road,

Nairobi, Kenya.

Telephone: +254 710 692 777 / 710 694 441

Email: info@safarirally.co.ke

Websight: www.safarirally.co.ke.

2.4 Media Contact Details

Media Office (Permanent Rally Office)

WRC Safari Rally Kenya

Moi International Sports Centre,

Kasarani

P.O. Box Private Bag, Kasarani

Thika Road,

Nairobi, Kenya

Telephone: +254 710 692 777 / 710 694 441

Email: media@safarirally.co.ke

Website: www.safarirally.co.ke

Media Office (During the event)

KWSTI Service Park, Naivasha

Telephone: +254 710 693 535 / 798 980 058

Email: media@safarirally.co.ke

3. Programme and Critical Deadlines

3.1 Schedule Before the Rally Week

Monday 21 February		
	Publication of Rally Guide 1	Website
Monday 18 April		
	Publication of Supplementary Regulations	Website
	Opening Date of Entries	
Monday 09 May		
	Final date to notify fuel requirements	Order from Fuel Supplier
Monday 23 May		
	Final date to receive import papers	Permanent Secretariat
	Closing date for entries (GMT -1800hrs)	Permanent Secretariat
	Issuing of the Road Book	Permanent Secretariat / Courier
	Publication of Rally Guide 2	Website
Monday 06 June		
	Final date to order extra material	Permanent Secretariat
	Final date for Shakedown registration (except P1)	Permanent Secretariat
	Final date for submitting Joint Service Request form	Permanent Secretariat
Friday 17 June		
10:00	Opening of Service Park for Teams	Service Park, Naivasha

3.2 Schedule During the Rally Week

Sunday, 19 June 2022		
10.00 / 18.00	Rally Office opening hours	Service Park
10.00 / 13.00	Administrative checks and collection of materials and documents for FIA P3 and non-priority drivers (Schedule to be published)	Rally Office
10.00 / 13.00	Reconnaissance registration and collection of reconnaissance GPS tracker for all drivers (Schedule to be published)	SAS Workshop, Service Park
12.00 / 18.00	Media Accreditation (for recce only)	Rally Office
13.00 / 18.00	Administration checks for P1 and P2 competitors. (Schedule to be published)	Rally Office
20.00	Deadline for all new drivers and co-drivers to have completed the FIA e-Learning course on WRC Tracking System	

3.2 Schedule During the Rally Week

Monday, 20 June 2022		
06.30 / 18.00	Rally Office opening hours	Service Park
07.00 / 18.05	Reconnaissance Day 1 (see Appendix 2)	
10.00 / 16.00	Scrutineering / component sealing for P2, P3 & non-priority competitors (schedule will be published in a Bulletin)	Service Park
10.00 / 12.00	Collection of FIA Safety Trackers	SAS Workshop, SP
13.30 / 15.00	Weight checks for Manufacturers	Service Park
Tuesday, 21 June 2022		
07.00 / 18.10	Reconnaissance – Day 2 (see Appendix 2)	
09.00 / 20.00	Rally Office opening hours	Service Park
09.00 / 12.30	Sealing and marking for Manufacturers (schedule will be published in a Bulletin)	Service Park, individual service bays
14.00 / 19.00	Media Centre / Media Accreditation Centre open	Service Park
16.00	Team Managers' meeting (Manufacturer Teams)	Pavilion, Service Park
17.00	Publication of Start List for Shakedown (P1 & invited drivers)	ONB
18.00	Helicopter Pilots' briefing	Online meeting
18.45	Photographers' safety briefing	Photographers Room, SP
16.00 / 19.00	Return of reconnaissance trackers	SAS Workshop, SP
19.00	<u>ALL</u> Drivers and Co-drivers Safety Briefing	Service Park, Pavilion
19.30	Safari Rally Welcome Cocktail – All Drivers (compulsory)	Service Park, Pavilion
Wednesday, 22 June 2022		
08.00 / 18.30	Rally Office opening hours	Service Park
10.01 / 12.00	Shakedown For P1 and Invited Drivers	Loldia
11.30 / 13.00	FIA P2 & P3 drivers	
13.00 / 14.00	Non-priority drivers	
13.00	Meet the Crews	Media Centre
13.30	FIA Pre-rally Press Conference	Media Centre
14.15	Tree Planting for all drivers	Service Park
15.00	Publication of Start lists for Sections 1 & 2	ONB
15.30	Extrication Training	Service Park

3.2 Schedule During the Rally Week

Thursday, 23 June 2022		
07.30	Reconnaissance of SS1	Kasarani
08.00 / 18.30	Rally Office opening hours	Service Park
08.00 / 19.00	Media Centre open	Service Park
08.00 / 20.00	Media Accreditation Centre open	Service Park
09.45 11.00 11.50 12.15	Press Conference – local media, Nairobi Autograph Session P1 crews meet the President Presidential and VIP speeches	Kenyatta International Convention Centre (KICC), Nairobi
12.46	Start of Section 1 (1 st Car)	KICC, Nairobi
14.00 14.08	President arrival at Super Special (SSS1) Start of Super Special (SSS1)	Kasarani, Nairobi
Friday, 24 June 2022		
06.45 / 20.00	Rally Office opening hours	Service Park
07.00	Start of Section 2	
08.00 / 22.00	Media Centre open	Service Park
20.30	Publication of the Start List for Section 4	ONB
Saturday, 25 June 2022		
06.15 / 21.00	Rally Office opening hours	Service Park
06.35	Start of Section 4	
08.00 / 22.00	Media Centre opens	
21.00	Publication of the Start List for Section 6	ONB
19.30 →	2022 WRC Safari Rally Kenya Prize Giving & Cocktail Party	Lake Naivasha Resort
Sunday, 26 June 2022		
05.45 / 18.00	Rally Office opening hours	Service Park
06.00	Start of Section 6	
06.45 / 22.00	Media Centre open	Service Park
14.18	SS19 (Power Stage)	
15.24	End of the competition element of the rally	Service Park
16.00	Trophies presentation – Podium	Service Park
16.15	Final scrutineering	Service Park
16.30	Return of FIA Safety Tracking System	SAS Workshop, SP
16.45	FIA Post-rally Press Conference	Media Centre
18.30	Publication of the Provisional Classification	ONB

4. Entry Details

4.1 Entry Procedure

Those wishing to take part in 2022 WRC SAFARI RALLY KENYA must register and fill-in the electronic entry form published by the FIA (<https://registrations.fia.com>) duly completed before the closing date for entries. Any non-registered competitor wishing to take part in a WRC rally must register and fill in the FIA electronic entry form: <http://registrations.fia.com/wrcken>

The entry will only be accepted if accompanied by the total amount of the entry fee. To be accepted, competitors must send a proof of payment of the entry fee by e-mail to the secretary of the rally (info@safarirally.co.ke) by the closing date of entries

4.2 Titles for Which the Rally Counts

- FIA World Rally Championship for Drivers
- FIA World Rally Championship for Co-Drivers
- FIA World Rally Championship for Manufacturers
- FIA World Rally Championship for Teams
- FIA WRC2 Championship for Drivers
- FIA WRC2 Championship for Co-Drivers
- FIA WRC2 Championship for Teams
- FIA WRC3 Championship for Drivers
- FIA WRC3 Championship for Co-Drivers

4.3 Criteria for Acceptance of Entry

The maximum number of entrants is set to 50 cars. If more than 50 entries are received, the Organizers will create a reserve list. All vehicles must comply with the provisions of Appendix J.

- All entries received at WRC Safari Rally Secretariat will be checked for vehicle eligibility by a sub-committee. Only after confirmation by the FIA Technical Department will an entry be accepted.
- In case the maximum number of entries is reached, the Organizers reserve the right to accept an entry of an FIA eligible car over that of any Regional or National entry.
- NOTE: All communications relating to entries will only be received at info@safarirally.co.ke.

Any information on entries not sent to info@safarirally.co.ke will not be regarded as an official communication.

4.4 Entry Fees

Fees for Manufacturers and WRC Teams, including all WRC competitors in all WRC Championships (i.e. WRC, WRC2, WRC3 as defined in the FIA WRC Sporting Regulations) are waived for the 2022 WRC Safari Rally Kenya.

Entry Fees for non FIA registered teams:

i) Private Entry

(When the competing car is entered by the driver or the co-driver)

- With the optional advertising proposed by the organizers: € 500
- Without the optional advertising proposed by the organizers: €1,000

ii) Legal Entry

(When the competing car is entered by a team (not a Manufacturer), a company or other legal entity (with legal competitor's license issued by the FIA)

- With the optional advertising proposed by the organisers: € 1000
- Without the optional advertising proposed by the organisers: € 1,500

iii) Other Fees:

- Reconnaissance Only Fee: € 500
- Extra Auxiliary Plate: € 200

4.5 Entry Package for Non FIA Registered Teams

The contents of packages for Manufacturer, WRC2 and WRC 3 competitors are defined in the 2022 WRC Regulations.

The following table describes the contents of entry packages for other crews

	Legal Entries	Private Entries
Vehicle plates		
Service plates	2	2
Auxiliary plates	1	0
VIP plates	1	0
Services		
Area in Service Park	100 m ²	100 m ²
Administration		
Regulations	1 (1)	1 (1)
Road book sets	3 (1)	2 (1)
Rally Guide 1	Website and DNB	Website and DNB
Rally Guide 2	2	1
Route Maps	5 (1)	3 (1)
Programme	5	3
Results	Website and DNB	Website and DNB
() No. Of copies of the total to be mailed or courier to the designated recipient in the entry forms		

Additional materials can be requested to the organisers.

5. Service Park



5.1 Service Park location

Service Park is located at THE KENYA WILDLIFE SERVICE TRAINING INSTITUTE (KWSTI), In Naivasha. (S 0°44'1.58" E 36°27'9.54")

The Service Park is located in an outdoors secured area on a hard-levelled surface. Competitors wishing to use a joint service area with another competitor must inform the Organisers by Thursday June 03, 2021 by completing the Joint Service Request form. It is recommended for P1 teams to send a service area and/or workshop layout plan to place containers according to requirements, thus avoiding extra use of container hoists. This information should be e-mailed to info@safarirally.co.ke

Information about the service park(s), etc. Facilities at service park
Service Park content – see list at the end of this Appendix

Environmental requirements

All teams will be required to use a ground protector for each of the vehicles serviced.

5.2 Service Area

Manufacturer	2 Cars	As per 2022 WRC Regulations	900m²
	3 Cars	As per 2022 WRC Regulations	1300m ²
WRC Team	1 Car	As per 2022 WRC Regulations	120m ²
WRC2 Team		As per 2022 WRC Regulations	100m ²
WRC3 Team	1 Car		100m ²
Others	1 Car		100m ²

Other sizes may be available for a fee upon request for WRC3 and Non-Priority Teams. Please contact the organiser at info@safarirally.co.ke

5.3 Access to the Service Park

Competitors can access the service park from Friday 17 June at 10:00hrs . Only competing cars and vehicles with special windshield decals “Service” and “Auxiliary” issued by the Organisers will be allowed in the Service Park. Manufacturer and overseas competitors with freight can, by appointment, arrange for earlier access to the Service Park.

Please contact the Organisers at info@safarirally.co.ke with any special requests

5.4 Facilities

The following extra facilities can be ordered for use in the service area.

Please contact the Organisers for special requests.

The following facilities will be provided at various points around the service park:

- Toilets
- Waste Removal / Hazardous Waste Collection
- Water (Direct supply to Manufacturers, WRC Teams, WRC2 and WRC3, general outlets for others)
- Lighting
- Wi-Fi - Access details will be provided by the on-site Rally Office
- Car Wash (Not located within the service park)

The following extra facilities can be provided through the Organisers:

- Private Toilets (Manufacturers will be provided as per WRC regulations)
Waste Removal
- Private Water Supply (may be available, MUST be booked in advance)
- Power Supply (see below)
- Ballast
- Additional security services
- Forklift services
- Crowd barriers / fencing
- Extra service area space

Please contact the Organisers for special requests.

Extra facilities can be requested by filling in the Service Facilities Request form in the Competitors section of the event's website: www.safairally.co.ke

These services are offered in addition to those included in the 2022 FIA WRC Regulations.

5.5 Security and Medical Services

The Service Park will be under surveillance 24 hours a day starting Friday 17 June. Extra and or special security services can be hired through the Organisers, contact info@safairally.co.ke

- A 2-bed Medical Centre will be set up and equipped in accordance with the 2022 FIA International Sporting Code, App H Art 5.3.5

5.6 Promotional Stands

Contact the Organisers at info@safairally.co.ke for prices and availability of promotional stands in the Rally Service Park in Naivasha, on-stage spectator areas and in the commercial zone at the Super Special venue in Nairobi.

5.7 Traffic Movements

The traffic flow direction shown on the service park layout must be respected at all times by competitors and their service / auxiliary vehicles.

Teams may bring their service/auxiliary and recce car vehicles into the service park, as long as they can park them within their designated area. Otherwise these vehicles must be taken to the auxiliary parking located close to the service park. Any parking of team vehicles outside their designated area in the service park is strictly prohibited.

5.8 Environmental Requirements

A car wash facility will be available near the Service Park. Washing cars within the service park is prohibited at any time. Wheels and other parts may be washed in the designated wash bays set up within the service park.

All competitors must put in place a suitable size plastic ground sheet to cover the whole area where service work is being carried out. This ground sheet must be impervious to all fluids. Cleaning of the ground sheets must be done so that no materials are allowed to come into contact with the ground surface. All waste material must be disposed of in the facilities provided at the Service Park.

5.9 Service Park Manager

For further additional information please contact the Service Park Manager – Joe Muchiri

Tel: +254 721 597 424

Email: muchiri@safarirally.co.ke

Please let Joe know of any special requests as soon as possible and well in advance of the cut off dates (particularly for additional space). This will greatly assist with the planning of the site. Please contact Joe on the email address above should you have any queries or problems.

5.10 Recovery of Retired Cars

Competitors should contact Rally Control to plan for the recovery of their car. Telephone: +254 726 961 236

5.11 Retirements and Re-starts

Refer to Article 54 of the 2022 FIA WRC Regulations.

Competitors who retire will be assumed to restart the rally at the next section following an overnight halt. A competitor who has retired and does not wish to re-start must notify the Organisers as soon as possible using the form in the road book.

5.12 Power

Generators are permitted in the Service Park however these must be super silent diesel or LPG. Generators must be fenced off to restrict access to competent personnel only.
NO PETROL GENERATORS ARE PERMITTED ON THE SITE AT ANY TIME

6 Two-Way Radio

Cellular phones and Family Radio Service stations (e.g. Motorola Talkabout) with a range of under 4km are exempt from radio license, provided they comply with the Communications Authority regulations. The use of all other kinds of radio transmitters is regulated by the Communications Authority (and requires a radio license).

Should you require the use of UHF/ VHF frequencies during the rally, please contact info@safarirally.co.ke before the 01 April, 2022 Throughout the rally, the use of amateur radio frequencies is prohibited.

7. Fuel / Tyres

7.1 Fuel and Refueling

All participants, without exception, may only refuel in the Refueling stations designated in the Road Book as Refuelling Zones (RZ).

Only the 3 types of fuel below are permitted;

1- P1 Performance Fuels GmbH

2- Avgas

3- Fuel at commercial filling stations indicated in the road book (non-priority driver use only) unless otherwise detailed in the supplementary regulations.

The above (1 and 2) must be ordered from the respective suppliers BEFORE Tuesday 11 May

Online WRC Fuel Order process can be found here: <https://tinyurl.com/bde2u62x>

Online Order process for AVGAS can be found here: <https://tinyurl.com/w2lwve6w>

All competitors are reminded that they must carry their refuel adaptor for the Remote Refuel Zones.

i- Twin Lakes on Friday 25th June RZ 2 / 4: S0°49.360 'E36°17.861 ' (29.89 km from SP)

ii- Elmenteita Cross Roads on Saturday 26th June RZ 6 / 8: S0°28.751 ' E36°09.467 ' (71.50 km from SP)

iii- KWS Training Institute on all days

7.2 Tyres

As per 2022 FIA WORLD RALLY CHAMPIONSHIP SPORTING REGULATIONS, Art 13 Pirelli Tyres order form here: <https://tinyurl.com/4pqg9tvo>

8. Import of Vehicles and Spare Parts

These instructions are preliminary and will be subject to further revisions. Please visit the official web site (www.safarirally.co.ke) for updates on this document.

To make temporary imports into Kenya, these instructions should be fully observed by all participants to avoid unnecessary delays and subsequent extra costs.

These instructions must be acknowledged and accepted as requested herein by all participants.

Contact: info@safarirally.co.ke

Tel: +254 710 692 777 / 710 694 441

Safari Rally has appointed Clearing and Forwarding, logistics and transport services to:

<p>Hambu Freight Services Ltd 3rd Floor, Old Canon Towers, Moi Avenue, Mombasa PO Box 99132-80107 +254 733 634 717 +254 722 570 062 hambufreight@kenyaweb.com Contact person: Peter Mburu</p>	<p>Callfast services Ltd K.A.H.L. – JKIA. 1st Floor. Rm 104, P.O. Box 5199-00100, Nairobi, Kenya. Office Tel: +254 722 696860 E-mail: info@callfast.co.ke Mwambua@callfast.co.ke Lorine@callfast.co.ke</p>
<p>Keihin Maritime Services 3rd Floor, Al-Amin Plaza Sauti ya Kenya Road PO Box 42197-80100 +254 41 223 0349 info@keihinmaritime.co.ke</p>	<p>Alexandria Freight Forwarders Ltd Head Office: 7th Floor, Hazina Towers, Wing A Monrovia Street, Nairobi P.O. Box 21896-00400 +254 20 224 3542/ 3/ 4</p> <p>Mombasa Branch 1st Floor, Canon House Moi Avenue, Mombasa PO Box 81330 +254 41 222 8046 alexandria@africaonline.co.ke</p>
<p>Maersk Kenya www.maersk.com Contact: Mr. Carl Lorenz MD: Maersk Kenya Email: carl.lorenz@Maersk.com +254 705035531</p>	<p>Contact person: Mr. Washington +254 722 511 210 wmuthamia@alexandriafreight.com www.alexandriafreight.com</p>

8.1 Customs Clearance

Customs clearance and checking of goods is mandatory for temporary import into Kenya. It must be completed at the seaport or airport of entrance.

Sea Freight will be cleared at the Inland Container Depot in Naivasha. Authorities may check papers and cargo during transit from the port of Mombasa.

The Consignee must register the customs broker in order to be allowed to perform temporary importation of vehicles and parts for the event.

REQUESTED DOCUMENTS

For all shipments, customs clearing procedures require copy of the following documents to be sent to the agent at least 15 days prior to the estimated date of arrival.

- Proforma Invoice
- Packing list
- Import form duly completed. The form can be found on the official website. (No handwriting will be accepted, Typewriter or Computer printed only)
- Bill of lading / Airway bill. To be sent by fax/e-mail to the agent as soon as equipment is loaded into the vessel.

FIA-AIT Carnet is permitted for importation of motor vehicles. ATA Carnet issued by the Chamber of Commerce is not permitted for importation of cars and spare parts in Kenya. Please do not use it

Spare parts are temporarily imported by supply of a bank or insurance bond for the value of the duty and taxes evaluated by Kenya Customs Authority.

DOCUMENT INFORMATION

PROFORMA INVOICE

Original Proforma Invoice and packing list has to be sent by e-mail on Word/Excel format to info@safarirally.co.ke, specifying all items being sent to KENYA, with their value plus cost of freight and insurance, model and reference numbers. One individual “import form” per vehicle must be completely filled and checked.

All chassis and engine numbers must be correct to prevent any delays for clearing.

PACKING LIST

In order to facilitate customs checking it is very important to complete this document. It must indicate net and gross weights of each box or container and should detail every major item as indicated in the proforma invoice. Hand tools and small elements such as bolts, nuts, etc. may be indicated as kit of (...) (approximate number of elements in each kit must be stated). It is advisable that consumables should not be included as these cannot be items imported temporarily.

IMPORT FORM

All documents have to be consigned as indicated hereafter:

WRC Safari Rally Project

Moi International Sports Centre, Kasarani Thika Road, Nairobi, Kenya.

Telephone: +254 710 692 777 / 710 694 441

C/O (INSERT 1, 2, 3, or 4 from your chose clearing agent as listed in the above table)

BILL OF LADING / AIRWAY BILL

For both sea and air shipments it is highly recommended to send these documents as "FREIGHT PREPAID".

All shipments must be consigned to: (Your respective chosen Forwarding and Clearing agent)

BILL OF LADING: Consignee and Notify as stated below.

Please use "EXPRESS RELEASE/SEA WAY BILL"

ALL SEA SHIPMENT documents should be sent only in electronic format

AIRWAY BILL: It should indicate "Jomo Kenyatta International Airport, Nairobi" as airport of destination.

Consignee and Notify as stated below.

*All AIR SHIPMENT documents should be sent attached to the Airway Bill.

CONSIGNEE

Invoices and packing list have to be addressed as indicated hereafter:

WRC Safari Rally Project

Moi International Sports Centre, Kasarani

Thika Road, Nairobi, Kenya.

Telephone: +254 710 692 777 / 710 694 441

C/O (Your respective chosen Forwarding and Clearing agent NOTIFY THE AGENT and the Permanent Secretariat

Please send a copy to Email: info@safarirally.co.ke

IMPORTANT NOTICE

For OCEAN shipments, the shipper must send, via e-mail, copies of all documents AT LEAST 21 DAYS BEFORE ARRIVAL OF GOODS TO KENYA and 7 DAYS BEFORE ARRIVAL for the AIR shipments. Failing to do this could cause unnecessary delays and extra costs in customs and warehousing.

RE-EXPORTING

Participants must note that all goods sent to Kenya with temporary import status must be re-exported. If not so for any reason, the status should be changed as final import and, if allowed, the participant must pay all duties and taxes within the legal timeframe. In case of total or partial relocation of goods, or change of shipment method (air to sea or vice versa) participants should notify the Agent in advance and with sufficient information in order to fulfil all custom procedures.

RECOMMENDED SHIPPING LINE

Maersk Kenya

www.maersk.com

Contact: Mr. Carl Lorenz

MD: Maersk Kenya

Email: carl.lorenz@Maersk.com

+254 705035531

8.2 Inland Logistics Procedures

After customs clearance is completed, vehicles and goods will be able to proceed to their final destination at the Service Park, in Naivasha. The organisers will facilitate preferential transport by SGR Rail services for Sea containers to be moved from Mombasa to the Mai Mahiu Inland Container Depot.

A standard inland transit time from JKIA to Service Park, Naivasha: 4hrs

A standard inland transit time from Mai Mahiu Inland Container Depot to Service Park, Naivasha: 2hrs

At the time of arrival at the Service Park, containers can be immediately delivered to workshops previously designated by teams, or sent to temporary holding areas within the Service Park.

It is recommended to send a service area and/or workshop layout to place containers according to requirements, thus avoiding extra use of cranes. This information should be sent to info@safarirally.co.ke

Cranes and forklift trucks will be available for use by all participants during the event (for rates please send request to the above contact).

Insurance bonds, covering at least third party (liability) damage, must be issued by a Kenyan insurance company or by a foreign company with proper representation in Kenya.

For insurance bonds we suggest working with your appointed Clearing agent. Should you require assistance, kindly contact info@safarirally.co.ke

Note: you will require a minimum 3rd party insurance & temporary road permit (can normally be taken out by the Clearing & Forwarding Agents)

8.3 Passengers arriving in Kenya

When traveling to Kenya, each person is allowed to bring in \$500 USD worth of imported goods tax-free that will remain in the country. If any person will be carrying goods destined for the rally, they should advise us at info@safarirally.co.ke stating the name of the passenger, the flight number and a description of the goods to make sure that entry is permitted through customs.

Legal Provisions

Persons making temporary visits to Kenya not exceeding three (3) months are allowed to bring in with them the following goods duty free;

Non-consumable goods for personal use during the visit which will be exported back with the passenger at the end of the stay.

Consumable goods and non-alcoholic beverages to be used during their stay in the country.

The following goods will be allowed duty-free only in the quantities specified and only if imported as accompanied baggage FOR passengers who have attained the age go eighteen (18) years:

Spirits, including liquors not exceeding one litre, or wine not exceeding two litres

Perfumes and toiletries not exceeding in all one litre, of which the perfume should not be more than a quarter litre.

Cigarettes, cigars, cheroots, cigarillos, tobacco and snuff not exceeding in all 250 grams in weight

The non-consumable goods should be exported within thirty days or a period not exceeding sixty days from the date the passenger leaves the country otherwise duty becomes payable

For any further information or queries on the above, please contact
info@safarirally.co.ke

8.4 Payments

Teams are wholly responsible for any payments to their Clearing and Forwarding agents and any transportation in Kenya.

8.5 Visas

E-Visa application website – an online system that requires to be completed before departing for Kenya.

Do you require a visa: who requires a visa?

How do I Apply

You need to:

Click registration at www.ecitizen.go.ke

Select Register as a Visitor.

Once Logged in, Select Department of Immigration services.

Select submit Application.

Select Kenyan Visa.

Select the type of Visa and read the Instructions Carefully.

Fill in the application form.

Pay Using visa card, Mastercard and other debit cards.

Await approval via email, then download and print the eVisa from your eCitizen account.

Present your printed eVisa to the immigration officer at the port of entry.

<https://www.ecitizen.go.ke>

9. Helicopters

9.1 Helicopter registration

In accordance with the FIA Safety Regulations and the requirements of the Civil Aviation authorities, all helicopters participating in the Rally must be registered with the Organiser.

All helicopters operating in the rally area during the event must be registered with the organizer at a cost of €2,000.00(+VAT16%) and have completed the registration form by Thursday May 27 2022. To be permitted to enter the airspace prohibited to normal air traffic, pilots must be familiar with the special flight guidelines.

Airspace above the Special Stages are CLOSED for the exception of WRC TV, AIR RESCUE and SECURITY. Kindly contact info@safarirally.co.ke for permitted landing areas for all helicopters and fixed wing aircraft.

Attendance at the pilot's briefing on Wednesday 22 June, 2022, at 09:00 hrs., is mandatory for all pilots. After registration and payment of the appropriate fee, all pilots will receive additional information at least one week before the event.

As all correspondence will be made by e-mail. An e-mail address must be specified on the registration form.

9.2 Helicopter Charter Companies

Helicopter Registration form can be found here: <https://tinyurl.com/ugxd66oz>

Albatros Aviation Ltd +254 791 696642	Level Up Ltd +254 (0) 714 88859 hamish@levelupaero.com
KIDL Helicopters +254 (0)722 782947 / +254 (0)734 257647 flying@kidlhelicopters.com www.kidlhelicopters.com	Tropic Air Kenya +254 (0) 722 207 300 or +254 (0) 734 333044 info@tropicairkenya.com www.tropicairkenya.com
Flex Air Charters +254 (0) 726 293 984 nrbops@flexaircharters.co.ke http://flexaircharters.co.ke	Corporate Helicopters (Youth Aviation) +254 (0) 707 777 100 or +254 (0) 735 777 100 heliops@corporatehelicopters.co.ke https://corporatehelicopters.co.ke
Ventura Aviation +254 (0) 720 681 785 finance@venturaviation.com	

10. Hospitality arrangements

Contact details for person in charge of hospitality arrangements

Faith S. Wathome

Head of Hospitality

Mobile: +254 722 410375

faith@safarirally.co.ke

11. Hotel / Accommodation Reservation

WRC Safari Rally Recommended hotels can be found online, here;

<http://www.safarirally.co.ke/competitors/>

For réservations contact :

Official WRC – Hospitality coordinators and hotel booking agents

Lindberg Holidays and Safaris Ltd

Email : lindberg@lindbergsafaris.com

nicholas@lindbergsafaris.com

Charles@lindbergsafaris.com

Telephone Numbers :

+254 711 456 163 Nicholas

+254 721 377 948 Office

12. Reconnaissance

12.1 Duration and Schedule

Reconnaissance will take place from Monday 20 to Tuesday 21, according to the specified schedule which will be available in the Supplementary Regulations. Only the Driver & Co-driver registered as a competitor and those crews that have paid the reconnaissance only fee are permitted on reconnaissance.

12.2 Registration

All entrants taking part in the reconnaissance must register at the Rally Secretariat to get all the necessary documentation before starting their reconnaissance. Registration for reconnaissance can be done according to the schedule specified in the Rally Programme at the Rally Secretariat. For priority 1 and 2 drivers, a team member duly designated in writing can collect the materials. Other crews have to register in person.

12.3 Reconnaissance Procédure

Reconnaissance form can be found here: <https://tinyurl.com/17vn9q96>

Reconnaissance ONLY form can be found here: <https://tinyurl.com/4m2qpfxd>

Any driver wishing to take part in reconnaissance only will be required to complete the reconnaissance registration form that will be available on the event website. The fee for taking part in reconnaissance ONLY is € 500.

13. Scrutineering, Sealing and Marking

Scrutineering will be performed commencing Tuesday 22 June, following a Detailed schedule published in the Supplementary Regulations, Rally Guide 2 and in subsequent bulletins and will be performed within the Service Park in Naivasha.

14. Shakedown

Shakedown for eligible crews will take place on Wednesday 22 June according to the following schedule:

Priority 1 drivers and invited crews: 13:01 - 15:00

Shakedown for WRC2, WRC3 & Non-Priority Drivers (Optional for Non-Priority Drivers but by prior registration): 15:00 to 16:30

Shakedown for WRC2, WRC3 & Non-Priority Drivers (Optional for Non-Priority Drivers but by prior registration, form here: <https://tinyurl.com/3635zn4w>)

All crews must wear the same FIA approved safety equipment as required for the rally.

14.1 Shakedown Location

The Shakedown test stage will take place in the Loldia Conservancy in Naivasha and is 5.40 kilometres long. The Shakedown stage will be open to all participants (Compulsory for all Priority 1 drivers).

The Main Service Park is located 30.94 km from the Shakedown start and will be used as the main service venue.

Distance from Service Park to Shakedown: 30.94 km

Total Length of the Shakedown: 5.40 km

Total Length of the Shakedown Loop: 6.13 km

Refueling will be available at Refueling Zone at Service Park during Shakedown operating hours.

Reconnaissance for the Shakedown stage will be included in the Reconnaissance Schedule for all drivers

15. Media

As a round of the FIA World Rally Championship, 2021 WRC SAFARI RALLY KENYA follows the regulations and procedures set out by the FIA for media accreditation. Please make sure to read these guidelines and follow them closely.

It is very important to provide all the requested documentation and to send it the correct office. Errors in procedure will result in delayed requests. More information can be requested by emailing info@safarirally.co.ke

15.1 Contacts before the rally

Media Office

WRC Safari Rally

Moi International Sports Centre, Kasarani

Thika Road, Nairobi, Kenya.

Telephone: +254 710 692 777 / 710 694 441

Email: media@safarirally.co.ke

Website: www.safarirally.co.ke

15.2 National publications, National Photographers, National Websites and National Radio Stations.

Requests for accreditation for publications, photographers, websites and radio stations in Kenya must apply on our website www.safarirally.co.ke no later than June 16.

The Chief Media Officer will e-mail the result of the accreditation request to the outlet's headquarters at least two weeks before the rally. If the request is accepted, an agreement will be included, to be signed by the Editor. No accreditation will be finalized without written authority. If the representative of the publication is unable to attend, the Chief Media Officer needs to be notified at least seven days before registration opens.

Television

For all Television accreditations, broadcasters and networks are to contact the WRC Promoter before June 03 2021 at: accreditation@wrc.com

International Publications, Photographers, Radio and Internet Media

All accreditation requests from international publications, photographers and websites must be made to the FIA before June 03 using the online accreditation system on www.fia.com in accordance with the stated procedure.

FIA WRC Permanent Pass Holders

No accreditation request is needed, but both the Chief Media Officer and the FIA Media Delegate need to be informed of the pass holder's intent to attend the event. Please do so by e-mail at least five days before Scrutineering. Principles for accreditation, documentation and photographers

Principles

- a) A maximum of three representatives (journalists or photographers) per publication will be accredited.
- b) A publication will need to comply with the distribution and quality established by the FIA, and be for sale to the public. Internal and club publications cannot be accredited as media outlets. Accreditation decisions are based on the market of the requesting country.
- c) Promoters of any kind, such as PR or marketing personnel, cannot be accredited as media representatives.
- d) Private teams with established drivers may apply for accreditation for a media representative directly to the FIA Media Delegate.
- e) Central and local offices of large international press agencies (AP, AFP, Reuters, ANSA, UPI, DPA, LUSA, BELGA, JIJI, KYODO, EFE, Press Association, SAPA, Australian AP, APA, etc.) will always be accredited directly by the FIA.

B) Required documentation for each request

- a) An accreditation request on the publication's official stationery, signed by the Managing Director or Editorial Director.
- b) The name(s) and charge of the representatives who will cover the event.
- c) General information about the publication, such as frequency and distribution.
- d) Official ID (INE, passport, driver's license) of the people interested in the accreditation.
- e) Testimonials of material published about the 2019 SAFARI RALLY or the FIA World Rally Championship.
- f) Any request by a freelance journalist must be accompanied by a list of articles published during the previous 12 months, including the publication name and date. Late or incomplete requests will not be considered.

National Press Photographers

C) Accreditation for photographers

The number of passes for National Press Photographers is limited by the FIA to 12.

International Press Photographers

Publications or agencies seeking accreditation for a single WRC event must provide proof of independent coverage in the form of at least 15 photographs per pass taken of each event where they attended as accredited media during the previous year.

In the case of an agency, the pictures must have been sold at regular commercial prices to publications that comply with FIA criteria.

For publications, the published pictures must be demonstrated to be original work by the author accredited by the publication.

Commercial/Promotional Photographers

Commercial or promotional photographers may request accreditation to accreditation@wrc.com

15.3 Media Reconnaissance

Media who wish to take part in the reconnaissance must complete the Media Reconnaissance form available at www.safarirally.co.ke and return it to the Organisers no later than Friday 04 June.

Passes must be collected from Media Accreditation, Naivasha on Monday 20 June between 08.00 - 12.00.

16. Medical and Safety Service

Emergency numbers:

+254 710-693-338

+254 710-693-535

+254 710-693-993

It is HIGHLY recommended that all visitors to Kenya have Accident and Medical insurance cover, or the same are covered by their Travel Insurance

16.1 Hospitals

NAIROBI

Aga Khan University Hospital

Telephone: +254 366 2020 / 22 or 3740000 ext. 2020 / 2022

MP Shah Hospital

Telephone: +254 20 429110/ 0722 204 427/ 0733606113

Nairobi Hospital

Telephone: + 254703082000

NAIVASHA

Naivasha Sub-county Hospital

Telephone: +254770735546

KIJABE

Kijabe Mission Hospital

Telephone: +254787145122

ELEMENTAITA

St Mary's Hospital NAKURU

Mediheal Hospital

Telephone: +254735000735

17. List of useful facts and services

The climate in Nairobi County is cooler than average areas in Kenya. Average temperatures for June are between 14-23 degree centigrade.

The climate in Nakuru County is milder than average areas in Kenya. Average temperatures for June are between 9-25 degree centigrade

The tap water is safe to drink when boiled. Drink bottled water bought from supermarkets.

The electric supply is 240 volts. Plugs and sockets are of a three pin design, type G.

Time Zone

The official time during the rally will be GMT time. Sunrise 6:00 am. Sunset 6:30 pm. plus 3h GMT Greenwich Mean Time (GMT)

Currency

Currency is Kenya shillings divided into 10 cents.

The denominations in circulation are:

50, 100, 200, 500 and 1000 Coins: 05, 1, 10, 20, 40 shillings

Exchange rate: (at time of publication)

1 US \$:

1 UK Pounds:

1 Euro:

Rates from www.centralbank.go.ke/forex as of 25th January 2022)

Telephones

There are no public telephones in Kenya but you can get this service in hotels.

The International prefix for incoming calls is +254.

There are 3 cell service providers; Safaricom, Airtel and Telkom.

All with upto 4G/LTE capabilities. Sim cards are available upon arrival at JKIA and all shopping malls. Passports will be needed when purchasing and registering the sim card.

Driving

The driver and all passengers are required to use seat belts at all times. It is illegal to use a hand-held mobile telephone whilst driving.

The Police can order Breathalyzer tests of drivers.

The maximum permitted level of alcohol in the bloodstream is 0.08%. Drive on the LEFT, and overtake on the right.

Speed Limits (Cars) Built up areas 48kph

These speed limits are for cars; there are other limits for vans and goods vehicles. There are no motorway tolls once you have entered Kenya and you are driving to Naivasha & Nakuru from Nairobi



WRC SAFARI RALLY KENYA



Appendix 1 Itinerary



Itinerary

Wednesday 22 June 2022

2022 SAFARI RALLY						
Version 1.1						
Shakedown Wednesday 22 June 2022						
TC	Location	SS Dist.	Liaison Dist.	Total Dist.	Target Time	First Car Due
SS		Km.	Km.	Km.		
TC SD	Service Park - KWS Naivasha	-	30.82	30.82		09:56
SD	Shakedown Start	-	30.82	30.82		09:56
	Shakedown Loldia	5.41	-	-		10:01
	Service Park - KWS Naivasha	-	30.80	36.21	Priority Drivers	10:01 / 12:00
	Wednesday Totals	5.41	61.62	67.03	All Drivers	12:00 / 14:30
Start - (Section 1) Thursday 23 June 2022						
0	Start - Kenyatta International Conference Centre					12:46
0A*	Holding Area - In	-	19.60	19.60	0:58	13:44
1		-	0.06	0.06	0:20	14:04
SS 1	Super Special Kasarani	4.84	-	-		14:08
1A*	Parc Fermé In - KWS Naivasha	-	97.35	102.19	2:15	16:23
	Thursday Totals	4.84	117.01	121.85		
					Sunrise - Naivasha	06:35
					Sunset - Naivasha	18:38
* Early check-in permitted						

Shakedown

Section 1

Friday 24 June 2022

2021 SAFARI RALLY						
Version 1.1						
Re-Start (Sections 2 & 3) Friday 24 June 2022						
TC	Location	SS Dist.	Liaison Dist.	Total Dist.	Target Time	First Car Due
SS		Km.	Km.	Km.		
1B	Parc Fermé Out - Service - In	-	-	-		07:00
	Service A (KWS Naivasha)	-	-	-	0:15	
1C	Service - Out	-	-	-		07:15
RZ	Refuel (FIA Fuel) - KWS Naivasha	-	(0.25)	-		
1	<i>Distance to next refuel</i>	(30.85)	(80.39)	(111.24)		
2		-	31.39	31.39	0:42	07:57
SS 2	Loldia 1	19.17	-	-		08:00
3		-	35.07	54.24	1:15	09:15
SS 3	Geothermal 1	11.68	-	-		09:18
RZ	Refuel (FIA Fuel) - Oserian Twin Lakes	-	(14.18)	-		
2	<i>Distance to next refuel</i>	(31.25)	(29.96)	(61.21)		
4		-	25.74	37.42	0:50	10:08
SS 4	Kedong 1	31.25	-	-		10:11
4A	Regroup & Technical Zone - In	-	18.40	49.65	1:08	11:19
4B	Regroup Out & Flexi-Service In	-	-	-	0:40	11:59
	Flexi-Service B (KWS Naivasha)	(62.10)	(110.60)	(172.70)	0:30	
4C	Flexi-Service Out	-	-	-		12:29
RZ	Refuel (FIA Fuel) - KWS Naivasha	-	(0.25)	-		
3	<i>Distance to next refuel</i>	(30.85)	(82.37)	(113.22)		
5		-	31.39	31.39	0:42	13:11
SS 5	Loldia 2	19.17	-	-		13:14
6		-	37.05	56.22	1:15	14:29
SS 6	Geothermal 2	11.68	-	-		14:32
RZ	Refuel (FIA Fuel) - Oserian Twin Lakes	-	(14.18)	-		
4	<i>Distance to next refuel</i>	(31.25)	(29.96)	(61.21)		
7		-	25.74	37.42	0:50	15:22
SS 7	Kedong 2	31.25	-	-		15:25
7A	Parc Fermé & Technical Zone - In	-	18.40	49.65	1:08	16:33
7B	Parc Fermé Out - Flexi Service - In	-	-	-	0:10	16:43
	Flexi-Service C (KWS Naivasha)	(62.10)	(112.58)	(174.68)	0:45	
7C*	Flexi Service Out - Parc Fermé - In	-	-	-		(17:28)
	All cars must be returned to Parc Ferme no later than					20:43
Friday Totals		124.20	223.18	347.38		
					Sunrise - Naivasha	06:35
					Sunset - Naivasha	18:38





* Early check-in permitted

Saturday 25 June 2022

2022 SAFARI RALLY						
Version 1.1						
Re-Start (Sections 4 & 5)						
Saturday 25 June 2022						
TC	Location	SS Dist.	Liaison Dist.	Total Dist.	Target Time	First Car Due
SS		Km.	Km.	Km.		
7D	Parc Fermé - Out Service - In	-	-	-		06:35
	Service D (KWS Naivasha)	-	-	-	0:15	
7E	Service - Out	-	-	-		06:50
RZ	Refuel (FIA Fuel) - KWS Naivasha	-	(0.25)			
5	Distance to next refuel	(44.40)	(76.58)	(120.98)		
8		-	61.54	61.54	1:18	08:08
SS 8	Soysambu 1	29.32	-	-		08:11
9		-	4.24	33.56	0:48	08:59
SS 9	Elmenteita 1 (Live TV)	15.08	-	-		09:08
RZ	Refuel (FIA Fuel) - Crossroads	-	(11.05)			
6	Distance to next refuel	(23.05)	(50.61)	(73.66)		
10		-	15.91	30.99	0:55	10:03
SS 10	Sleeping Warrior 1	23.05	-	-		10:06
10A	Regroup & Technical Zone - In	-	45.50	68.55	1:35	11:41
10B	Regroup Out & Flexi-Service - In	-	-	-	0:42	12:23
	Flexi-Service E (KWS Naivasha)	(67.45)	(127.19)	(194.64)	0:30	
10C	Flexi-Service - Out	-	-	-		12:53
RZ	Refuel (FIA Fuel) - KWS Naivasha	-	(0.25)			
7	Distance to next refuel	(44.40)	(76.58)	(120.98)		
11		-	61.54	61.54	1:18	14:11
SS 11	Soysambu 2	29.32	-	-		14:14
12		-	4.24	33.56	0:48	15:02
SS 12	Elmenteita 2 (Live TV)	15.08	-	-		15:08
RZ	Refuel (FIA Fuel) - Crossroads	-	(11.05)			
8	Distance to next refuel	(23.05)	(50.36)	(73.41)		
13		-	15.91	30.99	0:55	16:03
SS 13	Sleeping Warrior 2	23.05	-	-	0:03	16:06
13A	Parc Fermé & Technical Zone - In	-	45.50	68.55	1:35	17:41
13B	Parc Fermé Out - Flexi Service - In	-	-	-	0:10	17:51
	Flexi-Service F (KWS Naivasha)	(67.45)	(127.19)	(194.64)	0:45	
13C*	Flexi Service Out - Parc Fermé - In	-	-	-		(18:36)
	All cars must be returned to Parc Ferme no later than					21:51
Saturday Totals		134.90	254.38	389.28		
					Sunrise - Naivasha	06:35
					Sunset - Naivasha	18:38

* Early check-in permitted

Sunday 26 June 2022

THE GREAT KENYAN EXPERIENCE IN AFRICA

2022 SAFARI RALLY KENYA

2022 SAFARI RALLY

Version 1.1

Re-Start (Sections 6, 7 & 8)

Sunday 26 June 2022

TC	Location	SS Dist.	Liaison Dist.	Total Dist.	Target Time	First Car Due
SS		Km.	Km.	Km.		
13D	Parc Fermé - Out Service - In	-	-	-		06:00
	Service G (KWS Naivasha)	-	-	-	0:15	
13E	Service - Out	-	-	-		06:15
RZ 9	Refuel (FIA Fuel) - KWS Naivasha	-	-	-		
	<i>Distance to next refuel</i>	49.81	133.82	183.63		
14		-	37.74	37.74	0:47	07:02
SS 14	Oserian 1	17.81	-	-		07:05
15		-	30.58	48.39	0:58	08:03
SS 15	Narasha 1	21.47	-	-		08:12
16		-	20.50	41.97	0:50	09:02
SS 16	Hell's Gate 1 (Live TV)	10.53	-	-		09:08
16A	Regroup & Technical Zone - In	-	45.00	55.53	1:06	10:14
16B	Regroup Out & Service - In	-	-	-	0:10	10:24
	Service E (KWS Naivasha)	(49.81)	(133.82)	(183.63)	0:15	
16C	Flexi-Service - Out	-	-	-		10:39
RZ 10	Refuel (FIA Fuel) - KWS Naivasha	-	-	-		
	<i>Distance to next refuel</i>	49.81	134.28	184.09		
17		-	37.74	37.74	0:47	11:26
SS 17	Oserian 2	17.81	-	-		11:29
18		-	30.58	48.39	0:58	12:27
SS 18	Narasha 2	21.47	-	-		12:36
18A	Regroup & Technical Zone - In	-	18.90	40.37	0:48	13:24
18B	Regroup Out	-	-	-	0:46	14:10
19		-	2.06	2.06	0:05	14:15
SS 19	Hell's Gate 2 - Wolf Power Stage	10.53	-	-		14:18
19A	Technical Zone / Parc Ferme - In	-	45.00	55.53	1:06	15:24
	PODIUM	-	-	-		15:00
Sunday Totals		99.62	268.10	367.72		
					Sunrise - Naivasha	06:35
					Sunset - Naivasha	18:38

TOTALS OF THE RALLY					
	SS	Liaison	Total	%	
Thursday 24 June 2021	4.84	117.01	121.85	4.0%	
Section 1 - 1 SS					
Friday 25 June 2021	124.20	223.18	347.38	% of Special stages	35.8%
Section 2 & 3 - 6 SS					
Saturday 26 June 2021	134.90	254.38	389.28		34.7%
Sections 4 & 5 - 6 SS					
Sunday 27 June 2021	99.62	268.10	367.72		27.1%
Sections 6, 7 & 8 - 6 SS					
Total - 19 SS	363.56	862.67	1226.23		29.6%

Section 6

Section 7

Section 8



WRC SAFARI RALLY KENYA

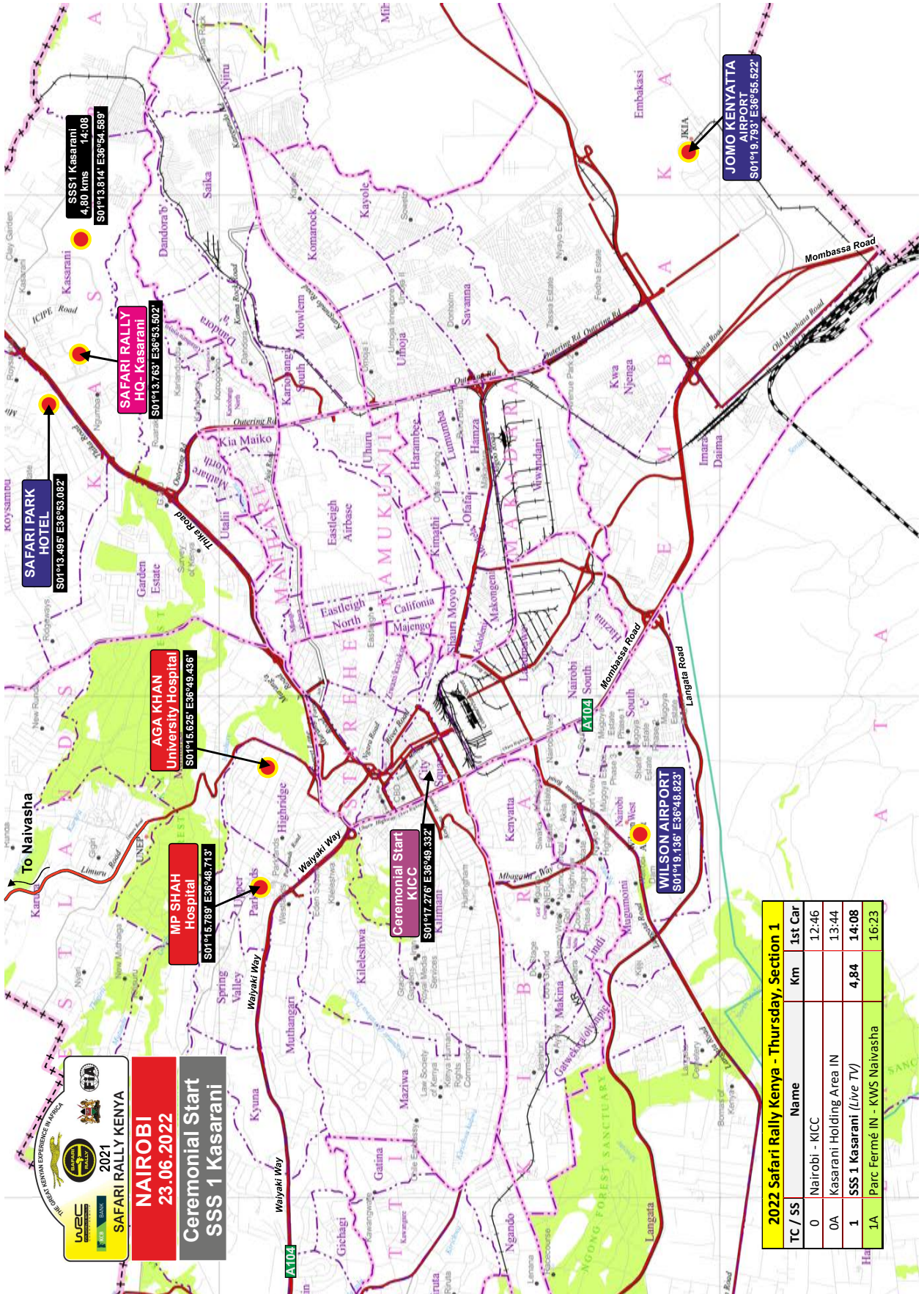


Appendix 2 Maps



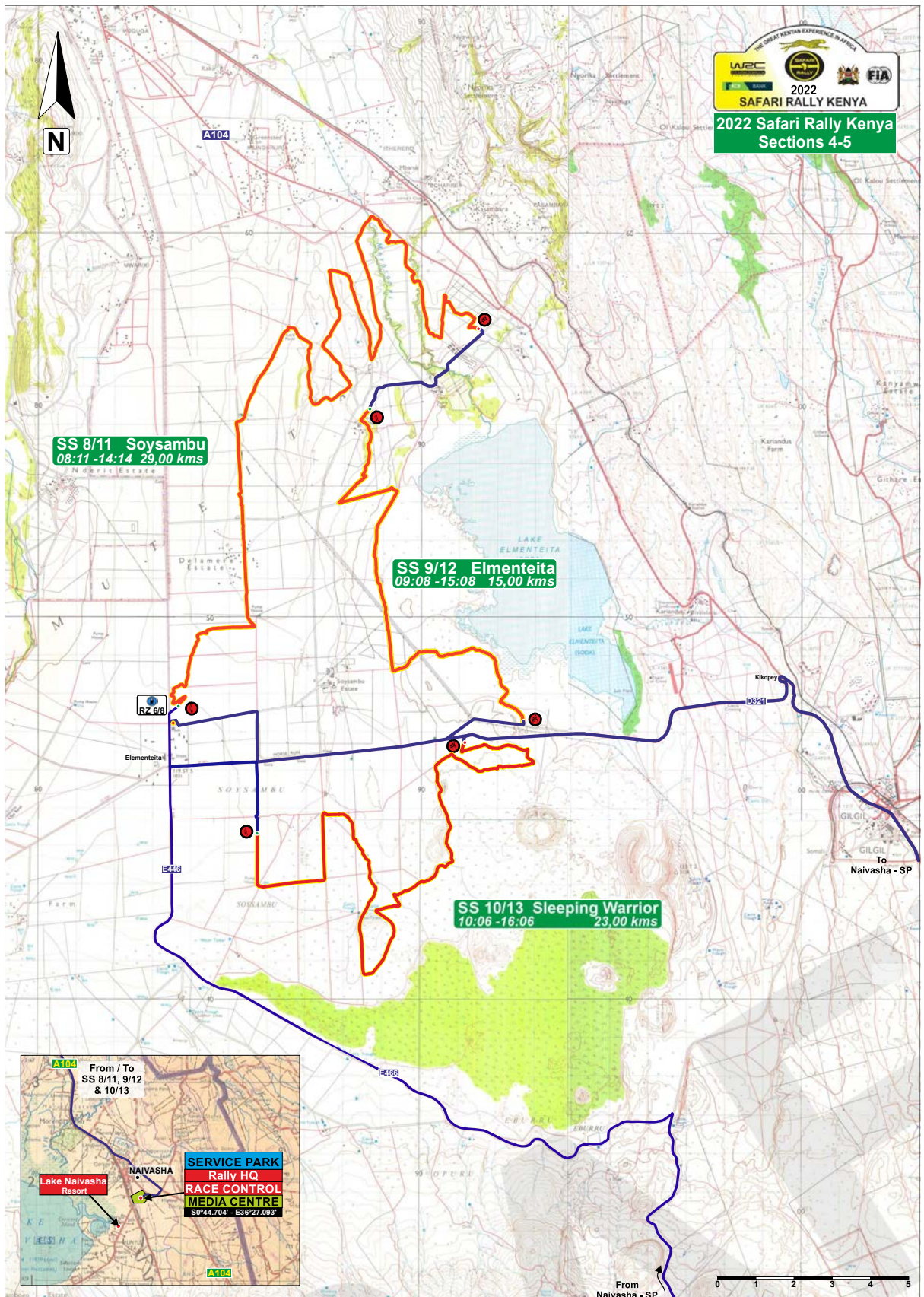


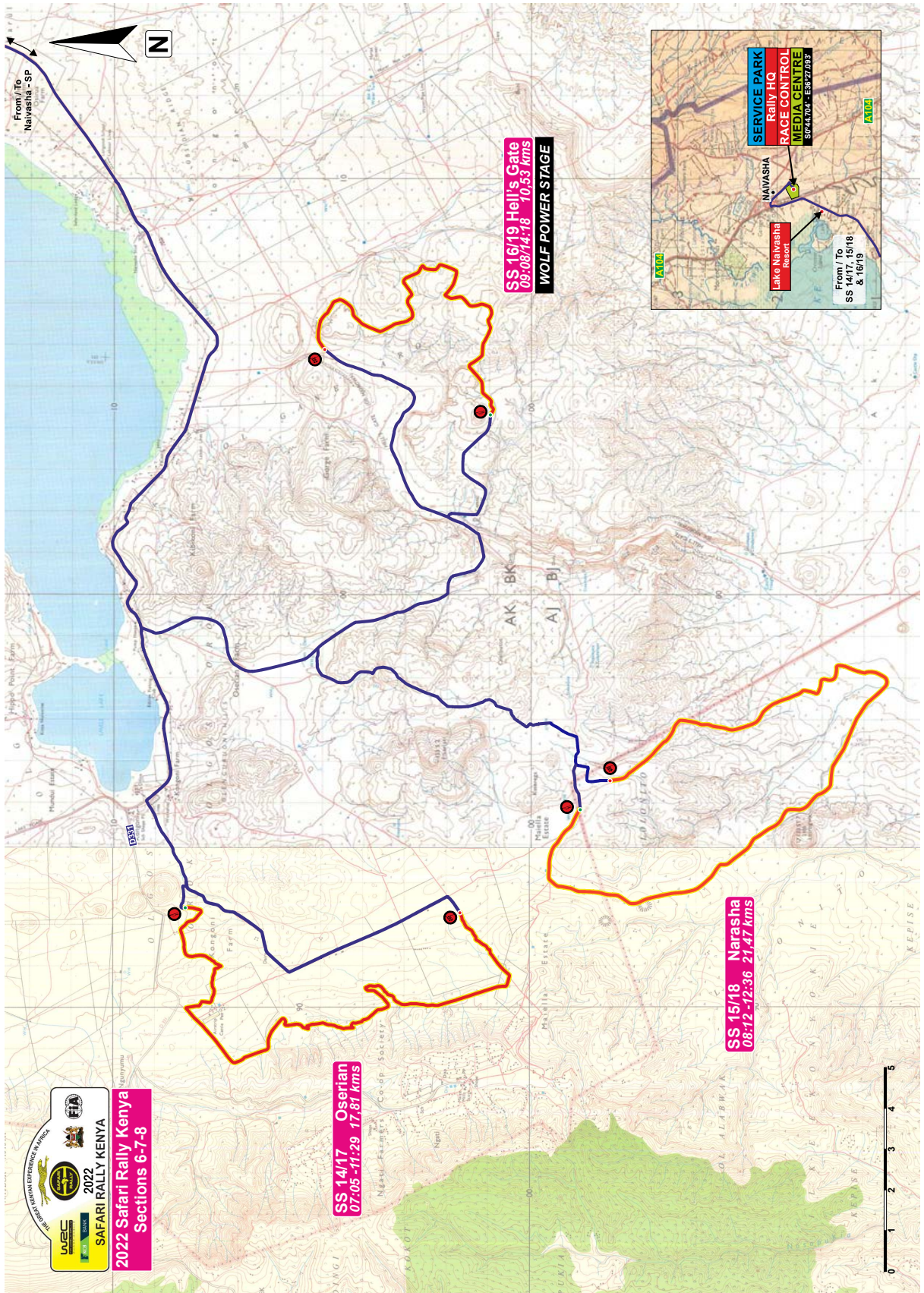




2022 Safari Rally Kenya - Thursday, Section 1				
TC / SS	Name	Km	1st Car	
0	Nairobi - KICC		12:46	
0A	Kasarani Holding Area IN		13:44	
1	SSS 1 Kasarani (Live TV)	4.84	14:08	
1A	Parc Fermé IN - KWS Naivasha		16:23	









WRC SAFARI RALLY KENYA



Appendix 3 Reconnaissance



2022 SAFARI RALLY				
RECONNAISSANCE SCHEDULE - Version 1.6				
Monday 20th June				
Opens		Closes	Stage	Kms
Priority 1 & 2	All Drivers			
07:00	09:30		SS 2/5 Loldia	19.17
		12:00	SS 2/5 Loldia	19.17
08:25	10:55		Shakedown - Loldia	5.41
		13:25	Shakedown - Loldia	5.41
09:50	12:20		SS 8/11 Soysambu	29.32
10:45	13:15		SS 9/12 Elementiata	15.08
		15:45	SS 9/11 Soysambu	29.32
12:25	14:55	15:45	SS 9/12 Elementiata	15.08
13:05	15:35		SS 10/13 Sleeping Warrior	23.05
		18:05	SS 10/13 Sleeping Warrior	23.05
Sunrise - Loldia		06:33		184.06
Sunset - Hellsgate		18:38		
Tuesday 21st June				
Opens		Closes	Stage	SS
7:00	09:30		SS 14/17 Oserian	17.81
		12:00	SS 14/17 Oserian	17.81
08:25	10:55		SS 15/18 Narasha	21.47
		13:25	SS 15/18 Narasha	21.47
10:40	13:10		SS 3/6 Geothermal	11.68
		15:40	SS 3/6 Geothermal	11.68
12:00	14:30		SS 16/19 Hells Gate	10.53
		17:00	SS 16/19 Hells Gate	10.53
13:10	15:40		SS 4/7 Kedong	31.25
		18:10	SS 4/7 Kedong	31.25
Sunrise - Oserian		06:34		185.48
Sunset - Kedong		18:37		
Thursday 23rd June				
Opens		Closes	Stage	SS
Schedule to be published in a Bulletin			SSS1 Kasarani	4.84
			SSS1 Kasarani	4.84
Sunrise - Kasarani		06:32		9.68



WRC SAFARI RALLY KENYA



Appendix 4 Forms



2022 WRC Safari Rally Kenya - Additional Plate / Document Order Form

Contact Details	
Contact Name	
Company / Team Name	
Tel No	
Email address	
Postal address	

	Price (USD)	Number Required	
Auxiliary Plate	500.00		Includes 3 Team Passes, 1 Route Map
Road Book (set)	100		

Total Payment Enclosed	
------------------------	--

Billing Information
Name: _____
Address: _____
VAT No.: _____

The completed registration form must be returned to the organisers email: info@safarirally.co.ke by Friday, 3rd June.

2022 WRC Safari Rally Kenya - Helicopter Registration Form

HELICOPTER

Registration	
Type and Make	
Colours	

OWNER

Company/Name	
Address	
Phone	

OPERATION

Purpose during the event	
Overnight parking location	

PILOT

Name	
Email address (all info via email)	
Address & Phone	
Address & Phone during the event	

FLYING UNDER CONTRACT FROM

Name	
Address & Phone	
Address & Phone during the event	

Registration fee: USD 2,750.00 (VAT included)

I, the pilot of the above helicopter, agree to follow the rules notified to me regarding the Rally

Payment should be done by Swift bank transfer

Bank:
Account name:
Account No:
IBAN
SWIFT:

SIGNATURE

The completed registration form must be returned to the organisers email: info@safarirally.co.ke by Friday, 10th June.

2022 WRC Safari Rally Kenya - Reconnaissance ONLY Registration Form

Any driver taking part in reconnaissance must respect the relevant regulations (see 2022 FIA WRC Sporting Regulations and 2022 WRC Safari Rally Kenya Supplementary Regulations).

The registration application will only be accepted if accompanied by the Reconnaissance Only fees.

Registration for reconnaissance will take place on Sunday 21st June 2022 between 10:00 -17:00 at the Rally Office, Service Park.

	Driver	Co-Driver
Surname:		
Name:		
Postal Address:		
Date of Birth:		
Mobile No.:		
Email Address:		
License No.:		
Issuing ASN:		
Driving License No.:		
Issuing Country		

Details of the car			
Make:		Registration No.:	
Model:		Colour:	

The undersigned acknowledge that they have duly read, understood and agree to be bound by the above terms and conditions

Driver:		Date:	
Co-Driver:		Date:	

The completed registration form must be returned to the organisers email: info@safarirally.co.ke by Friday, 10th June.

2022 WRC Safari Rally Kenya - Reconnaissance Registration Form

Any driver taking part in reconnaissance must respect the relevant regulations (see 2022 FIA WRC Sporting Regulations and 2022 WRC Safari Rally Kenya Supplementary Regulations).

Registration for reconnaissance will take place on Sunday 21st June 2022 between 10:00 -17:00 at the Rally Office, Service Park.

	Driver	Co-Driver
Surname:		
Name:		
Postal Address:		
Date of Birth:		
Mobile No.:		
Email Address:		
License No.:		
Issuing ASN:		
Driving License No.:		
Issuing Country		

Details of the car			
Make:		Registration No.:	
Model:		Colour:	

The undersigned acknowledge that they have duly read, understood and agree to be bound by the above terms and conditions

Driver:		Date:	
Co-Driver:		Date:	

The completed registration form must be returned to the organisers email: info@safarirally.co.ke by Friday, 10th June.

2022 WRC Safari Rally Kenya - Shakedown Registration Form

CAR NUMBER

COMPETITOR INFORMATION	
Driver	
Co-Driver	
Mobile phone	
Team contact person	
Mobile phone	

DETAILS OF THE CAR	
Make and model	
Registration No.	
Colour	

DATE	SIGNATURE

The completed registration form must be returned to the organisers email: info@safarirally.co.ke by Monday, 13th June.

v1.0

Facilities requested in the Service Park					
Event rental	Price	Delivery	Collect	No. of	Total
Daily rental	Price	Delivery	Collect	No. of	Total
Other type of equipment, contact: servicepark@safarirally.co.ke					

The completed registration form must be returned to the organisers email: servicepark@safarirally.co.ke by Monday, 13th June.