




Thursday 9 March 2023

RALLY GUIDE 1

THE GREAT KENYAN EXPERIENCE IN AFRICA


SAFARI RALLY KENYA 2023

June 22nd-June 25th



SAFARI RALLY KENYA

www.safarirally.co.ke



SIGN UP | SAVE LIVES | STAY SAFE

<p>BUCKLE UP FERNANDEZ ALONSO <small>First driver to wear a seat belt in 1955</small></p> 	<p>USE A CHILD SAFETY SEAT MICHELLE YEOH <small>WORLD RALLY CHAMPION</small></p> 	<p>NEVER DRINK AND DRIVE NIER ROSBERG <small>WORLD RALLY CHAMPION</small></p> 	<p>SLOW DOWN FOR KIDS FINTRIX REMISEY <small>WORLD RALLY CHAMPION</small></p> 
<p>CHECK YOUR TYRES KAZEL HABIL <small>WORLD RALLY CHAMPION</small></p> 	<p>OBEY THE SPEED LIMIT YOHAN BLADE <small>WORLD RALLY CHAMPION</small></p> 	<p>DON'T TEXT AND DRIVE PATRICK WILLIAMS <small>WORLD RALLY CHAMPION</small></p> 	<p>LOOK BEFORE CROSSING FELIPE MASSA <small>WORLD RALLY CHAMPION</small></p> 
<p>STOP WHEN YOU'RE TIRED ANTYONE GRESMANN <small>WORLD RALLY CHAMPION</small></p> 	<p>MAKE ROAD SAFETY A PRIORITY ANNE HIBALDO <small>WORLD RALLY CHAMPION</small></p> 	<p>ALWAYS PAY ATTENTION HANESSA LOW <small>WORLD RALLY CHAMPION</small></p> 	<p>STAY BRIGHT HAILE GEMSELASSIE <small>WORLD RALLY CHAMPION</small></p> 
<p>CHECK YOUR VISION MICHAEL KRZYSZTOF</p> 	<p>DON'T LET YOUR FRIENDS DRIVE DRUNK WAIDE VAN HEEREN <small>WORLD RALLY CHAMPION</small></p> 	<p>WEAR A HELMET MARC MARQUEZ <small>WORLD RALLY CHAMPION</small></p> 	

SUPPORT THE FIA'S MANIFESTO FOR GLOBAL ROAD SAFETY AT **FIA.COM**

#3500LIVES



1 Introduction	4	5.12 Power	
1.1 Welcome Note from the Organisers		6 Two-Way Radio	31
1.2 The 2022 Event in Brief		7 Fuel / Tyres	32
1.3 Route changes 2023 / 2022		7.1 Fuel and Refuelling	
1.4 Past Winners		7.2 Tyres	
2 Contact Details	15	8 Import of Vehicles and Spare Parts	32
2.1 Permanent contact details (Permanent Secretariat)		8.1 Customs Clearance	
2.2 Key Officials		8.2 Inland Logistics Procedure	
2.3 Rally Contact Details		8.3 Passengers Arriving in Kenya	
2.4 Media Contact Details		8.4 Payments	
3 Programme and Critical Deadlines	17	8.5 Visas	
3.1 Schedule Before the Rally Week		9 Helicopters	38
3.2 Schedule During the Rally Week		9.1 Helicopter Registration	
4 Entry Details	25	9.2 Helicopter Charter Companies	
4.1 Entry Procedure		10 Hospitality Arrangements	39
4.2 Titles for Which the Rally Counts		11 Hotel/Accommodation Reservation	39
4.3 Criteria for Acceptance of Entry		12 Reconnaissance	39
4.4 Entry Fees		12.1 Duration and Schedule	
4.5 Entry Package for Non FIA Registered Teams		12.2 Registration	
5 Service Park	28	12.3 Reconnaissance Procedure	
5.1 Service Park Location		13 Strutineering, Sealing and Marking	40
5.2 Service Area		14 Shakedown	40
5.3 Access to Service Park		14.1 Shakedown Location	
5.4 Facilities		15 Media	40
5.5 Security and Medical Services		15.1 Contacts Before the Rally	
5.6 Promotional Stands		15.2 National Publications, National Photographers, National Websites and National Radio Stations	
5.7 Traffic Movements		15.3 Media Reconnaissance	
5.8 Environmental Requirements		16 Medical & Safety Services	43
5.9 Service Park Manager		16.1 Hospitals	
5.10 Recovery of Retired Cars		17 List of Useful Facts and Services	43
5.11 Retirements and Re-starts			

Appendix 1- Itinerary

Appendix 2- Maps

Appendix 3- Reconnaissance Schedule

Appendix 4- Forms

1.INTRODUCTION

1.1 Welcome Note from the Organisers

**Cabinet Secretary for Youth Affairs, Sports and the Arts.
Chairman of WRC Safari Rally Steering Committee**



With great pleasure and pride, I welcome the World Rally Championship (WRC) 2023 to our magical country, Kenya. I have avidly followed the incredible growth of this premier global motorsport event with a keen sense of interest, more so when it's the WRC Safari Rally flag off day! The 2023 Safari Rally is particularly special as it marks the 70th anniversary of this deeply cherished Kenyan heritage. We have also deliberately and intentionally structured all the rally-related activities to be in sync with the

Bottom-Up Economic Transformation Agenda (BETA) of the government of Kenya.

The world's top rally drivers will be confronted by a route that demands the very best in perseverance, tenacity and technical skill. Against the backdrop of Kenya's natural beauty, this year's rally promises to be one of the most unforgettable events of its kind. We are thrilled to be able to showcase our national heritage in all its glory, and we welcome you to experience it firsthand as you also sample the adrenaline thrills and spills of our Sports Safari.

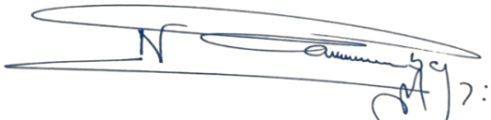
Furthermore, the WRC Safari Rally 2023 is an important step in promoting sustainable transportation and reducing our carbon footprint. The event is ushering in the era of hybrid-powered vehicles, which are more energy-efficient and eco-friendly than traditional gasoline-powered cars. The Kenyan government has pledged to plant 15 billion trees over the next 10 years, and this event is an opportunity for our country to highlight the importance of this initiative by addressing issues related to climate change, in particular SDG 13.

I warmly invite everyone to participate in this incredible event that is so well spiced by the beautiful cocktail of Kenyan flavours and hospitality. As we celebrate our national heritage and showcase the unique talents of our youth,

safety and responsible behavior must be our top priority. I urge everyone to take ownership of their safety and extend their collective experience to those around them, ensuring that we all stay safe while enjoying the world's toughest rally.

Karibuni Kenya, the land of Hakuna Matata!

Sincerely,



**HON. ABABU NAMWAMBA, EGH
CABINET SECRETARY**



Hon. JONATHAN MUEKE
Principal Secretary
State Department for Sports
Ministry of Youth Affairs, the Arts and Sports

Kenya is recognized Globally as a sporting powerhouse; from its world conquering Athletes to staging world class sporting events which exhibit excitement and competitive adventure, within the globally acclaimed demographic landscape, widely considered as one the most hospitable destinations in the World.

It is therefore with a great sense of pride and privilege that I welcome all the WRC Teams to our shores and to the World's Toughest Rally – the WRC Safari Rally Kenya 2023. The event, which is staged within the terrains of the Great Rift Valley around the Lake Naivasha ecosystem, will offer tremendous opportunities for guests to experience the best of Kenyan hospitality and hopefully, some time to visit some of our wildlife sanctuaries, where wild animals roam freely in their natural habitat.

We offer our greatest assurance to the competitors and spectators alike, that just as it was in the previous editions, this year's Safari Rally, will be an all-round, action filled, fun packed extravaganza, which has become the hallmark of the Rally.

We are all waiting for the Safari Rally to kick off once again, as it has firmly become an integral element of our national heritage, thanks to the excitement it brings to all Kenyans, across the various social strata.

Kenya and the Kenyan people can't wait to welcome you once more to this year's edition of the Safari Rally.

KARIBU KENYA.

Jonathan Mueke



The Safari Rally has been an intrinsic part of the sporting heritage of East Africa. It was first held from May 27th to the June 1st 1953, as the East African Coronation Safari, running through Kenya, Uganda and Tanganyika, as a celebration of the coronation of Queen Elizabeth II.

Some 20 years later, in 1973, the East African Safari Rally became the Safari Rally and joined the FIA World Rally Championship series.

The Safari Rally ran successfully as one of the toughest rallies of the FIA World Rally Championship from 1973 (with Shekhar Mehta and Lofty Drews guiding their Datsun 240Z to victory) to 2002 with a famous victory for Colin McRae and Nicky Grist in a Ford Focus on the 50th edition of the event.

The year 2003 saw the exit of the Safari Rally from the WRC, and was off the circuit for the next 19 years. But in July, 2019, the 67th

edition of the Safari Rally was run as a WRC Candidate Rally, with the anticipatory hopes of a nation clinging on for a successful re-entry into what is today, a premier motorsport series, watched and followed by hundreds of millions of eager fans around the world. In September 27, 2019, the Safari Rally was readmitted into the WRC series calendar, starting with the 2021 rally.

Today, I am proud and honoured to say that the endless months of relentless work put in by the organising team in 2021 and 2022 resulted in a WRC event befitting its historical name - full of drama, excitement and surprises!

In 2022, the Hybrid WRC1 cars made their Championship debut.

With change comes challenge and this year will be no different in terms of the competition. With the return of the short, Malewa Stage and deviations from the deep dust pans of Kedong, the new crop of WRC rally cars are in for an action-packed rally week with the top challengers all aiming to conquer the most unpredictable of rallies on the WRC calendar.

Kenya welcomes you to the 2023 FIA World Rally Championship, and to the 2023 WRC Safari Rally!

Carl Tundo
Chairman of the Organising Committee
WRC Safari Rally Kenya

Winner of the Safari Rally in 1995, 2004, 2009, 2011, 2012 and 2018
Winner FIA Africa Rally Champion 2021

Carl "Flash" Tundo (born 11 December 1973 in Nairobi) is a rally driver from Kenya. He is a five times winner of the Safari Rally. In 2009 it was a round of the Intercontinental Rally Challenge, making Tundo the first and only Kenyan winner of an IRC round. His co-driver has been Tim Jessop since 2002. The son of Kenyan rally driver Frank Tundo, Flash has competed in the WRC Safari Rally, in 1995, 2002, 2021 and in 2022

THE SAFARI RALLY HISTORY



The Safari Rally was first held in 1953, as the East African Coronation Safari in Kenya, Uganda and Tanganyika, as in celebration of the coronation of Queen Elizabeth II.

In 1960 it was renamed the East African Safari Rally and maintained that name until 1974, when it became the Kenya Safari Rally. Widely regarded as one of the most popular African rallies. It made its return to the World Rally Championship (WRC) in 2021 after a 19-year hiatus.



The older version of the Safari Rally was notorious for being the most difficult rally in the World championship. Some had said that winning this particular rally was the equivalent of winning three other rallies. The arduous conditions, such as the constantly changing weather and the very rough roads often made life very difficult for team personnel. Repairs were constantly having to be made to the cars, which added to the elapsed time of the competitors. Frequently, all this work had to be done in intense heat and humidity.

The event adopted the special stage format in 1996. From that edition until 2002, it featured over 1000 km of timed stages, with stages well over 60 kilometers long, unlike most rallies which had under 500 kilometers of total timed distance.



The event exited from the WRC calendar in 2003. Since then the event has been part of the FIA African Rally Championship, organized by Kenya Motorsports Federation. The 2021 and 2022 events ran successfully in the relatively drier month of June, confirming it's rightful place amongst the greatest WRC events in the world.

The world was intrigued as to how Safari Rally would fit into a modern WRC with shorter stages, a central service park and restricted overall distance whilst capturing the essence of a Safari Rally '21 and '22 became the most watched events of the WRC with a mind boggling worldwide audience stamping their approval on the 'new' Safari Rally.



The 2023 Safari Rally Location: Naivasha

The original name of Naivasha is drawn from the Maasai dialect, “Nai Posha,” which means “Rough Water.” It was used to refer to the frequent storms that would frequent Lake Naivasha. Naivasha is 95 kilometres west of Nairobi and is accessible by road.

Recently, the standard gauge railway (SGR) was extended from Nairobi to Naivasha. With the Kenya Ports Authority having recently set up an Inland Container Depot in Naivasha, it means cargo can now be transported by rail from the port of Mombasa all the way to Naivasha. By 2030 Kenya aims to have 5,530 MW of geothermal power or 51% of total capacity. This will make it Kenya’s largest source of clean electricity. Kenya is the leading producer of geothermal energy on the African continent and 8th in the world.

The Nation has helped set a valuable precedent for building green infrastructure and implementing sustainable poverty-reduction efforts. Kenya is a holiday destination for many reasons. There are tourists who come to Kenya for the sunny beaches, for the culture and others for our wildlife.

Kenya is home to the big five and it would be such a sad story for one to come to Kenya and not take time to go see them. It is even a sadder state of affairs if you are Kenyan and have never taken time to go see what others travel air-miles to see.



1.2 The 2023 Event in Brief

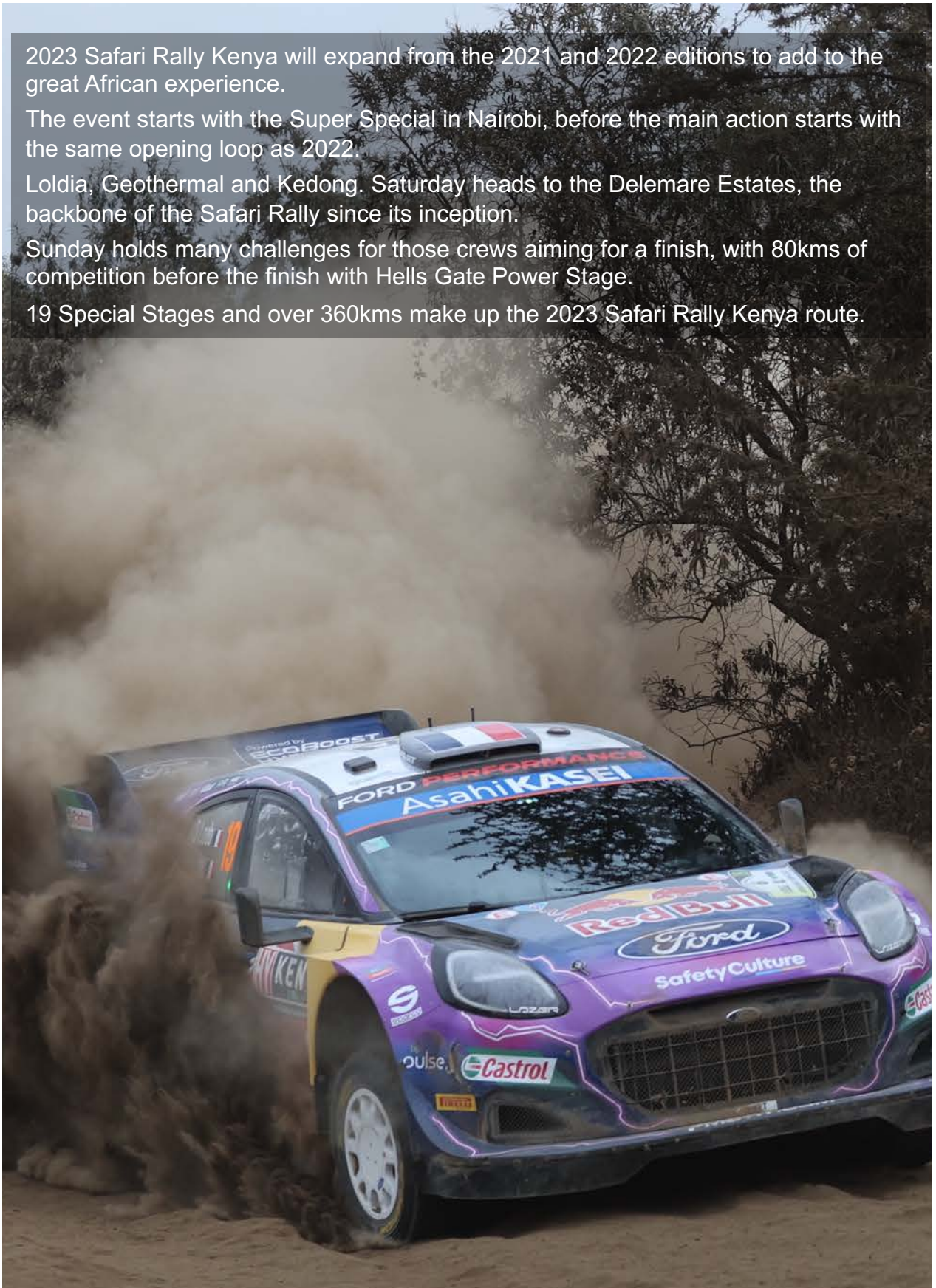
2023 Safari Rally Kenya will expand from the 2021 and 2022 editions to add to the great African experience.

The event starts with the Super Special in Nairobi, before the main action starts with the same opening loop as 2022.

Loldia, Geothermal and Kedong. Saturday heads to the Delemare Estates, the backbone of the Safari Rally since its inception.

Sunday holds many challenges for those crews aiming for a finish, with 80kms of competition before the finish with Hells Gate Power Stage.

19 Special Stages and over 360kms make up the 2023 Safari Rally Kenya route.



1.3 Route Changes 2023 / 2022

Route changes 2023 / 2022						
Special Stages	SS			2023/2022		
	Nr	Length	Total	Similar	Opposite	New
Wednesday						
Shakedown		5.41		5.41		
Thursday						
SS1	1	4.84	4.84	4.84		
Friday						
SS 2 / 5	2	19.17	38.34	11.95		
SS 3 / 6	2	13.8	27.60	11.95		1.85
SS 4 / 7	2	30.65	61.30	29.75		0.9
Saturday						
SS 8 / 11	2	29.32	58.64	29.32		
SS 9 / 12	2	15.08	30.16	15.08		
SS 10 / 13	2	23.05	46.10	23.05		
Sunday						
SS 14 / 17	2	11	22.00	11		11
SS 15 / 18	2	18.33	36.66	17.03		1.3
SS 16 / 19	2	10.53	21.06	10.53		
Totals	19	175.77	346.70	164.5	0	15.05

1.4 Past Winners

Past Winners

Year	Rally Name	Winning Driver	Co-driver	Winning Car
1953	1 st Coronation Safari Rally	 Alan Dix	 Johnny Larsen	Volkswagen Beetle
1954	2 nd Coronation Safari Rally	 D P Marwaha	 Vic Preston Sr	Volkswagen Beetle
1955	3 rd Coronation Safari Rally	 Vic Preston Sr	 D P Marwaha	Ford Zephyr
1956	4 th Coronation Safari Rally	 Eric Cecil	 Tony Vickers	DKW
1957	5 th Coronation Safari Rally	 Gus Hofmann	 Arthur Burton	Volkswagen Beetle
1958	6 th Coronation Safari Rally	 T. Brooke	 Peter Hughes	Ford Anglia100E
		 Arne Kopperud	 Kora Kopperud	Ford Zephyr II
		 Morris Temple-Boreham	 Mike Armstrong	Auto Union1000
1959	7 th Coronation Safari Rally	 Bill Fritschy	 Jack Ellis	Mercedes-Benz 219
1960	8 th East African Safari Rally	 Bill Fritschy	 Jack Ellis	Mercedes-Benz 219
1961	9 th East African Safari Rally	 John Manussis	 Bill Coleridge	Mercedes-Benz 220SE
			 David Bekett	
1962	10 th East African Safari Rally	 Tommy Fjastad	 Bernhard Schmider	Volkswagen 1200
1963	11 th East African Safari Rally	 Nick Nowicki	 Paddy Cliff	Peugeot 404
1964	12 th East African Safari Rally	 Peter Hughes	 Bill Young	Ford CortinaGT
1965	13 th East African Safari Rally	 Joginder Singh	 Jaswant Singh	Volvo PV 544
1966	14 th East African Safari Rally	 Bert Shankland	 Chris Rothwell	Peugeot 404
1967	15 th East African Safari Rally	 Bert Shankland	 Chris Rothwell	Peugeot 404
1968	16 th East African Safari Rally	 Nick Nowicki	 Paddy Cliff	Peugeot 404
1969	17 th East African Safari Rally	 Robin Hillyar	 Jock Aird	Ford Taunus 20M RS
1970	18 th East African Safari Rally	 Edgar Herrmann	 Hans Schüller	Datsun 1600 SSS
1971	19 th East African Safari Rally	 Edgar Herrmann	 Hans Schüller	Datsun 240Z
1972	20 th IMC East African Safari Rally	 Hannu Mikkola	 Gunnar Palm	Ford EscortRS1600
1973	21 st WRC East African Safari Rally	 Shekhar Mehta	 Lofty Drews	Datsun 240Z
1974	22 nd WRC East African Safari Rally	 Joginder Singh	 David Doig	Mitsubishi Lancer 1600 GSR
1975	23 rd WRC Safari Rally	 Ove Andersson	 Arne Hertz	Peugeot 504
1976	24 th WRC Safari Rally	 Joginder Singh	 David Doig	Mitsubishi Lancer 1600 GSR
1977	25 th WRC Safari Rally	 Björn Waldegård	 Hans Thorszelius	Ford EscortRS1800
1978	26 th WRC Safari Rally	 Jean-Pierre Nicolas	 Jean-Claude Lefèbvre	Peugeot 504 V6 Coupé
1979	27 th WRC Safari Rally	 Shekhar Mehta	 Mike Doughty	Datsun 160J
1980	28 th WRC Safari Rally	 Shekhar Mehta	 Mike Doughty	Datsun 160J
1981	29 th WRC Safari Rally	 Shekhar Mehta	 Mike Doughty	Nissan Violet GT
1982	30 th WRC Marlboro Safari Rally	 Shekhar Mehta	 Mike Doughty	Nissan Violet GT
1983	31 st WRC Marlboro Safari Rally	 Ari Vatanen	 Terry Harryman	Opel Ascona 400
1984	32 nd WRC Marlboro Safari Rally	 Björn Waldegård	 Hans Thorszelius	Toyota Celica TCT
1985	33 rd WRC Marlboro Safari Rally	 Juha Kankkunen	 Fred Gallagher	Toyota Celica TCT
1986	34 th WRC Marlboro Safari Rally	 Björn Waldegård	 Fred Gallagher	Toyota Celica TCT
1987	35 th WRC Marlboro Safari Rally	 Hannu Mikkola	 Arne Hertz	Audi 200 Quattro
1988	36 th WRC Marlboro Safari Rally	 Miki Biasion	 Tiziano Siviero	Lancia Delta HF Integrale

1991	39 th WRC Martini Safari Rally	 Juha Kankkunen	 Juha Piironen	Lancia Delta HF Integrale 16v
1992	40 th WRC Martini Safari Rally	 Carlos Sainz	 Luis Moya	Toyota Celica Turbo 4WD
1993	41 st WRC Trust Bank Safari Rally	 Juha Kankkunen	 Juha Piironen	Toyota Celica Turbo 4WD
1994	42 nd WRC Trust bank Safari Rally	 Ian Duncan	 David Williamson	Toyota Celica Turbo 4WD
1995	43 rd 2LWC Safari Rally	 Yoshio Fujimoto	 Arne Hertz	Toyota Celica Turbo 4WD
1996	44 th WRC Safari Rally	 Tommi Mäkinen	 Seppo Harjanne	Mitsubishi Lancer Evolution III
1997	45 th WRC Safari Rally	 Colin McRae	 Nicky Grist	Subaru Impreza WRC97
1998	46 th WRC Safari Rally	 Richard Burns	 Robert Reid	Mitsubishi Carisma GT Evo IV
1999	47 th WRC Safari Rally	 Colin McRae	 Nicky Grist	Ford Focus WRC
2000	48 th WRC Sameer Safari Rally	 Richard Burns	 Robert Reid	Subaru Impreza WRC
2001	49 th WRC Safari Rally	 Tommi Mäkinen	 Risto Mannisenmäki	Mitsubishi Lancer Evolution 6.5
2002	50 th WRC Inmarsat Safari Rally	 Colin McRae	 Nicky Grist	Ford Focus RS WRC 02
2003	51 st ARC KCB Safari Rally	 Glen Edmunds	 Titch Phillips	Mitsubishi Lancer Evolution VI
2004	52 nd ARC KCB Safari Rally	 Carl Tundo	 Tim Jessop	Subaru Impreza
2005	53 rd ARC KCB Safari Rally	 Glen Edmunds	 Des Page-Morris	Mitsubishi Lancer Evolution VII
2006	54 th ARC KCB Safari Rally	 Azar Anwar	 George Mwangi	Mitsubishi Lancer Evolution VI
2007	55 th IRC/ARC KCB Safari Rally	 Conrad Rautenbach	 Peter Marsh	Subaru Impreza N10
2008	56 th ARC KCB Safari Rally	 Lee Rose	 Piers Daykin	Mitsubishi Lancer Evolution IX
2009	57 th IRC/ARC KCB Safari Rally	 Carl Tundo	 Tim Jessop	Mitsubishi Lancer Evolution IX
2010	58 th ARC KCB Safari Rally	 Lee Rose	 Piers Daykin	Mitsubishi Lancer Evolution IX
2011	59 th ARC KCB Safari Rally	 Carl Tundo	 Tim Jessop	Mitsubishi Lancer Evolution IX
2012	60 th ARC KCB Safari Rally	 Carl Tundo	 Tim Jessop	Mitsubishi Lancer Evolution IX
2013	61 st ARC KCB Safari Rally	 Baldev Chager	 Ravi Soni	Mitsubishi Lancer Evolution X
2014	62 nd ARC KCB Safari Rally	 Baldev Chager	 Ravi Soni	Mitsubishi Lancer Evolution X
2015	63 rd KNRC KCB Safari Rally	 Chatthe Jaspreet	 Panesar Gurdeep	Mitsubishi Lancer Evolution X R4
2016	64 th KNRC KCB Safari Rally	 Chatthe Jaspreet	 Panesar Gurdeep	Mitsubishi Lancer Evolution X R4
2017	65 th ARC/KNRC Safari Rally	 Tapio Laukkanen	 Gavin Laurence	Subaru Impreza WRX STi 4 D R4
2018	66 th ARC/KNRC Safari Rally	 Carl Tundo	 Tim Jessop	Mitsubishi Lancer Evolution X
2019	67 th ARC/KNRC Safari Rally	 Baldev Chager	 Ravi Soni	Mitsubishi Lancer Evolution X R4
2020	68 th WRC Safari Rally	POSTPONED COVID-19		
2021	69 th WRC Safari Rally	 Sébastien Ogier	 Julien Ingrassia	Toyota Gazoo Racing
2022	70 th WRC Safari Rally	 Kalle Rovenpera	 Jonne Halttunen	Toyota Gazoo Racing

Notes:

IMC = International Championship for Manufacturers,

WRC = World Rally Championship,

2LWC = 2-Litre World Cup,

ARC = African Rally Championship,

IRC = Intercontinental Rally Challenge,

KNRC = Kenya National Rally Championship

2. Contact Details

2.1 Permanent contact details (*Permanent Secretariat*)

WRC Safari Rally

Moi International Sports Centre,

Kasarani, Thika Road,

Nairobi, Kenya.

Telephone: +254 710 692 777 / +254 710 694 441

Email: info@safarirally.co.ke

S1°13'49.51" E36°53'36.42"

Website: www.safarirally.co.ke

Facebook: www.facebook.com

Twitter: #WRCsafarirallyKE

	Name
Event Director	
Clerk of the Course	Gurvir Bhabra
Deputy Clerk of the Course(s)	George Mwangi
	Nazir Yakub
	Onkar Kalsi
Assistant Clerk of the Course(s)	Darshak Patel
	George Njoroge
Route Liaison / Media Safety	Anwar Sidi
Secretary of the Event	Hellen Kagendo
Assistant to the Stewards Secretary	Wambui Kiiru
Chief Safety Officer:	Norris Ongala
Scrutineers (Chief Scrutineer)	Musa Locho
Chief Medical Officer (CMO)	Dr Raj Jutley
Timekeeping (Chief Timekeeper)	Darash Patel
Competitors' Relations Officer (CRO)	Joan Nesbitt
	Jenny Dance
Chief Controller	Harjit Sagoo
Press Officer	Elias Makori
Environmental Officer	Peris Njoroge
Chief Security Officer	Comm. Julius Kabiru
Security & Traffic Liaison	Deven Jadeja
Service Park Manger	Joel Muchiri
Rally Control Manager	Viral Jadeja
Chief Communications Officer	Deepak Dhodia

2.3 Contact Details

Safari Rally Service Park, Naivasha

c/o Wildlife Research Training Institute (WRTI)
P.O. Box Private Bag, Kasarani
Telephone: +254 710 692 777 / +254 710 694 441
info@safarirally.co.ke
S 0°44'1.58" E 36°27'9.54"

WRC Safari Rally (Permanent Office)

Moi International Sports Centre,
Kasarani Thika Road,
Nairobi, Kenya.
Telephone: +254 710 692 777 / 710 694 441
Email: info@safarirally.co.ke
Websight: www.safarirally.co.ke.

2.4 Media Contact Details

Media Office (Permanent Rally Office)

WRC Safari Rally Kenya
Moi International Sports Centre, Kasarani
P.O. Box Private Bag, Kasarani
Thika Road, Nairobi, Kenya
Telephone: +254 710 692 777 / 710 694 441
Email: media@safarirally.co.ke
Website: www.safarirally.co.ke

Media Office (During the event)

Wildlife Research Training Institute (WRTI), Service Park, Naivasha
Telephone: +254 710 693 535 / 798 980 058
Email: media@safarirally.co.ke

3. Programme and Critical Deadlines

3.1 Schedule before Rally Week

Monday 20 February		
	Publication of Rally Guide 1	Website
Monday 13 March		
	Portal for ordering fuel opens	P1 Performance Fuel
Thursday 13 April		
	Final date to notify fuel requirements.	P1 Racing Fuel
	Final date to notify tyre requirements	Pirelli
Saturday 22 April		
	Publication of Supplementary Regulations	Website
	Opening Date of Entries	
Monday 22 May		
	Final date to receive import papers	Permanent Secretariat
	Closing date for entries (GMT -1800hrs)	Permanent Secretariat
	Issuing of the Road Book	Permanent Secretariat / Courier
	Publication of Rally Guide 2	Website
Monday 5 June		
	Final date to order extra material	Permanent Secretariat
	Final date for Shakedown registration (except P1)	Permanent Secretariat
	Final date for submitting Joint Service Request form	Permanent Secretariat
Friday 16 June		
10:00	Opening of Service Park for Teams	Service Park, Naivasha

3.2 Schedule During The Week

Sunday 18 June		
10:00 - 18:00	Rally Office opening hours	Service Park
10:00 - 13:00	Administrative checks and collection of materials and documents for non-priority drivers (Schedule to be published)	Rally Office
12:00 - 18:00	Media Accreditation (for recce only)	Rally Office
13:00 - 18:00	Administrative checks for P1 and P2 Competitors. (Schedule to be published in a Bulletin)	Rally Office
20:00	Deadline for all new drivers and co-drivers to have completed the FIA e-learning course on the WRC Tracking System	
Monday 19 June		
06:30 - 18:00	Rally Office opening hours	Service Park
07:00 - 18:05	Reconnaissance Day 1	See Appendix 2
10:00 - 12:00	Collection of FIA Safety Trackers	SAS Workshop Service Park

Tuesday 20 June		
07:00 - 20:00	Rally Office opening hours	Service Park
07:00 - 18:30	Reconnaissance Day 2	See Appendix 2
08:00 - 11:00	Sealing & Marking for Manufacturers (Schedule to be published in a Bulletin)	Service Park (individual service bays)
11:00 - 12:00	Weight Checks for Manufacturers	Service Park
13:30 - 20:00	Scrutineering / Component Sealing for WRC2, WR3 and Non-priority drivers (Schedule to be published in a bulletin)	Service Park
14:00 - 19:00	Media Centre / Media Accreditation Centre open	Service Park
16:00	Team Managers' meeting (Manufacturer Teams)	Service Park Pavillion
17:00	Publishing of Shakedown Start list (P1 and invited crews)	ONB
18:00	Helicopter Pilot's Briefing	Via Zoom
17:00	Tabard Media Safety Briefing	Photographers room, Service Park
19:00	Drivers Safety briefing - Driver and co-drivers required to attend will be notified in a bulletin	Service Park Pavillion
19:30	Safari Rally Welcome Cocktail- All Drivers (Compulsory)	Service Park Pavillion
Wednesday 21 June		
08:00 - 18:30	Rally Office opening hours	Service Park
10:01 - 12:00	Shakedown for P1 and invited Drivers	
11:30 - 13:00	FIA P2 & P3 drivers.	Loldia
13:00 - 14:00	Non-priority Drivers	
10:00 - 14:00	Scrutineering / Component Sealing for Non-Priority drivers (Schedule to be published)	Service Park
13:00	Meet the crews	Media Centre. Service Park
13:30	FIA Pre-Event Press Conference	Media Centre. Service Park
14:15	Tree Planting for Drivers	Service Park
15:00	Publishing of Start List for Section 1 & 2	ONB
15:30	Extrication Training	Service Park

Thursday 22 June		
08:00 - 19:30	Rally Office open	Service Park
10:00 to a specific schedule	Reconnaissance of SSS1 Kasarani	Kasarani, Nairobi
11:15	Press conference for all P1 crews with local media	Uhuru Park, Nairobi
11:30	Autograph session	Uhuru Park, Nairobi
11:45	WRC Family photo	Uhuru Park, Nairobi
11:50	P1 crews meet the President	Uhuru Park, Nairobi
12:15	Presidential and VIP speeches	Uhuru Park, Nairobi
12:46	First car leaves TC0	Uhuru Park, Nairobi
14:00	President arrival at Super Special (SS1)	Kasarani, Nairobi
14:05	Start of Super Special (SS1)	Kasarani, Nairobi
Friday 23 June		
07:30 - 22:00	Opening of Rally Office	Service Park, Naivasha
07:00	Start of Section 2	Service Park, Naivasha
08:00 - 22:00	Opening of Media Centre	Service Park, Naivasha
21:00	Publication of Start List for Section 4	Official Notice Board
Saturday 25 June		
06:00 - 22:00	Opening of Rally Office	Service Park, Naivasha
20:00	Start of Section 4	Service Park, Naivasha
08:00 - 22:00	Opening of Media Centre	Service Park, Naivasha
21:30	Publication of Start List for Section 6	Official Notice Board
Sunday 26 June		
06:00 - 18:00	Opening of Rally Office	Service Park, Naivasha
06:20	Start of Section 6	Service Park, Naivasha
08:00 - 20:00	Opening of Media Centre	Service Park, Naivasha
14:15	Start of Power Stage	Hells Gate, Naivasha
15:30	Finish Podium Ceremony	Service Park, Naivasha
16:15	Final Scrutineering	Service Park, Naivasha
16:15	Post Event FIA Press Conference	Media Centre, Service Park
17:00	Publication of Provisional Classification	Official Notice Board
18:00	Safari Finish Cocktail	Pavilion, Service Park
Monday 27 June		
09:00 - 13:00	Opening of Media Centre (Only by request)	Media Centre, Service Park
09:00 - 13:00	Opening of Rally Secretariat (by appointment only)	Service Park, Naivasha

Wednesday 21 June 2023

Shakedown Loldia-10:01hrs

The Ndulele Conservancy off the Moi North Lake road will be the venue for the Shakedown from 10:01 hrs.

The challenging 5.4kms of Kenyan rally tracks will see action from the various classes of WRC rally cars, including what will be the second season for the Hybrid WRC Rally1 cars.

Undulating tracks with varying surfaces through a wooded landscape will allow the crews to sample in minor what to expect of the 2023 WRC Safari Rally and their first feel of the spectacular challenge ahead. Heat, dust, and a challenging road surface will allow Teams to fine tune their vehicle setups and event strategy in preparation for the Rally proper.

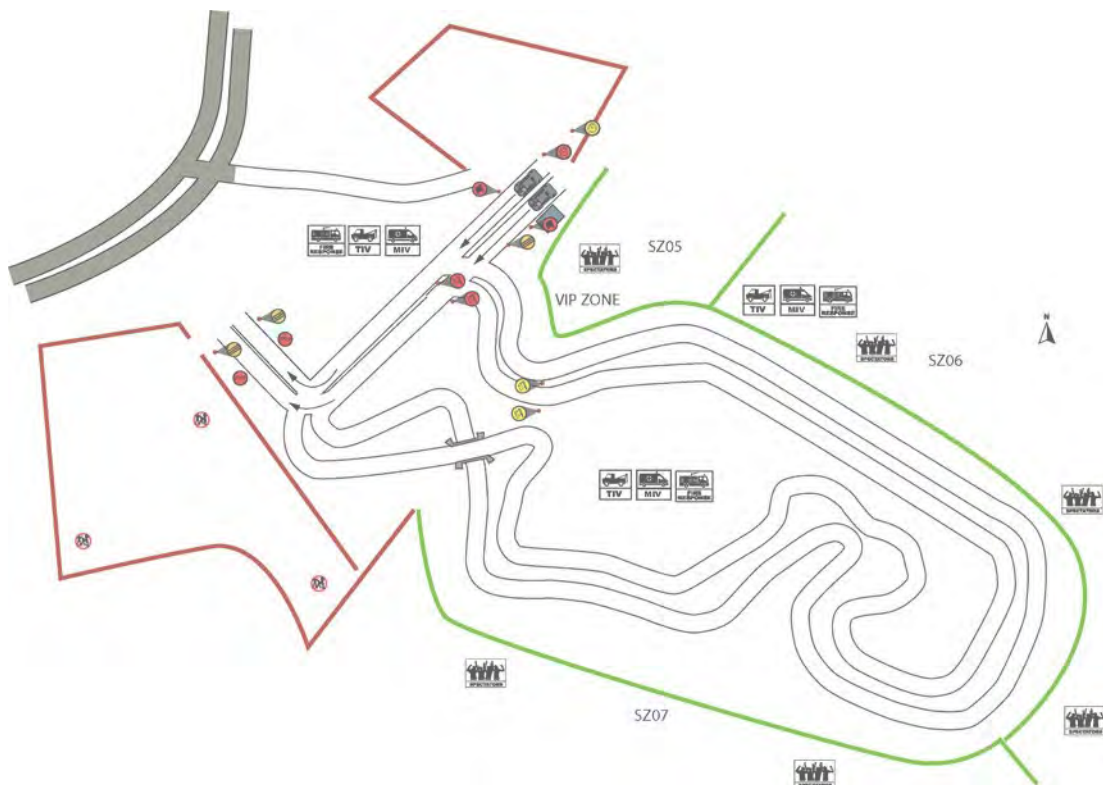


THURSDAY 22 JUNE 2023

SSS1 Super Special Kasarani- 4.84kms @14:05hrs

Reconnaissance of the Kasarani Spectator Stage (SS1), by the drivers in their WRC Rally1 cars from 10.00hrs. Then to Uhuru Park Nairobi –11:51hrs press conference followed by the Ceremonial Start at 12:46 hrs.

The WRC Safari Rally returns once again to its traditional start, in the heart of the capital city, Nairobi. SSS 1, Kasarani will start off the competition with 2 cars racing at a time from 14:05 Hrs, which will then see the cars head back to Naivasha and the first overnight Parc Ferme.



FRIDAY 23 JUNE 2023 (SECTION 2/3)

SS 2/5 Loldia 1 & 2- 19.17kms @ 08:00 & 13:09hrs

The special stage takes place throughout a wooded forest, with tracks that can very be very narrow to flat out sections, reminiscent of Safari of past days. The forest makes it feel very different to all the other special stages. With steep climbs over narrow twisty roads and a descent that is equally challenging – Loldia will settle the drivers into a rhythm.

SS 3/6 Geothermal 1 & 2 – 13.80kms @ 09:18 & 14:27hrs

Starting this year at the KWS Narasha Gate – the stage quickly climbs into the Geothermal fields of the Ol Karia Geothermal projects. At a lower point with tricky wash-aways and after soft dust the route passes community land and settlements to then ascend over an abrasive road surface past craggy rock lined hills to what is one of the higher points on the complex of hills. These hills make up parts of Hells Gate and the Ol Karia geothermal area. The 13.80 km route dips, skirts and flows over hills and valleys that could well be part of a major Hollywood production. Stunning backdrop vistas with the constant plumes of geothermal vents set off against a bright Kenyan sky all combine to present an unforgettable image of SS Geothermal.

SS 4/7 Kedong 1 & 2 – 30.65 kms @ 10:11 & 15:20hrs

A firm favorite of the passionate Rally fans in East Africa also gets a bit of treatment with rerouted sections from 2022, to avoid some irreparable rain damage, deepening dust pans and an area or two with slight safety concerns. With thankfully little reduction in the overall stage distance the reroute works perfectly!



SATURDAY 24 JUNE 2023 (SECTION 4/5)

SS 8/11 Soysambu– 29.32kms @08:01hrs & 14:01hrs

SS Soysambu , a 29 km route through the now familiar Soysambu Conservancy will have a 3km Spectator area at the start, followed by the deceptively tricky run through savannah woodlands , rocky outcrops and a sweeping finish over another large Spectator area

SS 9/12 Elmenteita- 15.08kms (Live TV) @09:05hrs & 15:05hrs

With its naturally beautiful Lake Elmenteita as a unique backdrop, Elementieta will serve as the Live TV Stage on Saturday to accommodate the need to allow Live TV crews the opportunity to capture the action in all its picturesque glory. Running as the days second and fifth stage - Elmenteita will no doubt present iconic imagery with it's grey volcanic dust, lush lakeside vegetation and the promise of a clear blue sky reflected on the Lake surface dotted with flocks of pink Flamingos.

SS 10/13 Sleeping Warrior- 31.04kms @10:03hrs & 16:03hrs

In the shadow of a hill that resembles a Masai Sleeping Warrior, the special stage crisscrosses the natural plain before a rocky finish. The Stage will start after a Remote Refuel zone located adjacent to the Elmenteita crossroads, to wind its way through the challenging rockery that provided some incredible images in 2022.



Sunday 26 June 2022 (Section 6/7/8)

SS 14/17 Malewa 1& 2 – 11.00 kms @ 06:55 & 11:15 hrs

This year the short, sharp Malewa Stage has been brought back – running slightly different from the 2021 stage – with a new Start and a new finish that once again takes crews through some technically demanding stage miles that climb and dip over abrasive surfaces with some sharp square lefts and rights to add to the excitement and challenge of the final day of the Rally.

SS 15/18 Oserian 1 & 2 -18.33 kms @ 07:51 & 12:13hrs

Set within the exclusive Oseregoni Sanctuary, this is one of the more exciting stages. Host to a lot of incidental spectators ranging from Antelopes to Zebras, the Oserian stage consists of varying fauna, indigenous to the area with a continual change of surface as the elevation and flora changes. Home to Leopards and a wandering pack of lions – Oserian epitomizes the Safari Rally.

SS 16/19 Hellsgate 10.53 kms @ 09:05 & 14:15hrs

The famous Hell’s Gate stage with its fast ascents and descents runs as the third and final competitive stage of the Safari Rally on the final day.

With perhaps the most scenic backdrop of any of the Power Stages on the World Rally Championship, Hells Gate is going to sign off the 2023 Safari Rally on a high.

With the finish line alongside the picturesque Fisher’s Tower, Hell’s Gate presents a great opportunity for spectators to get close to the action on the final day and watch the battle for the Power Stage and valuable championship points mid-way through the 2023 World Rally Championship



4. Entry Details

4.1 Entry Procedure

Those wishing to take part in 2023 WRC SAFARI RALLY KENYA must register and fill in the electronic entry form published by the FIA (<https://registrations.fia.com>) duly completed before the closing date for entries. Any non-registered competitor wishing to take part in a WRC rally must register and fill in the FIA electronic entry form: <http://registrations.fia.com/wrcken>

The entry will only be accepted if accompanied by the total amount of the entry fee. To be accepted, competitors must send a proof of payment of the entry fee by e-mail to the secretary of the rally (info@safarirally.co.ke) by the closing date of entries

4.2 Titles for Which the Rally Counts

FIA World Rally Championship for Drivers
FIA World Rally Championship for Co-Drivers
FIA World Rally Championship for Manufacturers
FIA World Rally Championship for Teams
FIA WRC2 Championship for Drivers
FIA WRC2 Championship for Co-Drivers
FIA WRC2 Championship for Teams
FIA WRC3 Championship for Drivers
FIA WRC3 Championship for Co-Drivers

4.3 Criteria for Acceptance of Entry

The maximum number of entrants is set to 50 cars. If more than 50 entries are received, the Organizers will create a reserve list. All vehicles must comply with the provisions of Appendix J.

- All entries received at WRC Safari Rally Secretariat will be checked for vehicle eligibility by a sub-committee. Only after confirmation by the FIA Technical Department will an entry be accepted.
- In case the maximum number of entries is reached, the Organizers reserve the right to accept an entry of an FIA eligible car over that of any Regional or National entry.
- NOTE: All communications relating to entries will only be received at info@safarirally.co.ke.

Any information on entries not sent to info@safarirally.co.ke will not be regarded as an official communication.

4.4 Entry Fees

Fees for Manufacturers and WRC Teams, including all WRC competitors in all WRC Championships (i.e. WRC, WRC2, WRC3 as defined in the FIA WRC Sporting Regulations) are waived for the 2023 WRC Safari Rally Kenya.

Entry Fees for non FIA registered teams:

I) Private Entry

(When the competing car is entered by the driver or the co-driver)

- With the optional advertising proposed by the organizers: € 500
- Without the optional advertising proposed by the organizers: €1,000

ii) Legal Entry

(When the competing car is entered by a team (not a Manufacturer), a company or other legal entity (with legal competitor's license issued by the FIA)

- With the optional advertising proposed by the organisers: € 1000
- Without the optional advertising proposed by the organisers: € 1,500

iii) Other Fees:

- Reconnaissance Only Fee: € 500
- Extra Auxiliary Plate: € 200

4.5 Entry Package for Non FIA Registered Teams

The contents of packages for Manufacturer, WRC2 and WRC 3 competitors are defined in the 2023 WRC Regulations.

The following table describes the contents of entry packages for other crews

	Legal Entries	Private Entries
Vehicle plates		
Service plates	2	2
Auxiliary plates	1	0
VIP plates	1	0
Services		
Area in Service Park	100 m ²	100 m ²
Administration		
Regulations	1 (1)	1 (1)
Road book sets	3 (1)	2 (1)
Rally Guide 1	Website and DNB	Website and DNB
Rally Guide 2	2	1
Route Maps	5 (1)	3 (1)
Programme	5	3
Results	Website and DNB	Website and DNB
() No. Of copies of the total to be mailed or courier to the designated recipient in the entry forms		

Additional materials can be requested from the organisers.

5. Service Park



5.1 Service Park location

Service Park is located at Wildlife Research Training Institute (WRTI) , In Naivasha. (S 0°44'1.58" E 36°27'9.54")

The Service Park is located in an outdoors secured area on a hard-levelled surface. Competitors wishing to use a joint service area with another competitor must inform the Organisers by Monday June 05, 2023 by completing the Joint Service Request form. It is recommended for P1 teams to send a service area and/or workshop layout plan to place containers according to requirements, thus avoiding extra use of container hoists. This information should be e-mailed to servicepark@safarirally.co.ke

Information about the service park(s), etc. Facilities at service park
Service Park content – see list at the end of this Appendix

Environmental requirements

All teams will be required to use a ground protector for each of the vehicles serviced.

5.2 Service Area

Manufacturer	2 Cars	As per 2023 WRC Regulations	900m²
	3 Cars	As per 2023 WRC Regulations	1300m ²
WRC Team	1 Car	As per 2023 WRC Regulations	120m ²
WRC2 Team		As per 2023 WRC Regulations	100m ²
WRC3 Team	1 Car		100m ²
Others	1 Car		100m ²

Other sizes may be available for a fee upon request for WRC3 and Non-Priority Teams. Please contact the organiser at info@safarirally.co.ke

5.3 Access to the Service Park

Competitors can access the service park from Friday 16 June, 2023 at 10:00hrs . Only competing cars and vehicles with special windshield decals “Service” and “Auxiliary” issued by the Organisers will be allowed in the Service Park. Manufacturer and overseas competitors with freight can, by appointment, arrange for earlier access to the Service Park.

Please contact the Organisers at info@safarirally.co.ke with any special requests

5.4 Facilities

The following extra facilities can be ordered for use in the service area.

Please contact the Organisers for special requests.

The following facilities will be provided at various points around the service park:

- Toilets
- Waste Removal / Hazardous Waste Collection
- Water (Direct supply to Manufacturers, WRC Teams, WRC2 and WRC3, general outlets for others)
- Lighting
- Wi-Fi - Access details will be provided by the on-site Rally Office
- Car Wash (Not located within the service park)

The following extra facilities can be provided through the Organisers:

- Private Toilets (Manufacturers will be provided as per WRC regulations)
Waste Removal
- Private Water Supply (may be available, MUST be booked in advance)
- Power Supply (see below)
- Ballast
- Additional security services
- Forklift services
- Crowd barriers / fencing
- Extra service area space

Please contact the Organisers for special requests.

Extra facilities can be requested by filling in the Service Facilities Request form in the Competitors section of the event's website: www.safarirally.co.ke

These services are offered in addition to those included in the 2023 FIA WRC Regulations.

5.5 Security and Medical Services

The Service Park will be under surveillance 24 hours all day starting Friday 16, June 2023.

Extra and or special security services can be hired through the Organisers, contact servicepark@safarirally.co.ke

- A 2-bed Medical Centre will be set up and equipped in accordance with the 2023 FIA International Sporting Code, App H Art 5.3.5

5.6 Promotional Stands

Contact the Organisers at info@safarirally.co.ke for prices and availability of promotional stands in the Rally Service Park in Naivasha, on-stage spectator areas and in the commercial zone at the Super Special venue in Nairobi.

5.7 Traffic Movements

The traffic flow direction shown on the service park layout must be respected at all times by competitors and their service / auxiliary vehicles.

Teams may bring their service/auxiliary and recce car vehicles into the service park, as long as they can park them within their designated area. Otherwise these vehicles must be taken to the auxiliary parking located close to the service park. Any parking of team vehicles outside their designated area in the service park is strictly prohibited.

5.8 Environmental Requirements

A car wash facility will be available near the Service Park. Washing cars within the service park is prohibited at any time. Wheels and other parts may be washed in the designated wash bays set up within the service park.

All competitors must put in place a suitable size plastic ground sheet to cover the whole area where service work is being carried out. This ground sheet must be impervious to all fluids. Cleaning of the ground sheets must be done so that no materials are allowed to come into contact with the ground surface. All waste material must be disposed of in the facilities provided at the Service Park.

5.9 Service Park Manager

For further additional information please contact the Service Park Manager – Joe Muchiri

Tel: +254 721 597 424

Email: muchiri@safarirally.co.ke

Please let Joe know of any special requests as soon as possible and well in advance of the cut off dates (particularly for additional space). This will greatly assist with the planning of the site. Please contact Joe on the email address above should you have any queries or problems.

5.10 Recovery of Retired Cars

Competitors should contact Rally Control to plan for the recovery of their car.

Telephone: +254 707 371310

5.11 Retirements and Re-starts

Refer to Article 54 of the 2022 FIA WRC Regulations.

Competitors who retire will be assumed to restart the rally at the next section following an overnight halt. A competitor who has retired and does not wish to re-start must notify the Organisers as soon as possible using the form in the road book.

5.12 Power

Generators are permitted in the Service Park however these must be super silent diesel or LPG. Generators must be fenced off to restrict access to competent personnel only.

NO PETROL GENERATORS ARE PERMITTED ON THE SITE AT ANY TIME

6. Two-Way Radio

Cellular phones and Family Radio Service stations (e.g. Motorola Talkabout) with a range of under 4km are exempt from radio license, provided they comply with the Communications Authority regulations. The use of all other kinds of radio transmitters is regulated by the Communications Authority (and requires a radio license).

Should you require the use of UHF/ VHF frequencies during the rally, please contact info@safarirally.co.ke before the April 01, 2023 Throughout the rally, the use of amateur radio frequencies is prohibited.

7. Fuel / Tyres

7.1 Fuel and Refueling

All participants, without exception, may only refuel in the Refueling stations designated in the Road Book as Refueling Zones (RZ).

Only the 3 types of fuel below are permitted;

1- P1 Performance Fuels GmbH

2- Avgas

3- Fuel at commercial filling stations indicated in the road book (non-priority driver use only) unless otherwise detailed in the supplementary regulations.

The above (1 and 2) must be ordered from the respective suppliers BEFORE Tuesday 11, May 2023

Online WRC Fuel Order process can be found on the event website

www.safarirally.co.ke

Online Order process for AVGAS can be found on the event website

www.safarirally.co.ke

All competitors are reminded that they must carry their refuel adaptor for the Remote Refuel Zones.

I- Twin Lakes on Friday 25th June

RZ 2 / 4: S0°49.360 ' E36°17.861 ' (29.89 km from SP)

ii- Elmenteita Cross Roads on Saturday 26th June

RZ 6 / 8: S0°28.751 ' E36°09.467 ' (71.50 km from SP)

iii- KWS Training Institute on all days

7.2 Tyres

As per 2023 FIA WORLD RALLY CHAMPIONSHIP SPORTING REGULATIONS, Art 13 Pirelli Tyres order form here: www.safarirally.co.ke

8. Import of Vehicles and Spare Parts

These instructions are preliminary and will be subject to further revisions. Please visit the official web site (www.safarirally.co.ke) for updates on this document.

To make temporary imports into Kenya, these instructions should be fully observed by all participants to avoid unnecessary delays and subsequent extra costs.

These instructions must be acknowledged and accepted as requested herein by all participants.

Contact: info@safarirally.co.ke

Tel: +254 710 692 777 / 710 694 441

Safari Rally has appointed Clearing and Forwarding, logistics and transport services to:

<p>Hambu Freight Services Ltd 3rd Floor, Old Canon Towers, Moi Avenue, Mombasa PO Box 99132-80107 +254 733 634 717 +254 722 570 062 hambufreight@kenyaweb.com Contact person: Peter Mburu</p>	<p>Callfast services Ltd K.A.H.L. – JKIA. 1st Floor. Rm 104, P.O. Box 5199-00100, Nairobi, Kenya. Office Tel: +254 722 696860 E-mail: info@callfast.co.ke Mwambua@callfast.co.ke Lorine@callfast.co.ke</p>
<p>Keihin Maritime Services 3rd Floor, Al-Amin Plaza Sauti ya Kenya Road PO Box 42197-80100 +254 41 223 0349 info@keihinmaritime.co.ke</p>	<p>Alexandria Freight Forwarders Ltd Head Office: 7th Floor, Hazina Towers, Wing A Monrovia Street, Nairobi P.O. Box 21896-00400 +254 20 224 3542/ 3/ 4</p> <p>Mombasa Branch 1st Floor, Canon House Moi Avenue, Mombasa PO Box 81330 +254 41 222 8046 alexandria@africaonline.co.ke</p>
<p>Maersk Kenya www.maersk.com Contact: Mr. Carl Lorenz MD: Maersk Kenya Email: carl.lorenz@Maersk.com +254 705035531</p>	<p>Contact person: Mr. Washington +254 722 511 210 wmuthamia@alexandriafreight.com www.alexandriafreight.com</p>

8.1 Customs Clearance

Customs clearance and checking of goods is mandatory for temporary import into Kenya. It must be completed at the seaport or airport of entrance.

Sea Freight will be cleared at the Inland Container Depot in Naivasha. Authorities may check papers and cargo during transit from the port of Mombasa. The Consignee must register the customs broker in order to be allowed to perform temporary importation of vehicles and parts for the event.

REQUESTED DOCUMENTS

For all shipments, customs clearing procedures require copy of the following documents to be sent to the agent at least 15 days prior to the estimated date of arrival.

- Proforma Invoice
- Packing list
- Import form duly completed. The form can be found on the official website. (No handwriting will be accepted, Typewriter or Computer printed only)
- Bill of lading / Airway bill. To be sent by fax/e-mail to the agent as soon as equipment is loaded into the vessel.

FIA-AIT Carnet is permitted for importation of motor vehicles. ATA Carnet issued by the Chamber of Commerce is not permitted for importation of cars and spare parts in Kenya. Please do not use it Spare parts are temporarily imported by supply of a bank or insurance bond for the value of the duty and taxes evaluated by Kenya Customs Authority.

DOCUMENT INFORMATION

PROFORMA INVOICE

Original Proforma Invoice and packing list has to be sent by e-mail on Word/Excel format to info@safarirally.co.ke, specifying all items being sent to KENYA, with their value plus cost of freight and insurance, model and reference numbers. One individual “import form” per vehicle must be completely filled and checked.

All chassis and engine numbers must be correct to prevent any delays for clearing.

PACKING LIST

In order to facilitate customs checking it is very important to complete this document. It must indicate net and gross weights of each box or container and should detail every major item as indicated in the proforma invoice. Hand tools and small elements such as bolts, nuts, etc. may be indicated as kit of (...) (approximate number of elements in each kit must be stated). It is advisable that consumables should not be included as these cannot be items imported temporarily.

IMPORT FORM

All documents have to be consigned as indicated hereafter:

WRC Safari Rally Project
Moi International Sports Centre,
Kasarani Thika Road,
Nairobi, Kenya.

Telephone: +254 710 692 777 / 710 694 441

C/O (INSERT 1, 2, 3, or 4 from your chose clearing agent as listed in the above table)

BILL OF LADING / AIRWAY BILL

For both sea and air shipments it is highly recommended to send these documents as "FREIGHT PREPAID".

All shipments must be consigned to: (Your respective chosen Forwarding and Clearing agent)

BILL OF LADING: Consignee and Notify as stated below.

Please use "EXPRESS RELEASE/SEA WAY BILL"

ALL SEA SHIPMENT documents should be sent only in electronic format

AIRWAY BILL

It should indicate "Jomo Kenyatta International Airport, Nairobi" as airport of destination.

Consignee and Notify as stated below.

*All AIR SHIPMENT documents should be sent attached to the Airway Bill.

CONSIGNEE

Invoices and packing list have to be addressed as indicated hereafter:

WRC Safari Rally Project

Moi International Sports Centre, Kasarani

Thika Road, Nairobi, Kenya.

Telephone: +254 710 692 777 / 710 694 441

C/O (Your respective chosen Forwarding and Clearing agent NOTIFY THE AGENT and the Permanent Secretariat

Please send a copy to Email:

info@safarirally.co.ke

IMPORTANT NOTICE

For OCEAN shipments, the shipper must send, via e-mail, copies of all documents AT LEAST 21 DAYS BEFORE ARRIVAL OF GOODS TO KENYA and 7 DAYS BEFORE ARRIVAL for the AIR shipments. Failing to do this could cause unnecessary delays and extra costs in customs and warehousing.

RE-EXPORTING

Participants must note that all goods sent to Kenya with temporary import status must be re-exported. If not so for any reason, the status should be changed as final import and, if allowed, the participant must pay all duties and taxes within the legal timeframe. In case of total or partial relocation of goods, or change of shipment method (air to sea or vice versa) participants should notify the Agent in advance and with sufficient information in order to fulfil all custom procedures

RECOMMENDED SHIPPING LINE

Maersk Kenya
www.maersk.com
Contact: Mr. Carl Lorenz
MD: Maersk Kenya
Email: carl.lorenz@Maersk.com
+254 705035531

8.2 Inland Logistics Procedures

After customs clearance is completed, vehicles and goods will be able to proceed to their final destination at the Service Park, in Naivasha. The organisers will facilitate preferential transport by SGR Rail services for Sea containers to be moved from Mombasa to the Mai Mahiu Inland Container Depot.

A standard inland transit time from JKIA to Service Park, Naivasha: 4hrs

A standard inland transit time from Mai Mahiu Inland Container Depot to Service Park, Naivasha: 2hrs

At the time of arrival at the Service Park, containers can be immediately delivered to workshops previously designated by teams, or sent to temporary holding areas within the Service Park.

It is recommended to send a service area and/or workshop layout to place containers according to requirements, thus avoiding extra use of cranes. This information should be sent to info@safarirally.co.ke

Cranes and forklift trucks will be available for use by all participants during the event (for rates please send request to the above contact).

Insurance bonds, covering at least third party (liability) damage, must be issued by a Kenyan insurance company or by a foreign company with proper representation in Kenya.

For insurance bonds we suggest working with your appointed Clearing agent. Should you require assistance, kindly contact info@safarirally.co.ke

Note: you will require a minimum 3rd party insurance & temporary road permit (can normally be taken out by the Clearing & Forwarding Agents)

8.3 Passengers arriving in Kenya

When traveling to Kenya, each person is allowed to bring in \$500 USD worth of imported goods tax-free that will remain in the country. If any person will be carrying goods destined for the rally, they should advise us at info@safarirally.co.ke stating the name of the passenger, the flight number and a description of the goods to make sure that entry is permitted through customs.

RECOMMENDED SHIPPING LINE

Maersk Kenya

www.maersk.com

Contact: Mr. Carl Lorenz

MD: Maersk Kenya

Email: carl.lorenz@Maersk.com

+254 705035531

Legal Provisions

Persons making temporary visits to Kenya not exceeding three (3) months are allowed to bring in with them the following goods duty free;

Non-consumable goods for personal use during the visit which will be exported back with the passenger at the end of the stay.

Consumable goods and non-alcoholic beverages to be used during their stay in the country. The following goods will be allowed duty-free only in the quantities specified and only if imported as accompanied baggage FOR passengers who have attained the age go eighteen (18) years:

Spirits, including liquors not exceeding one liter, or wine not exceeding two liters

Perfumes and toiletries not exceeding in all one liter, of which the perfume should not be more than a quarter litre.

Cigarettes, cigars, cheroots, cigarillos, tobacco and snuff not exceeding in all 250 grams in weight .The non-consumable goods should be exported within thirty days or a period not exceeding sixty days from the date the passenger leaves the country otherwise duty becomes payable

For any further information or queries on the above,please contact

info@safarirally.co.ke

8.4 Payments

Teams are wholly responsible for any payments to their Clearing and Forwarding agents and any transportation in Kenya.

8.5 Visas

E-Visa application website – an online system that requires to be completed before departing for Kenya.

Do you require a visa: who requires a visa?

How do I Apply

You need to:

Click registration at www.ecitizen.go.ke

Select Register as a Visitor.

Once Logged in, Select Department of Immigration services.

Select submit Application.

Select Kenyan Visa.

Select the type of Visa and read the Instructions Carefully.

Fill in the application form.

Pay Using visa card, Mastercard and other debit cards.

Await approval via email, then download and print the eVisa from your eCitizen account.

Present your printed eVisa to the immigration officer at the port of entry.

<https://www.ecitizen.go.ke>

9. Helicopters

9.1 Helicopter registration

In accordance with the FIA Safety Regulations and the requirements of the Civil Aviation authorities, all helicopters participating in the Rally must be registered with the Organiser.

All helicopters operating in the rally area during the event must be registered with the organizer at a cost of €2,000.00(+VAT16%) and have completed the registration form by Tuesday June 20, 2023. To be permitted to enter the airspace prohibited to normal air traffic, pilots must be familiar with the special flight guidelines.

Airspace above the Special Stages are CLOSED for the exception of WRC TV, AIR RESCUE and SECURITY. Kindly contact info@safarirally.co.ke for permitted landing areas for all helicopters and fixed wing aircraft.

Attendance at the pilot's briefing on Wednesday 22 June, 2023, at 09:00 hrs., is mandatory for all pilots. After registration and payment of the appropriate fee, all pilots will receive additional information at least one week before the event.

As all correspondence will be made by e-mail. An e-mail address must be specified on the registration form.

9.2 Helicopter Charter Companies

Helicopter Registration form can be found here <http://www.safarirally.co.ke/>

Albatros Aviation Ltd +254 791 696642	Level Up Ltd +254 (0) 714 88859 hamish@levelupaero.com
KIDL Helicopters +254 (0)722 782947 +254 (0)734 257647 flyng@kidlhelicopters.com www.kidlhelicopters.com	Tropic Air Kenya +254 (0) 722 207 300 +254 (0) 734 333044 info@tropicairkenya.com www.tropicairkenya.com
Flex Air Charters +254 (0) 726 293 984 nrbops@flexaircharters.co.ke http://flexaircharters.co.ke	Corporate Helicopters (Youth Aviation) +254 (0) 707 777 100 +254 (0) 735 777 100 heliops@corporatehelicopters.co.ke https://corporatehelicopters.co.ke
Ventura Aviation +254 (0) 720 681 785 finance@venturaviation.com	

10. Hospitality arrangements

Contact details for person in charge of hospitality arrangements

Faith S. Wathome

Head of Hospitality

Mobile: +254 722 410375

faith@safarirally.co.ke

11. Hotel / Accommodation Reservation

WRC Safari Rally Recommended hotels can be found online, here:

<http://www.safarirally.co.ke/competitors/>

For reservations contact :

Official WRC – Hospitality coordinators and hotel booking arrangements.

Email: hospitality@safarirally.co.ke

Telephone Numbers: +254 722 410 375 Faith
 +254 721 783 379 Victor

12. Reconnaissance

12.1 Duration and Schedule

Reconnaissance will take place from Monday 19 March to Tuesday 20 2023, according to the specified schedule which will be available in the Supplementary Regulations. Only the Driver & Co-driver registered as a competitor and those crews that have paid the reconnaissance only fee are permitted on reconnaissance.

12.2 Registration

All entrants taking part in the reconnaissance must register at the Rally Secretariat to get all the necessary documentation before starting their reconnaissance. Registration for reconnaissance can be done according to the schedule specified in the Rally Programme at the Rally Secretariat. For priority 1 and 2 drivers, a team member duly designated in writing can collect the materials. Other crews have to register in person.

12.3 Reconnaissance Procedure

Reconnaissance form can be found on the event website www.safarirally.co.ke

Reconnaissance ONLY form can be found on the event website www.safarirally.co.ke

Any driver wishing to take part in reconnaissance only will be required to complete the reconnaissance registration form that will be available on the event website. The fee for taking part in reconnaissance ONLY is € 500.

13. Scrutineering, Sealing and Marking

Scrutineering will be performed commencing Monday 29, June 2023 following a Detailed schedule published in the Supplementary Regulations, Rally Guide 2 and in subsequent bulletins and will be performed within the Service Park in Naivasha.

14. Shakedown

Shakedown for eligible crews will take place on Wednesday 21, June 2023 according to the following schedule:

Priority 1 drivers and invited crews: 13:01 - 15:00

Shakedown for WRC2, WRC3 & Non-Priority Drivers (Optional for Non-Priority Drivers but by prior registration): 15:00 to 16:30

Shakedown for WRC2, WRC3 & Non-Priority Drivers (Optional for Non-Priority Drivers but by prior registration, form here: <http://www.safarirally.co.ke/>

All crews must wear the same FIA approved safety equipment as required for the rally.

14.1 Shakedown Location

The Shakedown test stage will take place in the Loldia Conservancy in Naivasha and is 5.40 kilometers long. The Shakedown stage will be open to all participants (Compulsory for all Priority 1 drivers). The Main Service Park is located 30.94 km from the Shakedown start and will be used as the main service venue.

Remote Service Area will be created close to the SD only for P1, P2 & P3

Distance from Service Park to Shakedown: 30.94 km

Total Length of the Shakedown: 5.40 km

Total Length of the Shakedown Loop: 6.13 km

Refueling will be available at Refueling Zone at Service Park during Shakedown operating hours.

Reconnaissance for the Shakedown stage will be included in the Reconnaissance Schedule for all drivers

15. Media

As a round of the FIA World Rally Championship, 2023 WRC SAFARI RALLY KENYA follows the regulations and procedures set out by the FIA for media accreditation.

Please make sure to read these guidelines and follow them closely.

It is very important to provide all the requested documentation and to send it the correct office. Errors in procedure will result in delayed requests. More information can be requested by emailing info@safarirally.co.ke

15.1 Contacts Before The Rally

Media Office

WRC Safari Rally

Moi International Sports Centre, Kasarani

Thika Road, Nairobi, Kenya.

Telephone: +254 710 692 777 / 710 694 441

Email: media@safarirally.co.ke

Website: www.safarirally.co.ke

15.2 National publications, National Photographers, National Websites and National Radio Stations.

Requests for accreditation for publications, photographers, websites and radio stations in Kenya must apply on our website www.safarirally.co.ke no later than June 16,2023

The Chief Media Officer will e-mail the result of the accreditation request to the outlet's headquarters at least two weeks before the rally. If the request is accepted, an agreement will be included, to be signed by the Editor. No accreditation will be finalized without written authority. If the representative of the publication is unable to attend, the Chief Media Officer needs to be notified at least seven days before registration opens.

Television

For all Television accreditations, broadcasters and networks are to contact the WRC Promoter before June 02 2023 at: accreditation@wrc.com

International Publications, Photographers, Radio and Internet Media

All accreditation requests from international publications, photographers and websites must be made to the FIA before June 02, 2023 using the online accreditation system on www.fia.com in accordance with the stated procedure.

FIA WRC Permanent Pass Holders

No accreditation request is needed, but both the Chief Media Officer and the FIA Media Delegate need to be informed of the pass holder's intent to attend the event. Please do so by e-mail at least five days before Scrutineering. Principles for accreditation, documentation and photographers

Principles

- a) A maximum of three representatives (journalists or photographers) per publication will be accredited.
- b) A publication will need to comply with the distribution and quality established by the FIA, and be for sale to the public. Internal and club publications cannot be accredited as media outlets. Accreditation decisions are based on the market of the requesting country.
- c) Promoters of any kind, such as PR or marketing personnel, cannot be accredited as media representatives.
- d) Private teams with established drivers may apply for accreditation for a media representative directly to the FIA Media Delegate.
- e) Central and local offices of large international press agencies (AP, AFP, Reuters, ANSA, UPI, DPA, LUSA, BELGA, JIJI, KYODO, EFE, Press Association, SAPA, Australian AP, APA, etc.) will always be accredited directly by the FIA

B) Required documentation for each request

- a) An accreditation request on the publication's official stationery, signed by the Managing Director or Editorial Director.
- b) The name(s) and charge of the representatives who will cover the event.
- c) General information about the publication, such as frequency and distribution.

Late or incomplete requests will not be considered.

- d) Official ID (INE, passport, driver's license) of the people interested in the accreditation.
- e) Testimonials of material published about the 2021/2022 SAFARI RALLY or the FIA World Rally Championship.
- f) Any request by a freelance journalist must be accompanied by a list of articles published during the previous 12 months, including the publication name and date

B) Required documentation for each request

- a) An accreditation request on the publication's official stationery, signed by the Managing Director or Editorial Director.
- b) The name(s) and charge of the representatives who will cover the event.
- c) General information about the publication, such as frequency and distribution.
- d) Official ID (INE, passport, driver's license) of the people interested in the accreditation.
- e) Testimonials of material published about the 2021/2022 SAFARI RALLY or the FIA World Rally Championship.
- f) Any request by a freelance journalist must be accompanied by a list of articles published during the previous 12 months, including the publication name and date
Late or incomplete requests will not be considered.

National Press Photographers

C) Accreditation for photographers

The number of passes for National Press Photographers is limited by the FIA to 12.

International Press Photographers

Publications or agencies seeking accreditation for a single WRC event must provide proof of independent coverage in the form of at least 15 photographs per pass taken of each event where they attended as accredited media during the previous year.

In the case of an agency, the pictures must have been sold at regular commercial prices to publications that comply with FIA criteria.

For publications, the published pictures must be demonstrated to be original work by the author accredited by the publication.

Commercial/Promotional Photographers

Commercial or promotional photographers may request accreditation to accreditation@wrc.com

15.3 Media Reconnaissance

Media who wish to take part in the reconnaissance must complete the Media Reconnaissance form available at www.safarirally.co.ke and return it to the Organisers no later than Friday 04, June 2023.

Passes must be collected from Media Accreditation, Naivasha on Sunday 18, June 2023 between 12.00 - 18.00.

16. Medical and Safety Service

Emergency numbers:

+254 710-693-338

+254 710-693-535

+254 710-693-993

It is HIGHLY recommended that all visitors to Kenya have Accident and Medical insurance cover, or the same are covered by their Travel Insurance

16.1 Hospitals

NAIROBI

Aga Khan University Hospital

Telephone: +254 366 2020 / 22 or 3740000 ext. 2020 / 2022

MP Shah Hospital

Telephone: +254 20 429110/0722 204 427/ 0733606113

Nairobi Hospital

Telephone: + 254703082000

NAIVASHA

Naivasha Sub-county Hospital

Telephone: +254770735546

17. List of useful facts and services

The climate in Nairobi County is cooler than average areas in Kenya. Average temperatures for June are between 14-23 degree centigrade.

The climate in Nakuru County is milder than average areas in Kenya. Average temperatures for June are between 9-25 degree centigrade

The tap water is safe to drink when boiled. Drink bottled water bought from supermarkets.

The electric supply is 240 volts. Plugs and sockets are of a three pin design, type G.

Time Zone

The official time during the rally will be GMT time. Sunrise 6:00 am. Sunset 6:30 pm. plus 3h GMT Greenwich Mean Time (GMT)

Currency

Currency is Kenya shillings divided into 10 cents.

The denominations in circulation are:

50, 100, 200, 500 and 1000 Coins: 05, 1, 10, 20, 40 shillings

Exchange rate: (at time of publication)

1 US \$:

1 UK Pounds:

1 Euro:

Rates from www.centralbank.go.ke/forex as of 25th January 2023

Telephones

There are no public telephones in Kenya but you can get this service in hotels.

The International prefix for incoming calls is +254.

There are 3 cell service providers; Safaricom, Airtel and Telkom.

Sim cards are available upon arrival at JKIA and all shopping malls. Passports will be needed when purchasing and registering the sim card.

Driving

The driver and all passengers are required to use seat belts at all times. It is illegal to use a hand-held mobile telephone whilst driving.

The Police can order Breathalyzer tests of drivers.

The maximum permitted level of alcohol in the bloodstream is 0.08%. Drive on the LEFT, and overtake on the right.


Speed Limits (Cars) Built up areas 48kph

These speed limits are for cars; there are other limits for vans and goods vehicles. There are motorway tolls once you have entered Kenya and you are driving to Naivasha & Nakuru from Nairobi

Appendix 1 Itinerary

THE GREAT KENYAN EXPERIENCE IN AFRICA






SAFARI RALLY KENYA 2023

June 22nd-June 25th






SAFARI RALLY KENYA

www.safarirally.co.ke



Itinerary

Wednesday 21 June 2022

TC		Location	SS Dist.	Liaison Dist.	Total Dist.	Target Time	First Car Due
SS			Km.	Km.	Km.		
   2023 SAFARI RALLY KENYA Version 0.6							
Shakedown						Wednesday 21 June 2023	
TC SD		Service Park - KWS Naivasha	-	30.82	30.82		09:56
SD		Shakedown Loldia	5.40	-	-		10:01
		Service Park - KWS Naivasha	-	30.80	36.20	Priority Drivers 10:01 / 13:00	
Wednesday Totals			5.40	61.62	67.02	All Drivers 13:00 / 14:00	
Start - (Section 1)						Thursday 22 June 2023	
0		Start - Kenyatta International Conference Centre					12:46
1*			-	19.60	19.60	0:58	13:44
SS 1		Super Special Kasarani	4.84	-	-		14:05
1A*		Parc Fermé In - KWS Naivasha	-	97.35	102.19	2:45	16:50
Thursday Totals			4.84	116.95	121.79		
						Sunrise - Naivasha	06:35
						Sunset - Naivasha	18:38
* Early check-in permitted							

Friday 23 June 2022

2023 SAFARI RALLY KENYA

Version 0.6

Re-Start (Sections 2 & 3) Friday 23 June 2023

TC SS	Location	SS Dist. Km.	Liaison Dist. Km.	Total Dist. Km.	Target Time	First Car Due
1B	Parc Fermé Out - Service - In	-	-	-		07:00
	Service A (KWS Naivasha)	-	-	-	0:15	
1C	Service - Out	-	-	-		07:15
RZ	Refuel (FIA Fuel) - KWS Naivasha	-	(0.25)	-		
1	<i>Distance to next refuel</i>	(32.97)	(79.96)	(112.93)		
2		-	31.39	31.39	0:42	07:57
SS 2	Loldia 1	19.17	-	-		08:00
3		-	34.64	53.81	1:15	09:15
SS 3	Geothermal 1	13.80	-	-		09:18
RZ	Refuel (FIA Fuel) - Oserian Twin Lakes	-	(14.18)	-		
2	<i>Distance to next refuel</i>	(30.65)	(26.51)	(57.16)		
4		-	25.74	39.54	0:50	10:08
SS 4	Kedong 1	30.65	-	-		10:11
4A	Regroup & Technical Zone - In	-	14.95	45.60	1:03	11:14
4B	Regroup Out & Flexi-Service In	-	-	-	0:40	11:54
	Flexi-Service B (KWS Naivasha)	(63.62)	(106.72)	(170.34)	0:30	
4C	Flexi-Service Out	-	-	-		12:24
RZ	Refuel (FIA Fuel) - KWS Naivasha	-	(0.25)	-		
3	<i>Distance to next refuel</i>	(32.97)	(79.96)	(112.93)		
5		-	31.39	31.39	0:42	13:06
SS 5	Loldia 2	19.17	-	-		13:09
6		-	34.64	53.81	1:15	14:24
SS 6	Geothermal 2	13.80	-	-		14:27
RZ	Refuel (FIA Fuel) - Oserian Twin Lakes	-	(14.18)	-		
4	<i>Distance to next refuel</i>	(30.65)	(26.51)	(57.16)		
7		-	25.74	39.54	0:50	15:17
SS 7	Kedong 2	30.65	-	-		15:20
7A	Parc Fermé & Technical Zone - In	-	14.95	45.60	1:03	16:23
7B	Parc Fermé Out - Flexi Service - In	-	-	-	0:10	16:33
	Flexi-Service C (KWS Naivasha)	(63.62)	(106.72)	(170.34)	0:45	
7C*	Flexi Service Out - Parc Fermé - In	-	-	-		(17:18)
	All cars must be returned to Parc Ferme no later than					20:33
Friday Totals		127.24	213.44	340.68		
					Sunrise - Naivasha	06:35
					Sunset - Naivasha	18:38

* Early check-in permitted

Section 2

Section 3

Saturday 24 June 2022

		2023 SAFARI RALLY KENYA				Version 0.6	
Re-Start (Sections 4 & 5)				Saturday 24 June 2023			
TC	Location	SS Dist.	Liaison Dist.	Total Dist.	Target Time	First Car Due	
SS		Km.	Km.	Km.			
7D	Parc Fermé - Out	-	-	-		06:35	
RZ	Refuel (FIA Fuel) - KWS Naivasha	-	(0.25)				
5	<i>Distance to next refuel</i>	(44.40)	(76.58)	(120.98)			
8		-	61.54	61.54	1:23	07:58	
SS 8	Soysambu 1	29.32	-	-		08:01	
9		-	4.24	33.56	0:55	08:56	
SS 9	Elmenteita 1 (Live TV)	15.08	-	-		09:05	
RZ	Refuel (FIA Fuel) - Crossroads	-	(11.05)				
6	<i>Distance to next refuel</i>	(31.04)	(50.85)	(81.89)			
10		-	16.51	31.59	0:55	10:00	
SS 10	Sleeping Warrior 1	31.04	-	-		10:03	
10A	Regroup & Technical Zone - In	-	45.14	76.18	1:26	11:29	
10B	Regroup Out & Flexi-Service - In	-	-	-	0:38	12:07	
Flexi-Service D (KWS Naivasha)		(75.44)	(127.43)	(202.87)	0:30		
10C	Flexi-Service - Out	-	-	-		12:37	
RZ	Refuel (FIA Fuel) - KWS Naivasha	-	(0.25)				
7	<i>Distance to next refuel</i>	(44.40)	(76.58)	(120.98)			
11		-	61.54	61.54	1:21	13:58	
SS 11	Soysambu 2	29.32	-	-		14:01	
12		-	4.24	33.56	0:55	14:56	
SS 12	Elmenteita 2 (Live TV)	15.08	-	-		15:05	
RZ	Refuel (FIA Fuel) - Crossroads	-	(11.05)				
8	<i>Distance to next refuel</i>	(31.04)	(50.60)	(81.64)			
13		-	16.51	31.59	0:55	16:00	
SS 13	Sleeping Warrior 2	31.04	-	-		16:03	
13A	Parc Fermé & Technical Zone - In	-	45.14	76.18	1:26	17:29	
13B	Parc Fermé Out - Flexi Service - In	-	-	-	0:10	17:39	
Flexi-Service E (KWS Naivasha)		(75.44)	(127.43)	(202.87)	0:45		
13C*	Flexi Service Out - Parc Fermé - In	-	-	-		(18:24)	
All cars must be returned to Parc Ferme no later than						21:39	
Saturday Totals		150.88	254.86	405.74			
Sunrise - Naivasha						06:35	
Sunset - Naivasha						18:38	

* Early check-in permitted

Section 4

Section 5

Sunday 25 June 2022

TC		Location	SS Dist.	Liaison Dist.	Total Dist.	Target	First Car
SS	Km.		Km.	Km.	Time	Due	
13D		Parc Fermé - Out	-	-	-		06:20
RZ		Refuel (FIA Fuel) - KWS Naivasha	-	-	-		
9		<i>Distance to next refuel</i>	(29.33)	(72.73)	(102.06)		
14			-	24.15	24.15	0:32	06:52
SS 14		Malewa 1	11.00	-	-		06:55
15			-	30.20	41.20	0:53	07:48
SS 15		Oserian 1	18.33	-	-		07:51
RZ		Refuel (FIA Fuel) - Oserian Twin Lakes	-	(15.72)	-		
10		<i>Distance to next refuel</i>	(10.53)	(62.99)	(73.52)		
16			-	34.10	52.43	1:08	08:59
SS 16		Hell's Gate 1 (Live TV)	10.53	-	-		09:05
16A		Regroup & Technical Zone - In	-	44.61	55.14	1:07	10:12
16B		Regroup Out & Service - In	-	-	-	0:10	10:22
Service F (KWS Naivasha)			(39.86)	(133.06)	(172.92)	0:15	
16C		Flexi-Service - Out	-	-	-		10:37
RZ		Refuel (FIA Fuel) - KWS Naivasha	-	-	-		
11		<i>Distance to next refuel</i>	(29.33)	(70.73)	(100.06)		
17			-	24.15	24.15	0:35	11:12
SS 17		Malewa 2	11.00	-	-		11:15
18			-	30.20	41.20	0:55	12:10
SS 18		Oserian 2	18.33	-	-		12:13
RZ		Refuel (FIA Fuel) - Oserian Twin Lakes	-	(15.72)	-		
12		<i>Distance to next refuel</i>	(10.53)	(60.99)	(71.52)		
18A		Regroup & Technical Zone - In	-	32.10	50.43	1:08	13:21
18B		Regroup Out	-	-	-	0:46	14:07
19			-	2.00	2.00	0:05	14:12
SS 19		Hell's Gate 2 - Wolf Power Stage	10.53	-	-		14:15
19A		Technical Zone / Parc Ferme - In	-	44.61	55.14	1:07	15:22
		PODIUM	-	-	-		16:00
Sunday Totals			79.72	266.12	345.84		
						Sunrise - Naivasha	06:35
						Sunset - Naivasha	18:38

TOTALS OF THE RALLY				
	SS	Liaison	Total	%
Thursday 22 June 2023				
Section 1 - 1 SS	4.84	116.95	121.79	4.0%
Friday 23 June 2023				
Section 2 & 3 - 6 SS	127.24	213.44	340.68	% of Special stages
Saturday 24 June 2023				
Sections 4 & 5 - 6 SS	150.88	254.86	405.74	37.2%
Sunday 25 June 2023				
Sections 6, 7 & 8 - 6 SS	79.72	266.12	345.84	23.1%
Total - 19 SS	362.68	851.37	1214.05	29.9%

Section 6


Section 7

Section 8

Appendix 2 Maps

THE GREAT KENYAN EXPERIENCE IN AFRICA






SAFARI RALLY KENYA 2023

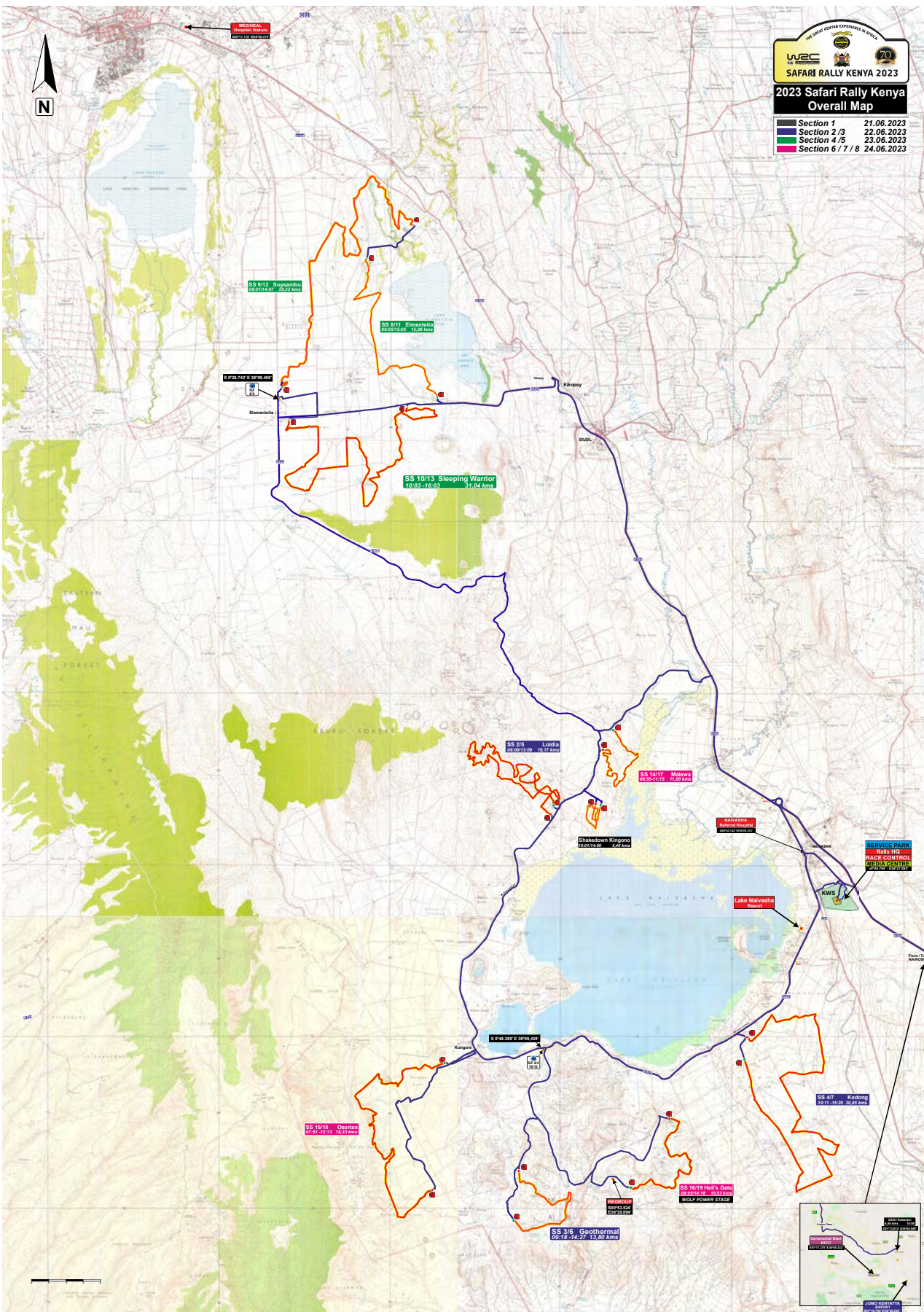
June 22nd-June 25th



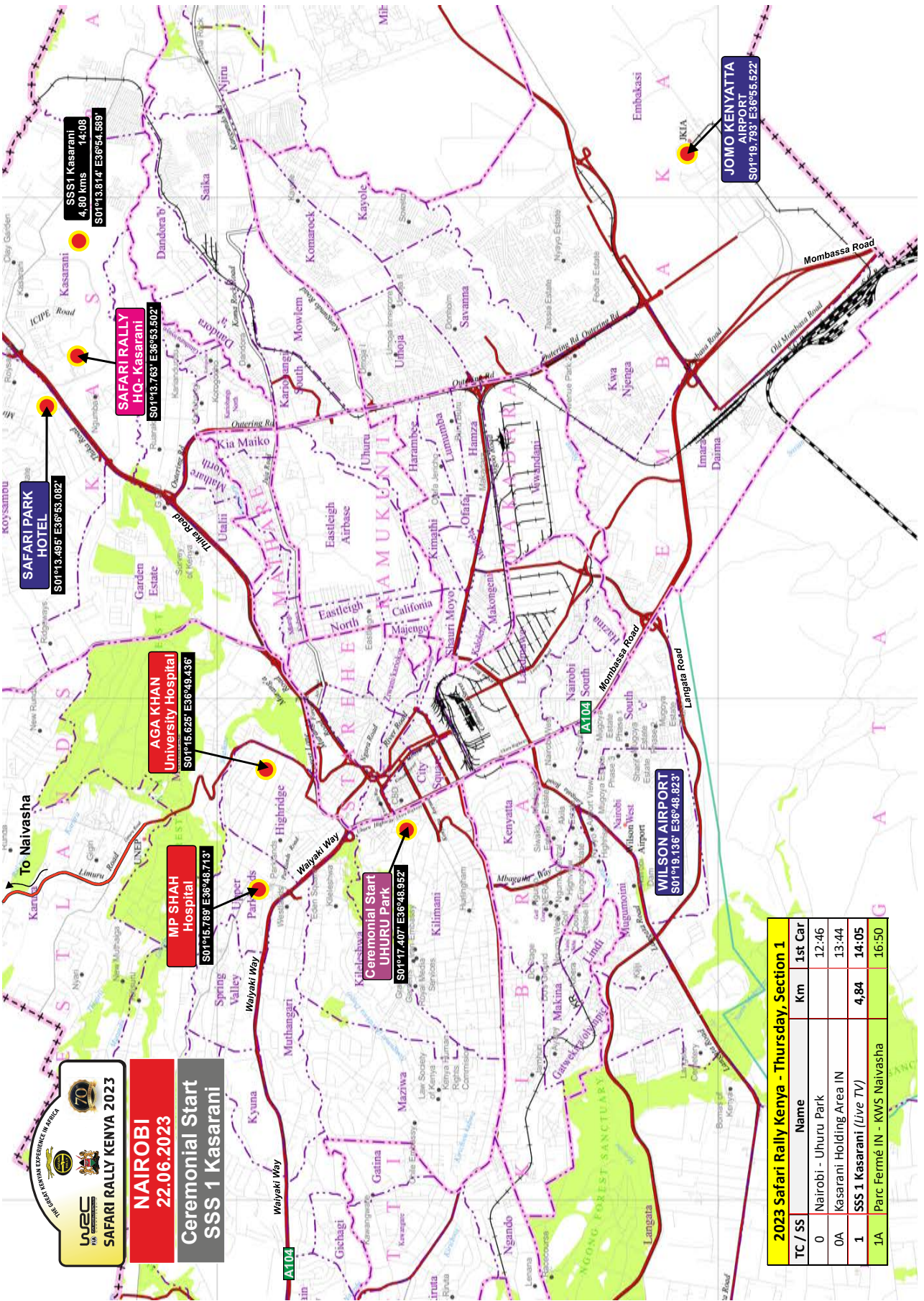
SAFARI RALLY KENYA

www.safarirally.co.ke









SAFARI RALLY KENYA 2023

NAIROBI

22.06.2023

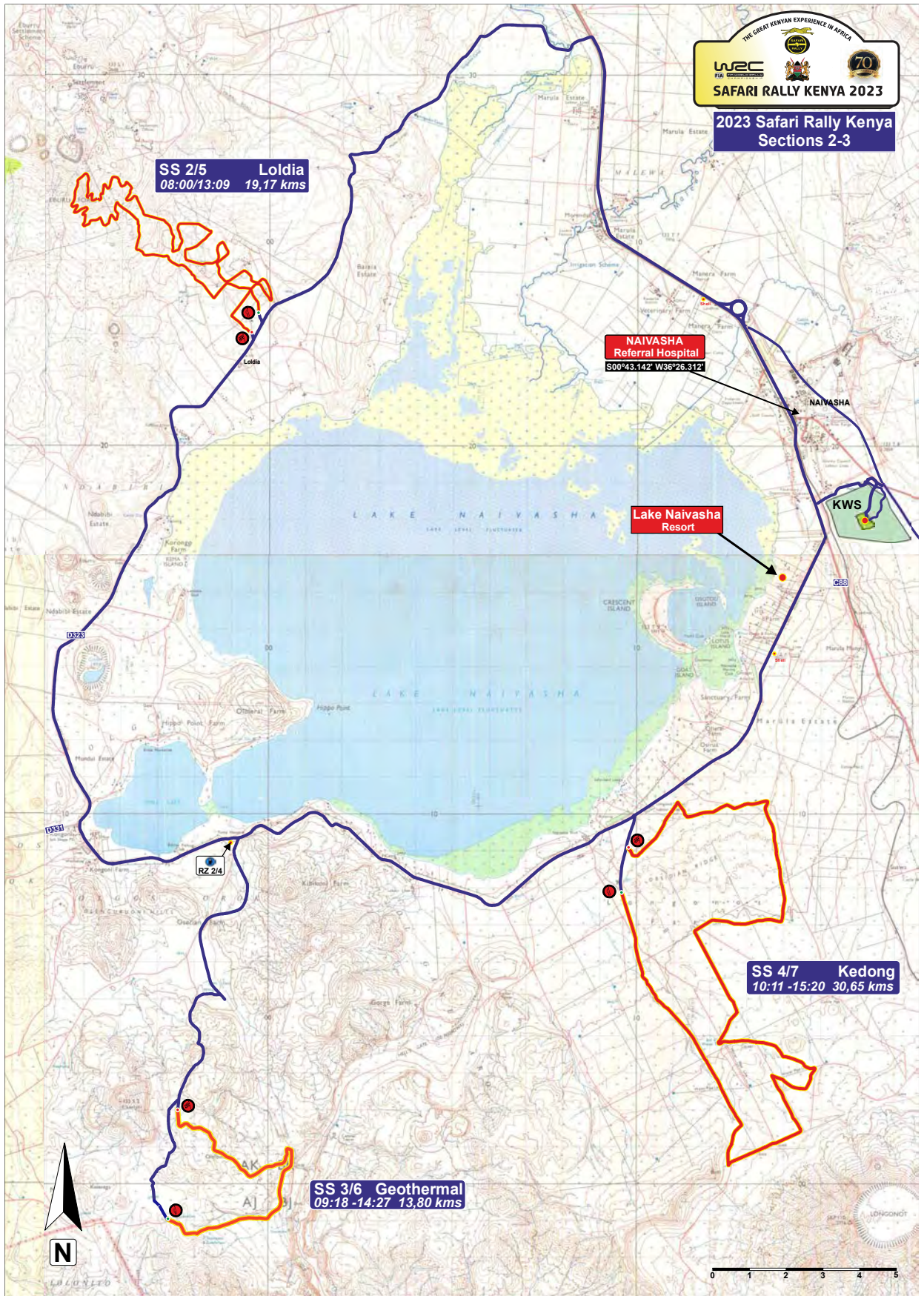
Ceremonial Start

SSS 1 Kasarani

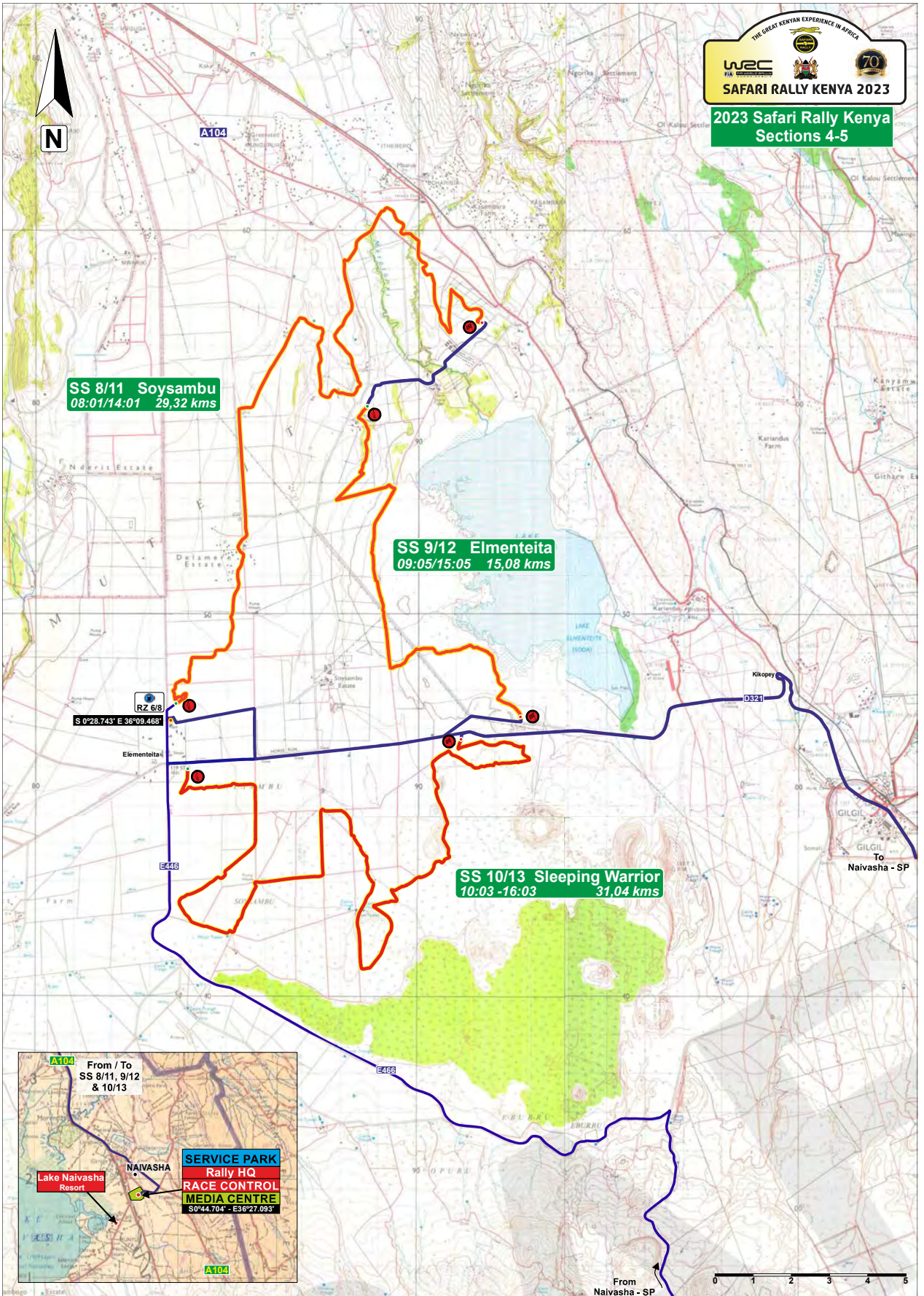
2023 Safari Rally Kenya - Thursday, Section 1

TC / SS	Name	Km	1st Car
0	Nairobi - Uhuru Park		12:46
0A	Kasarani Holding Area IN		13:44
1	SSS 1 Kasarani (Live TV)	4.84	14:05
1A	Parc Fermé IN - RWS Naivasha		16:50

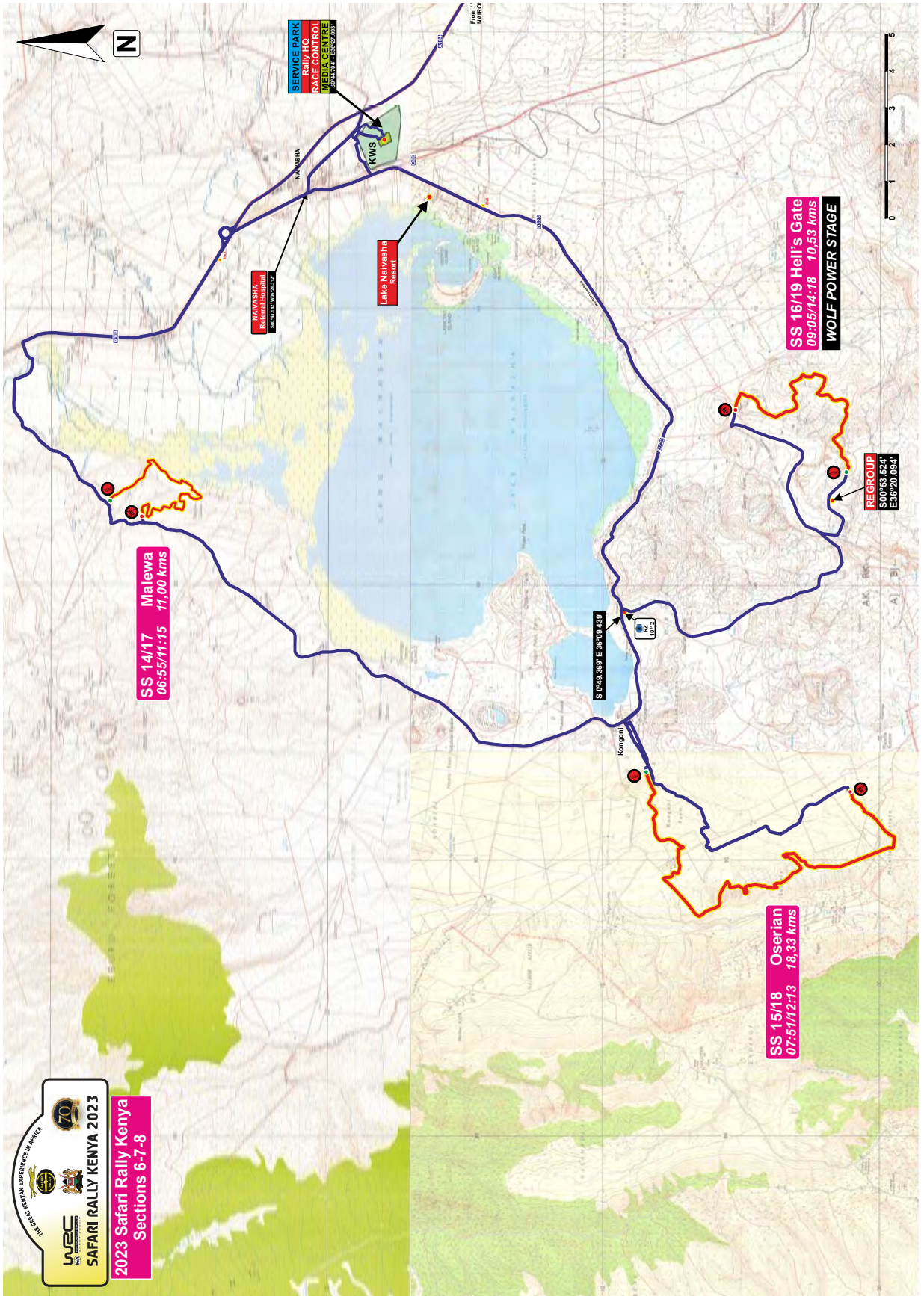
Friday 23 June 2023 (Section 2 & 3)



Saturday 24 June 2023 (Section 4 & 5)







Sunday 25 June 2023 (Section 6,7 & 8)



Appendix 3 Reconnaissance Schedule

THE GREAT KENYAN EXPERIENCE IN AFRICA

SAFARI RALLY KENYA 2023

June 22nd-June 25th



SAFARI RALLY KENYA

www.safarirally.co.ke



Reconnaissance Schedule

2023 SAFARI RALLY RECONNAISSANCE SCHEDULE - Version 1.0										
Monday 19th June										
Opens		Closes	Stage	Kms						
Priority 1 & 2	All Drivers				Estimated Recce Time	Time after SS	Distance to next SS	Time for Road Section	Time at next SS	Total
07:00	09:30		SS 2/5 Loldia	19.17	35m	07:35	0.56	5m	07:40	
	2h 30m	12:00	SS 2/5 Loldia	19.17	35m	08:15	2.87	10m	08:25	
08:25	10:55		Shakedown - Loldia	5.40	10m	08:35	0.54	5m	08:40	
	2h 30m	13:25	Shakedown - Loldia	5.40	10m	08:50	40.90	1h	09:50	
09:50	12:20		SS 8/11 Soysambu	29.32	45m	10:35	4.30	10m	10:45	
10:45	13:15		SS 9/12 Elementiata	15.08	13m 48.150s	10:58	11.70	20m	11:18	
		15:45	SS 9/11 Soysambu	29.32	45m	12:03	4.30	10m	12:13	
12:13	14:43	15:45	SS 9/12 Elementiata	15.08	25m	12:38	9.60	15m	12:53	
12:53	15:23		SS 10/13 Sleeping Warrior	31.04	45m	13:38	7.50	10m	13:48	
		17:53	SS 10/13 Sleeping Warrior	31.04	45m	14:33	-			
Sunrise - Loldia		06:33		200.02			82.27			282.29
Sunset - Hellsgate		18:38								
Tuesday 20th June										
Opens		Closes	Stage	SS	Estimated Recce Time	Time after SS	Distance to next SS	Time for Road Section	Time at next SS	Total
07:00	09:30		SS14/17 Malewa	11.00	20m	07:20	2.15	10m	07:30	
		12:00	SS14/17 Malewa	11.00	20m	07:50	24.20	45m	08:35	
08:35	08:35		SS 14/17 Oserian	18.33	35m	09:10	0.56	5m	09:15	
	2h 30m	11:05	SS 14/17 Oserian	18.33	35m	09:50	2.87	10m	10:00	
10:00	12:30		SS 3/6 Geothermal	13.80	25m	10:25	4.30	10m	10:35	
		15:00	SS 3/6 Geothermal	13.80	25m	11:00	11.70	20m	11:20	
11:20	13:50		SS 16/19 Hells Gate	10.53	20m	11:40	9.60	15m	11:55	
		16:20	SS 16/19 Hells Gate	10.53	20m	12:15	11.00	15m	12:30	
12:30	15:00		SS 4/7 Kedong	30.65	45m	13:15	0.72	5m	13:20	
		17:30	SS 4/7 Kedong	30.65	45m	14:05				
Sunrise - Malewa		06:34		168.62			67.10			235.72
Sunset - Kedong		18:37								
Thursday 22nd June										
Opens		Closes	Stage	SS	Estimated Recce Time	Time after SS	Distance to next SS	Time for Road Section	Time at next SS	Total
Schedule to be published in a Bulletin			SSS1 Kasarani	4.84			0.19			
			SSS1 Kasarani	4.84						
Sunrise - Kasarani		06:32		9.68			0.19			9.87